

ST. PETERSBURG HARBOR PINELLAS COUNTY, FLORIDA HYDROGRAPHIC EXAM SURVEY FY14 12 TO 24-FOOT PROJECT

- SURVEY NOTES**
- REFER TO SURVEY NO. 14-120.
 - SOUNDINGS ARE IN FEET AND TENTHS AND REFER TO NOAA'S REPORTED MEAN LOWER LOW WATER (MLLW) OF THE 1983-2001 TIDAL EPOCH.
 - TIDAL REDUCTIONS WERE OBTAINED UTILIZING A REAL-TIME KINEMATIC (RTK) GPS AND REFERENCED TO MLLW UTILIZING A HYPACK KINEMATIC TIDE DATUM (KTD) MODEL. KTD FILE NAME IS: "SPC-FL-WEST-2010-12-07.KTD".
 - ALL ELEVATIONS ARE BELOW THE CHART DATUM UNLESS PRECEDED BY A (+) SIGN.
 - PLANE COORDINATES ARE BASED ON THE TRANSVERSE MERCATOR PROJECTION FOR THE WEST ZONE OF FLORIDA AND REFERENCED TO NORTH AMERICAN DATUM OF 1983, REALIZATION OF 2007 (NAD83(2007)).
 - ALL AZIMUTHS ARE GRID; RECKONED CLOCKWISE FROM SOUTH.
 - ALL STATIONING REFERS TO THE CENTERLINE OF THE CHANNEL.
 - THIS SURVEY WAS PERFORMED USING REAL-TIME KINEMATIC (RTK) GPS POSITIONING WITH THE FOLLOWING REFERENCE BASE LOCATIONS:
REFERENCE BASE LOCATED AT "DILLMAN" (COE PID: ACI970)
TIDE MEASURE DOWN POINT LOCATED AT "EDD-60" (PID: AGS298)
 - DEPTHS DEPICTED BY THIS SURVEY ARE REFERENCED TO MLLW, TIDAL EPOCH 1983-2001 AS REPORTED BY THE NATIONAL OCEANIC AND ATMOSPHERIC ADMINISTRATION (NOAA). NOAA'S VDATUM MODEL WAS USED AND CALIBRATED TO THE PUBLISHED MLLW HEIGHTS OF THE BENCHMARKS ASSOCIATED WITH THE TIDE GAGE SITE SPECIFIED BELOW:
NOAA TIDAL STATION 872-6520, ST. PETERSBURG, TAMPA BAY FOR ALL CUTS
 - VERTICAL MEASUREMENTS WERE MADE USING A ROSS MODEL 835C SMART-SOUNDER WITH A DUAL-FREQUENCY 28/200 KHZ SINGLE-BEAM TRANSDUCER. ALL SOUNDINGS SHOWN ARE IN HIGH FREQUENCY EXCEPT BAYBORO BASIN, WHICH IS SHOWN IN LOW FREQUENCY.
 - AIDS TO NAVIGATION WERE LOCATED DURING THIS SURVEY.
 - THE INFORMATION DEPICTED ON THIS MAP REPRESENTS THE RESULTS OF SURVEYS MADE ON THE DATES INDICATED ABOVE AND CAN ONLY BE CONSIDERED AS INDICATING THE GENERAL CONDITIONS AT THAT TIME. THIS CHART IS SOLELY FOR THE DISTRIBUTION OF AVAILABLE DEPTHS AT THE TIME OF THE SURVEY.
 - SURVEY ACCURACY PERFORMANCE STANDARDS, QUALITY CONTROL, AND QUALITY ASSURANCE REQUIREMENTS WERE FOLLOWED DURING THIS SURVEY IN ACCORDANCE WITH USACE EM 1110-2-1003, HYDROGRAPHIC SURVEYING, 30 NOV 13.

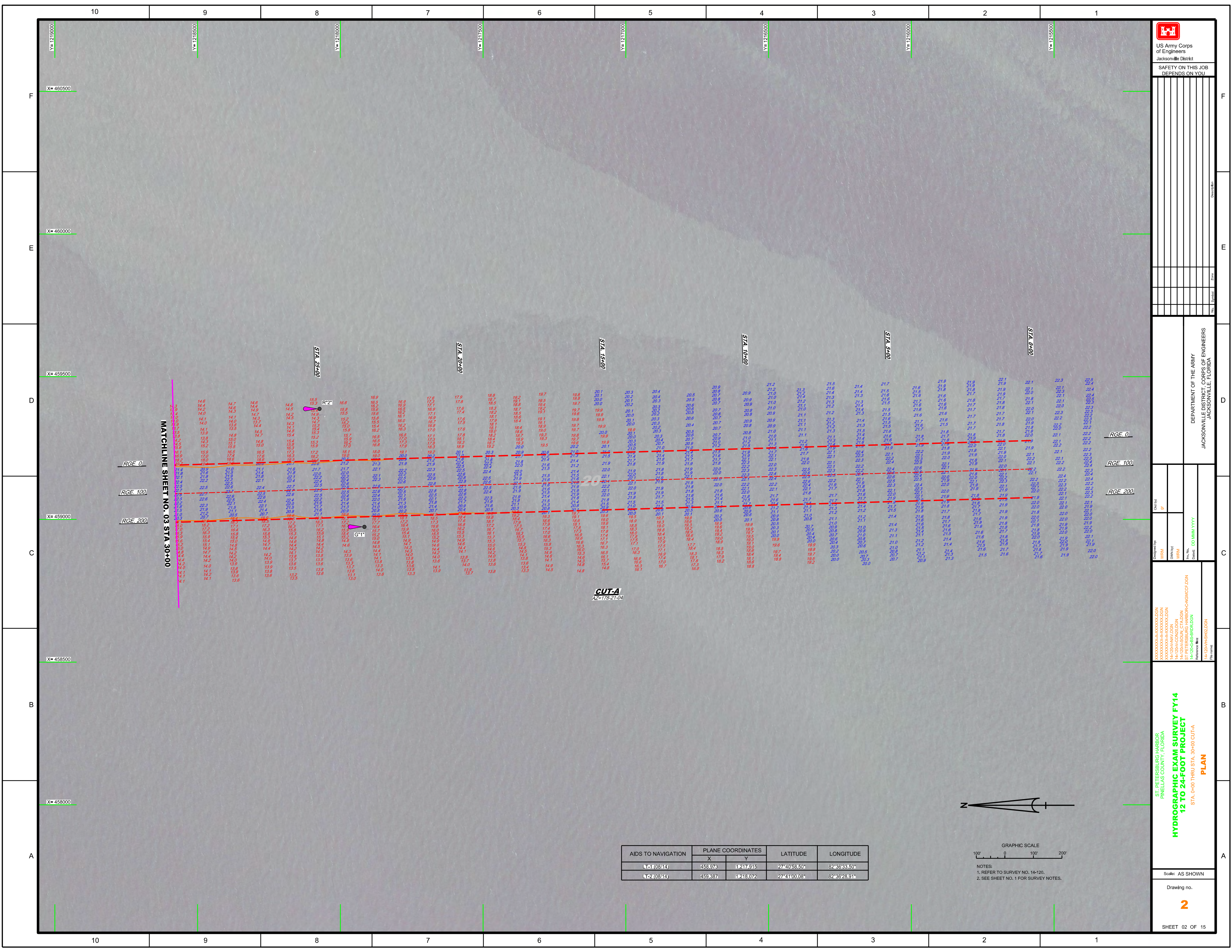
LEGEND	
	MONUMENT
	LIGHTED BEACON
	GREEN DAYBEACON
	RED DAYBEACON
	RED LIGHTED BUOY
	GREEN LIGHTED BUOY
	CAN BUOY
	NUN BUOY
	TIDE STAFF
	PROJECT DEPTH

US Army Corps of Engineers
Jacksonville District
SAFETY ON THIS JOB
DEPENDS ON YOU

DEPARTMENT OF THE ARMY
JACKSONVILLE DISTRICT, CORPS OF ENGINEERS
JACKSONVILLE, FLORIDA

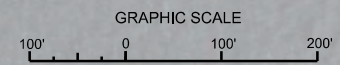
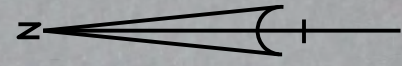
ST. PETERSBURG HARBOR
PINELLAS COUNTY, FLORIDA
**HYDROGRAPHIC EXAM SURVEY FY14
12 TO 24-FOOT PROJECT**
INDEX, LOCATION AND VICINITY
MAP

Scale: AS SHOWN
Drawing no. **1**
SHEET 01 OF 15

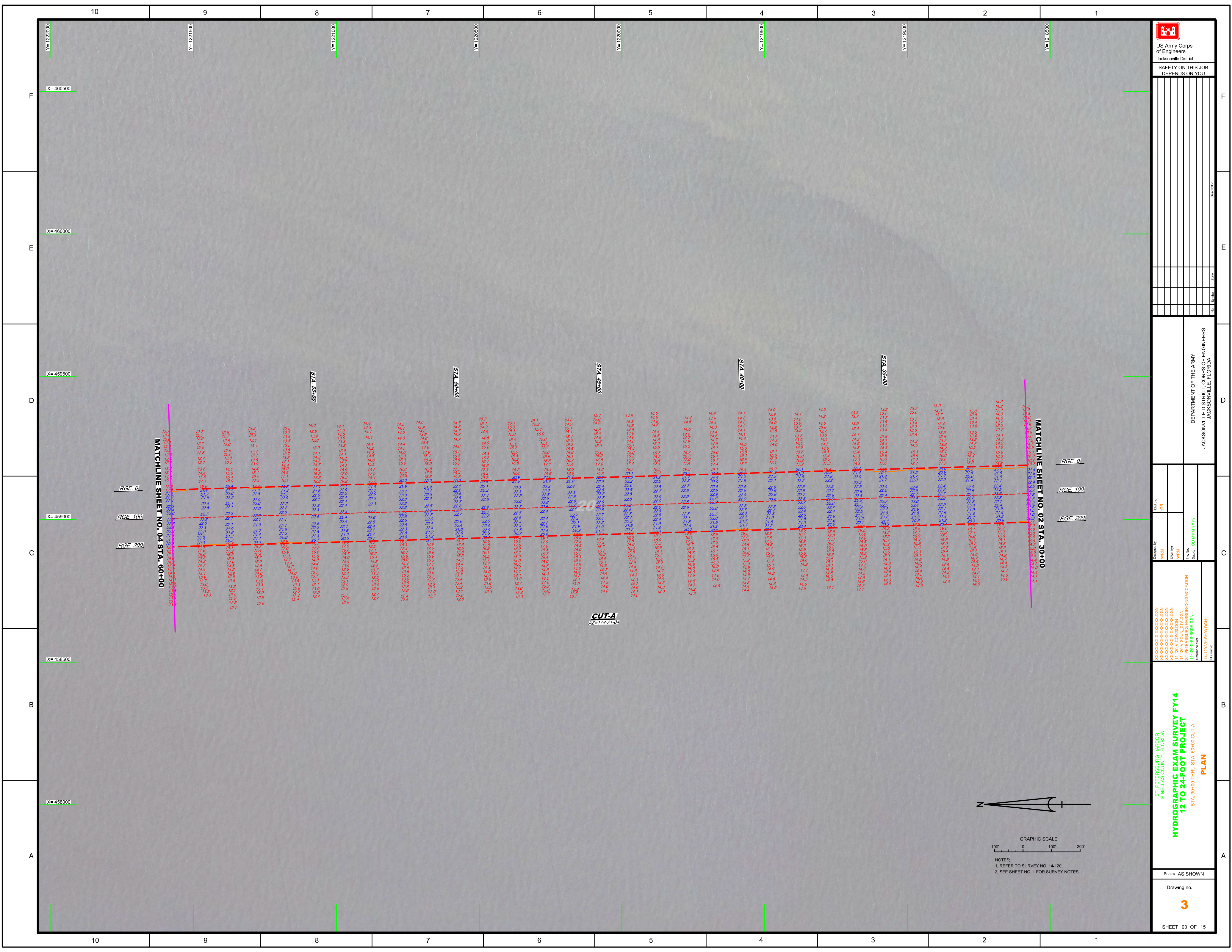


MATCHLINE SHEET NO. 03 STA 30+00

CUT-A
AZ=178-21-04



NOTES:
1. REFER TO SURVEY NO. 14-120.
2. SEE SHEET NO. 1 FOR SURVEY NOTES.



US Army Corps of Engineers

 Jacksonville District

 SAFETY ON THIS JOB

 DEPENDS ON YOU

DEPARTMENT OF THE ARMY

 JACKSONVILLE DISTRICT, CORPS OF ENGINEERS

 JACKSONVILLE, FLORIDA

Designed by: **WYM**

 Drawn by: **WYM**

 Checked: **DD/AMM/YYY**

 Reference files:

 H:\1204\HYDRO\1204.DGN

HYDROGRAPHIC EXAM SURVEY FY14

12 TO 24-FOOT PROJECT

 STA. 30+00 THRU STA. 60+00 CUT-A

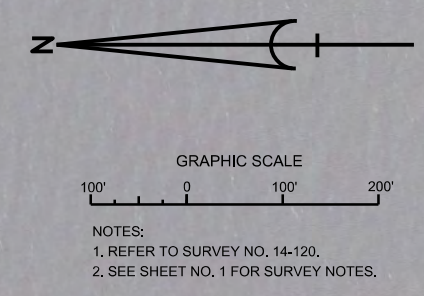
PLAN

 Scale: AS SHOWN

 Drawing no.

3

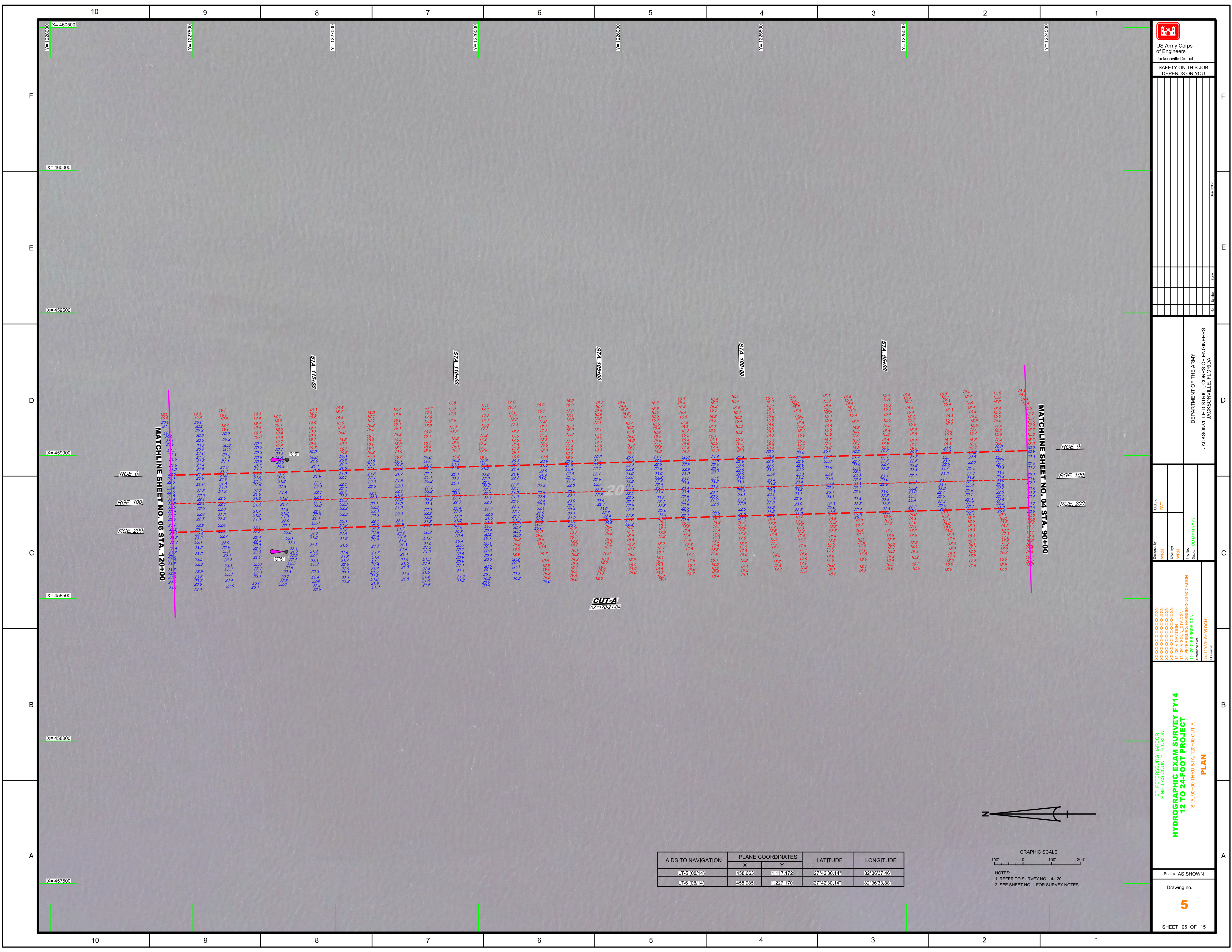
 SHEET 03 OF 15



NOTES:

 1. REFER TO SURVEY NO. 14-120.

 2. SEE SHEET NO. 1 FOR SURVEY NOTES.



US Army Corps of Engineers
 Jacksonville District
 SAFETY ON THIS JOB
 DEPENDS ON YOU

DEPARTMENT OF THE ARMY
 JACKSONVILLE DISTRICT, CORPS OF ENGINEERS
 JACKSONVILLE, FLORIDA

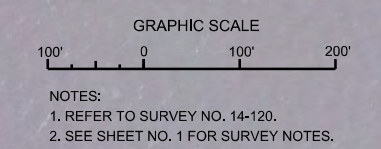
ST. PETERSBURG HARBOR
 PINELAS COUNTY, FLORIDA
**HYDROGRAPHIC EXAM SURVEY FY14
 12 TO 24-FOOT PROJECT**
 STA. 90+00 THRU STA. 120+00 CUT-A
PLAN

Scale: AS SHOWN
 Drawing no. **5**
 SHEET 05 OF 15

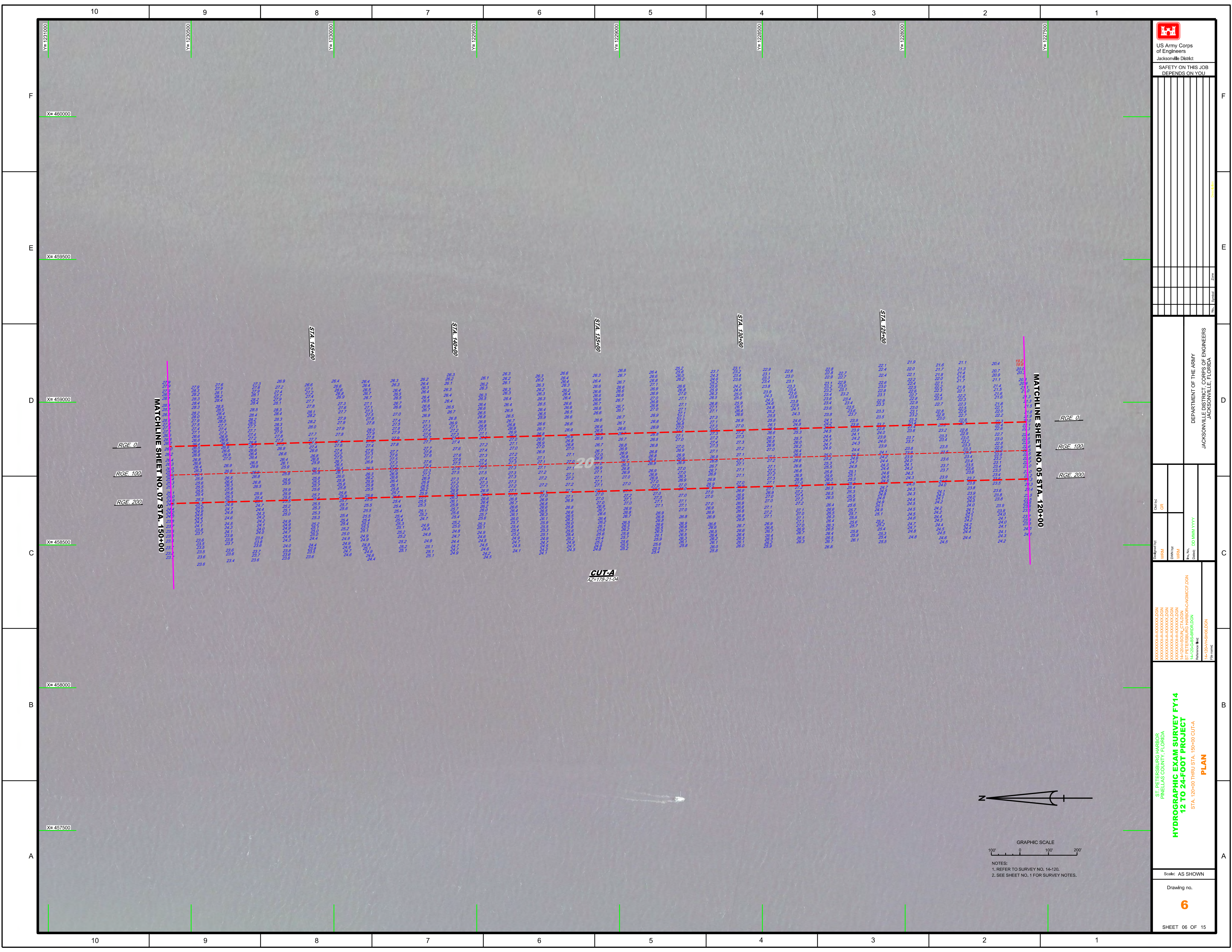
MATCHLINE SHEET NO. 04 STA. 90+00

MATCHLINE SHEET NO. 06 STA. 120+00

AIDS TO NAVIGATION	PLANE COORDINATES		LATITUDE	LONGITUDE
	X	Y		
LT-5 (0814)	458,663	11227,172	27°42'30.14"	82°36'37.46"
LT-6 (0814)	458,985	11227,170	27°42'30.14"	82°36'33.88"



CUT-A
 AZ=178-21-04



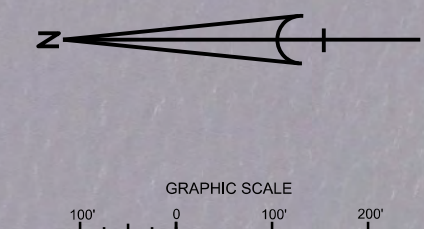
US Army Corps of Engineers
Jacksonville District

SAFETY ON THIS JOB
DEPENDS ON YOU

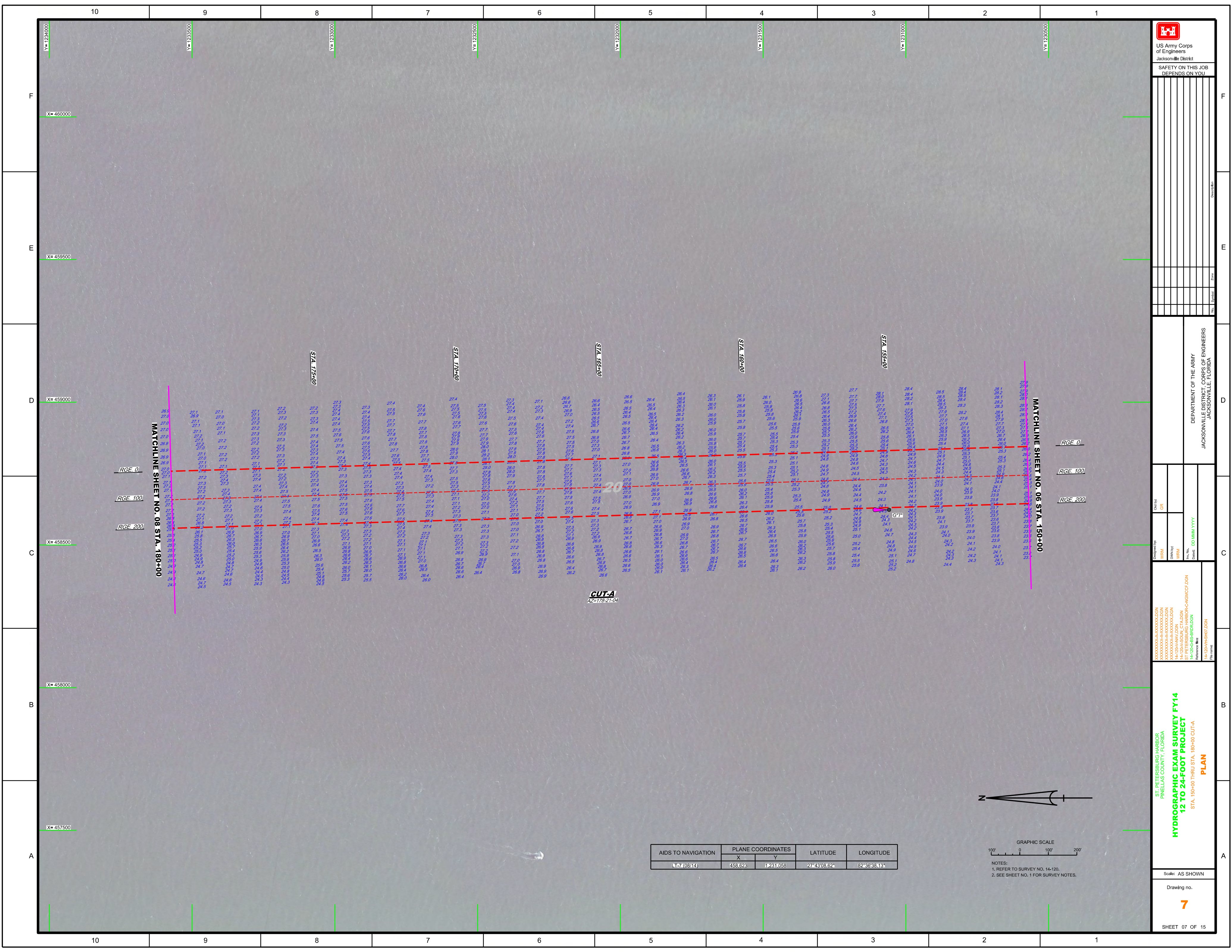
DEPARTMENT OF THE ARMY
JACKSONVILLE DISTRICT, CORPS OF ENGINEERS
JACKSONVILLE, FLORIDA

Designed by: [blank]
Checked by: [blank]
Drawn by: [blank]
Reviewed by: [blank]
Scale: AS SHOWN
Drawing no. 6

ST. PETERSBURG HARBOR
PINELAS COUNTY, FLORIDA
**HYDROGRAPHIC EXAM SURVEY FY14
12 TO 24-FOOT PROJECT**
STA. 120+00 THRU STA. 150+00 CUT-A
PLAN



NOTES:
1. REFER TO SURVEY NO. 14-120.
2. SEE SHEET NO. 1 FOR SURVEY NOTES.



US Army Corps of Engineers

 Jacksonville District

 SAFETY ON THIS JOB

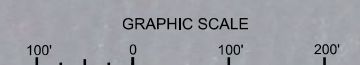
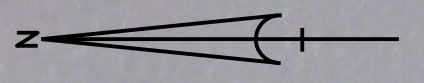
 DEPENDS ON YOU

DEPARTMENT OF THE ARMY JACKSONVILLE DISTRICT, CORPS OF ENGINEERS JACKSONVILLE, FLORIDA	Drawn by: GRL Checked: DD/MM/YYYY
--	--------------------------------------

ST. PETERSBURG HARBOR
 PINELAS COUNTY, FLORIDA
HYDROGRAPHIC EXAM SURVEY FY14
12 TO 24-FOOT PROJECT
 STA. 150+00 THRU STA. 180+00 CUT-A
PLAN

Scale: AS SHOWN
 Drawing no. **7**
 SHEET 07 OF 15

AIDS TO NAVIGATION	PLANE COORDINATES		LATITUDE	LONGITUDE
	X	Y		
17 (08/14)	458.623	1,231,058	27°43'08.62"	82°36'38.13"

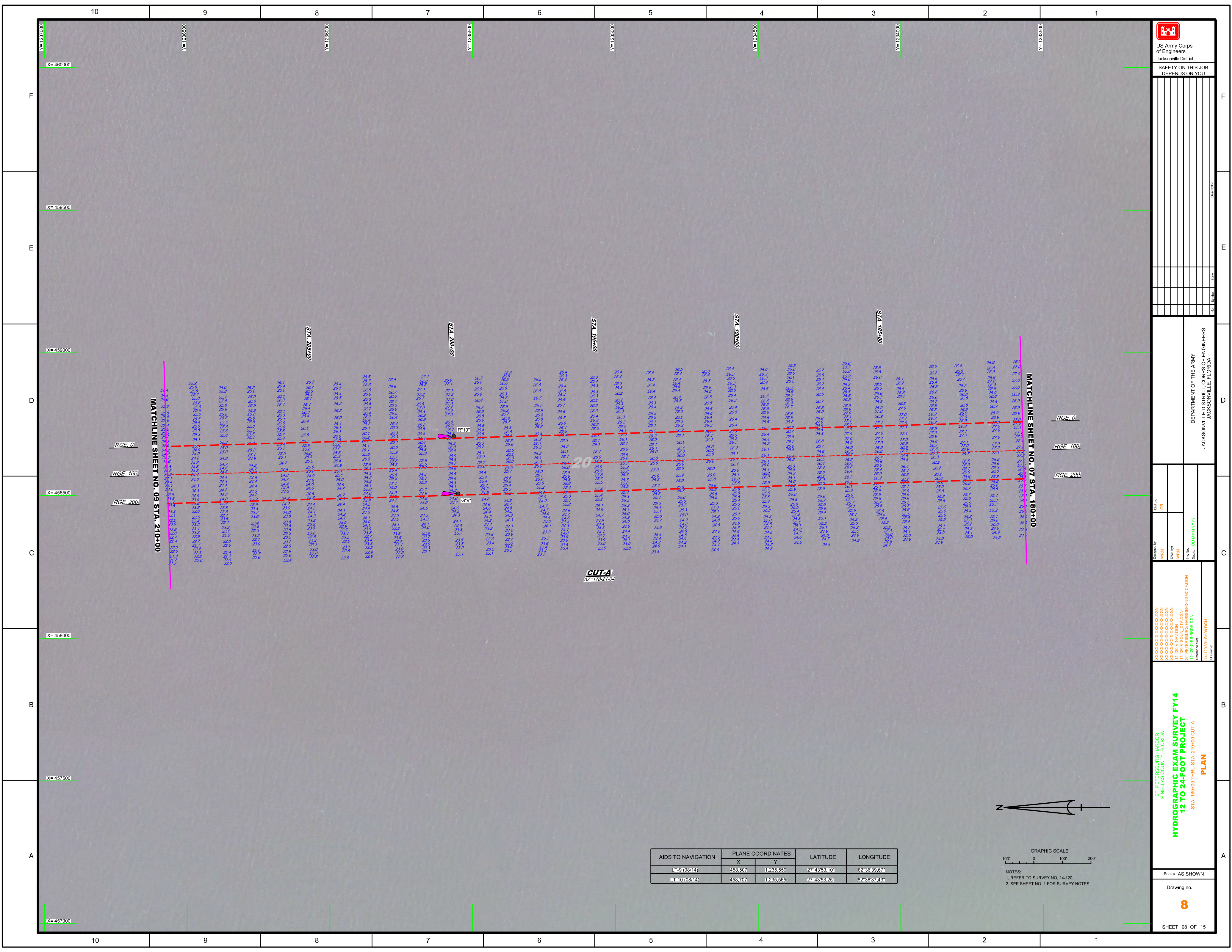


NOTES:
 1. REFER TO SURVEY NO. 14-120.
 2. SEE SHEET NO. 1 FOR SURVEY NOTES.

MATCHLINE SHEET NO. 08 STA. 180+00

MATCHLINE SHEET NO. 06 STA. 150+00

CUT-A
 AZ=178-21-04

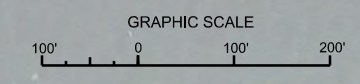


MATCHLINE SHEET NO. 09 STA. 210+00

MATCHLINE SHEET NO. 07 STA. 180+00

CUT-A
AZ=178-21-04

AIDS TO NAVIGATION	PLANE COORDINATES		LATITUDE	LONGITUDE
	X	Y		
1-9 (08/14)	458,507	1235,550	27°43'53.10"	82°36'39.67"
1-10 (08/14)	458,707	1235,585	27°43'53.25"	82°36'37.43"



NOTES:
1. REFER TO SURVEY NO. 14-120.
2. SEE SHEET NO. 1 FOR SURVEY NOTES.

US Army Corps of Engineers
Jacksonville District

**SAFETY ON THIS JOB
DEPENDS ON YOU**

DEPARTMENT OF THE ARMY
JACKSONVILLE DISTRICT, CORPS OF ENGINEERS
JACKSONVILLE, FLORIDA

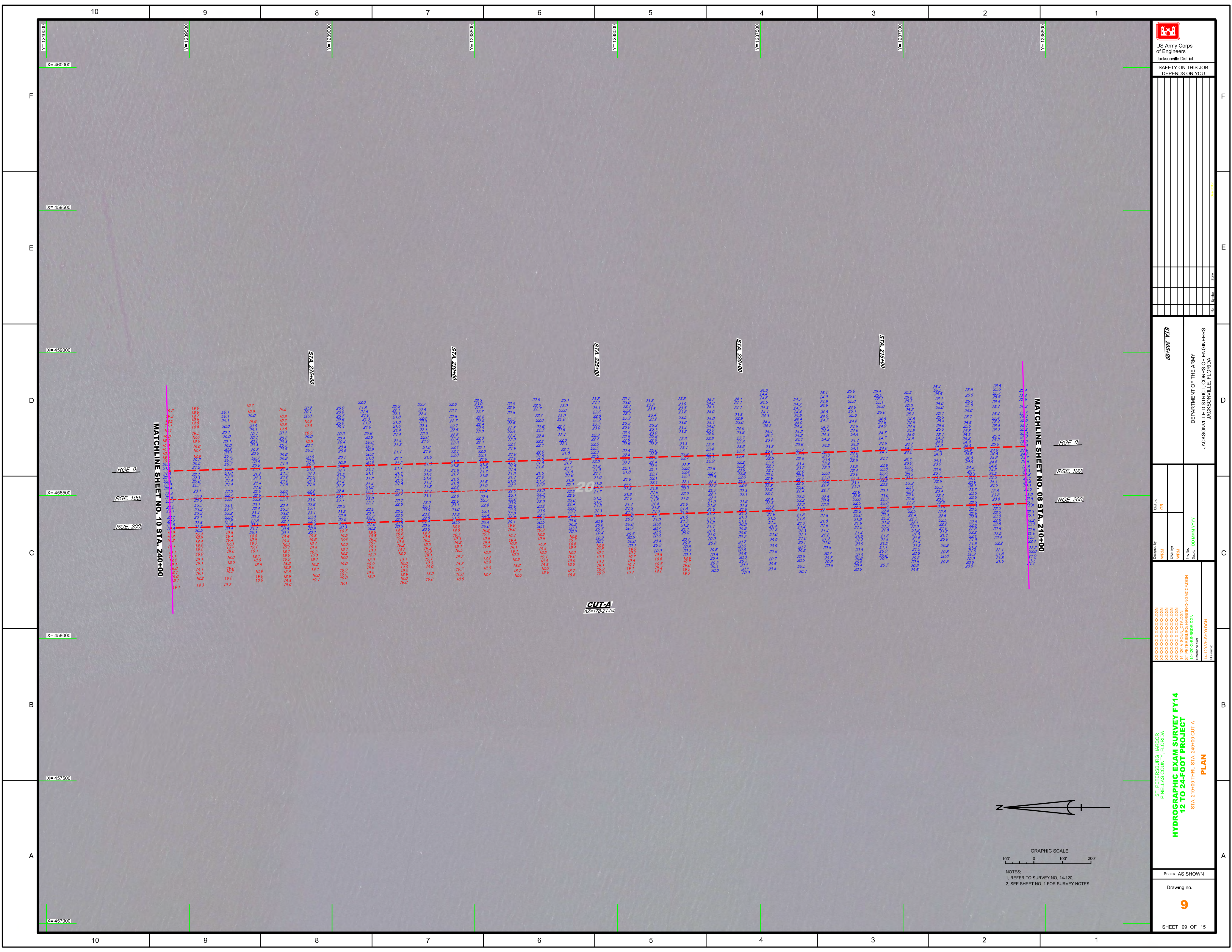
Designed by: WRM	Checked by: GRL
Drawn by: WRM	Reviewed by: WRM
Scale: AS SHOWN	Plot Date: DDMMYYYY


**HYDROGRAPHIC EXAM SURVEY FY14
12 TO 24-FOOT PROJECT**

STA. 180+00 THRU STA. 210+00 CUT-A

PLAN

SHEET 08 OF 15




 US Army Corps of Engineers
 Jacksonville District
 SAFETY ON THIS JOB
 DEPENDS ON YOU

STA 205+00
 DEPARTMENT OF THE ARMY
 JACKSONVILLE DISTRICT, CORPS OF ENGINEERS
 JACKSONVILLE, FLORIDA

STA 205+00
 STA 210+00
 STA 215+00
 STA 220+00
 STA 225+00
 STA 230+00
 STA 235+00
 STA 240+00
 STA 245+00
 STA 250+00

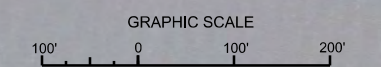
MATCHLINE SHEET NO. 08 STA. 210+00
 MATCHLINE SHEET NO. 10 STA. 240+00

RGE 0
 RGE 100
 RGE 200

CUT-A
 AZ=178-21-04

ST. PETERSBURG HARBOR
 PINELAS COUNTY, FLORIDA
HYDROGRAPHIC EXAM SURVEY FY14
12 TO 24-FOOT PROJECT
 STA. 210+00 THRU STA. 240+00 CUT-A
PLAN

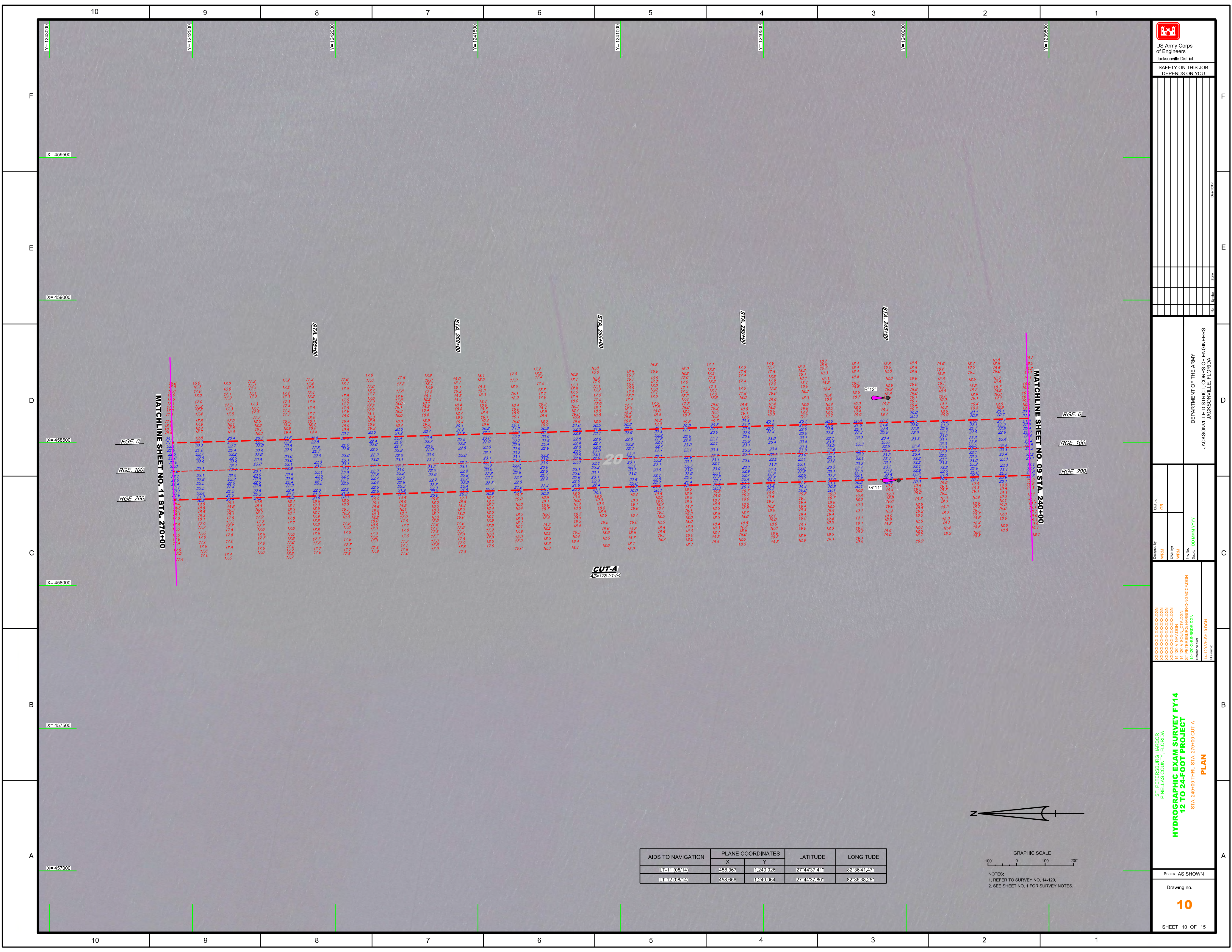
SHEET 09 OF 15



NOTES:
 1. REFER TO SURVEY NO. 14-120.
 2. SEE SHEET NO. 1 FOR SURVEY NOTES.

Scale: AS SHOWN
 Drawing no.

9



US Army Corps of Engineers

 Jacksonville District

 SAFETY ON THIS JOB

 DEPENDS ON YOU

DEPARTMENT OF THE ARMY

 JACKSONVILLE DISTRICT CORPS OF ENGINEERS

 JACKSONVILLE, FLORIDA

ST. PETERSBURG HARBOR

 PINELAS COUNTY, FLORIDA

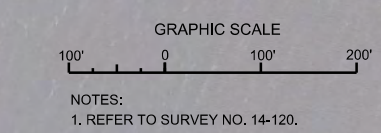
HYDROGRAPHIC EXAM SURVEY FY14

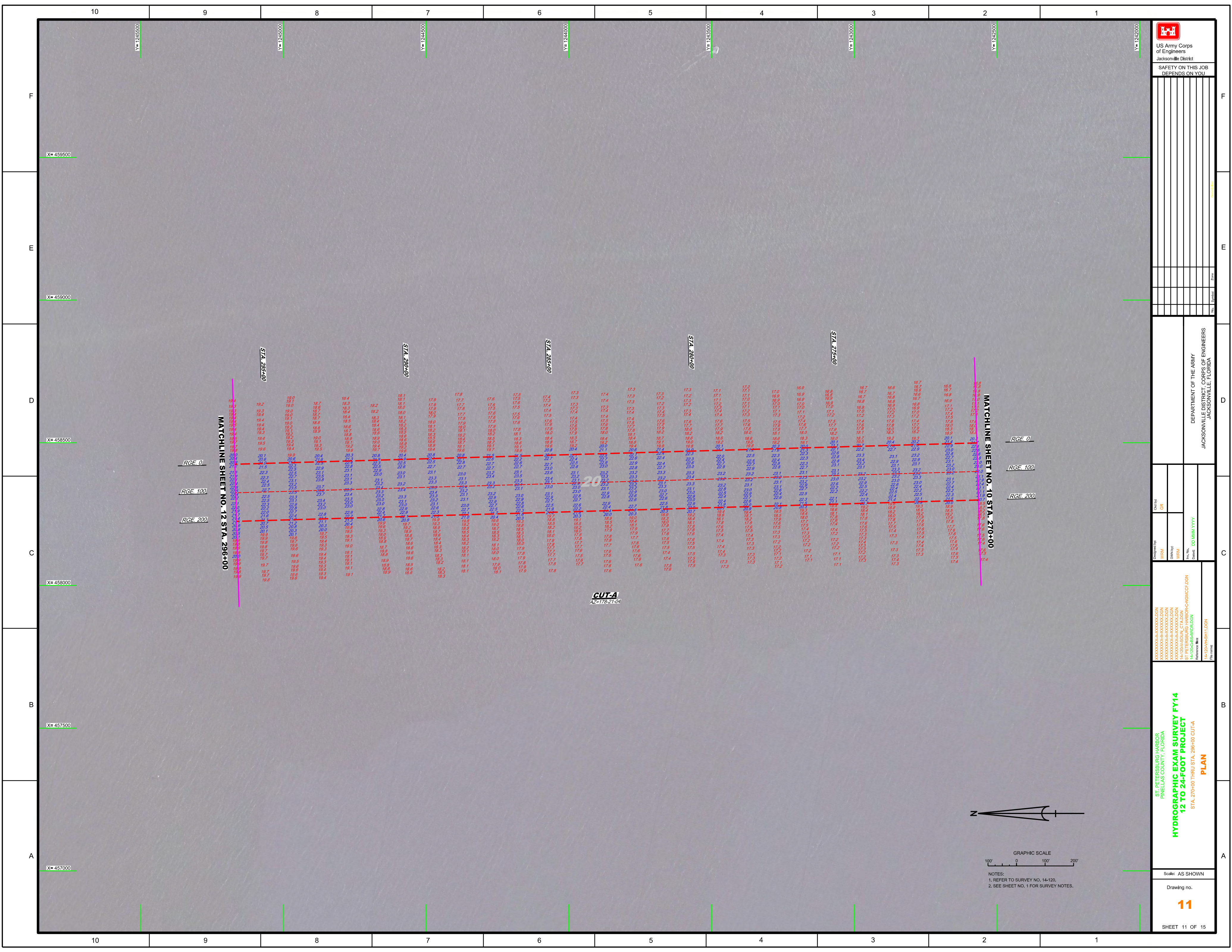
12 TO 24-FOOT PROJECT

 STA. 240+00 THRU STA. 270+00 CUT-A

PLAN

AIDS TO NAVIGATION	PLANE COORDINATES		LATITUDE	LONGITUDE
	X	Y		
L11 (08/14)	458,367	1240,026	27°44'37.41"	82°36'41.47"
L12 (08/14)	458,656	1240,064	27°44'37.80"	82°36'38.25"



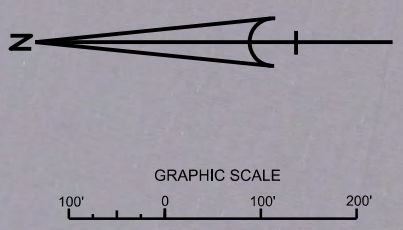


US Army Corps of Engineers
 Jacksonville District
 SAFETY ON THIS JOB
 DEPENDS ON YOU

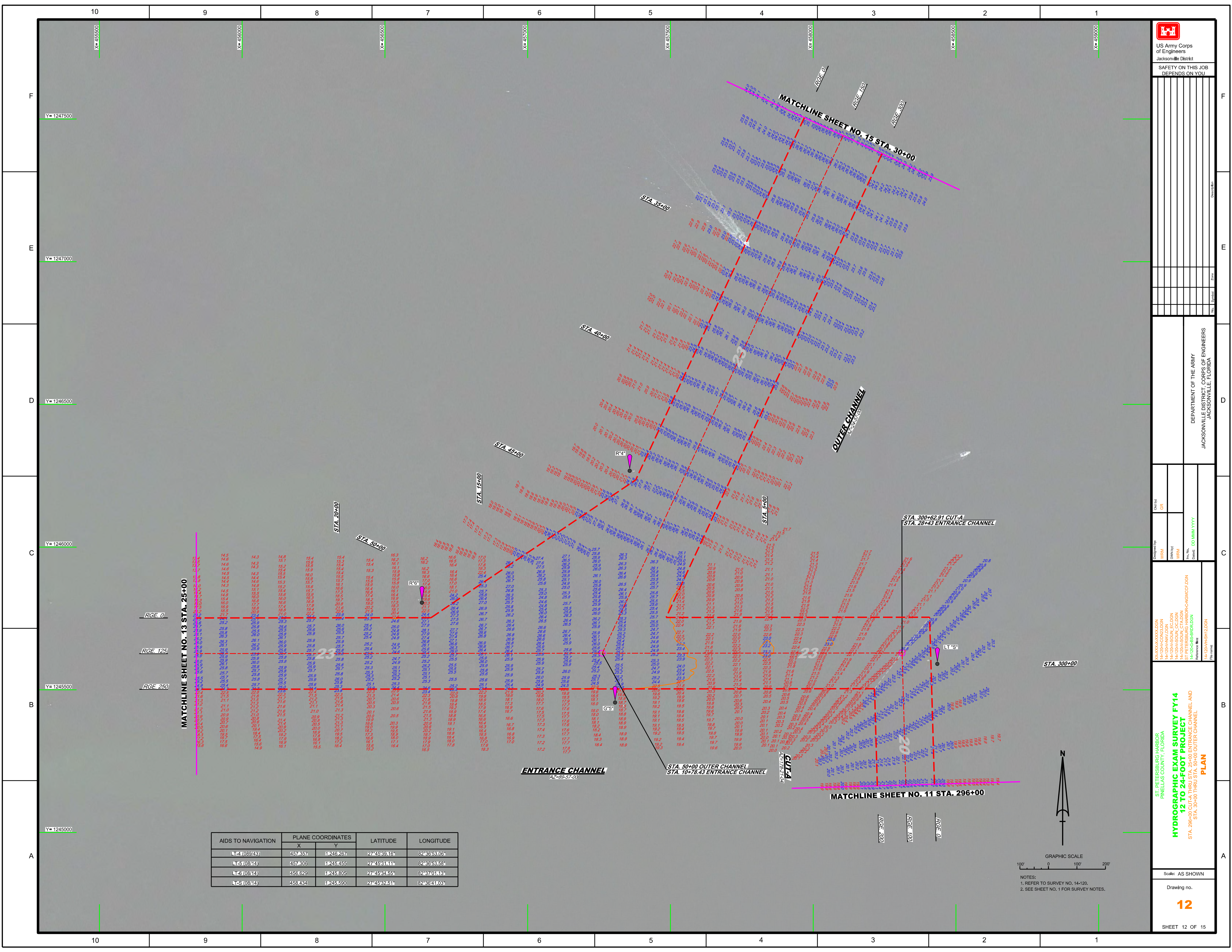
DEPARTMENT OF THE ARMY
 JACKSONVILLE DISTRICT, CORPS OF ENGINEERS
 JACKSONVILLE, FLORIDA

ST. PETERSBURG HARBOR
 PINELAS COUNTY, FLORIDA
HYDROGRAPHIC EXAM SURVEY FY14
12 TO 24-FOOT PROJECT
 STA. 270+00 THRU STA. 296+00 CUT-A
PLAN

Scale: AS SHOWN
 Drawing no. **11**
 SHEET 11 OF 15



NOTES:
 1. REFER TO SURVEY NO. 14-120.
 2. SEE SHEET NO. 1 FOR SURVEY NOTES.

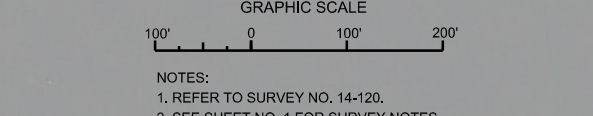


US Army Corps of Engineers
 Jacksonville District
SAFETY ON THIS JOB DEPENDS ON YOU

REV.	DATE	BY	CHKD BY	DESCRIPTION

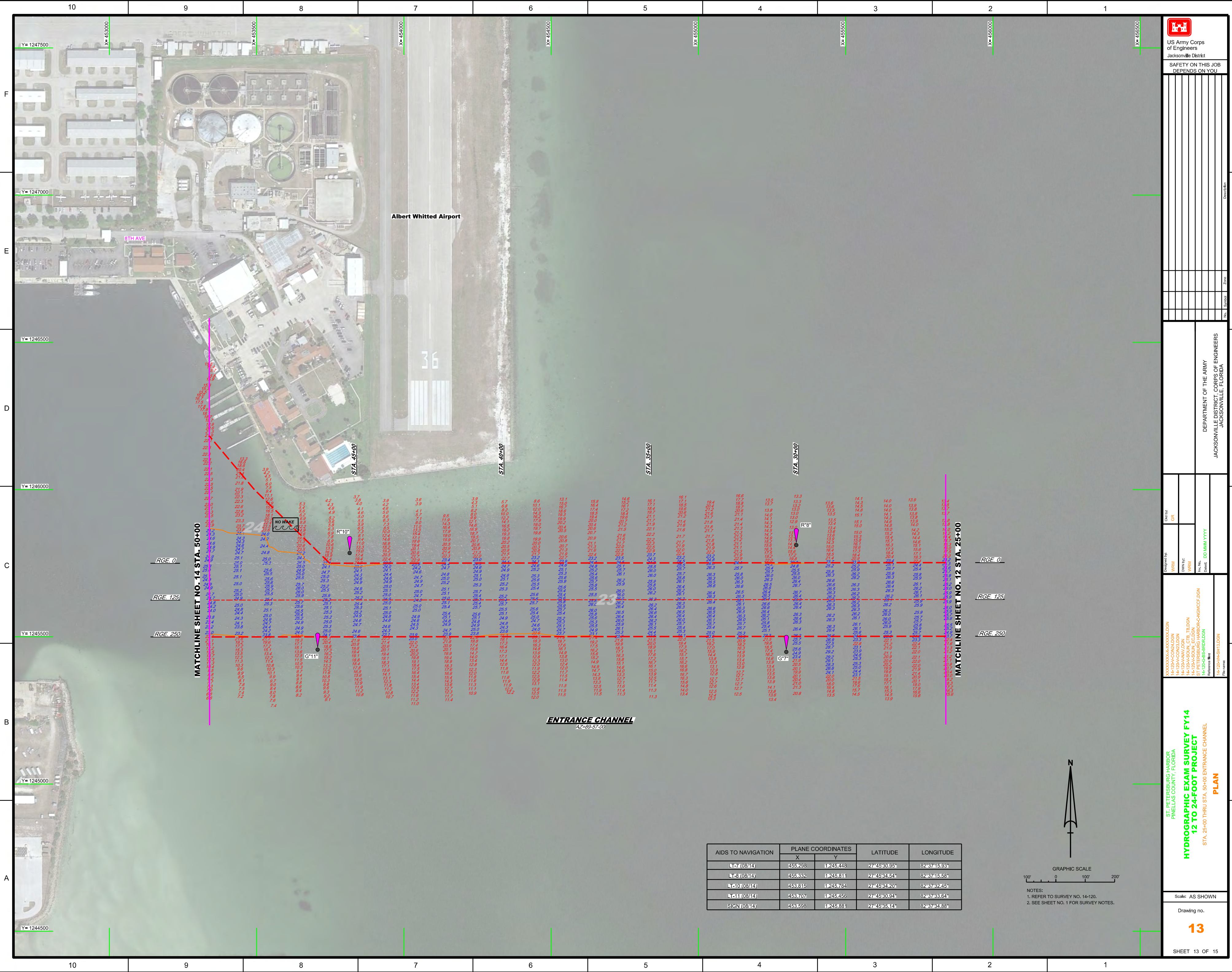
DESIGNED BY: **WRM**
 DRAWN BY: **WRM**
 CHECKED BY: **DO**
 DATE: **MM/YY**

AIDS TO NAVIGATION	PLANE COORDINATES		LATITUDE	LONGITUDE
	X	Y		
◻ 51 (08/14)	457,837	1245,267	27°45'39.16" N	82°36'53.06" W
◻ 51 (08/14)	457,806	1245,455	27°45'31.14" N	82°36'53.69" W
◻ 51 (08/14)	458,629	1245,805	27°45'32.55" N	82°36'50.13" W
◻ 51 (08/14)	458,434	1245,590	27°45'32.51" N	82°36'51.03" W

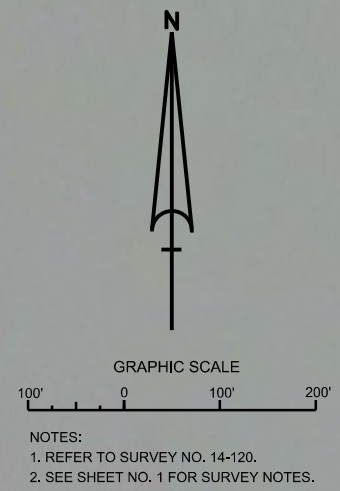


ST. PETERSBURG HARBOR
 PINELAS COUNTY, FLORIDA
HYDROGRAPHIC EXAM SURVEY FY14
12 TO 24-FOOT PROJECT
 STA. 289+00 CUT-A THRU STA. 25+00 ENTRANCE CHANNEL AND
 STA. 30+00 THRU STA. 50+00 OUTER CHANNEL

Scale: AS SHOWN
 Drawing no.
12
 SHEET 12 OF 15



AIDS TO NAVIGATION	PLANE COORDINATES		LATITUDE	LONGITUDE
	X	Y		
17 (08/14)	455288	1245448	27 49 30.95N	82 37 15.93W
18 (08/14)	455332	1245311	27 49 34.54N	82 37 15.56W
110 (08/14)	453815	1245781	27 49 34.20N	82 37 32.45W
111 (08/14)	453707	1245556	27 49 30.54N	82 37 33.64W
SIGN (08/14)	453598	1245831	27 49 33.14N	82 37 34.88W



NOTES:
 1. REFER TO SURVEY NO. 14-120.
 2. SEE SHEET NO. 1 FOR SURVEY NOTES.

ENTRANCE CHANNEL
 AZ=89-57-00

MATCHLINE SHEET NO. 14 STA. 50+00

MATCHLINE SHEET NO. 12 STA. 25+00

RGE. 0

RGE. 125

RGE. 250

NO WAKE

R*10

R*8

G*11

G*7

36

37

38

39

40

41

42

43

44

45

46

47

48

49

50

51

52

53

54

55

56

57

58

59

60

61

62

63

64

65

66

67

68

69

70

71

72

73

74

75

76

77

78

79

80

81

82

83

84

85

86

87

88

89

90

91

92

93

94

95

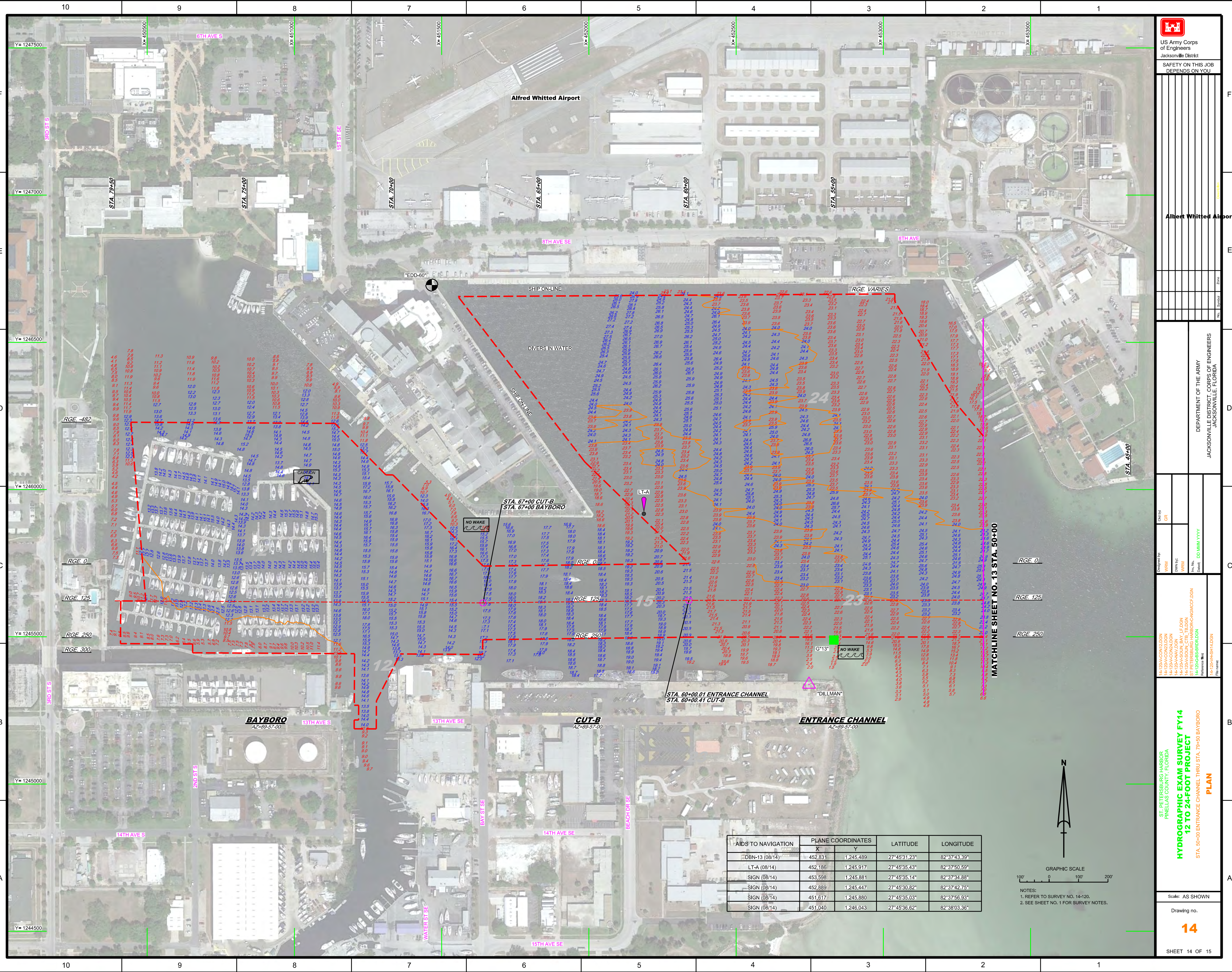
96

97

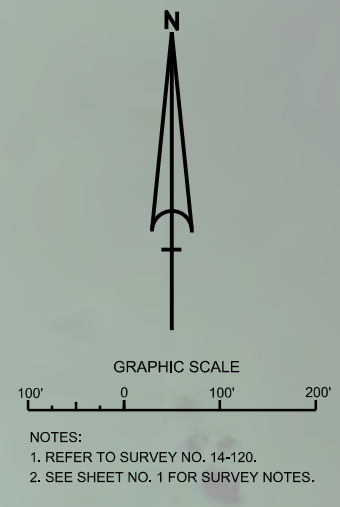
98

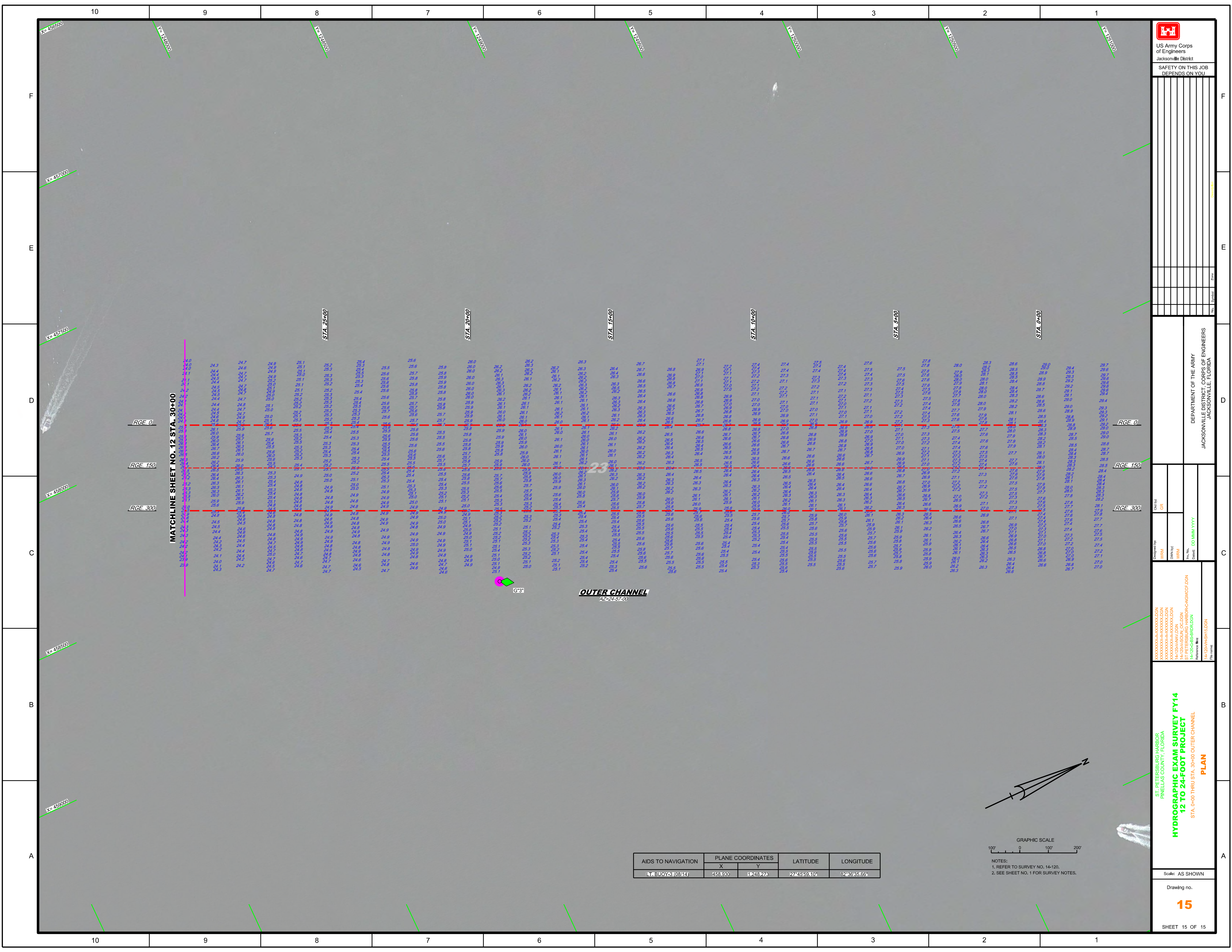
99

100



AIDS TO NAVIGATION	PLANE COORDINATES		LATITUDE	LONGITUDE
	X	Y		
DBN-13 (08/14)	452,831	1,245,489	27°45'31.23"	82°37'43.39"
LT-A (08/14)	452,186	1,245,917	27°45'35.43"	82°37'50.59"
SIGN (08/14)	453,598	1,245,881	27°45'35.14"	82°37'34.88"
SIGN (08/14)	452,889	1,245,447	27°45'30.82"	82°37'42.75"
SIGN (08/14)	451,617	1,245,880	27°45'35.03"	82°37'56.93"
SIGN (08/14)	451,040	1,246,043	27°45'36.62"	82°38'03.36"

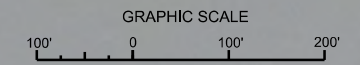




MATCHLINE SHEET NO. 12 STA. 30+00

OUTER CHANNEL
AZ=24-57-00

AIDS TO NAVIGATION	PLANE COORDINATES		LATITUDE	LONGITUDE
	X	Y		
LTA BUOY 3 (0314)	458,950	1,248,276	27°45'59.10"	82°36'35.66"



NOTES:
1. REFER TO SURVEY NO. 14-120.
2. SEE SHEET NO. 1 FOR SURVEY NOTES.