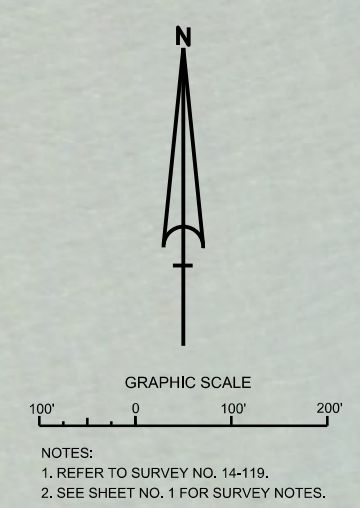
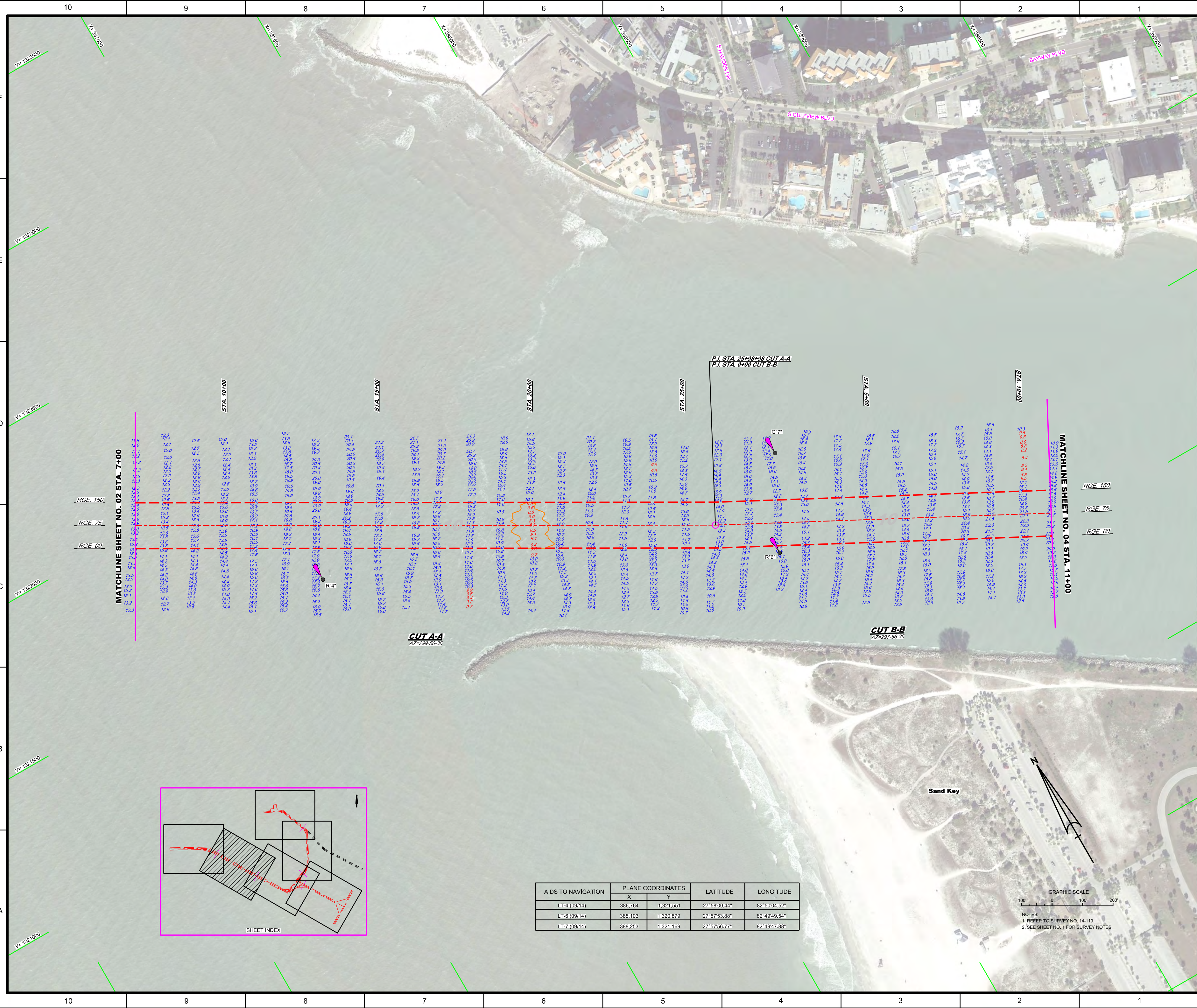


AIDS TO NAVIGATION	PLANE COORDINATES		LATITUDE	LONGITUDE
	X	Y		
LT-2 (09/14)	385.557	1,322,180	27°58'06.59"	82°50'18.02"
DBN-3 (09/14)	385.541	1,322,470	27°58'09.46"	82°50'18.23"





MATCHLINE SHEET NO. 02 STA. 7+00

MATCHLINE SHEET NO. 04 STA. 11+00

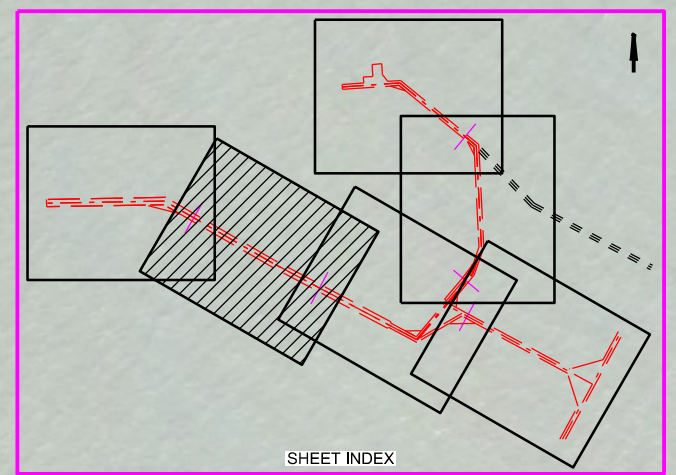
RGE 150
RGE 75
RGE 00

RGE 150
RGE 75
RGE 00

CUT A-A
AZ=299-56-36

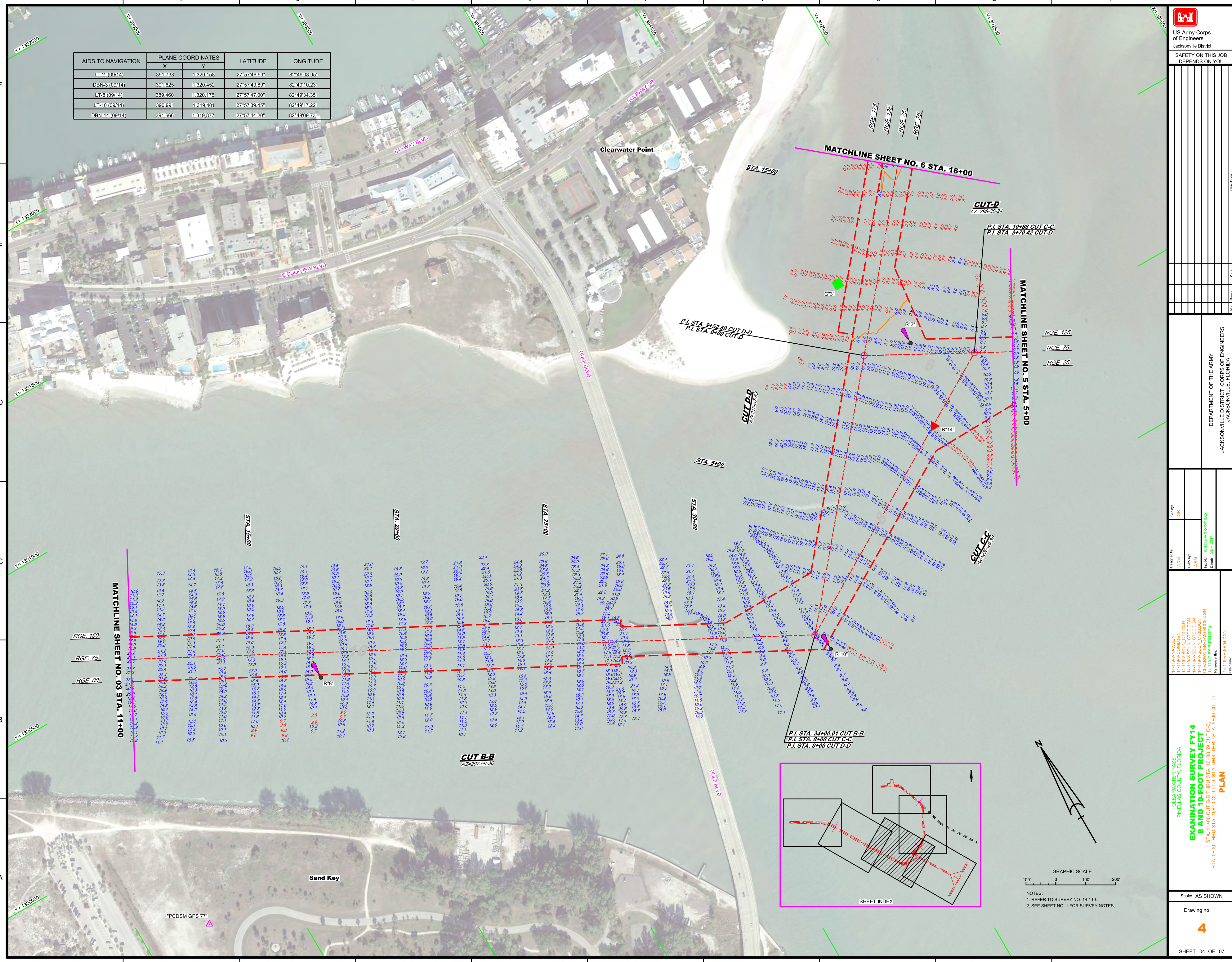
CUT B-B
AZ=297-56-36

AIDS TO NAVIGATION	PLANE COORDINATES		LATITUDE	LONGITUDE
	X	Y		
LT-4 (09/14)	388,764	1,321,551	27°58'00.44"	82°50'04.52"
LT-6 (09/14)	388,103	1,320,879	27°57'53.88"	82°49'49.54"
LT-7 (09/14)	388,253	1,321,169	27°57'56.77"	82°49'47.88"

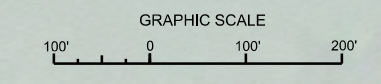


GRAPHIC SCALE
 0 100 200
 NOTES:
 1. REFER TO SURVEY NO. 14-119.
 2. SEE SHEET NO. 1 FOR SURVEY NOTES.

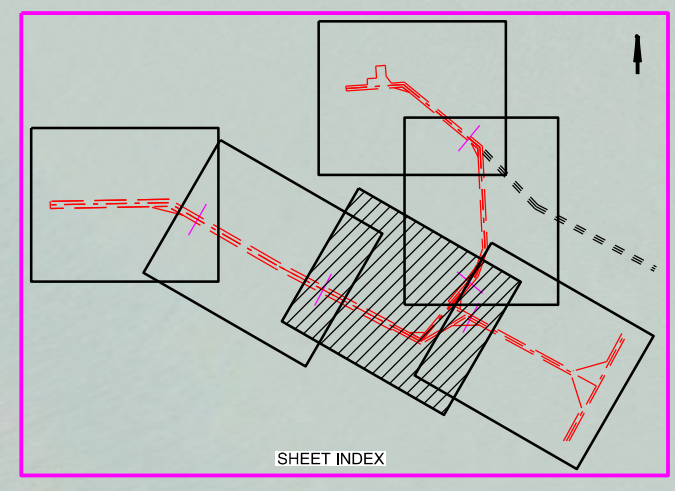
AIDS TO NAVIGATION	PLANE COORDINATES		LATITUDE	LONGITUDE
	X	Y		
LT-2 (09/14)	391,738	1,320,158	27°57'46.99"	82°49'08.95"
DBN-3 (09/14)	391,625	1,320,452	27°57'49.89"	82°49'10.23"
LT-8 (09/14)	389,460	1,320,175	27°57'47.00"	82°49'34.35"
LT-10 (09/14)	390,991	1,319,401	27°57'39.45"	82°49'17.22"
DBN-14 (09/14)	391,666	1,319,877	27°57'44.20"	82°49'08.73"



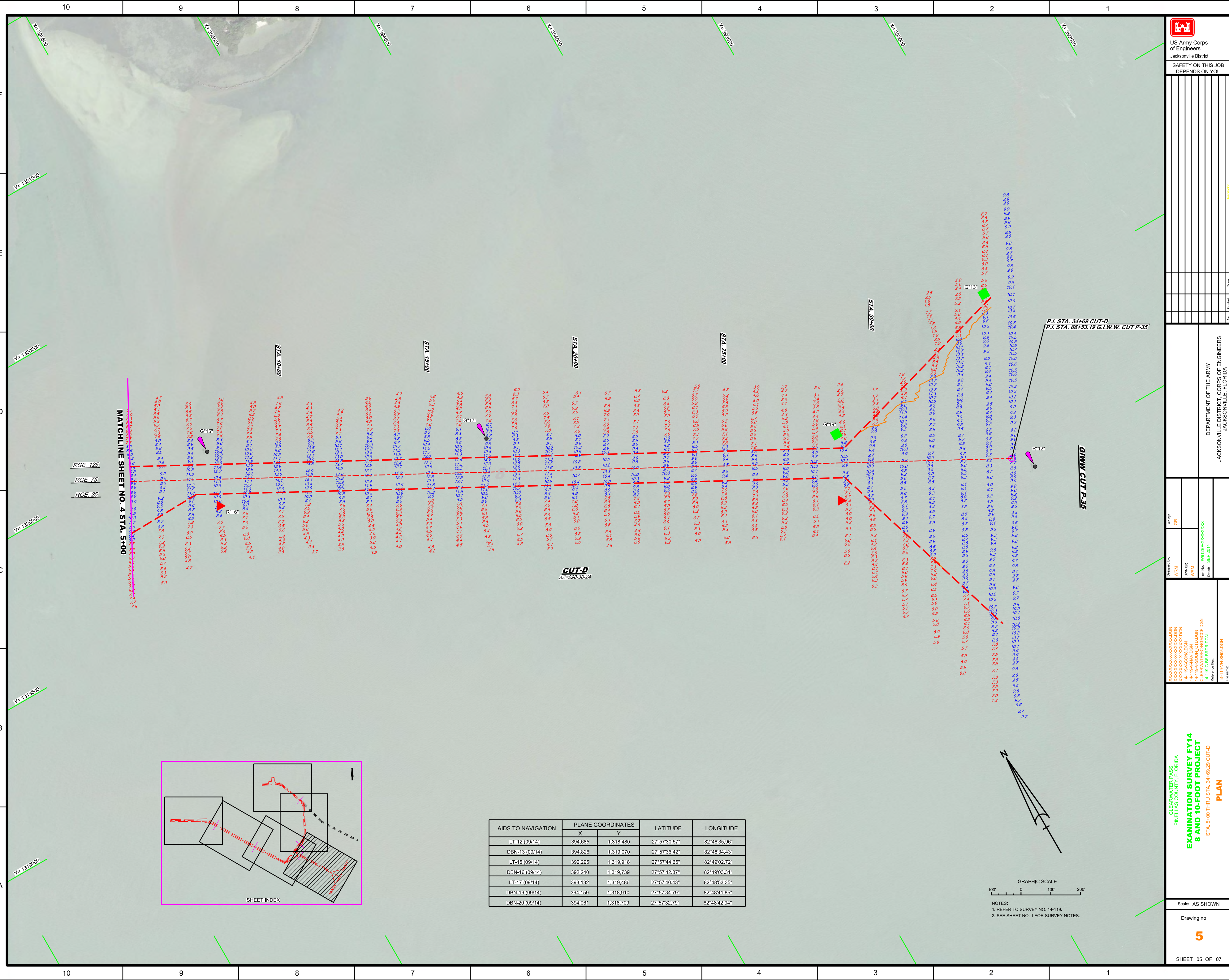
MATCHLINE SHEET NO. 03 STA. 11+00



NOTES:
1. REFER TO SURVEY NO. 14-119.
2. SEE SHEET NO. 1 FOR SURVEY NOTES.



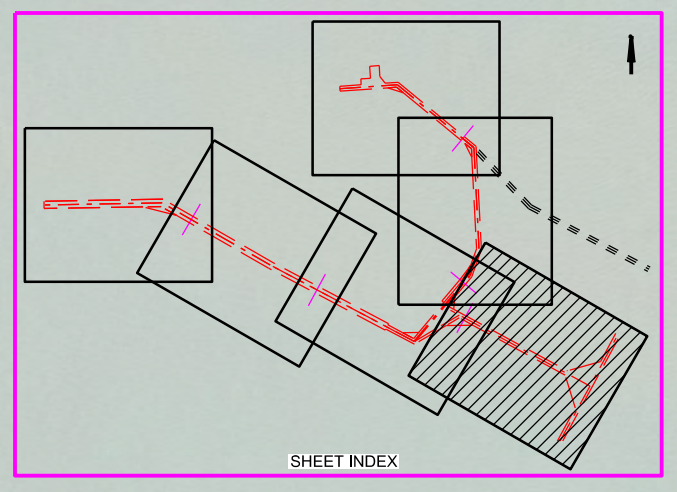
PCDSM GPS 77



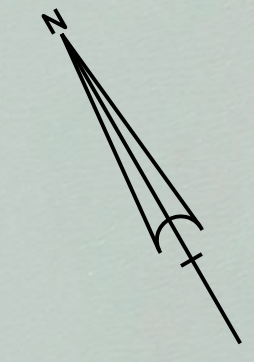
MATCHLINE SHEET NO. 4 STA. 5+00

RGE 125
RGE 75
RGE 25

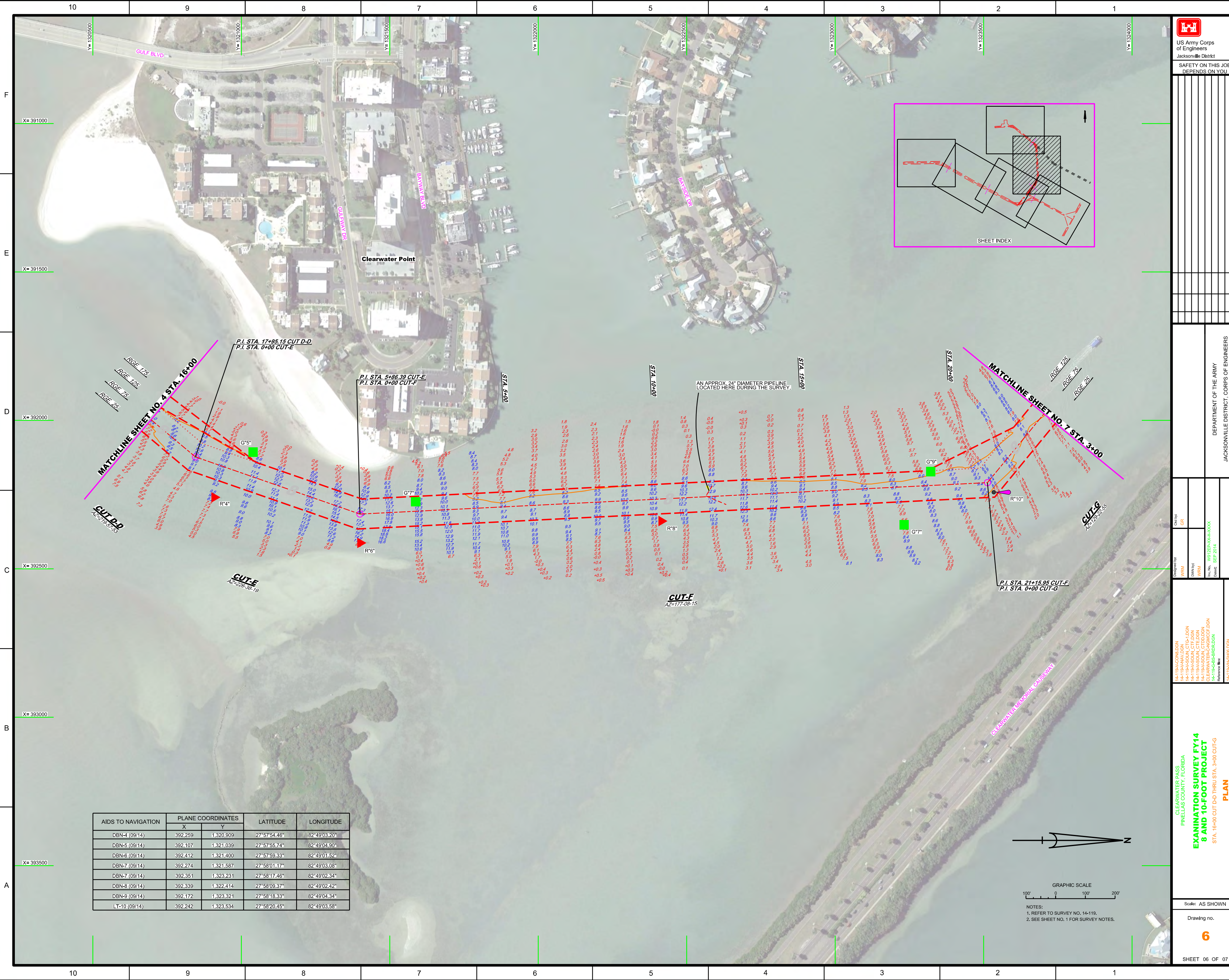
CUT-D
A2=288-30-24




AIDS TO NAVIGATION	PLANE COORDINATES		LATITUDE	LONGITUDE
	X	Y		
LT-12 (09/14)	394,685	1,318,480	27°57'30.57"	82°48'35.96"
DBN-13 (09/14)	394,826	1,319,070	27°57'36.42"	82°48'34.43"
LT-15 (09/14)	392,295	1,319,918	27°57'44.65"	82°49'02.72"
DBN-16 (09/14)	392,240	1,319,739	27°57'42.87"	82°49'03.31"
LT-17 (09/14)	393,132	1,319,486	27°57'40.43"	82°48'53.35"
DBN-19 (09/14)	394,159	1,318,910	27°57'34.79"	82°48'41.85"
DBN-20 (09/14)	394,061	1,318,709	27°57'32.79"	82°48'42.94"



NOTES:
1. REFER TO SURVEY NO. 14-119.
2. SEE SHEET NO. 1 FOR SURVEY NOTES.





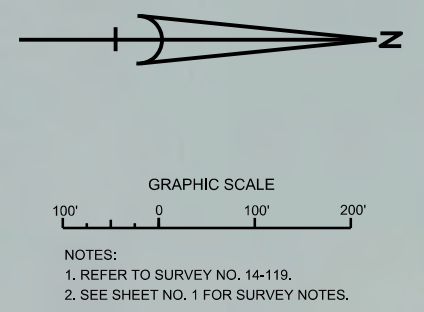
 US Army Corps of Engineers
 Jacksonville District
 SAFETY ON THIS JOB
 DEPENDS ON YOU

DEPARTMENT OF THE ARMY
 JACKSONVILLE DISTRICT, CORPS OF ENGINEERS
 JACKSONVILLE, FLORIDA

EXAMINATION SURVEY FY14
 8 AND 10-FOOT PROJECT
 STA. 16+00 CUT DO THRU STA. 3+00 CUT-G
PLAN

Scale: AS SHOWN
 Drawing no. **6**
 SHEET 06 OF 07

AIDS TO NAVIGATION	PLANE COORDINATES		LATITUDE	LONGITUDE
	X	Y		
DBN-4 (09/14)	392,259	1,320,909	27°57'54.46"	82°49'03.20"
DBN-5 (09/14)	392,107	1,321,039	27°57'55.74"	82°49'04.90"
DBN-6 (09/14)	392,412	1,321,400	27°57'59.33"	82°49'01.52"
DBN-7 (09/14)	392,274	1,321,587	27°58'01.17"	82°49'03.08"
DBN-7 (09/14)	392,351	1,323,231	27°58'17.46"	82°49'02.34"
DBN-8 (09/14)	392,339	1,322,414	27°58'09.37"	82°49'02.42"
DBN-9 (09/14)	392,172	1,323,321	27°58'18.33"	82°49'04.34"
LT-10 (09/14)	392,242	1,323,534	27°58'20.45"	82°49'03.58"



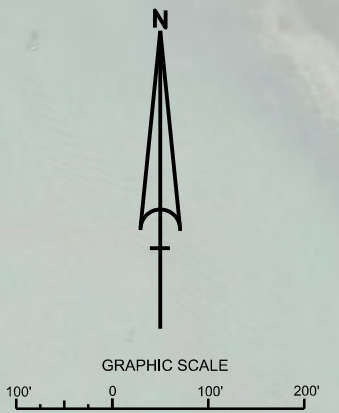
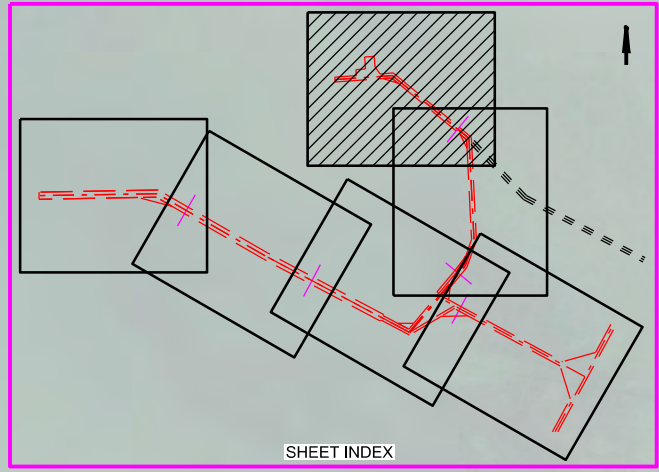
GRAPHIC SCALE
 100' 0 100' 200'
 NOTES:
 1. REFER TO SURVEY NO. 14-119.
 2. SEE SHEET NO. 1 FOR SURVEY NOTES.

AIDS TO NAVIGATION	PLANE COORDINATES		LATITUDE	LONGITUDE
	X	Y		
DBN-11 (09/14)	390,842	1,324,542	27°58'30.34"	82°49'19.26"
NO WAKE BUOY (09/14)	390,938	1,324,343	27°58'28.37"	82°49'18.19"
NO WAKE BUOY (09/14)	391,028	1,324,588	27°58'30.80"	82°49'17.19"

P.I. STA. 20+63.29 CUT-G
P.I. STA. 0+00 CUT-H

CUT-H
AZ=86-01-53

CUT-G
AZ=82-25-25



NOTES:
1. REFER TO SURVEY NO. 14-119.
2. SEE SHEET NO. 1 FOR SURVEY NOTES.

US Army Corps of Engineers
Jacksonville District

SAFETY ON THIS JOB
DEPENDS ON YOU

DEPARTMENT OF THE ARMY
JACKSONVILLE DISTRICT, CORPS OF ENGINEERS
JACKSONVILLE, FLORIDA

Designed by: GR
Checked by: GR
Drawn by: GR
Title: EXAMINATION SURVEY FY14
Date: SEP 2014

CLEARWATER PASS
PINELAS COUNTY, FLORIDA

**EXAMINATION SURVEY FY14
8 AND 10-FOOT PROJECT**

STA. 3+00 CUT-G THRU STA. 12+00 CUT-H

PLAN

Scale: AS SHOWN

Drawing no. **7**

SHEET 07 OF 07