

FERNANDINA HARBOR NASSAU COUNTY, FLORIDA EXAMINATION SURVEY FY14 35 & 36-FOOT PROJECT

SURVEY NOTES

- REFER TO SURVEY NO. 14-118.
 - DEPTHS DEPICTED BY THIS SURVEY ARE REFERENCED TO MLLW, TIDAL EPOCH 1983-2001 AS REPORTED BY THE NATIONAL OCEANIC AND ATMOSPHERIC ADMINISTRATION (NOAA). NOAA'S VDATUM MODEL WAS USED AND CALIBRATED TO THE PUBLISHED MLLW HEIGHTS OF THE BENCHMARKS ASSOCIATED WITH THE TIDE GAUGE SITES SPECIFIED BELOW:

NOAA TIDAL STATION 872-0030, FERNANDINA BEACH, AMELIA ISL. FL
 - TIDAL REDUCTIONS WERE OBTAINED UTILIZING A REAL-TIME KINEMATIC (RTK) GPS AND REFERENCED TO MLLW UTILIZING A HYPACK KINEMATIC TIDE DATUM (KTD) MODEL. KTD FILE NAME IS: "CAMDENGA-NASSAU-DUVAL-STJOHNS-FLAGLER-01FEB2011.KTD".
 - ALL ELEVATIONS ARE BELOW THE CHART DATUM UNLESS PRECEDED BY A (+) SIGN.
 - PLANE COORDINATES ARE BASED ON THE TRANSVERSE MERCATOR PROJECTION FOR THE EAST ZONE OF FLORIDA AND REFERENCED TO NORTH AMERICAN DATUM OF 1983 (NAD83).
 - ALL AZIMUTHS ARE GRID; RECKONED CLOCKWISE FROM SOUTH.
 - ALL STATIONING REFERS TO THE CENTERLINE OF THE CHANNEL.
 - THIS SURVEY WAS PERFORMED USING REAL-TIME KINEMATIC (RTK) GPS POSITIONING WITH THE FOLLOWING REFERENCE BASE LOCATION:

REFERENCE BASE LOCATED AT "BATH HOUSE ARP" (OPUS PID: BBCB08) FOR CUT-1 THRU CUT-3
REFERENCE BASE LOCATED AT "RICHARD E BONNER" (OPUS PID: BBCK39) FOR CUT-4 THRU CUT-10

TIDE STAFF WAS SET NEAR FERNANDINA MUNICIPAL MARINA FROM "RICHARD E BONNER"
 - VERTICAL MEASUREMENTS WERE MADE USING AN R2SONIC MODEL 2024 MULTI-BEAM SYSTEM OPERATING AT 240 KHZ (HIGH FREQUENCY). ALL SOUNDINGS SHOWN ARE IN HIGH FREQUENCY.
- | VESSEL | DATE OF SURVEY | AREA SURVEYED |
|--------|----------------|------------------|
| S/B-46 | 30 JUN 2014 | CUT-1 THRU CUT-4 |
| S/B-46 | 1 JUL 2014 | CUT-5 THRU CUT-9 |
| S/B-46 | 2 JUL 2014 | CUT-10 |
- AIDS TO NAVIGATION WERE LOCATED DURING THIS SURVEY.
 - THE INFORMATION DEPICTED ON THIS MAP REPRESENTS THE RESULTS OF OF SURVEYS MADE ON THE DATES INDICATED ABOVE AND CAN ONLY BE CONSIDERED AS INDICATING THE GENERAL CONDITIONS AT THAT TIME. THIS CHART IS SOLELY FOR THE DISTRIBUTION OF AVAILABLE DEPTHS AT THE TIME OF THE SURVEY AND IS NOT TO BE USED FOR NAVIGATION.
 - SURVEY ACCURACY PERFORMANCE STANDARDS, QUALITY CONTROL, AND QUALITY ASSURANCE REQUIREMENTS WERE FOLLOWED DURING THIS SURVEY IN ACCORDANCE WITH USACE EM 1110-2-1003, HYDROGRAPHIC SURVEYING, 30 NOV 13.

LEGEND	
	GPS MONUMENT
	LIGHTED BEACON
	GREEN DAY BEACON
	RED DAY BEACON
	RED LIGHTED BUOY
	GREEN LIGHTED BUOY
	CAN BUOY
	NUN BUOY
	TIDE STAFF
	PROJECT DEPTH

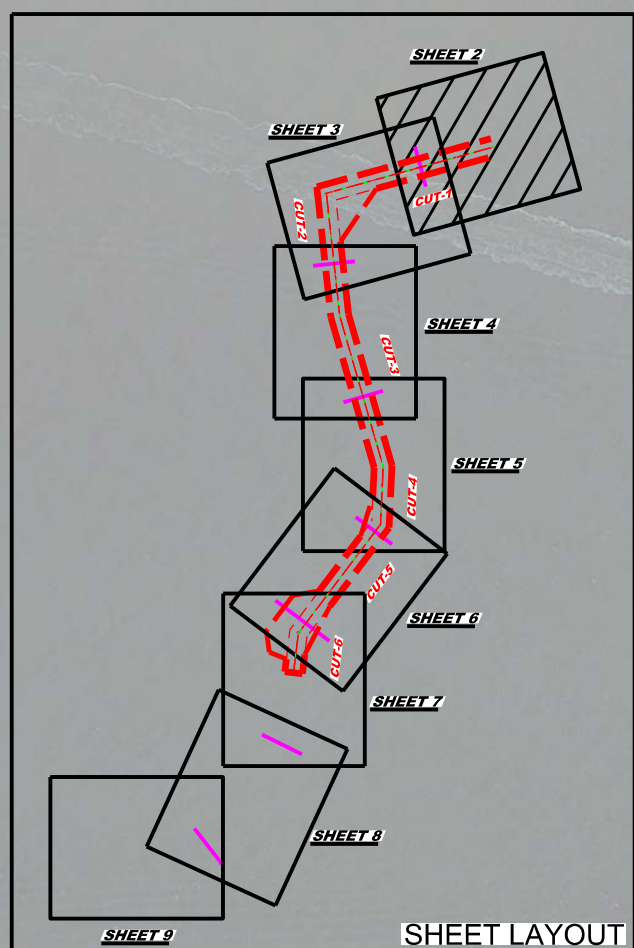
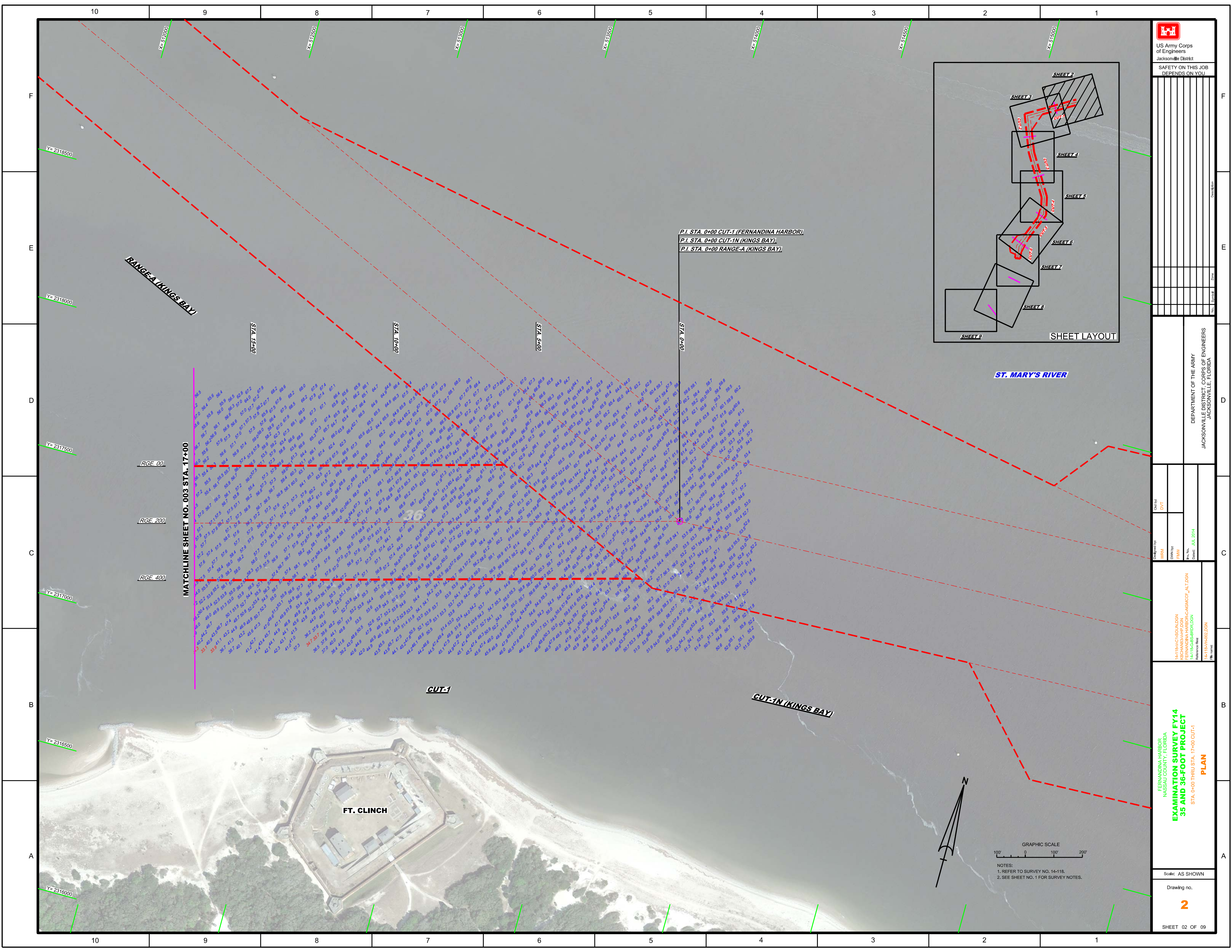
US Army Corps of Engineers
Jacksonville District
SAFETY ON THIS JOB DEPENDS ON YOU

Checked by:	DVT
Designed by:	WRM
Drawn by:	FWW
File No.:	14-118-NASSAU-CON
Project No.:	14-118-35-36-FOOT-CON
Date:	JUL 2014

DEPARTMENT OF THE ARMY
JACKSONVILLE DISTRICT, CORPS OF ENGINEERS
JACKSONVILLE, FLORIDA

FERNANDINA HARBOR
NASSAU COUNTY, FLORIDA
**EXAMINATION SURVEY FY14
35 AND 36-FOOT PROJECT**
INDEX, LOCATION AND VICINITY
MAP

Scale: AS SHOWN
Drawing no. **1**
SHEET 01 OF 09



P.I. STA. 0+00 CUT-1 (FERNANDINA HARBOR)
 P.I. STA. 0+00 CUT-1N (KINGS BAY)
 P.I. STA. 0+00 RANGE-A (KINGS BAY)

MATCHLINE SHEET NO. 003 STA. 17+00

RGE. 00
 RGE. 200
 RGE. 400

CUT-1

CUT-IN (KINGS BAY)

FT. CLINCH



GRAPHIC SCALE
 100' 0 100' 200'
 NOTES:
 1. REFER TO SURVEY NO. 14-118.
 2. SEE SHEET NO. 1 FOR SURVEY NOTES.

<p>US Army Corps of Engineers Jacksonville District</p>	
<p>SAFETY ON THIS JOB DEPENDS ON YOU</p>	
<p>DEPARTMENT OF THE ARMY JACKSONVILLE DISTRICT, CORPS OF ENGINEERS JACKSONVILLE, FLORIDA</p>	
<p>Checked By: DVT</p>	<p>Designed By: WRM</p>
<p>Drawn By: FHW</p>	<p>Reference File: 14-118-HAROLDEN</p>
<p>File No: 14-118-ES-BRIDGON</p>	<p>Project Name: FERNANDINA HARBOR-CANAL-CEP_AULTON</p>
<p>Date: JUL 2014</p>	<p>Examined By: 14-118-HAROLDEN</p>
<p>FERNANDINA HARBOR NASSAU COUNTY, FLORIDA EXAMINATION SURVEY FY14 35 AND 36-FOOT PROJECT STA. 0+00 THRU STA. 17+00 CUT-1 PLAN</p>	
<p>Scale: AS SHOWN</p>	<p>Drawing no. 2</p>
<p>SHEET 02 OF 09</p>	

P.L. STA. 39+10.06 CUT-1
P.L. STA. 0+00 CUT-2

STA. 5+00

STA. 10+00

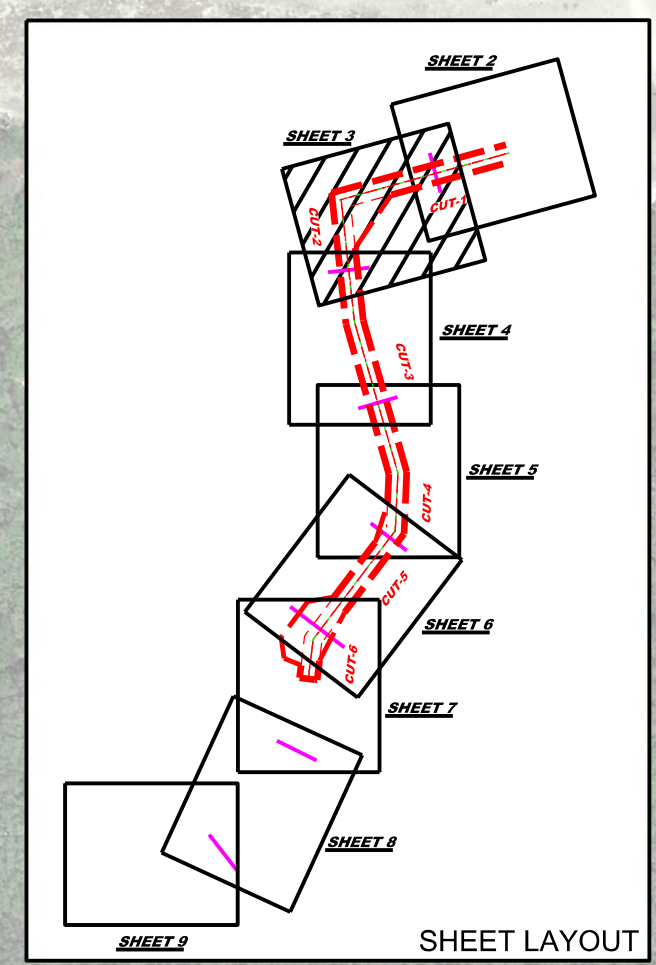
STA. 15+00

STA. 20+00

MATCHLINE SHEET NO. 004 STA. 21+00

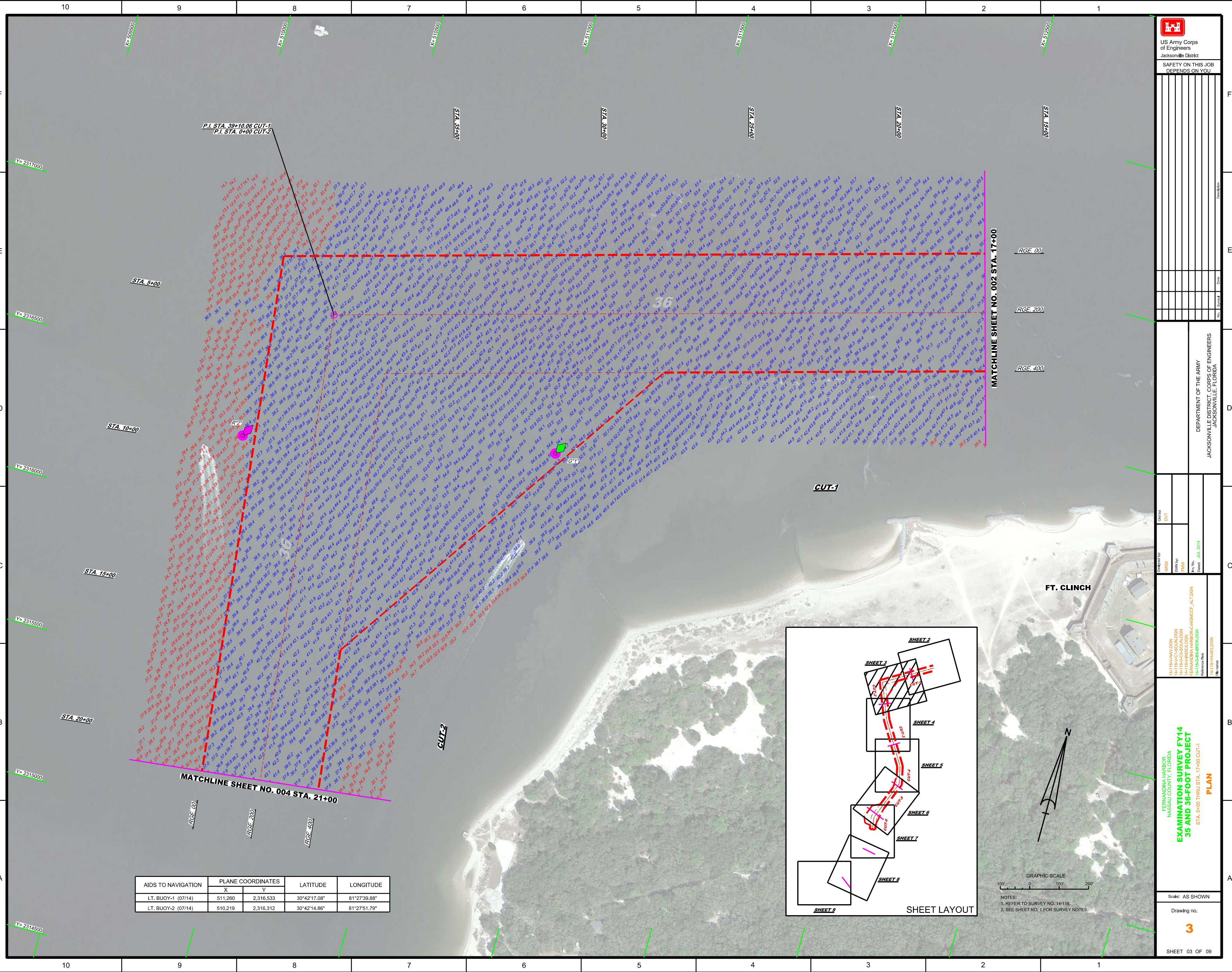
MATCHLINE SHEET NO. 002 STA. 17+00

AIDS TO NAVIGATION	PLANE COORDINATES		LATITUDE	LONGITUDE
	X	Y		
LT. BUOY-1 (07/14)	511,260	2,316,533	30°42'17.08"	81°27'39.88"
LT. BUOY-2 (07/14)	510,219	2,316,312	30°42'14.86"	81°27'51.79"



GRAPHIC SCALE
100' 0 100' 200'

NOTES:
1. REFER TO SURVEY NO. 14-118.
2. SEE SHEET NO. 1 FOR SURVEY NOTES.



AIDS TO NAVIGATION	PLANE COORDINATES		LATITUDE	LONGITUDE
	X	Y		
LT. BUOY-3 (07/14)	510,891	2,315,093	30°42'02.82"	81°27'44.04"
LT. BUOY-4 (07/14)	510,546	2,313,637	30°41'48.39"	81°27'47.92"
LT. BUOY-5 (07/14)	511,005	2,313,629	30°41'48.33"	81°27'42.67"



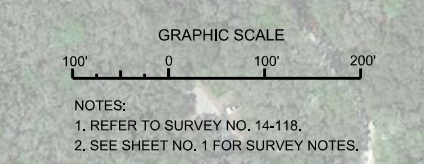
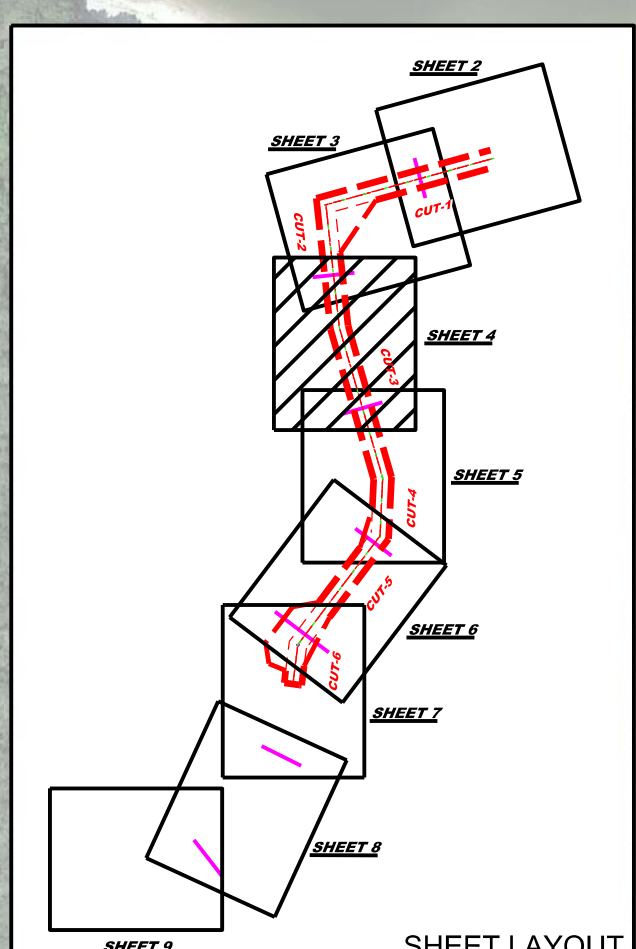
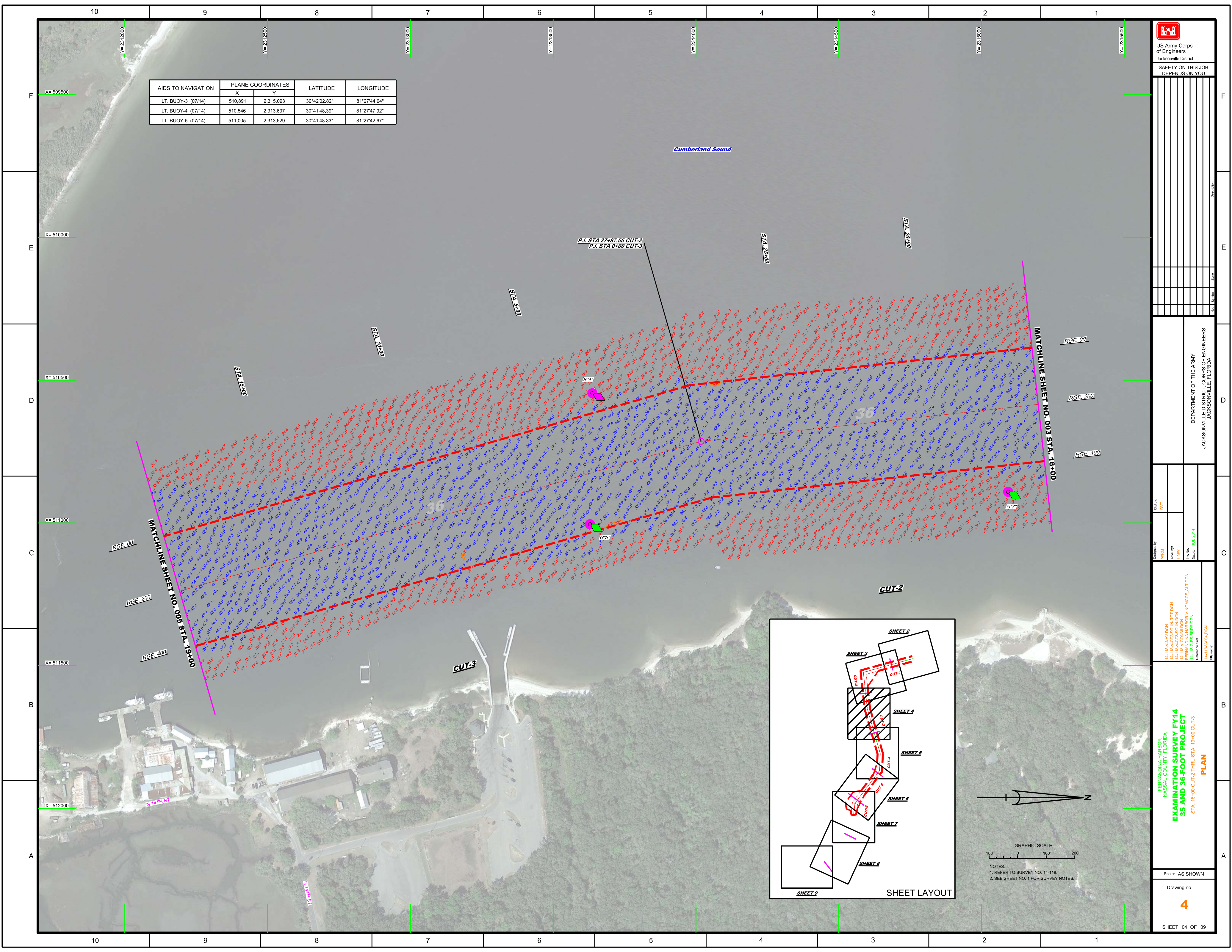
US Army Corps
of Engineers
Jacksonville District

SAFETY ON THIS JOB
DEPENDS ON YOU

DEPARTMENT OF THE ARMY
JACKSONVILLE DISTRICT, CORPS OF ENGINEERS
JACKSONVILLE, FLORIDA

Drawn by: WRM
Checked by: DVT
Scale: AS SHOWN
Date: JUL 2014

44-18A-CUT-2
44-18A-CUT-3
44-18A-CUT-4
44-18A-CUT-5
44-18A-CUT-6
44-18A-CUT-7
44-18A-CUT-8
44-18A-CUT-9
44-18A-CUT-10
44-18A-CUT-11
44-18A-CUT-12
44-18A-CUT-13
44-18A-CUT-14
44-18A-CUT-15
44-18A-CUT-16
44-18A-CUT-17
44-18A-CUT-18
44-18A-CUT-19
44-18A-CUT-20
44-18A-CUT-21
44-18A-CUT-22
44-18A-CUT-23
44-18A-CUT-24
44-18A-CUT-25
44-18A-CUT-26
44-18A-CUT-27
44-18A-CUT-28
44-18A-CUT-29
44-18A-CUT-30
44-18A-CUT-31
44-18A-CUT-32
44-18A-CUT-33
44-18A-CUT-34
44-18A-CUT-35
44-18A-CUT-36
44-18A-CUT-37
44-18A-CUT-38
44-18A-CUT-39
44-18A-CUT-40
44-18A-CUT-41
44-18A-CUT-42
44-18A-CUT-43
44-18A-CUT-44
44-18A-CUT-45
44-18A-CUT-46
44-18A-CUT-47
44-18A-CUT-48
44-18A-CUT-49
44-18A-CUT-50
44-18A-CUT-51
44-18A-CUT-52
44-18A-CUT-53
44-18A-CUT-54
44-18A-CUT-55
44-18A-CUT-56
44-18A-CUT-57
44-18A-CUT-58
44-18A-CUT-59
44-18A-CUT-60
44-18A-CUT-61
44-18A-CUT-62
44-18A-CUT-63
44-18A-CUT-64
44-18A-CUT-65
44-18A-CUT-66
44-18A-CUT-67
44-18A-CUT-68
44-18A-CUT-69
44-18A-CUT-70
44-18A-CUT-71
44-18A-CUT-72
44-18A-CUT-73
44-18A-CUT-74
44-18A-CUT-75
44-18A-CUT-76
44-18A-CUT-77
44-18A-CUT-78
44-18A-CUT-79
44-18A-CUT-80
44-18A-CUT-81
44-18A-CUT-82
44-18A-CUT-83
44-18A-CUT-84
44-18A-CUT-85
44-18A-CUT-86
44-18A-CUT-87
44-18A-CUT-88
44-18A-CUT-89
44-18A-CUT-90
44-18A-CUT-91
44-18A-CUT-92
44-18A-CUT-93
44-18A-CUT-94
44-18A-CUT-95
44-18A-CUT-96
44-18A-CUT-97
44-18A-CUT-98
44-18A-CUT-99
44-18A-CUT-100



AIDS TO NAVIGATION	PLANE COORDINATES		LATITUDE	LONGITUDE
	X	Y		
LT. BUOY-6 (07/14)	511,452	2,310,547	30°41'17.84"	81°27'37.40"
LT-7 (07/14)	511,992	2,310,547	30°41'18.82"	81°27'31.22"

US Army Corps of Engineers
Jacksonville District

SAFETY ON THIS JOB
DEPENDS ON YOU

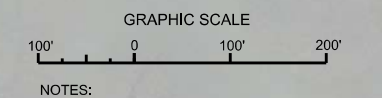
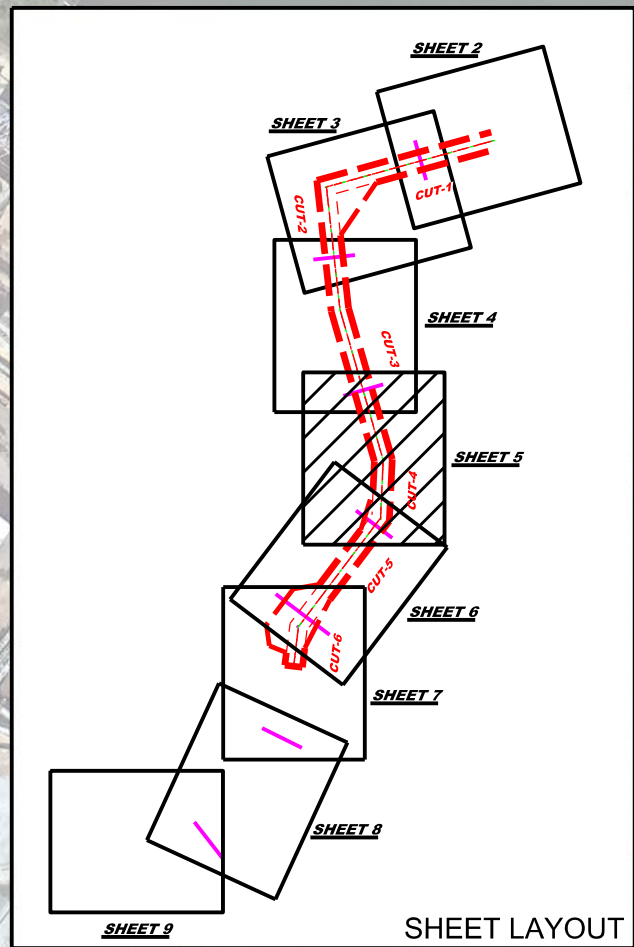
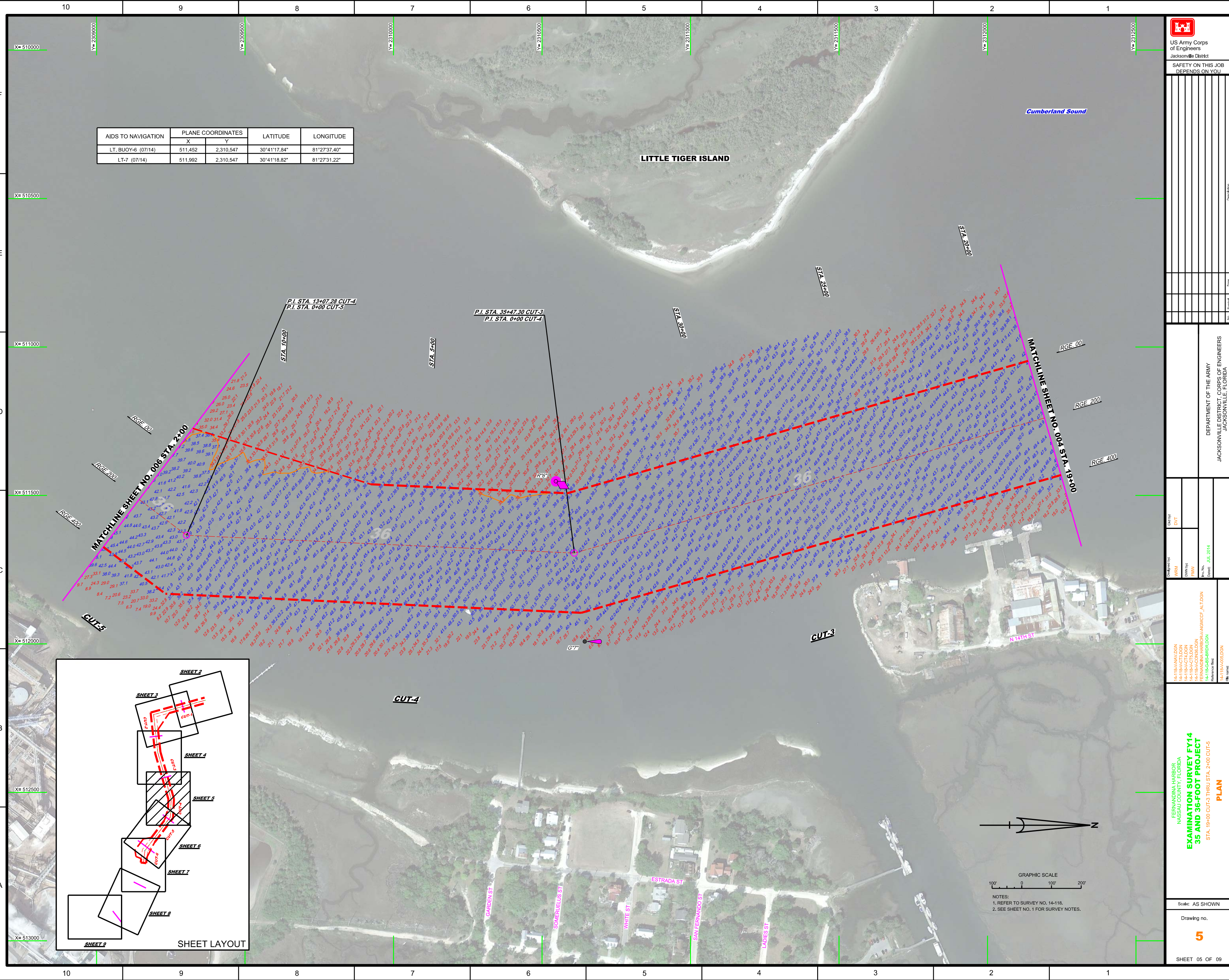
DEPARTMENT OF THE ARMY
JACKSONVILLE DISTRICT, CORPS OF ENGINEERS
JACKSONVILLE, FLORIDA

Checked by: DVT
Designed by: WRM
Drawn by: FHW
Project Name: FERNANDINA HARBOR AVANCE PLAN
Date: JUL 2014

44-18A-AV-001.DGN
44-18A-CT-001.DGN
44-18A-CT-002.DGN
44-18A-CT-003.DGN
44-18A-CT-004.DGN
44-18A-CT-005.DGN
44-18A-CT-006.DGN
44-18A-CT-007.DGN
44-18A-CT-008.DGN
44-18A-CT-009.DGN
44-18A-CT-010.DGN
44-18A-CT-011.DGN
44-18A-CT-012.DGN
44-18A-CT-013.DGN
44-18A-CT-014.DGN
44-18A-CT-015.DGN
44-18A-CT-016.DGN
44-18A-CT-017.DGN
44-18A-CT-018.DGN
44-18A-CT-019.DGN
44-18A-CT-020.DGN
44-18A-CT-021.DGN
44-18A-CT-022.DGN
44-18A-CT-023.DGN
44-18A-CT-024.DGN
44-18A-CT-025.DGN
44-18A-CT-026.DGN
44-18A-CT-027.DGN
44-18A-CT-028.DGN
44-18A-CT-029.DGN
44-18A-CT-030.DGN
44-18A-CT-031.DGN
44-18A-CT-032.DGN
44-18A-CT-033.DGN
44-18A-CT-034.DGN
44-18A-CT-035.DGN
44-18A-CT-036.DGN
44-18A-CT-037.DGN
44-18A-CT-038.DGN
44-18A-CT-039.DGN
44-18A-CT-040.DGN
44-18A-CT-041.DGN
44-18A-CT-042.DGN
44-18A-CT-043.DGN
44-18A-CT-044.DGN
44-18A-CT-045.DGN
44-18A-CT-046.DGN
44-18A-CT-047.DGN
44-18A-CT-048.DGN
44-18A-CT-049.DGN
44-18A-CT-050.DGN
44-18A-CT-051.DGN
44-18A-CT-052.DGN
44-18A-CT-053.DGN
44-18A-CT-054.DGN
44-18A-CT-055.DGN
44-18A-CT-056.DGN
44-18A-CT-057.DGN
44-18A-CT-058.DGN
44-18A-CT-059.DGN
44-18A-CT-060.DGN
44-18A-CT-061.DGN
44-18A-CT-062.DGN
44-18A-CT-063.DGN
44-18A-CT-064.DGN
44-18A-CT-065.DGN
44-18A-CT-066.DGN
44-18A-CT-067.DGN
44-18A-CT-068.DGN
44-18A-CT-069.DGN
44-18A-CT-070.DGN
44-18A-CT-071.DGN
44-18A-CT-072.DGN
44-18A-CT-073.DGN
44-18A-CT-074.DGN
44-18A-CT-075.DGN
44-18A-CT-076.DGN
44-18A-CT-077.DGN
44-18A-CT-078.DGN
44-18A-CT-079.DGN
44-18A-CT-080.DGN
44-18A-CT-081.DGN
44-18A-CT-082.DGN
44-18A-CT-083.DGN
44-18A-CT-084.DGN
44-18A-CT-085.DGN
44-18A-CT-086.DGN
44-18A-CT-087.DGN
44-18A-CT-088.DGN
44-18A-CT-089.DGN
44-18A-CT-090.DGN
44-18A-CT-091.DGN
44-18A-CT-092.DGN
44-18A-CT-093.DGN
44-18A-CT-094.DGN
44-18A-CT-095.DGN
44-18A-CT-096.DGN
44-18A-CT-097.DGN
44-18A-CT-098.DGN
44-18A-CT-099.DGN
44-18A-CT-100.DGN


FERNANDINA HARBOR
NASSAU COUNTY, FLORIDA
**EXAMINATION SURVEY FY14
35 AND 36-FOOT PROJECT**
STA. 19+00 CUT-3 THRU STA. 2+00 CUT-5
PLAN

Scale: AS SHOWN
Drawing no. **5**
SHEET 05 OF 09



NOTES:
1. REFER TO SURVEY NO. 14-118.
2. SEE SHEET NO. 1 FOR SURVEY NOTES.

AIDS TO NAVIGATION	PLANE COORDINATES		LATITUDE	LONGITUDE
	X	Y		
LT. BUOY-8 (0714)	511,219	2,309,037	30°41'02.89"	81°27'40.00"



US Army Corps of Engineers
Jacksonville District
SAFETY ON THIS JOB
DEPENDS ON YOU

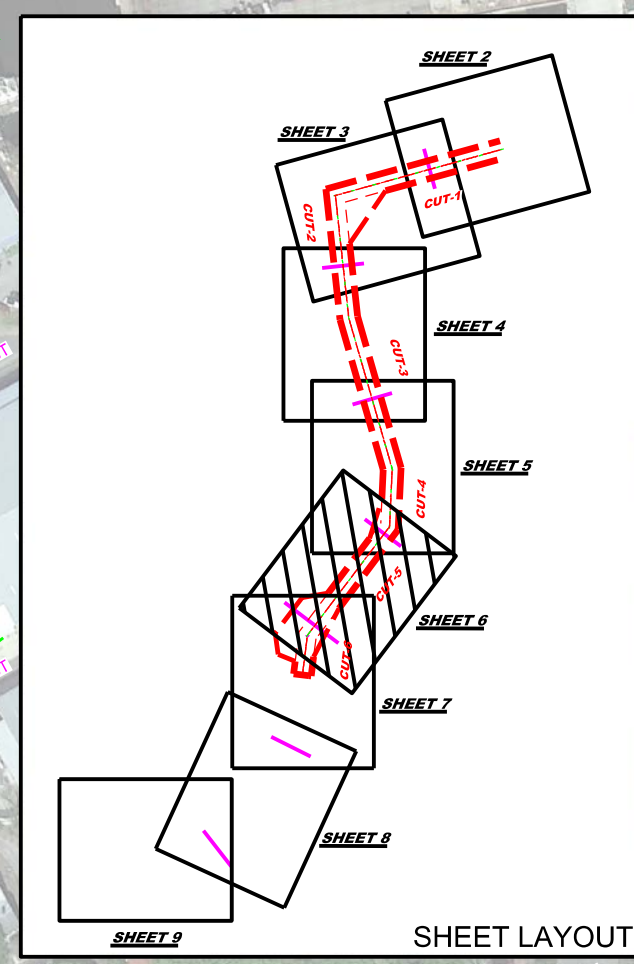
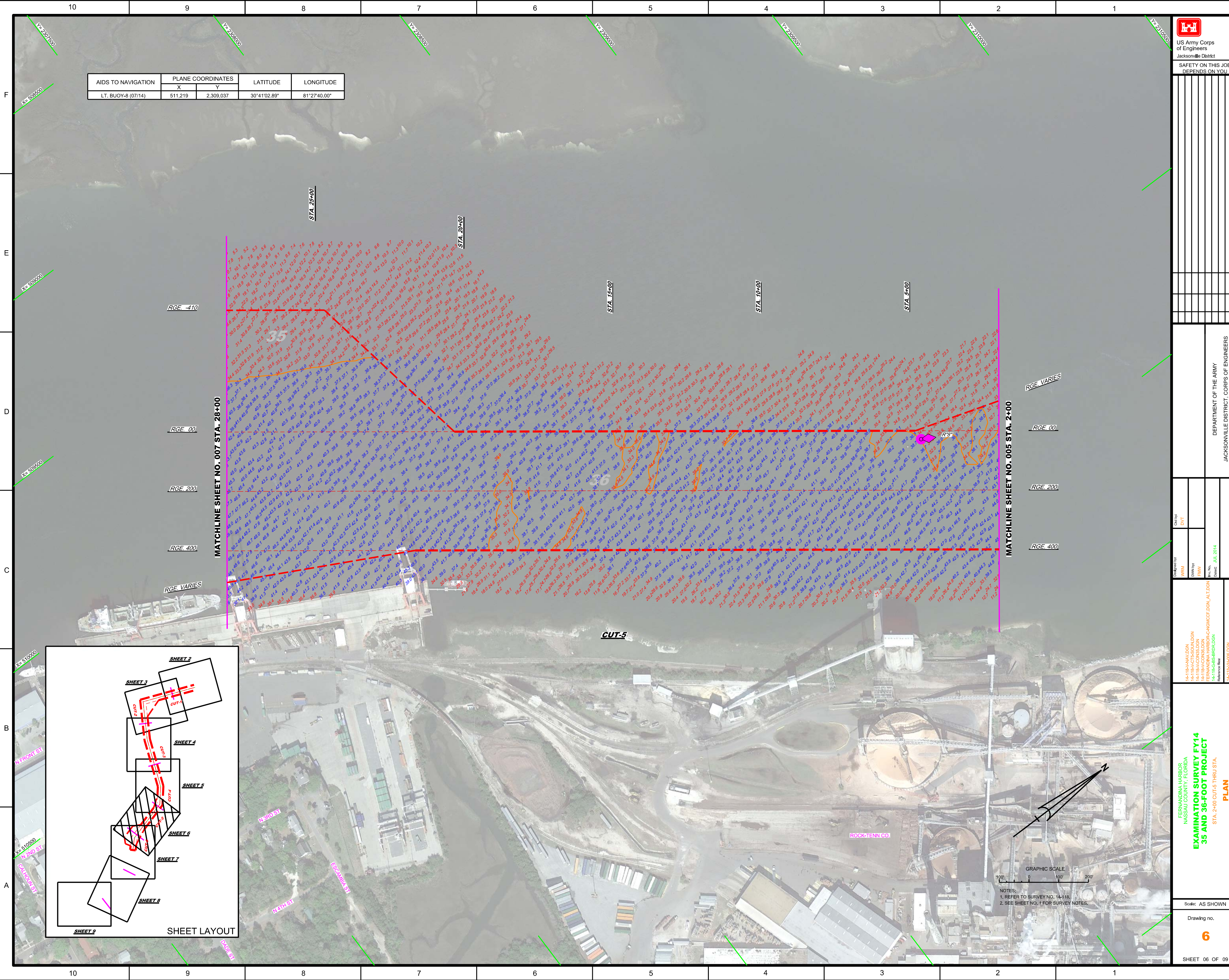
DEPARTMENT OF THE ARMY
JACKSONVILLE DISTRICT, CORPS OF ENGINEERS
JACKSONVILLE, FLORIDA

Drawn by: DVT
Checked by: WRM
Date: JUL 2014

44-18A-HARV-DGN
44-18A-FACTS-DGN
44-18A-CON-SDGN
44-18A-CORR-SDGN
44-18A-GRS-BRD-DGN
44-18A-HARV-DGN

FERNANDINA HARBOR
NASSAU COUNTY, FLORIDA
**EXAMINATION SURVEY FY14
35 AND 36-FOOT PROJECT**
STA. 2+00 CUT-5 THRU STA. 2+00
PLAN

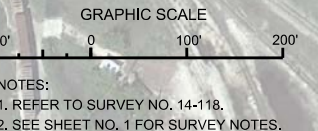
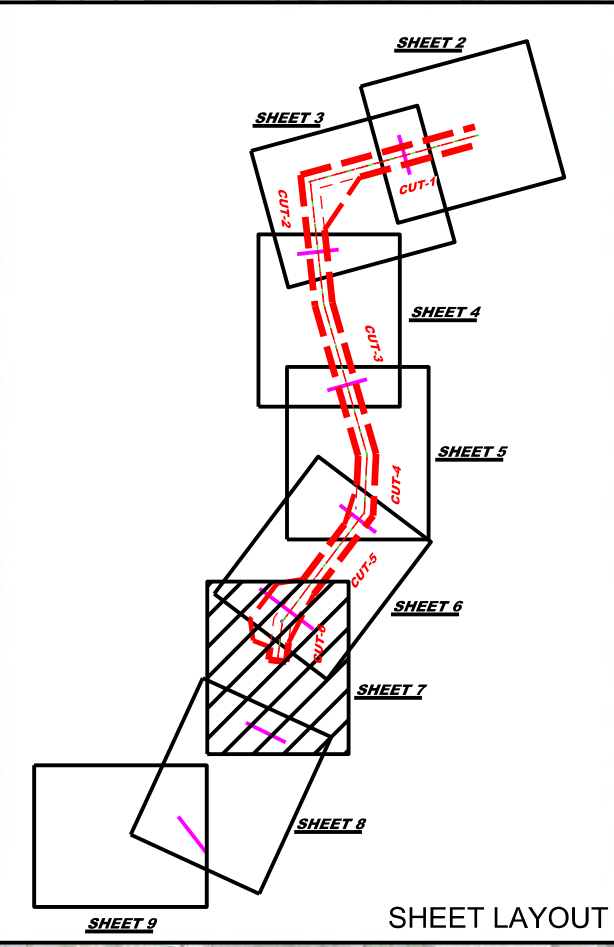
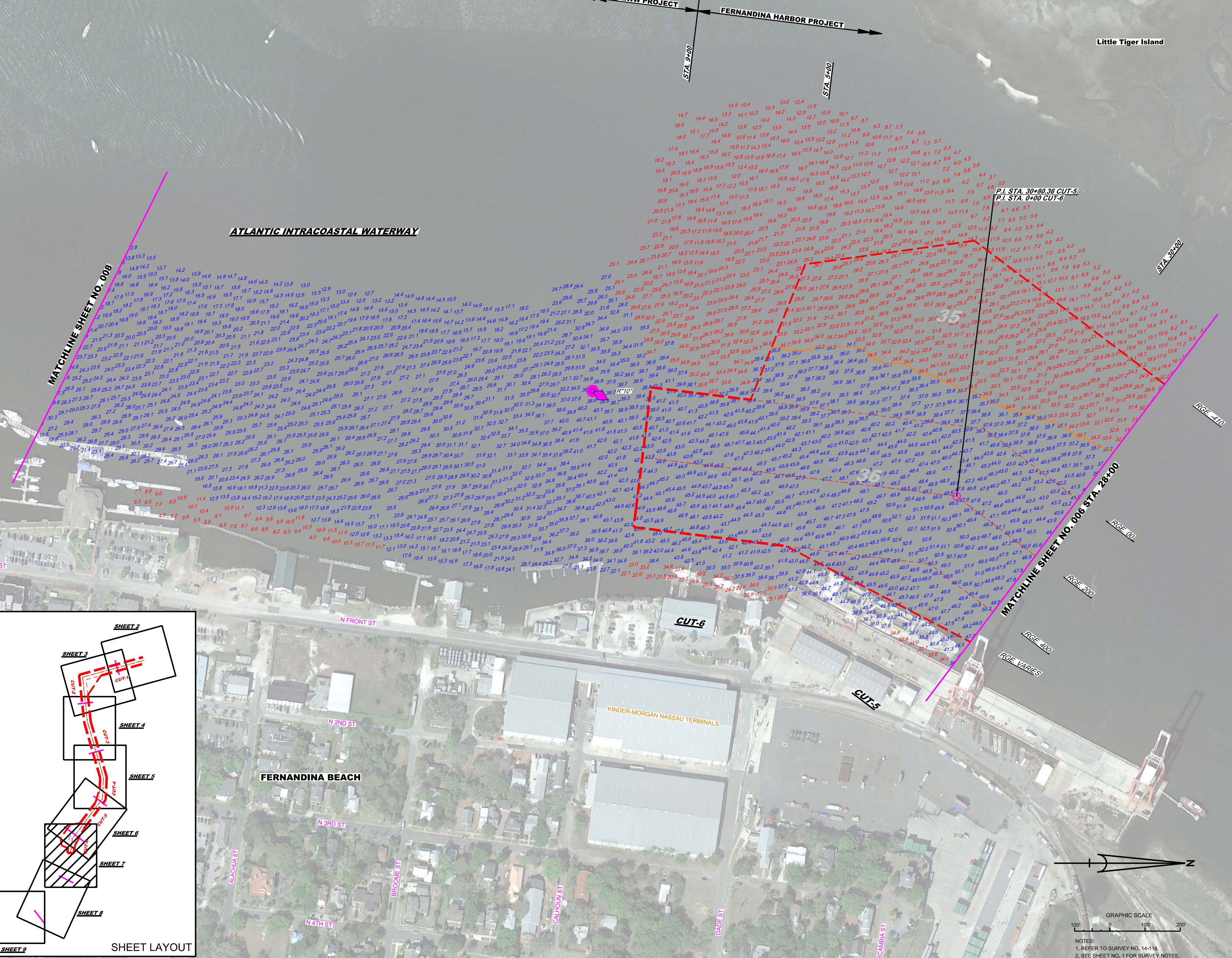
Scale: AS SHOWN
Drawing no. **6**
SHEET 06 OF 09



GRAPHIC SCALE
0 100 200'

NOTES:
1. REFER TO SURVEY NO. 14-118.
2. SEE SHEET NO. 1 FOR SURVEY NOTES.

AIDS TO NAVIGATION	PLANE COORDINATES		LATITUDE	LONGITUDE
	X	Y		
LT. BUOY-10 (07/14)	509,479	2,305,809	30°40'30.87"	81°27'59.77"



NOTES:
1. REFER TO SURVEY NO. 14-118.
2. SEE SHEET NO. 1 FOR SURVEY NOTES.

1	
2	
3	
4	
5	
6	
7	
8	
9	
10	

DEPARTMENT OF THE ARMY
JACKSONVILLE DISTRICT, CORPS OF ENGINEERS
JACKSONVILLE, FLORIDA

Examined By: WRM
Checked By: WRM
Designed By: WRM
Date: JUL 2014

14-118-AVY-DDN
14-118-ACR-BLNDN
14-118-ACR-T&S-NDN
14-118-ACR-C&C-NDN
14-118-ACR-B&D-NDN
14-118-ACR-RR-NDN
14-118-ACR-RR-NDN

FERNANDINA HARBOR,
NASSAU COUNTY, FLORIDA
**EXAMINATION SURVEY FY14
35 AND 36-FOOT PROJECT**
STA. 28+00 CUT-5 THRU STA. 9+00 CUT-6
PLAN

US Army Corps of Engineers Jacksonville District	
SAFETY ON THIS JOB DEPENDS ON YOU	

DEPARTMENT OF THE ARMY
JACKSONVILLE DISTRICT, CORPS OF ENGINEERS
JACKSONVILLE, FLORIDA

144118AV/DGS
144118AC/CR & S/SON/DGN
144118CS/BS-BROLDGN
Reference Sheet:
144118AV-H01/DGN
File Name:
Date Created: JUL 14, 2014

ERRANDINA HARBOR
NASSAU COUNTY, FLORIDA
**EXAMINATION SURVEY FY14
35 AND 36-FOOT PROJECT**
AWWW UNCONTROLLED
PLAN

Scale: AS SHOWN
Drawing No.
8

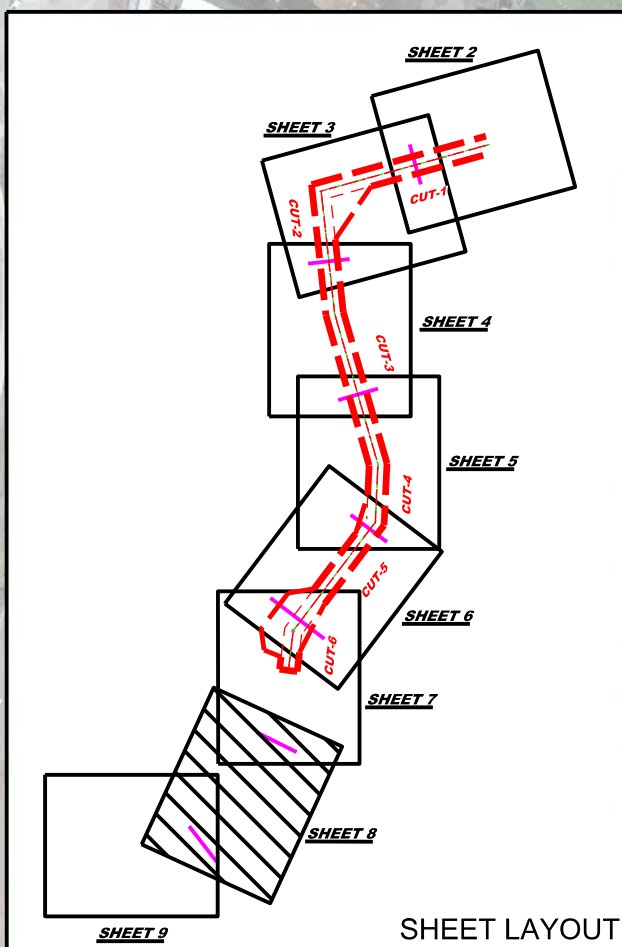
AIDS TO NAVIGATION	PLANE COORDINATES		LATITUDE	LONGITUDE
	X	Y		
LT-12 (07/14)	508.895	2,303.946	30°40'12.40"	81°28'06.36"
DBN-14 (07/14)	507.687	2,302.515	30°39'58.19"	81°28'20.13"

ATLANTIC INTRACOASTAL WATERWAY

MATCHLINE SHEET NO. 009

MATCHLINE SHEET NO. 007

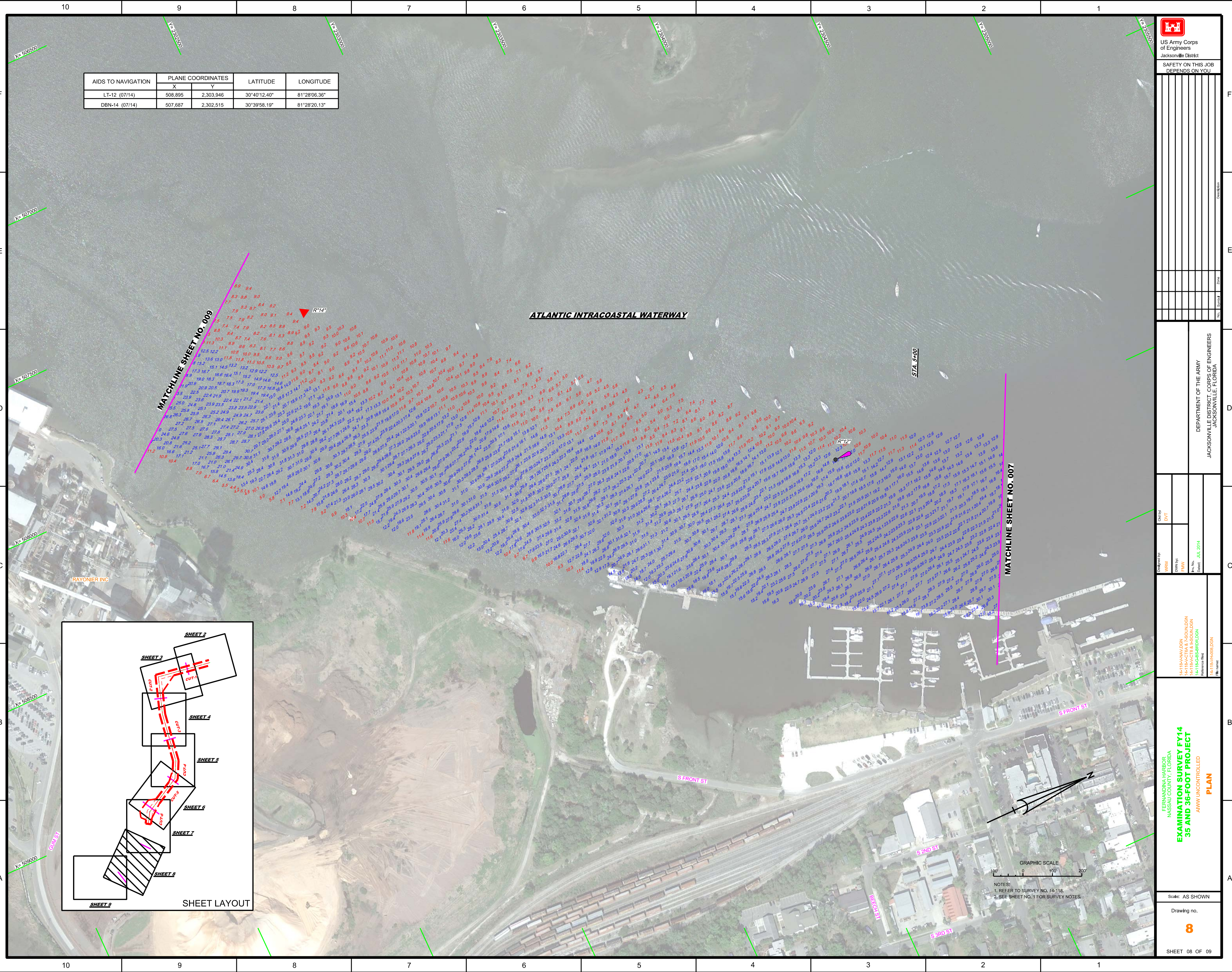
STA. 5+00



SHEET LAYOUT



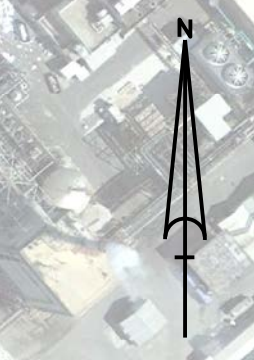
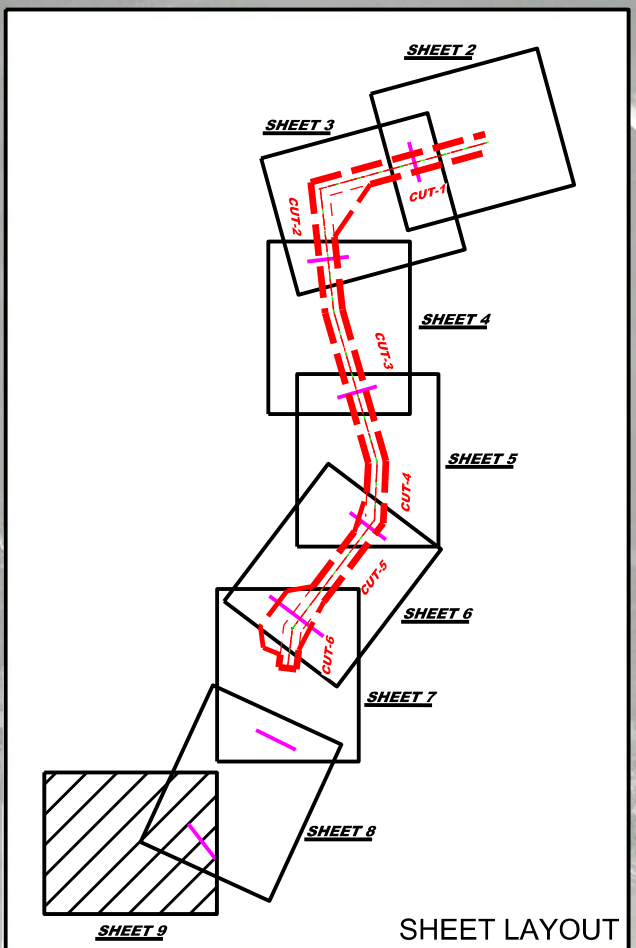
NOTES:
1. REFER TO SURVEY NO. 14-118.
2. SEE SHEET NO. 1 FOR SURVEY NOTES.



AIDS TO NAVIGATION	PLANE COORDINATES		LATITUDE	LONGITUDE
	X	Y		
DBN-16 (07/14)	506,097	2,301,817	30°39'51.21"	81°28'38.30"

ATLANTIC INTRACOASTAL WATERWAY

MATCHLINE SHEET NO. 008



NOTES:
1. REFER TO SURVEY NO. 14-118.
2. SEE SHEET NO. 1 FOR SURVEY NOTES.

Designed by	WMB
Checked by	DVT
Drawn by	FWW
Field Notes	14-118-008-008.DGN
Date	JUL 2014

FLORIDA HARBOR
NASSAU COUNTY, FLORIDA
**EXAMINATION SURVEY FY14
35 AND 36-FOOT PROJECT**
AWW UNCONTROLLED
PLAN

DEPARTMENT OF THE ARMY
JACKSONVILLE DISTRICT, CORPS OF ENGINEERS
JACKSONVILLE, FLORIDA