

CHARLOTTE HARBOR - BOCA GRANDE PASS CHARLOTTE AND LEE COUNTIES, FLORIDA EXAMINATION SURVEY FY14 32-FOOT PROJECT

SURVEY NOTES

1. REFER TO SURVEY NO. 14-116.
2. SOUNDINGS ARE IN FEET AND TENTHS AND REFER TO NOAA'S REPORTED MEAN LOWER LOW WATER (MLLW) OF THE 1983-2001 TIDAL EPOCH.
3. TIDAL REDUCTIONS WERE OBTAINED UTILIZING A REAL-TIME KINEMATIC (RTK) GPS AND REFERENCED TO MLLW UTILIZING A HYPACK KINEMATIC TIDE DATUM (KTD) MODEL. KTD FILE NAME IS: "SPC-FL-WEST-2010-12-07.KTD".
4. ALL ELEVATIONS ARE BELOW THE CHART DATUM UNLESS PRECEDED BY A (+) SIGN.
5. PLANE COORDINATES ARE BASED ON THE TRANSVERSE MERCATOR PROJECTION FOR THE WEST ZONE OF FLORIDA AND REFERENCED TO NORTH AMERICAN DATUM OF 1983 (NAD83).
6. ALL AZIMUTHS ARE GRID; RECKONED CLOCKWISE FROM SOUTH.
7. ALL STATIONING REFERS TO THE CENTERLINE OF THE CHANNEL.
8. THIS SURVEY WAS PERFORMED USING REAL-TIME AND POST-PROCESSED KINEMATIC GPS POSITIONING WITH THE FOLLOWING REFERENCE BASE LOCATION:

REFERENCE BASE LOCATED AT "4022 36 002" (OPUS PID: AG9463)
REFERENCE BASE LOCATED AT "GPSHOLT" (OPUS PID: AD8700)
9. VERTICAL MEASUREMENTS WERE MADE USING AN ODOM DUAL-FREQUENCY TRANSDUCER OPERATING AT 24200 KHZ. ALL SOUNDINGS SHOWN ARE IN HIGH FREQUENCY.
10. AIDS TO NAVIGATION WERE LOCATED DURING THIS SURVEY.
11. THE INFORMATION DEPICTED ON THIS MAP REPRESENTS THE RESULTS OF SURVEYS MADE ON THE DATES INDICATED ABOVE AND CAN ONLY BE CONSIDERED AS INDICATING THE GENERAL CONDITIONS AT THAT TIME. THIS CHART IS SOLELY FOR THE DISTRIBUTION OF AVAILABLE DEPTHS AT THE TIME OF THE SURVEY.
12. SURVEY ACCURACY PERFORMANCE STANDARDS, QUALITY CONTROL, AND QUALITY ASSURANCE REQUIREMENTS WERE FOLLOWED DURING THIS SURVEY IN ACCORDANCE WITH USACE EM 1110-2-1003, HYDROGRAPHIC SURVEYING, 30 NOV 13.
13. SURVEY PERFORMED BY HYATT SURVEY SERVICES, INC., BRADENTON, FL.

LEGEND	
◦ BM	BENCHMARK
⦿	LIGHTED BEACON
□	GREEN DAYBEACON
△	RED DAYBEACON
⊙	RED LIGHTED BUOY
⊙	GREEN LIGHTED BUOY
⊙	CAN BUOY
⊙	NUN BUOY
⊙	TIDE STAFF
8	PROJECT DEPTH

US Army Corps of Engineers
Jacksonville District

SAFETY ON THIS JOB
DEPENDS ON YOU

DESIGNED BY: WRM
DRAWN BY: WRM
CHECKED BY: WRM
DATE: 02/10/14

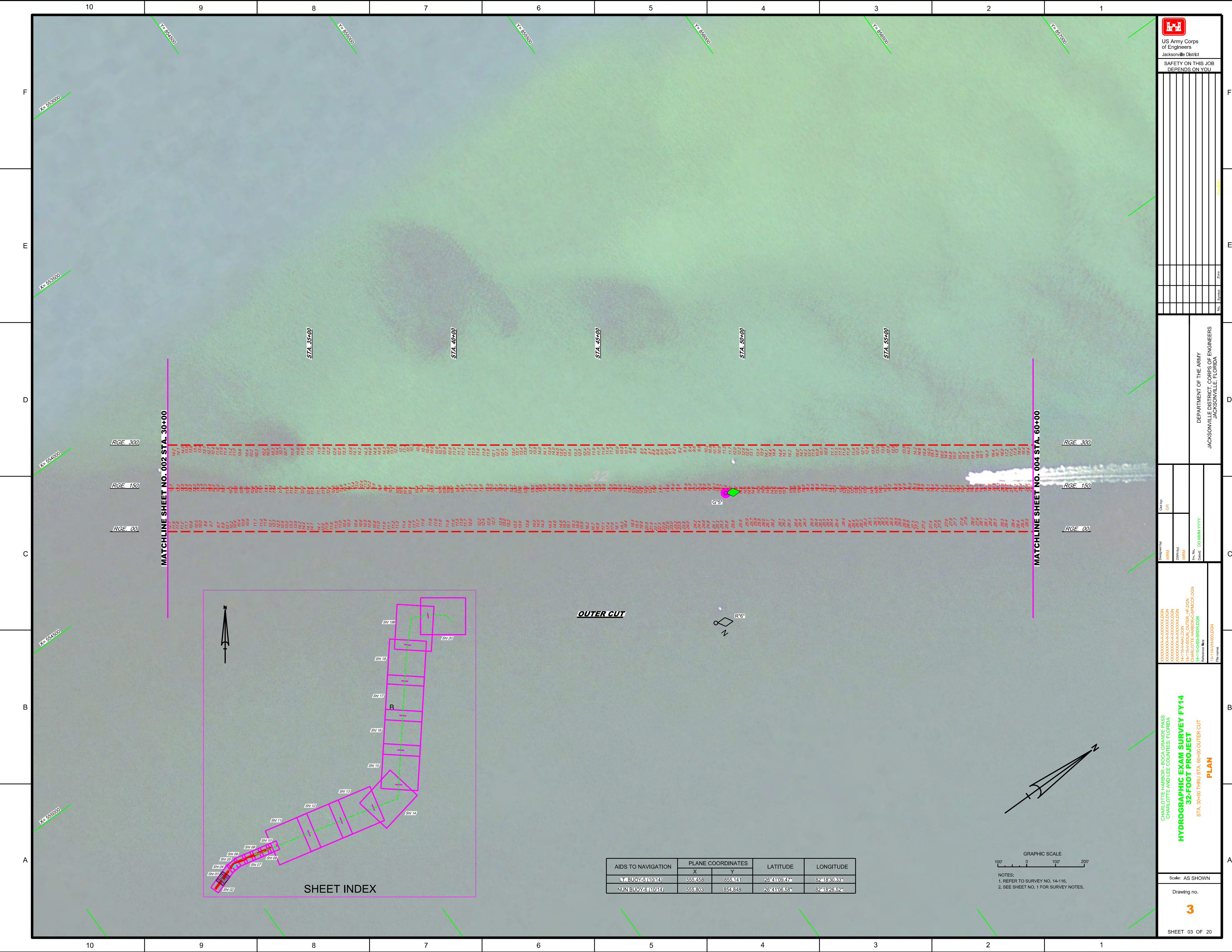
FILE NAME: 14-116-HYATT.DGN
PROJECT: CHARLOTTE HARBOR - BOCA GRANDE PASS
32-FOOT PROJECT

DEPARTMENT OF THE ARMY
JACKSONVILLE DISTRICT, CORPS OF ENGINEERS
JACKSONVILLE, FLORIDA

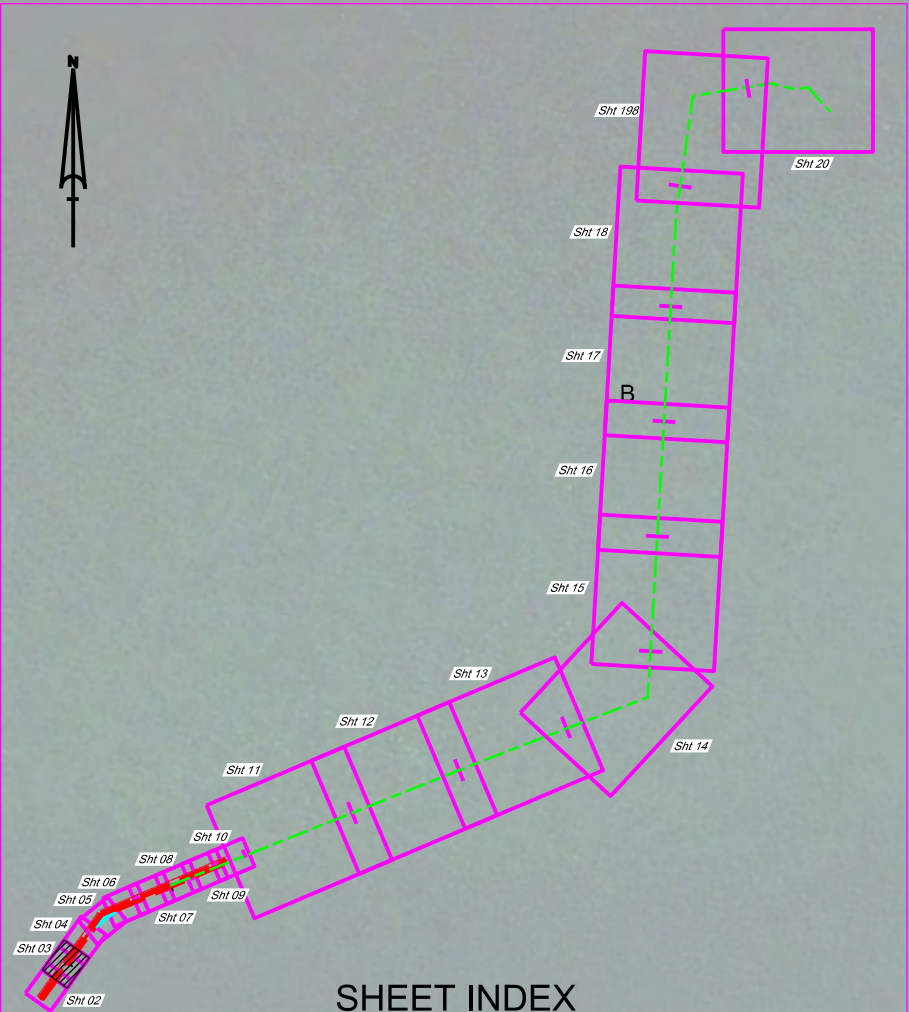
Scale: AS SHOWN

Drawing no. **1**

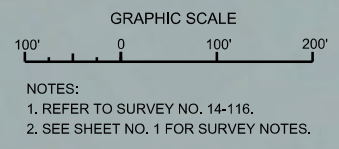
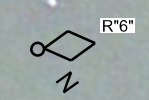
SHEET 01 OF 20



Station	RGE. 00	RGE. 150	RGE. 300
32+00	102.1	102.1	102.1
32+10	101.8	101.8	101.8
32+20	101.5	101.5	101.5
32+30	101.2	101.2	101.2
32+40	100.9	100.9	100.9
32+50	100.6	100.6	100.6
32+60	100.3	100.3	100.3
32+70	100.0	100.0	100.0
32+80	99.7	99.7	99.7
32+90	99.4	99.4	99.4
33+00	99.1	99.1	99.1
33+10	98.8	98.8	98.8
33+20	98.5	98.5	98.5
33+30	98.2	98.2	98.2
33+40	97.9	97.9	97.9
33+50	97.6	97.6	97.6
33+60	97.3	97.3	97.3
33+70	97.0	97.0	97.0
33+80	96.7	96.7	96.7
33+90	96.4	96.4	96.4
34+00	96.1	96.1	96.1
34+10	95.8	95.8	95.8
34+20	95.5	95.5	95.5
34+30	95.2	95.2	95.2
34+40	94.9	94.9	94.9
34+50	94.6	94.6	94.6
34+60	94.3	94.3	94.3
34+70	94.0	94.0	94.0
34+80	93.7	93.7	93.7
34+90	93.4	93.4	93.4
35+00	93.1	93.1	93.1
35+10	92.8	92.8	92.8
35+20	92.5	92.5	92.5
35+30	92.2	92.2	92.2
35+40	91.9	91.9	91.9
35+50	91.6	91.6	91.6
35+60	91.3	91.3	91.3
35+70	91.0	91.0	91.0
35+80	90.7	90.7	90.7
35+90	90.4	90.4	90.4
36+00	90.1	90.1	90.1
36+10	89.8	89.8	89.8
36+20	89.5	89.5	89.5
36+30	89.2	89.2	89.2
36+40	88.9	88.9	88.9
36+50	88.6	88.6	88.6
36+60	88.3	88.3	88.3
36+70	88.0	88.0	88.0
36+80	87.7	87.7	87.7
36+90	87.4	87.4	87.4
37+00	87.1	87.1	87.1
37+10	86.8	86.8	86.8
37+20	86.5	86.5	86.5
37+30	86.2	86.2	86.2
37+40	85.9	85.9	85.9
37+50	85.6	85.6	85.6
37+60	85.3	85.3	85.3
37+70	85.0	85.0	85.0
37+80	84.7	84.7	84.7
37+90	84.4	84.4	84.4
38+00	84.1	84.1	84.1
38+10	83.8	83.8	83.8
38+20	83.5	83.5	83.5
38+30	83.2	83.2	83.2
38+40	82.9	82.9	82.9
38+50	82.6	82.6	82.6
38+60	82.3	82.3	82.3
38+70	82.0	82.0	82.0
38+80	81.7	81.7	81.7
38+90	81.4	81.4	81.4
39+00	81.1	81.1	81.1
39+10	80.8	80.8	80.8
39+20	80.5	80.5	80.5
39+30	80.2	80.2	80.2
39+40	79.9	79.9	79.9
39+50	79.6	79.6	79.6
39+60	79.3	79.3	79.3
39+70	79.0	79.0	79.0
39+80	78.7	78.7	78.7
39+90	78.4	78.4	78.4
40+00	78.1	78.1	78.1
40+10	77.8	77.8	77.8
40+20	77.5	77.5	77.5
40+30	77.2	77.2	77.2
40+40	76.9	76.9	76.9
40+50	76.6	76.6	76.6
40+60	76.3	76.3	76.3
40+70	76.0	76.0	76.0
40+80	75.7	75.7	75.7
40+90	75.4	75.4	75.4
41+00	75.1	75.1	75.1
41+10	74.8	74.8	74.8
41+20	74.5	74.5	74.5
41+30	74.2	74.2	74.2
41+40	73.9	73.9	73.9
41+50	73.6	73.6	73.6
41+60	73.3	73.3	73.3
41+70	73.0	73.0	73.0
41+80	72.7	72.7	72.7
41+90	72.4	72.4	72.4
42+00	72.1	72.1	72.1
42+10	71.8	71.8	71.8
42+20	71.5	71.5	71.5
42+30	71.2	71.2	71.2
42+40	70.9	70.9	70.9
42+50	70.6	70.6	70.6
42+60	70.3	70.3	70.3
42+70	70.0	70.0	70.0
42+80	69.7	69.7	69.7
42+90	69.4	69.4	69.4
43+00	69.1	69.1	69.1
43+10	68.8	68.8	68.8
43+20	68.5	68.5	68.5
43+30	68.2	68.2	68.2
43+40	67.9	67.9	67.9
43+50	67.6	67.6	67.6
43+60	67.3	67.3	67.3
43+70	67.0	67.0	67.0
43+80	66.7	66.7	66.7
43+90	66.4	66.4	66.4
44+00	66.1	66.1	66.1
44+10	65.8	65.8	65.8
44+20	65.5	65.5	65.5
44+30	65.2	65.2	65.2
44+40	64.9	64.9	64.9
44+50	64.6	64.6	64.6
44+60	64.3	64.3	64.3
44+70	64.0	64.0	64.0
44+80	63.7	63.7	63.7
44+90	63.4	63.4	63.4
45+00	63.1	63.1	63.1
45+10	62.8	62.8	62.8
45+20	62.5	62.5	62.5
45+30	62.2	62.2	62.2
45+40	61.9	61.9	61.9
45+50	61.6	61.6	61.6
45+60	61.3	61.3	61.3
45+70	61.0	61.0	61.0
45+80	60.7	60.7	60.7
45+90	60.4	60.4	60.4
46+00	60.1	60.1	60.1
46+10	59.8	59.8	59.8
46+20	59.5	59.5	59.5
46+30	59.2	59.2	59.2
46+40	58.9	58.9	58.9
46+50	58.6	58.6	58.6
46+60	58.3	58.3	58.3
46+70	58.0	58.0	58.0
46+80	57.7	57.7	57.7
46+90	57.4	57.4	57.4
47+00	57.1	57.1	57.1
47+10	56.8	56.8	56.8
47+20	56.5	56.5	56.5
47+30	56.2	56.2	56.2
47+40	55.9	55.9	55.9
47+50	55.6	55.6	55.6
47+60	55.3	55.3	55.3
47+70	55.0	55.0	55.0
47+80	54.7	54.7	54.7
47+90	54.4	54.4	54.4
48+00	54.1	54.1	54.1
48+10	53.8	53.8	53.8
48+20	53.5	53.5	53.5
48+30	53.2	53.2	53.2
48+40	52.9	52.9	52.9
48+50	52.6	52.6	52.6
48+60	52.3	52.3	52.3
48+70	52.0	52.0	52.0
48+80	51.7	51.7	51.7
48+90	51.4	51.4	51.4
49+00	51.1	51.1	51.1
49+10	50.8	50.8	50.8
49+20	50.5	50.5	50.5
49+30	50.2	50.2	50.2
49+40	49.9	49.9	49.9
49+50	49.6	49.6	49.6
49+60	49.3	49.3	49.3
49+70	49.0	49.0	49.0
49+80	48.7	48.7	48.7
49+90	48.4	48.4	48.4
50+00	48.1	48.1	48.1
50+10	47.8	47.8	47.8
50+20	47.5	47.5	47.5
50+30	47.2	47.2	47.2
50+40	46.9	46.9	46.9
50+50	46.6	46.6	46.6
50+60	46.3	46.3	46.3
50+70	46.0	46.0	46.0
50+80	45.7	45.7	45.7
50+90	45.4	45.4	45.4
51+00	45.1	45.1	45.1
51+10	44.8	44.8	44.8
51+20	44.5	44.5	44.5
51+30	44.2	44.2	44.2
51+40	43.9	43.9	43.9
51+50	43.6	43.6	43.6
51+60	43.3	43.3	43.3
51+70	43.0	43.0	43.0
51+80	42.7	42.7	42.7
51+90	42.4	42.4	42.4
52+00	42.1	42.1	42.1
52+10	41.8	41.8	41.8
52+20	41.5	41.5	41.5
52+30	41.2	41.2	41.2
52+40	40.9	40.9	40.9
52+50	40.6	40.6	40.6
52+60	40.3	40.3	40.3
52+70	40.0	40.0	40.0
52+80	39.7	39.7	39.7
52+90	39.4	39.4	39.4
53+00	39.1	39.1	39.1
53+10	38.8	38.8	38.8
53+20	38.5	38.5	38.5
53+30	38.2	38.2	38.2
53+40	37.9	37.9	37.9
53+50	37.6	37.6	37.6
53+60	37.3	37.3	37.3
53+70	37.0	37.0	37.0
53+80	36.7	36.7	36.7
53+90	36.4	36.4	36.4
54+00	36.1	36.1	36.1
54+10	35.8	35.8	35.8
54+20	35.5	35.5	35.5
54+30	35.2	35.2	35.2
54+40	34.9	34.9	34.9
54+50	34.6	34.6	34.6
54+60	34.3	34.3	34.3
54+70	34.0	34.0	34.0
54+80	33.7	33.7	33.7
54+90	33.4	33.4	33.4
55+00	33.1	33.1	33.1



OUTER CUT



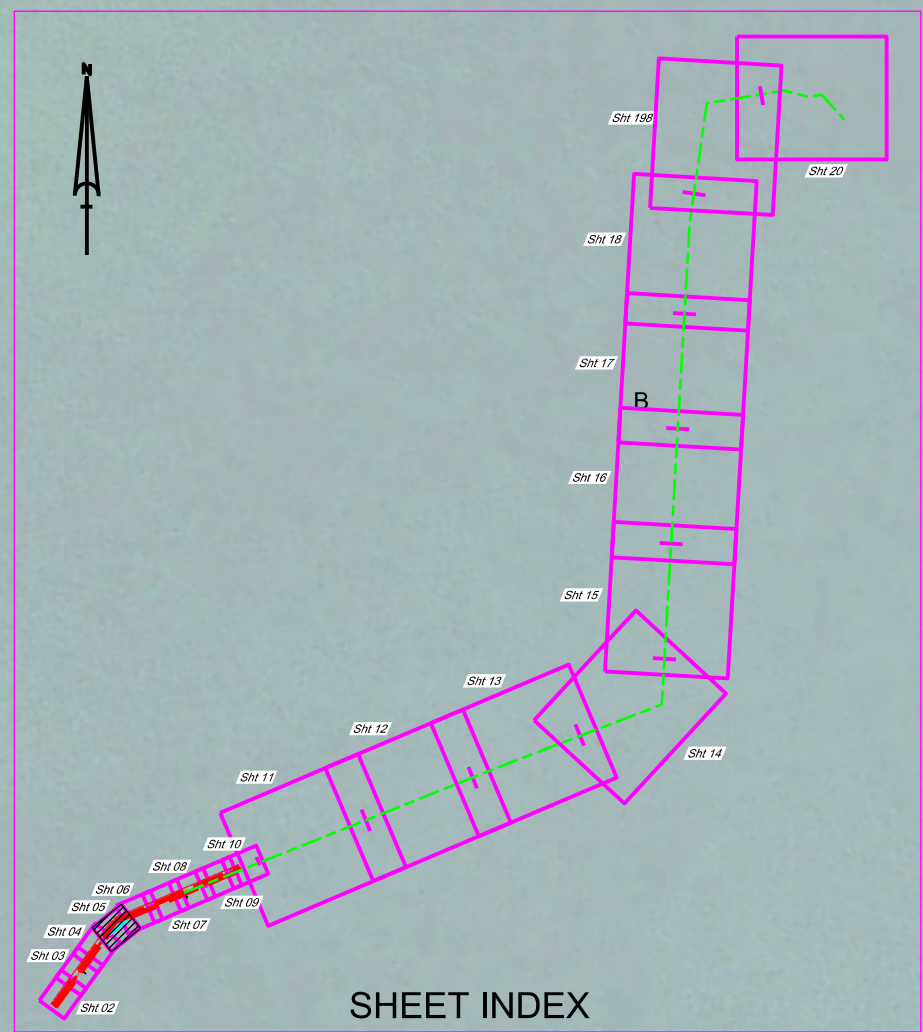
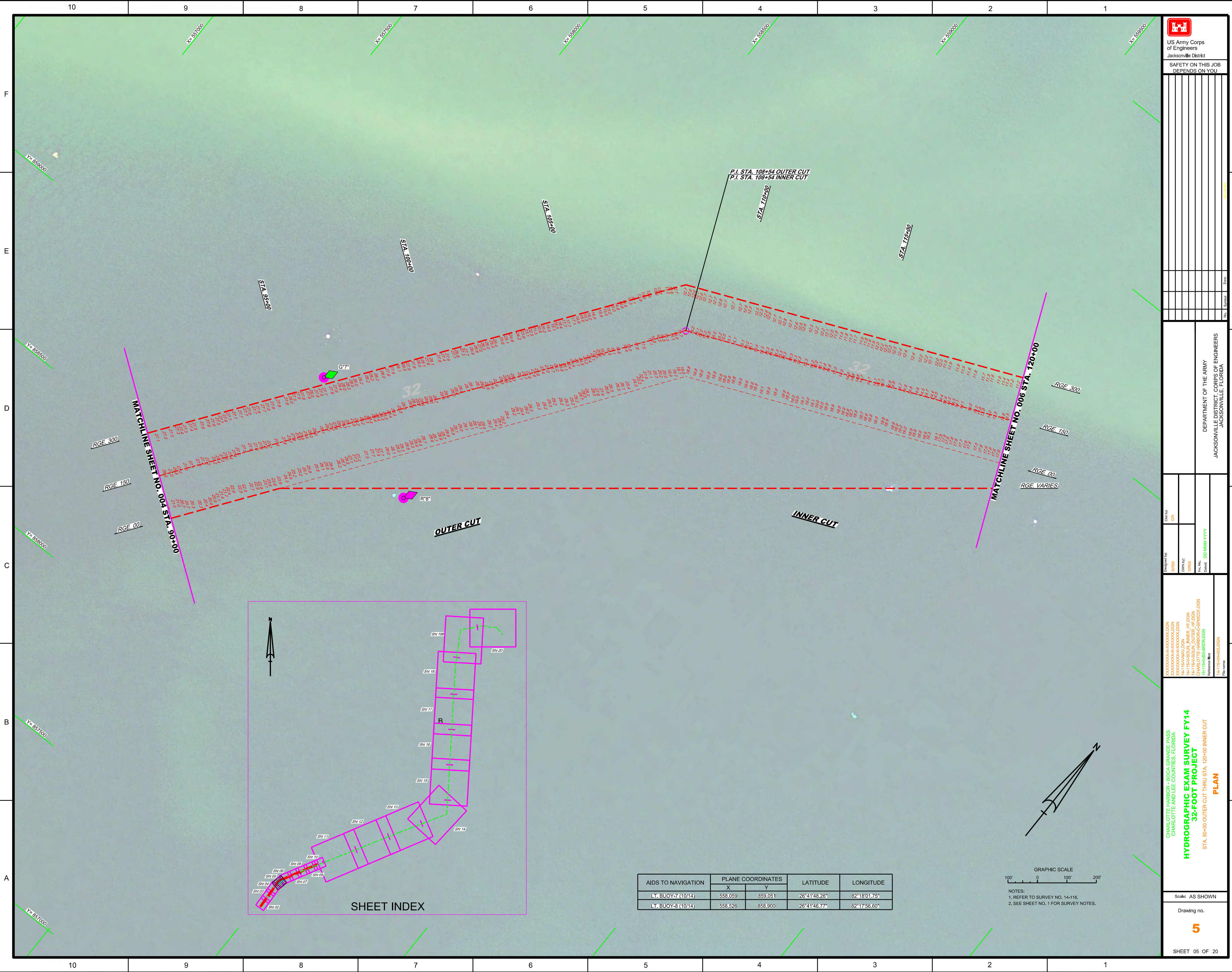
AIDS TO NAVIGATION	PLANE COORDINATES		LATITUDE	LONGITUDE
	X	Y		
LT. BUOY-5 (10/14)	555,458	855,141	26°41'09.47"	82°18'30.33"
NUN BUOY-6 (10/14)	555,803	854,848	26°41'06.58"	82°18'26.52"

DEPARTMENT OF THE ARMY
 JACKSONVILLE DISTRICT, CORPS OF ENGINEERS
 JACKSONVILLE, FLORIDA

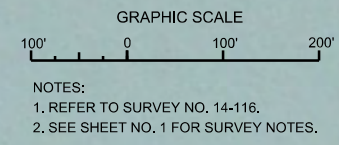
CHARLOTTE HARBOR - BOCA GRANDE PASS
 CHARLOTTE AND LEE COUNTIES, FLORIDA
HYDROGRAPHIC EXAM SURVEY FY14
32-FOOT PROJECT
 STA. 39+00 THRU STA. 60+00 OUTER CUT
PLAN


Scale: AS SHOWN
 Drawing no.
3

SHEET 03 OF 20



AIDS TO NAVIGATION	PLANE COORDINATES		LATITUDE	LONGITUDE
	X	Y		
LT. BUOY-7 (10/14)	558,059	859,051	26°41'48.26"	82°18'01.75"
LT. BUOY-3 (10/14)	558,526	858,900	26°41'46.77"	82°17'56.60"





US Army Corps
of Engineers
Jacksonville District

SAFETY ON THIS JOB
DEPENDS ON YOU

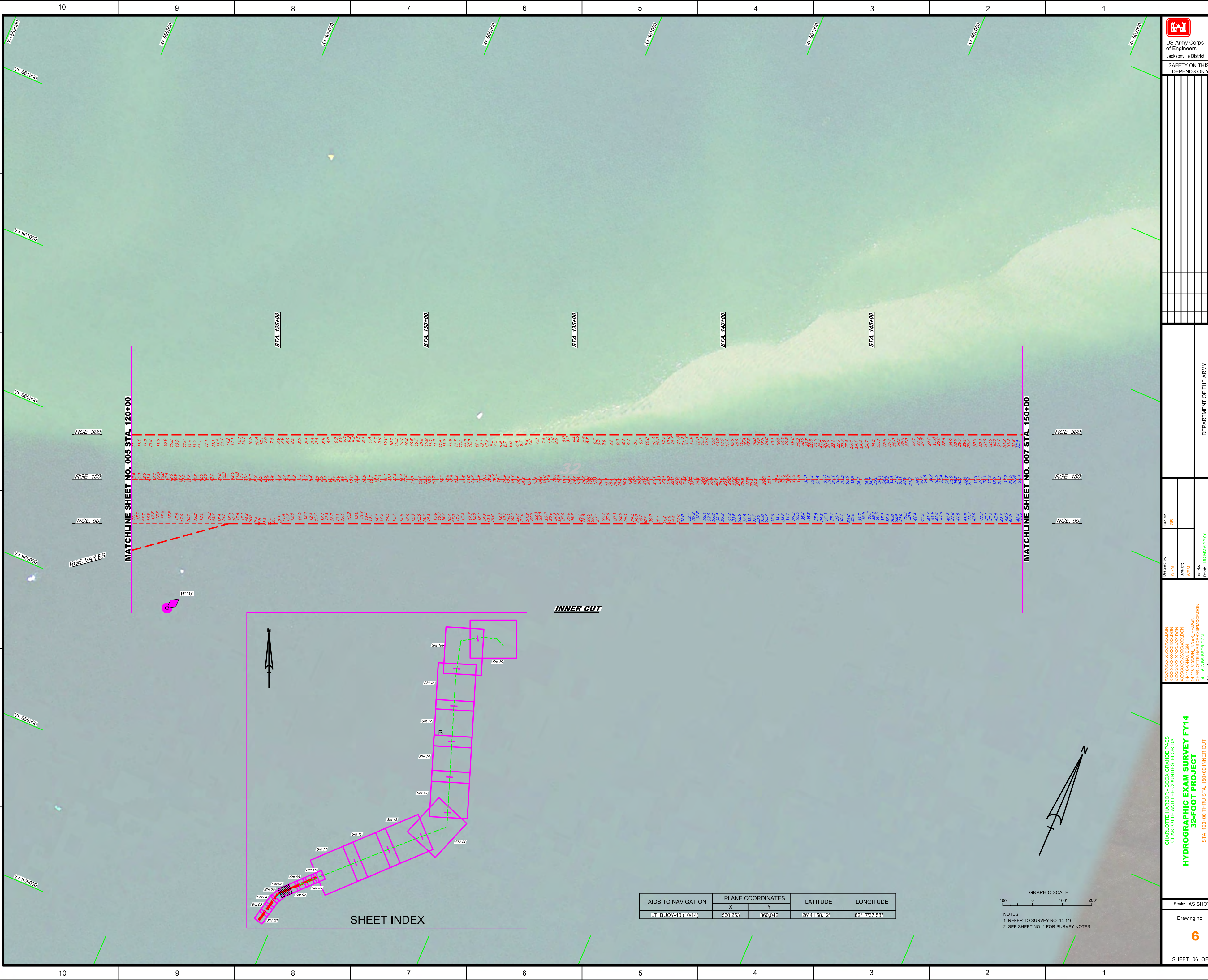
DEPARTMENT OF THE ARMY
JACKSONVILLE DISTRICT, CORPS OF ENGINEERS
JACKSONVILLE, FLORIDA

Check by: GRJ	Designed by: WRM	Drawn by: WRM	File No.: DD/AMM/VVYV	Reference files: 14-116A-HR06.DGN
------------------	---------------------	------------------	--------------------------	--------------------------------------

**CHARLOTTE HARBOR - BOCA GRANDE PASS
CHARLOTTE AND LEE COUNTIES, FLORIDA**
HYDROGRAPHIC EXAM SURVEY FY14
32-FOOT PROJECT
PLAN
 STA. 90+00 OUTER CUT THRU STA. 120+00 INNER CUT

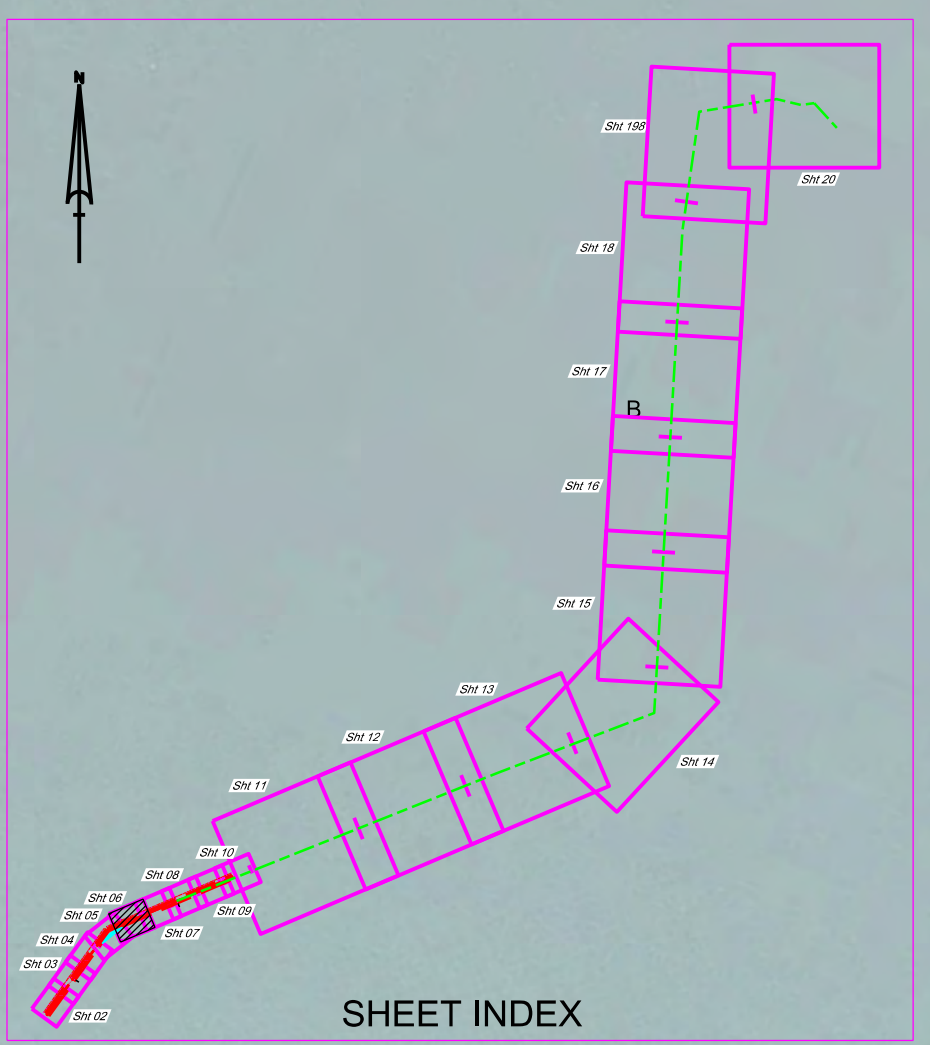
Scale: AS SHOWN	
Drawing no.	5

SHEET 05 OF 20



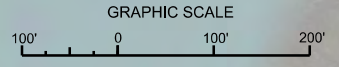
MATCHLINE SHEET NO. 005 STA. 120+00
 RGE. 300
 RGE. 150
 RGE. 00
 RGE. VARIES

MATCHLINE SHEET NO. 007 STA. 150+00
 RGE. 300
 RGE. 150
 RGE. 00

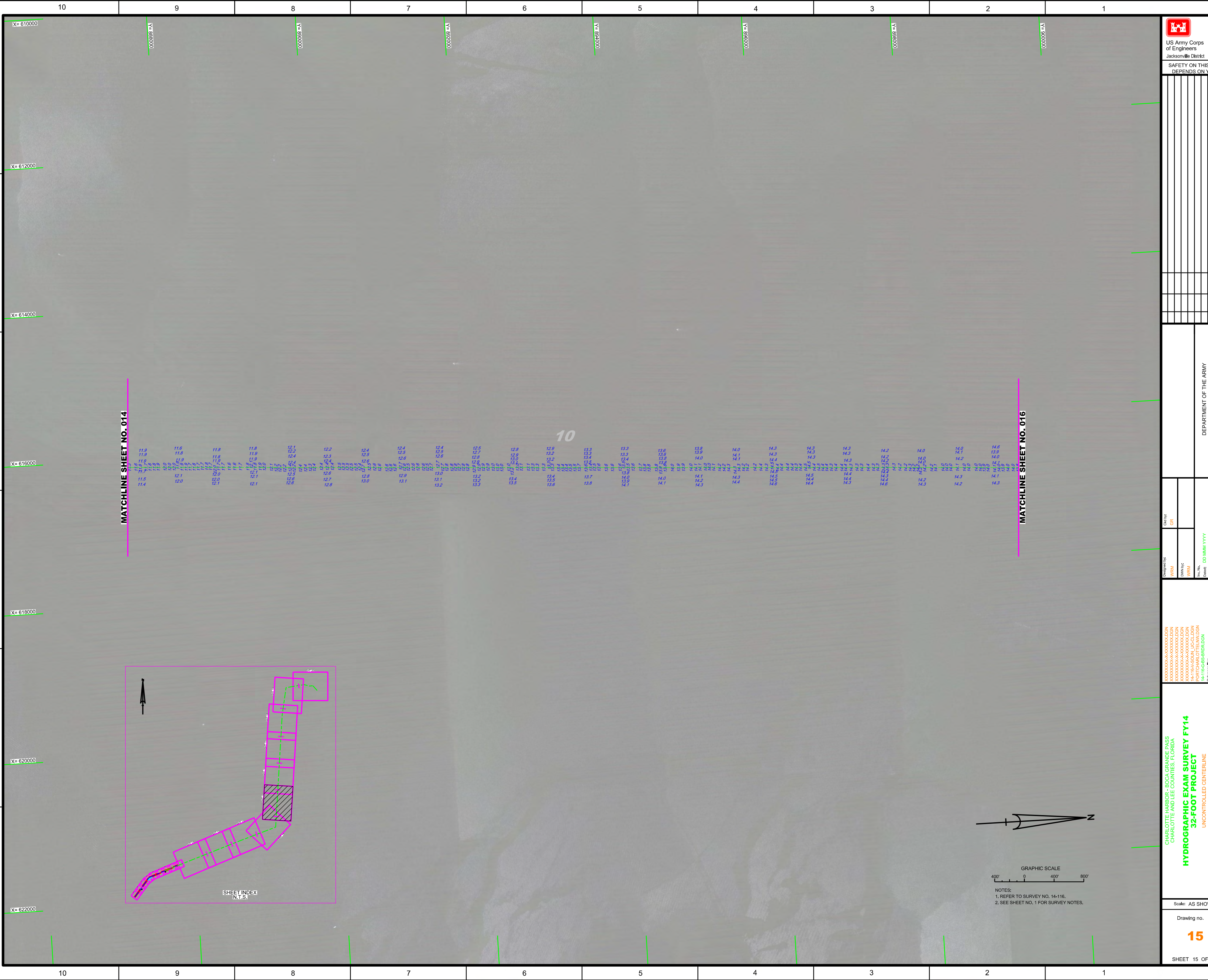


INNER CUT

AIDS TO NAVIGATION	PLANE COORDINATES		LATITUDE	LONGITUDE
	X	Y		
LT. BUOY-10 (10/14)	560,253	860,042	26°41'58.12"	82°17'37.58"



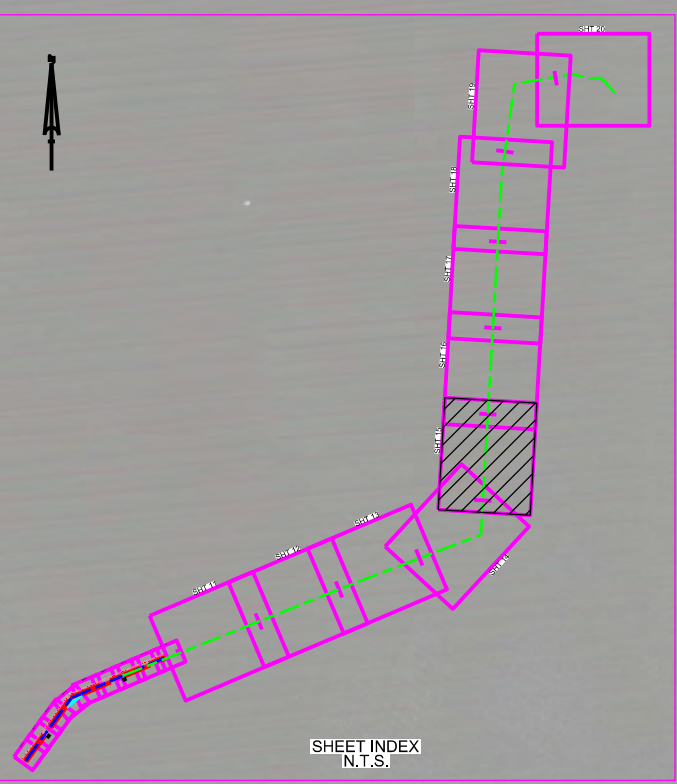
NOTES:
 1. REFER TO SURVEY NO. 14-116,
 2. SEE SHEET NO. 1 FOR SURVEY NOTES.



MATCHLINE SHEET NO. 014

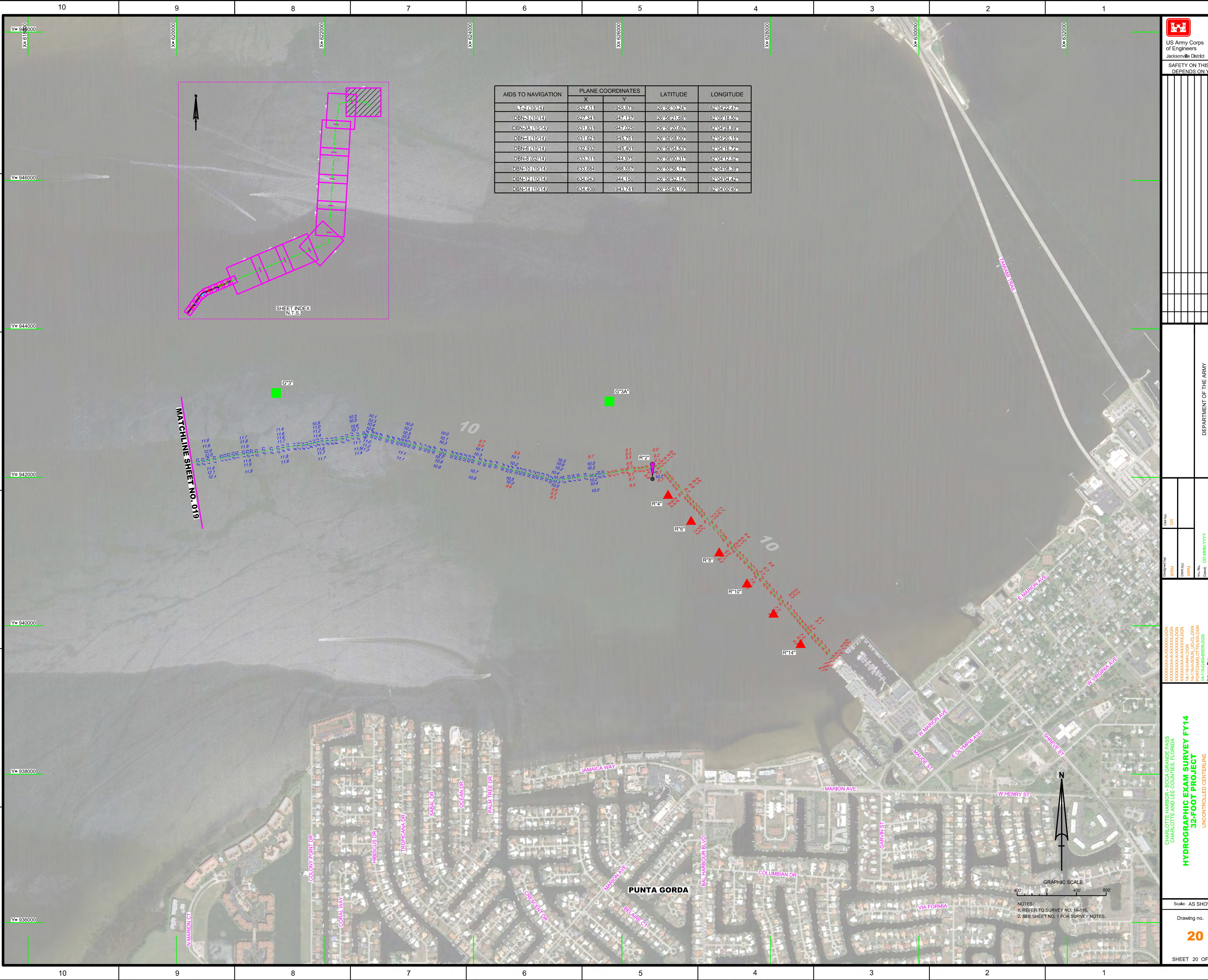
MATCHLINE SHEET NO. 016

10




NOTES:
 1. REFER TO SURVEY NO. 14-116.
 2. SEE SHEET NO. 1 FOR SURVEY NOTES.

 US Army Corps of Engineers Jacksonville District SAFETY ON THIS JOB DEPENDS ON YOU	
DEPARTMENT OF THE ARMY JACKSONVILLE DISTRICT, CORPS OF ENGINEERS JACKSONVILLE, FLORIDA	Drawn by: GR Checked: DD/MM/YYYY Date: DD/MM/YYYY
CHARLOTTE HARBOR - BOCA GRANDE PASS CHARLOTTE AND LEE COUNTIES, FLORIDA HYDROGRAPHIC EXAM SURVEY FY14 32-FOOT PROJECT UNCONTROLLED CENTERLINE PLAN	
Scale: AS SHOWN Drawing no. 15	
SHEET 15 OF 20	



AIDS TO NAVIGATION	PLANE COORDINATES		LATITUDE	LONGITUDE
	X	Y		
LT-2 (10/14)	632.411	945.979	26°56'10.24"	82°04'22.47"
DBN-3 (10/14)	627.841	947.187	26°56'21.66"	82°04'18.50"
DBN-3A (10/14)	631.881	947.025	26°56'20.60"	82°04'28.89"
DBN-4 (10/14)	631.624	945.751	26°56'08.00"	82°04'20.15"
DBN-5 (10/14)	632.932	945.401	26°56'04.53"	82°04'16.72"
DBN-8 (10/14)	633.311	944.975	26°56'00.31"	82°04'12.52"
DBN-10 (10/14)	633.684	948.557	26°55'56.17"	82°04'08.39"
DBN-12 (10/14)	634.043	944.150	26°56'52.14"	82°04'04.42"
DBN-14 (10/14)	634.408	943.741	26°55'48.10"	82°04'00.40"



US Army Corps of Engineers
Jacksonville District
SAFETY ON THIS JOB
DEPENDS ON YOU

DESIGNED BY: WRM
CHECKED BY: GRL
DATE: 00/00/00

PROJECT: CHARLOTTE HARBOR - BOCCA GRANDE PASS
CHARLOTTE AND LEE COUNTIES, FLORIDA
HYDROGRAPHIC EXAM SURVEY FY14
32-FOOT PROJECT
UNCONTROLLED CENTERLINE
PLAN

Scale: AS SHOWN
Drawing No. **20**
SHEET 20 OF 20