

VENICE INLET - CASEY'S PASS SARASOTA COUNTY, FLORIDA HYDRO PROJECT CONDITION SURVEY FY14 9-FOOT PROJECT

SURVEY NOTES

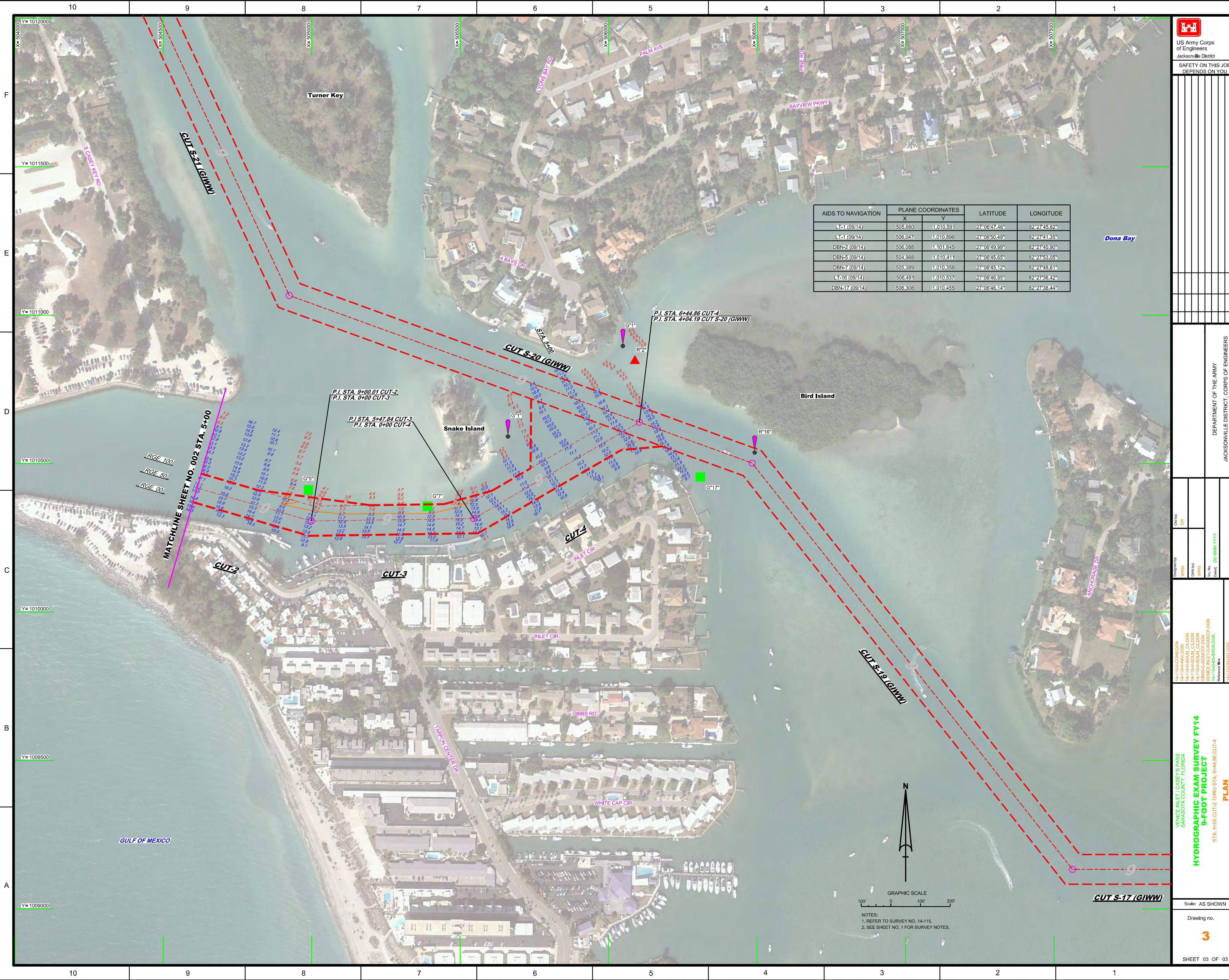
- REFER TO SURVEY NO. 14-115.
- SOUNDINGS ARE IN FEET AND TENTHS AND REFER TO NOAA'S REPORTED MEAN LOWER LOW WATER (MLLW) OF THE 1983-2001 TIDAL EPOCH.
- TIDAL REDUCTIONS WERE OBTAINED UTILIZING A REAL-TIME KINEMATIC (RTK) GPS AND REFERENCED TO MLLW UTILIZING A HYPPACK KINEMATIC TIDE DATUM (KTD) MODEL. KTD FILE NAME: "SPC-FL-WEST-2010-12-07.KTD".
- ALL ELEVATIONS ARE BELOW THE CHART DATUM UNLESS PRECEDED BY A (+) SIGN.
- PLANE COORDINATES ARE BASED ON THE TRANSVERSE MERCATOR PROJECTION FOR THE WEST ZONE OF FLORIDA AND REFERENCED TO NORTH AMERICAN DATUM OF 1983 (NAD83).
- ALL AZIMUTHS ARE GRID; RECKONED CLOCKWISE FROM SOUTH.
- ALL STATIONING REFERS TO THE CENTERLINE OF THE CHANNEL.
- THIS SURVEY WAS PERFORMED USING REAL-TIME KINEMATIC (RTK) GPS POSITIONING WITH THE FOLLOWING REFERENCE BASE LOCATION:
REFERENCE BASE LOCATED AT "VENICE RESET" (OPUS PID: AG7758)
REFERENCE BASE LOCATED AT "TVIRCBASE" (NO PID #)
- VERTICAL MEASUREMENTS WERE MADE USING AN ODOM DUAL-FREQUENCY TRANSDUCER OPERATING AT 24/200 KHZ. ALL SOUNDINGS SHOWN ARE IN HIGH FREQUENCY.
- | VESSEL | DATE OF SURVEY | CUT |
|--------|-----------------|----------|
| HYATT | 07, 10 SEP 2014 | CUTS 1-4 |
- AIDS TO NAVIGATION WERE LOCATED DURING THIS SURVEY.
- THE INFORMATION DEPICTED ON THIS MAP REPRESENTS THE RESULTS OF SURVEYS MADE ON THE DATES INDICATED ABOVE AND CAN ONLY BE CONSIDERED AS INDICATING THE GENERAL CONDITIONS AT THAT TIME. THIS CHART IS SOLELY FOR THE DISTRIBUTION OF AVAILABLE DEPTHS AT THE TIME OF THE SURVEY.
- SURVEY ACCURACY PERFORMANCE STANDARDS, QUALITY CONTROL, AND QUALITY ASSURANCE REQUIREMENTS WERE FOLLOWED DURING THIS SURVEY IN ACCORDANCE WITH USACE EM 1110-2-1003, HYDROGRAPHIC SURVEYING, 30 NOV 13.
- SURVEY PERFORMED BY HYATT SURVEY SERVICES, INC., BRADENTON, FL

LEGEND	
	MONUMENT
	LIGHTED BEACON
	GREEN DAYBEACON
	RED DAYBEACON
	RED LIGHTED BUOY
	GREEN LIGHTED BUOY
	CAN BUOY
	NUN BUOY
	TIDE STAFF
	PROJECT DEPTH

US Army Corps of Engineers
Jacksonville District

**SAFETY ON THIS JOB
DEPENDS ON YOU**

<p>DESIGNED BY: WRM CHECKED BY: WRM DATE: 00/00/00</p>	<p>DATE: 00/00/00</p>
<p>DEPARTMENT OF THE ARMY JACKSONVILLE DISTRICT, CORPS OF ENGINEERS JACKSONVILLE, FLORIDA</p>	
<p>VENICE INLET - CASEY'S PASS SARASOTA COUNTY, FLORIDA HYDROGRAPHIC EXAM SURVEY FY14 9-FOOT PROJECT INDEX, LOCATION AND VICINITY MAP</p>	
<p>Scale: AS SHOWN</p> <p>Drawing no. 1</p> <p>SHEET 01 OF 03</p>	



AIDS TO NAVIGATION	PLANE COORDINATES		LATITUDE	LONGITUDE
	X	Y		
LT-1 (09/14)	505.660	1,010.591	27°06'47.46"	82°27'45.62"
LT-1 (09/14)	506.047	1,010.896	27°06'50.49"	82°27'41.85"
DBN-2 (09/14)	506.088	1,010.845	27°06'49.99"	82°27'40.90"
DBN-5 (09/14)	504.988	1,010.411	27°06'45.65"	82°27'53.05"
DBN-7 (09/14)	505.389	1,010.356	27°06'45.12"	82°27'48.61"
LT-16 (09/14)	506.491	1,010.537	27°06'46.95"	82°27'36.42"
DBN-17 (09/14)	506.308	1,010.455	27°06'46.14"	82°27'38.44"

US Army Corps of Engineers

 Jacksonville District

 SAFETY ON THIS JOB

 DEPENDS ON YOU

DEPARTMENT OF THE ARMY

 JACKSONVILLE DISTRICT, CORPS OF ENGINEERS

 JACKSONVILLE, FLORIDA

Drawn by: GRL

 Checked by: GRL

 Date: 02/01/14

14-115A-0000.DGN

 14-115A-0001.DGN

 14-115A-0002.DGN

 14-115A-0003.DGN

 14-115A-0004.DGN

 14-115A-0005.DGN

 14-115A-0006.DGN

 14-115A-0007.DGN

 14-115A-0008.DGN

 14-115A-0009.DGN

 14-115A-0010.DGN

 14-115A-0011.DGN

 14-115A-0012.DGN

 14-115A-0013.DGN

 14-115A-0014.DGN

 14-115A-0015.DGN

 14-115A-0016.DGN

 14-115A-0017.DGN

 14-115A-0018.DGN

 14-115A-0019.DGN

 14-115A-0020.DGN

VENICE INLET / CASEY'S PASS

 SARASOTA COUNTY, FLORIDA

HYDROGRAPHIC EXAM SURVEY FY14

9-FOOT PROJECT

 STA. 5+00 CUT-2 THRU STA. 6+44.86 CUT-4

PLAN

Scale: AS SHOWN

 Drawing no.

3

 SHEET 03 OF 03

