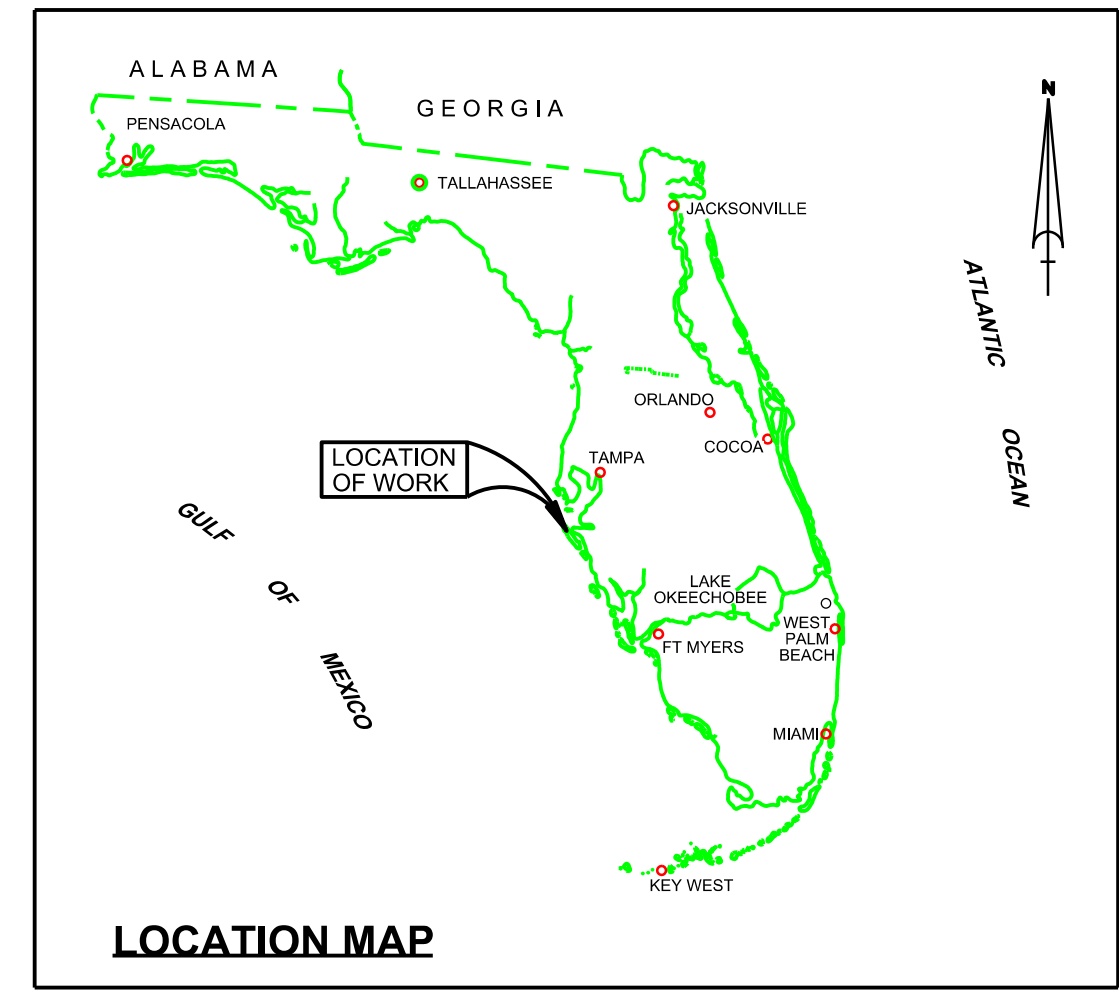


LEGEND	
	MONUMENT
	LIGHTED BEACON
	GREEN DAYBEACON
	RED DAYBEACON
	RED LIGHTED BUOY
	GREEN LIGHTED BUOY
	CAN BUOY
	NUN BUOY
	TIDE STAFF
8	PROJECT DEPTH



LONGBOAT PASS MANATEE COUNTY, FLORIDA EXAMINATION SURVEY FY14 10 AND 12-FOOT PROJECT

SURVEY NOTES

- REFER TO SURVEY NO. 14-114.
- SOUNDINGS ARE IN FEET AND TENTHS AND REFER TO NOAA'S REPORTED MEAN LOWER LOW WATER (MLLW) OF THE 1983-2001 TIDAL EPOCH.
- TIDAL REDUCTIONS WERE OBTAINED UTILIZING A REAL-TIME KINEMATIC (RTK) GPS AND REFERENCED TO MLLW UTILIZING A HYPACK KINEMATIC TIDE DATUM (KTD) MODEL. KTD FILE NAME IS: "SPC-FL-WEST-2010-12-07.KTD".
- ALL ELEVATIONS ARE BELOW THE CHART DATUM UNLESS PRECEDED BY A (+) SIGN.
- PLANE COORDINATES ARE BASED ON THE TRANSVERSE MERCATOR PROJECTION FOR THE WEST ZONE OF FLORIDA AND REFERENCED TO NORTH AMERICAN DATUM OF 1983 (NAD83).
- ALL AZIMUTHS ARE GRID; RECKONED CLOCKWISE FROM SOUTH.
- ALL STATIONING REFERS TO THE CENTERLINE OF THE CHANNEL.
- THIS SURVEY WAS PERFORMED USING REAL-TIME KINEMATIC (RTK) GPS POSITIONING WITH THE FOLLOWING REFERENCE BAS LOCATION:
REFERENCE BASE LOCATED AT "GIS106" (PID: AG9211)
VERTICAL MEASUREMENTS WERE MADE USING AN ODOM DUAL-FREQUENCY (24/200 KHZ) TRANSDUCER WITH AN ODOM CVM FATHOMETER AIDED WITH A TSS DMS-25 MOTION COMPENSATOR. ALL SOUNDINGS SHOWN ARE IN HIGH FREQUENCY.
- VESEL: PARKER DATE OF SURVEY: 03-09 SEP 2014 CUT: CUTS 1-3
- AIDS TO NAVIGATION WERE LOCATED DURING THIS SURVEY.
- THE INFORMATION DEPICTED ON THIS MAP REPRESENTS THE RESULTS OF SURVEYS MADE ON THE DATES INDICATED ABOVE AND CAN ONLY BE CONSIDERED AS INDICATING THE GENERAL CONDITIONS AT THAT TIME. THIS CHART IS SOLELY FOR THE DISTRIBUTION OF AVAILABLE DEPTHS AT THE TIME OF THE SURVEY.
- SURVEY ACCURACY PERFORMANCE STANDARDS, QUALITY CONTROL, AND QUALITY ASSURANCE REQUIREMENTS WERE FOLLOWED DURING THIS SURVEY IN ACCORDANCE WITH USACE EM 1110-2-1003, HYDROGRAPHIC SURVEYING, 30 NOV 13.
- DATA COLLECTED BY HYATT SURVEY SERVICES, INC., BRADENTON, FL

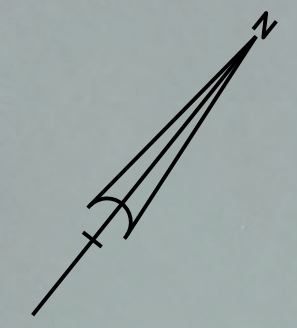
US Army Corps of Engineers
Jacksonville District
SAFETY ON THIS JOB DEPENDS ON YOU

Checked by: GRL	Designed by: WRM	Drawn by: WRM	File No: 14-114-ES-BR14LGN	Reference Base: 14-114-ES-BR14LGN
Checked by: GRL	Designed by: WRM	Drawn by: WRM	File No: 14-114-ES-BR14LGN	Reference Base: 14-114-ES-BR14LGN

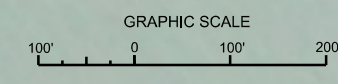
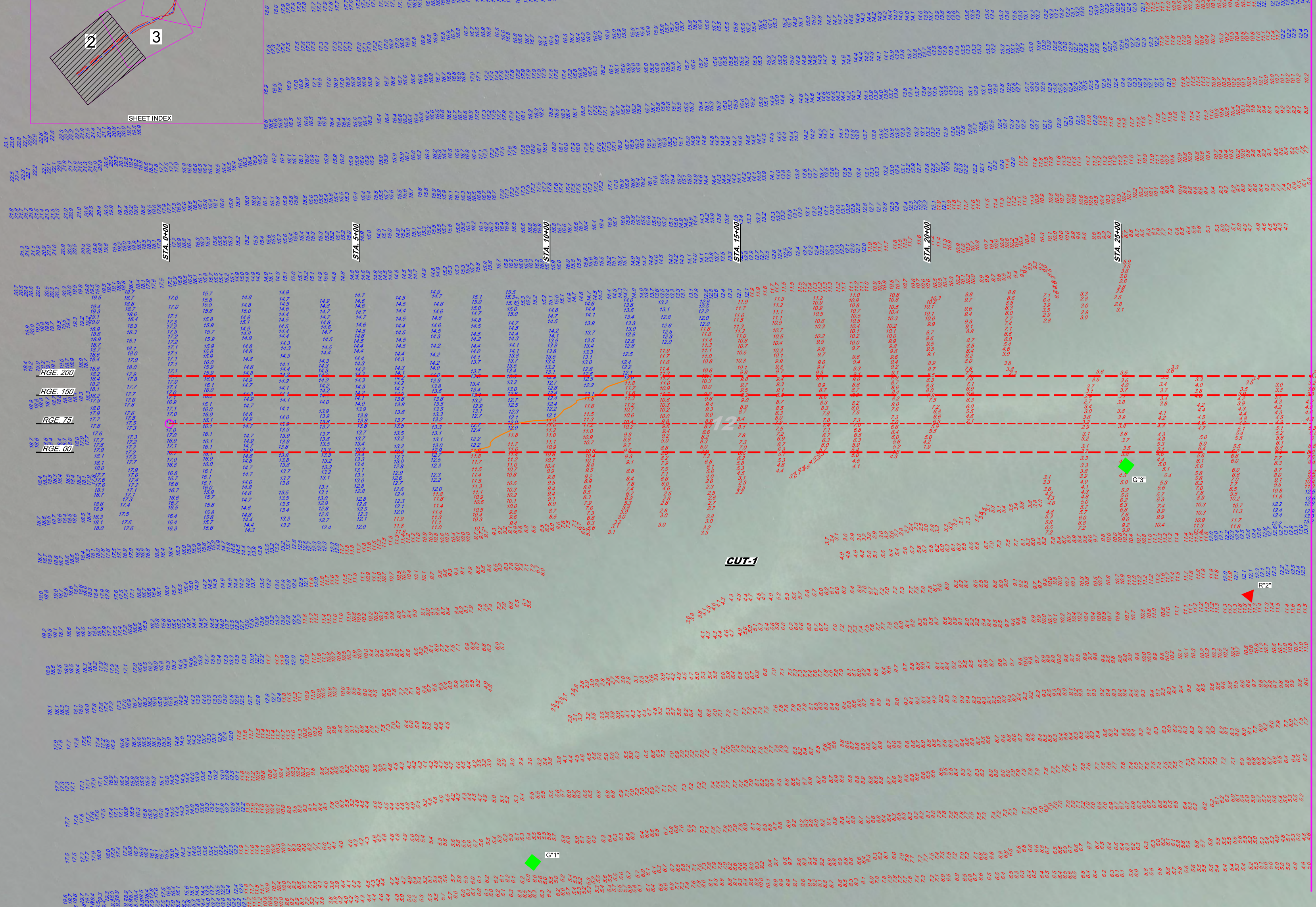
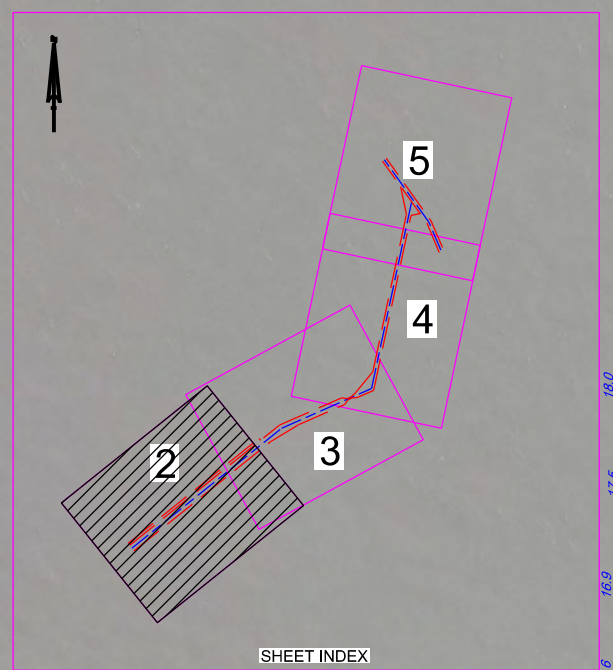
DEPARTMENT OF THE ARMY
JACKSONVILLE DISTRICT, CORPS OF ENGINEERS
JACKSONVILLE, FLORIDA

LONGBOAT PASS
MANATEE COUNTY, FLORIDA
**HYDROGRAPHIC EXAM SURVEY FY14
10 AND 12-FOOT PROJECT**
INDEX, LOCATION AND VICINITY
MAP

Scale: AS SHOWN
Drawing no. **1**
SHEET 01 OF 05



AIDS TO NAVIGATION	PLANE COORDINATES		LATITUDE	LONGITUDE
	X	Y		
DBN#1 (09/14)	429,562	11127,852	27°26'05.17"	82°41'50.56"
DBN#2 (09/14)	430,991	11129,576	27°26'22.23"	82°41'39.24"
DBN#3 (09/14)	430,526	11129,640	27°26'22.50"	82°41'40.76"



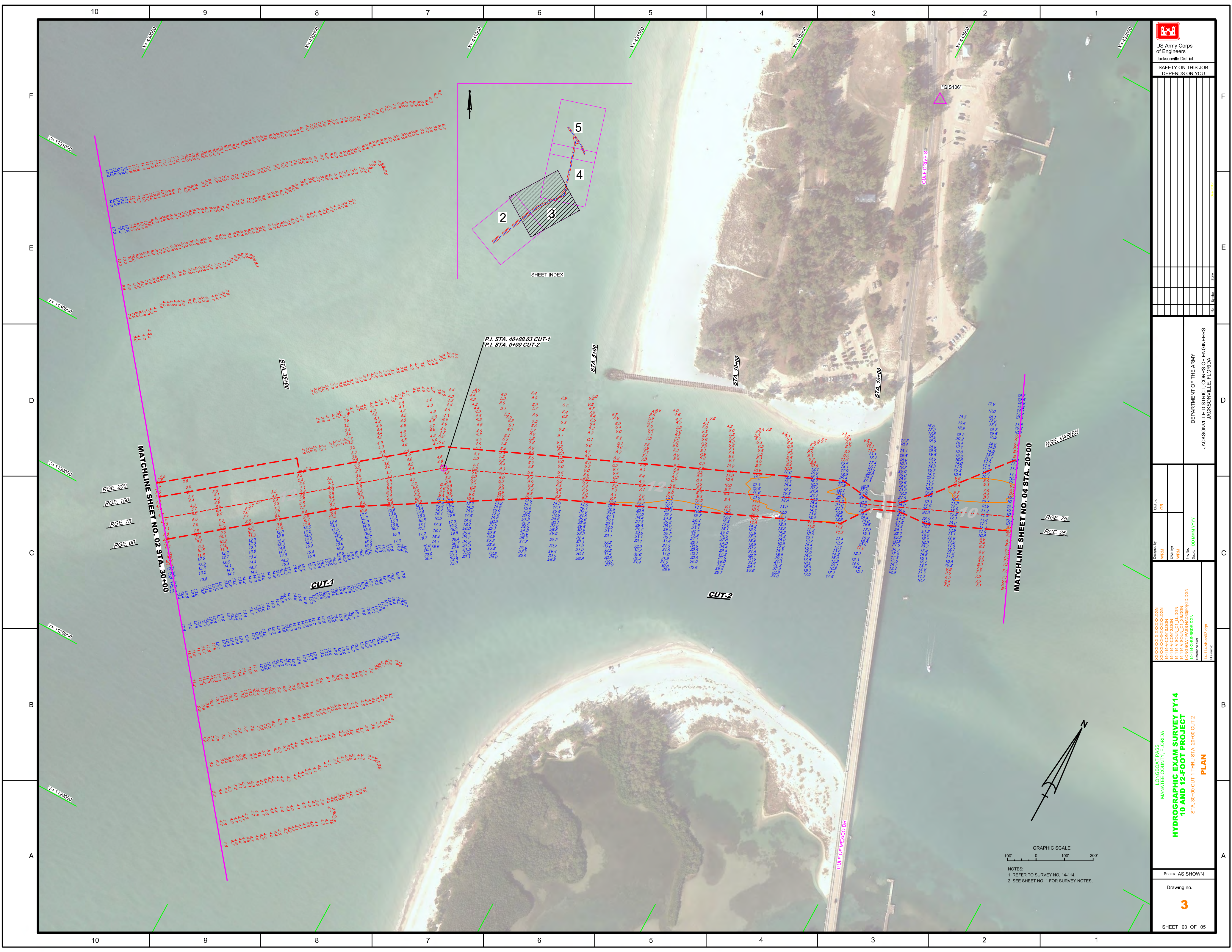
NOTES:
1. REFER TO SURVEY NO. 14-114.
2. SEE SHEET NO. 1 FOR SURVEY NOTES.


DEPARTMENT OF THE ARMY
JACKSONVILLE DISTRICT, CORPS OF ENGINEERS
JACKSONVILLE, FLORIDA

XXXXXXXXXXXXXXXXXXXX
XXXXXXXXXXXXXXXXXXXX
XXXXXXXXXXXXXXXXXXXX
H4-14A-CON12.DGN
H4-14A-SOIL_CO_L1.DGN
LONGBOAT PASS NAD83R02.DGN
H4-14A-BR-BRD1.DGN
Reference files
H4-14A-HS-02.DGN
File name

LONGBOAT PASS
MANATEE COUNTY, FLORIDA
**HYDROGRAPHIC EXAM SURVEY FY14
10 AND 12-FOOT PROJECT**
STA. 0+00 THRU STA. 30+00 CUT-1
PLAN

Scale: AS SHOWN
Drawing no. **2**
SHEET 02 OF 05



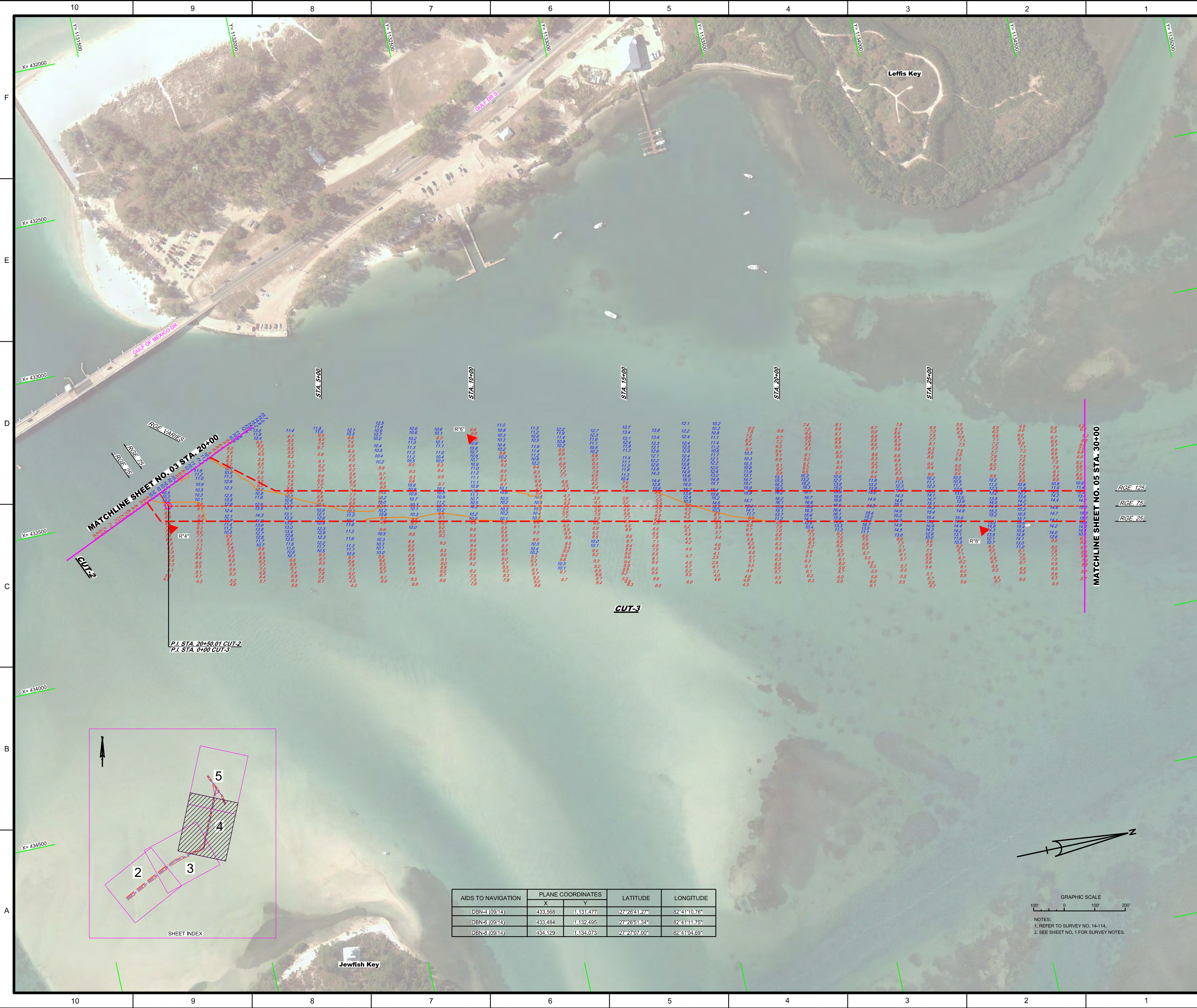

 US Army Corps of Engineers
 Jacksonville District
 SAFETY ON THIS JOB
 DEPENDS ON YOU

DEPARTMENT OF THE ARMY
 JACKSONVILLE DISTRICT, CORPS OF ENGINEERS
 JACKSONVILLE, FLORIDA

Call by: GRL
 Designed by: WRM
 Drawn by: WRM
 Checked by: WRM
 Date: 01/11/14
 File name: 14-114-003.dgn
 Reference files: 14-114-003.dgn

LONGBOAT PASS
 MANATEE COUNTY, FLORIDA
**HYDROGRAPHIC EXAM SURVEY FY14
 10 AND 12-FOOT PROJECT**
 STA. 30+00 CUT-1 THRU STA. 20+00 CUT-2
PLAN
 Scale: AS SHOWN
 Drawing no. **3**
 SHEET 03 OF 05

GRAPHIC SCALE
 100' 0 100' 200'
 NOTES:
 1. REFER TO SURVEY NO. 14-114.
 2. SEE SHEET NO. 1 FOR SURVEY NOTES.



AIDS TO NAVIGATION	PLANE COORDINATES		LATITUDE	LONGITUDE
	X	Y		
DBN-4 (09/14)	433,568	11,314,477	27°28'41.27"	82°41'10.76"
DBN-5 (09/14)	433,484	11,324,495	27°28'51.34"	82°41'11.75"
DBN-9 (09/14)	434,129	11,344,073	27°27'07.00"	82°41'04.69"

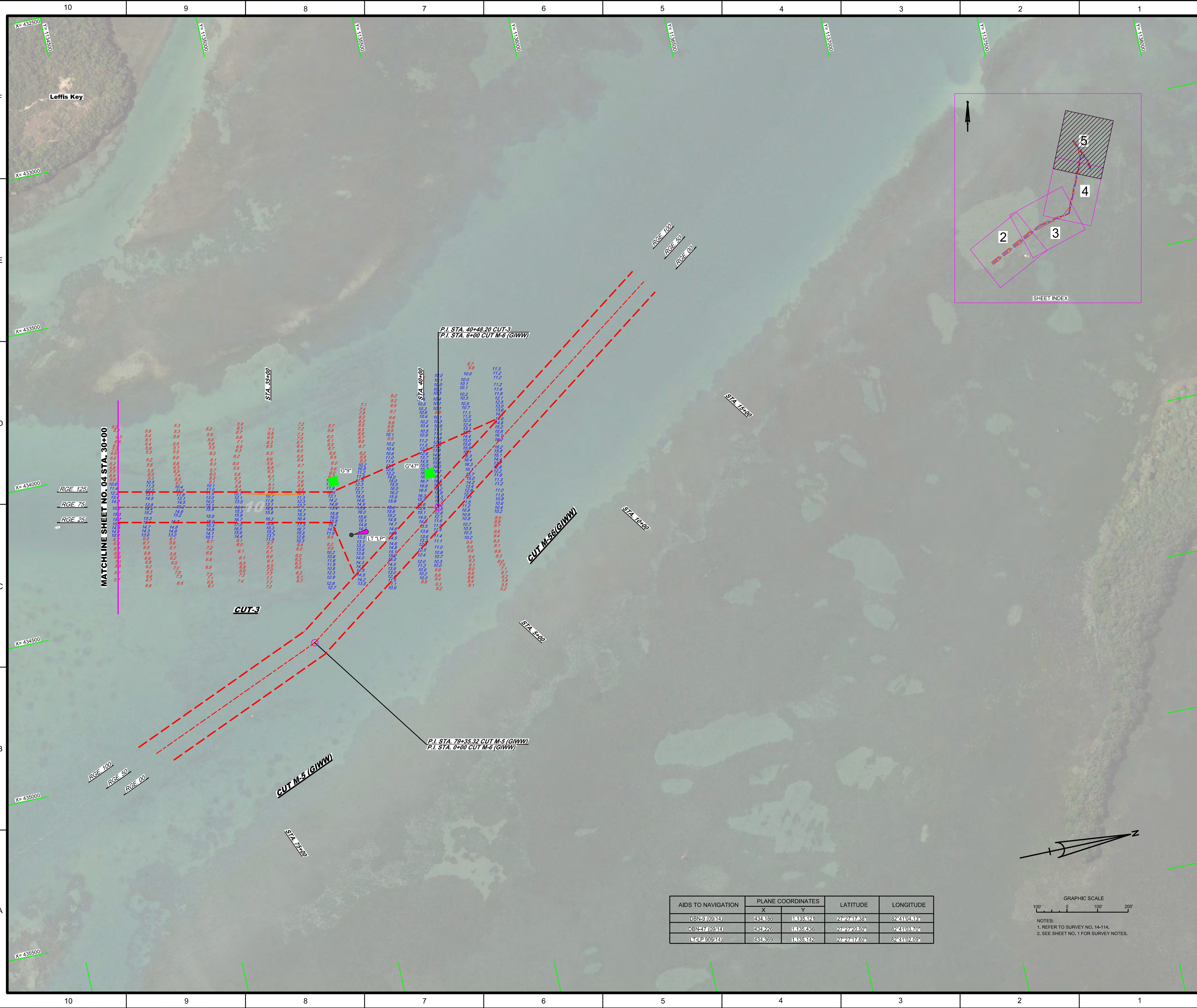
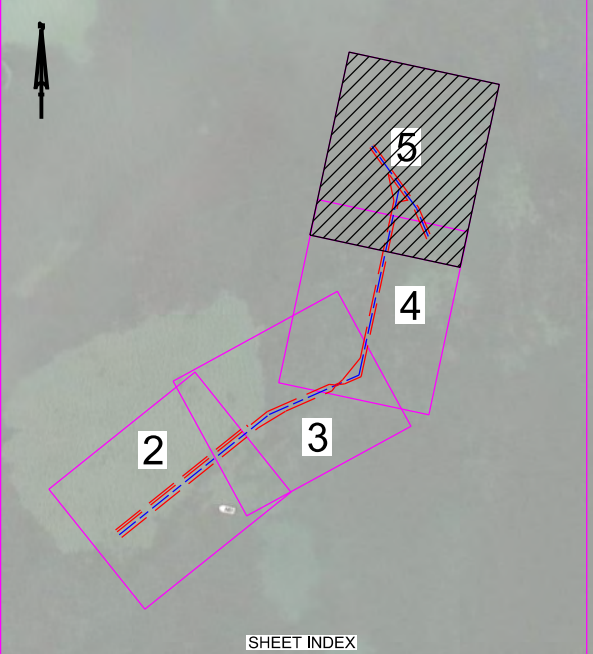
GRAPHIC SCALE

 1" = 200'

 NOTES:

 1. REFER TO SURVEY NO. 14-114.

 2. SEE SHEET NO. 1 FOR SURVEY NOTES.



10 9 8 7 6 5 4 3 2 1
 F
 E
 D
 C
 B
 A

AIDS TO NAVIGATION	PLANE COORDINATES		LATITUDE	LONGITUDE
	X	Y		
DBN-9 (09/14)	434,186	1135,121	27°27'47.88"	82°41'04.43"
DBN-17 (09/14)	434,226	1135,436	27°27'20.50"	82°41'03.70"
T.L.P. 909/14	434,369	1135,142	27°27'47.60"	82°41'02.09"

GRAPHIC SCALE
 100' 0 100' 200'
 NOTES:
 1. REFER TO SURVEY NO. 14-114.
 2. SEE SHEET NO. 1 FOR SURVEY NOTES.