

JOHNS PASS PINELLAS COUNTY, FLORIDA EXAMINATION SURVEY FY14 6, 8 AND 10-FOOT PROJECT

LEGEND	
	MONUMENT
	LIGHTED BEACON
	GREEN DAYBEACON
	RED DAYBEACON
	RED LIGHTED BUOY
	GREEN LIGHTED BUOY
	CAN BUOY
	NUN BUOY
	TIDE STAFF
	PROJECT DEPTH

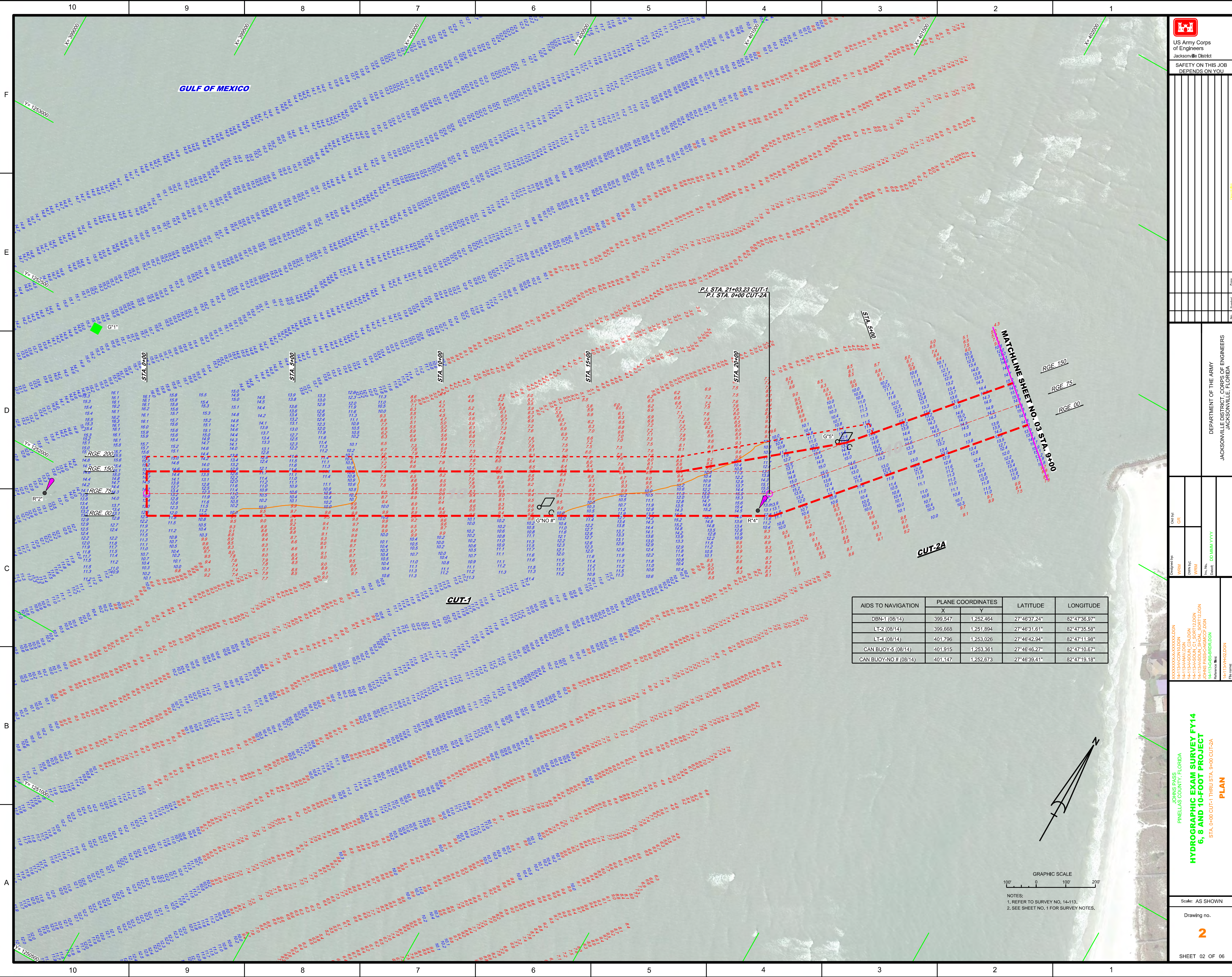
- SURVEY NOTES**
- REFER TO SURVEY NO. 14-113.
 - SOUNDINGS ARE IN FEET AND TENTHS AND REFER TO NOAA'S REPORTED MEAN LOWER LOW WATER (MLLW) OF THE 1983-2001 TIDAL EPOCH.
 - TIDAL REDUCTIONS WERE OBTAINED UTILIZING A REAL-TIME KINEMATIC (RTK) GPS AND REFERENCED TO MLLW UTILIZING A HYPACK KINEMATIC TIDE DATUM (KTD) MODEL. KTD FILE NAME: "SPC-FL-WEST-2010-12-07.KTD".
 - ALL ELEVATIONS ARE BELOW THE CHART DATUM UNLESS PRECEDED BY A (*) SIGN.
 - PLANE COORDINATES ARE BASED ON THE TRANSVERSE MERCATOR PROJECTION FOR THE WEST ZONE OF FLORIDA AND REFERENCED TO NORTH AMERICAN DATUM OF 1983 (NAD83).
 - ALL AZIMUTHS ARE GRID; RECKONED CLOCKWISE FROM SOUTH.
 - ALL STATIONING REFERS TO THE CENTERLINE OF THE CHANNEL.
 - THIS SURVEY WAS PERFORMED USING REAL-TIME KINEMATIC (RTK) GPS POSITIONING WITH THE FOLLOWING REFERENCE BASE LOCATION:
REFERENCE BASE LOCATED AT "TURTLE2H" (OPUS PID: AG1015)
 - VERTICAL MEASUREMENTS WERE MADE USING AN ODOM DUAL-FREQUENCY TRANSDUCER OPERATING AT 24/200 KHZ. ALL SOUNDINGS SHOWN ARE IN HIGH FREQUENCY.
 - AIDS TO NAVIGATION WERE LOCATED DURING THIS SURVEY.
 - THE INFORMATION DEPICTED ON THIS MAP REPRESENTS THE RESULTS OF SURVEYS MADE ON THE DATES INDICATED ABOVE AND CAN ONLY BE CONSIDERED AS INDICATING THE GENERAL CONDITIONS AT THAT TIME. THIS CHART IS SOLELY FOR THE DISTRIBUTION OF AVAILABLE DEPTHS AT THE TIME OF THE SURVEY AND IS NOT TO BE USED FOR NAVIGATION.
 - SURVEY ACCURACY PERFORMANCE STANDARDS, QUALITY CONTROL, AND QUALITY ASSURANCE REQUIREMENTS WERE FOLLOWED DURING THIS SURVEY IN ACCORDANCE WITH USACE EM 1110-2-1003, HYDROGRAPHIC SURVEYING, 30 NOV 13.
 - SURVEY PERFORMED BY HYATT SURVEY SERVICES, INC., BRADENTON, FL
- | VESSEL | DATE OF SURVEY | CUT |
|--------|----------------|--------------------------------|
| HYATT | 26-29 AUG 2014 | CUTS 1, 2A, 2C, 3-7, EBB SHOAL |

US Army Corps of Engineers
Jacksonville District
SAFETY ON THIS JOB
DEPENDS ON YOU

DEPARTMENT OF THE ARMY
JACKSONVILLE DISTRICT, CORPS OF ENGINEERS
JACKSONVILLE, FLORIDA

JOHNS PASS, PINELLAS COUNTY, FLORIDA
**HYDROGRAPHIC EXAM SURVEY FY14
6, 8 AND 10-FOOT PROJECT**
INDEX, LOCATION AND VICINITY
MAP

Scale: AS SHOWN
Drawing no. **1**
SHEET 01 OF 06



AIDS TO NAVIGATION	PLANE COORDINATES		LATITUDE	LONGITUDE
	X	Y		
DBN-1 (08/14)	399,547	1,252,464	27°46'37.24"	82°47'36.97"
LT-2 (08/14)	399,668	1,251,894	27°46'31.61"	82°47'35.58"
LT-4 (08/14)	401,796	1,253,026	27°46'42.94"	82°47'11.98"
CAN BUOY-5 (08/14)	401,915	1,253,361	27°46'46.27"	82°47'10.67"
CAN BUOY-NO # (08/14)	401,147	1,252,673	27°46'39.41"	82°47'19.18"

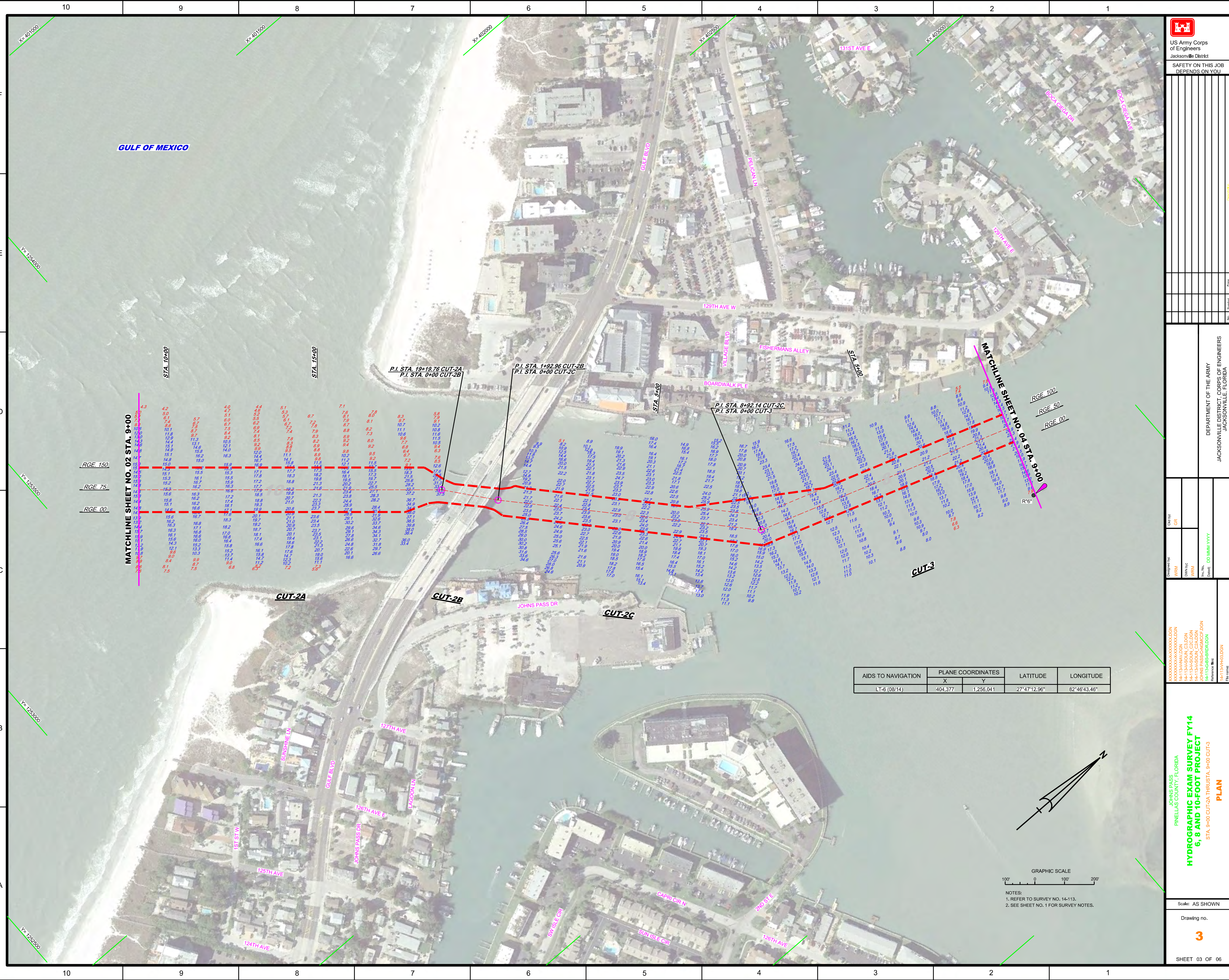
GRAPHIC SCALE
100' 0 100' 200'

NOTES:
1. REFER TO SURVEY NO. 14-113.
2. SEE SHEET NO. 1 FOR SURVEY NOTES.

DEPARTMENT OF THE ARMY
JACKSONVILLE DISTRICT, CORPS OF ENGINEERS
JACKSONVILLE, FLORIDA

Drawn by: GRL
Checked by: GRL
Designed by: WRM
Checked by: WRM
Scale: AS SHOWN
Drawing No. 2
SHEET 02 OF 06

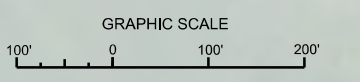
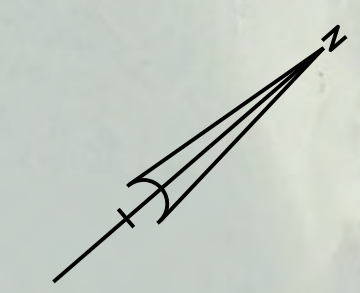
JOHNS PASS
PINELAS COUNTY, FLORIDA
**HYDROGRAPHIC EXAM SURVEY FY14
6, 8 AND 10-FOOT PROJECT**
STA. 0+00 CUT-1 THRU STA. 9+00 CUT-2A
PLAN



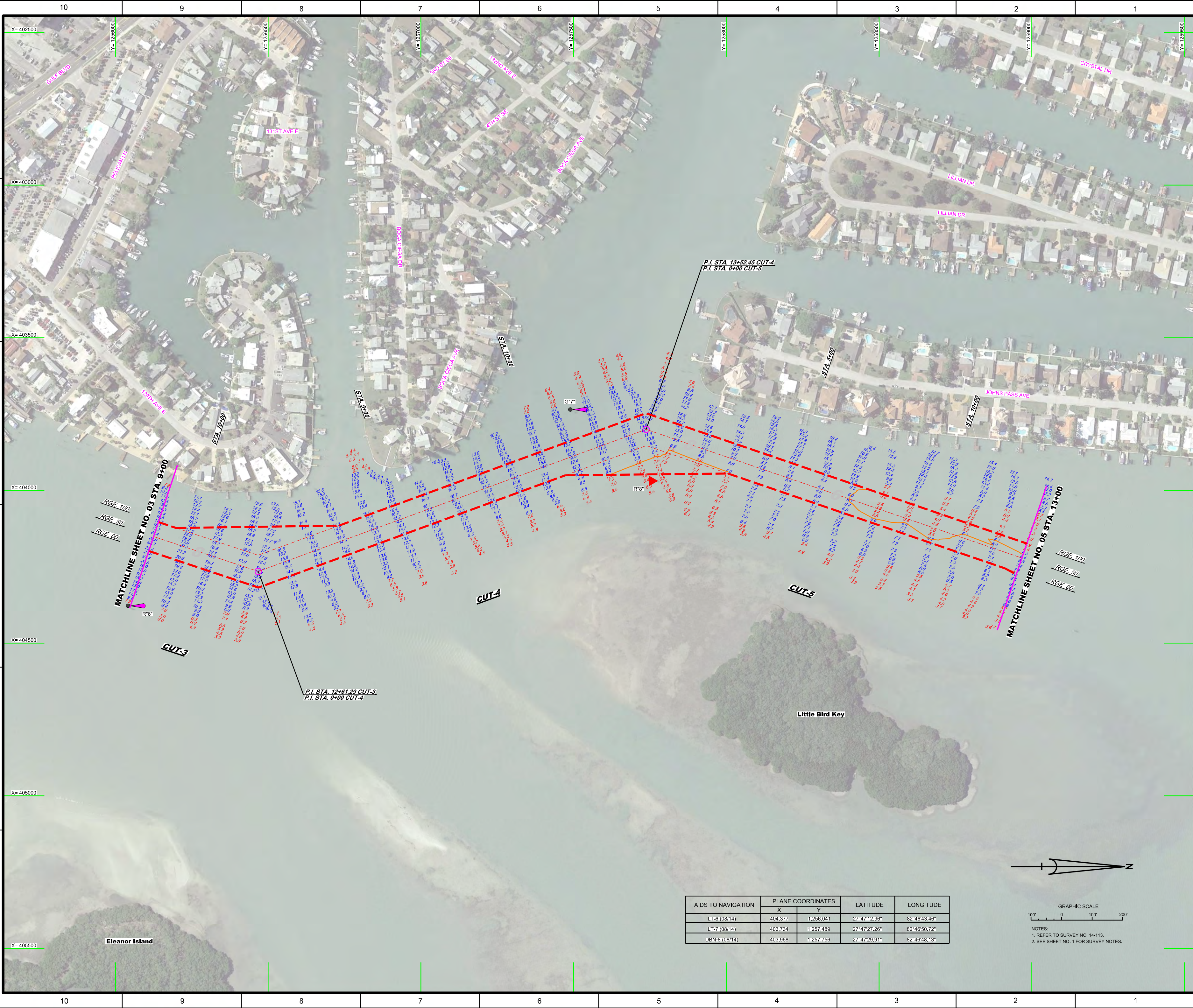
MATCHLINE SHEET NO. 02 STA. 9+00


14.3	4.3	4.0	4.4	5.1	7.1	7.8	8.0	8.3	5.9
14.4	5.0	4.7	5.1	5.7	6.1	6.1	6.2	6.7	6.7
14.5	7.4	6.0	6.7	7.4	7.9	8.2	8.2	8.7	8.7
14.6	8.6	6.7	7.4	8.2	8.2	8.2	8.2	8.7	8.7
14.7	10.1	8.7	9.4	9.2	9.3	9.2	9.2	9.6	9.6
14.8	11.8	10.1	10.5	10.2	10.5	10.2	10.2	10.5	10.5
14.9	13.0	11.9	12.1	12.1	12.1	12.1	12.1	12.1	12.1
15.0	14.4	14.6	14.6	14.6	14.4	14.4	14.4	14.4	14.4
15.1	15.1	15.8	16.2	16.3	16.3	16.3	16.3	16.3	16.3
15.2	16.3	16.6	16.6	16.6	16.6	16.6	16.6	16.6	16.6
15.3	16.6	16.6	16.6	16.6	16.6	16.6	16.6	16.6	16.6
15.4	16.6	16.6	16.6	16.6	16.6	16.6	16.6	16.6	16.6
15.5	16.6	16.6	16.6	16.6	16.6	16.6	16.6	16.6	16.6
15.6	16.6	16.6	16.6	16.6	16.6	16.6	16.6	16.6	16.6
15.7	16.6	16.6	16.6	16.6	16.6	16.6	16.6	16.6	16.6
15.8	16.6	16.6	16.6	16.6	16.6	16.6	16.6	16.6	16.6
15.9	16.6	16.6	16.6	16.6	16.6	16.6	16.6	16.6	16.6
16.0	16.6	16.6	16.6	16.6	16.6	16.6	16.6	16.6	16.6
16.1	16.6	16.6	16.6	16.6	16.6	16.6	16.6	16.6	16.6
16.2	16.6	16.6	16.6	16.6	16.6	16.6	16.6	16.6	16.6
16.3	16.6	16.6	16.6	16.6	16.6	16.6	16.6	16.6	16.6
16.4	16.6	16.6	16.6	16.6	16.6	16.6	16.6	16.6	16.6
16.5	16.6	16.6	16.6	16.6	16.6	16.6	16.6	16.6	16.6
16.6	16.6	16.6	16.6	16.6	16.6	16.6	16.6	16.6	16.6
16.7	16.6	16.6	16.6	16.6	16.6	16.6	16.6	16.6	16.6
16.8	16.6	16.6	16.6	16.6	16.6	16.6	16.6	16.6	16.6
16.9	16.6	16.6	16.6	16.6	16.6	16.6	16.6	16.6	16.6
17.0	16.6	16.6	16.6	16.6	16.6	16.6	16.6	16.6	16.6
17.1	16.6	16.6	16.6	16.6	16.6	16.6	16.6	16.6	16.6
17.2	16.6	16.6	16.6	16.6	16.6	16.6	16.6	16.6	16.6
17.3	16.6	16.6	16.6	16.6	16.6	16.6	16.6	16.6	16.6
17.4	16.6	16.6	16.6	16.6	16.6	16.6	16.6	16.6	16.6
17.5	16.6	16.6	16.6	16.6	16.6	16.6	16.6	16.6	16.6
17.6	16.6	16.6	16.6	16.6	16.6	16.6	16.6	16.6	16.6
17.7	16.6	16.6	16.6	16.6	16.6	16.6	16.6	16.6	16.6
17.8	16.6	16.6	16.6	16.6	16.6	16.6	16.6	16.6	16.6
17.9	16.6	16.6	16.6	16.6	16.6	16.6	16.6	16.6	16.6
18.0	16.6	16.6	16.6	16.6	16.6	16.6	16.6	16.6	16.6
18.1	16.6	16.6	16.6	16.6	16.6	16.6	16.6	16.6	16.6
18.2	16.6	16.6	16.6	16.6	16.6	16.6	16.6	16.6	16.6
18.3	16.6	16.6	16.6	16.6	16.6	16.6	16.6	16.6	16.6
18.4	16.6	16.6	16.6	16.6	16.6	16.6	16.6	16.6	16.6
18.5	16.6	16.6	16.6	16.6	16.6	16.6	16.6	16.6	16.6
18.6	16.6	16.6	16.6	16.6	16.6	16.6	16.6	16.6	16.6
18.7	16.6	16.6	16.6	16.6	16.6	16.6	16.6	16.6	16.6
18.8	16.6	16.6	16.6	16.6	16.6	16.6	16.6	16.6	16.6
18.9	16.6	16.6	16.6	16.6	16.6	16.6	16.6	16.6	16.6
19.0	16.6	16.6	16.6	16.6	16.6	16.6	16.6	16.6	16.6
19.1	16.6	16.6	16.6	16.6	16.6	16.6	16.6	16.6	16.6
19.2	16.6	16.6	16.6	16.6	16.6	16.6	16.6	16.6	16.6
19.3	16.6	16.6	16.6	16.6	16.6	16.6	16.6	16.6	16.6
19.4	16.6	16.6	16.6	16.6	16.6	16.6	16.6	16.6	16.6
19.5	16.6	16.6	16.6	16.6	16.6	16.6	16.6	16.6	16.6
19.6	16.6	16.6	16.6	16.6	16.6	16.6	16.6	16.6	16.6
19.7	16.6	16.6	16.6	16.6	16.6	16.6	16.6	16.6	16.6
19.8	16.6	16.6	16.6	16.6	16.6	16.6	16.6	16.6	16.6
19.9	16.6	16.6	16.6	16.6	16.6	16.6	16.6	16.6	16.6
20.0	16.6	16.6	16.6	16.6	16.6	16.6	16.6	16.6	16.6

AIDS TO NAVIGATION	PLANE COORDINATES		LATITUDE	LONGITUDE
	X	Y		
LT-6 (08/14)	404,377	1,256,041	27°47'12.96"	82°46'43.46"



NOTES:
 1. REFER TO SURVEY NO. 14-113.
 2. SEE SHEET NO. 1 FOR SURVEY NOTES.




 US Army Corps of Engineers
 Jacksonville District
 SAFETY ON THIS JOB
 DEPENDS ON YOU

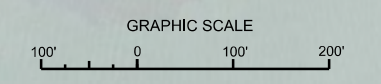
DEPARTMENT OF THE ARMY
 JACKSONVILLE DISTRICT, CORPS OF ENGINEERS
 JACKSONVILLE, FLORIDA

Call by: GRL
 Designed by: WRM
 Drawn by: WRM
 In. No.: 00-11111111
 Date: 00-11-11

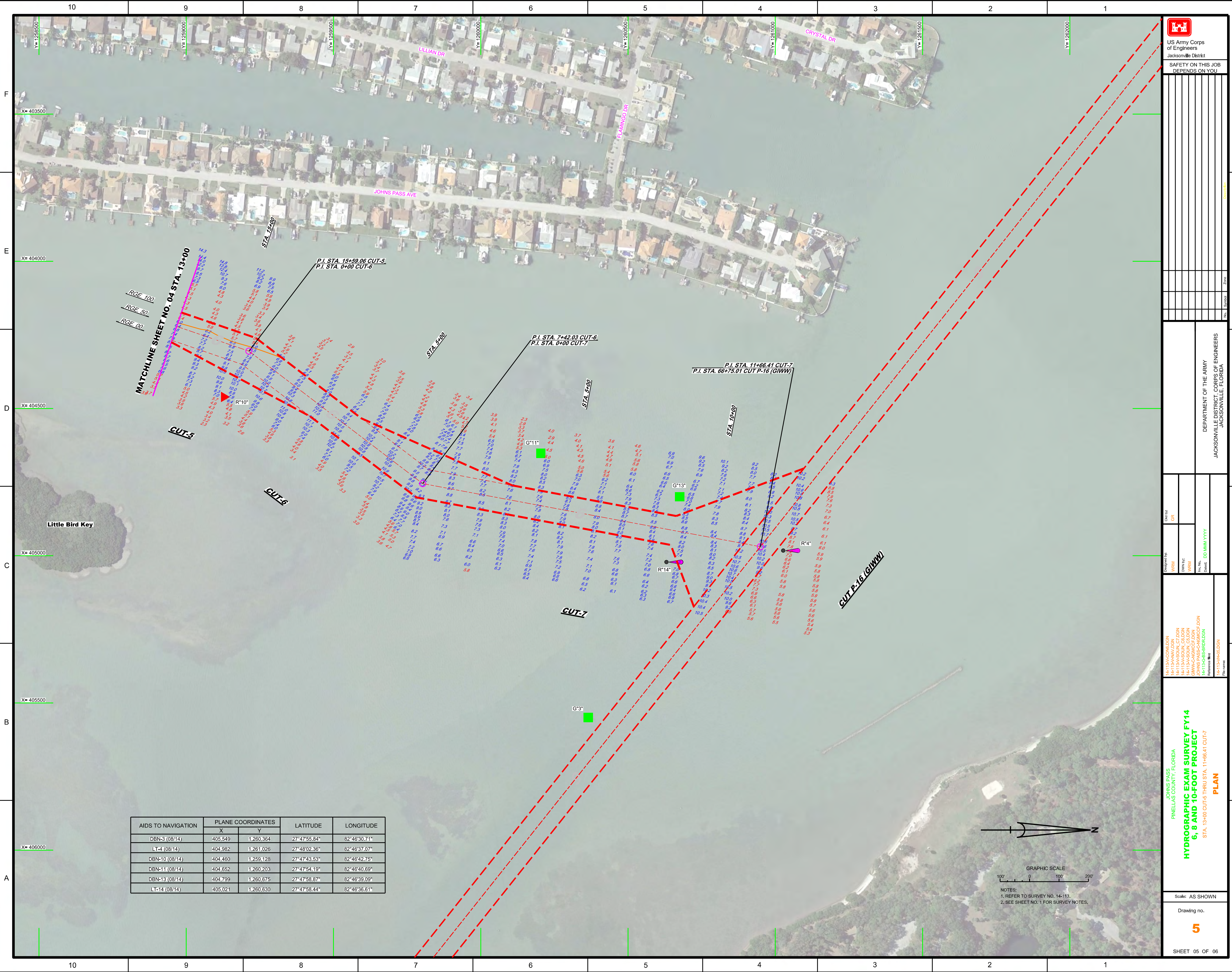
JOHN'S PASS
 PINELAS COUNTY, FLORIDA
**HYDROGRAPHIC EXAM SURVEY FY14
 6, 8 AND 10-FOOT PROJECT**
 STA. 9+00 CUT-3 THRU STA. 13+00 CUT-5
PLAN

Scale: AS SHOWN
 Drawing no. **4**
 SHEET 04 OF 06

AIDS TO NAVIGATION	PLANE COORDINATES		LATITUDE	LONGITUDE
	X	Y		
LT-6 (08/14)	404,377	1,256,041	27°47'12.96"	82°46'43.46"
LT-7 (08/14)	403,734	1,257,489	27°47'27.26"	82°46'50.72"
DBN-8 (08/14)	403,968	1,257,756	27°47'29.91"	82°46'48.13"



NOTES:
 1. REFER TO SURVEY NO. 14-113.
 2. SEE SHEET NO. 1 FOR SURVEY NOTES.



AIDS TO NAVIGATION	PLANE COORDINATES		LATITUDE	LONGITUDE
	X	Y		
DBN-3 (08/14)	405,549	1,260,364	27°47'55.84"	82°46'30.71"
LT-4 (08/14)	404,982	1,261,026	27°48'02.36"	82°46'37.07"
DBN-10 (08/14)	404,460	1,259,128	27°47'43.53"	82°46'42.75"
DBN-11 (08/14)	404,652	1,260,203	27°47'54.19"	82°46'40.69"
DBN-13 (08/14)	404,799	1,260,675	27°47'58.87"	82°46'39.09"
LT-14 (08/14)	405,021	1,260,630	27°47'58.44"	82°46'36.61"



NOTES:
 1. REFER TO SURVEY NO. 14-113.
 2. SEE SHEET NO. 1 FOR SURVEY NOTES.

US Army Corps of Engineers
 Jacksonville District
 SAFETY ON THIS JOB
 DEPENDS ON YOU

DEPARTMENT OF THE ARMY
 JACKSONVILLE DISTRICT, CORPS OF ENGINEERS
 JACKSONVILLE, FLORIDA

HYDROGRAPHIC EXAM SURVEY FY14
6, 8 AND 10-FOOT PROJECT
 STA. 13+00 CUT-5 THRU STA. 11+66.41 CUT-7
PLAN

Scale: AS SHOWN
 Drawing no. **5**
 SHEET 05 OF 06

