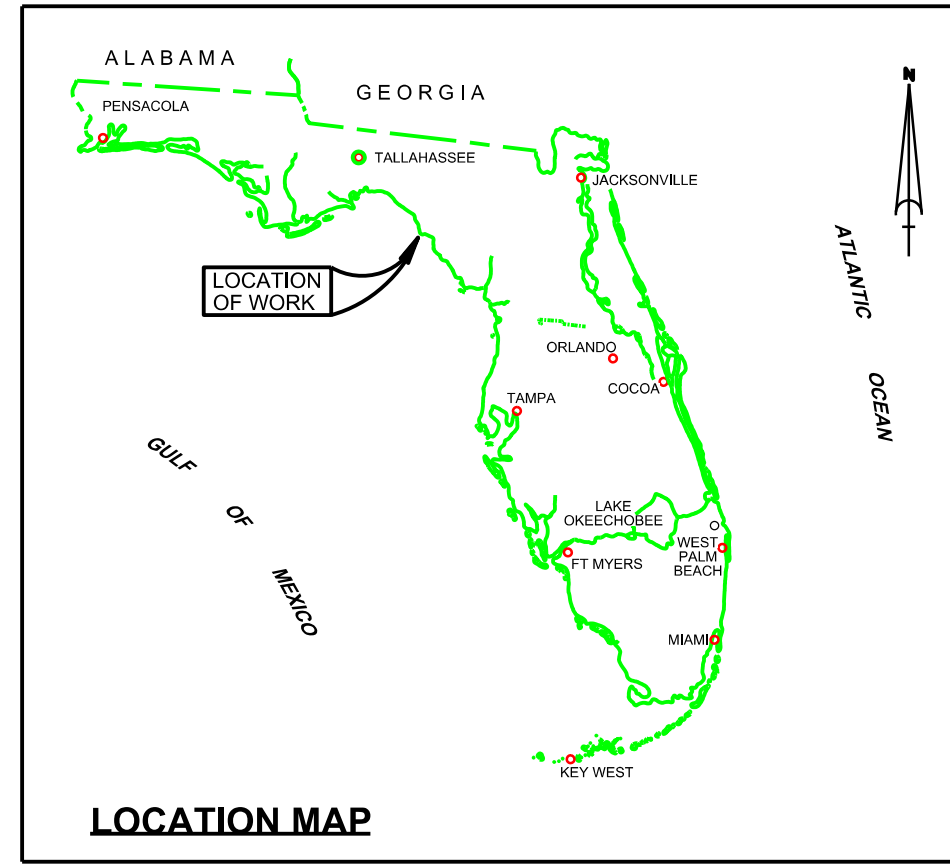


SHEET INDEX



# HORSESHOE COVE DIXIE COUNTY, FLORIDA EXAMINATION SURVEY FY14 6-FOOT PROJECT

**SURVEY NOTES**

- REFER TO SURVEY NO. 14-112.
- SOUNDINGS ARE IN FEET AND TENTHS AND REFER TO NOAA'S REPORTED MEAN LOWER LOW WATER (MLLW) OF THE 1983-2001 TIDAL EPOCH.
- TIDAL REDUCTIONS WERE OBTAINED UTILIZING A REAL-TIME KINEMATIC (RTK) GPS AND REFERENCED TO THE NORTH AMERICAN VERTICAL DATUM OF 1988 (NAVD88) THEN CONVERTED TO MLLW USING TIDAL BENCHMARK "SHELTON" (PID: AR1607). THE DATUM SHIFT WAS 2.04 FEET AS DETERMINED FROM NGS/NOAA TIDAL ELEVATION INDEX FOR THAT STATION.
- ALL ELEVATIONS ARE BELOW THE CHART DATUM UNLESS PRECEDED BY A (+) SIGN.
- PLANE COORDINATES ARE BASED ON THE TRANSVERSE MERCATOR PROJECTION FOR THE NORTH ZONE OF FLORIDA AND REFERENCED TO NORTH AMERICAN DATUM OF 1983 (NAD83).
- ALL AZIMUTHS ARE GRID; RECKONED CLOCKWISE FROM SOUTH.
- ALL STATIONING REFERS TO THE CENTERLINE OF THE CHANNEL.
- THIS SURVEY WAS PERFORMED USING REAL-TIME KINEMATIC (RTK) GPS POSITIONING WITH THE FOLLOWING REFERENCE BASE LOCATION:  
REFERENCE BASE LOCATED AT "SHELTON (PID: AR1607)  
TIDE STAFF SET AT BOAT LAUNCH SITE (XY = 2353232.99, 160990.372)  
VERTICAL MEASUREMENTS WERE MADE USING AN ODOM DUAL-FREQUENCY (24/200 KHZ) TRANSDUCER WITH AN ODOM CVM FATHOMETER AIDED BY A TSS DMS-25 MOTION COMPENSATOR. ALL SOUNDINGS SHOWN ARE IN HIGH FREQUENCY.
- AIDS TO NAVIGATION WERE LOCATED DURING THIS SURVEY.
- THE INFORMATION DEPICTED ON THIS MAP REPRESENTS THE RESULTS OF SURVEYS MADE ON THE DATES INDICATED ABOVE AND CAN ONLY BE CONSIDERED AS INDICATING THE GENERAL CONDITIONS AT THAT TIME. THIS CHART IS SOLELY FOR THE DISTRIBUTION OF AVAILABLE DEPTHS AT THE TIME OF THE SURVEY.
- SURVEY ACCURACY PERFORMANCE STANDARDS, QUALITY CONTROL AND QUALITY ASSURANCE REQUIREMENTS WERE FOLLOWED DURING THIS SURVEY IN ACCORDANCE WITH USACE EM 1110-2-1003, HYDROGRAPHIC SURVEYING, 30 NOV 13.
- DATA COLLECTED BY HYATT SURVEY SERVICES, BRADENTON, FL.

LEGEND	
	MONUMENT
	LIGHTED BEACON
	GREEN DAYBEACON
	RED DAYBEACON
	RED LIGHTED BUOY
	GREEN LIGHTED BUOY
	CAN BUOY
	NUN BUOY
	TIDE STAFF
	PROJECT DEPTH

US Army Corps of Engineers  
Jacksonville District

SAFETY ON THIS JOB  
DEPENDS ON YOU

---

DESIGNED BY: WRM  
DRAWN BY: WRM  
CHECKED BY: DOJ  
DATE: 00/00/00

FILE NAME: H4-112-6-BS-BSR1.DGN  
PROJECT: H4-112-6-BS-BSR1.DGN

---

HORSESHOE COVE  
DIXIE COUNTY, FLORIDA  
**HYDROGRAPHIC EXAM SURVEY FY14  
6-FOOT PROJECT**  
INDEX, LOCATION AND VICINITY  
MAP

---

Scale: AS SHOWN

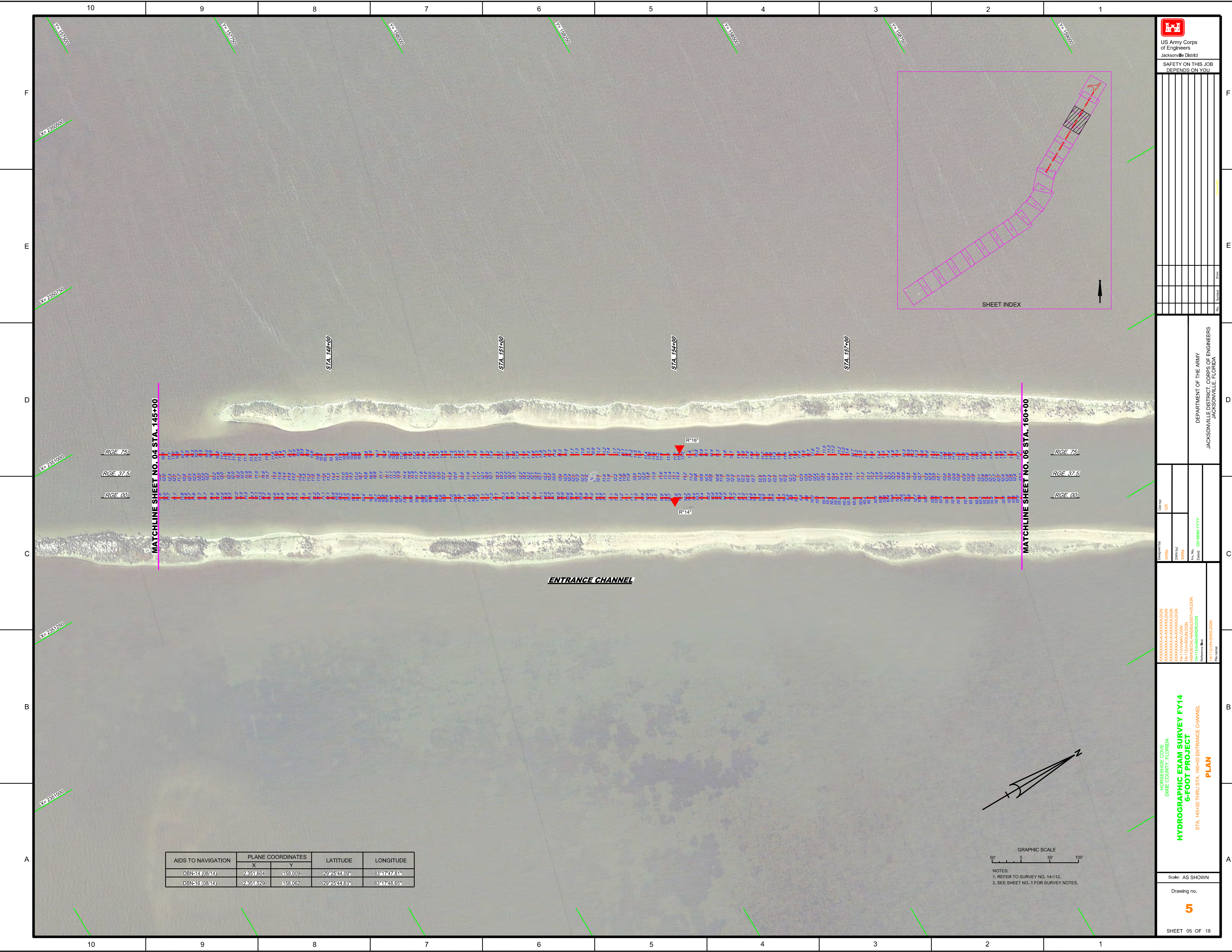
Drawing no. **1**

SHEET 01 OF 18





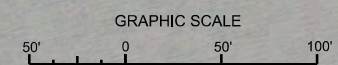
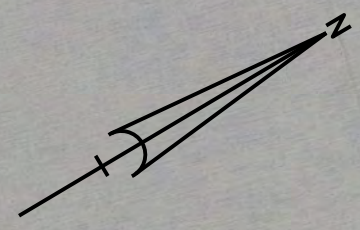




MATCHLINE SHEET NO. 04 STA. 145+00

MATCHLINE SHEET NO. 06 STA. 160+00

ENTRANCE CHANNEL



NOTES:  
 1. REFER TO SURVEY NO. 14-112.  
 2. SEE SHEET NO. 1 FOR SURVEY NOTES.

AIDS TO NAVIGATION	PLANE COORDINATES		LATITUDE	LONGITUDE
	X	Y		
DBN-14 (08/14)	2,351,604	158,009	29°25'44.09"	83°17'47.81"
DBN-16 (08/14)	2,351,529	158,062	29°25'44.63"	83°17'48.65"

US Army Corps  
of Engineers  
Jacksonville District

SAFETY ON THIS JOB  
DEPENDS ON YOU

No.	Symbol	Zone

Checked By: **GRL**

Designed By: **WRM**

Drawn By: **WRM**

File No.: **DD/AMM/VVYY**

Contract: **DD/AMM/VVYY**

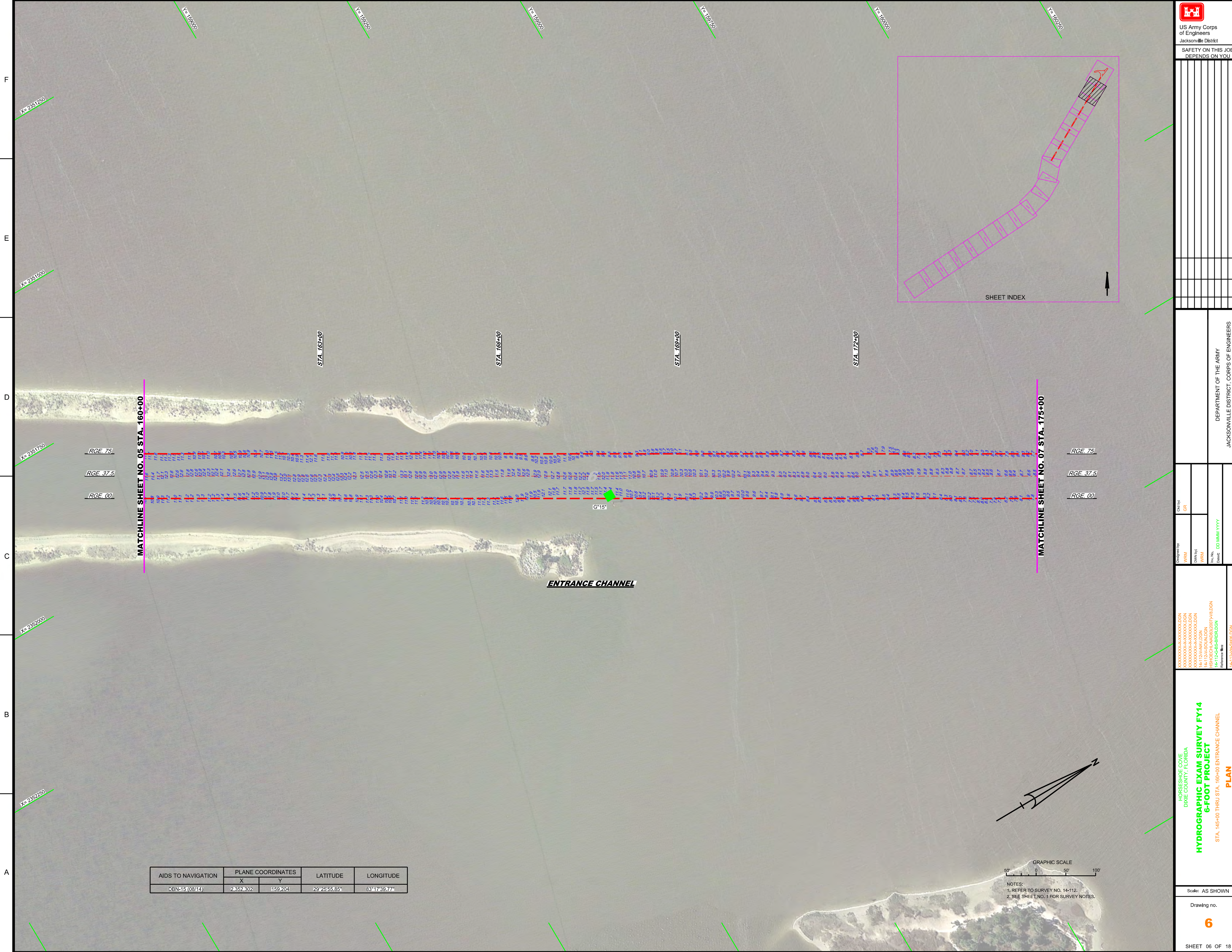
DEPARTMENT OF THE ARMY  
 JACKSONVILLE DISTRICT, CORPS OF ENGINEERS  
 JACKSONVILLE, FLORIDA

HORSESHOE COVE  
 DIXIE COUNTY, FLORIDA  
 HYDROGRAPHIC EXAM SURVEY FY14  
 6-FOOT PROJECT  
 STA. 145+00 THRU STA. 160+00 ENTRANCE CHANNEL  
**PLAN**

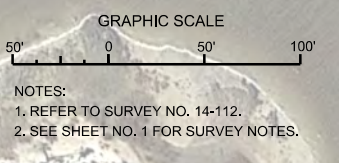
Scale: AS SHOWN


Drawing no.  
5

SHEET 05 OF 18



AIDS TO NAVIGATION	PLANE COORDINATES		LATITUDE	LONGITUDE
	X	Y		
DBN-15 (08/14)	2352.302	159.204	29°25'55.85"	83°17'39.77"





US Army Corps of Engineers  
Jacksonville District

**SAFETY ON THIS JOB DEPENDS ON YOU**

No.	Symbol	Zone

DEPARTMENT OF THE ARMY  
JACKSONVILLE DISTRICT, CORPS OF ENGINEERS  
JACKSONVILLE, FLORIDA

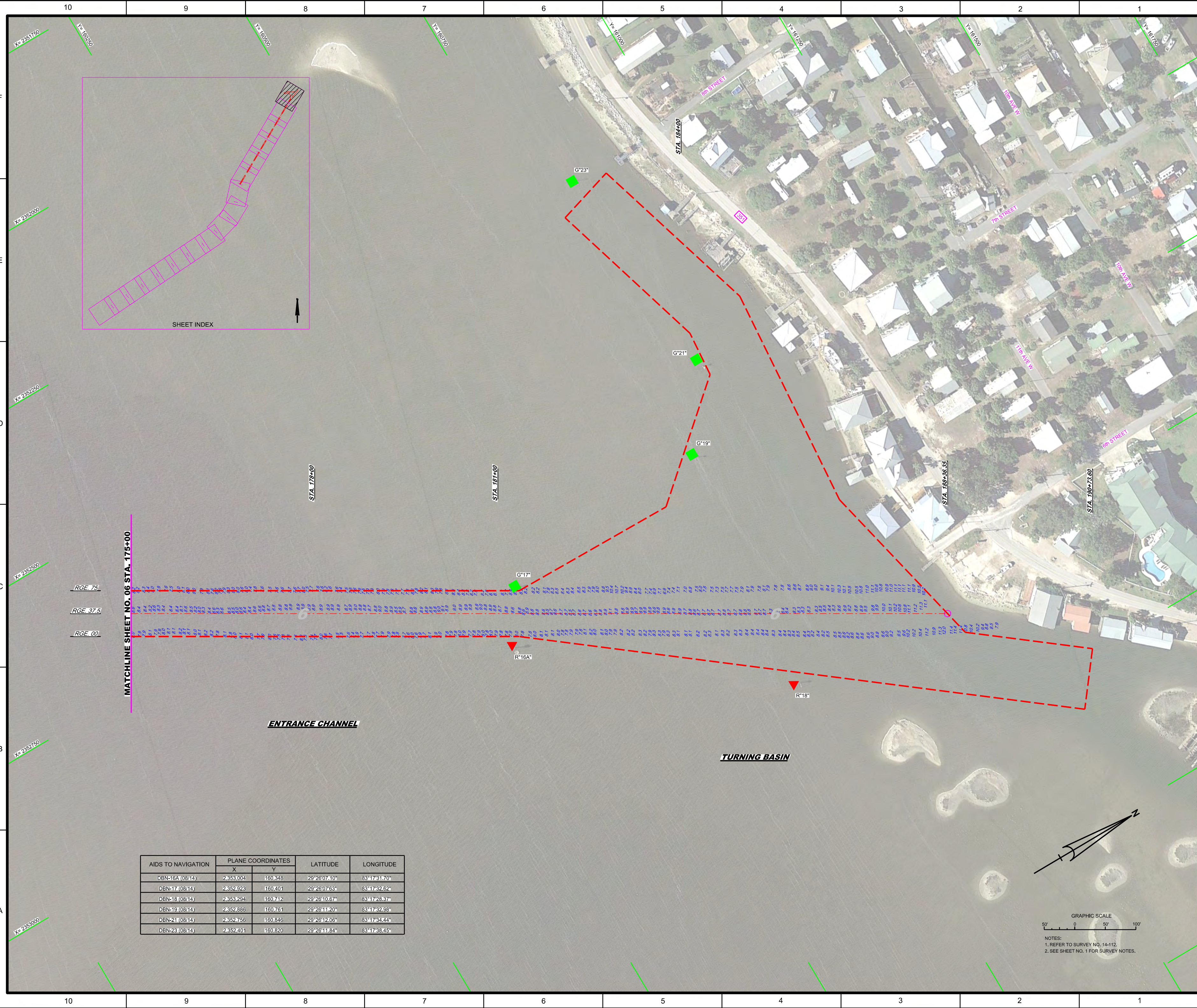
Check By: GRL  
 Designed By: WRM  
 DWN By: WRM  
 File No.: 14-125-EB-SB-RI-08.DGN  
 Project: 14-125-EB-SB-RI-08.DGN  
 Reference File: 14-125-EB-SB-RI-08.DGN

**HORSESHOE COVE  
DIXIE COUNTY, FLORIDA  
HYDROGRAPHIC EXAM SURVEY FY14  
6-FOOT PROJECT  
STA. 145+00 THRU STA. 180+00 ENTRANCE CHANNEL  
PLAN**

Scale: AS SHOWN

Drawing no.  
**6**

SHEET 06 OF 18



AIDS TO NAVIGATION	PLANE COORDINATES		LATITUDE	LONGITUDE
	X	Y		
DBN-16A (08/14)	2,353,004	160,348	29°26'07.10"	83°17'31.70"
DBN-17 (08/14)	2,352,923	160,401	29°26'07.63"	83°17'32.62"
DBN-18 (08/14)	2,353,294	160,742	29°26'10.67"	83°17'28.37"
DBN-19 (08/14)	2,352,886	160,761	29°26'11.20"	83°17'32.98"
DBN-21 (08/14)	2,352,756	160,846	29°26'12.06"	83°17'34.44"
DBN-23 (08/14)	2,352,401	160,820	29°26'11.84"	83°17'38.45"

GRAPHIC SCALE  
0 50 100'  
NOTES:  
1. REFER TO SURVEY NO. 14-112.  
2. SEE SHEET NO. 1 FOR SURVEY NOTES.



























US Army Corps of Engineers  
Jacksonville District

**SAFETY ON THIS JOB  
DEPENDS ON YOU**


---

DEPARTMENT OF THE ARMY  
JACKSONVILLE DISTRICT, CORPS OF ENGINEERS  
JACKSONVILLE, FLORIDA

---

<small>Designed by:</small> WRM	<small>Check by:</small> GRL
<small>DRAWN BY:</small> WRM	<small>DATE:</small> DD/MW/YYYY
<small>PROJECT:</small> H4-12-G-BB-RR-01-DGN	<small>FILE NAME:</small> H4-12-G-BB-RR-01-DGN

---

HORSESHOE COVE  
DIXIE COUNTY, FLORIDA  
**HYDROGRAPHIC EXAM SURVEY FY14**  
**6-FOOT PROJECT**  
UNCONTROLLED CENTERLINE  
**PLAN**

---

Scale: AS SHOWN  
Drawing no.  
**18**  
SHEET 18 OF 18

AIDS TO NAVIGATION	PLANE COORDINATES		LATITUDE	LONGITUDE
	X	Y		
LT-2 (08/14)	2,337,907	142,924	29°23'16.18"	83°20'24.42"

GRAPHIC SCALE  
0 100 200

NOTES:  
1. REFER TO SURVEY NO. 14-112.  
2. SEE SHEET NO. 1 FOR SURVEY NOTES.

MATCHLINE SHEET NO. 17

