

# TAMPA HARBOR UPPER HILLSBOROUGH BAY HILLSBOROUGH COUNTY, FLORIDA EXAMINATION SURVEY FY14 12, 34 AND 43-FOOT PROJECT

### SURVEY NOTES

- REFER TO SURVEY NO. 14-110.
  - DEPTHS DEPICTED BY THIS SURVEY ARE REFERENCED TO MEAN LOWER LOW WATER (MLLW), TIDAL EPOCH 1983-2001 AS REPORTED BY THE NATIONAL OCEANIC AND ATMOSPHERIC ADMINISTRATION (NOAA). NOAA'S DATUM MODEL WAS USED AND CALIBRATED TO THE PUBLISHED MLLW HEIGHTS OF THE BENCH MARKS ASSOCIATED WITH THE TIDE GAGE SITE SPECIFIED BELOW:  
NOAA TIDAL STATION 872-6657, DAVIS ISLAND, HILLSBOROUGH BAY FOR UPPER TAMPA CHANNELS
  - TIDAL REDUCTIONS WERE OBTAINED UTILIZING A REAL-TIME KINEMATIC (RTK) GPS AND REFERENCED TO MLLW UTILIZING A HYPACK KINEMATIC TIDE DATUM (KTD) MODEL NAMED "SPC-FL-WEST-2010-12-07.KTD"
  - ALL ELEVATIONS ARE BELOW THE CHART DATUM UNLESS PRECEDED BY A (+) SIGN.
  - PLANE COORDINATES ARE BASED ON THE TRANSVERSE MERCATOR PROJECTION FOR THE WEST ZONE OF FLORIDA AND REFERENCED TO NORTH AMERICAN DATUM OF 1983 (NAD83).
  - ALL AZIMUTHS ARE GRID; RECKONED CLOCKWISE FROM SOUTH.
  - ALL STATIONING REFERS TO THE CENTERLINE OF THE CHANNEL.
  - THIS SURVEY WAS PERFORMED USING REAL-TIME KINEMATIC (RTK) GPS POSITIONING WITH THE FOLLOWING REFERENCE BASE LOCATIONS:  
REFERENCE BASE LOCATED AT "Q-261" (NGS PID: AG6024)  
TIDE STAFF LOCATED FROM "Q-261" (NGS PID: AG6024)
  - VERTICAL MEASUREMENTS WERE MADE USING A ROSS MODEL 835 SMARTSOUNDER WITH DUAL-FREQUENCY (28/200 KHZ) SINGLE-BEAM TRANSDUCER. SOUNDINGS SHOWN ARE IN LOW FREQUENCY.
- | VESSEL | DATE OF SURVEY | CUT                        |
|--------|----------------|----------------------------|
| WB-34  | 14 MAY 2014    | SEDDON CHANNEL             |
| WB-34  | 16 MAY 2014    | LOWER SPARKMAN CHANNEL     |
| WB-34  | 02 JUN 2014    | UPPER SPARKMAN CHANNEL     |
| WB-34  | 03 JUN 2014    | YBOR CHANNEL               |
| WB-34  | 09-10 JUN 2014 | EAST BAY CHANNEL           |
| WB-34  | 10 JUN 2014    | PORT SUTTON CHANNEL & T.B. |
| WB-34  | 11-12 JUN 2014 | EAST BAY EXTENSIONS        |
| WB-34  | 12-14 JUN 2014 | PORT SUTTON TERM. CH.      |
- AIDS TO NAVIGATION WERE LOCATED DURING THIS SURVEY.
  - THE INFORMATION DEPICTED ON THIS MAP REPRESENTS THE RESULTS OF SURVEYS MADE ON THE DATES INDICATED ABOVE AND CAN ONLY BE CONSIDERED AS INDICATING THE GENERAL CONDITIONS AT THAT TIME. THIS CHART IS SOLELY FOR THE DISTRIBUTION OF AVAILABLE DEPTHS AT THE TIME OF THE SURVEY.
  - SURVEY ACCURACY PERFORMANCE STANDARDS, QUALITY CONTROL, AND QUALITY ASSURANCE REQUIREMENTS WERE FOLLOWED DURING THIS SURVEY IN ACCORDANCE WITH USACE EM 1110-2-1003, HYDROGRAPHIC SURVEYING, 30 NOV 13.

| SURVEY ZONE | CUTS  |
|-------------|---|
| 4           | CUT-F, CUT-G, GADSDEN POINT CUT   |
| 5           | CUT-J, CUT-J2, CUT-K  |
| 6           | CUT-A (HB), CUT-C (HB), CUT-D (HB)  |
| 7           | LOWER & UPPER SPARKMAN, YBOR CH, SEDDON CH, PORT SUTTON CH, PORT SUTTON T.B., PORT SUTTON TERMINAL CH, EAST BAY CH, EAST BAY EXTENSIONS 1 & 2 |

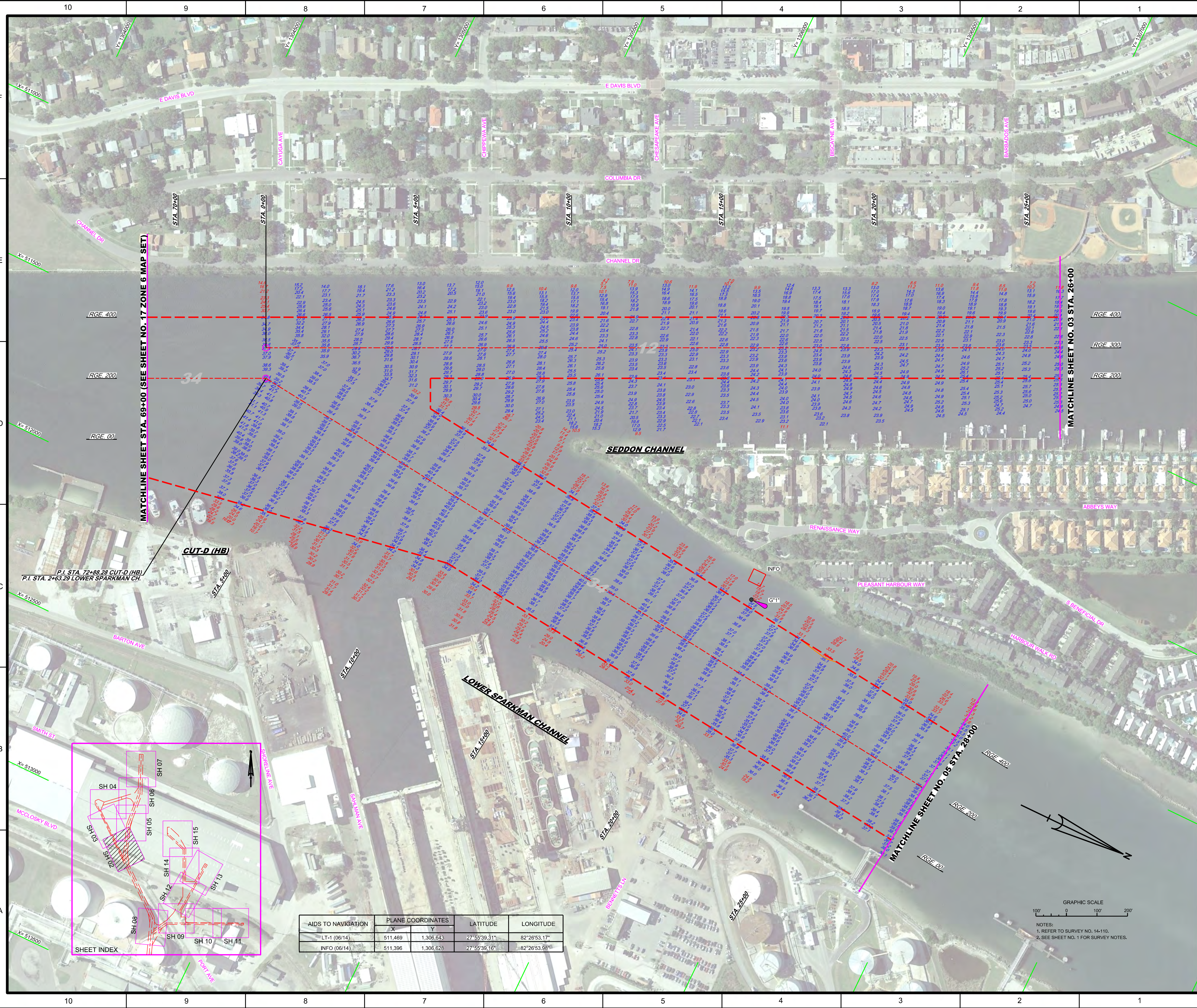
| LEGEND |                    |
|--------|--------------------|
|        | MONUMENT           |
|        | LIGHTED BEACON     |
|        | GREEN DAY BEACON   |
|        | RED DAY BEACON     |
|        | RED LIGHTED BUOY   |
|        | GREEN LIGHTED BUOY |
|        | CAN BUOY           |
|        | NUN BUOY           |
|        | TIDE STAFF         |
|        | PROJECT DEPTH      |

US Army Corps of Engineers  
Jacksonville District

SAFETY ON THIS JOB  
DEPENDS ON YOU

|   |                  |               |                     |                 |
|---|------------------|---------------|---------------------|-----------------|
|   |                  |               |                     |                 |
| Checked by: GR  | Designed by: WRM | Drawn by: WRM | Plot Date: 00/00/00 | Scale: AS SHOWN |
| <p>TAMPA HARBOR<br/>HILLSBOROUGH COUNTY, FLORIDA<br/><b>HYDROGRAPHIC EXAM SURVEY FY14<br/>12, 34 AND 43-FOOT PROJECT</b><br/>INDEX, LOCATION AND VICINITY MAP</p> |                  |               |                     |                 |
| <p>DEPARTMENT OF THE ARMY<br/>JACKSONVILLE DISTRICT, CORPS OF ENGINEERS<br/>JACKSONVILLE, FLORIDA</p>   |                  |               |                     |                 |
| <p>Drawing no. <b>1</b></p>   |                  |               |                     |                 |
| <p>SHEET 01 OF 15</p>   |                  |               |                     |                 |

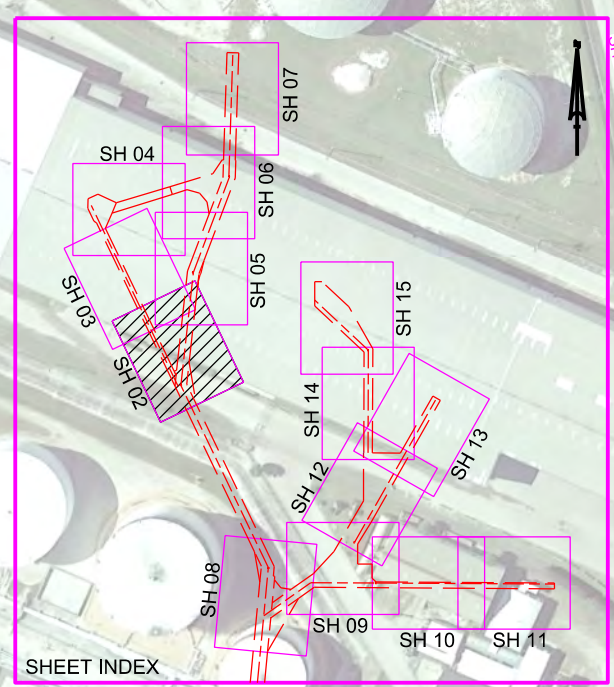




MATCHLINE SHEET NO. 17 ZONE 6 MAP SET

MATCHLINE SHEET NO. 03 STA. 26+00

**CUT-D (HB)**  
 P.I. STA. 7+88.28 CUT-D (HB)  
 P.I. STA. 2+63.29 LOWER SPARKMAN CH.



| AIDS TO NAVIGATION | PLANE COORDINATES |           | LATITUDE     | LONGITUDE    |
|--------------------|-------------------|-----------|--------------|--------------|
|                    | X                 | Y         |              |              |
| LT-1 (06/14)       | 511,469           | 1,306,643 | 27°55'39.31" | 82°26'53.17" |
| INFO (06/14)       | 511,396           | 1,306,628 | 27°55'39.16" | 82°26'53.98" |



NOTES:  
 1. REFER TO SURVEY NO. 14-110.  
 2. SEE SHEET NO. 1 FOR SURVEY NOTES.

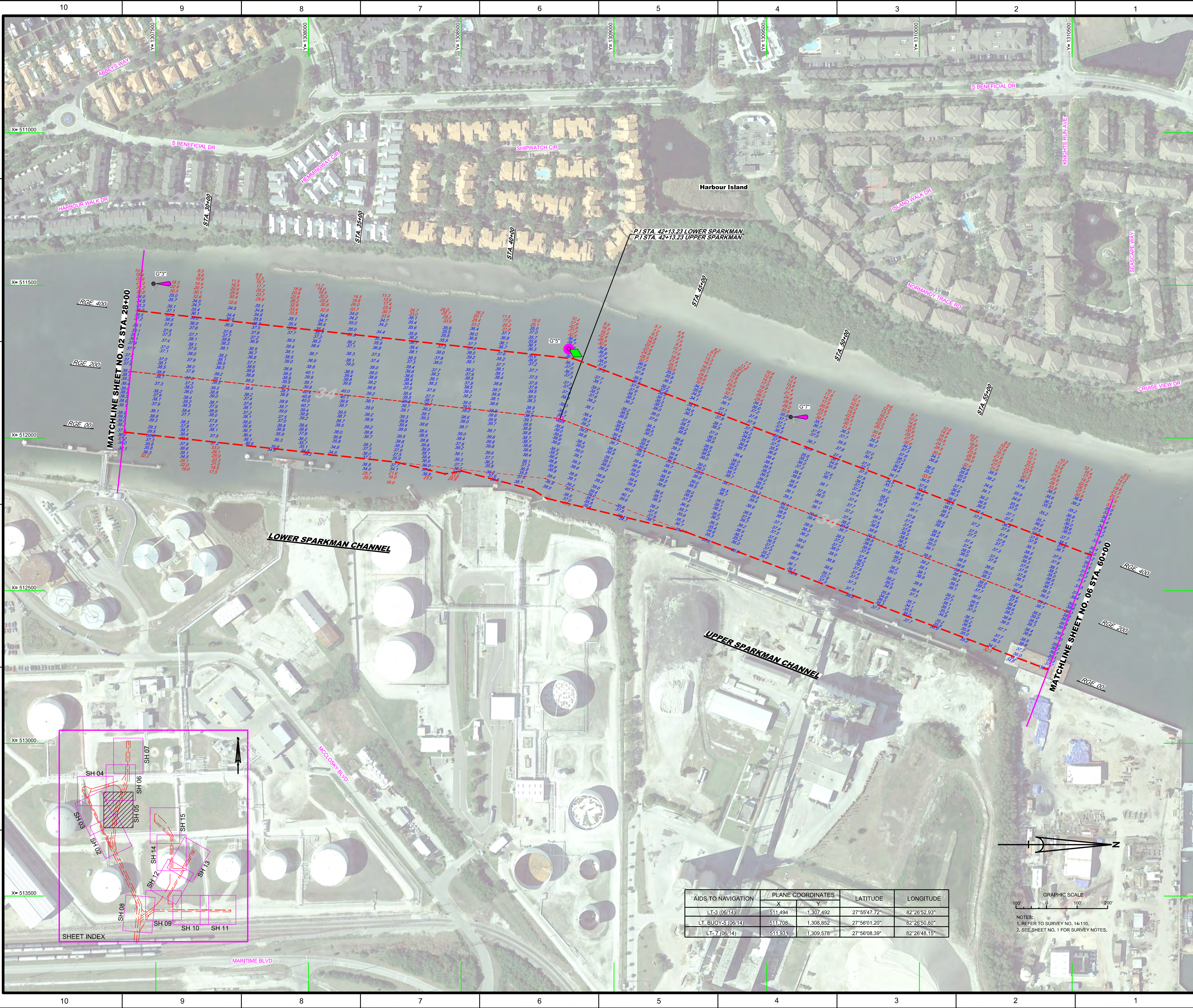













| AIDS TO NAVIGATION | PLANE COORDINATES |           | LATITUDE     | LONGITUDE    |
|--------------------|-------------------|-----------|--------------|--------------|
|                    | X                 | Y         |              |              |
| LT-3 (06/14)       | 511,494           | 1,307,492 | 27°55'47.72" | 82°26'52.93" |
| LT BUOY-5 (06/14)  | 511,708           | 1,308,852 | 27°56'01.20" | 82°26'50.60" |
| LT-7 (06/14)       | 511,931           | 1,309,578 | 27°56'08.39" | 82°26'48.15" |



NOTES:  
 1. REFER TO SURVEY NO. 14-110.  
 2. SEE SHEET NO. 1 FOR SURVEY NOTES.



US Army Corps of Engineers  
 Jacksonville District  
 SAFETY ON THIS JOB  
 DEPENDS ON YOU

---

DESIGNED BY: **WRM**  
 DRAWN BY: **WRM**  
 CHECKED BY: **DD**  
 DATE: **00/00/00**

---

PROJECT: **TAMPA HARBOR HILLSBOROUGH COUNTY, FLORIDA HYDROGRAPHIC EXAM SURVEY FY14 12, 34 AND 43-FOOT PROJECT**  
 STA. 28+00 LOWER SPARKMAN CH. THRU STA. 60+00 UPPER SPARKMAN CH.

---

Scale: AS SHOWN

Drawing no. **5**

SHEET 05 OF 15





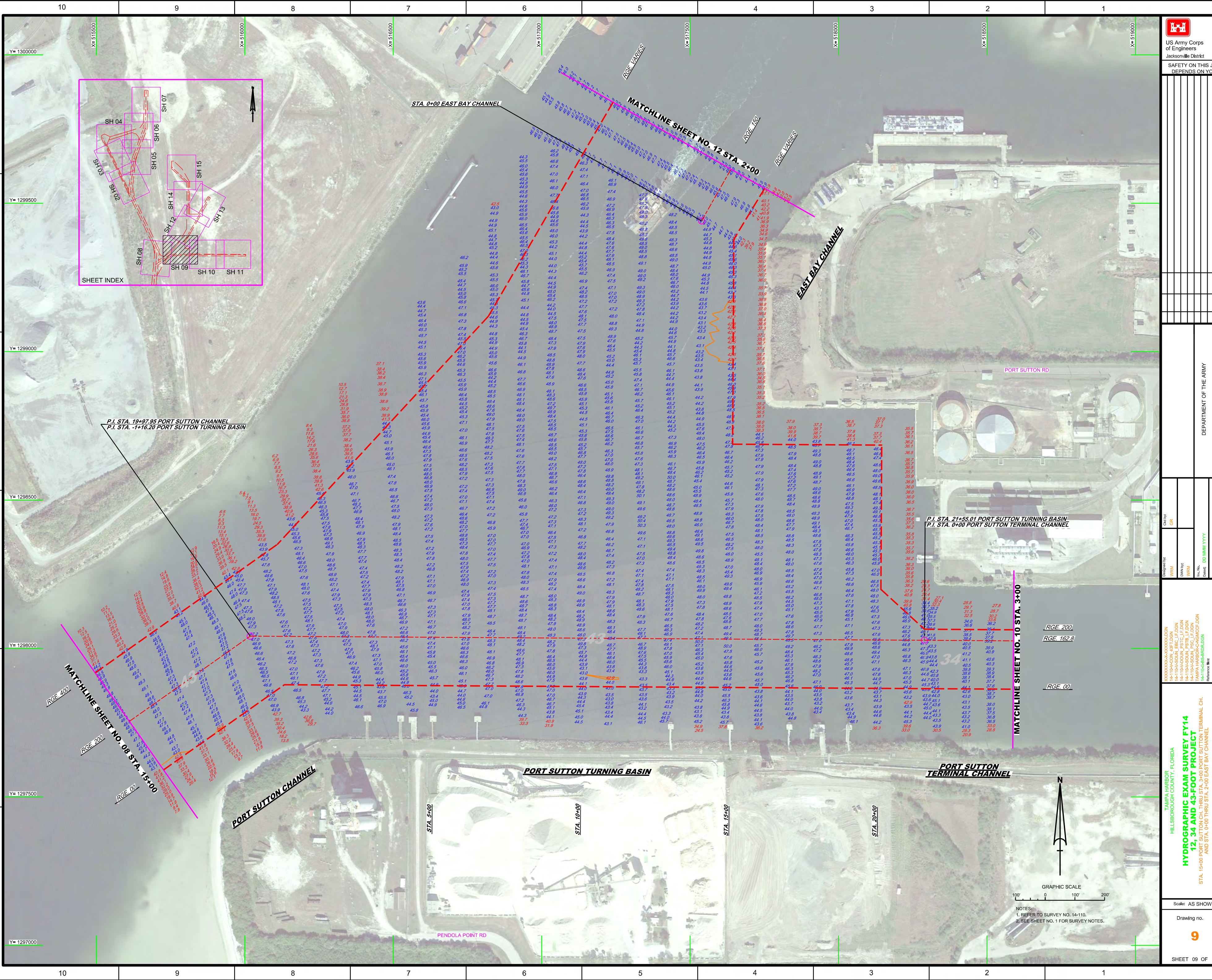















US Army Corps of Engineers  
Jacksonville District

---

SAFETY ON THIS JOB  
DEPENDS ON YOU

---

|   |   |
|---|---|
| DEPARTMENT OF THE ARMY<br>JACKSONVILLE, FLORIDA | JACKSONVILLE DISTRICT CORPS OF ENGINEERS<br>JACKSONVILLE, FLORIDA |
|---|---|

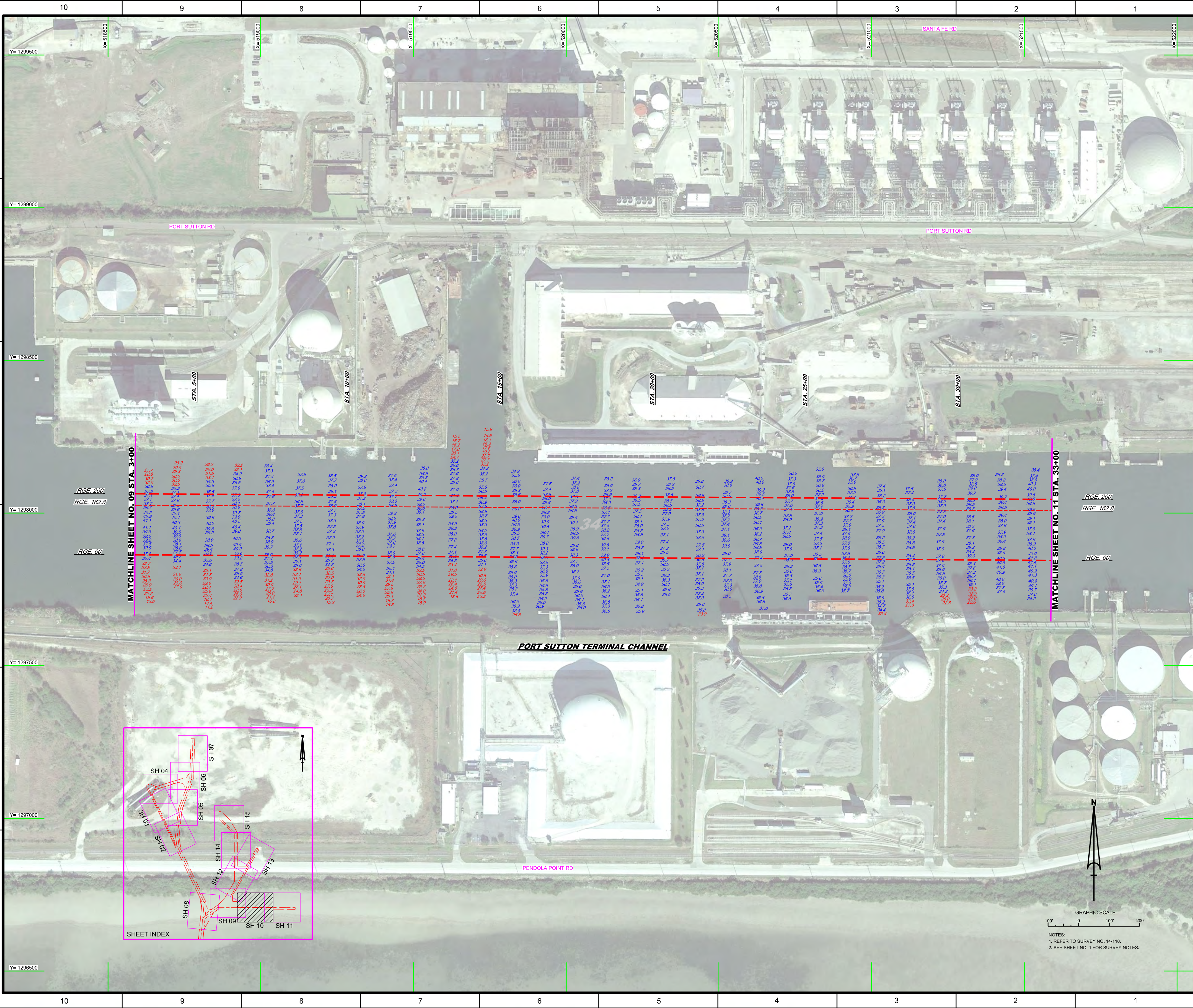
---

|  |  |                       |                        |
|--|--|-----------------------|------------------------|
| Drawn by: <b>WRM</b>   | Check by: <b>GR</b>  | Date: <b>00/00/00</b> | Scale: <b>AS SHOWN</b> |
| Project: <b>HYDROGRAPHIC EXAM SURVEY FY14 12, 34 AND 43-FOOT PROJECT</b> | Station: <b>STA. 15+00 PORT SUTTON CH. THRU STA. 3+00 PORT SUTTON TERMINAL CH. AND STA. 0+00 THRU STA. 2+00 EAST BAY CHANNEL</b> | Drawing No.: <b>9</b> | Sheet: <b>09 OF 15</b> |

---

NOTES:  
 1. REFER TO SURVEY NO. 14-110.  
 2. SEE SHEET NO. 1 FOR SURVEY NOTES.



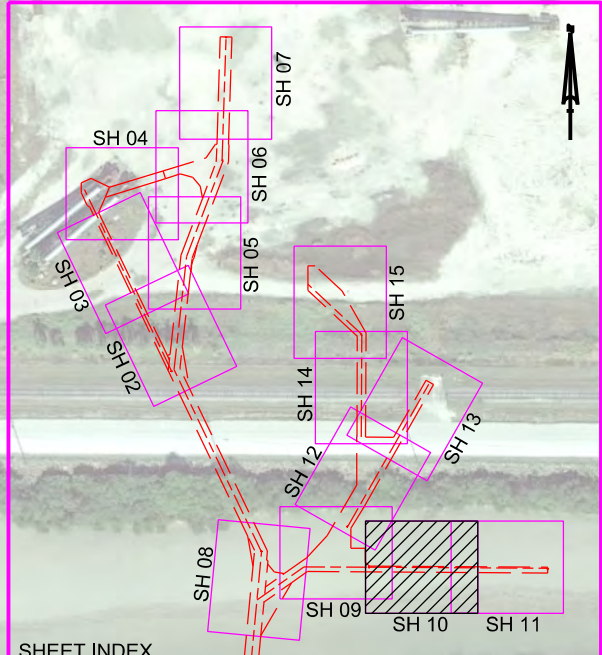


MATCHLINE SHEET NO. 09 STA. 3+00

MATCHLINE SHEET NO. 11 STA. 33+00

RGE. 200  
RGE. 162.8  
RGE. 00

RGE. 200  
RGE. 162.8  
RGE. 00



PORT SUTTON TERMINAL CHANNEL



NOTES:  
1. REFER TO SURVEY NO. 14-110.  
2. SEE SHEET NO. 1 FOR SURVEY NOTES.

**US Army Corps of Engineers**  
Jacksonville District

SAFETY ON THIS JOB  
DEPENDS ON YOU

DEPARTMENT OF THE ARMY  
JACKSONVILLE DISTRICT, CORPS OF ENGINEERS  
JACKSONVILLE, FLORIDA

---

Drawn by: GRL  
Checked by: GRL

Designed by: GRL  
Reviewed by: GRL

Project: TAMPA HARBOR HILLSBOROUGH COUNTY, FLORIDA  
HYDROGRAPHIC EXAM SURVEY FY14  
12, 34 AND 43-FOOT PROJECT  
STA. 3+00 THRU STA. 33+00 PORT SUTTON TERMINAL CHANNEL

Reference files:  
H:\1104\1104\_07.DGN  
H:\1104\1104\_07.DGN

Scale: AS SHOWN

Drawing no.

10

SHEET 10 OF 15

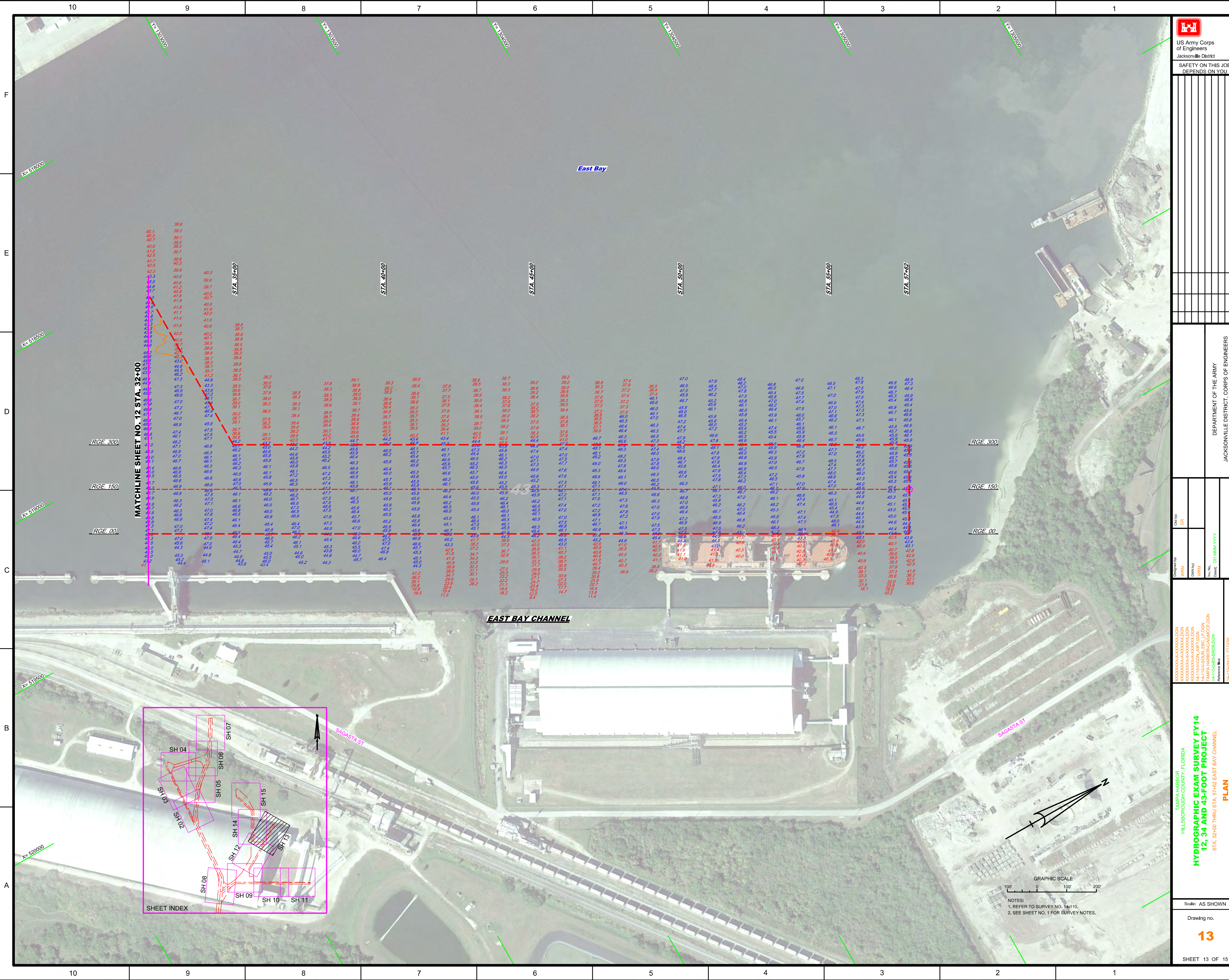












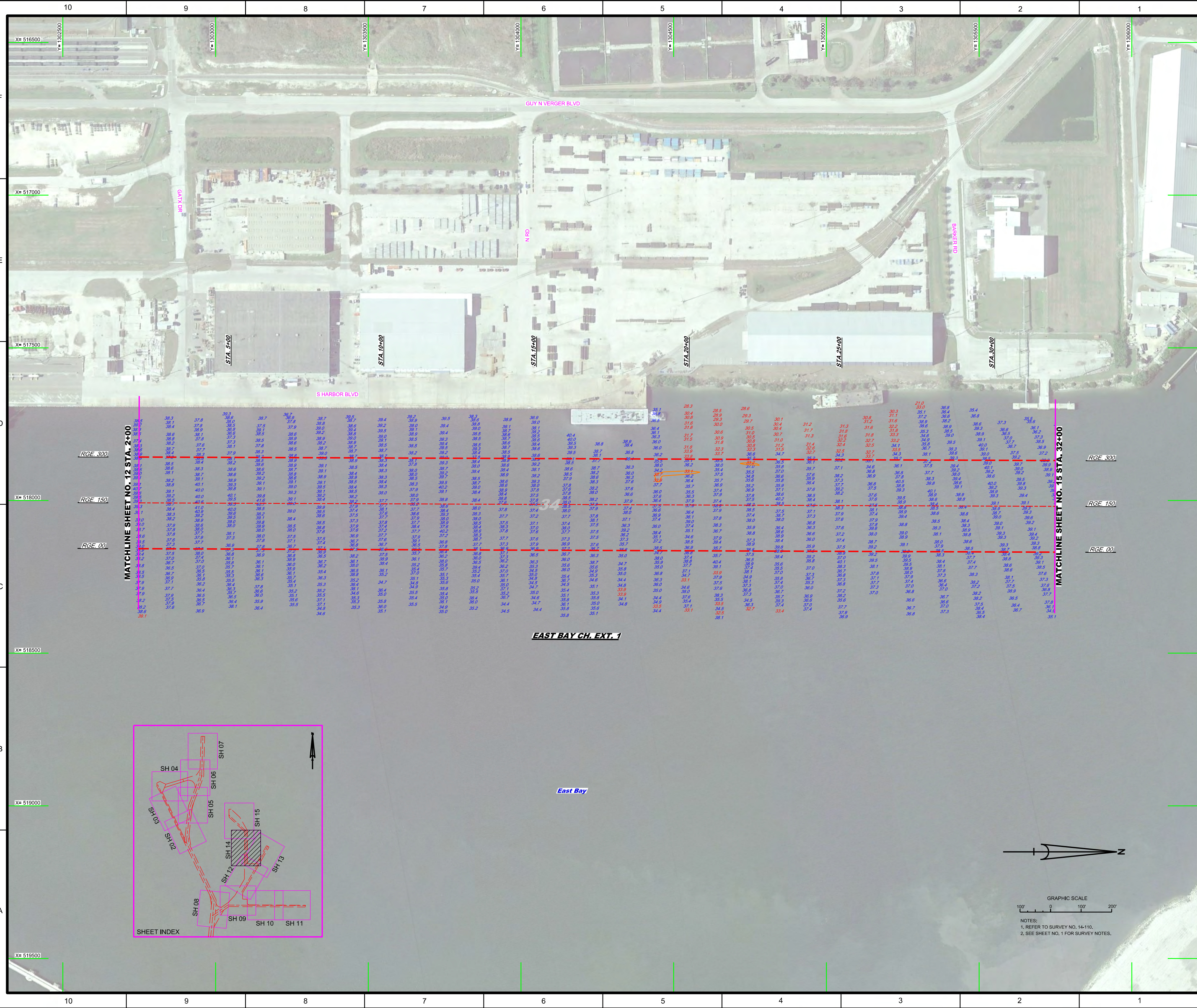
MATCHLINE SHEET NO. 12 STA. 32+00

**EAST BAY CHANNEL**

GRAPHIC SCALE  
100' 0 100' 200'

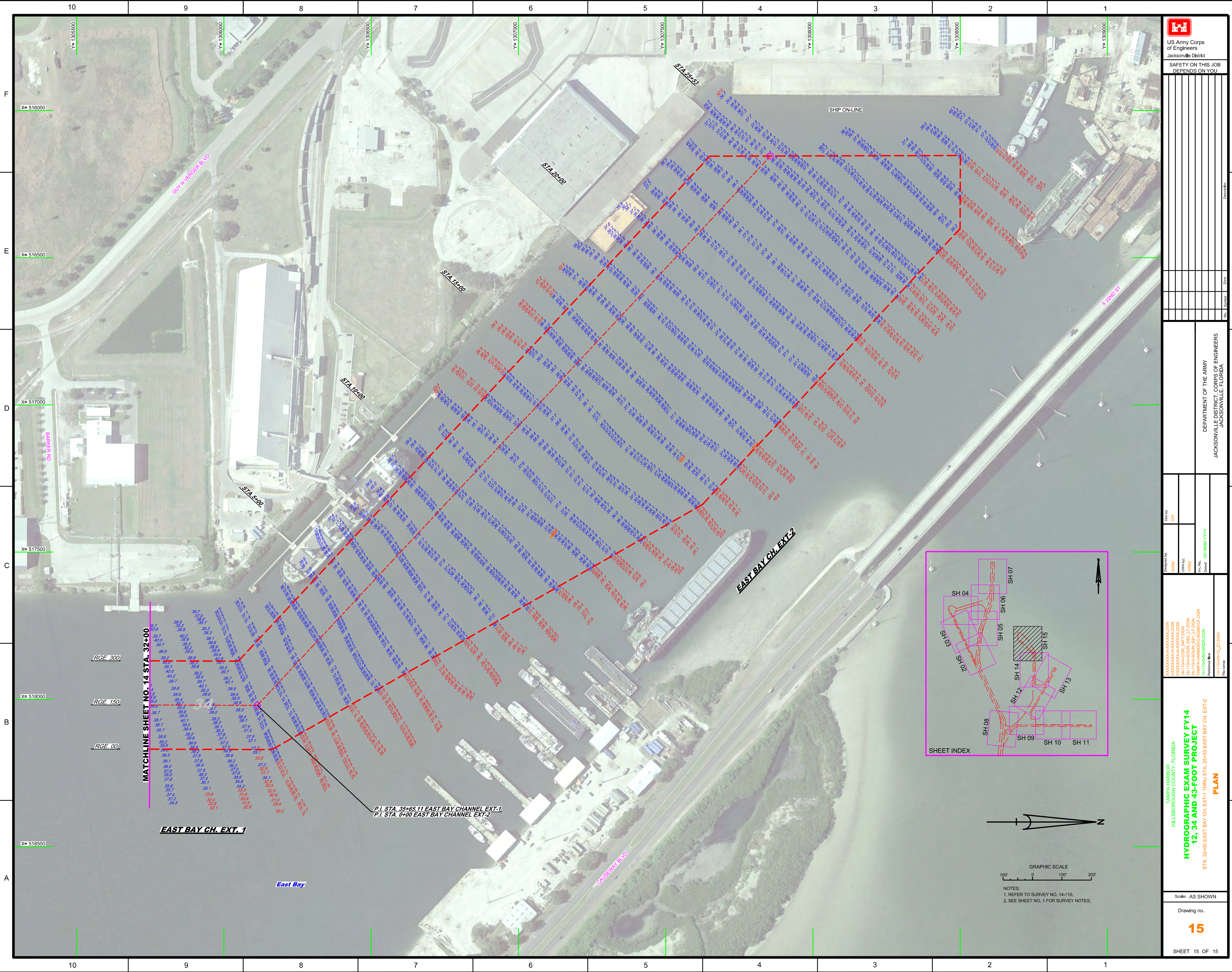
NOTES:  
1. REFER TO SURVEY NO. 141110.  
2. SEE SHEET NO. 1 FOR SURVEY NOTES.





NOTES:  
 1. REFER TO SURVEY NO. 14-110.  
 2. SEE SHEET NO. 1 FOR SURVEY NOTES.





**US Army Corps of Engineers**  
 Jacksonville District  
 SAFETY ON THIS JOB  
 DEPENDS ON YOU

DESIGNED BY: WRM  
 DRAWN BY: WRM  
 CHECKED BY: DD/AMM/VVYY

XXXXXXXXXXXXXXXXXXXX  
 XXXXXXXXXXXXXXXXXXXX  
 XXXXXXXXXXXXXXXXXXXX  
 44-10A-SOIL\_EB\_LF.DGN  
 TAMPA HARBOR-CANAL.DGN  
 44-10A-HS-27.DGN

TAMPA HARBOR  
 HILLSBOROUGH COUNTY, FLORIDA  
**HYDROGRAPHIC EXAM SURVEY FY14**  
**12, 34 AND 43-FOOT PROJECT**  
 STA. 32+00 EAST BAY CH. EXT-1 THRU STA. 25+65 EAST BAY CH. EXT-2  
**PLAN**

Scale: AS SHOWN  
 Drawing no.  
**15**  
 SHEET 15 OF 15