

# TAMPA HARBOR CUTS A, C, AND D (HB) HILLSBOROUGH COUNTY, FLORIDA EXAMINATION SURVEY FY14 34, 41 AND 43-FOOT PROJECT

### SURVEY NOTES

- REFER TO SURVEY NO. 14-098.
- DEPTHS DEPICTED BY THIS SURVEY ARE REFERENCED TO MEAN LOWER LOW WATER (MLLW), TIDAL EPOCH 1983-2001 AS REPORTED BY THE NATIONAL OCEANIC AND ATMOSPHERIC ADMINISTRATION (NOAA). NOAA'S VDATUM MODEL WAS USED AND CALIBRATED TO THE PUBLISHED MLLW HEIGHTS OF THE BENCHMARKS ASSOCIATED WITH THE TIDE GAGE SITE SPECIFIED BELOW.  
NOAA TIDAL STATION 872-6562, HILLSBOROUGH BAY EAST FOR CUT-A AND CUT-C (HB).  
NOAA TIDAL STATION 872-6657, DAVIS ISLAND, HILLSBOROUGH BAY FOR CUTS C AND D (HB).
- TIDAL REDUCTIONS WERE OBTAINED UTILIZING A REAL-TIME KINEMATIC (RTK) GPS AND REFERENCED TO MLLW UTILIZING A HYPACK KINEMATIC TIDE DATUM (KTD) MODEL NAMED "SPC-FL-WEST-2010-12-07.KTD"
- ALL ELEVATIONS ARE BELOW THE CHART DATUM UNLESS PRECEDED BY A (+) SIGN.
- PLANE COORDINATES ARE BASED ON THE TRANSVERSE MERCATOR PROJECTION FOR THE WEST ZONE OF FLORIDA AND REFERENCED TO NORTH AMERICAN DATUM OF 1983 (NAD83).
- ALL AZIMUTHS ARE GRID; RECKONED CLOCKWISE FROM SOUTH.
- ALL STATIONING REFERS TO THE CENTERLINE OF THE CHANNEL.
- THIS SURVEY WAS PERFORMED USING REAL-TIME KINEMATIC GPS POSITIONING WITH THE FOLLOWING REFERENCE BASE LOCATIONS:  
REFERENCE BASE LOCATED AT "872-6562 B" (NGS PID: AG7604)  
TIDE STAFF LOCATED FROM TIDAL BENCHMARK "872-6562 B" (NGS PID: AG7604)  
REFERENCE BASE LOCATED AT "Q-261" (NGS PID: AG6024)  
TIDE STAFF LOCATED FROM TIDAL BENCHMARK "Q-261" (NGS PID: AG6024)
- VERTICAL MEASUREMENTS WERE MADE USING A ROSS MODEL 835C SMARTSOUNDER WITH A DUAL-FREQUENCY (28/200 KHZ) SINGLE-BEAM TRANSDUCER. HIGH FREQUENCY SOUNDINGS ARE SHOWN FOR CUT-A (HB) AND FOR CUT-C (HB) STA. 0+00 - 315+00. LOW FREQUENCY SOUNDINGS ARE SHOWN FOR CUT-C (HB) STA. 315+00 - 341+77.1 AND FOR CUT-D (HB).
- VESSEL DATE OF SURVEY CUT  
SB JACKSONVILLE 15 APR 2014 CUT-A (HB), STA. 46+00 - 60+45  
SB JACKSONVILLE 17 APR 2014 CUT-A (HB), STA. -2+00 - 45+00  
WB-34 29 APR 2014 CUT-D (HB), STA. 2+62 - 72+88  
LOWER SPARKMAN, STA. 3+40 - 4+00  
CUT-C (HB), STA. 325+00 - 341+78  
WB-34 30 APR 2014 CUT-C (HB), STA. 197+00 - 324+00  
WB-34 01 MAY 2014 CUT-C (HB), STA. 153+00 - 195+00  
WB-34 05 MAY 2014 CUT-C (HB), STA. 101+00 - 152+00  
WB-34 06 MAY 2014 CUT-C (HB), STA. 15+00 - 100+00  
WB-34 07 MAY 2014 CUT-C (HB), STA. 0+00 - 14+00
- AIDS TO NAVIGATION WERE LOCATED DURING THIS SURVEY.
- THE INFORMATION DEPICTED ON THIS MAP REPRESENTS THE RESULTS OF SURVEYS MADE ON THE DATES INDICATED ABOVE AND CAN ONLY BE CONSIDERED AS INDICATING THE GENERAL CONDITIONS AT THAT TIME. THIS CHART IS SOLELY FOR THE DISTRIBUTION OF AVAILABLE DEPTHS AT THE TIME OF THE SURVEY AND IS NOT TO BE USED FOR NAVIGATION.
- SURVEY ACCURACY PERFORMANCE STANDARDS, QUALITY CONTROL, AND QUALITY ASSURANCE REQUIREMENTS WERE FOLLOWED DURING THIS SURVEY IN ACCORDANCE WITH USACE EM 1110-2-1003, HYDROGRAPHIC SURVEYING, 30 NOV 13.

SURVEY ZONE	CUTS
4	CUT-F, CUT-G, GADSDEN POINT CUT
5	CUT-J, CUT-J2, CUT-K
6	CUT-A (HB), CUT-C (HB), CUT-D (HB)
7	LOWER & UPPER SPARKMAN, YBOR CH, SEDDON CH, PORT SUTTON CH, PORT SUTTON T.B., PORT SUTTON TERMINAL CH, EAST BAY CH, EAST BAY EXTENSIONS 1 & 2

LEGEND	
	MONUMENT
	LIGHTED BEACON
	GREEN DAYBEACON
	RED DAYBEACON
	RED LIGHTED BUOY
	GREEN LIGHTED BUOY
	CAN BUOY
	NUN BUOY
	TIDE STAFF
	PROJECT DEPTH

US Army Corps of Engineers  
Jacksonville District  
SAFETY ON THIS JOB DEPENDS ON YOU

DESIGNED BY: WRM  
CHECKED BY: GRL  
DATE: 00/00/00

DEPARTMENT OF THE ARMY  
JACKSONVILLE DISTRICT, CORPS OF ENGINEERS  
JACKSONVILLE, FLORIDA

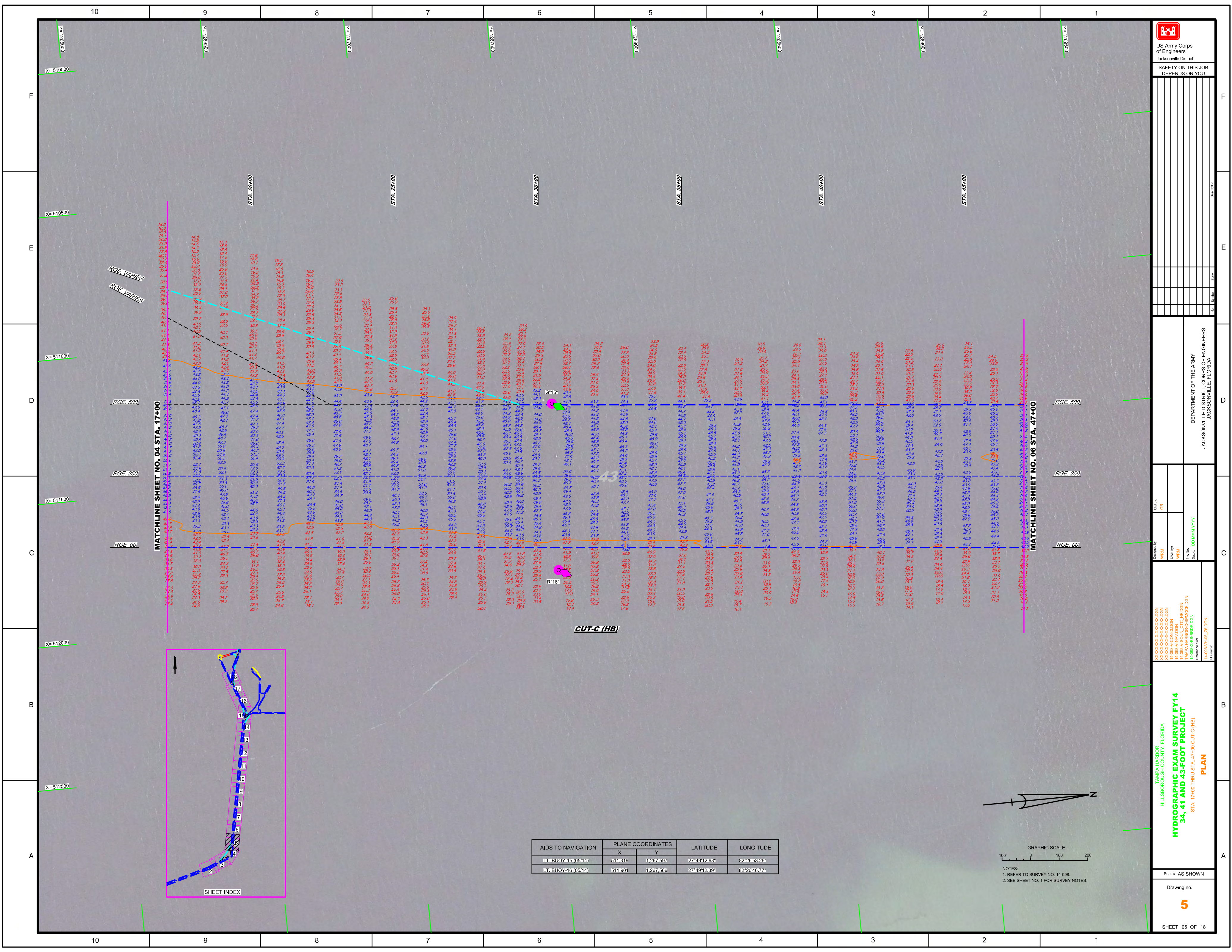
TAMPA HARBOR  
HILLSBOROUGH COUNTY, FLORIDA  
HYDROGRAPHIC EXAM SURVEY FY14  
34, 41 AND 43-FOOT PROJECT  
INDEX, LOCATION AND VICINITY MAP

Scale: AS SHOWN  
Drawing no. 1  
SHEET 01 OF 18





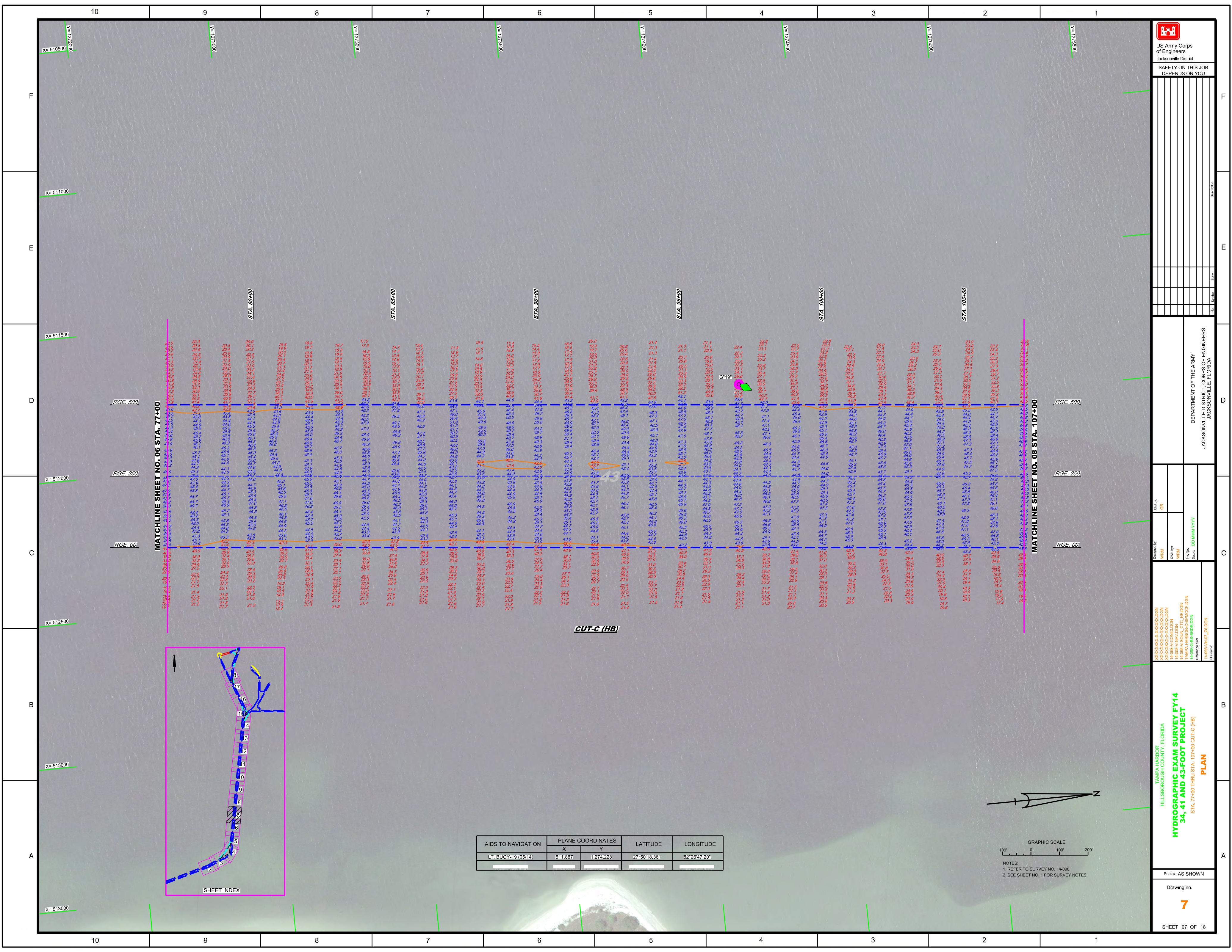




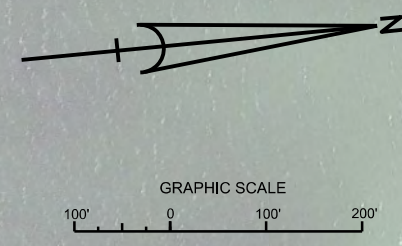
AIDS TO NAVIGATION	PLANE COORDINATES		LATITUDE	LONGITUDE
	X	Y		
LT. BUOY 15 (0514)	511,319	1,267,597	27°49'12.65"	82°26'53.26"
LT. BUOY 16 (0514)	511,801	1,267,566	27°49'12.39"	82°26'46.77"

GRAPHIC SCALE  
0 100 200  
NOTES:  
1. REFER TO SURVEY NO. 14-098.  
2. SEE SHEET NO. 1 FOR SURVEY NOTES.





AIDS TO NAVIGATION	PLANE COORDINATES		LATITUDE	LONGITUDE
	X	Y		
L.B. BUOY-19 (05/14)	511.837	1,274,228	27°50'18.36"	82°26'47.20"

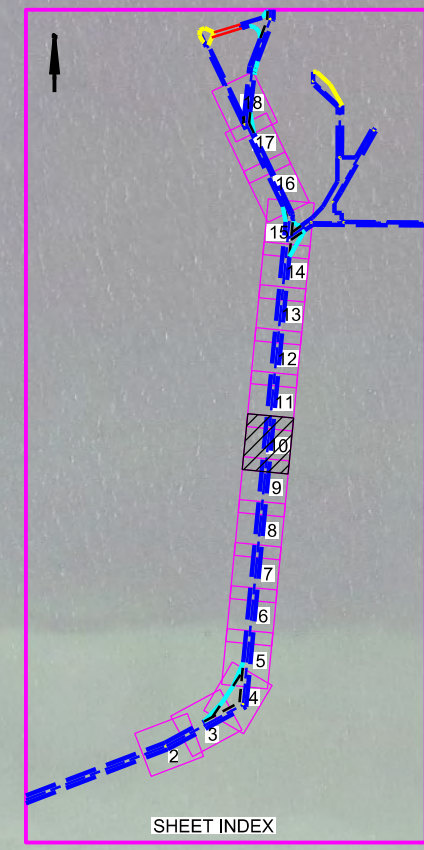
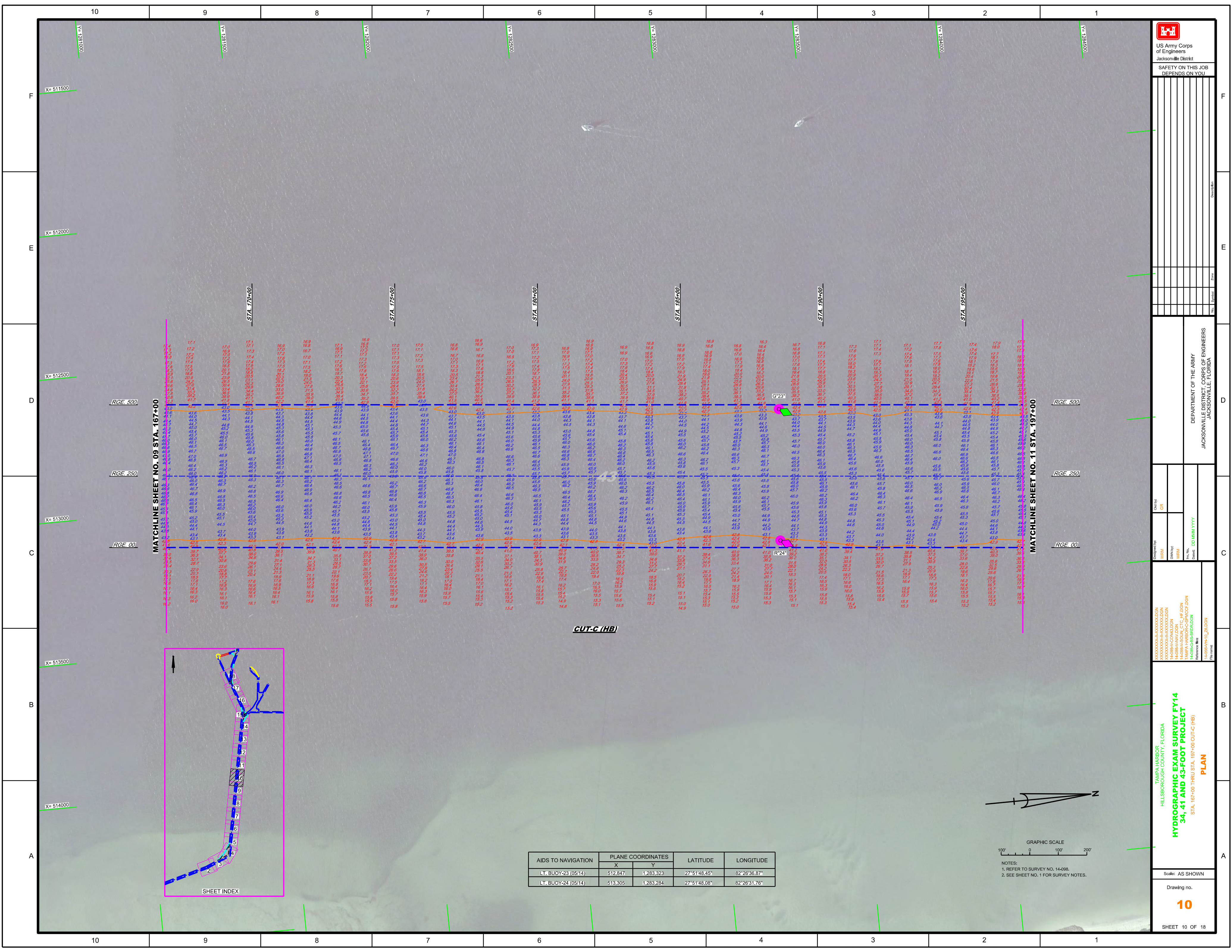


NOTES:  
1. REFER TO SURVEY NO. 14-098.  
2. SEE SHEET NO. 1 FOR SURVEY NOTES.

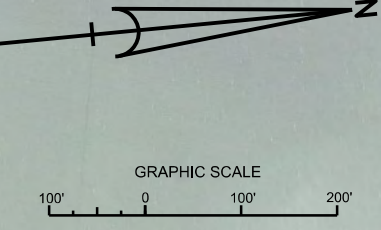




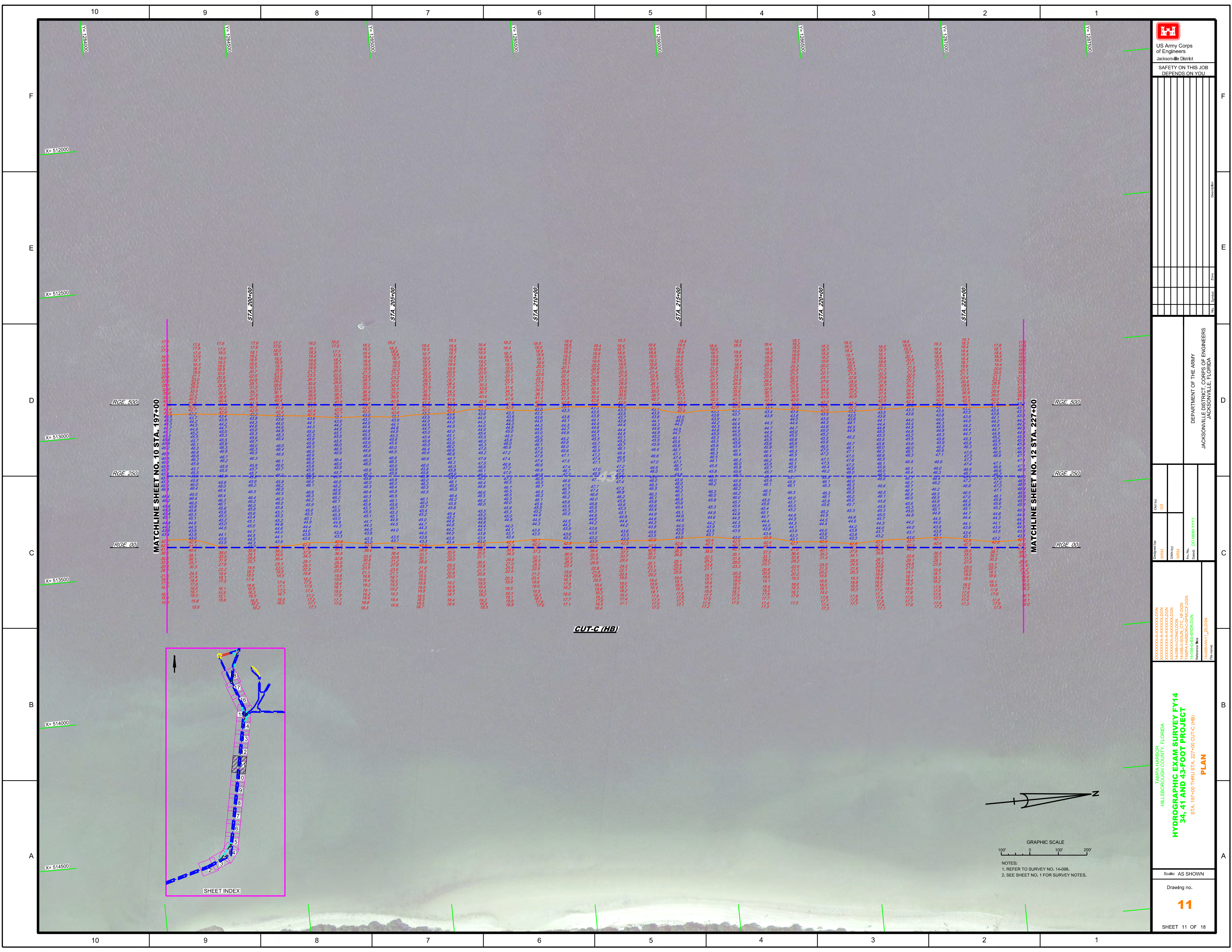




AIDS TO NAVIGATION	PLANE COORDINATES		LATITUDE	LONGITUDE
	X	Y		
LT. BUOY-23 (05/14)	512,847	1,283,323	27°51'48.45"	82°26'36.87"
LT. BUOY-24 (05/14)	513,305	1,283,284	27°51'48.08"	82°26'31.76"



NOTES:  
1. REFER TO SURVEY NO. 14-098.  
2. SEE SHEET NO. 1 FOR SURVEY NOTES.

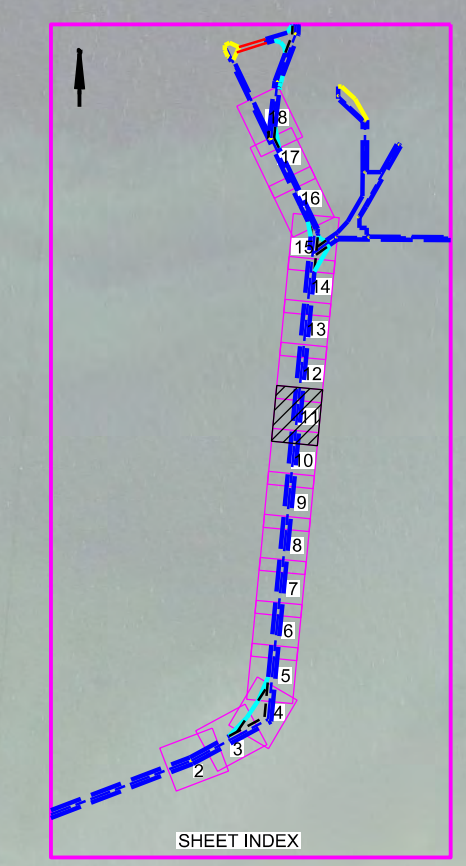


US Army Corps of Engineers
   
 Jacksonville District
   
 SAFETY ON THIS JOB
   
 DEPENDS ON YOU

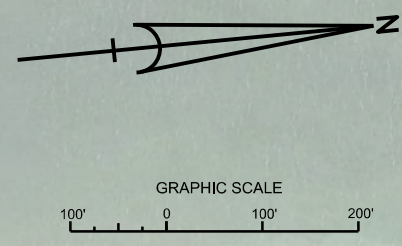
Checked by:	GR
Designed by:	GR
Drawn by:	GR
Field Notes:	DD\MM\YYYY
Checked:	DD\MM\YYYY

TAMPA HARBOR  
 HILLSBOROUGH COUNTY, FLORIDA  
**HYDROGRAPHIC EXAM SURVEY FY14  
 34, 41 AND 43-FOOT PROJECT**  
 STA. 197+00 THRU STA. 227+00 CUT-C (HB)  
**PLAN**

Scale: AS SHOWN  
 Drawing no. **11**  
 SHEET 11 OF 18



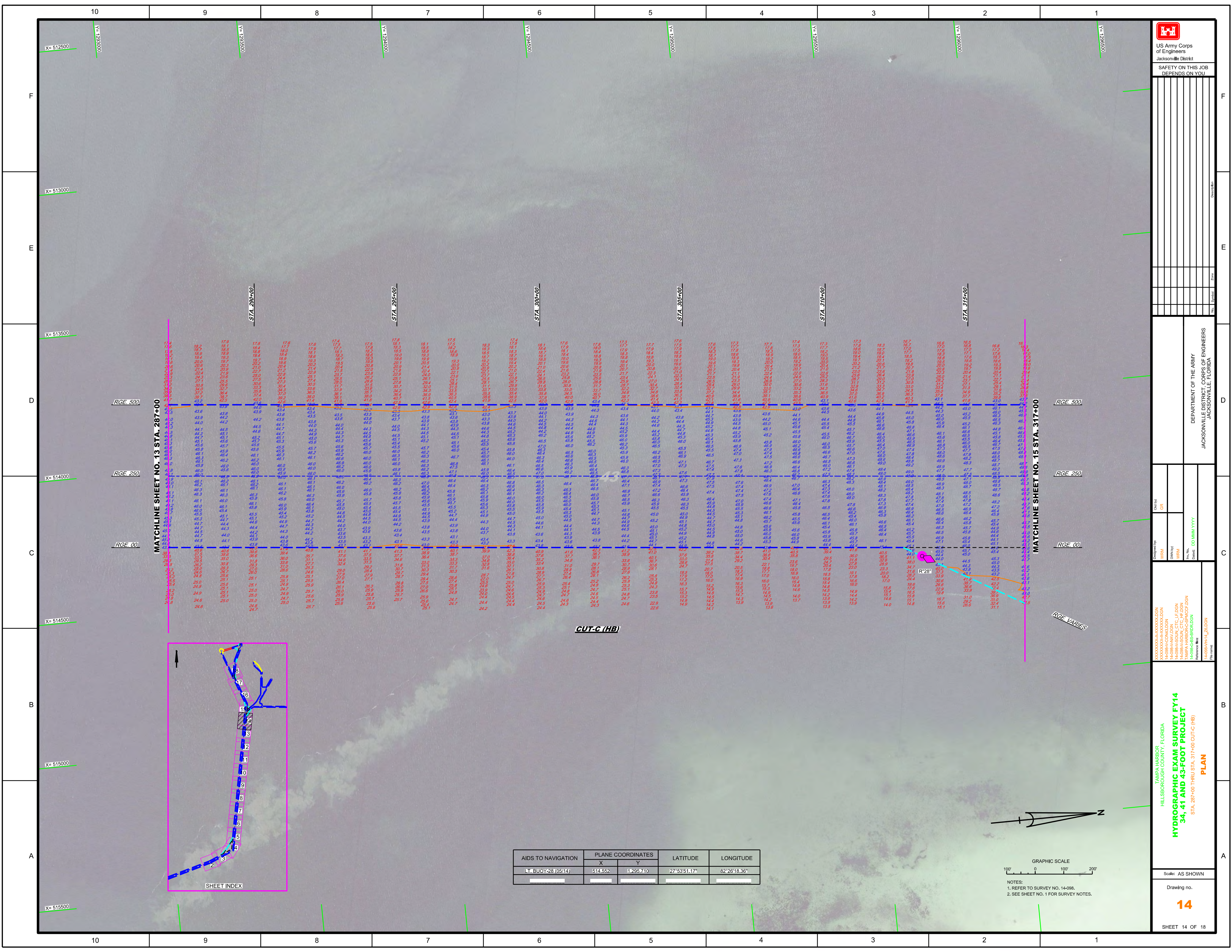
**CUT-C (HB)**



NOTES:  
 1. REFER TO SURVEY NO. 14-098.  
 2. SEE SHEET NO. 1 FOR SURVEY NOTES.







AIDS TO NAVIGATION	PLANE COORDINATES		LATITUDE	LONGITUDE
	X	Y		
L.T. BUOY-28 (05/14)	514,552	1,295,710	27°53'51.17"	82°26'18.36"



NOTES:  
1. REFER TO SURVEY NO. 14-098.  
2. SEE SHEET NO. 1 FOR SURVEY NOTES.









