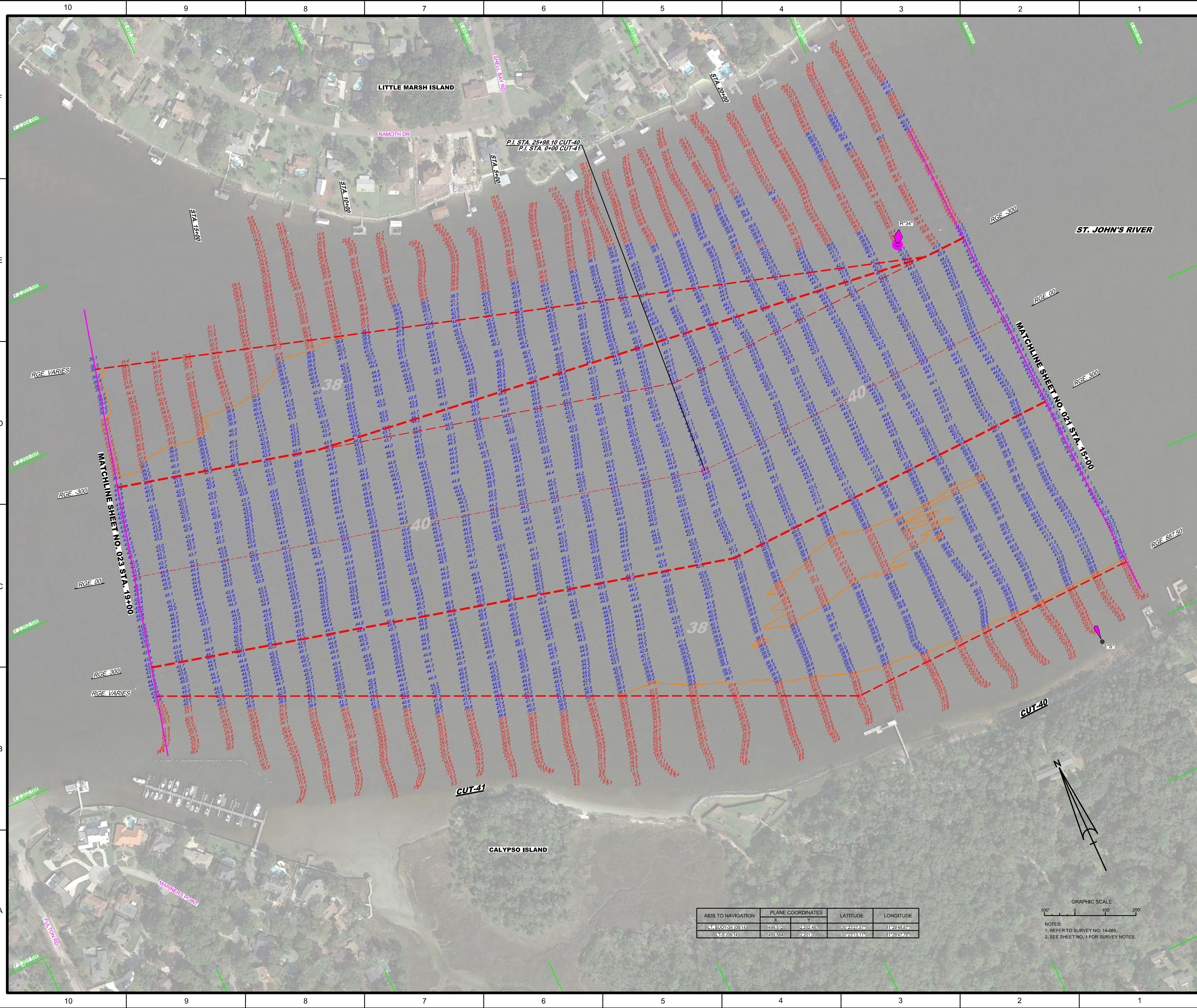


AIDS TO NAVIGATION	PLANE COORDINATES		LATITUDE	LONGITUDE
	X	Y		
LT-31 (06/14)	501411	2201555	30°23'18.60"	81°29'30.37"

GRAPHIC SCALE
 0 100 200
 NOTES:
 1. REFER TO SURVEY NO. 14-086.
 2. SEE SHEET NO. 1 FOR SURVEY NOTES.



Designed by:	WRM
Checked by:	GR
Drawn by:	WRM
Field Notes:	WRM
Date:	AUG 2014

JACKSONVILLE HARBOR, FLORIDA

"BANK TO BANK" EXAMINATION SURVEY FY14

30, 34, 38, 40 & 42-FOOT PROJECT

 STA. 15+00 CUT-40 THRU STA. 19+00 CUT-41

PLAN

AIDS TO NAVIGATION	PLANE COORDINATES		LATITUDE	LONGITUDE
	X	Y		
BUOY 33 (0814)	499,312	2,202,487	33°23'24.67"	81°29'48.67"
LES (0814)	499,634	2,201,000	33°23'43.11"	81°29'47.68"

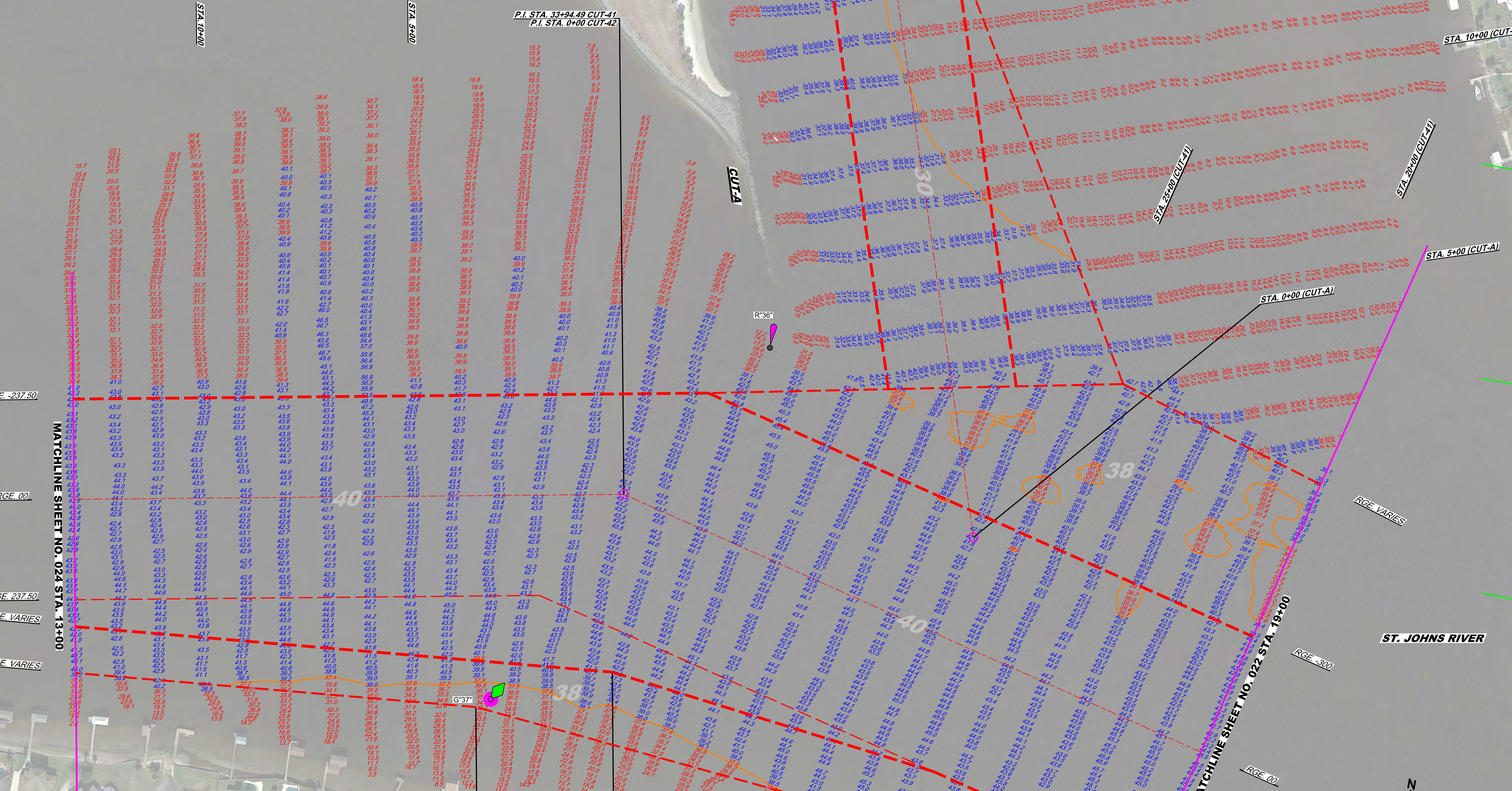


NOTES:

 1. REFER TO SURVEY NO. 14-089.

 2. SEE SHEET NO. 1 FOR SURVEY NOTES.

AIDS TO NAVIGATION	PLANE COORDINATES		LATITUDE	LONGITUDE
	X	Y		
BUOY-35 (0814)	494544	2202200	83°28'24.85"	81°40'22.55"
BUOY-36 (0814)	494544	2203322	83°28'36.96"	81°40'33.24"
BUOY-37 (0814)	494542	2202233	83°28'23.03"	81°40'23.00"



AIDS TO NAVIGATION	PLANE COORDINATES		LATITUDE	LONGITUDE
	X	Y		
BUOY-35 (0814)	494544	2202200	83°28'24.85"	81°40'22.55"
BUOY-36 (0814)	494544	2203322	83°28'36.96"	81°40'33.24"
BUOY-37 (0814)	494542	2202233	83°28'23.03"	81°40'23.00"

US Army Corps of Engineers
Jacksonville District
SAFETY ON THIS JOB
DEPENDS ON YOU

DEPARTMENT OF THE ARMY
JACKSONVILLE DISTRICT, CORPS OF ENGINEERS
JACKSONVILLE, FLORIDA

Checked By:	GRL	Designed By:	1408BA-VAN/DGN
Drawn By:	WRM	Checked By:	1408BA-VAN/DGN
Insp. By:	WRM	Checked By:	1408BA-VAN/DGN
Date:	AUG 2014	Checked By:	1408BA-VAN/DGN

"BANK TO BANK" EXAMINATION SURVEY FY14
30, 34, 38, 40 & 42-FOOT PROJECT
STA. 18+00 CUT-41 THRU STA 13+00 CUT-42 &
STA. 0+00 THRU STA. 14+00 CUT-A

PLAN

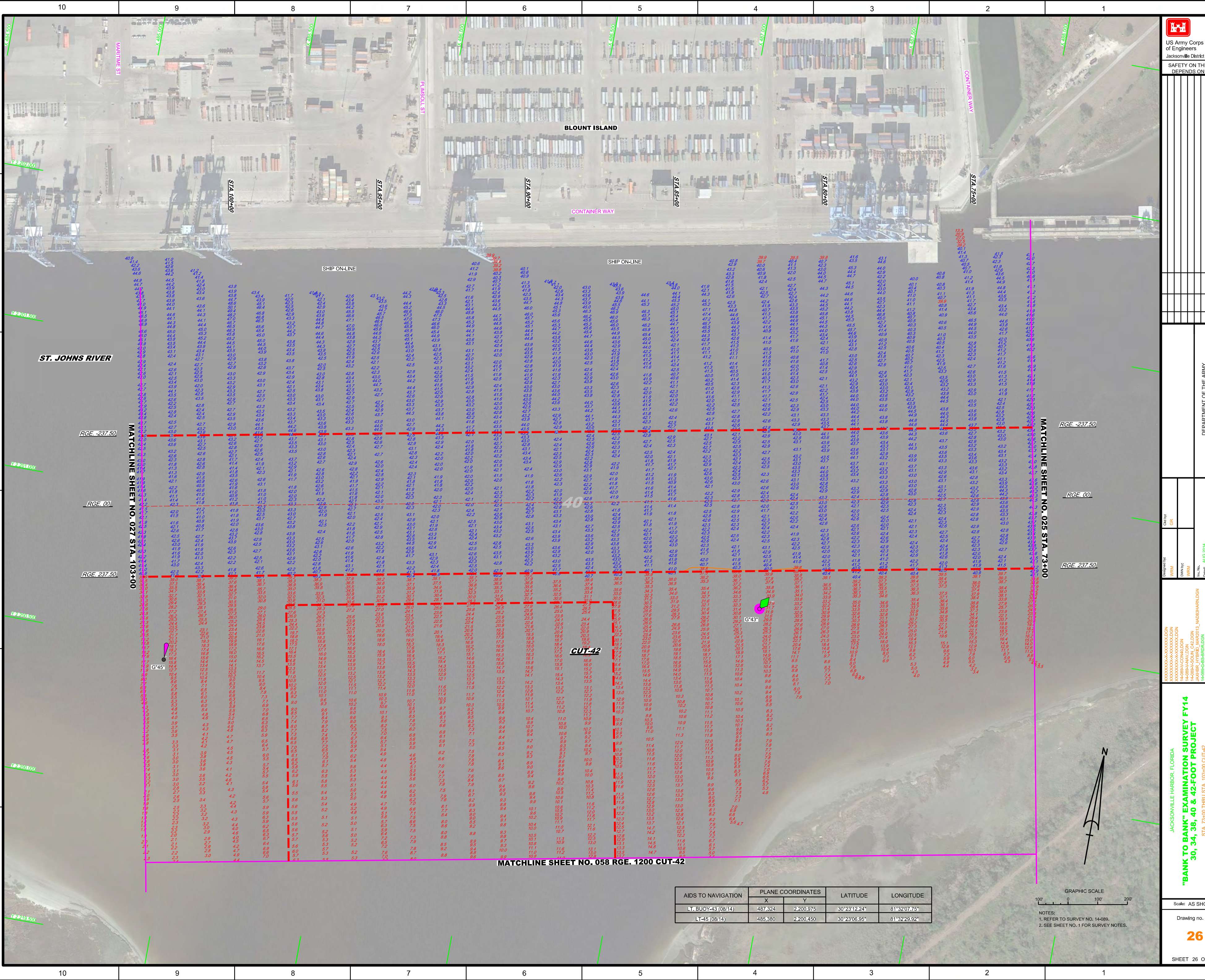
Scale: AS SHOWN

Drawing no. **23**

SHEET 23 OF 74

GRAPHIC SCALE
100' 0 100' 200'

NOTES:
1. REFER TO SURVEY NO. 14-089.
2. SEE SHEET NO. 1 FOR SURVEY NOTES.



1	2	3	4	5	6	7	8	9	10
11	12	13	14	15	16	17	18	19	20
21	22	23	24	25	26	27	28	29	30
31	32	33	34	35	36	37	38	39	40
41	42	43	44	45	46	47	48	49	50
51	52	53	54	55	56	57	58	59	60
61	62	63	64	65	66	67	68	69	70
71	72	73	74	75	76	77	78	79	80
81	82	83	84	85	86	87	88	89	90
91	92	93	94	95	96	97	98	99	100

DEPARTMENT OF THE ARMY
JACKSONVILLE DISTRICT, FLORIDA

Matchline information:
 MATCHLINE SHEET NO. 025 STA. 73+00
 MATCHLINE SHEET NO. 058 RGE. 1200 CUT-42

**"BANK TO BANK" EXAMINATION SURVEY FY14
30, 34, 38, 40 & 42-FOOT PROJECT**

STA. 73+00 THRU STA. 103+00 CUT-42

PLAN

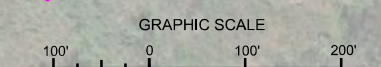
JACKSONVILLE HARBOR, FLORIDA

Scale: AS SHOWN

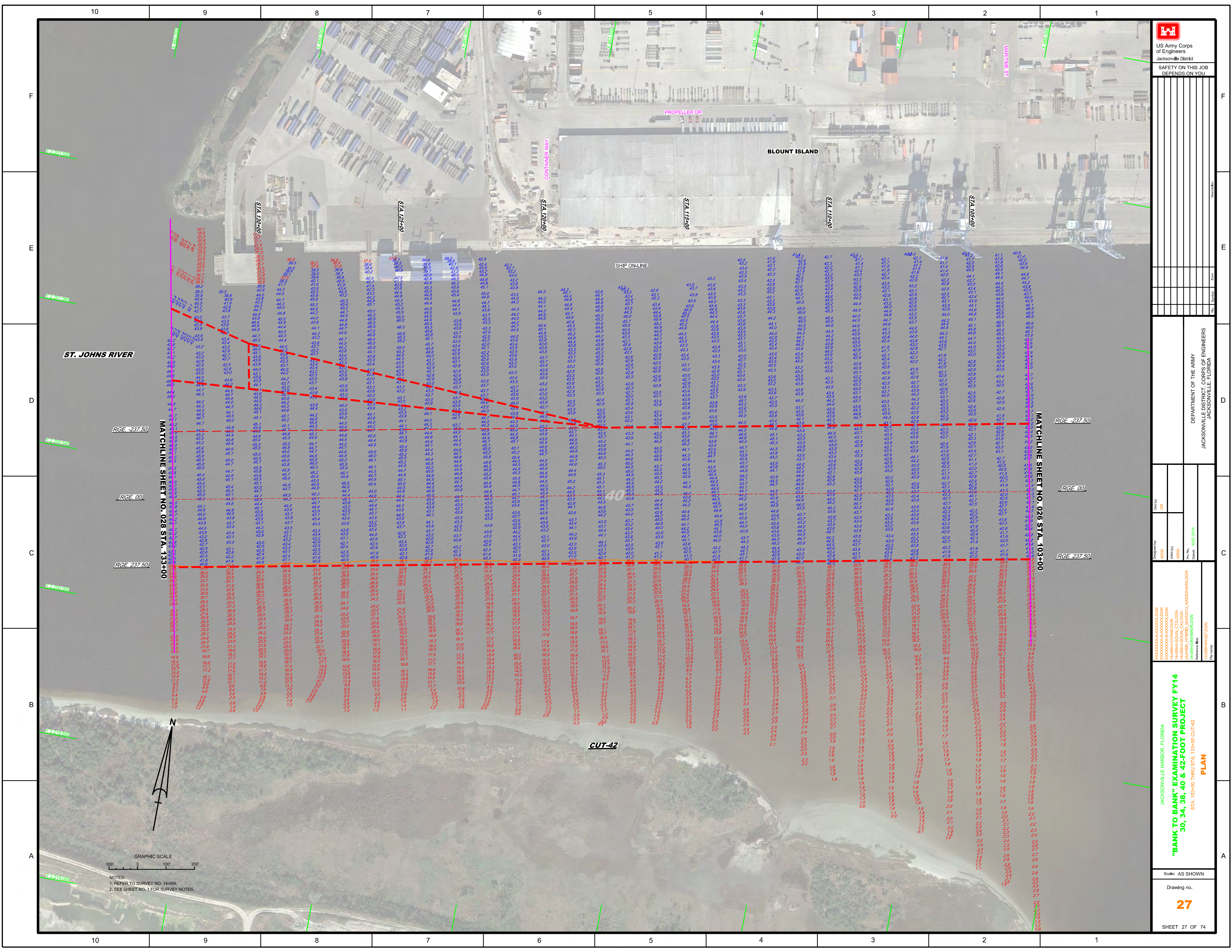
Drawing No. **26**

SHEET 26 OF 74

AIDS TO NAVIGATION	PLANE COORDINATES		LATITUDE	LONGITUDE
	X	Y		
LT. BUOY-43 (08/14)	487,324	2,200,975	30°23'12.24"	81°32'07.75"
LT-45 (08/14)	485,380	2,200,450	30°23'06.95"	81°32'29.92"

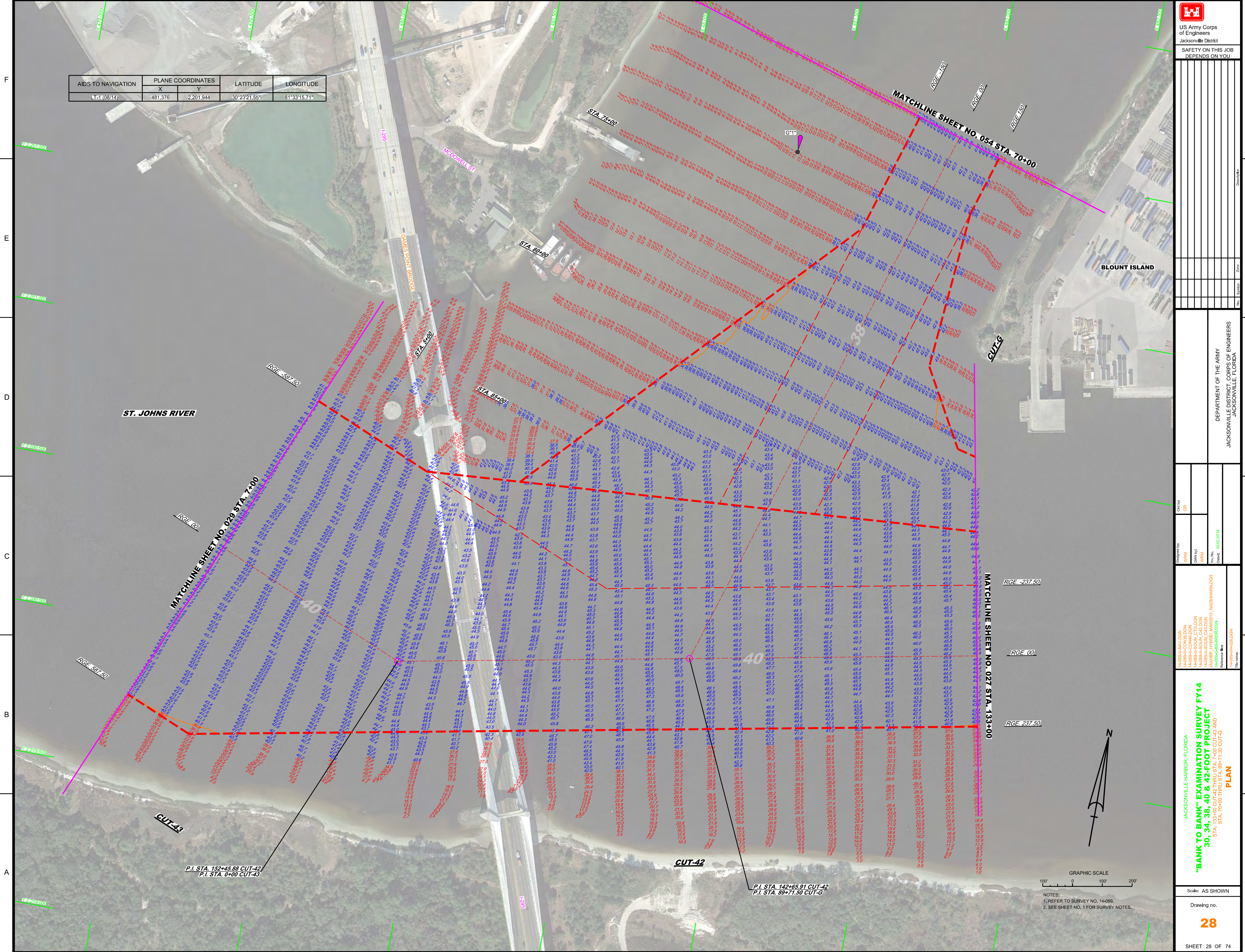


NOTES:
1. REFER TO SURVEY NO. 14-089.
2. SEE SHEET NO. 1 FOR SURVEY NOTES.



NOTES:
1. REFER TO SURVEY NO. 14-089.
2. SEE SHEET NO. 1 FOR SURVEY NOTES.

AIDS TO NAVIGATION	PLANE COORDINATES		LATITUDE	LONGITUDE
	X	Y		
LT-1 (08/14)	481,376	2,201,944	30°23'21.55"	81°33'15.71"



US Army Corps of Engineers
Jacksonville District
SAFETY ON THIS JOB DEPENDS ON YOU

Checked By:	GR
Designed By:	WRM
DRAWN BY:	WRM
In Charge:	WRM
Date:	AUG 2014

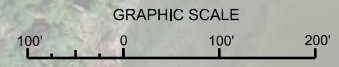
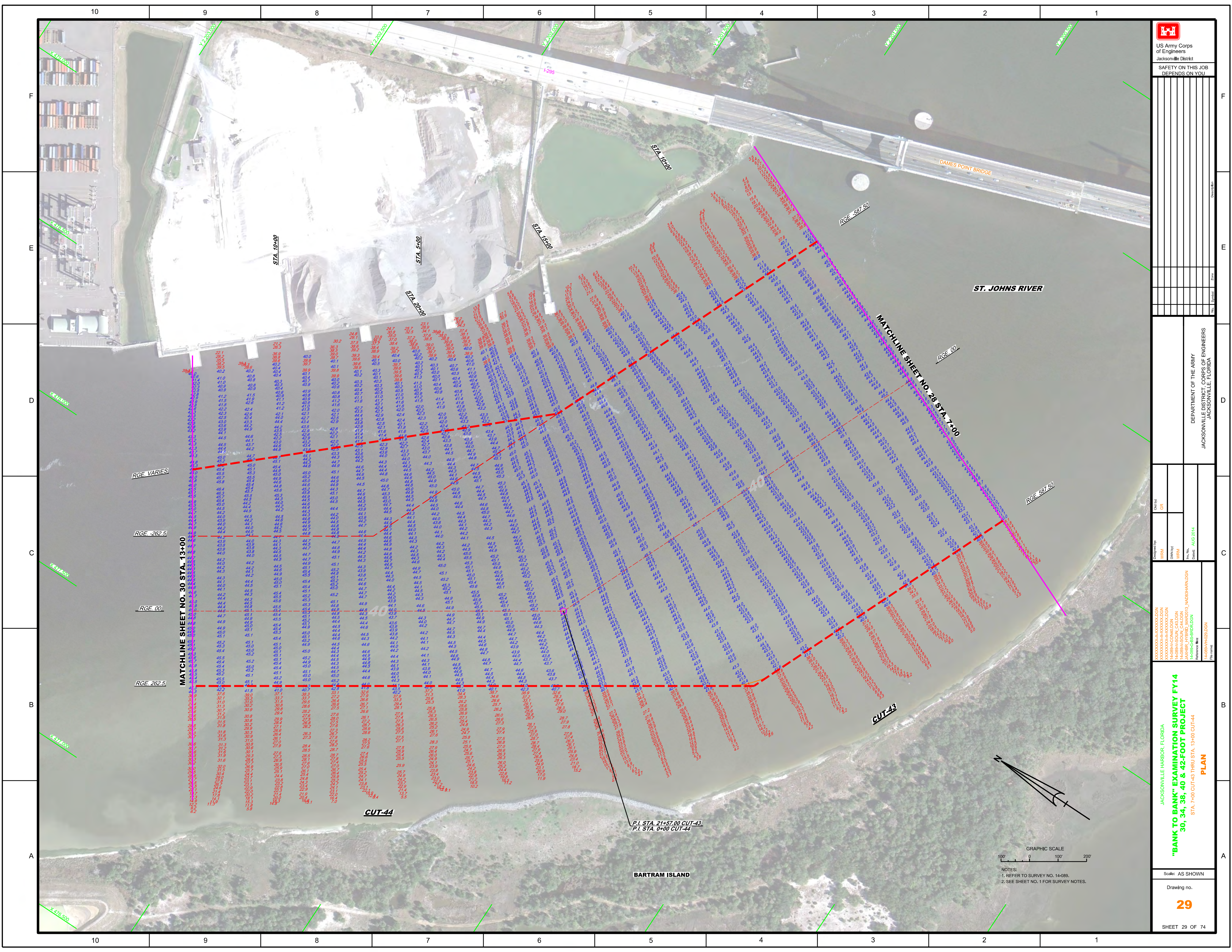
DEPARTMENT OF THE ARMY
JACKSONVILLE DISTRICT, CORPS OF ENGINEERS
JACKSONVILLE, FLORIDA

JACKSONVILLE HARBOR, FLORIDA
"BANK TO BANK" EXAMINATION SURVEY FY14
30, 34, 38, 40 & 42-FOOT PROJECT
STA. 133+00 CUT-42 THRU STA. 7+00 CUT-43 AND
STA. 70+00 THRU STA. 89+71.50 CUT-G
PLAN

Scale: AS SHOWN



NOTES:
1. REFER TO SURVEY NO. 14-089.
2. SEE SHEET NO. 1 FOR SURVEY NOTES.



NOTES:
1. REFER TO SURVEY NO. 14-089.
2. SEE SHEET NO. 1 FOR SURVEY NOTES.

P.I. STA. 21+57.00 CUT-43
P.I. STA. 0+00 CUT-44

BARTRAM ISLAND

ST. JOHNS RIVER

DAMES POINT BRIDGE

MATCHLINE SHEET NO. 28 STA. 7+00

MATCHLINE SHEET NO. 30 STA. 13+00

RGE VARIES

RGE -262.5

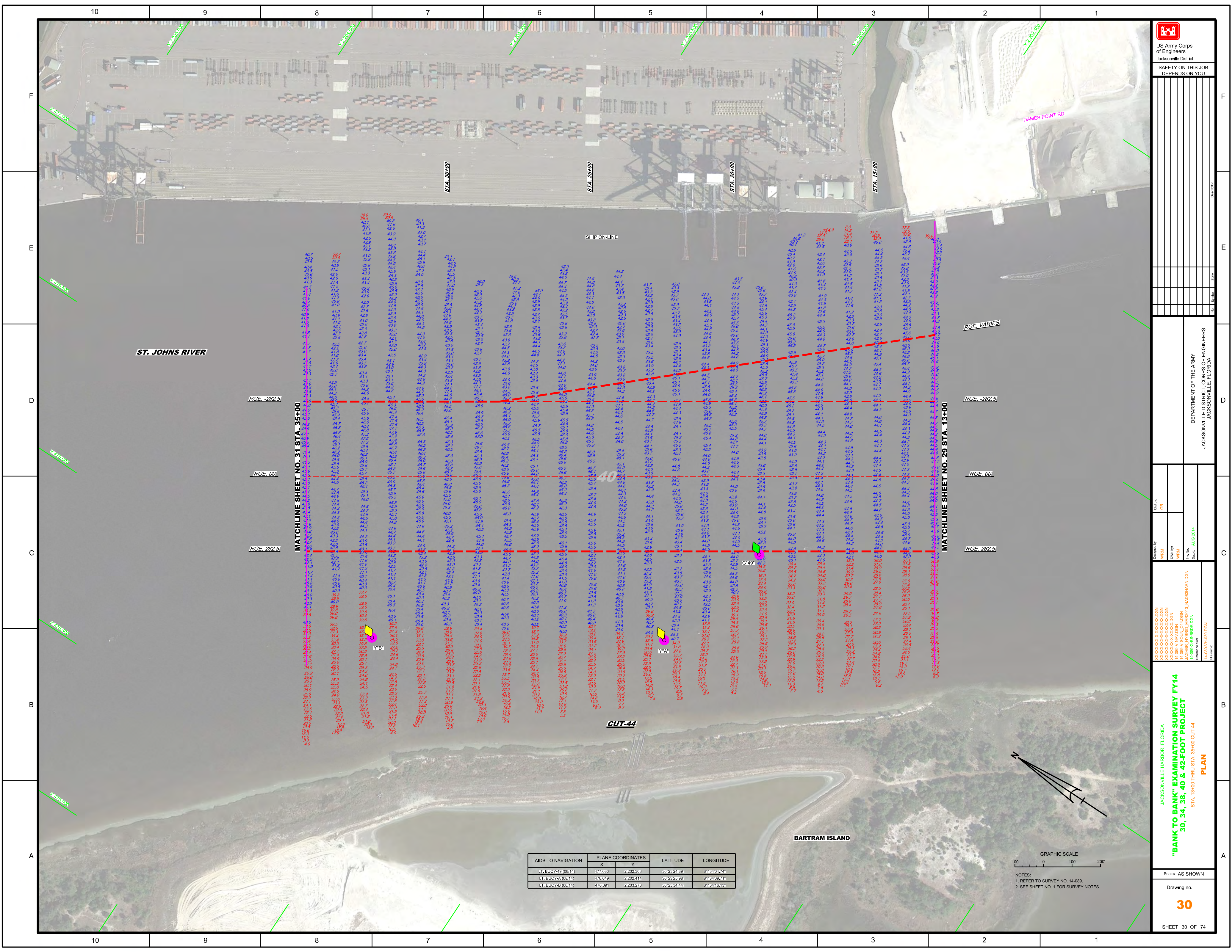
RGE 0.0

RGE 262.5

CUT-44

CUT-43





US Army Corps of Engineers

 Jacksonville District

SAFETY ON THIS JOB

 DEPENDS ON YOU

Department of the Army

 Jacksonville District, Corps of Engineers

 Jacksonville, Florida

Drawn by: GRL

 Checked by: GRL

 Design: WRM

 Date: AUG 2014

JACKSONVILLE HARBOR, FLORIDA

"BANK TO BANK" EXAMINATION SURVEY FY14

30, 34, 38, 40 & 42-FOOT PROJECT

 STA. 13+00 THRU STA. 35+00 CUT-44

PLAN

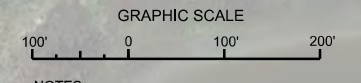
 Scale: AS SHOWN

 Drawing no.

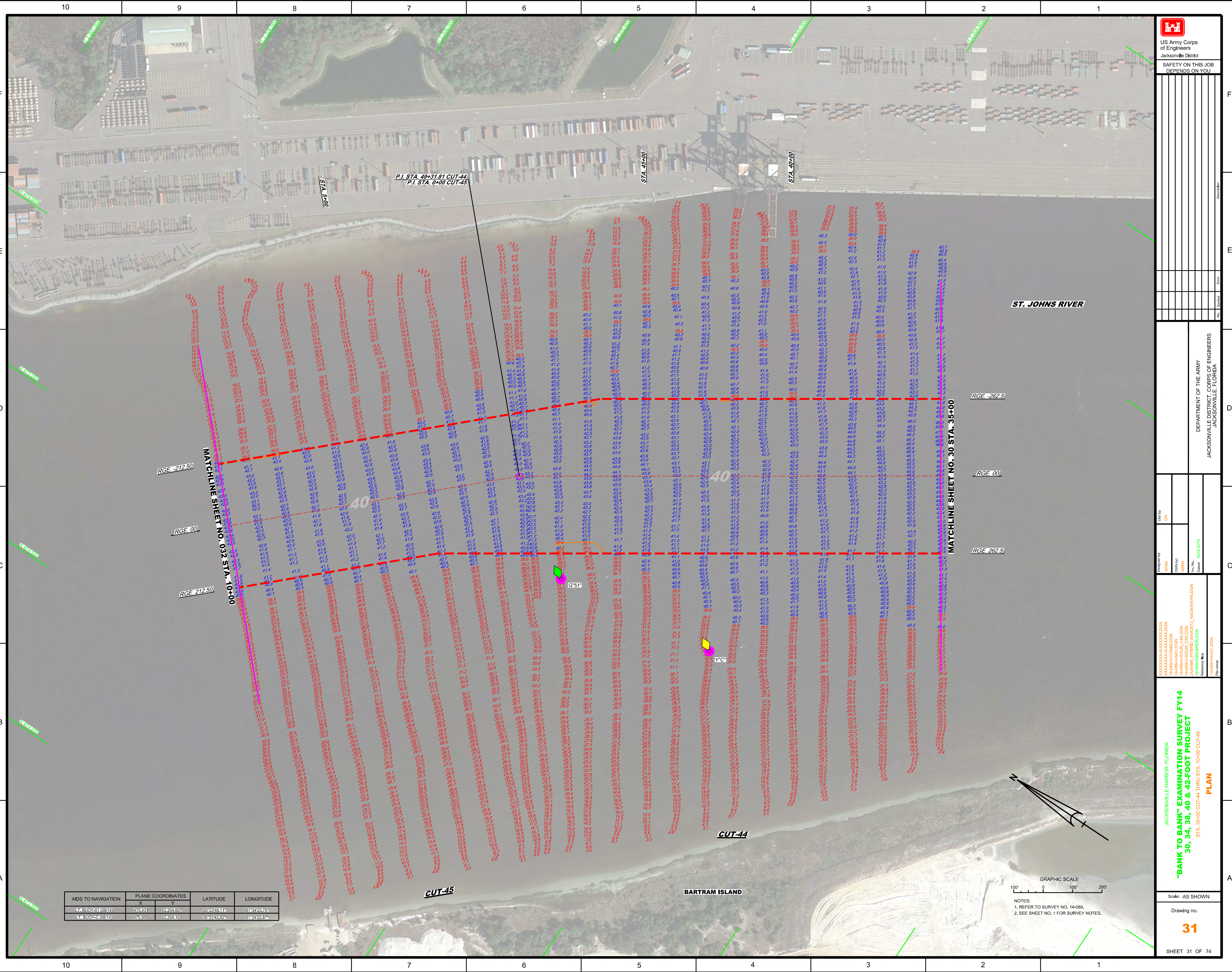
30

 SHEET 30 OF 74

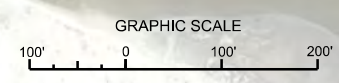
AIDS TO NAVIGATION	PLANE COORDINATES		LATITUDE	LONGITUDE
	X	Y		
LT. BUOY-49 (08/14)	477.083	2,202.303	30°23'24.89"	81°34'04.74"
LT. BUOY-A (08/14)	476.649	2,202.414	30°23'25.98"	81°34'09.71"
LT. BUOY-B (08/14)	476.091	2,203.273	30°23'34.44"	81°34'16.13"



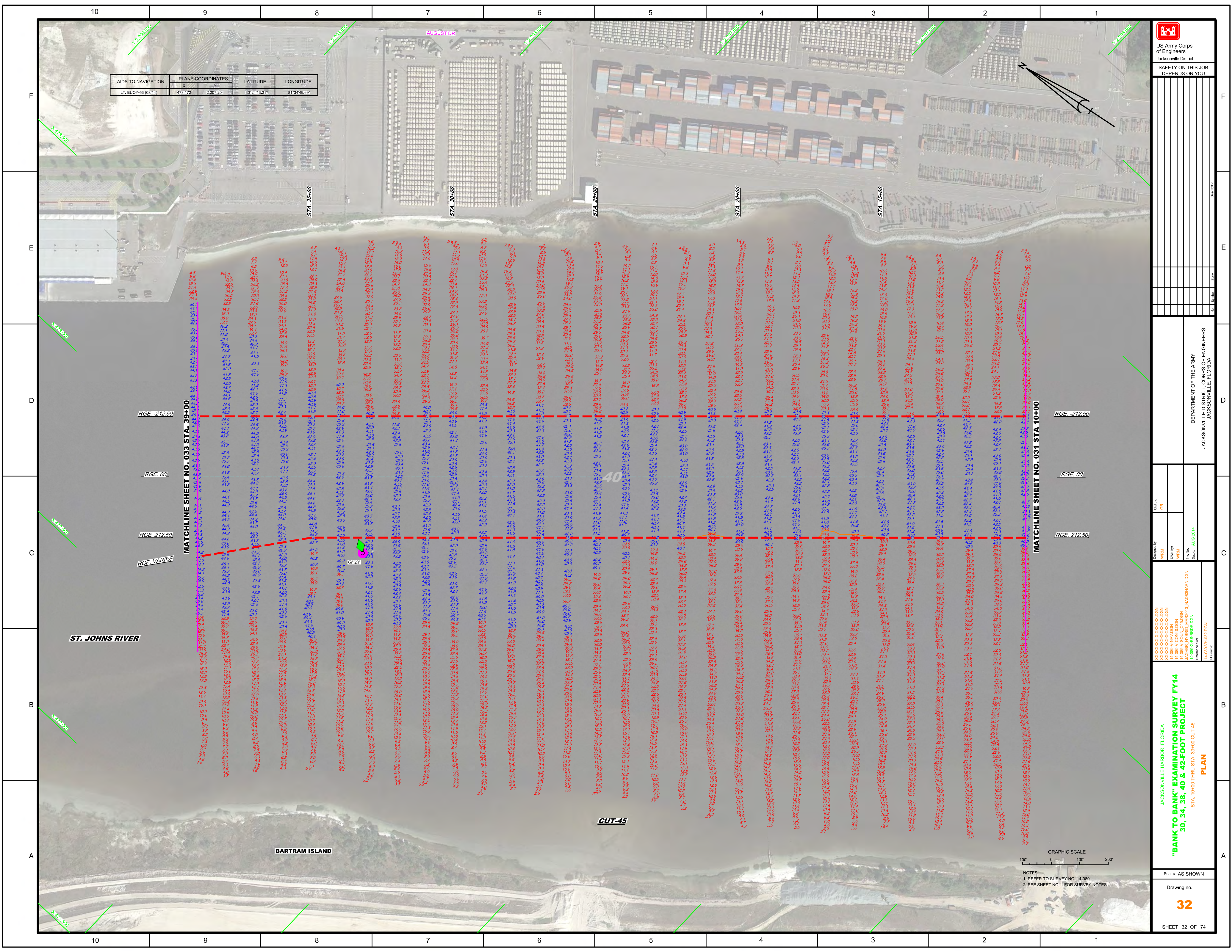
NOTES:
 1. REFER TO SURVEY NO. 14-089.
 2. SEE SHEET NO. 1 FOR SURVEY NOTES.



AIDS TO NAVIGATION	PLANE COORDINATES		LATITUDE	LONGITUDE
	X	Y		
LT BUOY-51(08/14)	476.431	2204.657	30°23'48.11"	81°34'22.75"
LT BUOY-C(08/14)	476.505	2204.102	30°23'42.62"	81°34'22.87"



NOTES:
 1. REFER TO SURVEY NO. 14-089.
 2. SEE SHEET NO. 1 FOR SURVEY NOTES.



AIDS TO NAVIGATION	PLANE COORDINATES		LATITUDE	LONGITUDE
	X	Y		
LT. BUOY-63 (08/14)	473.172	2.207.204	30°24'13.21"	81°34'48.69"

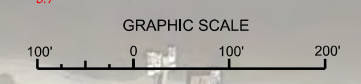
US Army Corps of Engineers
Jacksonville District
SAFETY ON THIS JOB
DEPENDS ON YOU

DEPARTMENT OF THE ARMY
JACKSONVILLE DISTRICT CORPS OF ENGINEERS
JACKSONVILLE, FLORIDA

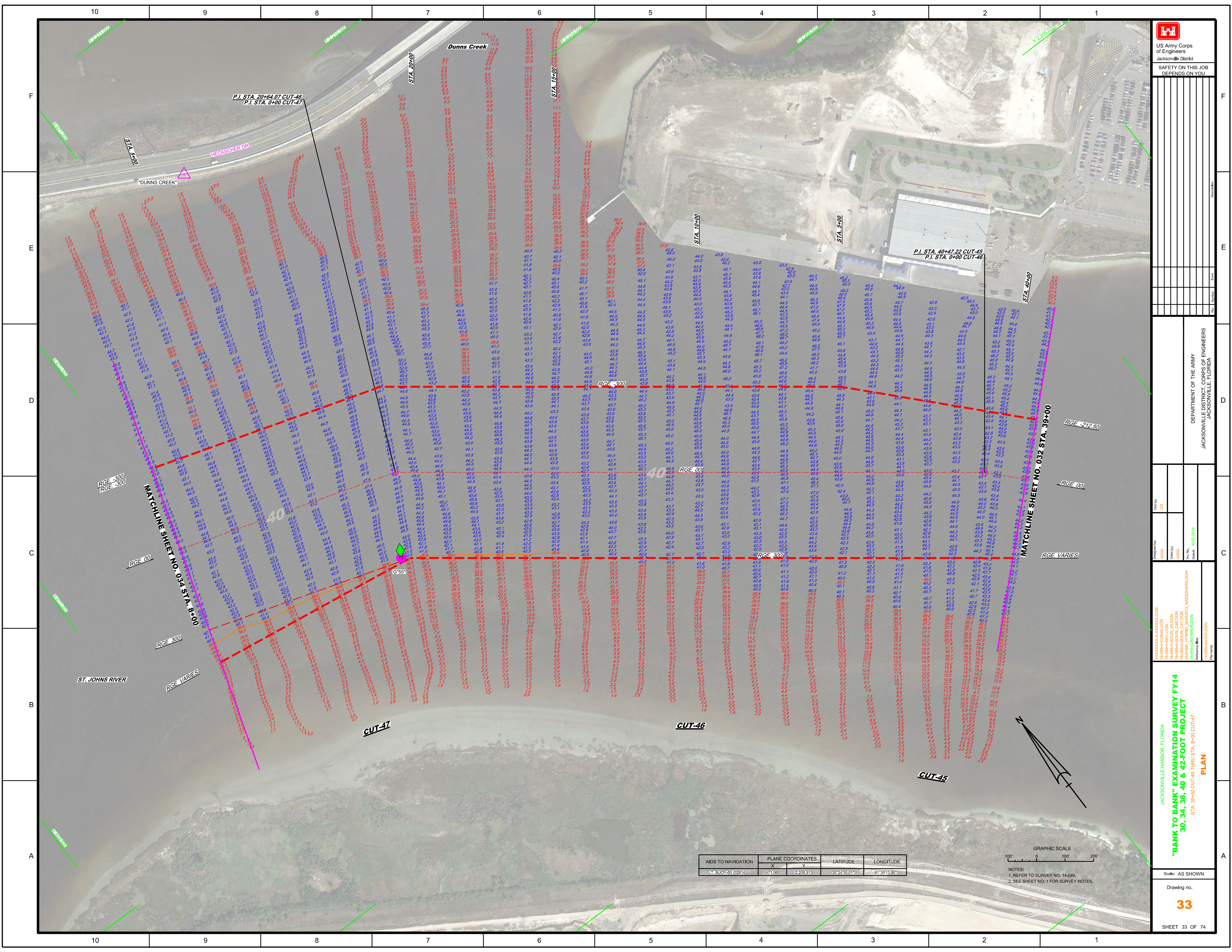
Designed by: **WRM**
Checked by: **WRM**
Drawn by: **WRM**
In Charge: **WRM**
Date: **AUG 2014**

"BANK TO BANK" EXAMINATION SURVEY FY14
30, 34, 38, 40 & 42-FOOT PROJECT
STA. 10+00 THRU STA. 39+00 CUT-45
PLAN

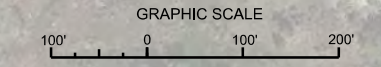
JACKSONVILLE HARBOR, FLORIDA
Scale: AS SHOWN
Drawing No. **32**
SHEET 32 OF 74



NOTES:
1. REFER TO SURVEY NO. 14-088.
2. SEE SHEET NO. 1 FOR SURVEY NOTES.



AIDS TO NAVIGATION	PLANE COORDINATES		LATITUDE	LONGITUDE
	X	Y		
L1 BUOY-55 (02814)	471.050	2208.913	30°24'30.01"	81°35'13.30"



NOTES:
1. REFER TO SURVEY NO. 14-089.
2. SEE SHEET NO. 1 FOR SURVEY NOTES.