

AIDS TO NAVIGATION	PLANE COORDINATES		LATITUDE	LONGITUDE
	X	Y		
LT. BUOY-11 (08/14)	524.301	2,206.291	30°24'06.40"	81°25'05.80"



NOTES:  
1. REFER TO SURVEY NO. 14-089.  
2. SEE SHEET NO. 1 FOR SURVEY NOTES.

US Army Corps of Engineers  
Jacksonville District  
SAFETY ON THIS JOB  
DEPENDS ON YOU

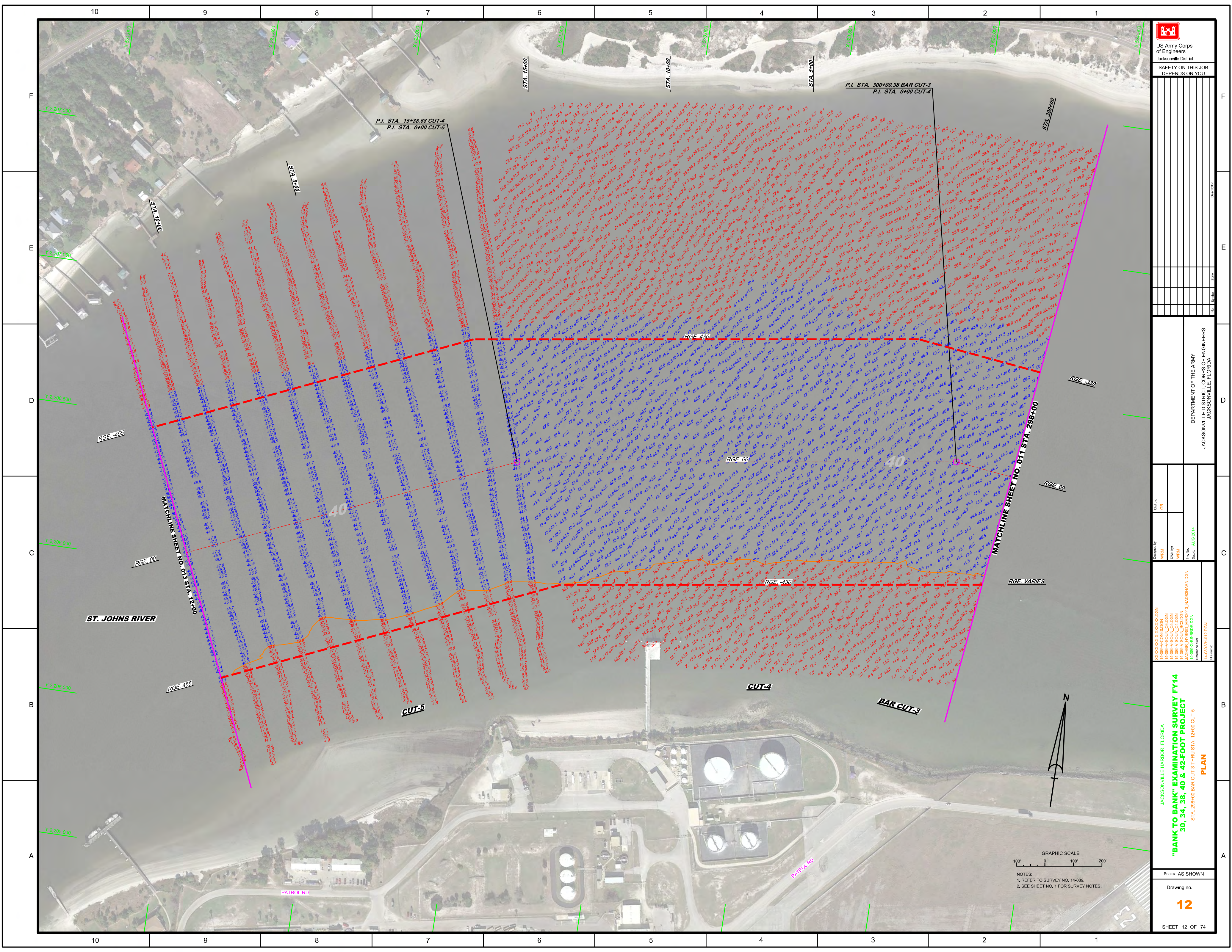
DESIGNED BY: WRM  
CHECKED BY: GRL  
DATE: AUG 2014

JACKSONVILLE HARBOR, FLORIDA  
"BANK TO BANK" EXAMINATION SURVEY FY14  
30, 34, 38, 40 & 42-FOOT PROJECT  
PLAN

Scale: AS SHOWN  
Drawing No. 11  
SHEET 11 OF 74

DEPARTMENT OF THE ARMY  
JACKSONVILLE DISTRICT, CORPS OF ENGINEERS  
JACKSONVILLE, FLORIDA





**US Army Corps of Engineers**  
Jacksonville District

SAFETY ON THIS JOB  
DEPENDS ON YOU

Checked by:	GR
Designed by:	WRM
Drawn by:	WRM
Scale:	AS SHOWN
Date:	AUG 2014

DEPARTMENT OF THE ARMY  
JACKSONVILLE DISTRICT, CORPS OF ENGINEERS  
JACKSONVILLE, FLORIDA

JACKSONVILLE HARBOR, FLORIDA

**"BANK TO BANK" EXAMINATION SURVEY FY14**  
30, 34, 38, 40 & 42-FOOT PROJECT

STA. 298+00 BAR CUT-3 THRU STA. 12+00 CUT-5

**PLAN**

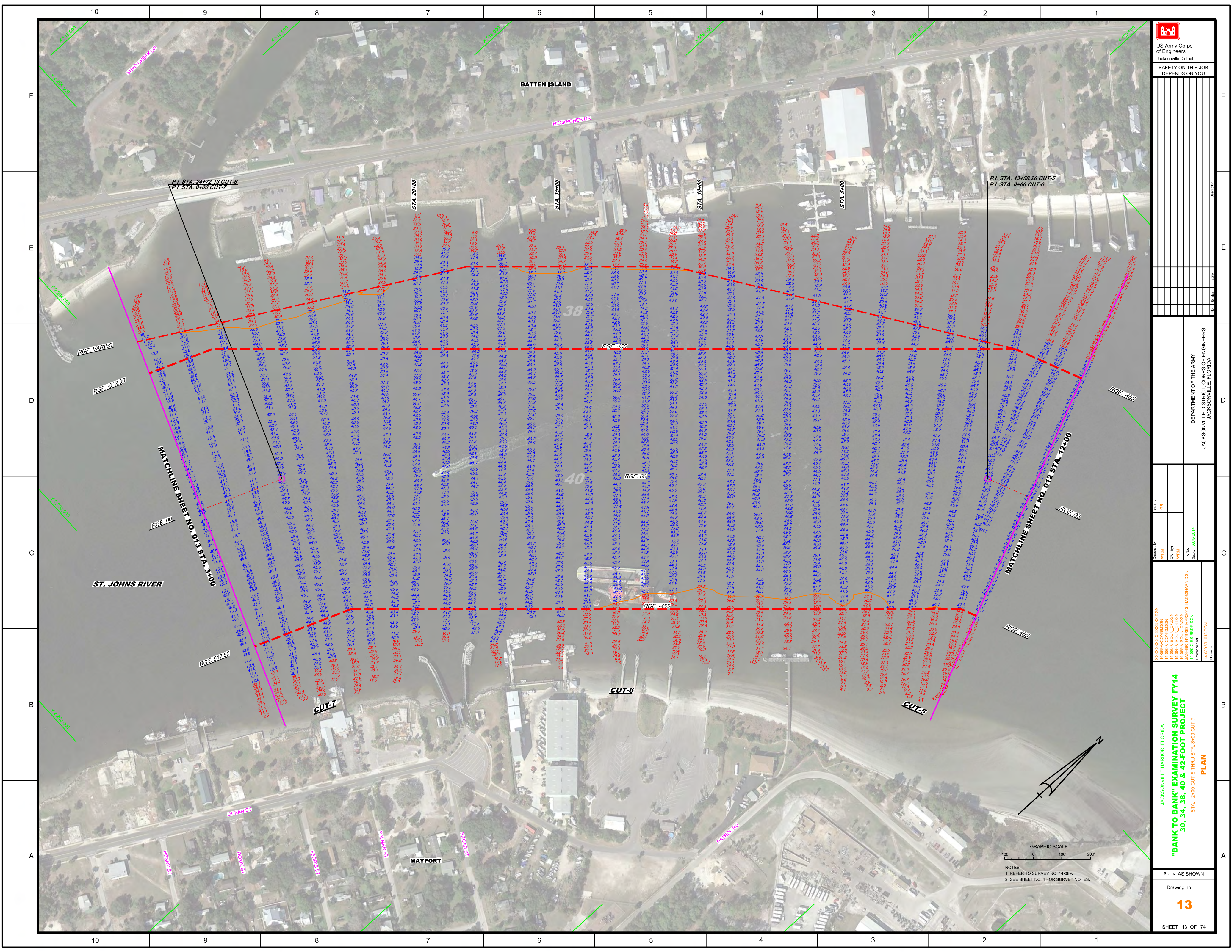
Scale: AS SHOWN


Drawing no. **12**

SHEET 12 OF 74

NOTES:  
1. REFER TO SURVEY NO. 14-089.  
2. SEE SHEET NO. 1 FOR SURVEY NOTES.






  
 US Army Corps of Engineers
   
 Jacksonville District
   
 SAFETY ON THIS JOB
   
 DEPENDS ON YOU

DEPARTMENT OF THE ARMY
   
 JACKSONVILLE DISTRICT CORPS OF ENGINEERS
   
 JACKSONVILLE, FLORIDA

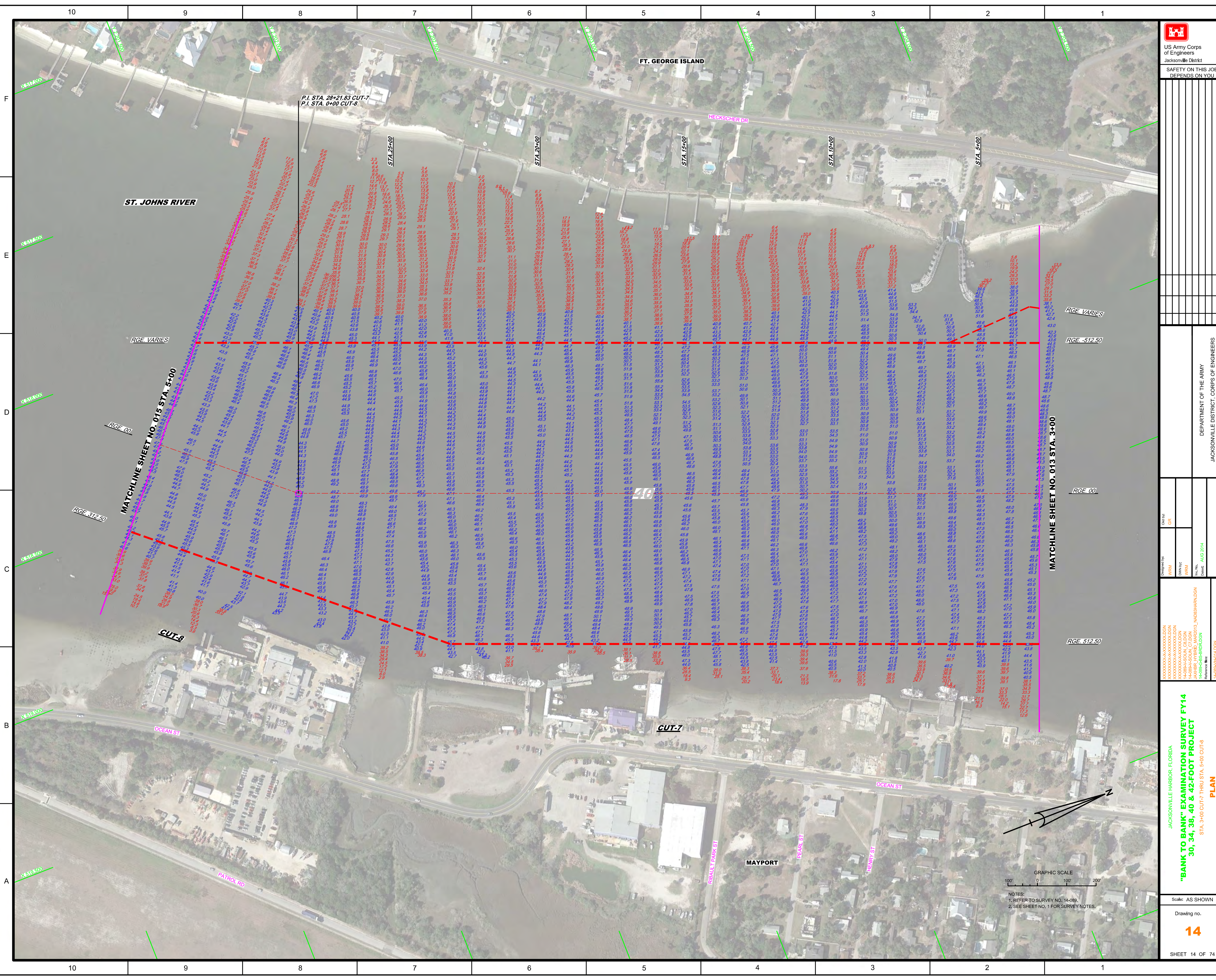
Project No: 14088
   
 Drawing No: 13
   
 Scale: AS SHOWN


**"BANK TO BANK" EXAMINATION SURVEY FY14**
  
**30, 34, 38, 40 & 42-FOOT PROJECT**
  
 STA. 12+00 CUT-5 THRU STA. 3+00 CUT-7
   
**PLAN**
  
 SHEET 13 OF 74

GRAPHIC SCALE
   
 100' 0 100' 200'
   
 NOTES:
   
 1. REFER TO SURVEY NO. 14-088.
   
 2. SEE SHEET NO. 1 FOR SURVEY NOTES.









US Army Corps of Engineers  
Jacksonville District

SAFETY ON THIS JOB  
DEPENDS ON YOU

---

DESIGNED BY: [Redacted]  
 CHECKED BY: [Redacted]  
 DRAWN BY: [Redacted]  
 DATE: AUG 2014

PROJECT: "BANK TO BANK" EXAMINATION SURVEY FY14  
 STA. 3+00 CUT-7 THRU STA. 5+00 CUT-8  
 PLAN

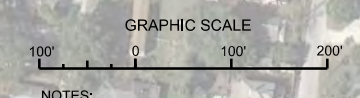
JACKSONVILLE HARBOR, FLORIDA

DEPARTMENT OF THE ARMY  
 JACKSONVILLE DISTRICT, CORPS OF ENGINEERS  
 JACKSONVILLE, FLORIDA

Scale: AS SHOWN

Drawing No. **14**

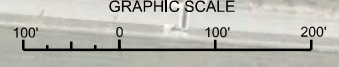
SHEET 14 OF 74



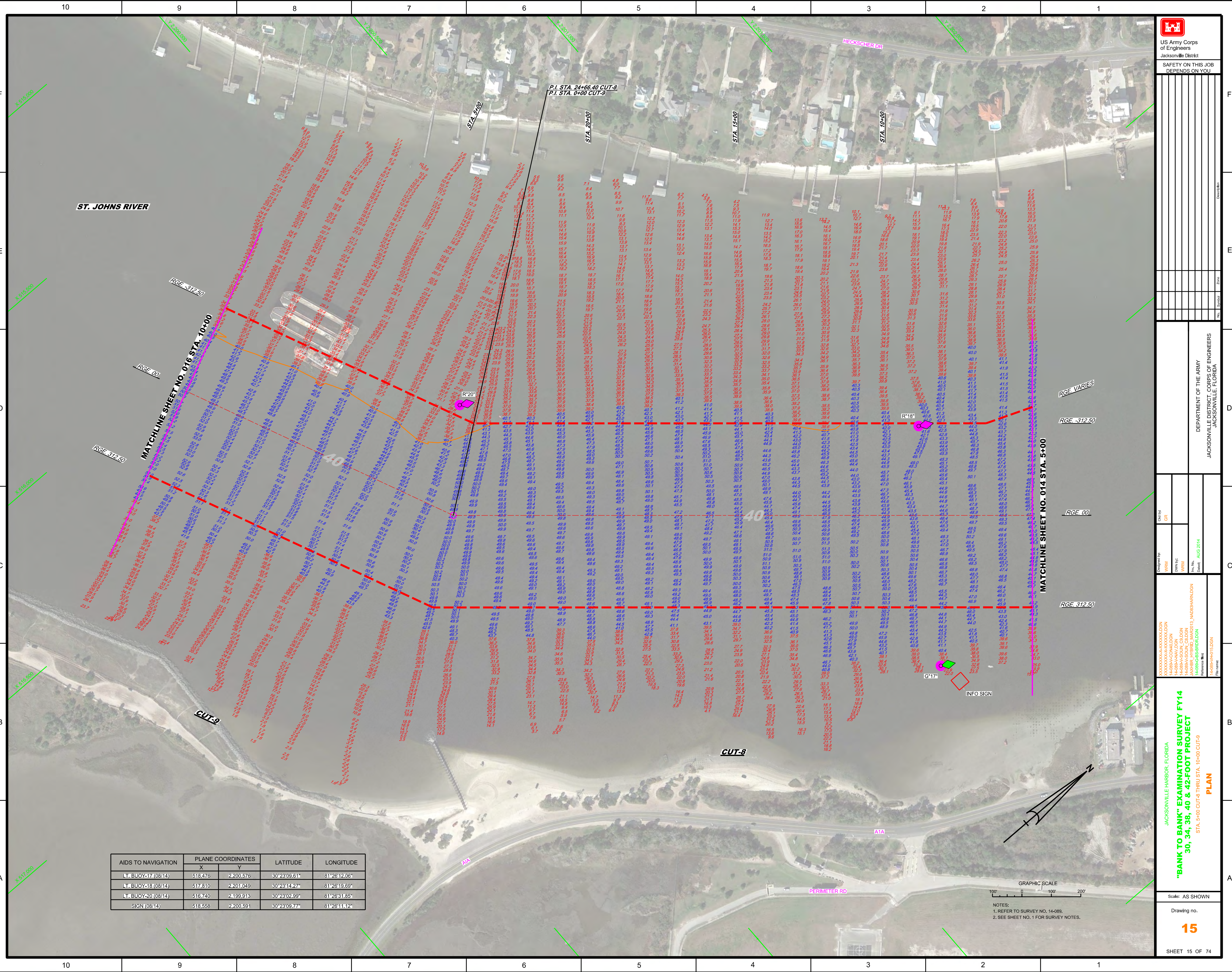
NOTES:  
 1. REFER TO SURVEY NO. 14-089.  
 2. SEE SHEET NO. 1 FOR SURVEY NOTES.



AIDS TO NAVIGATION	PLANE COORDINATES		LATITUDE	LONGITUDE
	X	Y		
LT. BUOY-17 (08/14)	518.476	2200.576	30°23'09.61"	81°26'12.06"
LT. BUOY-18 (08/14)	517.810	2201.049	30°23'14.27"	81°26'18.69"
LT. BUOY-20 (08/14)	516.740	2199.913	30°23'02.59"	81°26'31.85"
SIGN (08/14)	518.558	2200.591	30°23'09.77"	81°26'11.12"



NOTES:  
 1. REFER TO SURVEY NO. 14-089.  
 2. SEE SHEET NO. 1 FOR SURVEY NOTES.



10 9 8 7 6 5 4 3 2 1  
 F  
 E  
 D  
 C  
 B  
 A

10 9 8 7 6 5 4 3 2 1  
 F  
 E  
 D  
 C  
 B  
 A



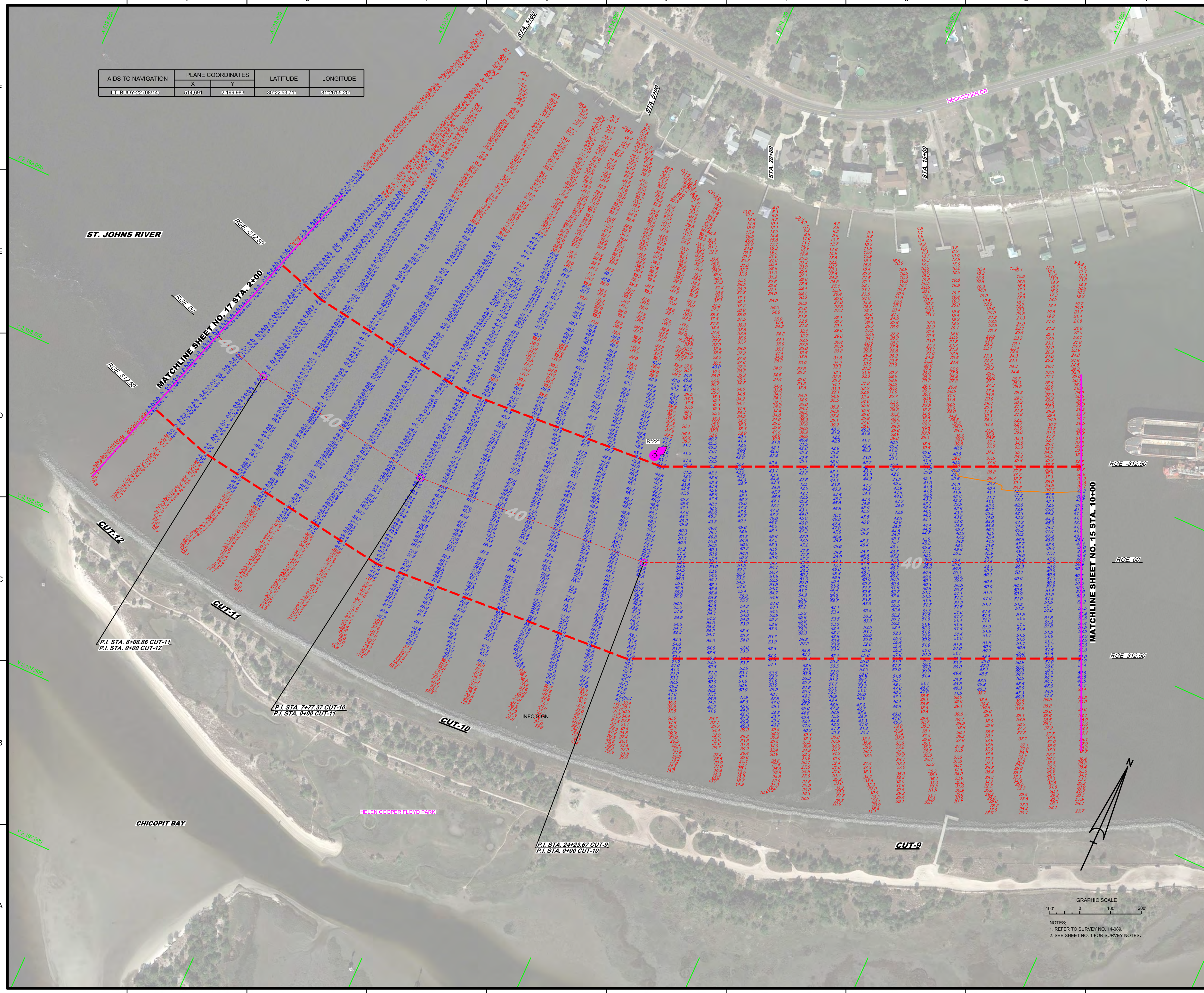
AIDS TO NAVIGATION	PLANE COORDINATES		LATITUDE	LONGITUDE
	X	Y		
LT. BUOY 22 (08/14)	514.691	2,199.983	30°22'43.71"	81°26'55.20"

US Army Corps of Engineers  
Jacksonville District

SAFETY ON THIS JOB  
DEPENDS ON YOU

DEPARTMENT OF THE ARMY  
JACKSONVILLE DISTRICT, CORPS OF ENGINEERS  
JACKSONVILLE, FLORIDA

Drawn by: [Blank]  
Checked by: [Blank]  
Scale: AS SHOWN



GRAPHIC SCALE  
100' 0 100 200

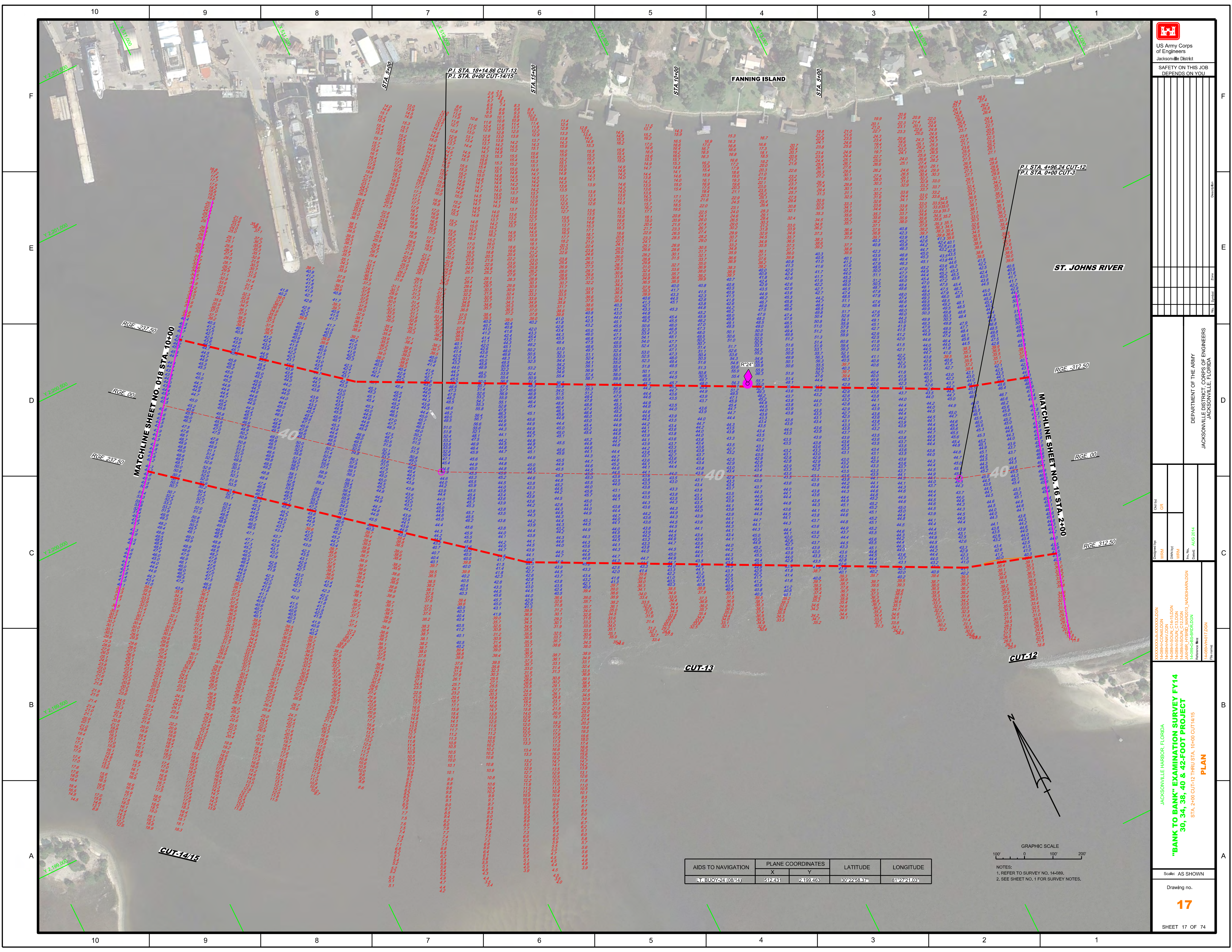
NOTES:  
1. REFER TO SURVEY NO. 14-089.  
2. SEE SHEET NO. 1 FOR SURVEY NOTES.

Project: JACKSONVILLE HARBOR, FLORIDA  
"BANK TO BANK" EXAMINATION SURVEY FY14  
30, 34, 38, 40 & 42-FOOT PROJECT  
STA. 10+00 CUT-9 THRU STA. 2+00 CUT-12

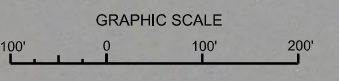
PLAN

Scale: AS SHOWN  
Drawing no. 16  
SHEET 16 OF 74



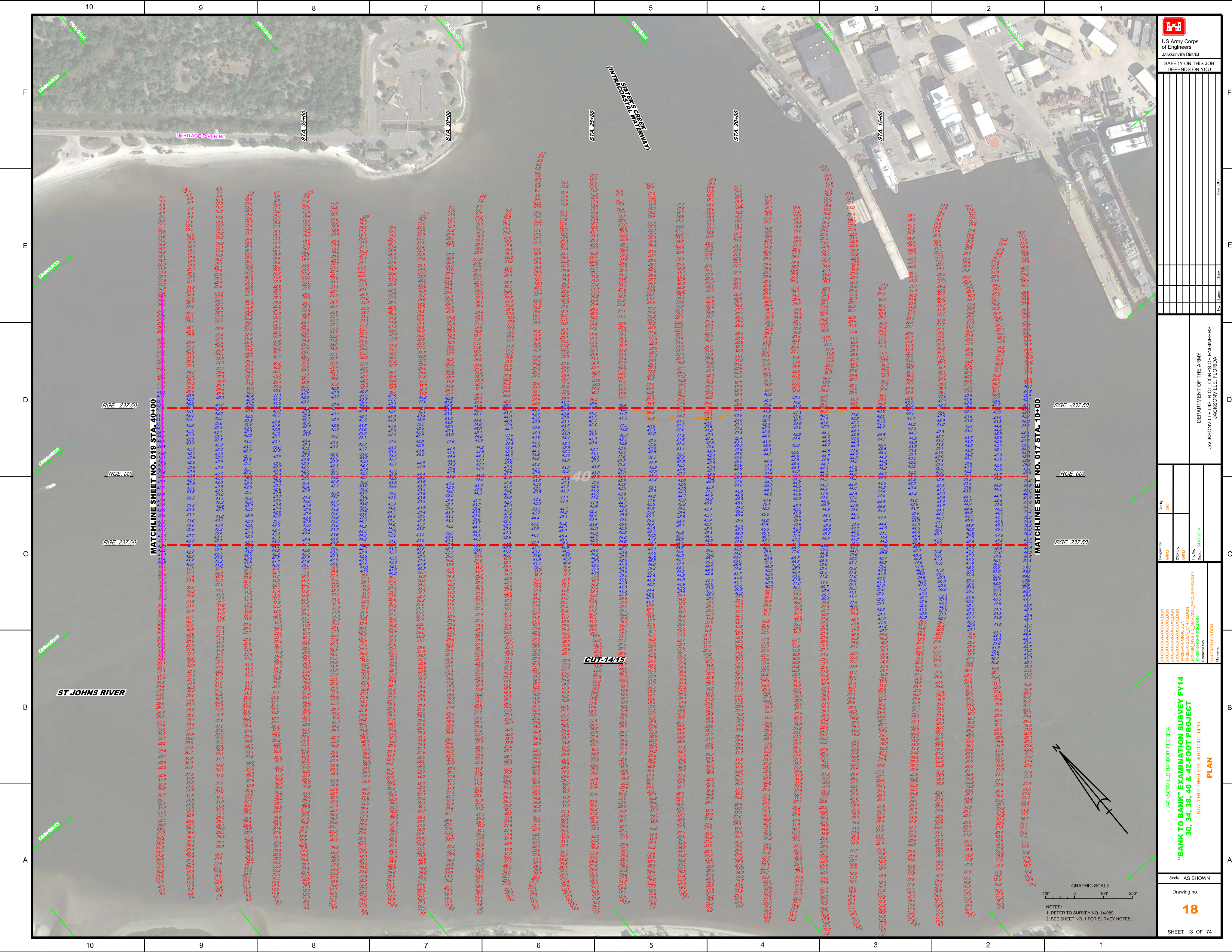


AIDS TO NAVIGATION	PLANE COORDINATES		LATITUDE	LONGITUDE
	X	Y		
Light Buoy 521 (0814)	512431	2419933	30°22'28.83"	81°27'21.03"



NOTES:  
1. REFER TO SURVEY NO. 14-089.  
2. SEE SHEET NO. 1 FOR SURVEY NOTES.





**US Army Corps of Engineers**  
 Jacksonville District  
 SAFETY ON THIS JOB  
 DEPENDS ON YOU

---

**JACKSONVILLE DISTRICT, CORPS OF ENGINEERS**  
 JACKSONVILLE, FLORIDA

---

**JACKSONVILLE HARBOR, FLORIDA**  
**"BANK TO BANK" EXAMINATION SURVEY FY14**  
**30, 34, 38, 40 & 42-FOOT PROJECT**  
 STA. 10+00 THRU STA. 40+00 CUT-14/15  
**PLAN**

---

Scale: AS SHOWN  
 Drawing No. **18**  
 SHEET 18 OF 74

---

Notes:  
 1. REFER TO SURVEY NO. 14-089.  
 2. SEE SHEET NO. 1 FOR SURVEY NOTES.

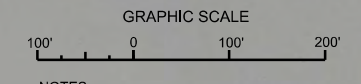




Prepared by: **WRM**  
 Checked by: **GR**  
 Date: **AUG 2014**

**"BANK TO BANK" EXAMINATION SURVEY FY14**  
**30, 34, 38, 40 & 42-FOOT PROJECT**  
 STA. 40+00 CUT-14/15 THRU STA. 10+00 CUT-17  
**PLAN**

AIDS TO NAVIGATION	PLANE COORDINATES		LATITUDE	LONGITUDE
	X	Y		
14-BUOY-245 (08/14)	506351	22093416	30°29'45.50"	81°28'20.62"
14-248 (08/14)	507493	22093664	30°29'38.74"	81°28'18.75"



NOTES:  
 1. REFER TO SURVEY NO. 14-886.  
 2. SEE SHEET NO. 1 FOR SURVEY NOTES.

Scale: AS SHOWN  
 Drawing no.





SAFETY ON THIS JOB  
DEPENDS ON YOU

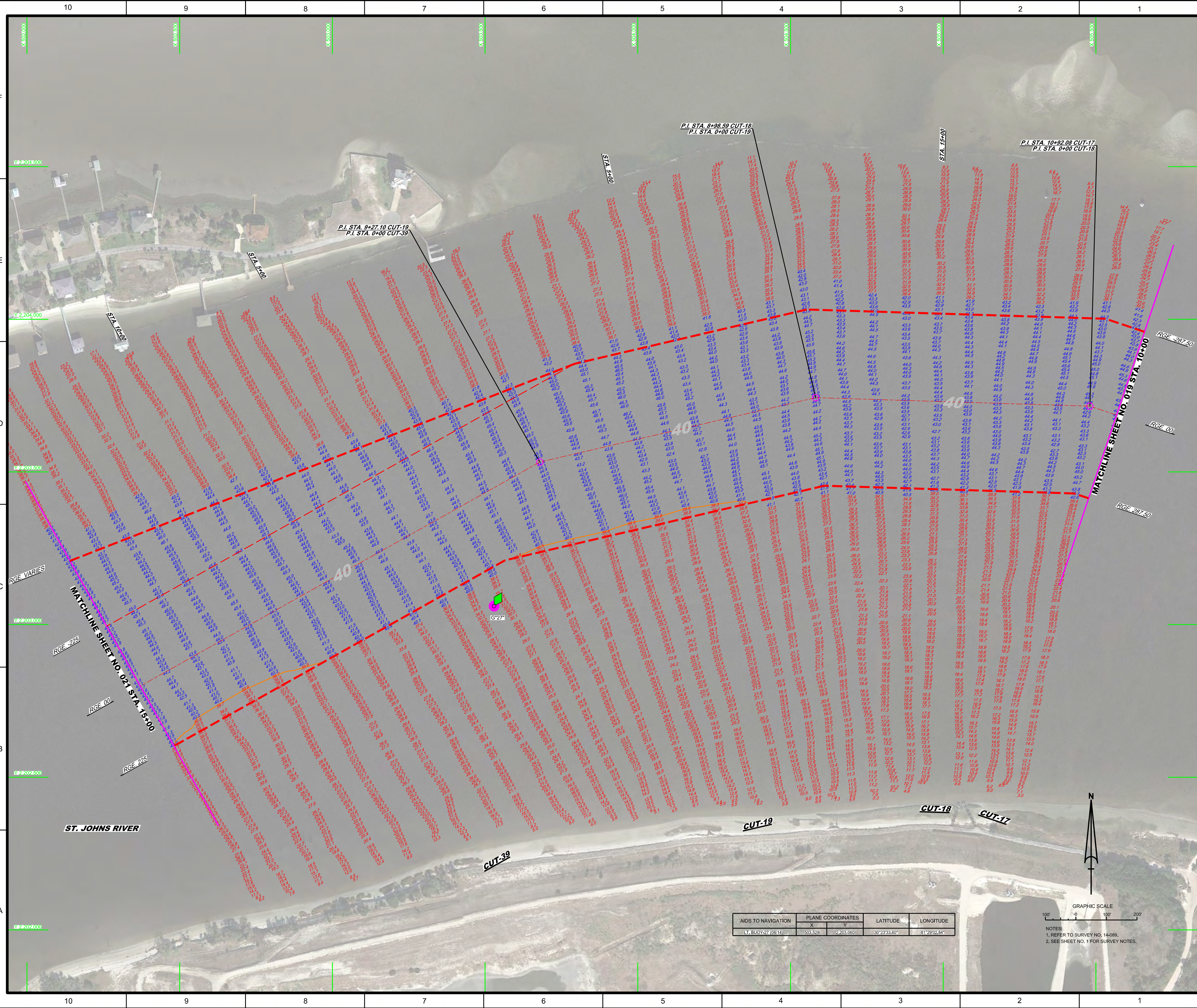
--	--	--	--	--	--	--	--	--	--	--	--	--	--	--	--	--	--	--	--	--

DEPARTMENT OF THE ARMY  
JACKSONVILLE DISTRICT, CORPS OF ENGINEERS  
JACKSONVILLE, FLORIDA

Designed by:	WRM
Checked by:	GRL
Drawn by:	WRM
Date:	AUG 2014

Project:	14-089A-HARBOR
Sheet:	20
Date:	AUG 2014

JACKSONVILLE HARBOR, FLORIDA  
**"BANK TO BANK" EXAMINATION SURVEY FY14**  
 30, 34, 38, 40 & 42-FOOT PROJECT  
 STA. 10+00 CUT-17 THRU STA. XXXX CUT-39  
**PLAN**



P.I. STA. 8+98.59 CUT-18  
P.I. STA. 0+00 CUT-19

P.I. STA. 9+27.10 CUT-19  
P.I. STA. 0+00 CUT-39

P.I. STA. 10+92.08 CUT-17  
P.I. STA. 0+00 CUT-18

ST. JOHNS RIVER

AIDS TO NAVIGATION	PLANE COORDINATES		LATITUDE	LONGITUDE
	X	Y		
Lt. BUOY-27 (08-14)	503.629	2,203.000	30°23'33.80"	81°29'02.84"

NOTES:  
 1. REFER TO SURVEY NO. 14-089.  
 2. SEE SHEET NO. 1 FOR SURVEY NOTES.