

ANCLOTE RIVER PASCO COUNTY, FLORIDA EXAMINATION SURVEY FY14 9-FOOT PROJECT

SURVEY NOTES

- REFER TO SURVEY NO. 14-063.
- DEPTHS DEPICTED BY THIS SURVEY ARE REFERENCED TO MLLW, TIDAL EPOCH 1983-2001 AS REPORTED BY THE NATIONAL OCEANIC AND ATMOSPHERIC ADMINISTRATION (NOAA). NOAA'S VDATUM MODEL WAS USED AND CALIBRATED TO THE PUBLISHED MLLW HEIGHTS OF THE BENCHMARKS ASSOCIATED WITH THE TIDE GAGE SITES SPECIFIED BELOW.
NOAA TIDAL STATION 872-6924, ANCLOTE RIVER, FLORIDA
- TIDAL REDUCTIONS WERE OBTAINED UTILIZING A REAL-TIME KINEMATIC (RTK) GPS AND REFERENCED TO MLLW UTILIZING A HYPACK KINEMATIC TIDE DATUM (KTD) MODEL. FILE NAME IS: "SPC-FL-WEST-2010-12-07.KTD".
- ALL ELEVATIONS ARE BELOW THE CHART DATUM UNLESS PRECEDED BY A (+) SIGN.
- PLANE COORDINATES ARE BASED ON THE TRANSVERSE MERCATOR PROJECTION FOR THE WEST ZONE OF FLORIDA AND REFERENCED TO NORTH AMERICAN DATUM OF 1983 (NAD83).
- ALL AZIMUTHS ARE GRID; RECKONED CLOCKWISE FROM SOUTH.
- ALL STATIONING REFERS TO THE CENTERLINE OF THE CHANNEL.
- THIS SURVEY WAS PERFORMED USING REAL-TIME KINEMATIC (RTK) GPS POSITIONING WITH THE FOLLOWING REFERENCE BASE LOCATIONS:
REFERENCE BASE LOCATED AT "PCDSM GPS 80" (NGS PID: DF5855)
TIDE STAFF WAS A MEASURE DOWN POINT SET FROM "LEISNER" (NGS PID: AL6628) LOCATED ON HEADWALL, APPRX. 50 FEET SOUTH OF BENCHMARK.
- VERTICAL MEASUREMENTS WERE MADE USING A ROSS MODEL 835C DUAL-FREQUENCY SMARTSOUNDER WITH A 28/200 KHZ SINGLE-BEAM TRANSDUCER AND AN EDGETECH MODEL 3205 MULTI-BEAM SYSTEM. ALL SOUNDINGS SHOWN ARE IN HIGH FREQUENCY.
- AIDS TO NAVIGATION WERE LOCATED DURING THIS SURVEY.
- THE INFORMATION DEPICTED ON THIS MAP REPRESENTS THE RESULTS OF SURVEYS MADE ON THE DATES INDICATED ABOVE AND CAN ONLY BE CONSIDERED AS INDICATING THE GENERAL CONDITIONS AT THAT TIME. THIS CHART IS SOLELY FOR THE DISTRIBUTION OF AVAILABLE DEPTHS AT THE TIME OF THE SURVEY AND IS NOT TO BE USED FOR NAVIGATION.
- SURVEY ACCURACY PERFORMANCE STANDARDS, QUALITY CONTROL, AND QUALITY ASSURANCE REQUIREMENTS WERE FOLLOWED DURING THIS SURVEY IN ACCORDANCE WITH USACE EM 1110-2-1003, HYDROGRAPHIC SURVEYING, 30 NOV 13.

VESSEL	DATE OF SURVEY	CUT
SB-48	08 JUL 2014	CUTS 9-14
SB-48	09 JUL 2014	CUTS 5-8, TURNING BASIN
SB-48	10 JUL 2014	CUTS 3-5
SB-48	11 JUL 2014	SOUTH ANCHORAGE AREA

LEGEND	
	MONUMENT
	LIGHTED BEACON
	GREEN DAYBEACON
	RED DAYBEACON
	RED LIGHTED BUOY
	GREEN LIGHTED BUOY
	CAN BUOY
	NUN BUOY
	TIDE STAFF
	PROJECT DEPTH

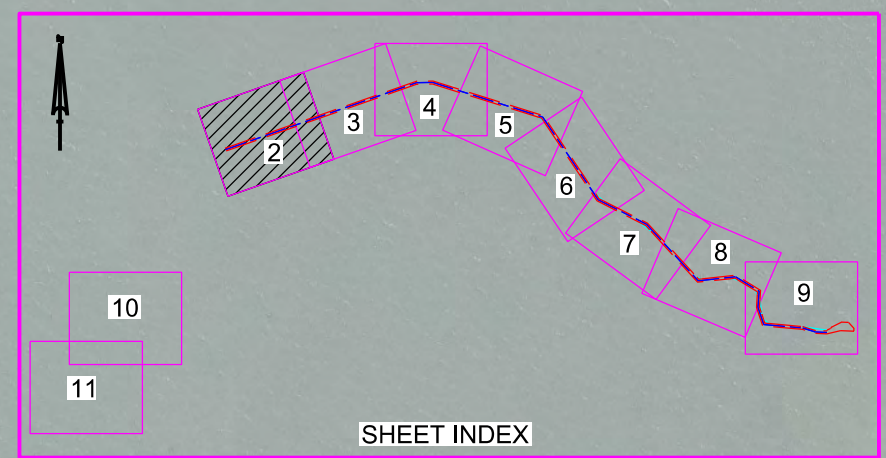
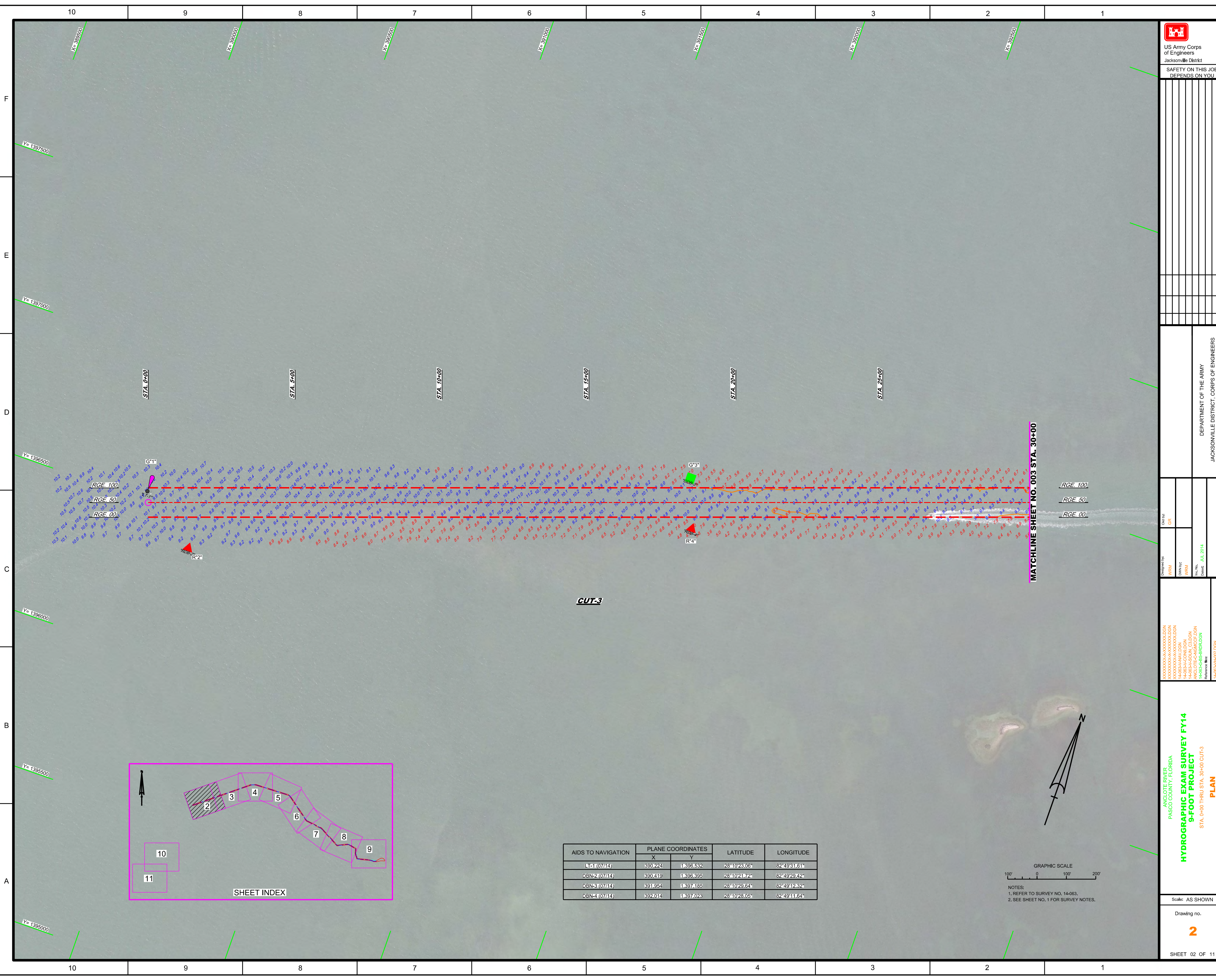
US Army Corps of Engineers
Jacksonville District
SAFETY ON THIS JOB
DEPENDS ON YOU

DEPARTMENT OF THE ARMY
JACKSONVILLE DISTRICT, CORPS OF ENGINEERS
JACKSONVILLE, FLORIDA

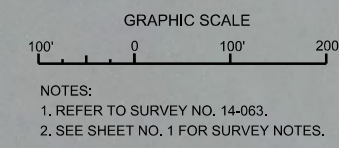
ANCLOTE RIVER
PASCO COUNTY, FLORIDA
**HYDROGRAPHIC EXAM SURVEY FY14
9-FOOT PROJECT**
INDEX, LOCATION AND VICINITY
MAP

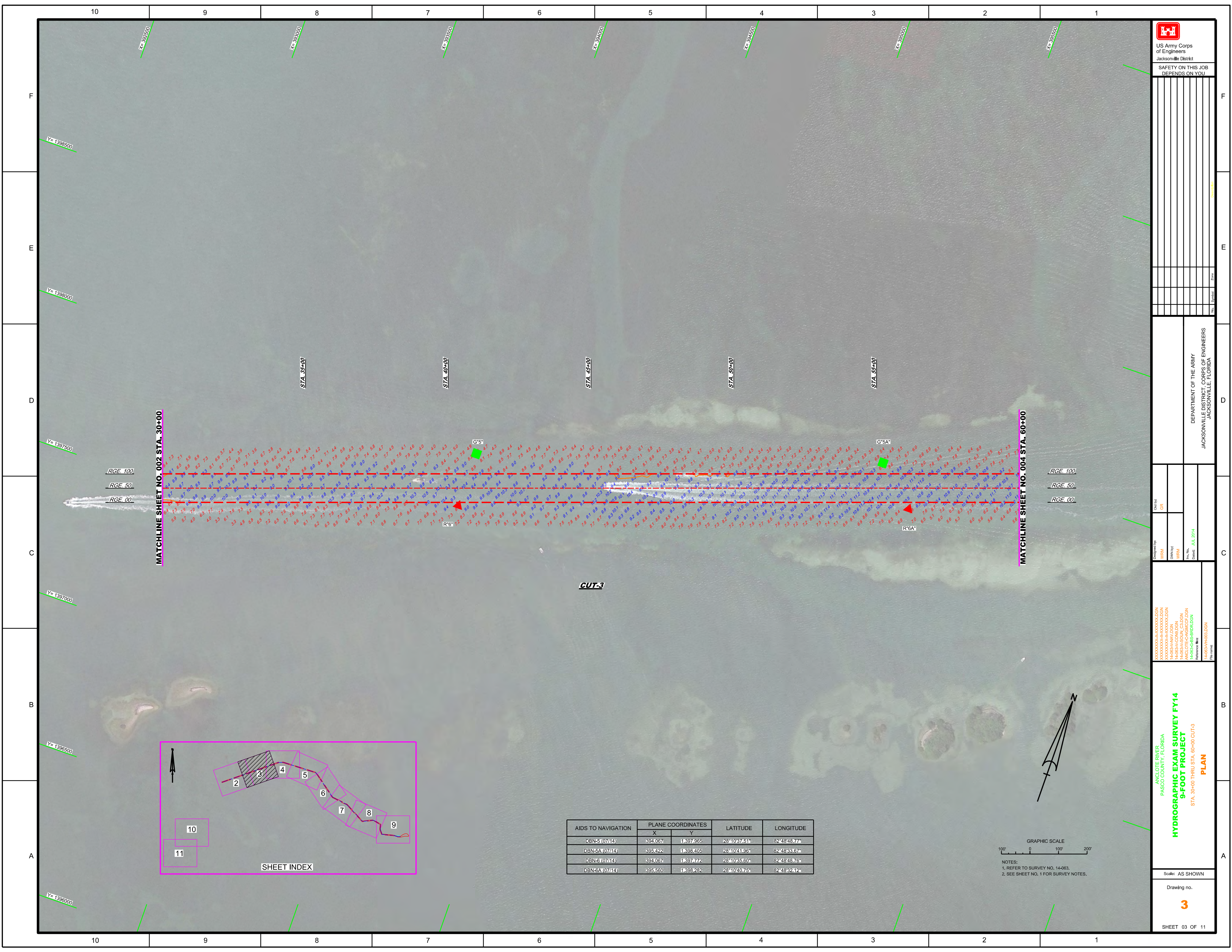
Scale: AS SHOWN
Drawing no. **1**

SHEET 01 OF 11



AIDS TO NAVIGATION	PLANE COORDINATES		LATITUDE	LONGITUDE
	X	Y		
DA-1 (07/14)	390.224	1.396.532	28°10'23.06"	82°49'31.61"
DBN-2 (07/14)	390.419	1.396.395	28°10'21.72"	82°49'29.42"
DBN-3 (07/14)	391.954	1.397.185	28°10'29.64"	82°49'12.32"
DBN-4 (07/14)	392.014	1.397.023	28°10'28.05"	82°49'11.64"





US Army Corps
of Engineers
Jacksonville District

SAFETY ON THIS JOB
DEPENDS ON YOU

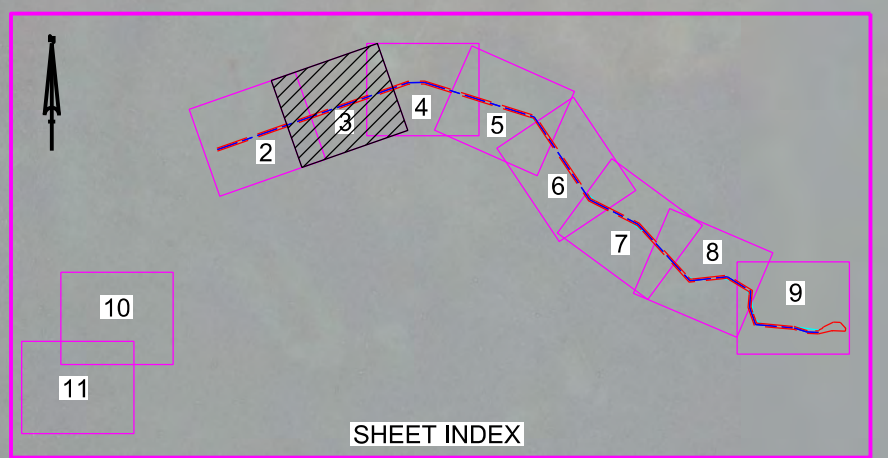
DEPARTMENT OF THE ARMY
JACKSONVILLE DISTRICT, CORPS OF ENGINEERS
JACKSONVILLE, FLORIDA

Checked by: GR
Designed by: WRM
Drawn by: WRM
File No.: H4635-CA-001
Date: JUL 2014

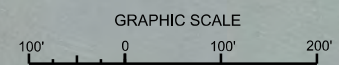
XXXXXXXXXXXXXXXXXXXXDGN
XXXXXXXXXXXXXXXXXXXXDGN
XXXXXXXXXXXXXXXXXXXXDGN
H4635-CA-001.DGN
H4635-CA-001.DGN
H4635-CA-001.DGN
H4635-CA-001.DGN
H4635-CA-001.DGN
Reference files:
H4635-CA-001.DGN
File name:

ANGLICOTE RIVER
PASCO COUNTY, FLORIDA
HYDROGRAPHIC EXAM SURVEY FY14
9-FOOT PROJECT
STA. 39+00 THRU STA. 60+00 CUT-3
PLAN

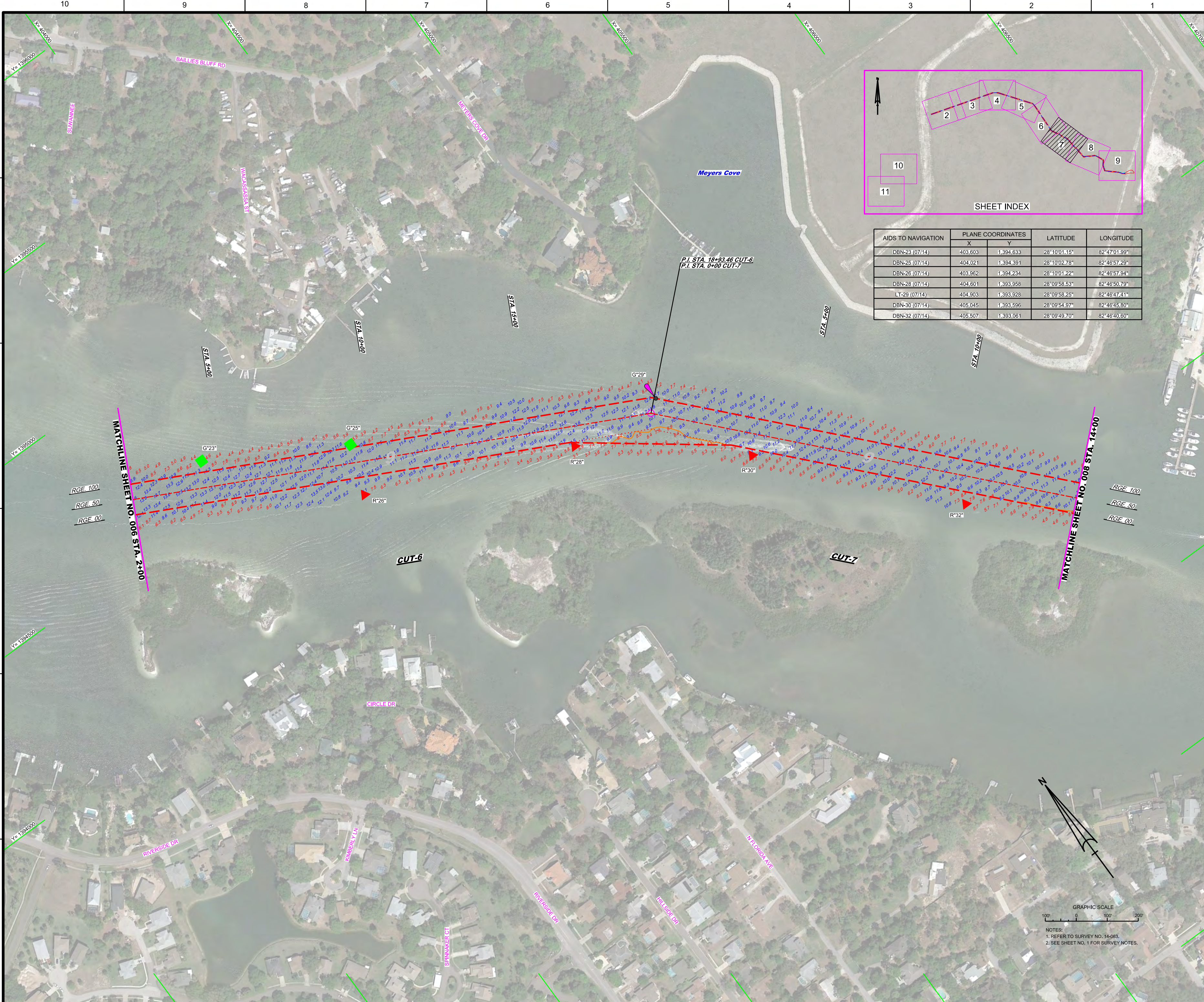
Scale: AS SHOWN
Drawing no.
3



AIDS TO NAVIGATION	PLANE COORDINATES		LATITUDE	LONGITUDE
	X	Y		
DBN-5 (07/14)	394.067	1,397,965	28°10'37.51"	82°48'48.77"
DBN-5A (07/14)	395.422	1,398,405	28°10'41.96"	82°48'33.67"
DBN-5 (07/14)	394.067	1,397,772	28°10'35.60"	82°48'48.76"
DBN-5A (07/14)	395.560	1,398,282	28°10'40.75"	82°48'32.12"

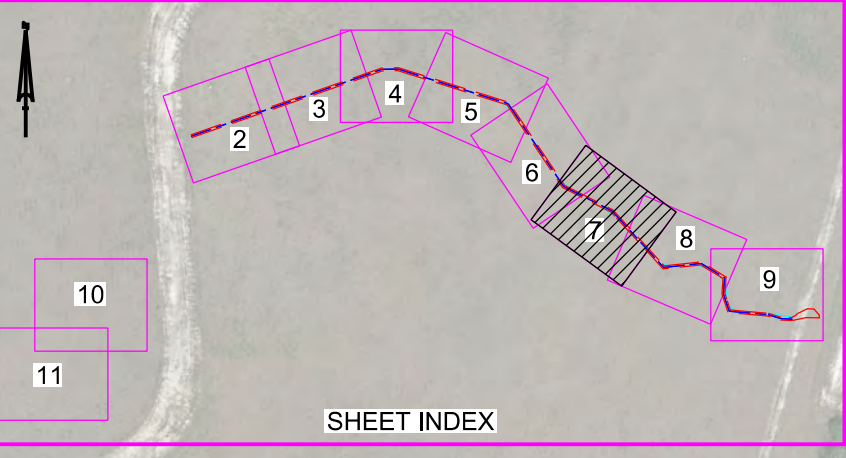


NOTES:
1. REFER TO SURVEY NO. 14-063.
2. SEE SHEET NO. 1 FOR SURVEY NOTES.



US Army Corps of Engineers
Jacksonville District
SAFETY ON THIS JOB
DEPENDS ON YOU

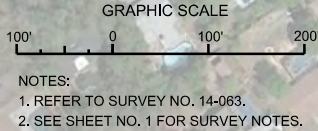
AIDS TO NAVIGATION	PLANE COORDINATES		LATITUDE	LONGITUDE
	X	Y		
DBN-23 (07/14)	403,603	1,394,633	28°10'01.15"	82°47'01.99"
DBN-25 (07/14)	404,021	1,394,391	28°10'02.78"	82°46'57.29"
DBN-26 (07/14)	403,962	1,394,234	28°10'01.22"	82°46'57.94"
DBN-28 (07/14)	404,601	1,393,958	28°09'58.53"	82°46'50.79"
LT-29 (07/14)	404,903	1,393,928	28°09'58.25"	82°46'47.41"
DBN-30 (07/14)	405,045	1,393,596	28°09'54.97"	82°46'45.80"
DBN-32 (07/14)	405,507	1,393,061	28°09'49.70"	82°46'40.80"



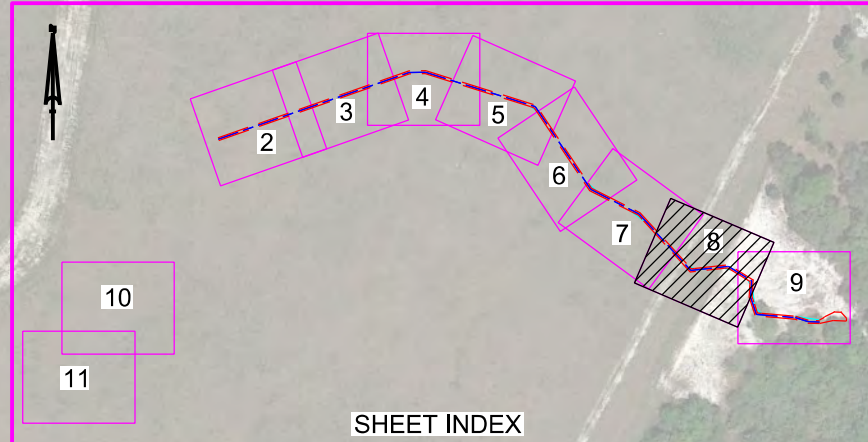
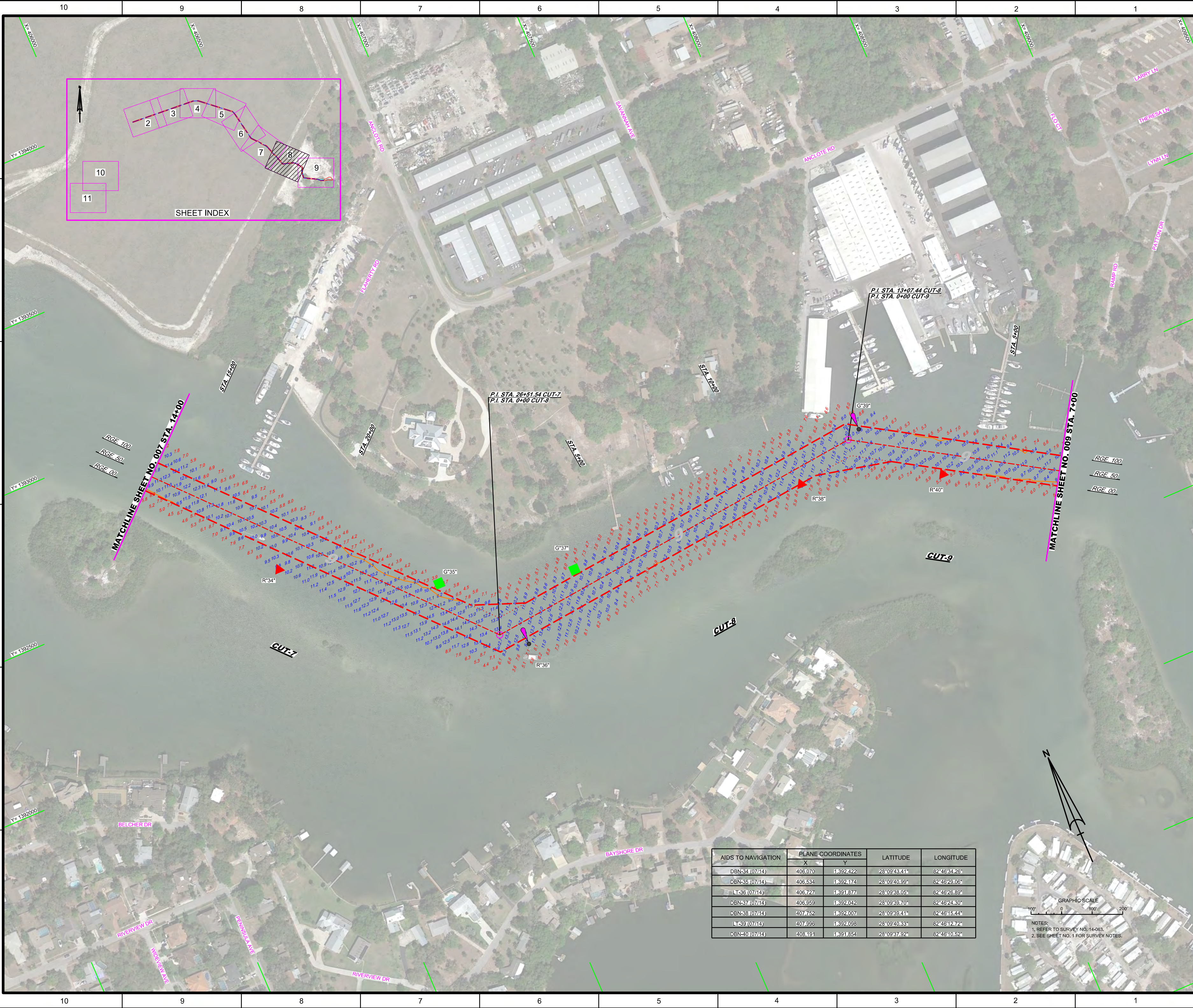
DEPARTMENT OF THE ARMY
JACKSONVILLE DISTRICT, CORPS OF ENGINEERS
JACKSONVILLE, FLORIDA

Designed by: WRM
Checked by: GR
Drawn by: WRM
File Name: H40833-95-BR107.DGN
Date: JUL 2014

ANGLOTE RIVER
PASCO COUNTY, FLORIDA
HYDROGRAPHIC EXAM SURVEY FY14
9-FOOT PROJECT
STA. 2+00 CUT-6 THRU STA. 14+00 CUT-7
PLAN



Scale: AS SHOWN
Drawing no. **7**
SHEET 07 OF 11



MATCHLINE SHEET NO. 007 STA. 14+00

MATCHLINE SHEET NO. 009 STA. 7+00


P.I. STA. 26+51.54 CUT-7
P.I. STA. 0+00 CUT-8

P.I. STA. 13+07.44 CUT-8
P.I. STA. 0+00 CUT-9

AIDS TO NAVIGATION	PLANE COORDINATES		LATITUDE	LONGITUDE
	X	Y		
DBN-34 (07/14)	406.070	1.392.422	28°09'43.41"	82°46'34.26"
DBN-35 (07/14)	406.534	1.392.174	28°09'40.99"	82°46'29.06"
LT-38 (07/14)	406.727	1.391.877	28°09'38.05"	82°46'26.89"
DBN-37 (07/14)	406.959	1.392.042	28°09'39.70"	82°46'24.30"
DBN-38 (07/14)	407.762	1.392.007	28°09'39.41"	82°46'15.44"
LT-39 (07/14)	407.996	1.392.098	28°09'40.33"	82°46'12.72"
DBN-40 (07/14)	408.191	1.391.854	28°09'37.92"	82°46'10.52"

GRAPHIC SCALE
100' 0 100' 200'

NOTES:
1. REFER TO SURVEY NO. 14-063.
2. SEE SHEET NO. 1 FOR SURVEY NOTES.



US Army Corps of Engineers
Jacksonville District
SAFETY ON THIS JOB
DEPENDS ON YOU

DEPARTMENT OF THE ARMY
JACKSONVILLE DISTRICT, CORPS OF ENGINEERS
JACKSONVILLE, FLORIDA

Drawn by: GRL
Checked by: GRL
Designed by: WRM
DWG No: WRM
File No: WRM
Date: JUL 2014

XXXXXXXXXXXXXXXXXXXX
H4085A-H4085A-DGN
H4085A-H4085A-DGN
H4085A-H4085A-DGN
H4085A-H4085A-DGN
H4085A-H4085A-DGN
H4085A-H4085A-DGN
H4085A-H4085A-DGN

HYDROGRAPHIC EXAM SURVEY FY14
9-FOOT PROJECT
PLAN

ANCLOTE RIVER
PASCO COUNTY, FLORIDA

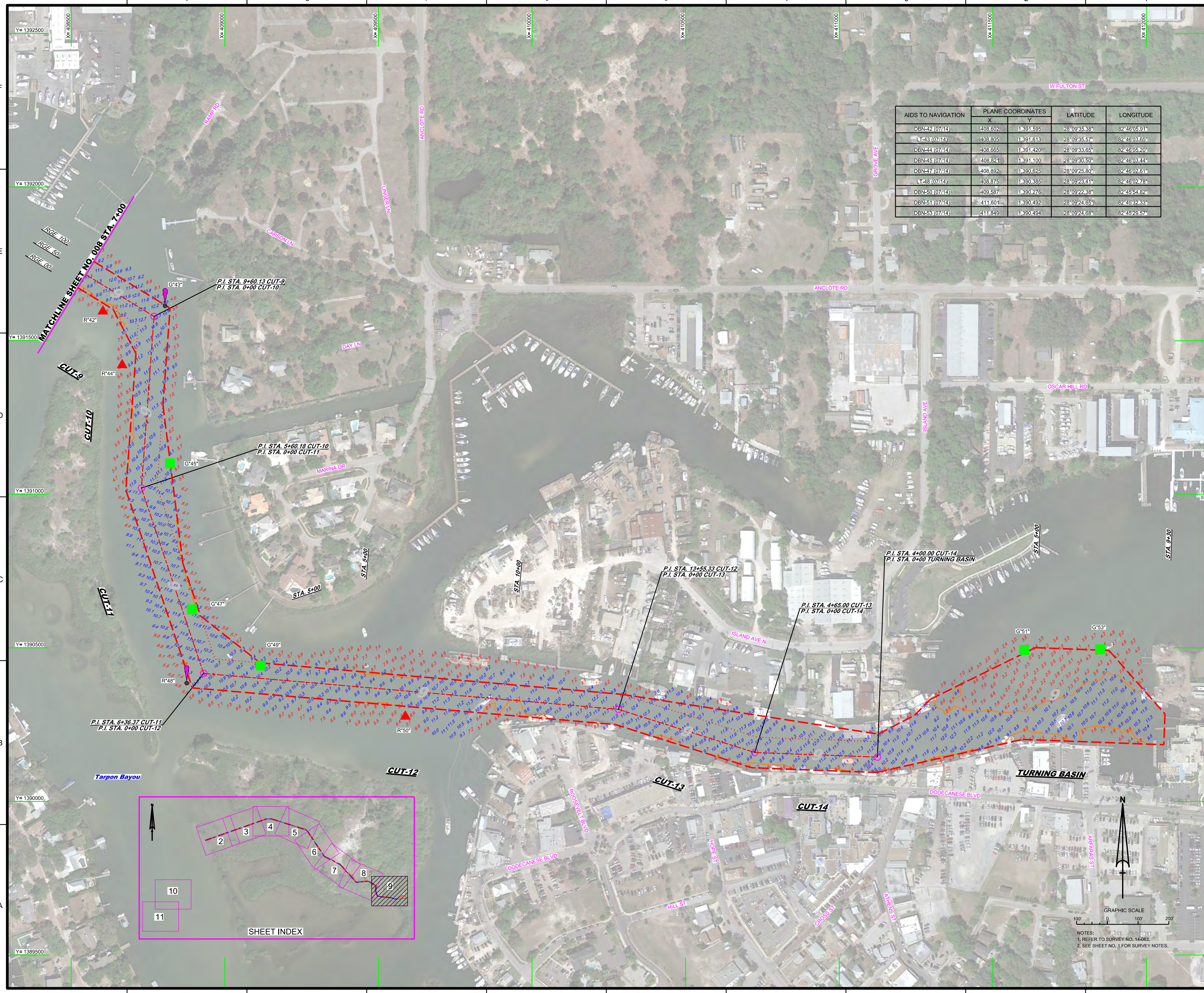
STA. 14+00 CUT-7 THRU STA. 7+00 CUT-9

Scale: AS SHOWN

Drawing no.
8

SHEET 08 OF 11

AIDS TO NAVIGATION	PLANE COORDINATES		LATITUDE	LONGITUDE
	X	Y		
DBN-42 (07/14)	408.602	1,391.595	28°09'35.38"	82°46'05.91"
LT-43 (07/14)	408.805	1,391.613	28°09'35.57"	82°46'03.65"
DBN-44 (07/14)	408.665	1,391.420	28°09'33.65"	82°46'05.20"
DBN-45 (07/14)	408.821	1,391.100	28°09'30.50"	82°46'03.44"
DBN-47 (07/14)	408.892	1,390.625	28°09'25.80"	82°46'02.61"
LT-48 (07/14)	408.875	1,390.385	28°09'23.41"	82°46'02.78"
DBN-50 (07/14)	409.587	1,390.276	28°09'22.38"	82°45'54.82"
DBN-51 (07/14)	411.601	1,390.492	28°09'24.65"	82°45'52.83"
DBN-53 (07/14)	411.849	1,390.494	28°09'24.68"	82°45'29.57"

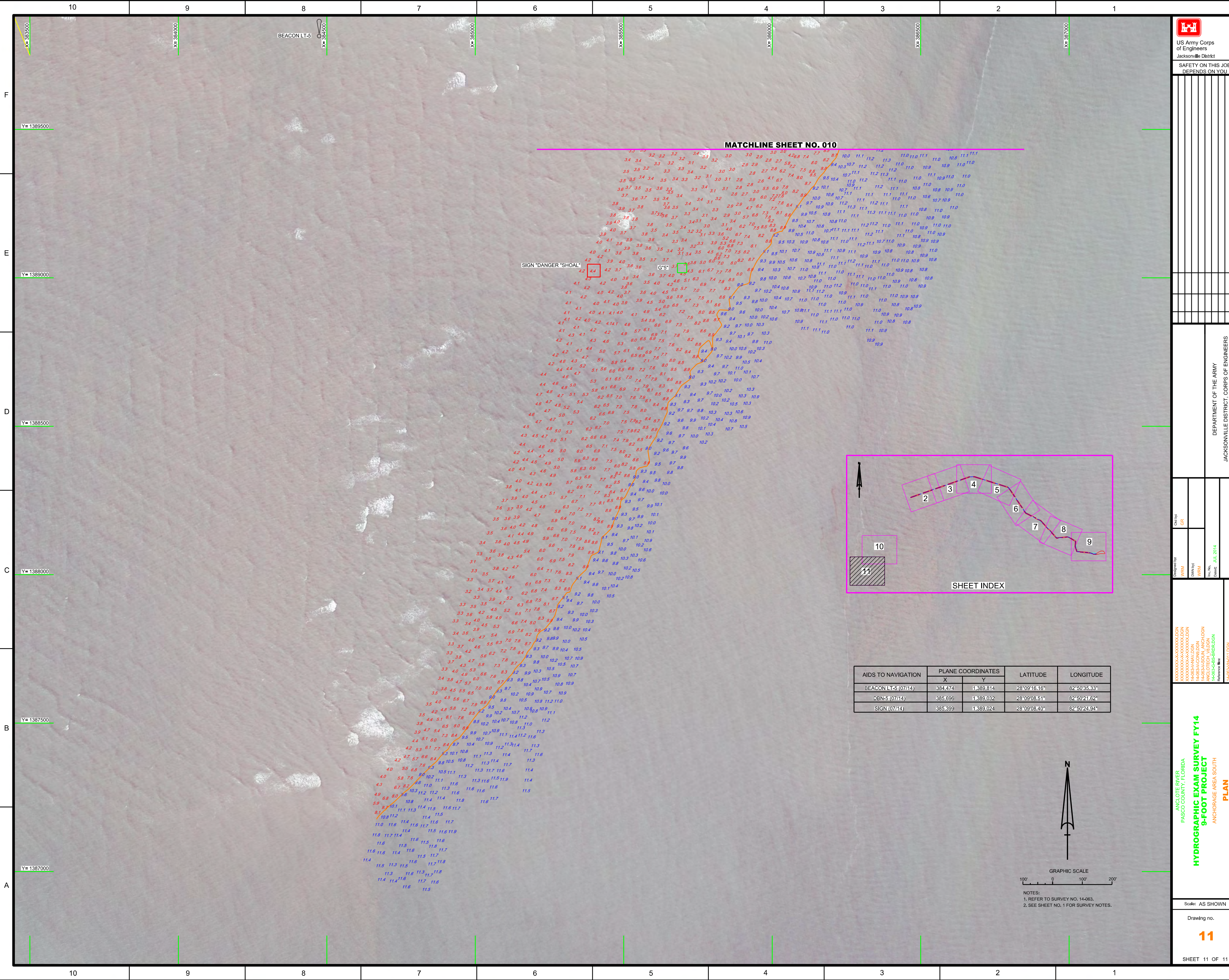



DEPARTMENT OF THE ARMY
JACKSONVILLE DISTRICT, CORPS OF ENGINEERS
JACKSONVILLE, FLORIDA

Checked By: GRL
Designed By: WRM
Drawn By: WRM
File No.: 14-063
Date: JUL 2014

ANCLOTE RIVER
PASCO COUNTY, FLORIDA
HYDROGRAPHIC EXAM SURVEY FY14
9-FOOT PROJECT
STA. 7+00 CUT-9 THRU STA. 9+30 TURNING BASIN
PLAN

NOTES:
1. REFER TO SURVEY NO. 14-063.
2. SEE SHEET NO. 1 FOR SURVEY NOTES.





US Army Corps
of Engineers
Jacksonville District

SAFETY ON THIS JOB
DEPENDS ON YOU

DEPARTMENT OF THE ARMY
JACKSONVILLE DISTRICT, CORPS OF ENGINEERS
JACKSONVILLE, FLORIDA

Designed by: **WRM**
Checked by: **GRL**

Drawn by: **WRM**
Checked by: **WRM**

File No: **H4063-CH-CON-LDGN**
Contract: **JUL 2014**

Reference Map: **H4063-CH-CON-LDGN**
File Name: **H4063-CH-CON-LDGN**

ANGLOTE RIVER
PASCO COUNTY, FLORIDA
HYDROGRAPHIC EXAM SURVEY FY14
9-FOOT PROJECT
ANCHORAGE AREA SOUTH
PLAN

Scale: AS SHOWN

Drawing no.
11

SHEET 11 OF 11

AIDS TO NAVIGATION	PLANE COORDINATES		LATITUDE	LONGITUDE
	X	Y		
BEACON LT-5 (07/14)	384,474	1,389,814	28°09'16.16"	82°50'35.33"
DBN-5 (07/14)	385,696	1,389,032	28°09'08.51"	82°50'21.62"
SIGN (07/14)	385,399	1,389,024	28°09'08.40"	82°50'24.94"

