

ST. AUGUSTINE INLET, FLORIDA EXAMINATION SURVEY 16-FOOT PROJECT



SURVEY NOTES

- REFER TO SURVEY NO. 14-053.
- DEPTHS DEPICTED BY THIS SURVEY ARE REFERENCED TO MEAN LOWER LOW WATER (MLLW), TIDAL EPOCH 1983-2001, AS REPORTED BY THE NATIONAL OCEANIC AND ATMOSPHERIC ADMINISTRATION (NOAA). NOAA'S VDATUM MODEL WAS USED AND CALIBRATED TO THE PUBLISHED MLLW HEIGHTS OF THE BENCH MARKS ASSOCIATED WITH THE TIDE GAGE SITE SPECIFIED BELOW:

NOAA TIDAL STATION 872-0554, VILANO BEACH (ICWW)
- TIDAL REDUCTIONS WERE OBTAINED UTILIZING A REAL-TIME KINEMATIC (RTK) GPS AND REFERENCED TO MLLW UTILIZING A HYPACK KINEMATIC TIDE DATUM (KTD) MODEL PRODUCED USING NOAA VDATUM. KTD FILE NAME IS: CAMDENG-NASSAU-DUVAL-STJOHNS-FLAGLER_01FEB2011.KTD.
- ALL ELEVATIONS ARE BELOW THE CHART DATUM UNLESS PRECEDED BY A (+) SIGN.
- PLANE COORDINATES ARE BASED ON THE TRANSVERSE MERCATOR PROJECTION FOR THE EAST ZONE OF FLORIDA AND REFERENCED TO NORTH AMERICAN DATUM OF 1983 (NAD83).
- ALL AZIMUTHS ARE GRID; RECKONED CLOCKWISE FROM SOUTH.
- ALL STATIONING REFERS TO THE CENTERLINE OF THE CHANNEL.
- THIS SURVEY WAS PERFORMED USING REAL-TIME KINEMATIC GPS POSITIONING WITH THE FOLLOWING REFERENCE BASE LOCATIONS:

REFERENCE BASE LOCATED AT "RAMP RESET, 2010" (OPUS PID # BBBC11)

TIDE STAFF LOCATED AT "872 0554B" (NGS PID # DL5712)
- VERTICAL MEASUREMENTS WERE MADE USING A ROSS MODEL 835B DUAL-FREQUENCY 28/200 KHZ SMART SOUNDER. ALL DEPTHS SHOWN ARE IN HIGH FREQUENCY.

VESSEL	DATE OF SURVEY	CUT
SB-46	03 MAR 2014	ENTRANCE CHANNEL
- AIDS TO NAVIGATION WERE COLLECTED DURING THIS SURVEY.
- THE INFORMATION DEPICTED ON THIS MAP REPRESENTS THE RESULTS OF SURVEYS MADE ON THE DATES INDICATED ABOVE AND CAN ONLY BE CONSIDERED AS INDICATING THE GENERAL CONDITIONS AT THAT TIME. THIS CHART IS SOLELY FOR THE DISTRIBUTION OF AVAILABLE DEPTHS AT THE TIME OF THE SURVEY AND IS NOT TO BE USED FOR NAVIGATION.
- SURVEY ACCURACY PERFORMANCE STANDARDS, QUALITY CONTROL, AND QUALITY ASSURANCE REQUIREMENTS WERE FOLLOWED DURING THIS SURVEY IN ACCORDANCE WITH USACE EM 1110-2-1003, HYDROGRAPHIC SURVEYING, 1 JAN 02.

LEGEND	
+ BM	BENCHMARK
⚓	LIGHTED BEACON
■	GREEN DAYBEACON
▲	RED DAYBEACON
⚓	RED LIGHTED BUOY
⚓	GREEN LIGHTED BUOY
⚓	CAN BUOY
⚓	NUN BUOY
⚓	TIDE STAFF
8	PROJECT DEPTH

US Army Corps of Engineers
Jacksonville District

SAFETY ON THIS JOB
DEPENDS ON YOU

DESIGNED BY: WRM
DRAWN BY: WRM
CHECKED BY: WRM
DATE: MAR 2014

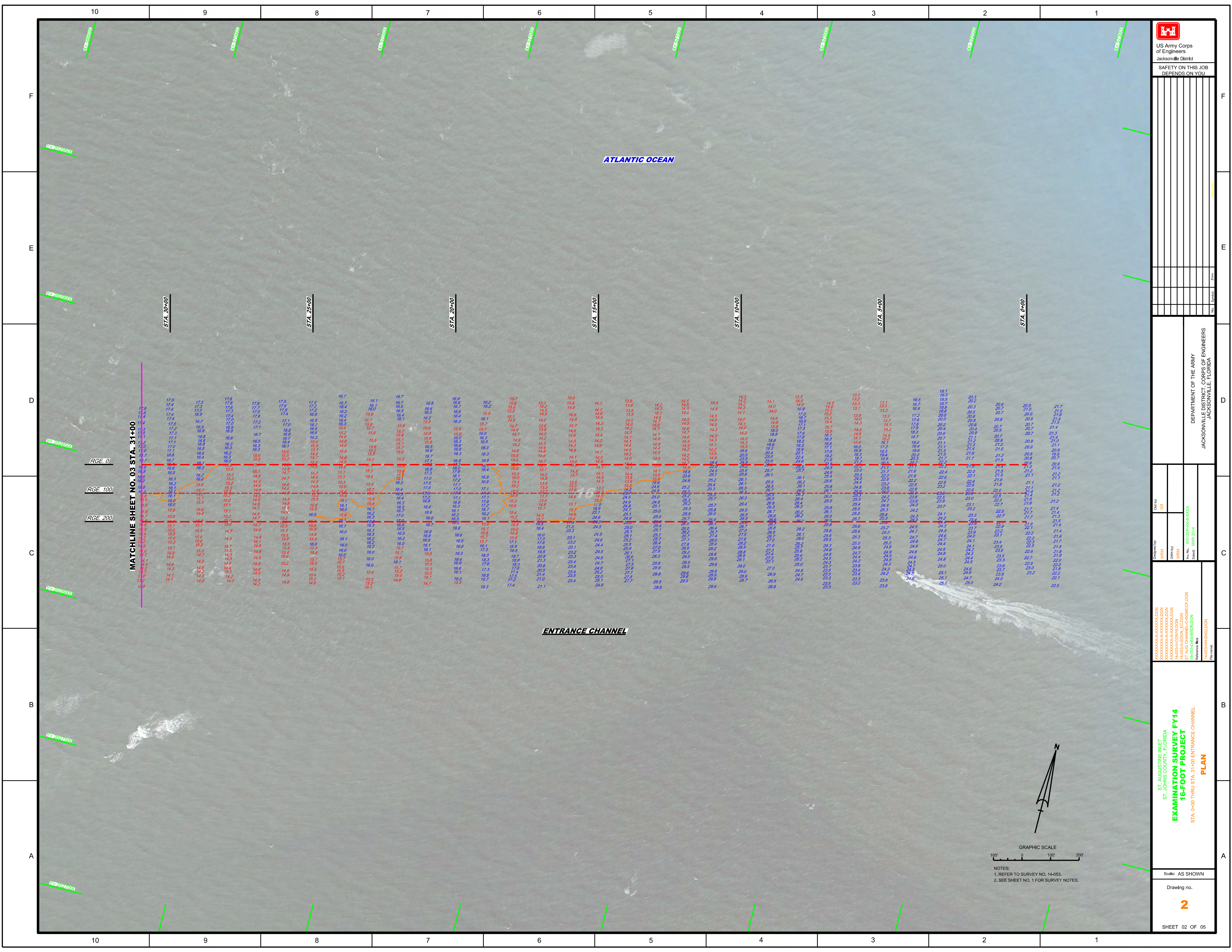
FILE NAME: W82258-000-0000.DGN
PROJECT: ST AUG CHANNEL CANAL W/OFF DGN
REFERENCE FILE: H-835-B-S-835.DGN
FILE NAME: H-835-B-S-835.DGN

ST. AUGUSTINE INLET,
ST. JOHNS COUNTY, FLORIDA
EXAMINATION SURVEY FY14
16-FOOT PROJECT
INDEX, LOCATION AND VICINITY MAP

Scale: AS SHOWN

Drawing no.
1

SHEET 01 OF 05



US Army Corps of Engineers
Jacksonville District

SAFETY ON THIS JOB
DEPENDS ON YOU

DEPARTMENT OF THE ARMY
JACKSONVILLE DISTRICT, CORPS OF ENGINEERS
JACKSONVILLE, FLORIDA

Designed by: GRL
Checked by: GRL
Drawn by: GRL
Title: EXAMINATION SURVEY FY14
Project: ST AUGUSTINE INLET
Drawing No: 02 OF 05

ST. AUGUSTINE INLET
ST. JOHNS COUNTY, FLORIDA
**EXAMINATION SURVEY FY14
16-FOOT PROJECT**
STA. 0+00 THRU STA. 31+00 ENTRANCE CHANNEL
PLAN

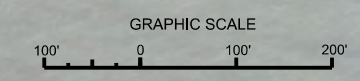
Scale: AS SHOWN
Drawing no. **2**
SHEET 02 OF 05

MATCHLINE SHEET NO. 03 STA. 31+00

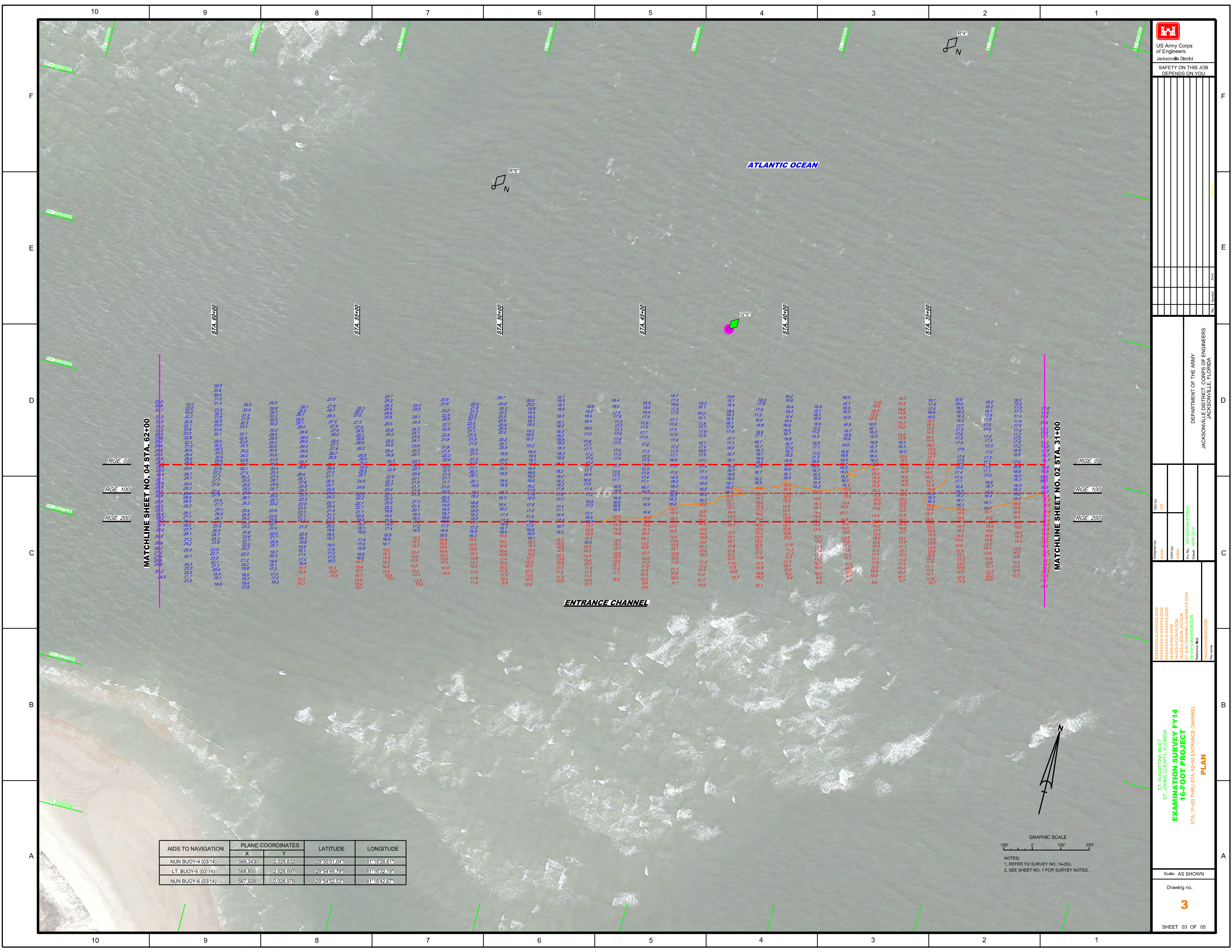
RGE. 0
RGE. 100
RGE. 200

ENTRANCE CHANNEL

ATLANTIC OCEAN



NOTES:
1. REFER TO SURVEY NO. 14-053.
2. SEE SHEET NO. 1 FOR SURVEY NOTES.



US Army Corps of Engineers
Jacksonville District

SAFETY ON THIS JOB DEPENDS ON YOU

DEPARTMENT OF THE ARMY
JACKSONVILLE DISTRICT, CORPS OF ENGINEERS
JACKSONVILLE, FLORIDA

AIDS TO NAVIGATION	PLANE COORDINATES		LATITUDE	LONGITUDE
	X	Y		
NUN BUOY-4 (03/14)	569,343	2,029,832	29°54'01.04"	81°16'26.61"
LT. BUOY-5 (03/14)	568,850	2,028,697	29°54'49.79"	81°16'32.19"
NUN BUOY-6 (03/14)	567,928	2,028,976	29°54'52.53"	81°16'42.67"

GRAPHIC SCALE
0 100' 200'

NOTES:
1. REFER TO SURVEY NO. 14-053.
2. SEE SHEET NO. 1 FOR SURVEY NOTES.

ST. AUGUSTINE INLET
ST. JOHNS COUNTY, FLORIDA
EXAMINATION SURVEY FY14
16-FOOT PROJECT
STA. 31+00 THRU STA. 62+00 ENTRANCE CHANNEL
PLAN

Scale: AS SHOWN

Drawing no.
3

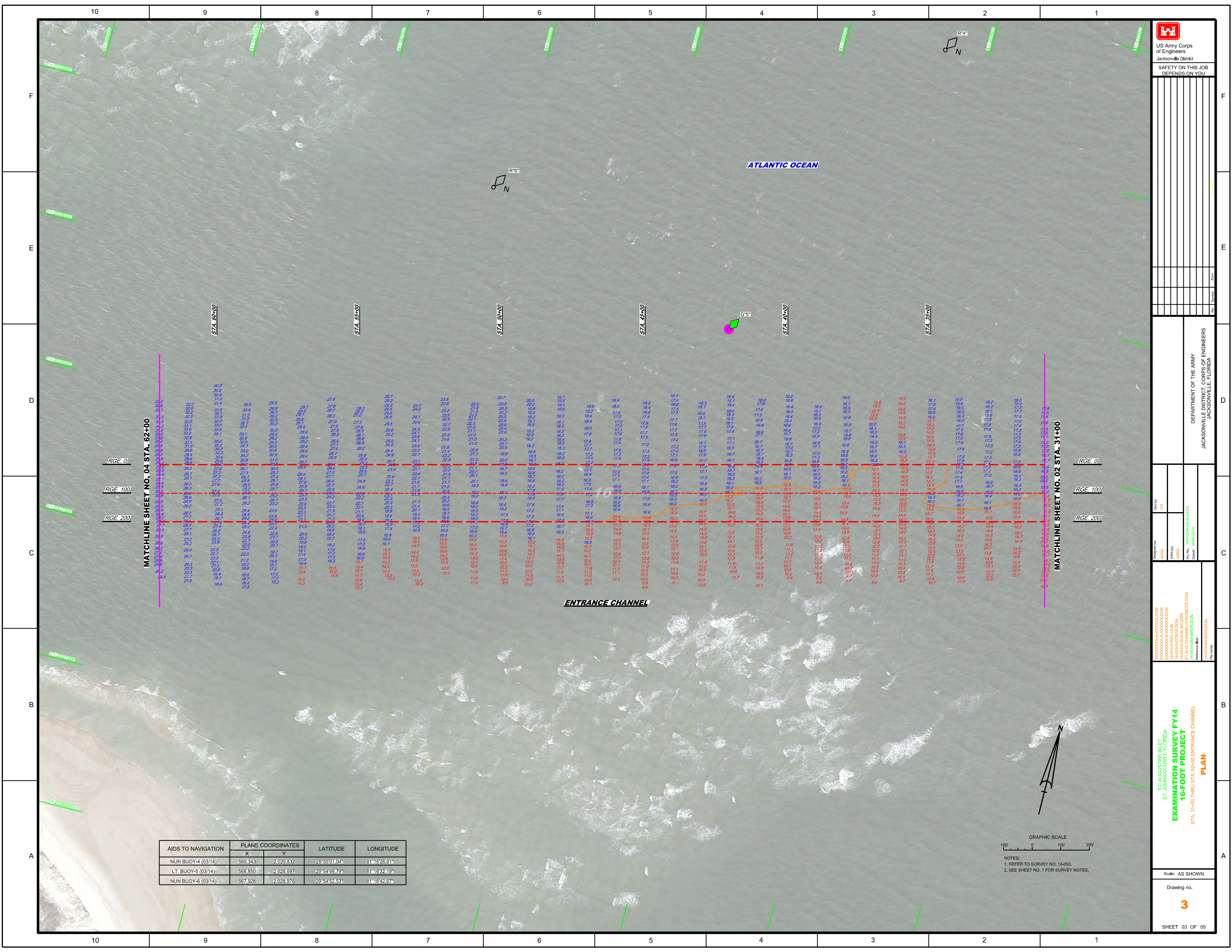
SHEET 03 OF 05

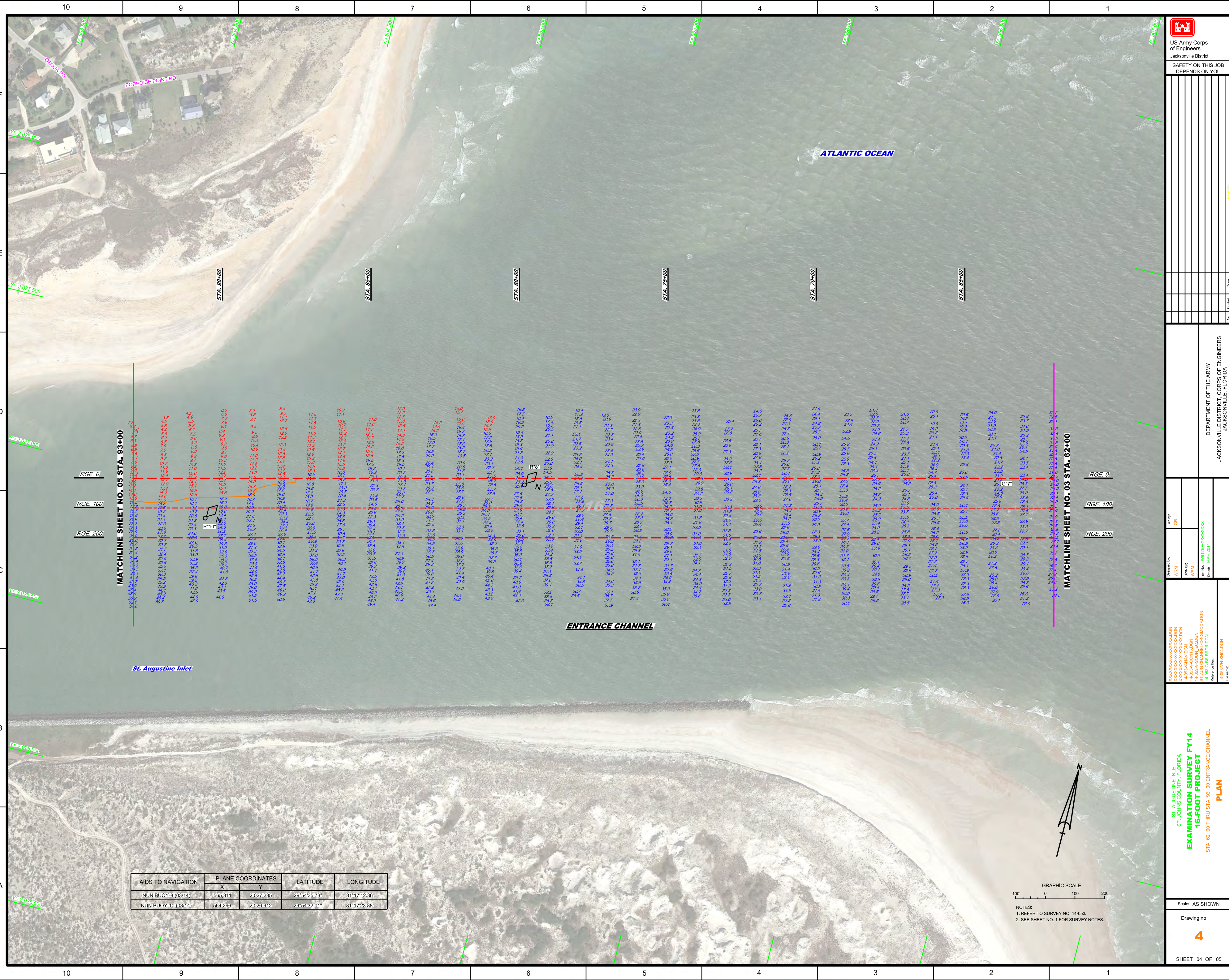
MATCHLINE SHEET NO. 04 STA. 62+00

MATCHLINE SHEET NO. 02 STA. 31+00

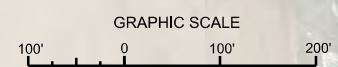
ATLANTIC OCEAN

ENTRANCE CHANNEL

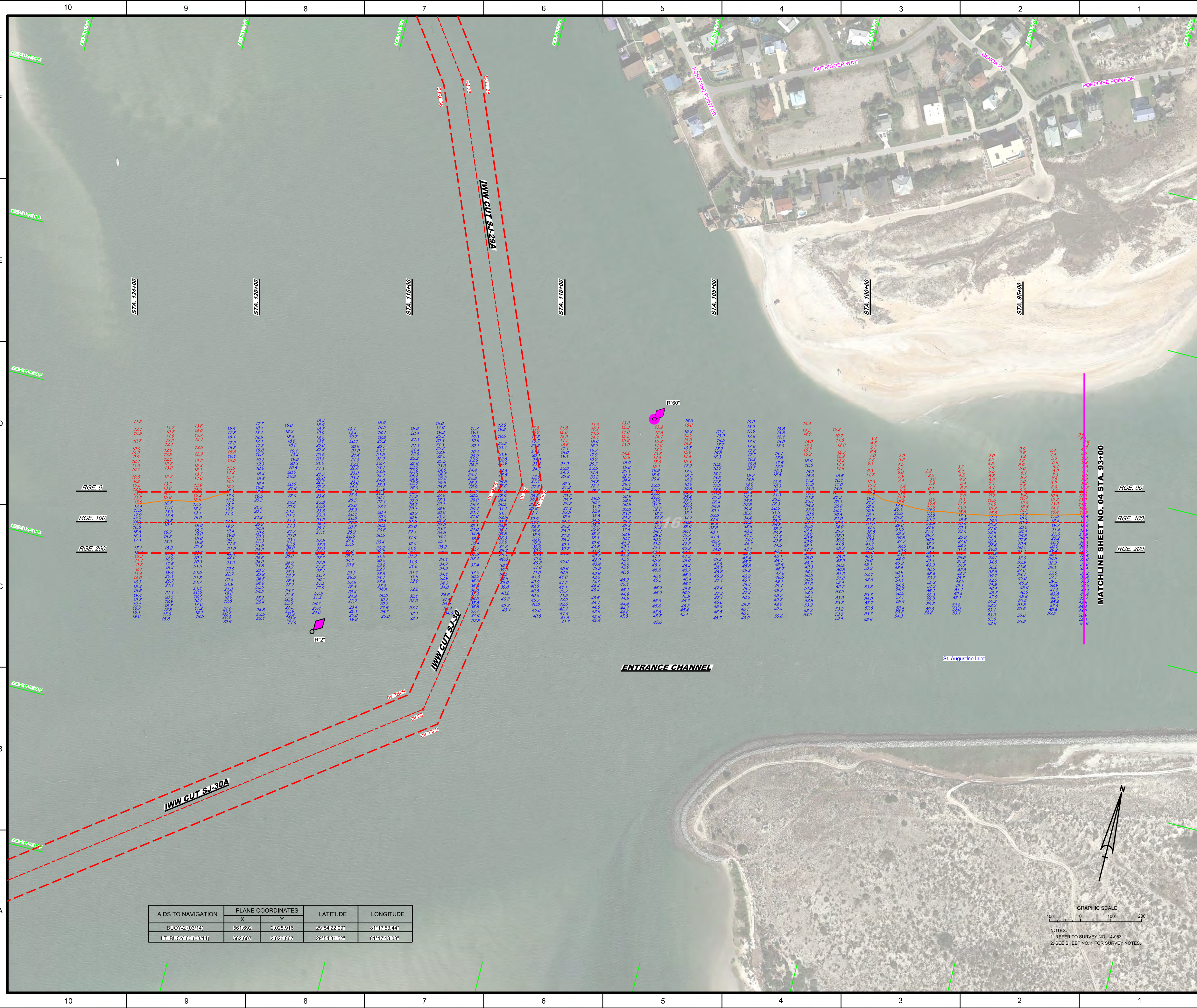




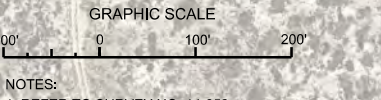
AIDS TO NAVIGATION	PLANE COORDINATES		LATITUDE	LONGITUDE
	X	Y		
NUN BUOY-8 (03/14)	565,311	2,027,285	29°54'35.73"	81°17'12.36"
NUN BUOY-10 (03/14)	564,296	2,026,912	29°54'32.01"	81°17'23.88"



NOTES:
 1. REFER TO SURVEY NO. 14-053.
 2. SEE SHEET NO. 1 FOR SURVEY NOTES.



AIDS TO NAVIGATION	PLANE COORDINATES		LATITUDE	LONGITUDE
	X	Y		
BUOY-2 (0314)	561.692	2,025.916	29°54'22.09"	81°17'53.44"
LT. BUOY-50 (0314)	562.607	2,026.867	29°54'31.52"	81°17'43.08"



NOTES:
 1. REFER TO SURVEY NO. 14-053.
 2. SEE SHEET NO. 1 FOR SURVEY NOTES.