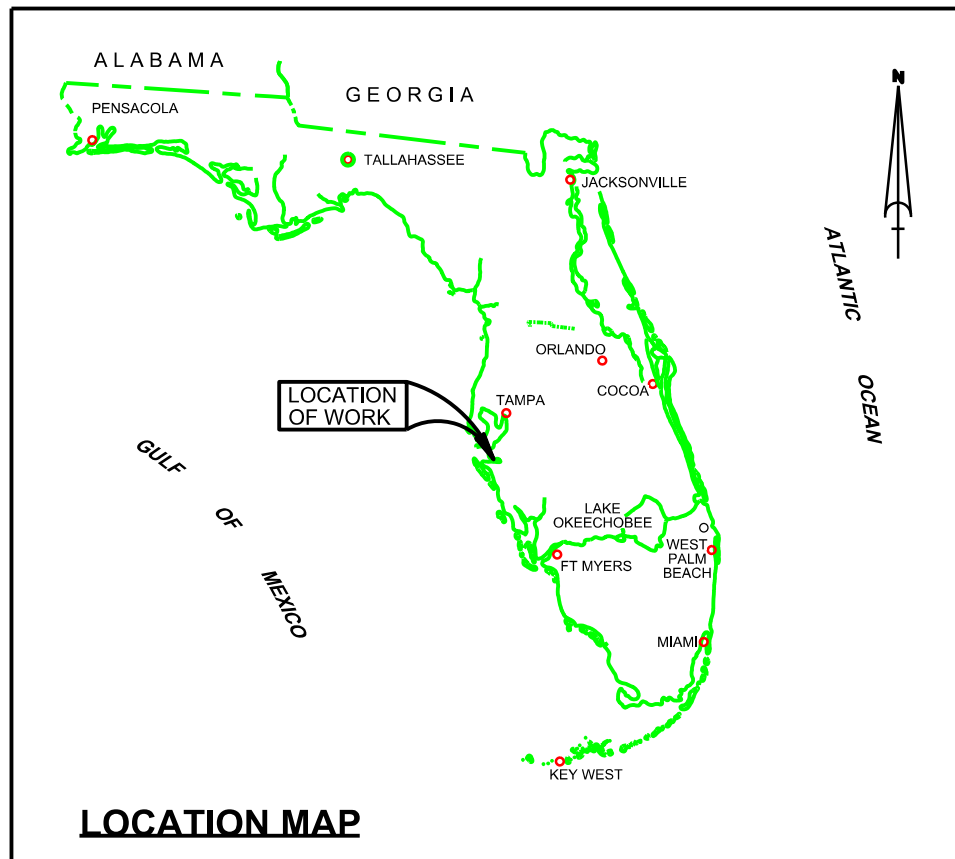


F
E
D
C
B
A



SHEET INDEX



BIG BEND CHANNEL (TAMPA HARBOR) HILLSBOROUGH COUNTY, FLORIDA EXAMINATION SURVEY FY14 35-FOOT PROJECT

SURVEY NOTES

- REFER TO SURVEY NO. 14-029.
- SOUNDINGS ARE IN FEET AND TENTHS AND REFER TO NOAA'S REPORTED MEAN LOWER LOW WATER (MLLW) OF THE 1983-2001 TIDAL EPOCH.
- TIDAL REDUCTIONS WERE OBTAINED UTILIZING A REAL-TIME KINEMATIC (RTK) GPS AND REFERENCED TO MLLW UTILIZING A HYPACK KINEMATIC TIDE DATUM (KTD) MODEL. KTD FILE NAME IS: "SPC-FL-WEST-2010-12-07.KTD".
- ALL ELEVATIONS ARE BELOW THE CHART DATUM UNLESS PRECEDED BY A (+) SIGN.
- PLANE COORDINATES ARE BASED ON THE TRANSVERSE MERCATOR PROJECTION FOR THE WEST ZONE OF FLORIDA AND REFERENCED TO NORTH AMERICAN DATUM OF 1983 (NAD83).
- ALL AZIMUTHS ARE GRID; RECKONED CLOCKWISE FROM SOUTH.
- ALL STATIONING REFERS TO THE CENTERLINE OF THE CHANNEL.
- THIS SURVEY WAS PERFORMED USING REAL-TIME KINEMATIC (RTK) GPS POSITIONING WITH THE FOLLOWING REFERENCE BASE LOCATION:
REFERENCE BASE LOCATED AT "872 6562 B TIDAL" (PID# AG7604)
- DEPTH SOUNDINGS BY THIS SURVEY ARE REFERENCED TO MLLW, TIDAL EPOCH 1983-2001 AS REPORTED BY THE NATIONAL OCEANIC AND ATMOSPHERIC ADMINISTRATION (NOAA). NOAA'S VDATUM MODEL WAS USED AND CALIBRATED TO THE PUBLISHED MLLW HEIGHTS OF THE BENCHMARKS ASSOCIATED WITH THE TIDE GAGE SITES SPECIFIED BELOW:
NOAA TIDAL STATION 872 6562 A TIDAL (PID# AG7605) USED FOR ALL CUTS.
VERTICAL MEASUREMENTS WERE MADE USING A ROSS SMARTSOUNDER DUAL-FREQUENCY 28/200 KHZ SINGLE-BEAM TRANSDUCER. ALL SOUNDINGS SHOWN ARE IN LOW FREQUENCY.
- VESSSEL DATE OF SURVEY CUT
WB-34 25-26 JAN 2014 E.C., AGRICO BERTHING AREA,
JACKSONVILLE 22, 24 JAN 2014 INNER CUTS 1 & 2
ENTRANCE CHANNEL
- AIDS TO NAVIGATION WERE LOCATED DURING THIS SURVEY.
- THE INFORMATION DEPICTED ON THIS MAP REPRESENTS THE RESULTS OF SURVEYS MADE ON THE DATES INDICATED ABOVE AND CAN ONLY BE CONSIDERED AS INDICATING THE GENERAL CONDITIONS AT THAT TIME. THIS CHART IS SOLELY FOR THE DISTRIBUTION OF AVAILABLE DEPTHS AT THE TIME OF THE SURVEY AND IS NOT TO BE USED FOR NAVIGATION.
- SURVEY ACCURACY PERFORMANCE STANDARDS, QUALITY CONTROL, AND QUALITY ASSURANCE REQUIREMENTS WERE FOLLOWED DURING THIS SURVEY IN ACCORDANCE WITH USACE EM 1110-2-1003, HYDROGRAPHIC SURVEYING, 1 JAN 02.

LEGEND	
	MONUMENT
	LIGHTED BEACON
	GREEN DAYBEACON
	RED DAYBEACON
	RED LIGHTED BUOY
	GREEN LIGHTED BUOY
	CAN BUOY
	NUN BUOY
	TIDE STAFF
	PROJECT DEPTH

US Army Corps of Engineers
Jacksonville District
SAFETY ON THIS JOB
DEPENDS ON YOU

Checked by	GR
Designed by	WRM
Drawn by	WRM
In. File	DD:MMYY.YYYY
Project	DD:MMYY.YYYY
Reference File	H4026YH407.DGN
File Name	H4026YH407.DGN

DEPARTMENT OF THE ARMY
JACKSONVILLE DISTRICT, CORPS OF ENGINEERS
JACKSONVILLE, FLORIDA

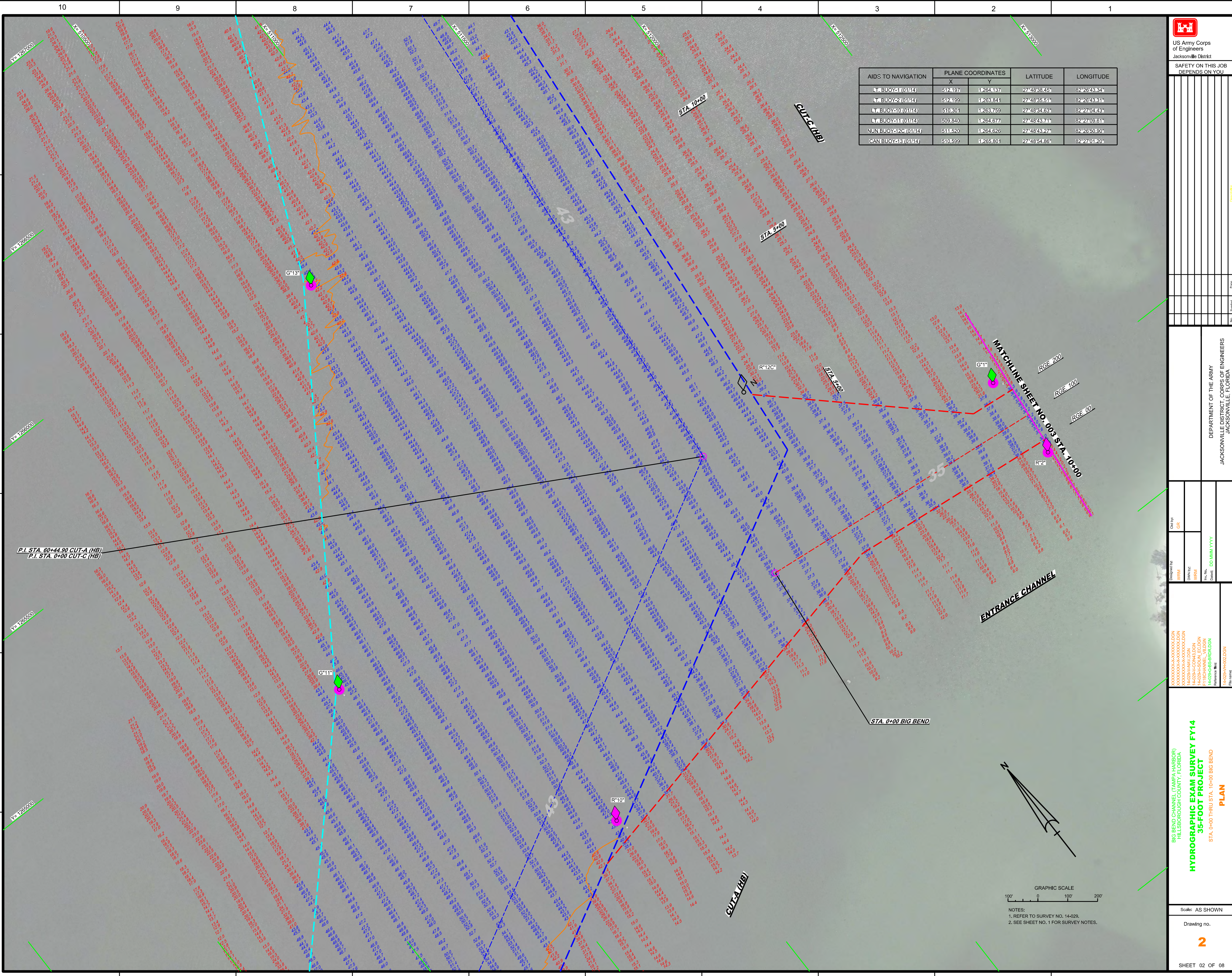
Big Bend Channel (Tampa Harbor)
Hillsborough County, Florida
**HYDROGRAPHIC EXAM SURVEY FY14
35-FOOT PROJECT**
INDEX, LOCATION AND VICINITY

Scale: AS SHOWN
Drawing no.
1

SHEET 01 OF 08

10 9 8 7 6 5 4 3 2 1

AIDS TO NAVIGATION	PLANE COORDINATES		LATITUDE	LONGITUDE
	X	Y		
■ BUOY#1(0144)	512.197	1264.137	27°48'38.45"	82°28'43.34"
■ BUOY#2(0144)	512.199	1263.841	27°48'35.51"	82°28'43.31"
■ BUOY#10(0144)	510.301	1263.759	27°48'34.63"	82°27'04.43"
■ BUOY#11(0144)	509.840	1264.677	27°48'43.71"	82°27'09.61"
■ NUN BUOY#12C(0144)	511.620	1264.626	27°48'43.27"	82°26'50.90"
■ CAN BUOY#13(0144)	510.599	1265.801	27°48'54.86"	82°27'01.20"



DEPARTMENT OF THE ARMY
JACKSONVILLE DISTRICT, CORPS OF ENGINEERS
JACKSONVILLE, FLORIDA

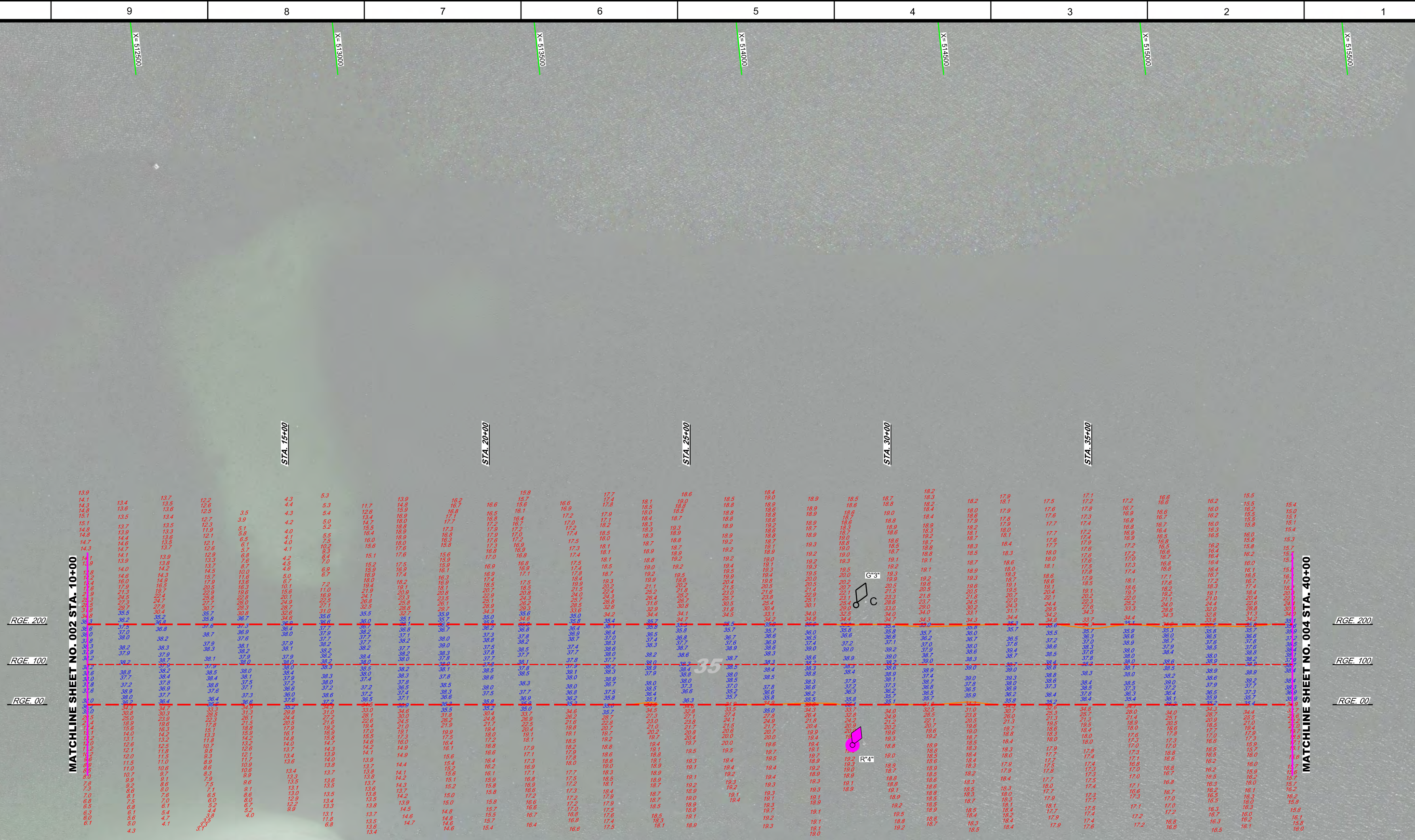
Checked by: GRL
Designed by: WRM
Drawn by: WRM
In Charge: DD/AMM/VYYY

BIG BEND CHANNEL (TAMPA HARBOR)
HILLSBOROUGH COUNTY, FLORIDA
HYDROGRAPHIC EXAM SURVEY FY14
35-FOOT PROJECT
STA. 0+00 THRU STA. 10+00 BIG BEND
PLAN

Scale: AS SHOWN
Drawing no. **2**
SHEET 02 OF 08



NOTES:
1. REFER TO SURVEY NO. 14-029.
2. SEE SHEET NO. 1 FOR SURVEY NOTES.



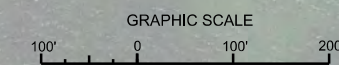
MATCHLINE SHEET NO. 002 STA. 10+00

MATCHLINE SHEET NO. 004 STA. 40+00

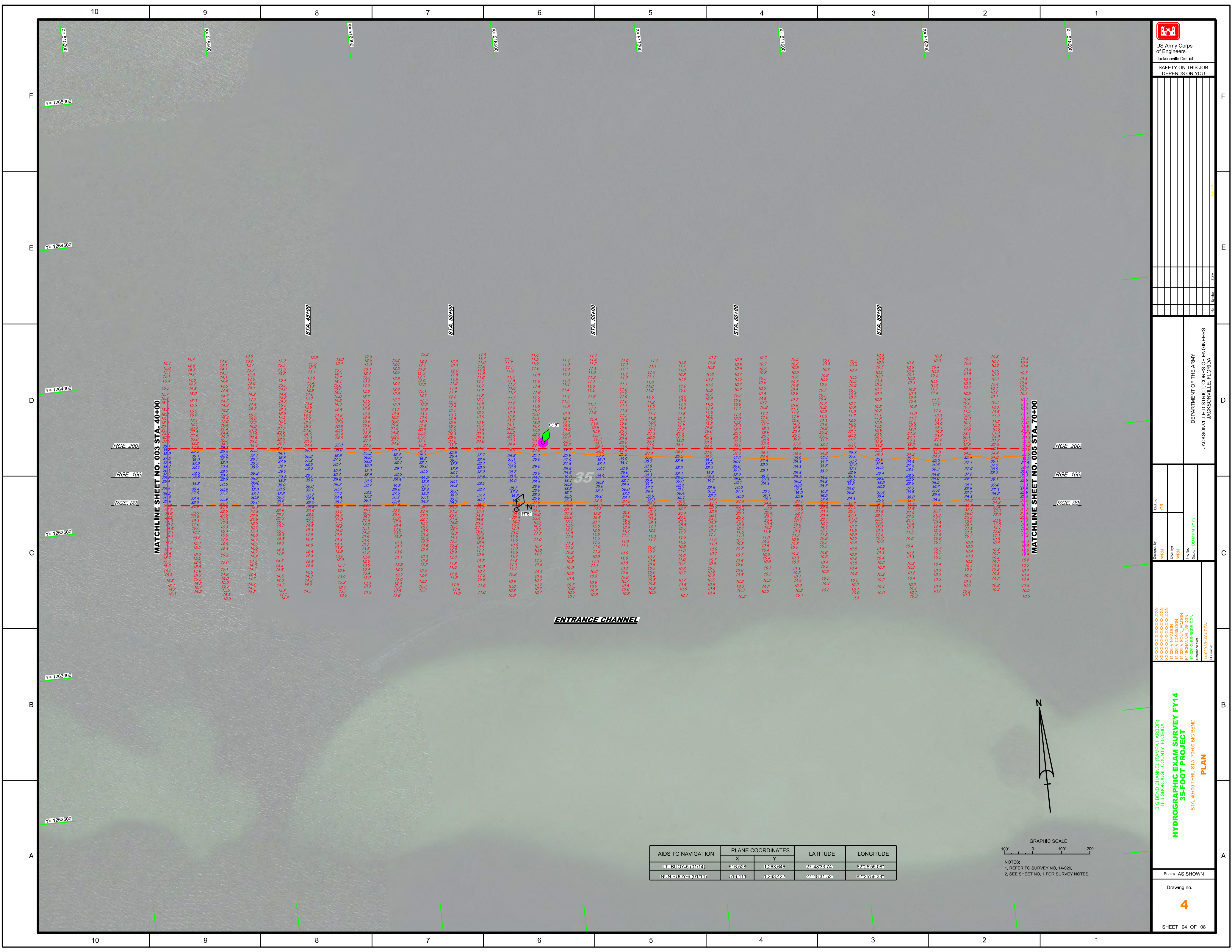
ENTRANCE CHANNEL



AIDS TO NAVIGATION	PLANE COORDINATES		LATITUDE	LONGITUDE
	X	Y		
CAN-BUOY-31(0114)	514,443	1263,926	27°48'36.43"	82°28'21.65"
CAN-BUOY-41(0114)	514,095	1263,580	27°48'33.00"	82°28'22.14"



NOTES:
1. REFER TO SURVEY NO. 14-029.
2. SEE SHEET NO. 1 FOR SURVEY NOTES.



MATCHLINE SHEET NO. 003 STA. 40+00

MATCHLINE SHEET NO. 005 STA. 70+00

US Army Corps of Engineers
Jacksonville District
SAFETY ON THIS JOB
DEPENDS ON YOU

DEPARTMENT OF THE ARMY
JACKSONVILLE DISTRICT, CORPS OF ENGINEERS
JACKSONVILLE, FLORIDA

Checked by:	GR
Designed by:	GR
Drawn by:	GR
Field Notes:	DD MM/YY
Checked:	DD MM/YY

BIG BEND CHANNEL (TAMPA HARBOR)
HILLSBOROUGH COUNTY, FLORIDA

HYDROGRAPHIC EXAM SURVEY FY14
35-FOOT PROJECT
STA. 40+00 THRU STA. 70+00 BIG BEND

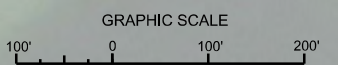
PLAN

Scale: AS SHOWN

Drawing no. **4**

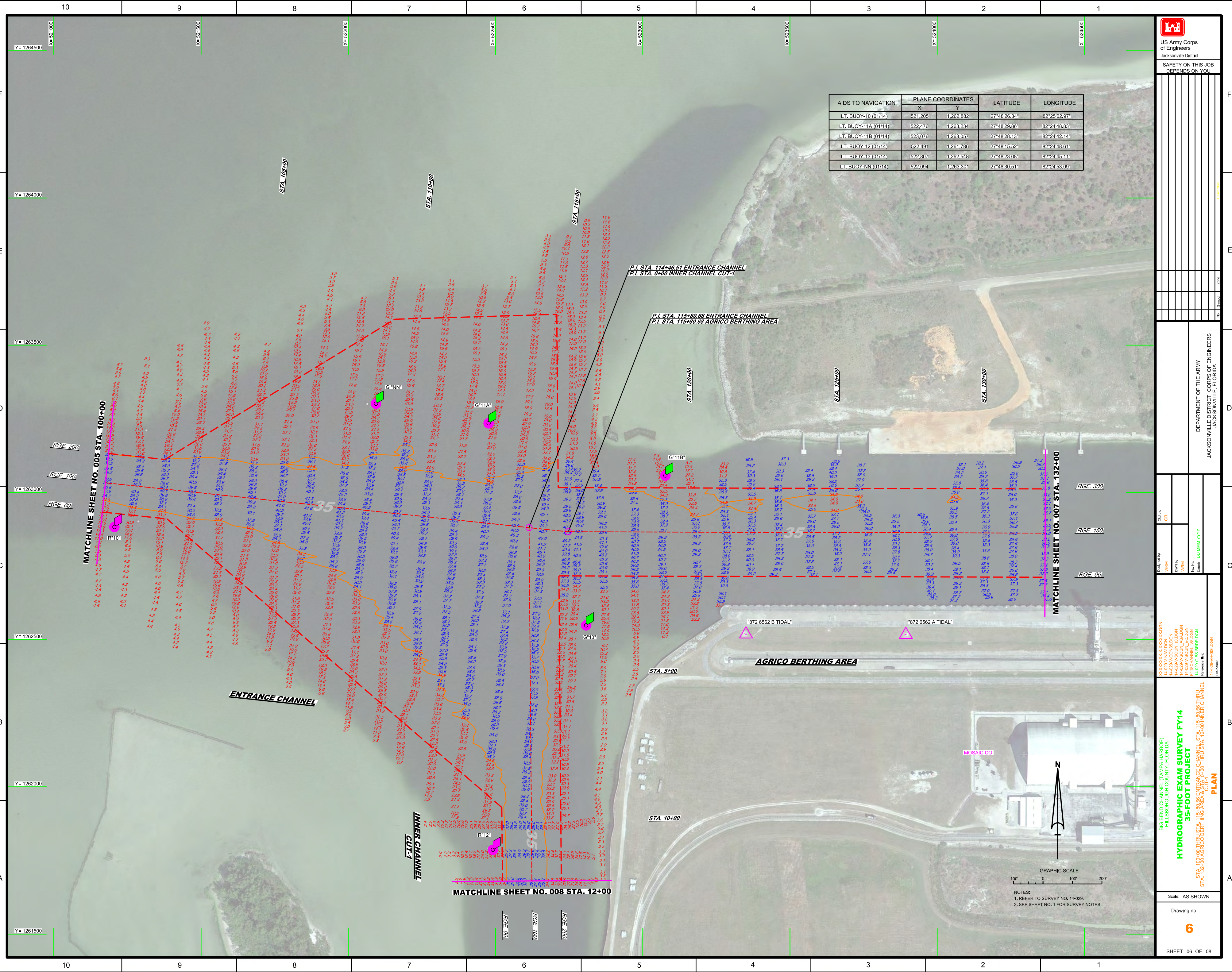
SHEET 04 OF 08

AIDS TO NAVIGATION	PLANE COORDINATES		LATITUDE	LONGITUDE
	X	Y		
NUN BUOY 25 (01/14)	516,528	1,263,646	27°48'33.74"	82°25'55.08"
NUN BUOY 26 (01/14)	516,641	1,263,422	27°48'31.52"	82°25'56.38"



NOTES:
1. REFER TO SURVEY NO. 14-029.
2. SEE SHEET NO. 1 FOR SURVEY NOTES.

AIDS TO NAVIGATION	PLANE COORDINATES		LATITUDE	LONGITUDE
	X	Y		
LT. BUOY-10 (01/14)	521,205	1,262,882	27°48'26.34"	82°25'02.97"
LT. BUOY-11A (01/14)	522,476	1,263,234	27°48'29.86"	82°24'48.83"
LT. BUOY-11B (01/14)	523,076	1,263,057	27°48'28.13"	82°24'42.14"
LT. BUOY-12 (01/14)	522,491	1,261,786	27°48'15.52"	82°24'48.61"
LT. BUOY-13 (01/14)	522,807	1,262,548	27°48'23.08"	82°24'45.11"
LT. BUOY-NN (01/14)	522,094	1,263,301	27°48'30.51"	82°24'53.09"

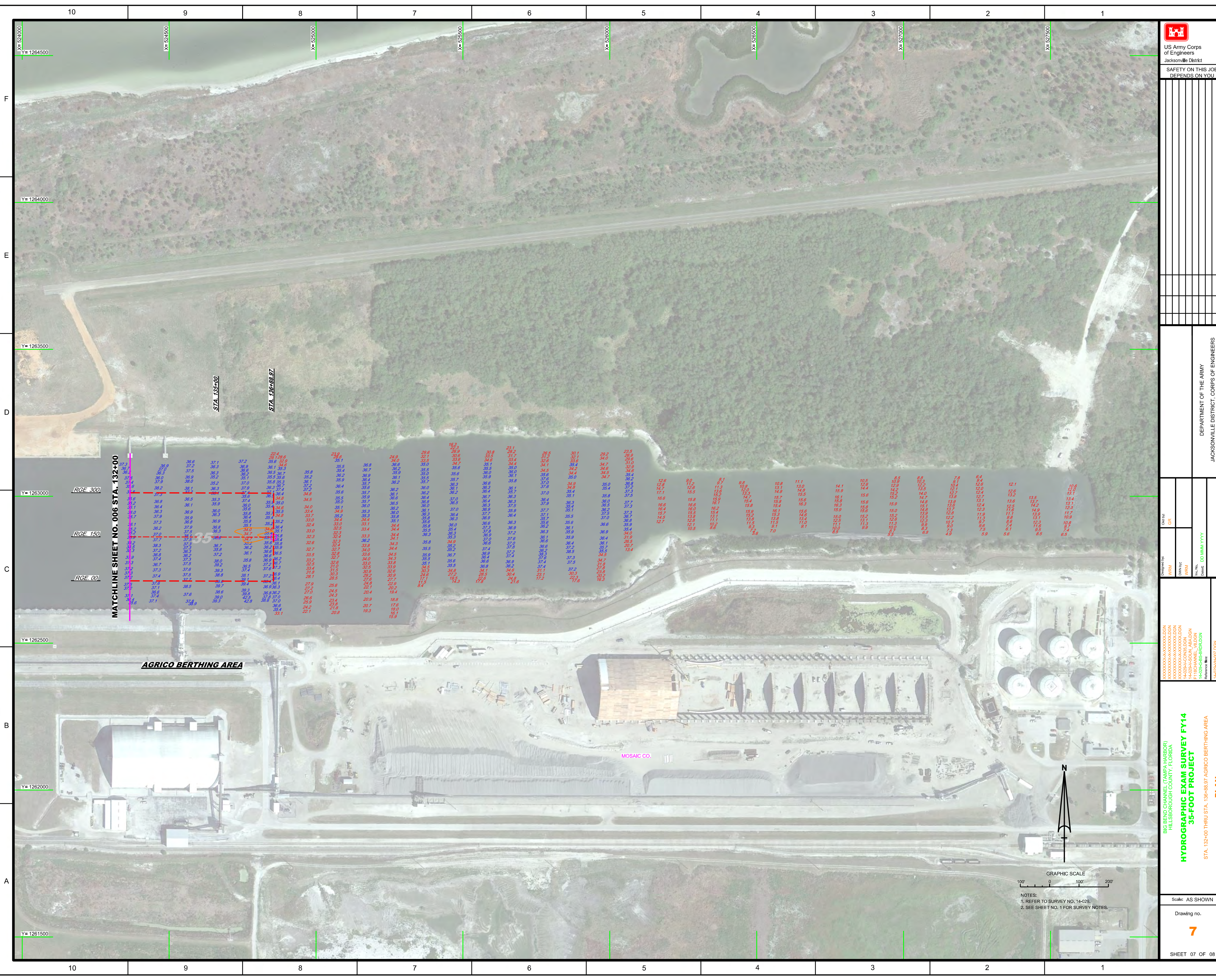


DEPARTMENT OF THE ARMY
JACKSONVILLE DISTRICT, CORPS OF ENGINEERS
JACKSONVILLE, FLORIDA

Hydrographic Exam Survey Fy14
35-Foot Project
STA. 100+00 THRU STA. 115+80.68 ENTRANCE CHANNEL, STA. 115+80.68 THRU STA. 132+00 INNER CHANNEL
STA. 132+00 THRU BERTHING AREA & STA. 100+00 THRU STA. 12+00 INNER CHANNEL


Scale: AS SHOWN
Drawing no. **6**
SHEET 06 OF 08

NOTES:
1. REFER TO SURVEY NO. 14-029.
2. SEE SHEET NO. 1 FOR SURVEY NOTES.



MATCHLINE SHEET NO. 006 STA. 132+00

Station	30.0	30.5	31.0	31.5	32.0	32.5	33.0	33.5	34.0	34.5	35.0	35.5	36.0	36.5	37.0	37.5	38.0	38.5	39.0	39.5	40.0	40.5	41.0	41.5	42.0	42.5	43.0	43.5	44.0	44.5	45.0	45.5	46.0	46.5	47.0	47.5	48.0	48.5	49.0	49.5	50.0	50.5	51.0	51.5	52.0	52.5	53.0	53.5	54.0	54.5	55.0	55.5	56.0	56.5	57.0	57.5	58.0	58.5	59.0	59.5	60.0	60.5	61.0	61.5	62.0	62.5	63.0	63.5	64.0	64.5	65.0	65.5	66.0	66.5	67.0	67.5	68.0	68.5	69.0	69.5	70.0	70.5	71.0	71.5	72.0	72.5	73.0	73.5	74.0	74.5	75.0	75.5	76.0	76.5	77.0	77.5	78.0	78.5	79.0	79.5	80.0	80.5	81.0	81.5	82.0	82.5	83.0	83.5	84.0	84.5	85.0	85.5	86.0	86.5	87.0	87.5	88.0	88.5	89.0	89.5	90.0	90.5	91.0	91.5	92.0	92.5	93.0	93.5	94.0	94.5	95.0	95.5	96.0	96.5	97.0	97.5	98.0	98.5	99.0	99.5	100.0
30.0	30.5	31.0	31.5	32.0	32.5	33.0	33.5	34.0	34.5	35.0	35.5	36.0	36.5	37.0	37.5	38.0	38.5	39.0	39.5	40.0	40.5	41.0	41.5	42.0	42.5	43.0	43.5	44.0	44.5	45.0	45.5	46.0	46.5	47.0	47.5	48.0	48.5	49.0	49.5	50.0	50.5	51.0	51.5	52.0	52.5	53.0	53.5	54.0	54.5	55.0	55.5	56.0	56.5	57.0	57.5	58.0	58.5	59.0	59.5	60.0	60.5	61.0	61.5	62.0	62.5	63.0	63.5	64.0	64.5	65.0	65.5	66.0	66.5	67.0	67.5	68.0	68.5	69.0	69.5	70.0	70.5	71.0	71.5	72.0	72.5	73.0	73.5	74.0	74.5	75.0	75.5	76.0	76.5	77.0	77.5	78.0	78.5	79.0	79.5	80.0	80.5	81.0	81.5	82.0	82.5	83.0	83.5	84.0	84.5	85.0	85.5	86.0	86.5	87.0	87.5	88.0	88.5	89.0	89.5	90.0	90.5	91.0	91.5	92.0	92.5	93.0	93.5	94.0	94.5	95.0	95.5	96.0	96.5	97.0	97.5	98.0	98.5	99.0	99.5	100.0	



US Army Corps
of Engineers
Jacksonville District

**SAFETY ON THIS JOB
DEPENDS ON YOU**

Designed by: GRL

Drawn by: GRL

Checked by: GRL

Scale: AS SHOWN

Project: HYDROGRAPHIC EXAM SURVEY FY14

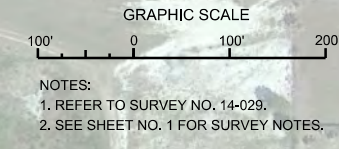
Area: AGRICO BERTHING AREA

Stationing: STA. 132+00 THRU STA. 136+88.97

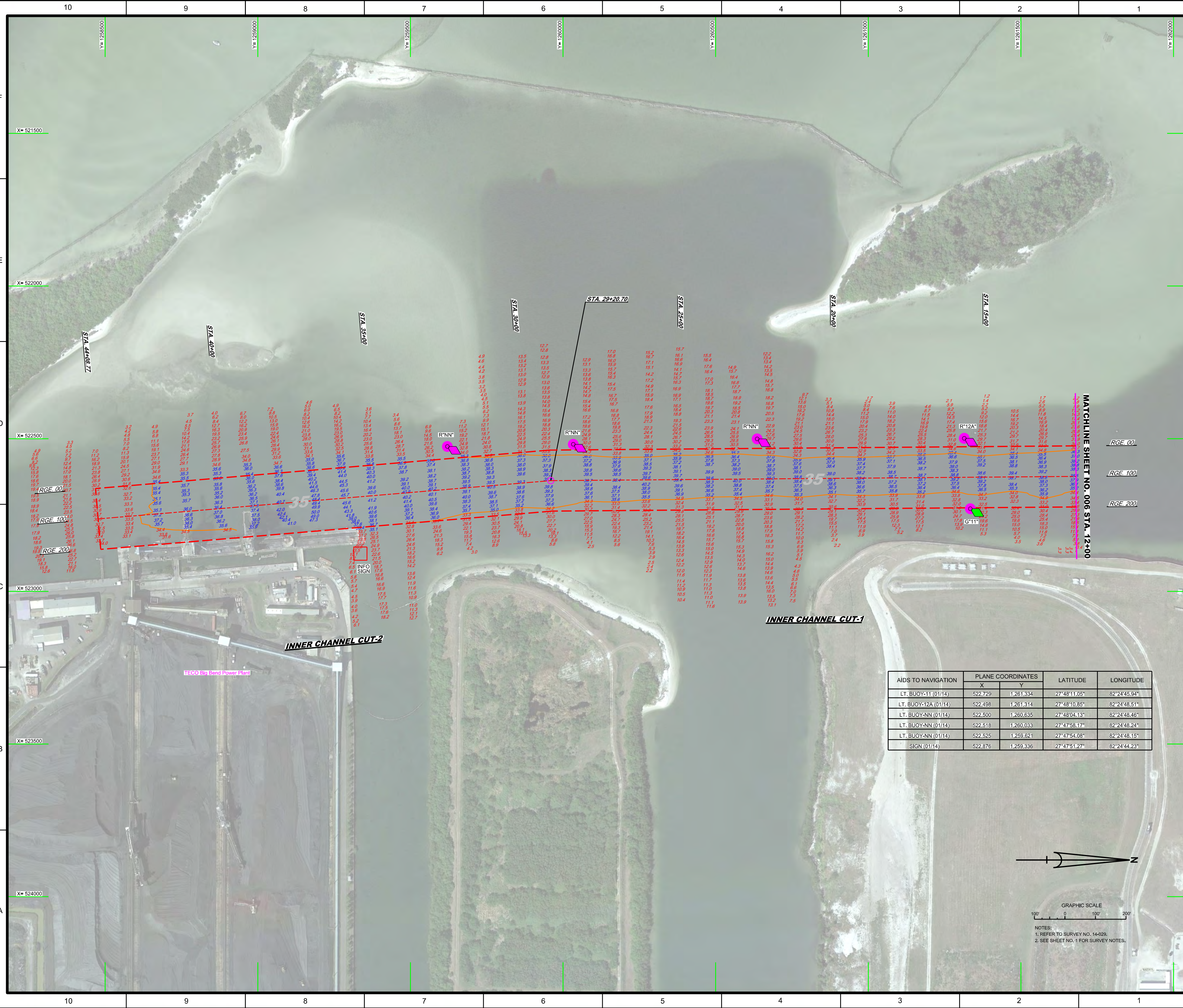
DEPARTMENT OF THE ARMY
JACKSONVILLE DISTRICT, CORPS OF ENGINEERS
JACKSONVILLE, FLORIDA

7

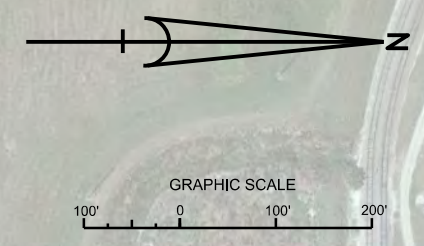
SHEET 07 OF 08



- NOTES:
 1. REFER TO SURVEY NO. 14-029.
 2. SEE SHEET NO. 1 FOR SURVEY NOTES.



AIDS TO NAVIGATION	PLANE COORDINATES		LATITUDE	LONGITUDE
	X	Y		
LT. BUOY-11 (01/14)	522,729	1,261,334	27°48'11.05"	82°24'45.94"
LT. BUOY-12A (01/14)	522,498	1,261,314	27°48'10.85"	82°24'48.51"
LT. BUOY-NN (01/14)	522,500	1,260,635	27°48'04.13"	82°24'48.46"
LT. BUOY-NN (01/14)	522,518	1,260,033	27°47'58.17"	82°24'48.24"
LT. BUOY-NN (01/14)	522,525	1,259,621	27°47'54.08"	82°24'48.15"
SIGN (01/14)	522,876	1,259,336	27°47'51.27"	82°24'44.23"



NOTES:
1. REFER TO SURVEY NO. 14-029.
2. SEE SHEET NO. 1 FOR SURVEY NOTES.