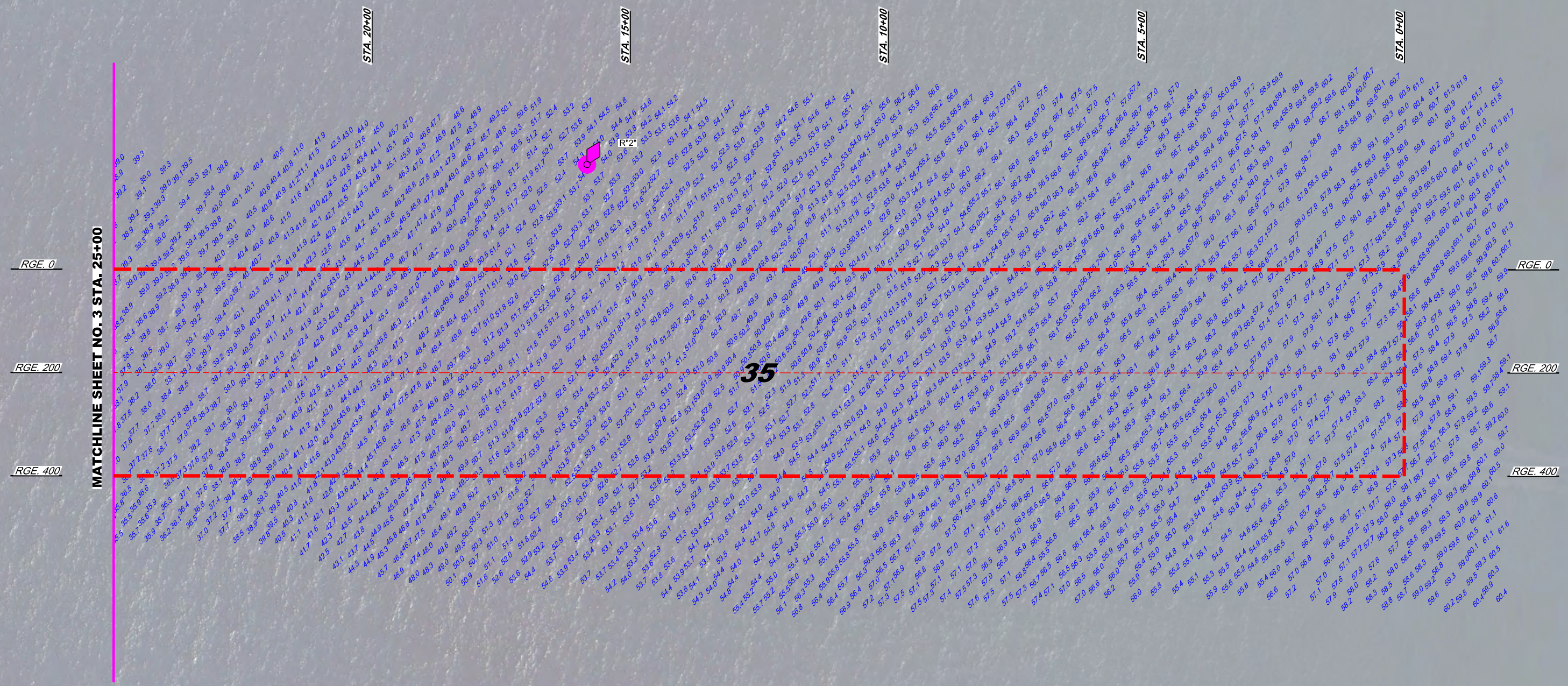
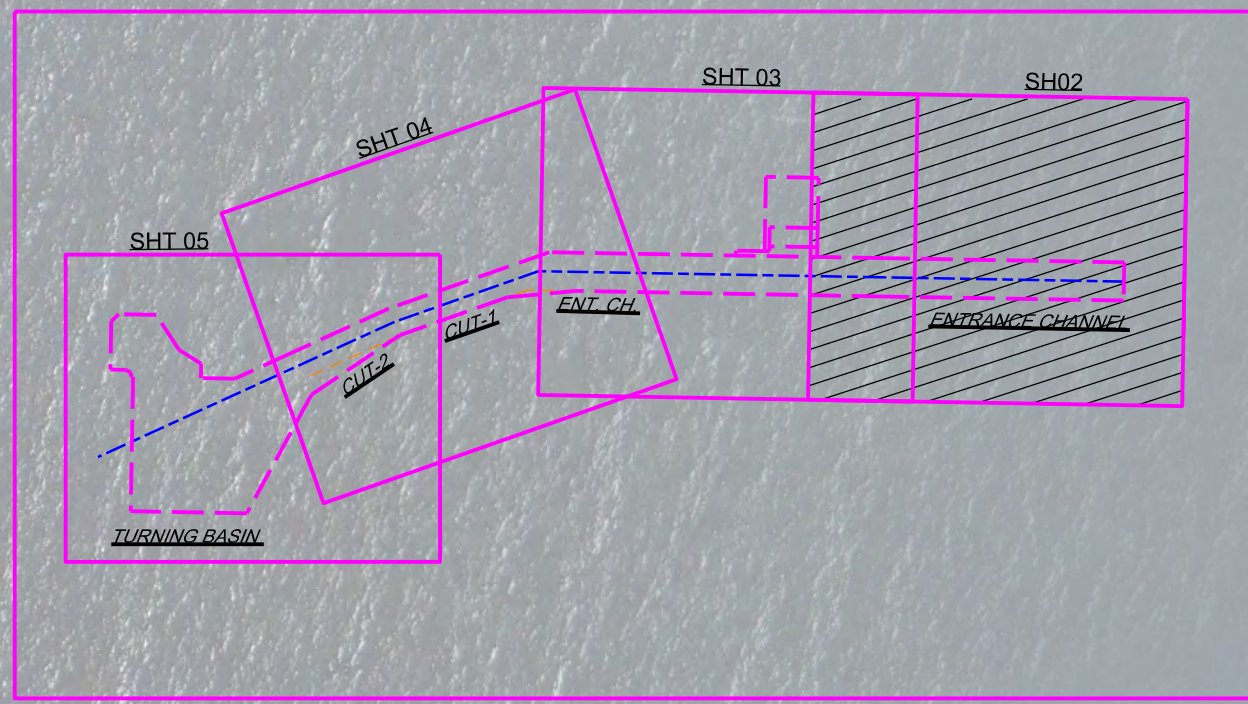
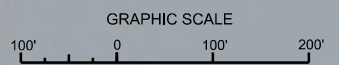



AIDS TO NAVIGATION	PLANE COORDINATES		LATITUDE	LONGITUDE
	X	Y		
LT. BUOY-2 (0913)	974,790	887,994	26°46'23.93"	80°01'24.46"



ENTRANCE CHANNEL



NOTES:
 1. REFER TO SURVEY NO. 14-019.
 2. SEE SHEET NO. 1 FOR SURVEY NOTES.



US Army Corps
of Engineers
Jacksonville District

SAFETY ON THIS JOB
DEPENDS ON YOU

DEPARTMENT OF THE ARMY
JACKSONVILLE DISTRICT, CORPS OF ENGINEERS
JACKSONVILLE, FLORIDA

13-184-AMV/DON
13-184-AMV/DON
PALM BEACH HARBOR/CANAL/CDON
14-019-ES-BIRD/DON

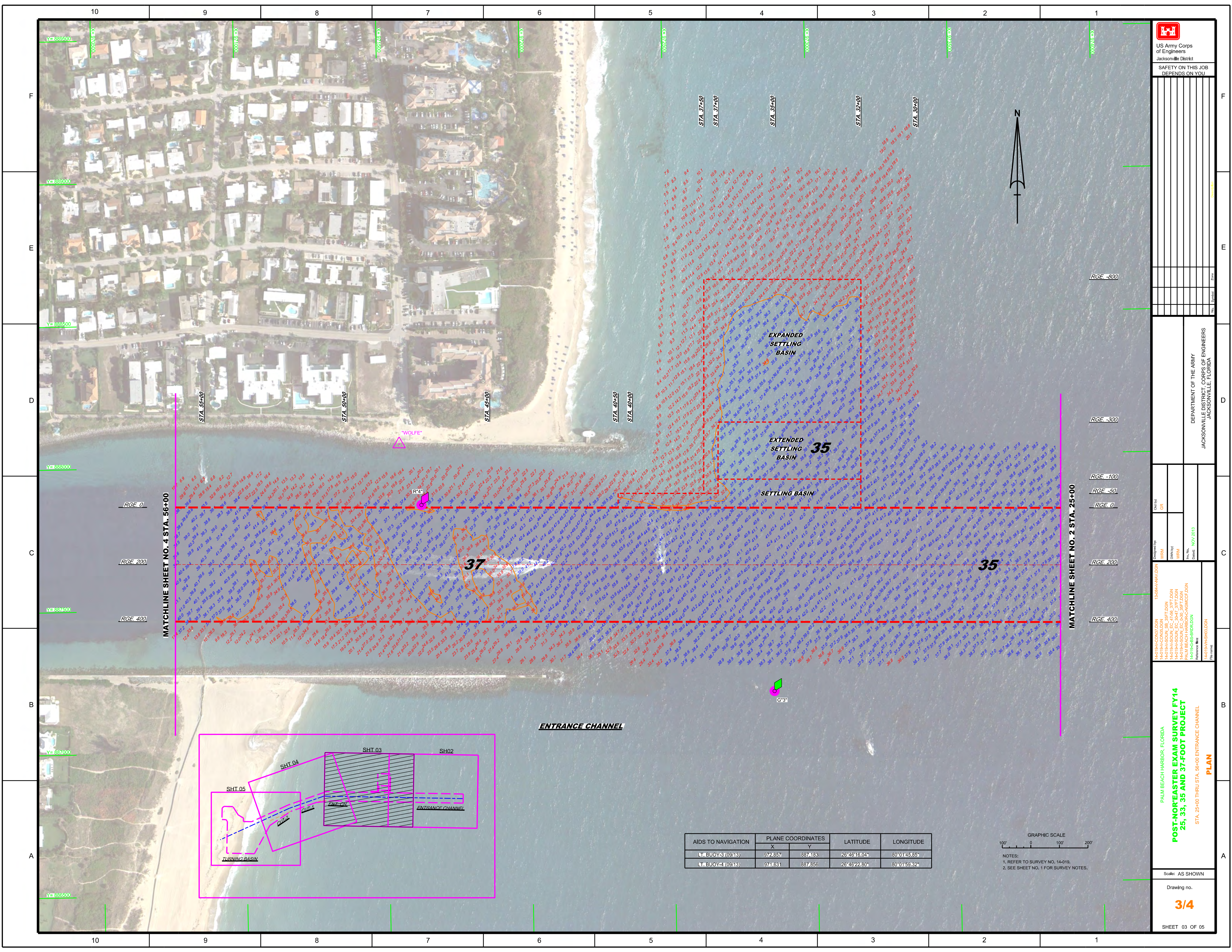
Reference: 14-019-AMV/DON


DESIGNED BY: WRM
 DRAWN BY: WRM
 CHECKED BY: WRM
 DATE: NOV 2013

Scale: AS SHOWN

Drawing no.
2/4

SHEET 02 OF 05




 US Army Corps of Engineers
 Jacksonville District
 SAFETY ON THIS JOB
 DEPENDS ON YOU

DEPARTMENT OF THE ARMY
 JACKSONVILLE, FLORIDA

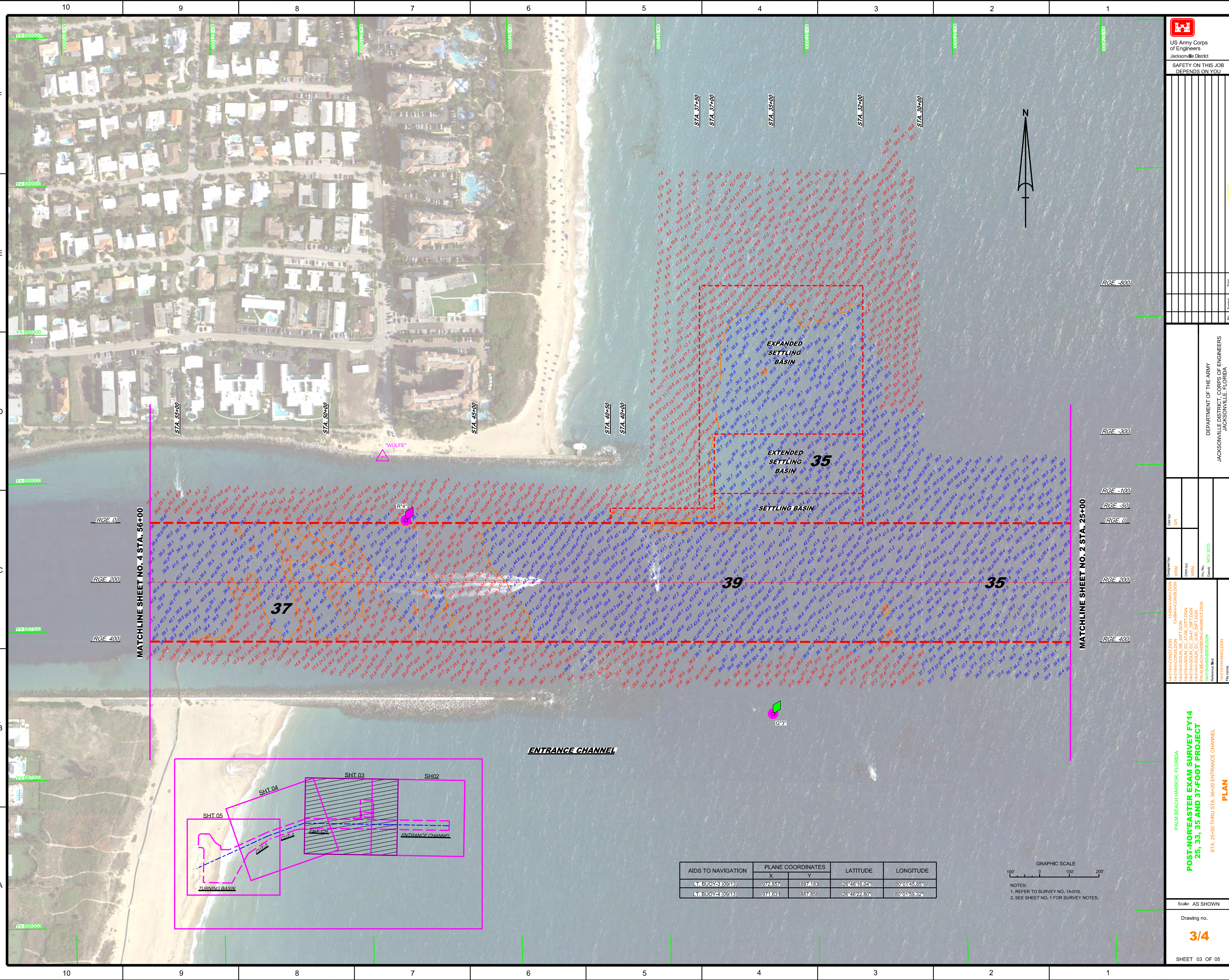
Call by: GRL
 Designed by: 13-084-VAN/J.DON
 WRM
 WRM
 WRM
 Date: NOV 2013

PALM BEACH HARBOR, FLORIDA
POST-NOR'EASTER EXAM SURVEY FY14
25, 33, 35 AND 37-FOOT PROJECT
 STA. 25+00 THRU STA. 35+00 ENTRANCE CHANNEL
PLAN

Scale: AS SHOWN
 Drawing no.
3/4
 SHEET 03 OF 05

AIDS TO NAVIGATION	PLANE COORDINATES		LATITUDE	LONGITUDE
	X	Y		
LT. BUOY-3 (09/13)	972,857	887,183	26°46'16.04"	80°01'45.85"
LT. BUOY-4 (09/13)	971,631	887,856	26°46'22.80"	80°01'59.32"

GRAPHIC SCALE
 100' 0 100' 200'
 NOTES:
 1. REFER TO SURVEY NO. 14-010.
 2. SEE SHEET NO. 1 FOR SURVEY NOTES.



US Army Corps of Engineers
Jacksonville District

SAFETY ON THIS JOB
DEPENDS ON YOU

DEPARTMENT OF THE ARMY
JACKSONVILLE DISTRICT, CORPS OF ENGINEERS
JACKSONVILLE, FLORIDA

Palm Beach Harbor, Florida
POST-NOR'EASTER EXAM SURVEY FY14
25, 33, 35 AND 37-FOOT CHANNEL
PLAN
STA. 25+00 THRU STA. 35+00 ENTRANCE CHANNEL

Scale: AS SHOWN
Drawing no.
3/4
SHEET 03 OF 05

Reference files:
14-0194-CON27.DGN
14-0194-CON28.DGN
14-0194-CON29.DGN
14-0194-CON30.DGN
14-0194-CON31.DGN
14-0194-CON32.DGN
14-0194-CON33.DGN
14-0194-CON34.DGN
14-0194-CON35.DGN
14-0194-CON36.DGN
14-0194-CON37.DGN
14-0194-CON38.DGN
14-0194-CON39.DGN
14-0194-CON40.DGN
14-0194-CON41.DGN
14-0194-CON42.DGN
14-0194-CON43.DGN
14-0194-CON44.DGN
14-0194-CON45.DGN
14-0194-CON46.DGN
14-0194-CON47.DGN
14-0194-CON48.DGN
14-0194-CON49.DGN
14-0194-CON50.DGN
14-0194-CON51.DGN
14-0194-CON52.DGN
14-0194-CON53.DGN
14-0194-CON54.DGN
14-0194-CON55.DGN
14-0194-CON56.DGN
14-0194-CON57.DGN
14-0194-CON58.DGN
14-0194-CON59.DGN
14-0194-CON60.DGN
14-0194-CON61.DGN
14-0194-CON62.DGN
14-0194-CON63.DGN
14-0194-CON64.DGN
14-0194-CON65.DGN
14-0194-CON66.DGN
14-0194-CON67.DGN
14-0194-CON68.DGN
14-0194-CON69.DGN
14-0194-CON70.DGN
14-0194-CON71.DGN
14-0194-CON72.DGN
14-0194-CON73.DGN
14-0194-CON74.DGN
14-0194-CON75.DGN
14-0194-CON76.DGN
14-0194-CON77.DGN
14-0194-CON78.DGN
14-0194-CON79.DGN
14-0194-CON80.DGN
14-0194-CON81.DGN
14-0194-CON82.DGN
14-0194-CON83.DGN
14-0194-CON84.DGN
14-0194-CON85.DGN
14-0194-CON86.DGN
14-0194-CON87.DGN
14-0194-CON88.DGN
14-0194-CON89.DGN
14-0194-CON90.DGN
14-0194-CON91.DGN
14-0194-CON92.DGN
14-0194-CON93.DGN
14-0194-CON94.DGN
14-0194-CON95.DGN
14-0194-CON96.DGN
14-0194-CON97.DGN
14-0194-CON98.DGN
14-0194-CON99.DGN
14-0194-CON00.DGN

AIDS TO NAVIGATION	PLANE COORDINATES		LATITUDE	LONGITUDE
	X	Y		
LT. BUOY-3 (09/13)	972.857	887.183	26°46'16.04"	80°01'45.85"
LT. BUOY-4 (09/13)	971.631	887.856	26°46'22.80"	80°01'59.32"

GRAPHIC SCALE
100' 0 100' 200'

NOTES:
1. REFER TO SURVEY NO. 14-019.
2. SEE SHEET NO. 1 FOR SURVEY NOTES.

