

STA. 193+55.88 T.C.
RCE -1484.84

STA. 191+56.87 T.C.
RCE -1182.88

STA. 189+57.86 T.C.
RCE -880.91

STA. 177+24.30 T.C.
RCE 589.92

STA. 176+16.78 T.C.
RCE 589.92

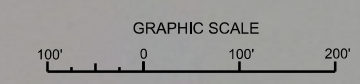
STA. 185+00

STA. 175+02.66 T.C.
RCE -589.19

STA. 180+00

MATCHLINE SHEET NO. 048 STA. 170+00

AIDS TO NAVIGATION	PLANE COORDINATES		LATITUDE	LONGITUDE
	X	Y		
LT-BUOY-20 (1210)	457.401	2416.163	30°18'55.24"	81°07'46.99"



NOTES:
1. REFER TO SURVEY NO. 14-001.
2. SEE SHEET NO. 1 FOR SURVEY NOTES.

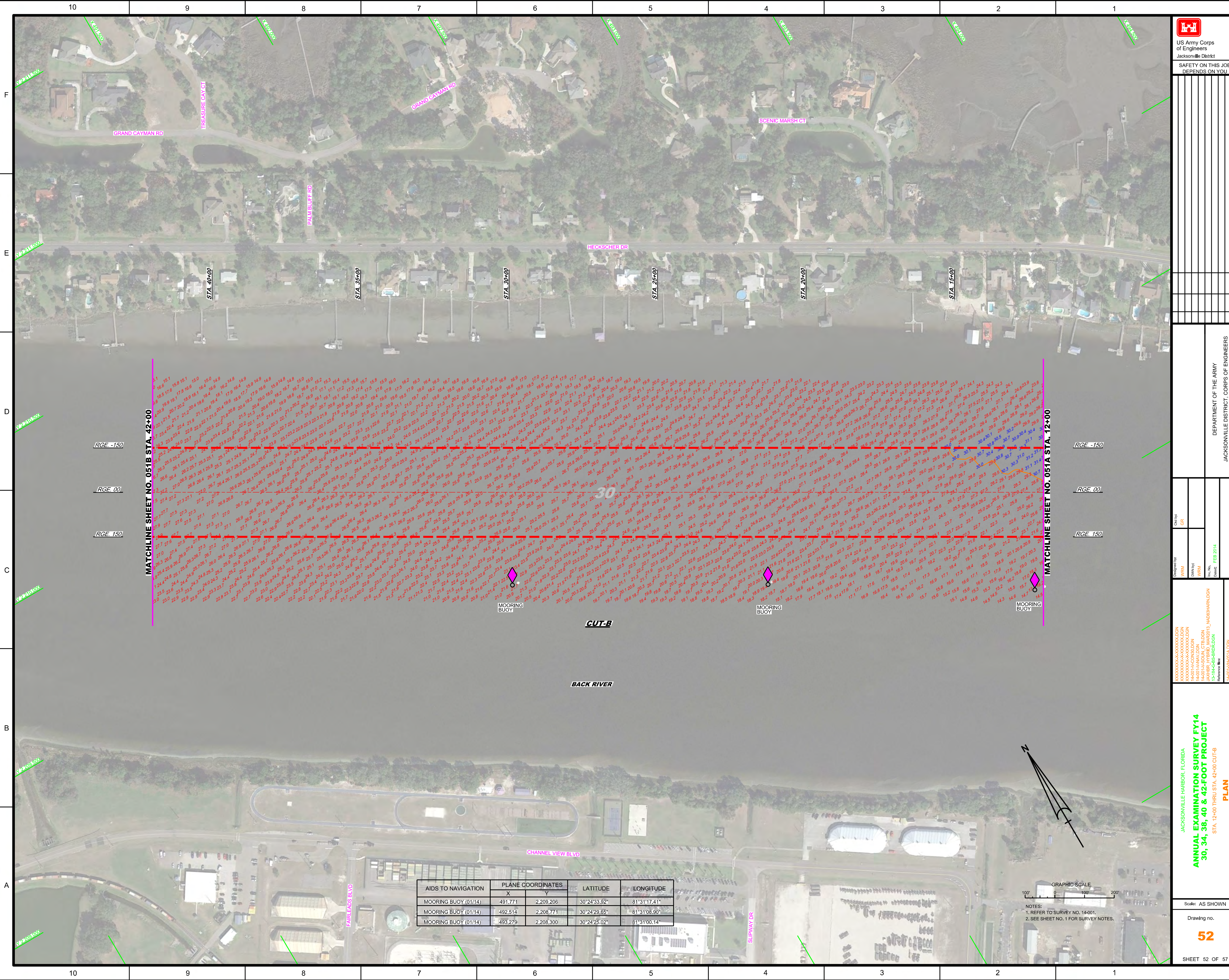
US Army Corps of Engineers
Jacksonville District
SAFETY ON THIS JOB
DEPENDS ON YOU


DEPARTMENT OF THE ARMY
JACKSONVILLE DISTRICT, CORPS OF ENGINEERS
JACKSONVILLE, FLORIDA

Call by: GRL
Designed by: WRM
Checked by: WRM
Drawn by: WRM
Title: ANNUAL EXAMINATION SURVEY FY14
Date: FEB 2014

JACKSONVILLE HARBOR, FLORIDA
**ANNUAL EXAMINATION SURVEY FY14
30, 34, 38, 40 & 42-FOOT PROJECT**
STA. 170+00 THRU STA. 191+56.87 TERMINAL CHANNEL
PLAN

Scale: AS SHOWN
Drawing no. **49**
SHEET 49 OF 57




 US Army Corps of Engineers
 Jacksonville District
 SAFETY ON THIS JOB
 DEPENDS ON YOU

DEPARTMENT OF THE ARMY
 JACKSONVILLE DISTRICT, CORPS OF ENGINEERS
 JACKSONVILLE, FLORIDA

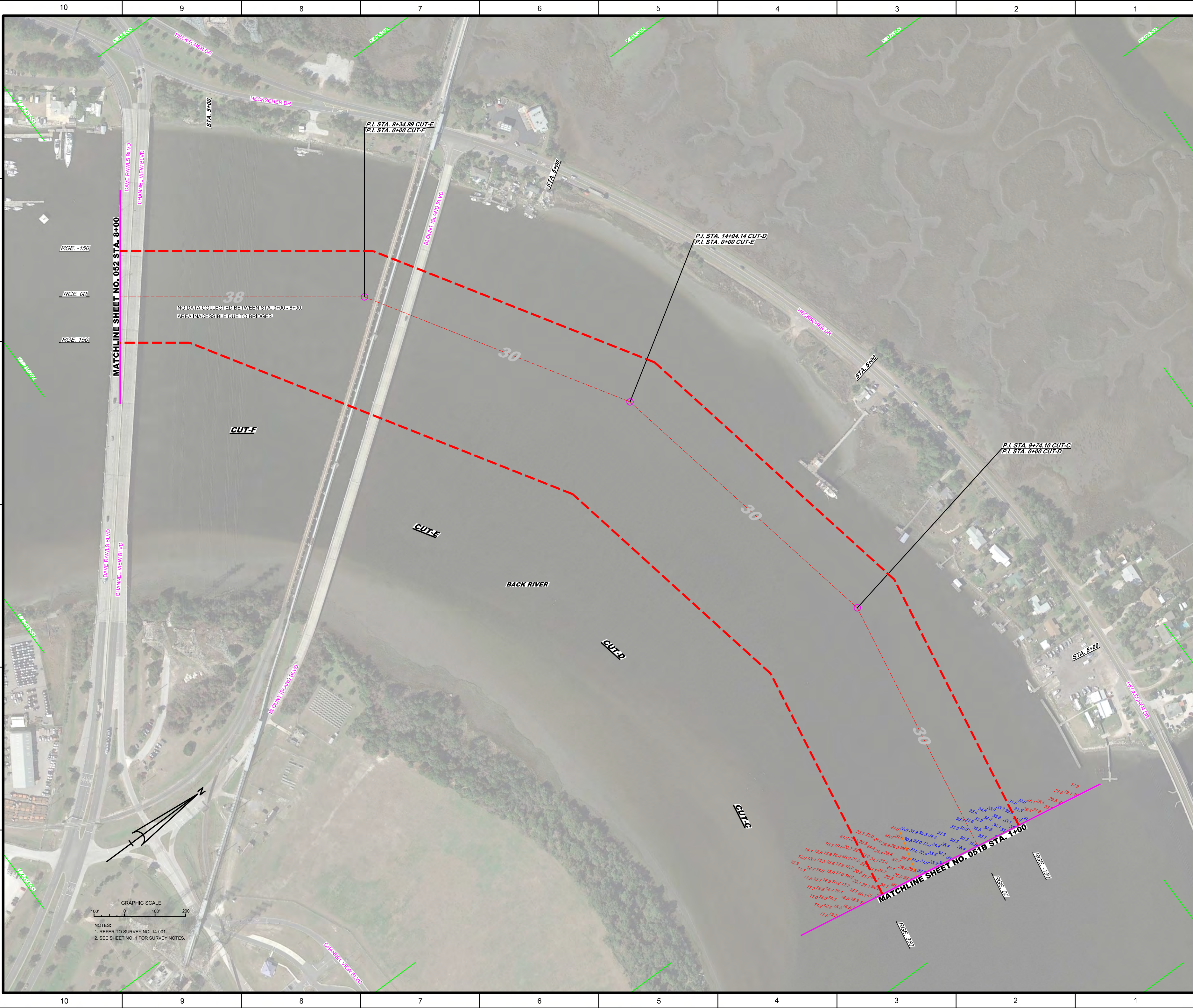
Call by: GRL
 Designed by: WRM
 Drawn by: WRM
 Checked by: WRM
 Date: FEB 2014

JACKSONVILLE HARBOR, FLORIDA
ANNUAL EXAMINATION SURVEY FY14
30, 34, 38, 40 & 42-FOOT PROJECT
 STA. 12+00 THRU STA. 42+00 CUT-B
PLAN
 Scale: AS SHOWN
 Drawing no. **52**
 SHEET 52 OF 57

AIDS TO NAVIGATION	PLANE COORDINATES		LATITUDE	LONGITUDE
	X	Y		
MOORING BUOY (01/14)	491.771	2.209.206	30°24'33.92"	81°31'17.41"
MOORING BUOY (01/14)	492.514	2.208.771	30°24'29.85"	81°31'08.90"
MOORING BUOY (01/14)	493.279	2.208.300	30°24'25.02"	81°31'00.14"



GRAPHIC SCALE
 100' 0 100 200'
 NOTES:
 1. REFER TO SURVEY NO. 14-001.
 2. SEE SHEET NO. 1 FOR SURVEY NOTES.



GRAPHIC SCALE
 0 100' 200'

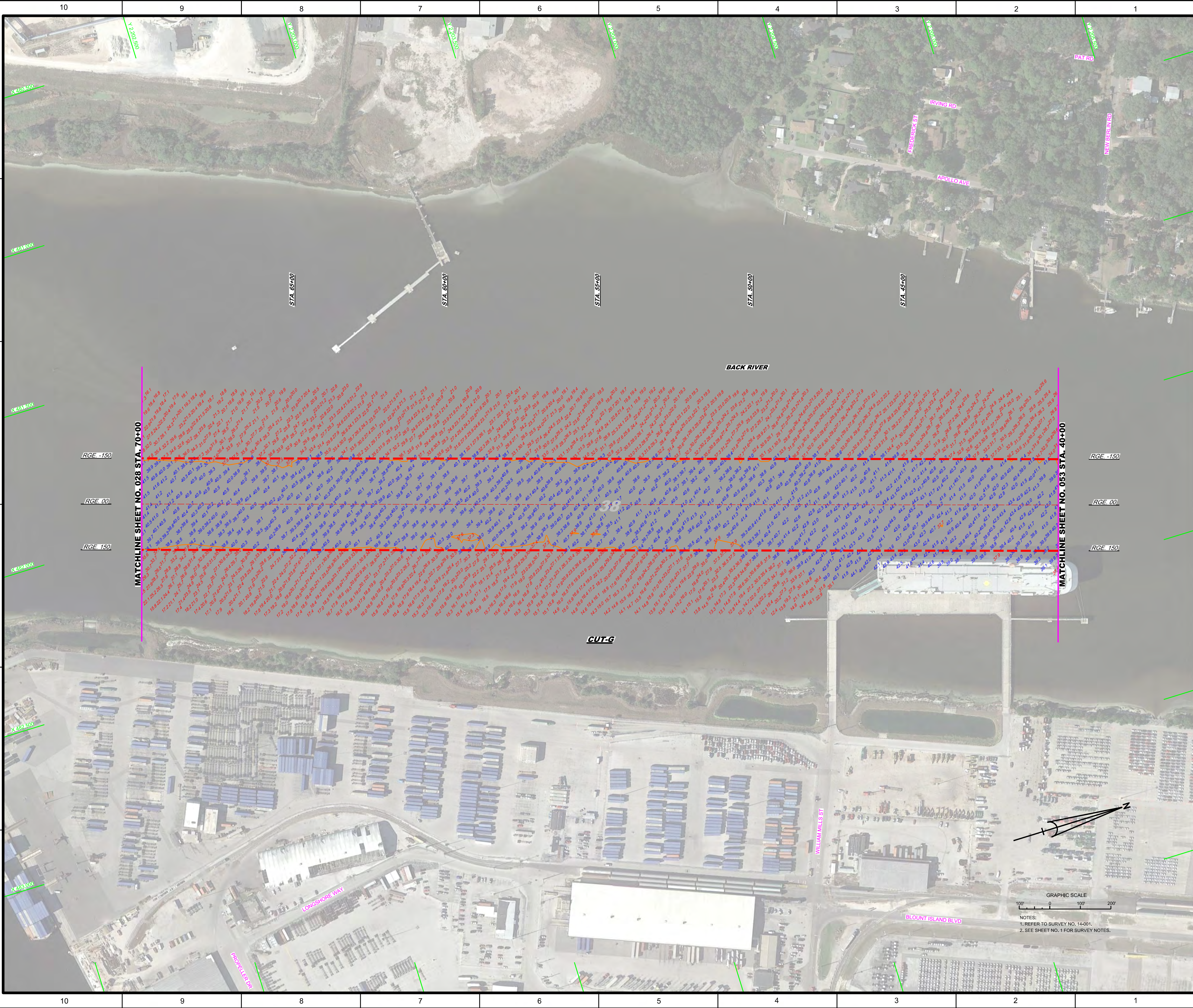
NOTES:
 1. REFER TO SURVEY NO. 14-001.
 2. SEE SHEET NO. 1 FOR SURVEY NOTES.


MATCHLINE SHEET NO. 052 STA. 8+00

MATCHLINE SHEET NO. 051B STA. 1+00

NO DATA COLLECTED BETWEEN STA. 0+00 - 8+00.
 AREA INACCESSIBLE DUE TO BRIDGES.

<p>US Army Corps of Engineers Jacksonville District</p>	
<p>SAFETY ON THIS JOB DEPENDS ON YOU</p>	
<p>DESIGNED BY WRM</p>	<p>CHECKED BY GRL</p>
<p>DRAWN BY WRM</p>	<p>DATE FEB 2014</p>
<p>PROJECT NO. 14-001-HARBOR-DGN</p>	
<p>PROJECT NAME JACKSONVILLE HARBOR, FLORIDA</p>	
<p>PROJECT DESCRIPTION ANNUAL EXAMINATION SURVEY FY14 30, 34, 38, 40 & 42-FOOT PROJECT</p>	
<p>PROJECT PLAN STA. 1+00 CUT-C THRU STA. 8+00 CUT-F</p>	
<p>SCALE: AS SHOWN</p>	
<p>DRAWING NO. 54</p>	
<p>SHEET 54 OF 57</p>	





 US Army Corps of Engineers

 Jacksonville District

 SAFETY ON THIS JOB

 DEPENDS ON YOU

DEPARTMENT OF THE ARMY

 JACKSONVILLE DISTRICT, CORPS OF ENGINEERS

 JACKSONVILLE, FLORIDA

Drawn by: GR

 Checked by: GR

 Date: FEB 2014

ANNUAL EXAMINATION SURVEY FY14

 30, 34, 38, 40 & 42-FOOT PROJECT

 STA. 40+00 THRU STA. 70+00 CUT-G

 PLAN

JACKSONVILLE HARBOR, FLORIDA

 Scale: AS SHOWN

 Drawing no.

57

 SHEET 57 OF 57

GRAPHIC SCALE

 100' 0 100' 200'

 NOTES:

 1. REFER TO SURVEY NO. 14-001.

 2. SEE SHEET NO. 1 FOR SURVEY NOTES.