



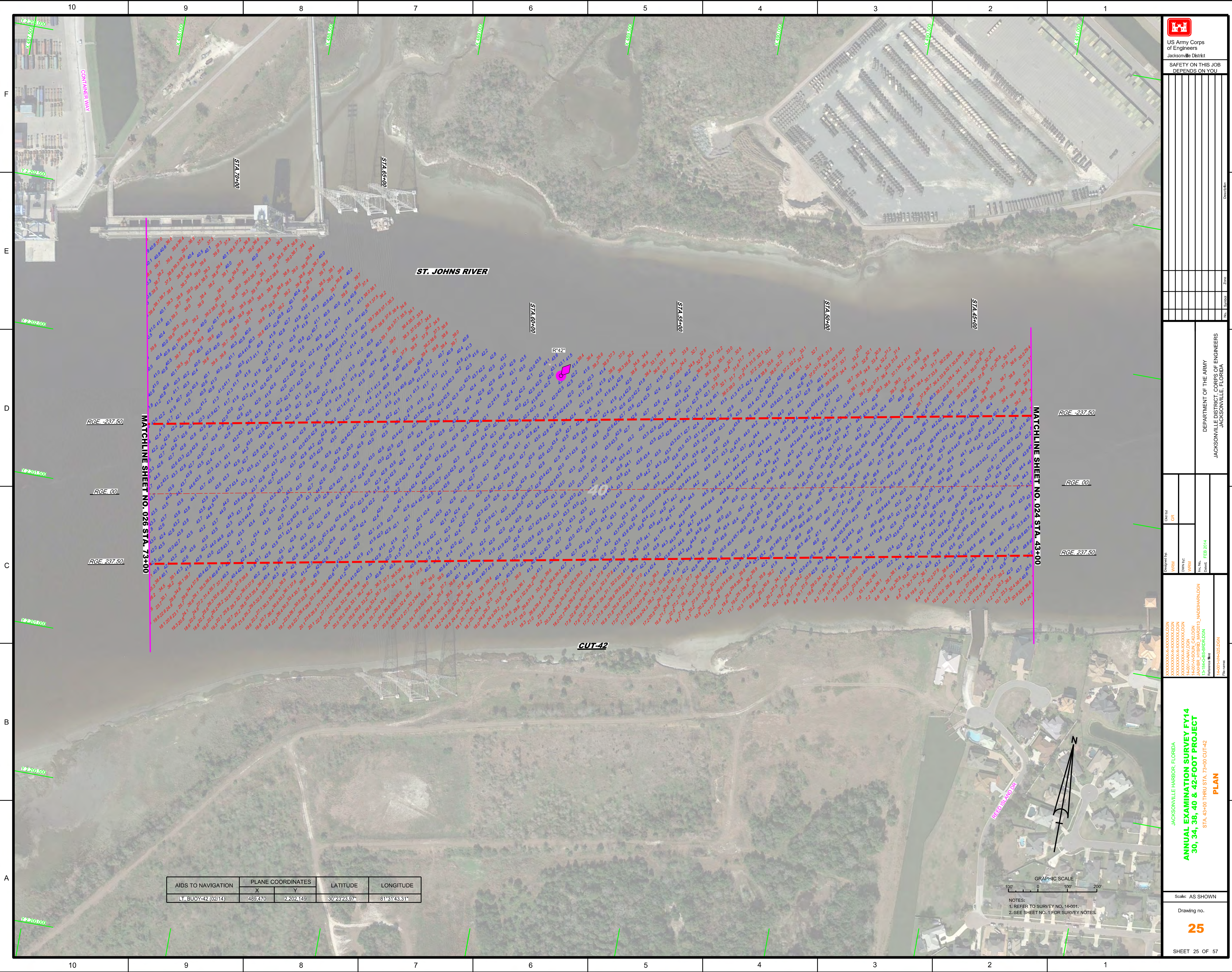
US Army Corps of Engineers
Jacksonville District
SAFETY ON THIS JOB
DEPENDS ON YOU


DEPARTMENT OF THE ARMY
JACKSONVILLE DISTRICT, CORPS OF ENGINEERS
JACKSONVILLE, FLORIDA

ANNUAL EXAMINATION SURVEY FY14
30, 34, 38, 40 & 42-FOOT PROJECT
PLAN
STA. 13+00 THRU STA. 43+00 CUT-42
SHEET 24 OF 57

GRAPHIC SCALE
0 100' 200'

NOTES:
1. REFER TO SURVEY NO. 14-001.
2. SEE SHEET NO. 1 FOR SURVEY NOTES.





 US Army Corps of Engineers
 Jacksonville District
 SAFETY ON THIS JOB
 DEPENDS ON YOU

DEPARTMENT OF THE ARMY
 JACKSONVILLE DISTRICT, CORPS OF ENGINEERS
 JACKSONVILLE, FLORIDA

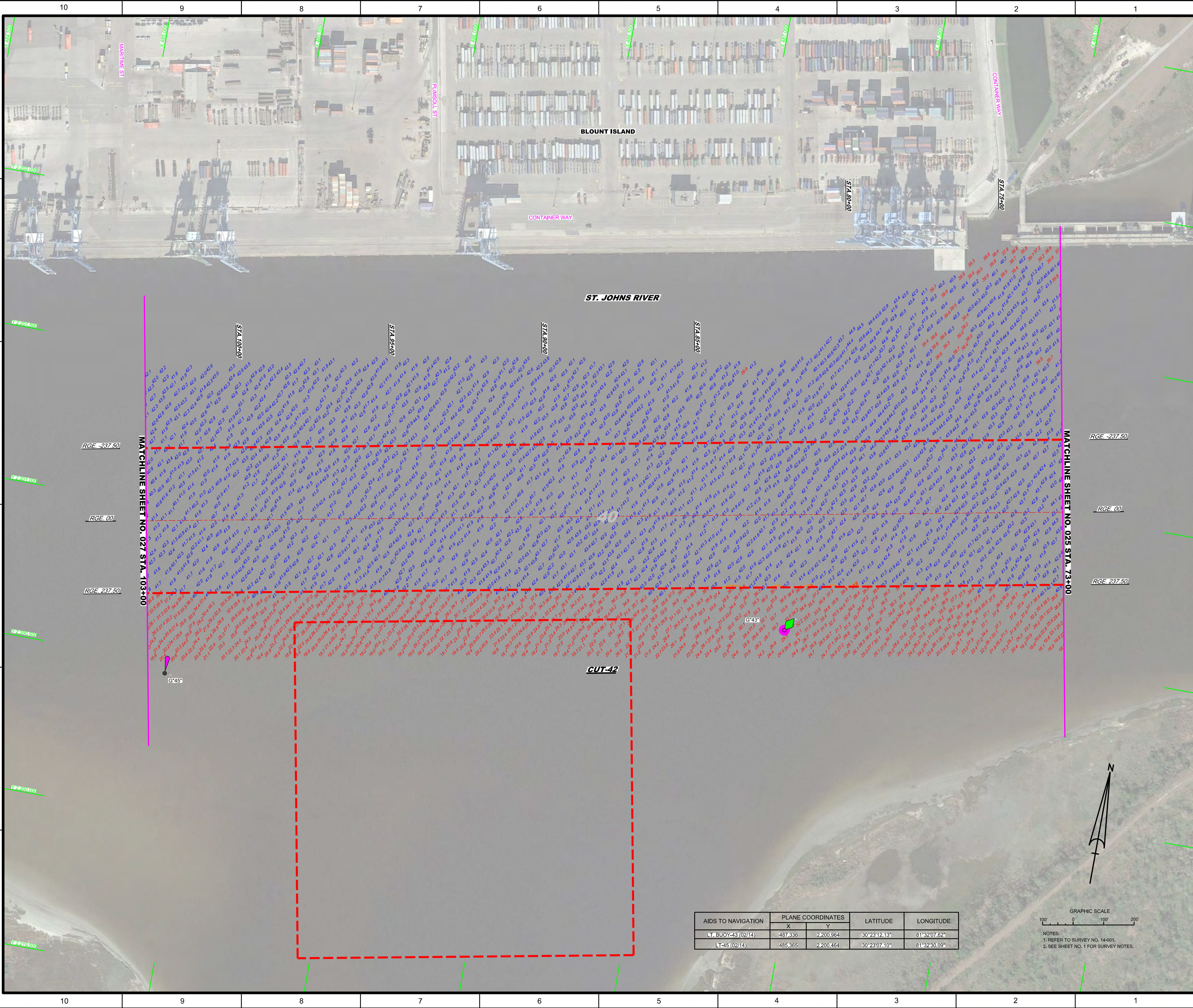
Designed by: WRM
 Checked by: GR
 Date: FEB 2014


JACKSONVILLE HARBOR, FLORIDA
ANNUAL EXAMINATION SURVEY FY14
30, 34, 38, 40 & 42-FOOT PROJECT
 STA. 43+00 THRU STA. 73+00 CUT-42
PLAN

Scale: AS SHOWN
 Drawing no. **25**
 SHEET 25 OF 57

AIDS TO NAVIGATION	PLANE COORDINATES		LATITUDE	LONGITUDE
	X	Y		
LT. BUOY 42 (0214)	489,470	2,202,149	30°23'23.97"	81°31'43.31"

GRAPHIC SCALE
 100' 0 100' 200'
 NOTES:
 1. REFER TO SURVEY NO. 14-001.
 2. SEE SHEET NO. 1 FOR SURVEY NOTES.





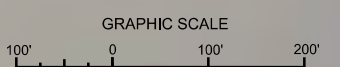
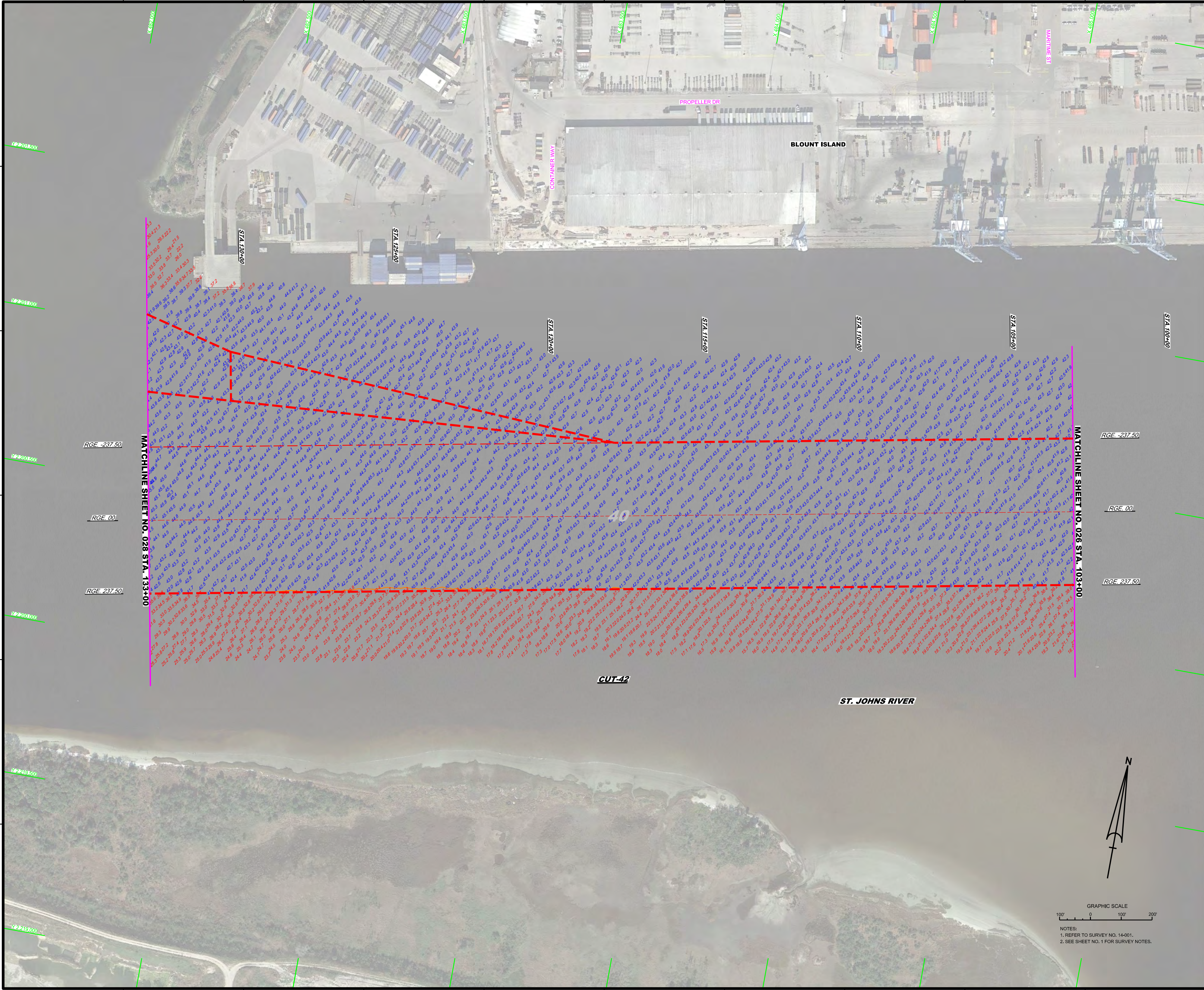
US Army Corps of Engineers
Jacksonville District
SAFETY ON THIS JOB
DEPENDS ON YOU

	DEPARTMENT OF THE ARMY JACKSONVILLE DISTRICT, CORPS OF ENGINEERS JACKSONVILLE, FLORIDA
	Drawn by: GR Checked by: GR Date: FEB 2014
	Designated by: WRM Drawn by: WRM Checked by: WRM Date: FEB 2014
	14-001-HAV-DGN 14-001-CON-DGN 14-001-NAV-DGN 14-001-STR-DGN 14-001-TRK-DGN 14-001-UTL-DGN 14-001-VEH-DGN 14-001-WAT-DGN 14-001-WEI-DGN 14-001-WLD-DGN 14-001-WTR-DGN 14-001-XXX-DGN
ANNUAL EXAMINATION SURVEY FY14 30, 34, 38, 40 & 42-FOOT PROJECT STA. 73+00 THRU STA. 103+00 CUT-42 PLAN	
Scale: AS SHOWN Drawing no. 26 SHEET 26 OF 57	

AIDS TO NAVIGATION	PLANE COORDINATES		LATITUDE	LONGITUDE
	X	Y		
LT BUOY-43 (02/14)	487,336	2,200,964	30°23'12.13"	81°32'07.62"
LT-45 (02/14)	485,365	2,200,464	30°23'07.10"	81°32'30.09"

GRAPHIC SCALE
1" = 200'

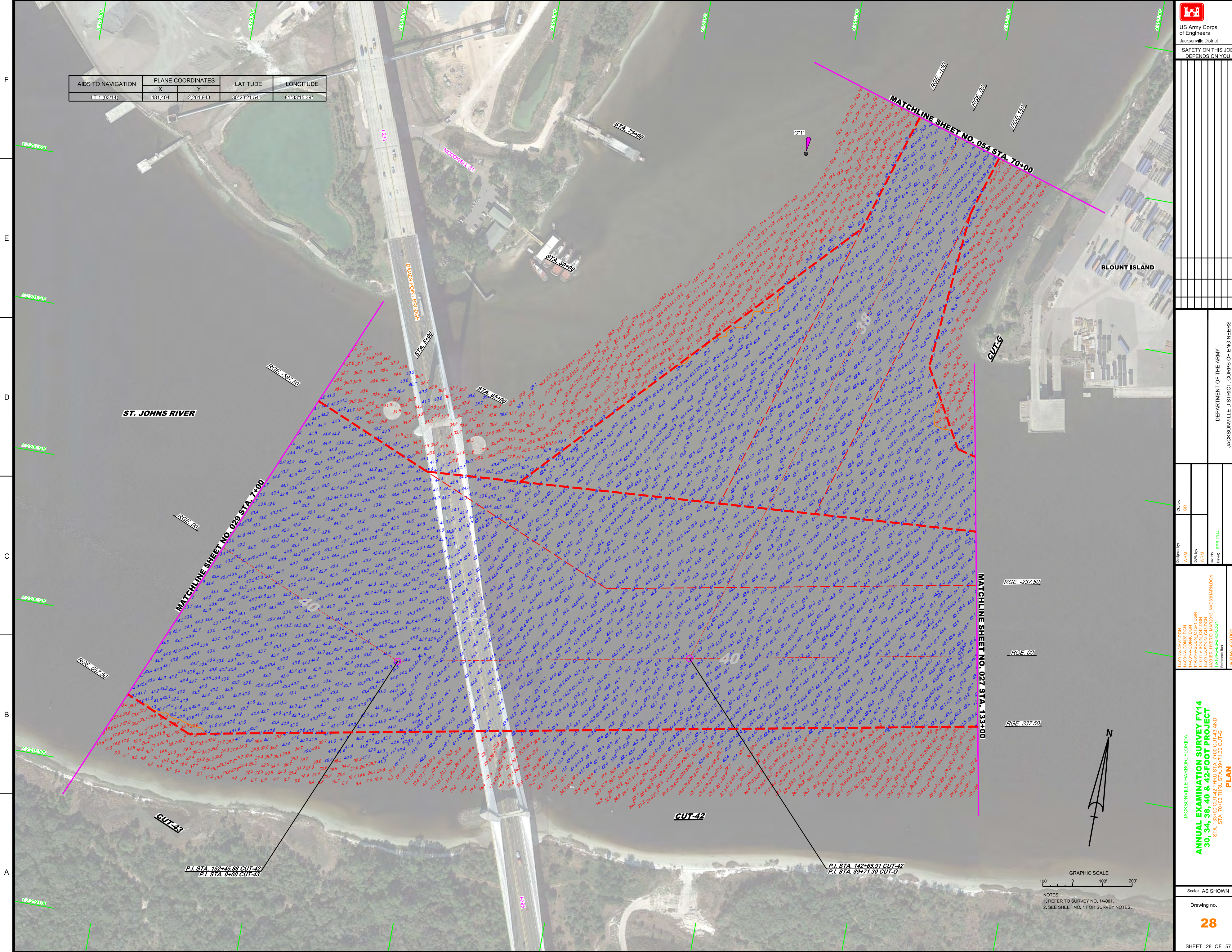
NOTES:
1. REFER TO SURVEY NO. 14-001.
2. SEE SHEET NO. 1 FOR SURVEY NOTES.



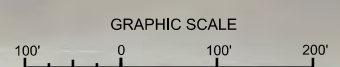
NOTES:
1. REFER TO SURVEY NO. 14-001.
2. SEE SHEET NO. 1 FOR SURVEY NOTES.



AIDS TO NAVIGATION	PLANE COORDINATES		LATITUDE	LONGITUDE
	X	Y		
LT-1 (03/14)	481.404	2,201.943	30°23'21.54"	81°33'15.39"



ST. JOHNS RIVER

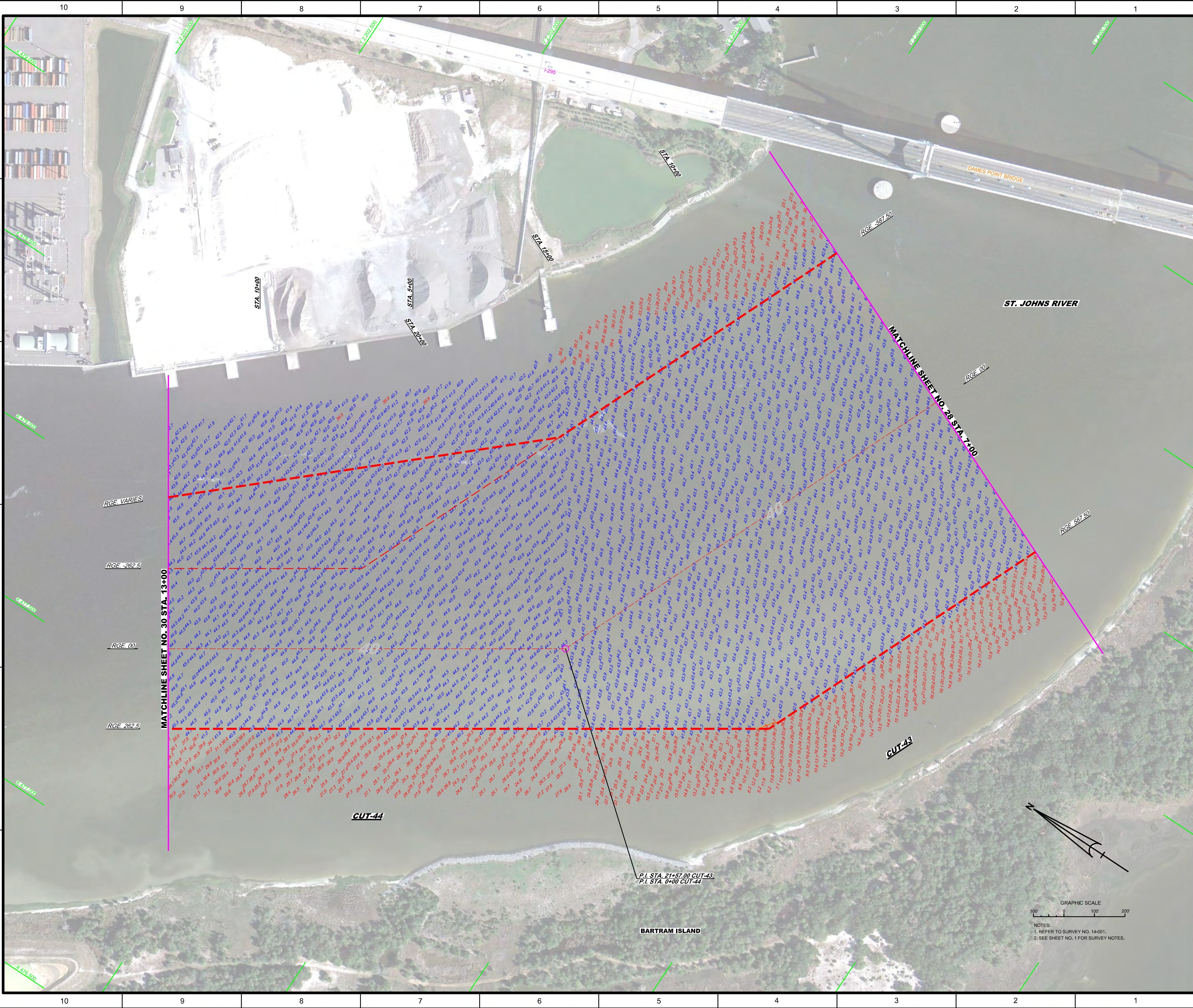


NOTES:
1. REFER TO SURVEY NO. 14-001.
2. SEE SHEET NO. 1 FOR SURVEY NOTES.

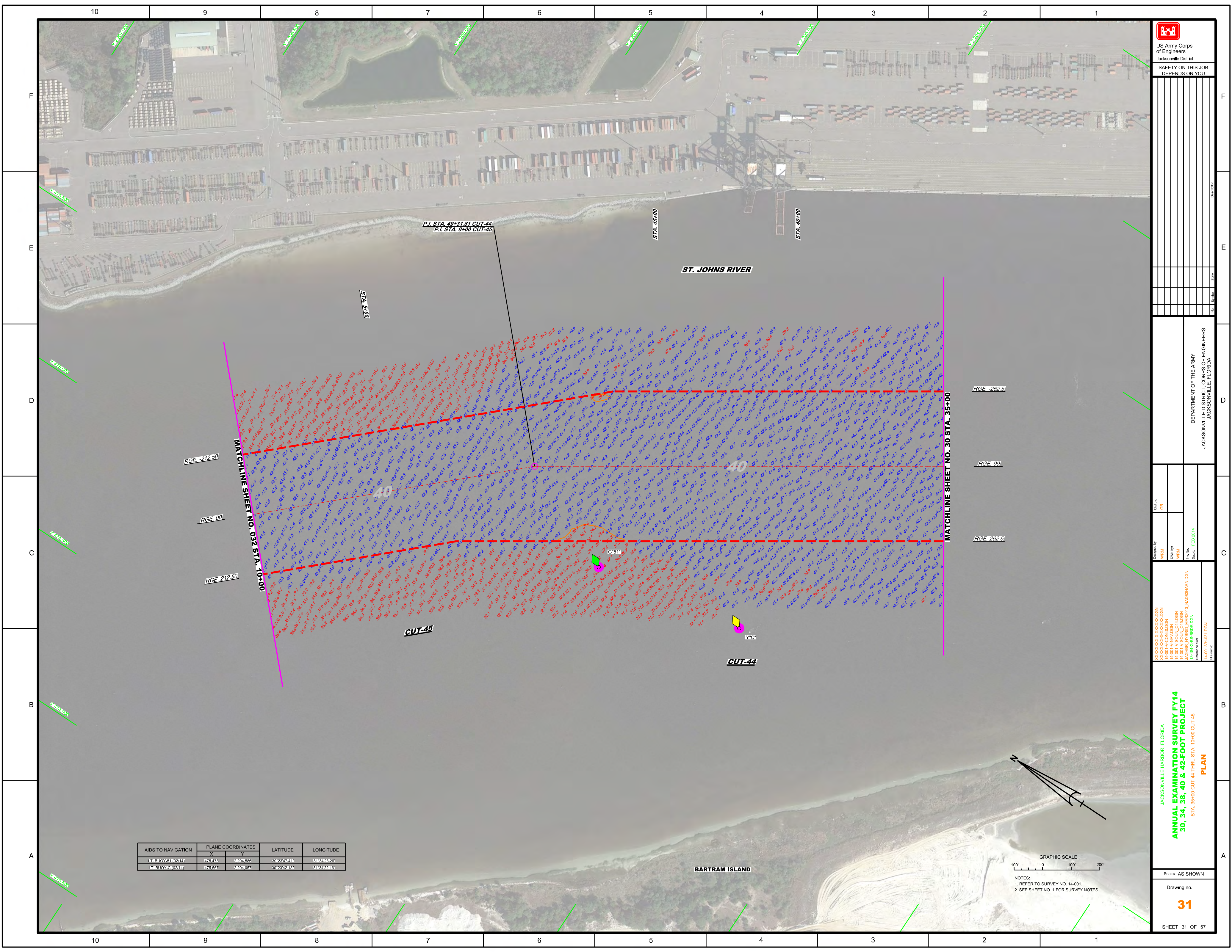
DEPARTMENT OF THE ARMY
JACKSONVILLE DISTRICT, CORPS OF ENGINEERS
JACKSONVILLE, FLORIDA

14-001-AVAV2.DGN
14-001-AVCON.DGN
14-001-AVSOON_CTR1.DGN
14-001-AVSOON_CTR2.DGN
14-001-AVSOON_CTR3.DGN
14-001-AVSOON_CTR4.DGN
14-001-AVSOON_CTR5.DGN
14-001-AVSOON_CTR6.DGN
14-001-AVSOON_CTR7.DGN
14-001-AVSOON_CTR8.DGN
14-001-AVSOON_CTR9.DGN
14-001-AVSOON_CTR10.DGN
14-001-AVSOON_CTR11.DGN
14-001-AVSOON_CTR12.DGN
14-001-AVSOON_CTR13.DGN
14-001-AVSOON_CTR14.DGN
14-001-AVSOON_CTR15.DGN
14-001-AVSOON_CTR16.DGN
14-001-AVSOON_CTR17.DGN
14-001-AVSOON_CTR18.DGN
14-001-AVSOON_CTR19.DGN
14-001-AVSOON_CTR20.DGN
14-001-AVSOON_CTR21.DGN
14-001-AVSOON_CTR22.DGN
14-001-AVSOON_CTR23.DGN
14-001-AVSOON_CTR24.DGN
14-001-AVSOON_CTR25.DGN
14-001-AVSOON_CTR26.DGN
14-001-AVSOON_CTR27.DGN
14-001-AVSOON_CTR28.DGN
14-001-AVSOON_CTR29.DGN
14-001-AVSOON_CTR30.DGN
14-001-AVSOON_CTR31.DGN
14-001-AVSOON_CTR32.DGN
14-001-AVSOON_CTR33.DGN
14-001-AVSOON_CTR34.DGN
14-001-AVSOON_CTR35.DGN
14-001-AVSOON_CTR36.DGN
14-001-AVSOON_CTR37.DGN
14-001-AVSOON_CTR38.DGN
14-001-AVSOON_CTR39.DGN
14-001-AVSOON_CTR40.DGN
14-001-AVSOON_CTR41.DGN
14-001-AVSOON_CTR42.DGN
14-001-AVSOON_CTR43.DGN
14-001-AVSOON_CTR44.DGN
14-001-AVSOON_CTR45.DGN
14-001-AVSOON_CTR46.DGN
14-001-AVSOON_CTR47.DGN
14-001-AVSOON_CTR48.DGN
14-001-AVSOON_CTR49.DGN
14-001-AVSOON_CTR50.DGN
14-001-AVSOON_CTR51.DGN
14-001-AVSOON_CTR52.DGN
14-001-AVSOON_CTR53.DGN
14-001-AVSOON_CTR54.DGN
14-001-AVSOON_CTR55.DGN
14-001-AVSOON_CTR56.DGN
14-001-AVSOON_CTR57.DGN
14-001-AVSOON_CTR58.DGN
14-001-AVSOON_CTR59.DGN
14-001-AVSOON_CTR60.DGN
14-001-AVSOON_CTR61.DGN
14-001-AVSOON_CTR62.DGN
14-001-AVSOON_CTR63.DGN
14-001-AVSOON_CTR64.DGN
14-001-AVSOON_CTR65.DGN
14-001-AVSOON_CTR66.DGN
14-001-AVSOON_CTR67.DGN
14-001-AVSOON_CTR68.DGN
14-001-AVSOON_CTR69.DGN
14-001-AVSOON_CTR70.DGN
14-001-AVSOON_CTR71.DGN
14-001-AVSOON_CTR72.DGN
14-001-AVSOON_CTR73.DGN
14-001-AVSOON_CTR74.DGN
14-001-AVSOON_CTR75.DGN
14-001-AVSOON_CTR76.DGN
14-001-AVSOON_CTR77.DGN
14-001-AVSOON_CTR78.DGN
14-001-AVSOON_CTR79.DGN
14-001-AVSOON_CTR80.DGN
14-001-AVSOON_CTR81.DGN
14-001-AVSOON_CTR82.DGN
14-001-AVSOON_CTR83.DGN
14-001-AVSOON_CTR84.DGN
14-001-AVSOON_CTR85.DGN
14-001-AVSOON_CTR86.DGN
14-001-AVSOON_CTR87.DGN
14-001-AVSOON_CTR88.DGN
14-001-AVSOON_CTR89.DGN
14-001-AVSOON_CTR90.DGN
14-001-AVSOON_CTR91.DGN
14-001-AVSOON_CTR92.DGN
14-001-AVSOON_CTR93.DGN
14-001-AVSOON_CTR94.DGN
14-001-AVSOON_CTR95.DGN
14-001-AVSOON_CTR96.DGN
14-001-AVSOON_CTR97.DGN
14-001-AVSOON_CTR98.DGN
14-001-AVSOON_CTR99.DGN
14-001-AVSOON_CTR100.DGN

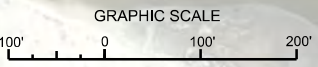
JACKSONVILLE HARBOR, FLORIDA
ANNUAL EXAMINATION SURVEY FY14
30, 34, 38, 40 & 42-FOOT PROJECT
STA. 133+00 CUT-42 THRU STA. 7+00 CUT-43 AND
STA. 70+00 THRU STA. 67+1.30 CUT-G
PLAN




<p>US Army Corps of Engineers Jacksonville District</p>	
<p>SAFETY ON THIS JOB DEPENDS ON YOU</p>	
<p>DESIGNED BY: WRM DRAWN BY: WRM CHECKED BY: WRM DATE: FEB 2014</p>	
<p>PROJECT: ANNUAL EXAMINATION SURVEY FY14 30, 34, 38, 40 & 42-FOOT PROJECT</p>	
<p>SCALE: AS SHOWN</p>	
<p>DRAWING NO. 29</p>	
<p>SHEET 29 OF 57</p>	
<p>DEPARTMENT OF THE ARMY JACKSONVILLE DISTRICT, CORPS OF ENGINEERS JACKSONVILLE, FLORIDA</p>	



AIDS TO NAVIGATION	PLANE COORDINATES		LATITUDE	LONGITUDE
	X	Y		
NF BUOY 511 (0241)	178478	2204556	30°23'47.43"	81°34'23.26"
NF BUOY 2 (0241)	175567	2204657	30°23'42.16"	81°34'22.16"



NOTES:
 1. REFER TO SURVEY NO. 14-001.
 2. SEE SHEET NO. 1 FOR SURVEY NOTES.



US Army Corps of Engineers
 Jacksonville District
 SAFETY ON THIS JOB
 DEPENDS ON YOU

DEPARTMENT OF THE ARMY
 JACKSONVILLE DISTRICT, CORPS OF ENGINEERS
 JACKSONVILLE, FLORIDA

Designed by: WRM
 Drawn by: WRM
 Checked: WRM
 Date: FEB 2014

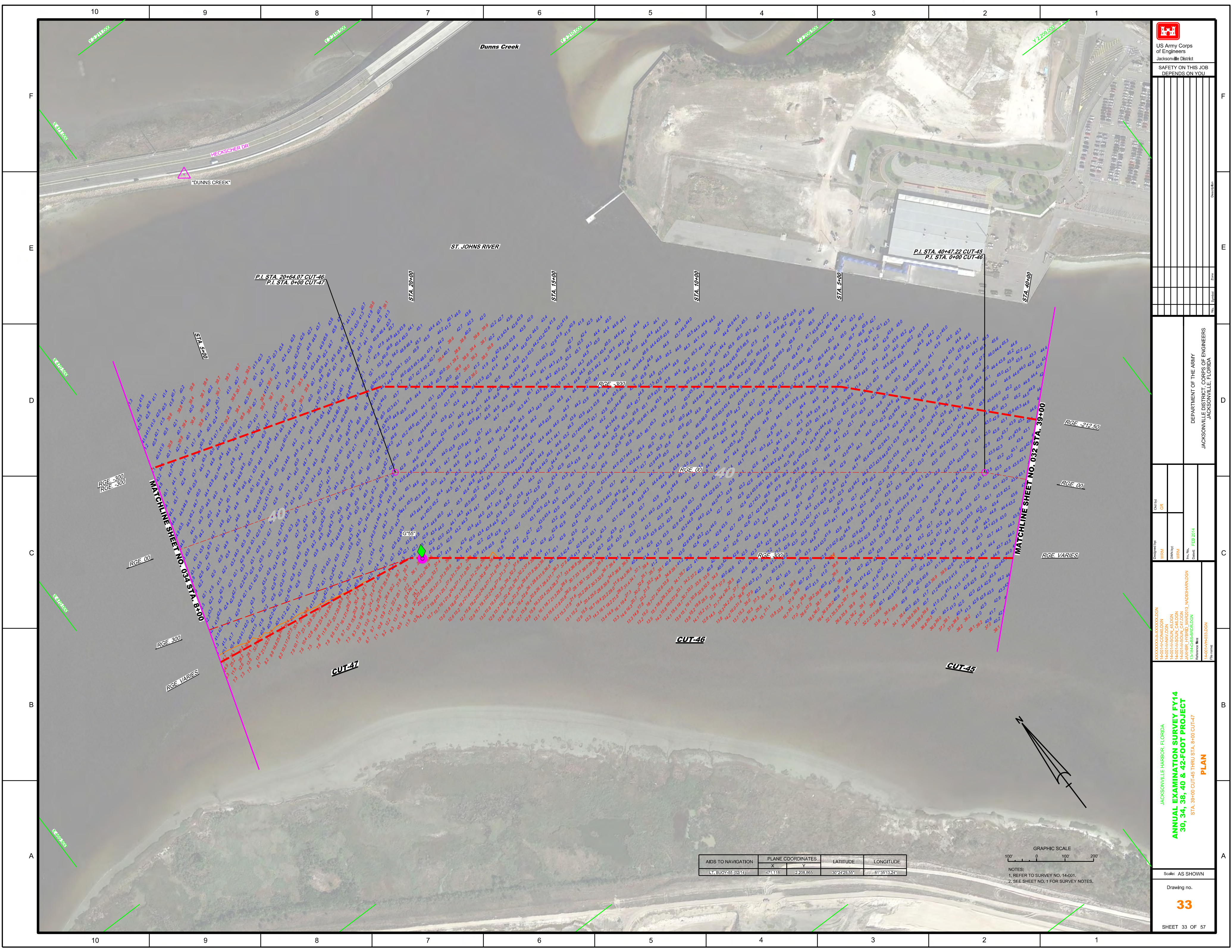
XXXXXXXXXXXXXXXXXXXX
 XXXXXXXXXXXXXXXXXXXX
 XXXXXXXXXXXXXXXXXXXX
 14-001-AV-SOIL_C44.DGN
 JAXRBR (PRB) (MAG) 013_NA038HARDGN
 13-1846-GB-BR16.DGN
 Reference File:
 14-001-AV-H31.DGN
 File Name:


JACKSONVILLE HARBOR, FLORIDA
ANNUAL EXAMINATION SURVEY FY14
30, 34, 38, 40 & 42-FOOT PROJECT
 STA. 35+00 CUT-44 THRU STA. 10+00 CUT-45
PLAN

Scale: AS SHOWN

Drawing no.
31

SHEET 31 OF 57




 US Army Corps of Engineers
 Jacksonville District
 SAFETY ON THIS JOB
 DEPENDS ON YOU

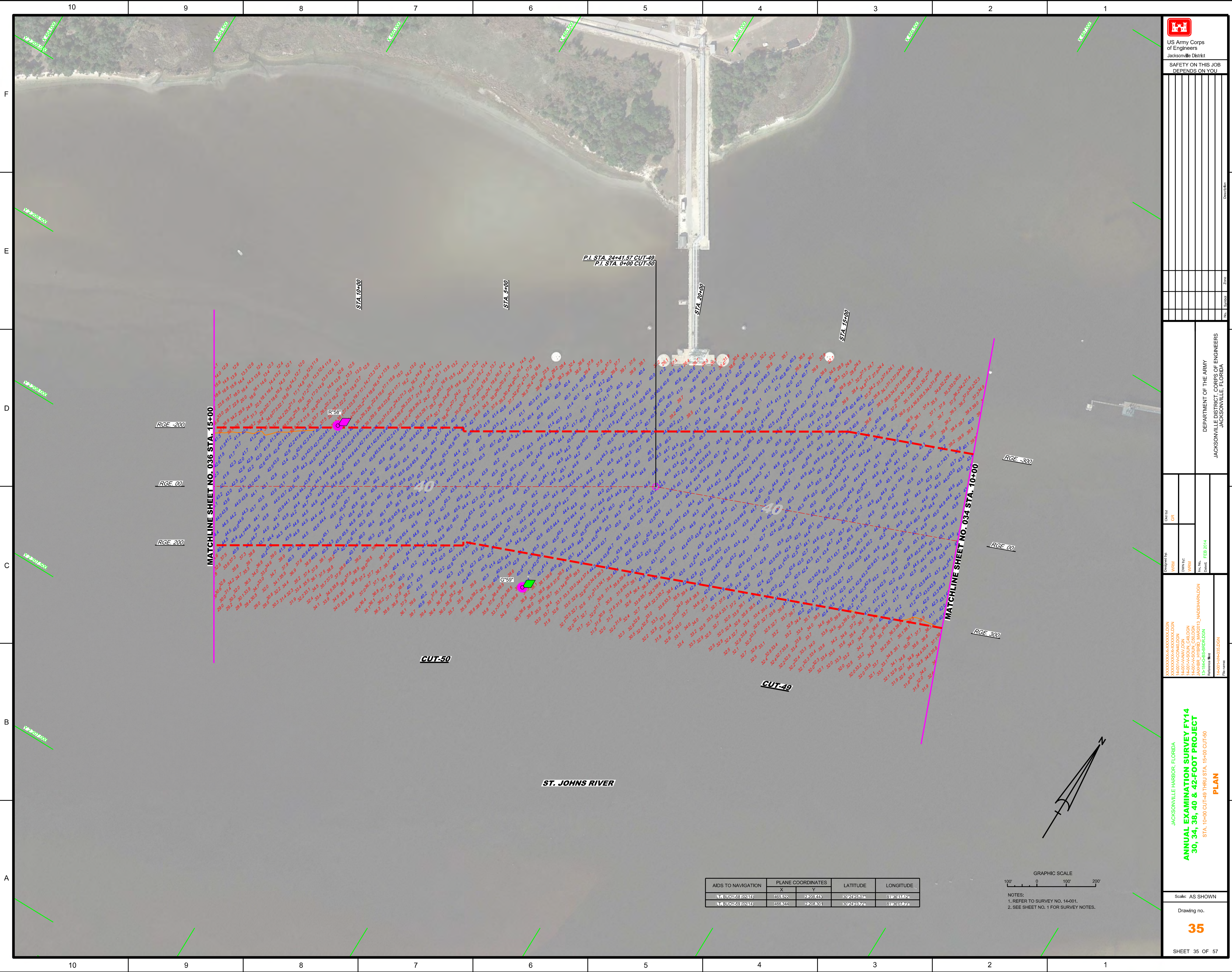
DEPARTMENT OF THE ARMY
 JACKSONVILLE DISTRICT, CORPS OF ENGINEERS
 JACKSONVILLE, FLORIDA

Designed by: WRM
 Drawn by: WRM
 Checked: WRM
 Date: FEB 2014

JACKSONVILLE HARBOR, FLORIDA
ANNUAL EXAMINATION SURVEY FY14
30, 34, 38, 40 & 42-FOOT PROJECT
 STA. 39+00 CUT-45 THRU STA. 8+00 CUT-47
PLAN
 Scale: AS SHOWN
 Drawing no. **33**
 SHEET 33 OF 57

AIDS TO NAVIGATION	PLANE COORDINATES		LATITUDE	LONGITUDE
	X	Y		
L1 BUOY-26 (0214)	471.118	2,208.865	30°24'28.55"	-81°35'13.24"

GRAPHIC SCALE
 1" = 100'
 0 100' 200'
 NOTES:
 1. REFER TO SURVEY NO. 14-001.
 2. SEE SHEET NO. 1 FOR SURVEY NOTES.



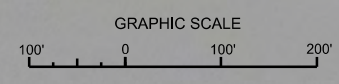
P.I. STA. 24+41.57 CUT-49
P.I. STA. 0+00 CUT-50

MATCHLINE SHEET NO. 036 STA. 15+00


MATCHLINE SHEET NO. 034 STA. 10+00

ST. JOHNS RIVER

AIDS TO NAVIGATION	PLANE COORDINATES		LATITUDE	LONGITUDE
	X	Y		
K185900	465.522	2203.443	30°29'25.97w	81°09'51.74E
K185900	469.834	2203.801	30°29'26.74w	81°09'50.76E



NOTES:
1. REFER TO SURVEY NO. 14-001.
2. SEE SHEET NO. 1 FOR SURVEY NOTES.



US Army Corps of Engineers
Jacksonville District
SAFETY ON THIS JOB
DEPENDS ON YOU

<p>DESIGNED BY: WRM CHECKED BY: GRL DATE: FEB 2014</p>	<p>DEPARTMENT OF THE ARMY JACKSONVILLE DISTRICT, CORPS OF ENGINEERS JACKSONVILLE, FLORIDA</p>
<p>JACKSONVILLE HARBOR, FLORIDA ANNUAL EXAMINATION SURVEY FY14 30, 34, 38, 40 & 42-FOOT PROJECT STA. 10+00 CUT-49 THRU STA. 15+00 CUT-50 PLAN</p>	
<p>Scale: AS SHOWN Drawing no. 35 SHEET 35 OF 57</p>	