

US Army Corps of Engineers
Jacksonville District

SAFETY ON THIS JOB
DEPENDS ON YOU

DEPARTMENT OF THE ARMY
JACKSONVILLE DISTRICT, CORPS OF ENGINEERS
JACKSONVILLE, FLORIDA

Checked By:	GR
Designed By:	WRM
Drawn By:	WRM
Field Date:	FEB 2014
Reference Map:	13-1846-GS-BR10-DGN
File Name:	14-001-14-01-DGN

JACKSONVILLE HARBOR, FLORIDA

ANNUAL EXAMINATION SURVEY FY14
30, 34, 38, 40 & 42-FOOT PROJECT

STA. 298+00 BAR CUT-3 THRU STA. 12+00 CUT-5

PLAN

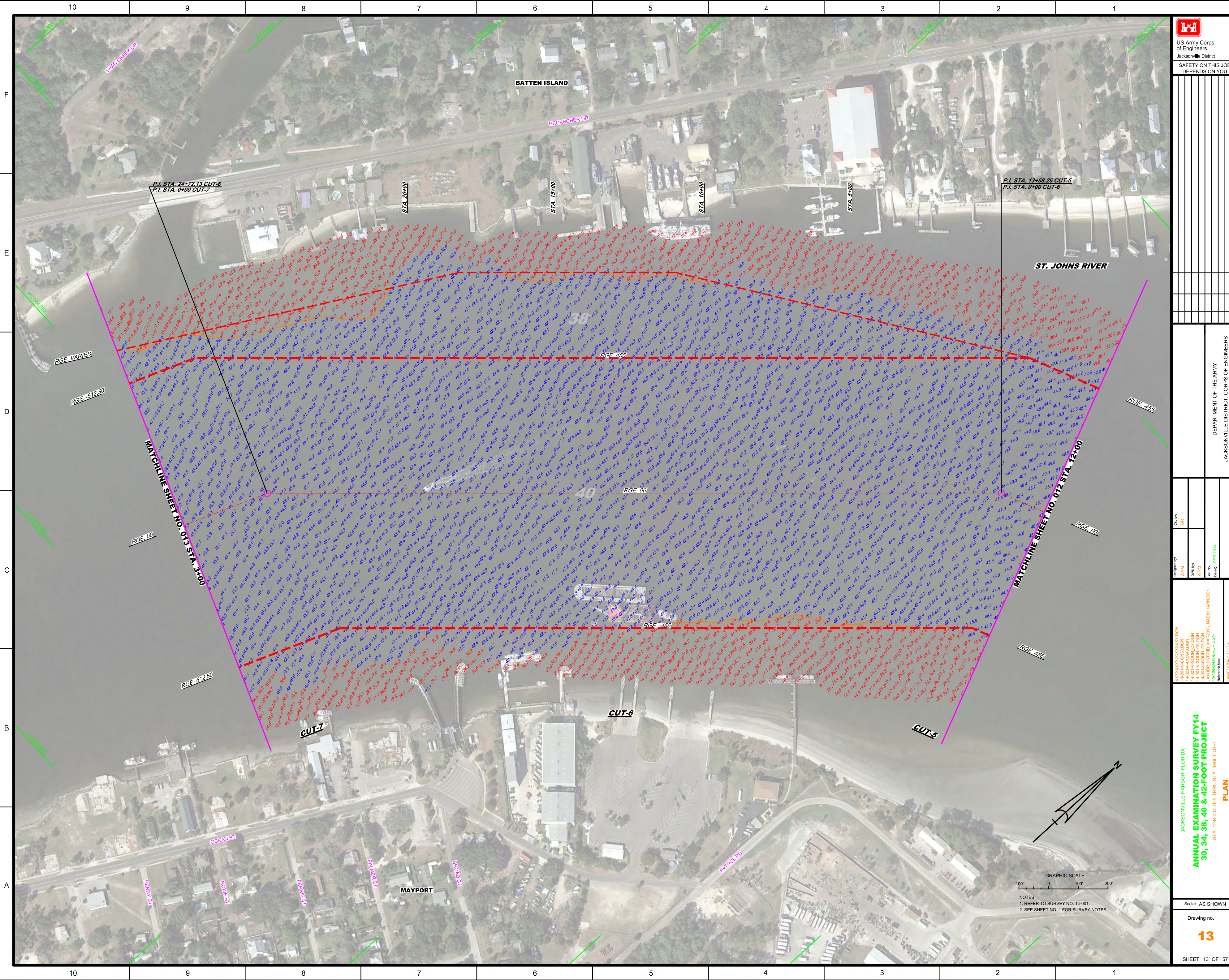
Scale: AS SHOWN


Drawing no. **12**

SHEET 12 OF 57

GRAPHIC SCALE
0 100' 200'

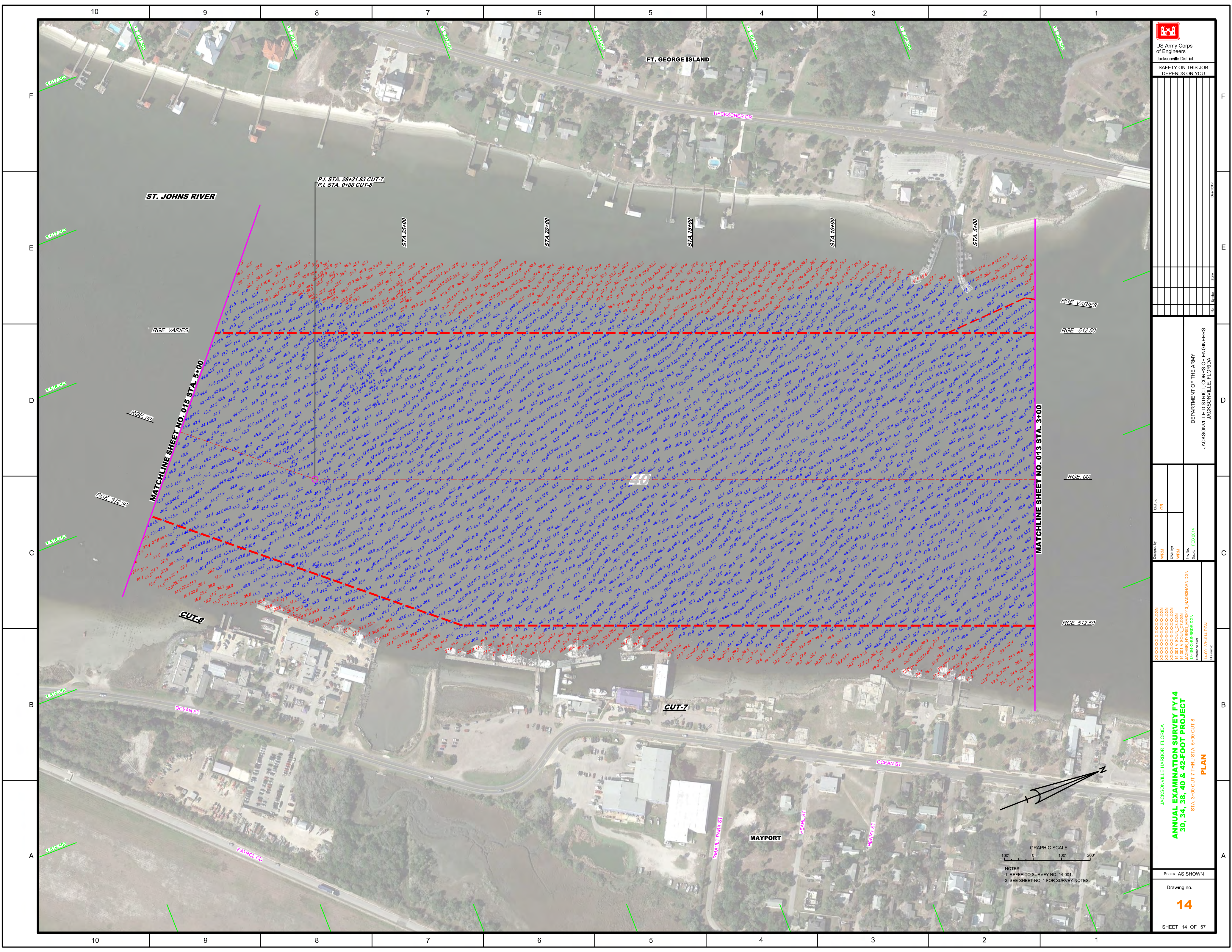
NOTES:
1. REFER TO SURVEY NO. 14-001.
2. SEE SHEET NO. 1 FOR SURVEY NOTES.




 US Army Corps
 of Engineers
 Jacksonville District
 SAFETY ON THIS JOB
 DEPENDS ON YOU

JACKSONVILLE HARBOR, FLORIDA ANNUAL EXAMINATION SURVEY FY14 30, 34, 38, 40 & 42-FOOT PROJECT STA. 12+00 CUT-5 THRU STA. 3+00 CUT-7 PLAN	DEPARTMENT OF THE ARMY JACKSONVILLE DISTRICT, CORPS OF ENGINEERS JACKSONVILLE, FLORIDA
Designed by: WRM Checked by: GRL Drawn by: WRM Date: FEB 2014	Scale: AS SHOWN Drawing no.: 13 SHEET 13 OF 57

1. REFER TO SURVEY NO. 14-001.
 2. SEE SHEET NO. 1 FOR SURVEY NOTES.



US Army Corps of Engineers
 Jacksonville District
 SAFETY ON THIS JOB
 DEPENDS ON YOU

DEPARTMENT OF THE ARMY
 JACKSONVILLE DISTRICT, CORPS OF ENGINEERS
 JACKSONVILLE, FLORIDA

Designed by: **WRM**
 Drawn by: **WRM**
 Checked by: **WRM**
 Date: **FEB 2014**

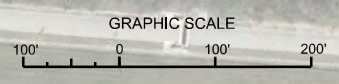
JACKSONVILLE HARBOR, FLORIDA
ANNUAL EXAMINATION SURVEY FY14
30, 34, 38, 40 & 42-FOOT PROJECT
 STA. 3+00 CUT-7 THRU STA. 5+00 CUT-8
PLAN

Scale: AS SHOWN
 Drawing no. **14**
 SHEET 14 OF 57

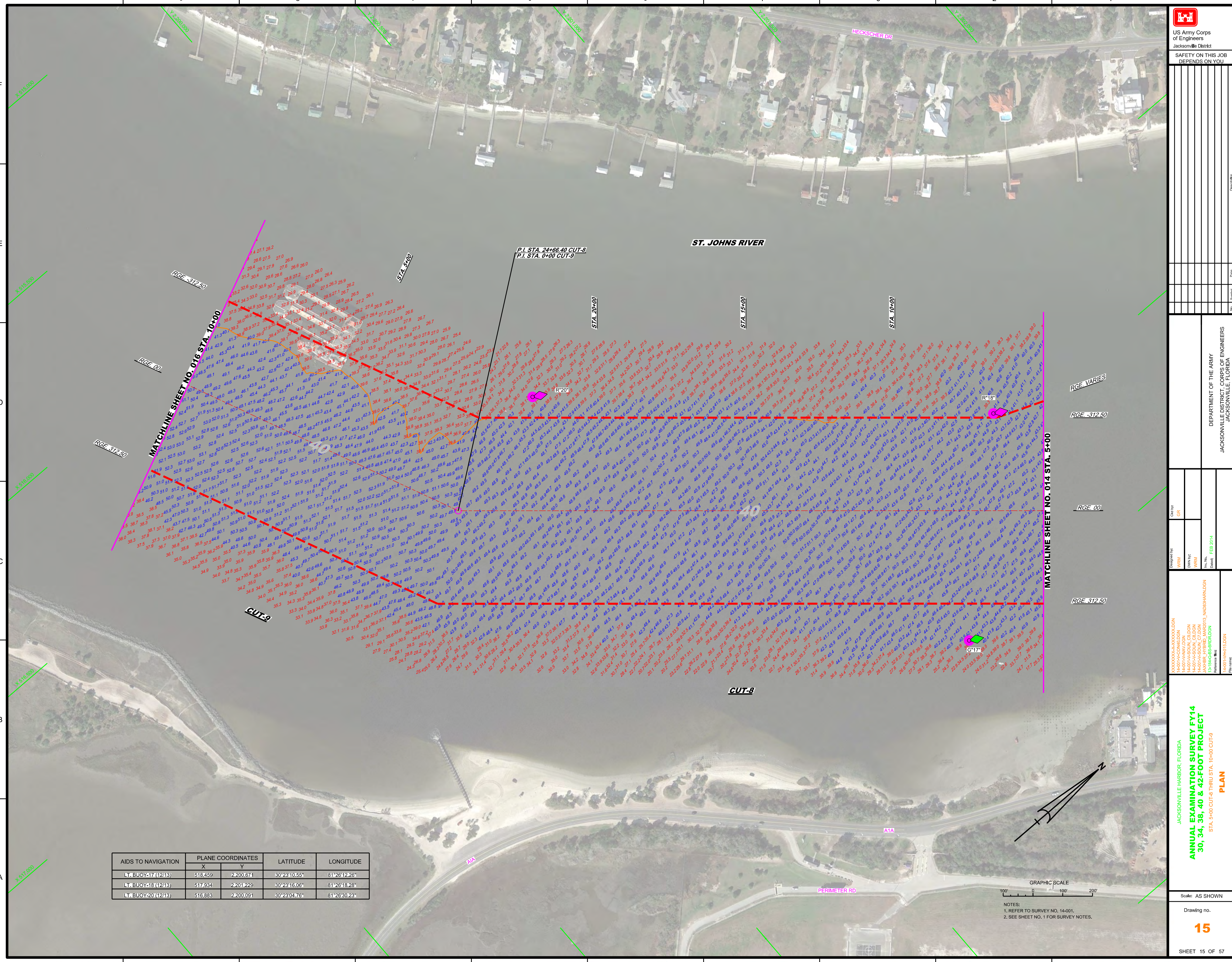
GRAPHIC SCALE
 100' 0' 100' 200'

NOTES:
 1. REFER TO SURVEY NO. 14-001.
 2. SEE SHEET NO. 1 FOR SURVEY NOTES.

AIDS TO NAVIGATION	PLANE COORDINATES		LATITUDE	LONGITUDE
	X	Y		
LT. BUOY-17(1213)	518.459	2200.671	30°23'10.55"	81°26'12.26"
LT. BUOY-18(1213)	517.934	2201.229	30°23'16.06"	81°26'18.26"
LT. BUOY-20(1213)	516.883	2200.091	30°23'04.76"	81°26'30.23"



NOTES:
1. REFER TO SURVEY NO. 14-1001.
2. SEE SHEET NO. 1 FOR SURVEY NOTES.



ST. JOHNS RIVER

P.I. STA. 24+66.40 CUT-8
P.I. STA. 0+00 CUT-9

STA. 20+00
STA. 15+00
STA. 10+00

RGE. 312.50
RGE. 00
RGE. VARIES

CUT-8
CUT-9

ATA
PERIMETER RD
HECKSCHER DR

Y=2200.000
Y=2200.500
Y=2201.000
Y=2201.500
Y=2202.000

X=516.000
X=517.000
X=518.000
X=519.000
X=520.000

Matchline Sheet No. 016 STA. 10+00
Matchline Sheet No. 014 STA. 5+00

DESIGNED BY: WRM, WRM, WRM, WRM
CHECKED BY: GRL
DATE: FEB 2014

AIDS TO NAVIGATION	PLANE COORDINATES		LATITUDE	LONGITUDE
	X	Y		
LT. BUOY 22 (1213)	514.603	2,199.032	30°22'54.20"	81°26'53.93"

US Army Corps
of Engineers
Jacksonville District

SAFETY ON THIS JOB
DEPENDS ON YOU

DATE
SCALE

NO.
BY

REV.
CHK.

DATE
SCALE

DESIGNED BY: WRM
CHECKED BY: GRL

DATE: FEB 2014

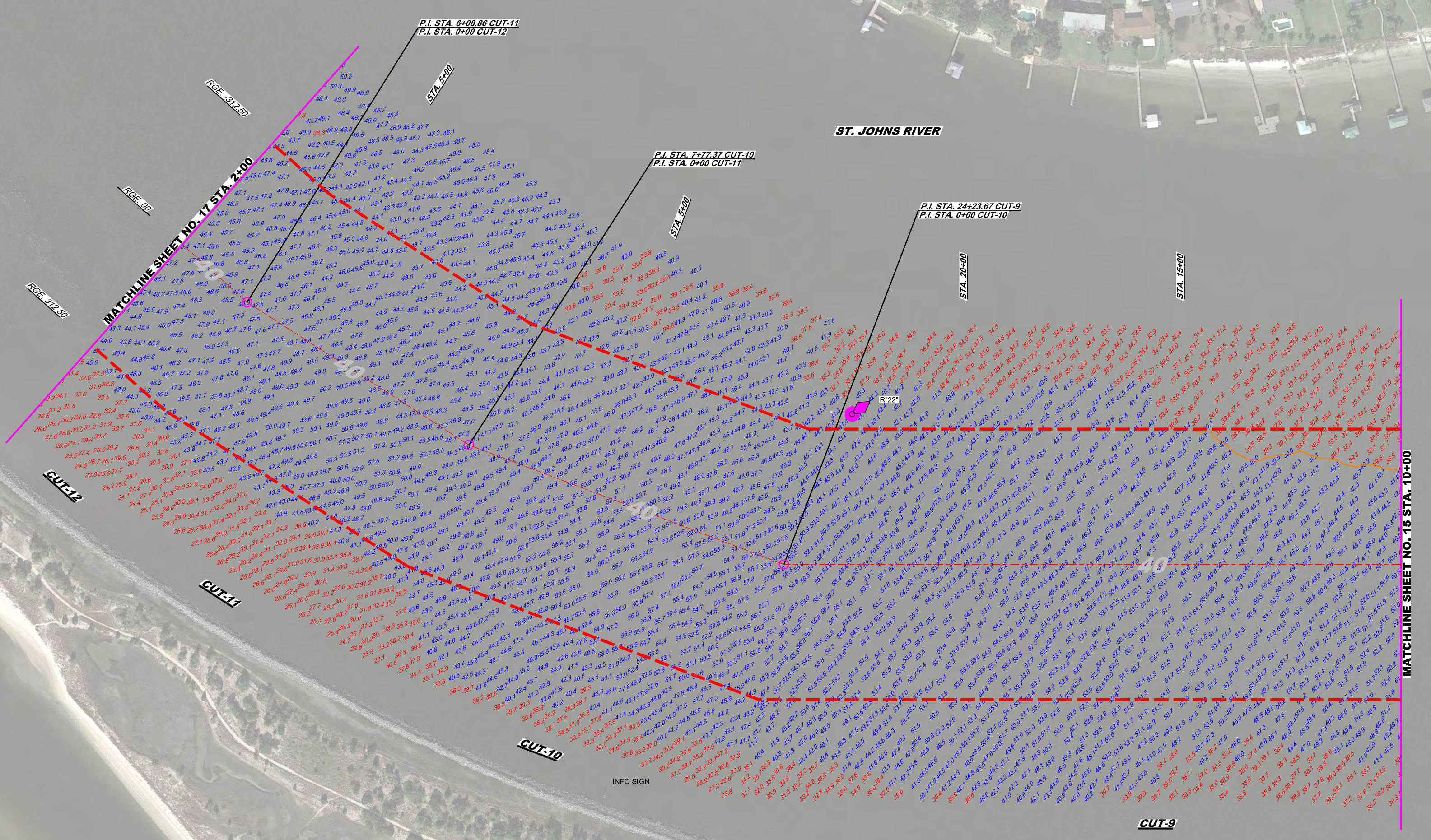
DEPARTMENT OF THE ARMY
JACKSONVILLE DISTRICT, CORPS OF ENGINEERS
JACKSONVILLE, FLORIDA

PROJECT: ANNUAL EXAMINATION SURVEY FY14
STA. 10+00 CUT-9 THRU STA. 2+00 CUT-12

PLAN

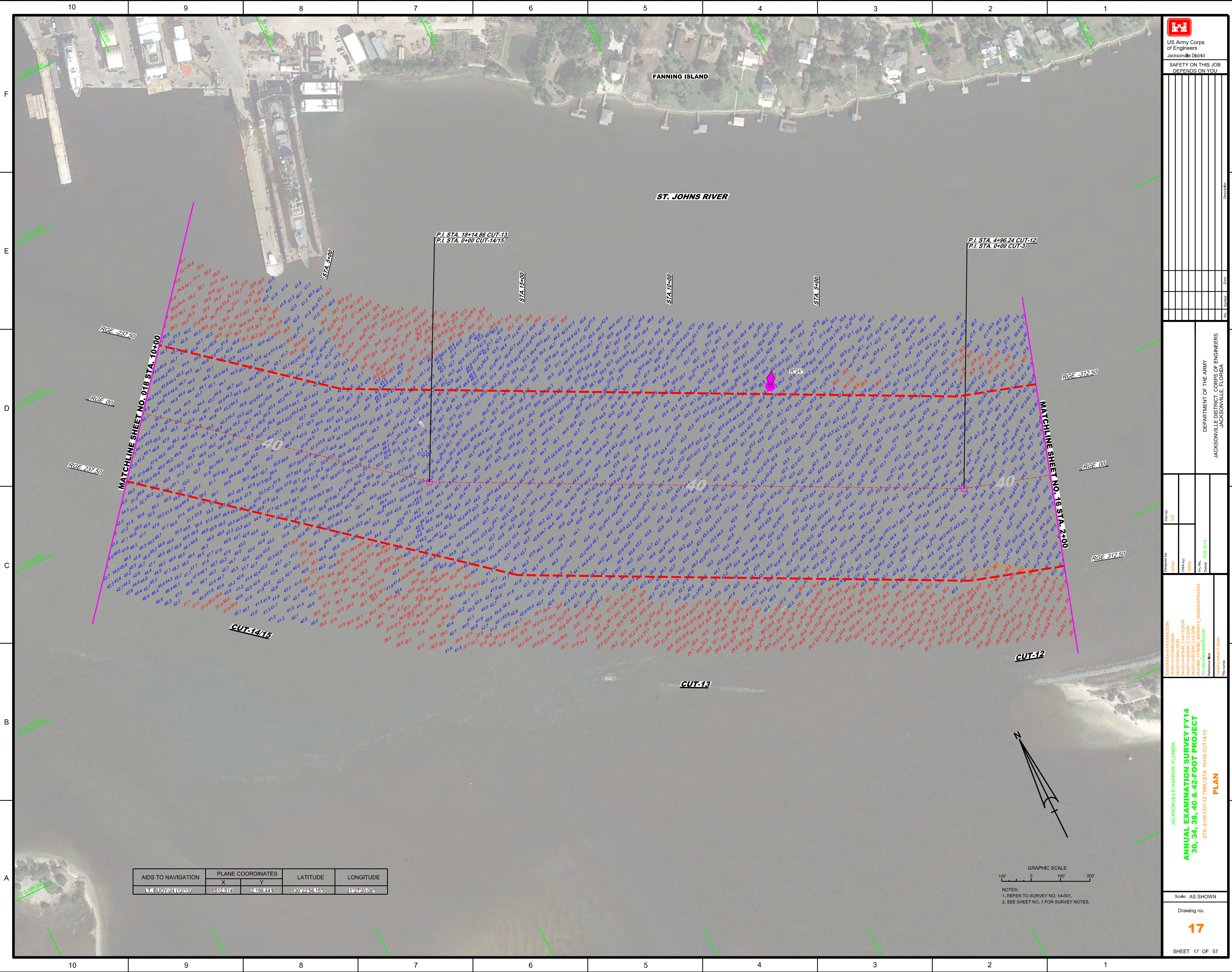
PROJECT NO. 16

SHEET 16 OF 57

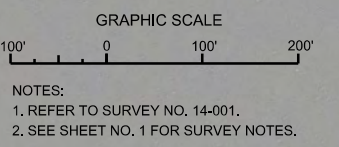



GRAPHIC SCALE
100' 0 100 200

NOTES:
1. REFER TO SURVEY NO. 14-001.
2. SEE SHEET NO. 1 FOR SURVEY NOTES.



AIDS TO NAVIGATION	PLANE COORDINATES		LATITUDE	LONGITUDE
	X	Y		
LT BUOY 24 (12/13)	512,514	2,199,441	30°22'58.15"	81°27'20.05"





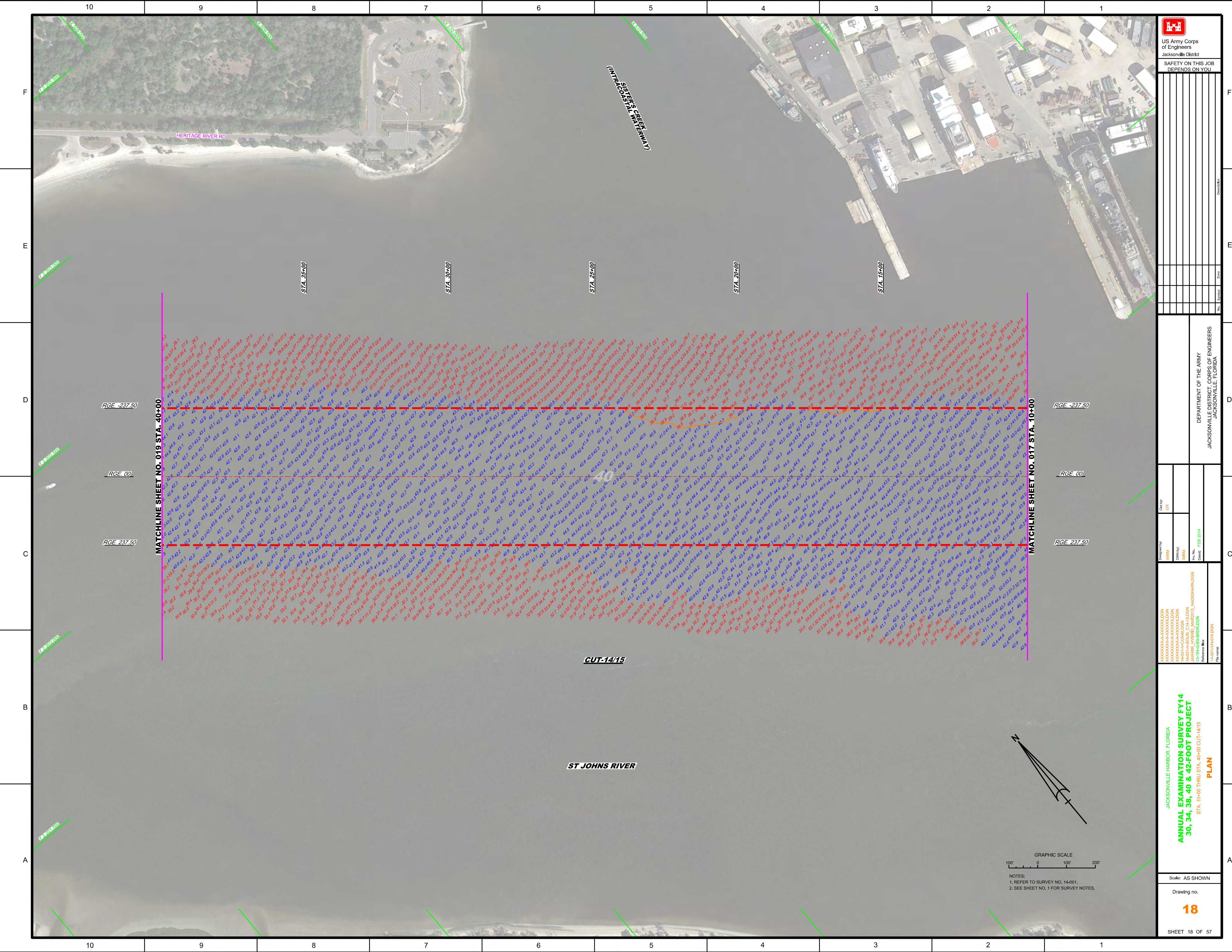
US Army Corps of Engineers
Jacksonville District
SAFETY ON THIS JOB
DEPENDS ON YOU

DEPARTMENT OF THE ARMY
JACKSONVILLE DISTRICT, CORPS OF ENGINEERS
JACKSONVILLE, FLORIDA

Drawn by: GRL
Checked by: GRL
Designed by: WRM
DWG No: 14-001-0001
Title: ANNUAL EXAMINATION SURVEY FY14
Project: STA. 2+00 CUT-12 THRU STA. 10+00 CUT 14/15
Date: FEB 2014

JACKSONVILLE HARBOR, FLORIDA
ANNUAL EXAMINATION SURVEY FY14
30, 34, 38, 40 & 42-FOOT PROJECT
STA. 2+00 CUT-12 THRU STA. 10+00 CUT 14/15
PLAN

Scale: AS SHOWN
Drawing No. **17**
SHEET 17 OF 57



F
E
D
C
B
A

US Army Corps of Engineers Jacksonville District SAFETY ON THIS JOB DEPENDS ON YOU										
<table border="1" style="width: 100%; border-collapse: collapse;"> <tr> <td style="width: 50%; text-align: center;"> MATCHLINE SHEET NO. 019 STA. 40+00 </td> <td style="width: 50%; text-align: center;"> MATCHLINE SHEET NO. 017 STA. 10+00 </td> </tr> </table>	MATCHLINE SHEET NO. 019 STA. 40+00	MATCHLINE SHEET NO. 017 STA. 10+00	<table border="1" style="width: 100%; border-collapse: collapse;"> <tr> <td style="width: 50%; text-align: center;"> RGE. -237.50 </td> <td style="width: 50%; text-align: center;"> RGE. -237.50 </td> </tr> <tr> <td style="width: 50%; text-align: center;"> RGE. 00 </td> <td style="width: 50%; text-align: center;"> RGE. 00 </td> </tr> <tr> <td style="width: 50%; text-align: center;"> RGE. 237.50 </td> <td style="width: 50%; text-align: center;"> RGE. 237.50 </td> </tr> </table>		RGE. -237.50	RGE. -237.50	RGE. 00	RGE. 00	RGE. 237.50	RGE. 237.50
MATCHLINE SHEET NO. 019 STA. 40+00	MATCHLINE SHEET NO. 017 STA. 10+00									
RGE. -237.50	RGE. -237.50									
RGE. 00	RGE. 00									
RGE. 237.50	RGE. 237.50									
CUT-14/15										
ST JOHNS RIVER										
NOTES: 1. REFER TO SURVEY NO. 14-001. 2. SEE SHEET NO. 1 FOR SURVEY NOTES.										
JACKSONVILLE HARBOR, FLORIDA ANNUAL EXAMINATION SURVEY FY14 30, 34, 38, 40 & 42-FOOT PROJECT STA. 10+00 THRU STA. 40+00 CUT-14/15 PLAN										
<table border="1" style="width: 100%; border-collapse: collapse;"> <tr> <td style="width: 50%;"> Designed by: GR Drawn by: GR Checked by: GR Date: FEB 2014 </td> <td colspan="2" style="text-align: center;"> DEPARTMENT OF THE ARMY JACKSONVILLE DISTRICT, CORPS OF ENGINEERS JACKSONVILLE, FLORIDA </td> </tr> </table>			Designed by: GR Drawn by: GR Checked by: GR Date: FEB 2014	DEPARTMENT OF THE ARMY JACKSONVILLE DISTRICT, CORPS OF ENGINEERS JACKSONVILLE, FLORIDA						
Designed by: GR Drawn by: GR Checked by: GR Date: FEB 2014	DEPARTMENT OF THE ARMY JACKSONVILLE DISTRICT, CORPS OF ENGINEERS JACKSONVILLE, FLORIDA									
<table border="1" style="width: 100%; border-collapse: collapse;"> <tr> <td style="width: 50%; text-align: center;"> SHEET 18 OF 57 </td> <td colspan="2" style="text-align: center;"> Drawing no. 18 </td> </tr> </table>			SHEET 18 OF 57	Drawing no. 18						
SHEET 18 OF 57	Drawing no. 18									



US Army Corps
of Engineers
Jacksonville District

SAFETY ON THIS JOB
DEPENDS ON YOU

DEPARTMENT OF THE ARMY
JACKSONVILLE DISTRICT, CORPS OF ENGINEERS
JACKSONVILLE, FLORIDA

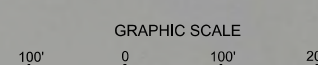
Checked By:	GR
Designed By:	WRM
Drawn By:	WRM
Checked By:	WRM
Date:	FEB 2014

XXXXXXXXXXXXXXXXXXXX
XXXXXXXXXXXXXXXXXXXX
14401VA-SOUL_C16.DGN
14401VA-SOUL_C16.DGN
JAN98R IPREB MAR2013 NA083HARDSON
131846-65-SR16.DGN
Reference files:
14401VA-HR1.DGN

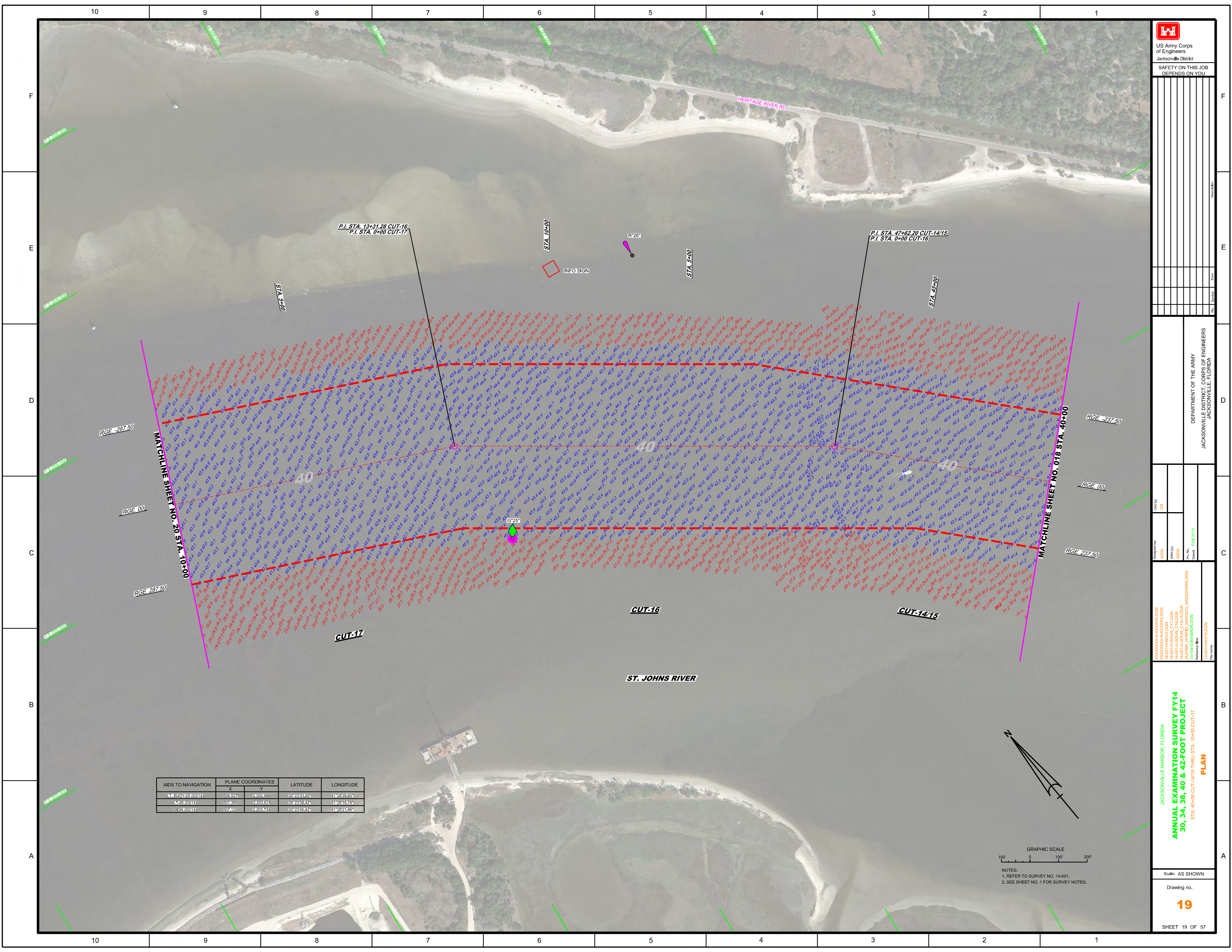
JACKSONVILLE HARBOR, FLORIDA
**ANNUAL EXAMINATION SURVEY FY14
30, 34, 38, 40 & 42-FOOT PROJECT**
STA. 40+00 CUT-14/15 THRU STA. 10+00 CUT-17
PLAN

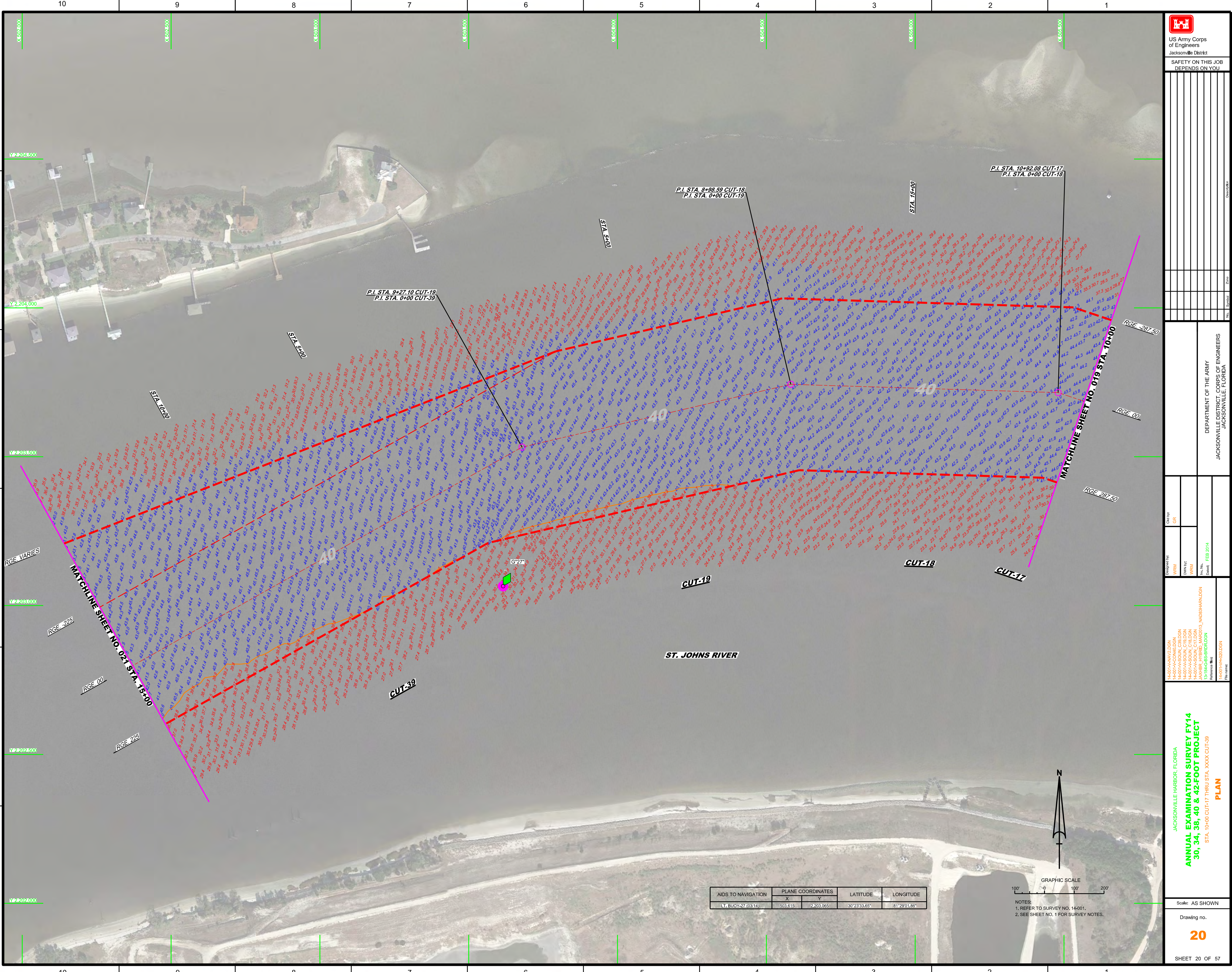
Scale: AS SHOWN
Drawing no.

AIDS TO NAVIGATION	PLANE COORDINATES		LATITUDE	LONGITUDE
	X	Y		
14401VA-SOUL_C16.DGN	508592	2407455	31°22'23.970N	81°28'23.950W
14401VA-SOUL_C16.DGN	508550	2408331	31°22'23.922N	81°28'16.738W
14401VA-SOUL_C16.DGN	508520	2408384	31°22'24.022N	81°28'16.968W



NOTES:
1. REFER TO SURVEY NO. 14-001.
2. SEE SHEET NO. 1 FOR SURVEY NOTES.





DEPARTMENT OF THE ARMY
JACKSONVILLE DISTRICT, CORPS OF ENGINEERS
JACKSONVILLE, FLORIDA

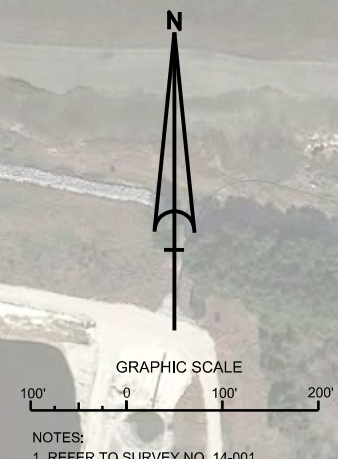
Check by: GRL
Designed by: WRM
Drawn by: WRM
Reviewed by: JAWHR, YFRBD, WACD03, NAO38WANDON
Reference file: 14001M420LGN
File name: 14001M420LGN

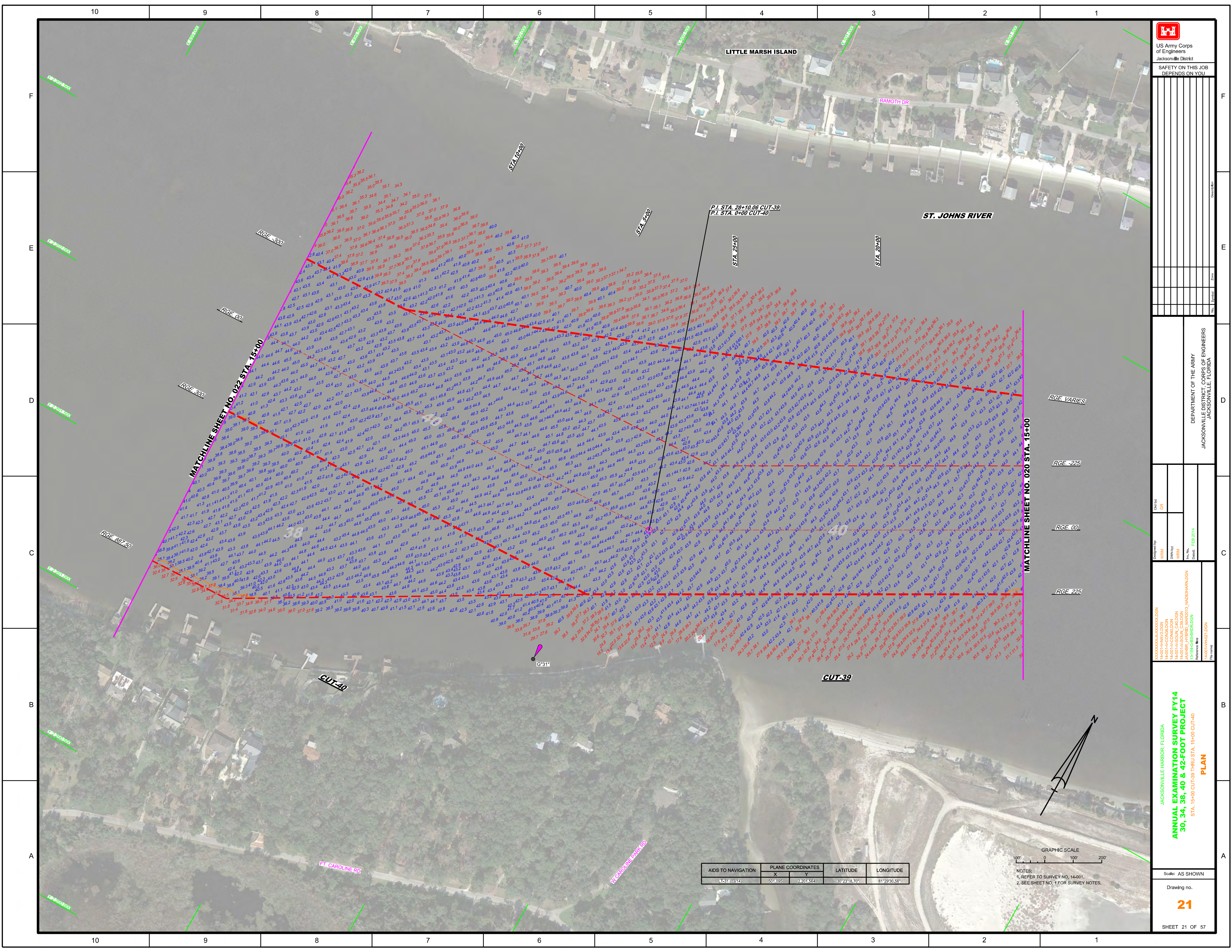
14001M420LGN
14001M420LGN
14001M420LGN
14001M420LGN
14001M420LGN
14001M420LGN
14001M420LGN
14001M420LGN
14001M420LGN
14001M420LGN

JACKSONVILLE HARBOR, FLORIDA
**ANNUAL EXAMINATION SURVEY FY14
30, 34, 38, 40 & 42-FOOT PROJECT**
STA. 10+00 CUT-17 THRU STA. XXXX CUT-39
PLAN

Scale: AS SHOWN
Drawing no. **20**
SHEET 20 OF 57

AIDS TO NAVIGATION	PLANE COORDINATES		LATITUDE	LONGITUDE
	X	Y		
LT. BUOY-27 (03.14)	503.615	2,203.065	30°23'33.85"	81°29'01.86"





US Army Corps of Engineers

 Jacksonville District

 SAFETY ON THIS JOB

 DEPENDS ON YOU

DEPARTMENT OF THE ARMY

 JACKSONVILLE DISTRICT, CORPS OF ENGINEERS

 JACKSONVILLE, FLORIDA

Designated By: **WRM**

 Drawn By: **GR**

 Check By: **WRM**

 Date: **FEB 2014**

JACKSONVILLE HARBOR, FLORIDA

ANNUAL EXAMINATION SURVEY FY14

30, 34, 38, 40 & 42-FOOT PROJECT

 STA. 15+00 CUT-39 THRU STA. 15+00 CUT-40

PLAN

Scale: AS SHOWN

 Drawing No. **21**

 SHEET 21 OF 57

AIDS TO NAVIGATION	PLANE COORDINATES		LATITUDE	LONGITUDE
	X	Y		
LC31(0314)	501,095	2,201,554	30°23'18.70"	81°29'30.56"

GRAPHIC SCALE

 0 100 200'

 NOTES:

 1. REFER TO SURVEY NO. 14-001.

 2. SEE SHEET NO. 1 FOR SURVEY NOTES.

AIDS TO NAVIGATION	PLANE COORDINATES		LATITUDE	LONGITUDE
	X	Y		
BUOY 35 (0314)	496574	2202166	30°23'24.5"	81°02'22.4"
NUN BUOY 38 (0314)	496536	2202839	30°23'57.6"	81°02'53.0"
BUOY 37 (0314)	496428	2202200	30°23'29.4"	81°02'37.6"

BLOUNT ISLAND

BACK RIVER

ST. JOHNS RIVER

CALYPSO ISLAND

"BIMT 101"

MATCHLINE SHEET NO. 050 STA. 14+00

P.I. STA. 33+94.49 CUT-41
P.I. STA. 0+00 CUT-42

MATCHLINE SHEET NO. 024 STA. 13+00

MATCHLINE SHEET NO. 022 STA. 19+00

RGE. -237.50
RGE. 0.00
RGE. 237.50
RGE. VARIES
RGE. VARIES

RGE. 300
RGE. 0.00
RGE. 300
RGE. VARIES
RGE. 0.00

CUT-42

CUT-41

STA. 33+44.95 (CUT-42)
RGE. 499+499

STA. 32+42.08 (CUT-41)
RGE. 420+52



NOTES:
1. REFER TO SURVEY NO. 14-001.
2. SEE SHEET NO. 1 FOR SURVEY NOTES.



US Army Corps of Engineers
Jacksonville District

SAFETY ON THIS JOB
DEPENDS ON YOU

DEPARTMENT OF THE ARMY
JACKSONVILLE DISTRICT, CORPS OF ENGINEERS
JACKSONVILLE, FLORIDA

14-001-A-0002.DGN
14-001-A-0003.DGN
14-001-A-0004.DGN
14-001-A-0005.DGN
14-001-A-0006.DGN
14-001-A-0007.DGN
14-001-A-0008.DGN
14-001-A-0009.DGN
14-001-A-0010.DGN
14-001-A-0011.DGN
14-001-A-0012.DGN
14-001-A-0013.DGN
14-001-A-0014.DGN
14-001-A-0015.DGN
14-001-A-0016.DGN
14-001-A-0017.DGN
14-001-A-0018.DGN
14-001-A-0019.DGN
14-001-A-0020.DGN
14-001-A-0021.DGN
14-001-A-0022.DGN
14-001-A-0023.DGN
14-001-A-0024.DGN
14-001-A-0025.DGN
14-001-A-0026.DGN
14-001-A-0027.DGN
14-001-A-0028.DGN
14-001-A-0029.DGN
14-001-A-0030.DGN
14-001-A-0031.DGN
14-001-A-0032.DGN
14-001-A-0033.DGN
14-001-A-0034.DGN
14-001-A-0035.DGN
14-001-A-0036.DGN
14-001-A-0037.DGN
14-001-A-0038.DGN
14-001-A-0039.DGN
14-001-A-0040.DGN
14-001-A-0041.DGN
14-001-A-0042.DGN
14-001-A-0043.DGN
14-001-A-0044.DGN
14-001-A-0045.DGN
14-001-A-0046.DGN
14-001-A-0047.DGN
14-001-A-0048.DGN
14-001-A-0049.DGN
14-001-A-0050.DGN
14-001-A-0051.DGN
14-001-A-0052.DGN
14-001-A-0053.DGN
14-001-A-0054.DGN
14-001-A-0055.DGN
14-001-A-0056.DGN
14-001-A-0057.DGN
14-001-A-0058.DGN
14-001-A-0059.DGN
14-001-A-0060.DGN
14-001-A-0061.DGN
14-001-A-0062.DGN
14-001-A-0063.DGN
14-001-A-0064.DGN
14-001-A-0065.DGN
14-001-A-0066.DGN
14-001-A-0067.DGN
14-001-A-0068.DGN
14-001-A-0069.DGN
14-001-A-0070.DGN
14-001-A-0071.DGN
14-001-A-0072.DGN
14-001-A-0073.DGN
14-001-A-0074.DGN
14-001-A-0075.DGN
14-001-A-0076.DGN
14-001-A-0077.DGN
14-001-A-0078.DGN
14-001-A-0079.DGN
14-001-A-0080.DGN
14-001-A-0081.DGN
14-001-A-0082.DGN
14-001-A-0083.DGN
14-001-A-0084.DGN
14-001-A-0085.DGN
14-001-A-0086.DGN
14-001-A-0087.DGN
14-001-A-0088.DGN
14-001-A-0089.DGN
14-001-A-0090.DGN
14-001-A-0091.DGN
14-001-A-0092.DGN
14-001-A-0093.DGN
14-001-A-0094.DGN
14-001-A-0095.DGN
14-001-A-0096.DGN
14-001-A-0097.DGN
14-001-A-0098.DGN
14-001-A-0099.DGN
14-001-A-0100.DGN

JACKSONVILLE HARBOR, FLORIDA
ANNUAL EXAMINATION SURVEY FY14
30, 34, 38, 40 & 42-FOOT PROJECT
STA. 19+00 CUT-41 THRU STA. 13+00 CUT-42 &
STA. 0+00 THRU STA. 14+00 CUT-4A
PLAN

Scale: AS SHOWN
Drawing no.
23
SHEET 23 OF 57