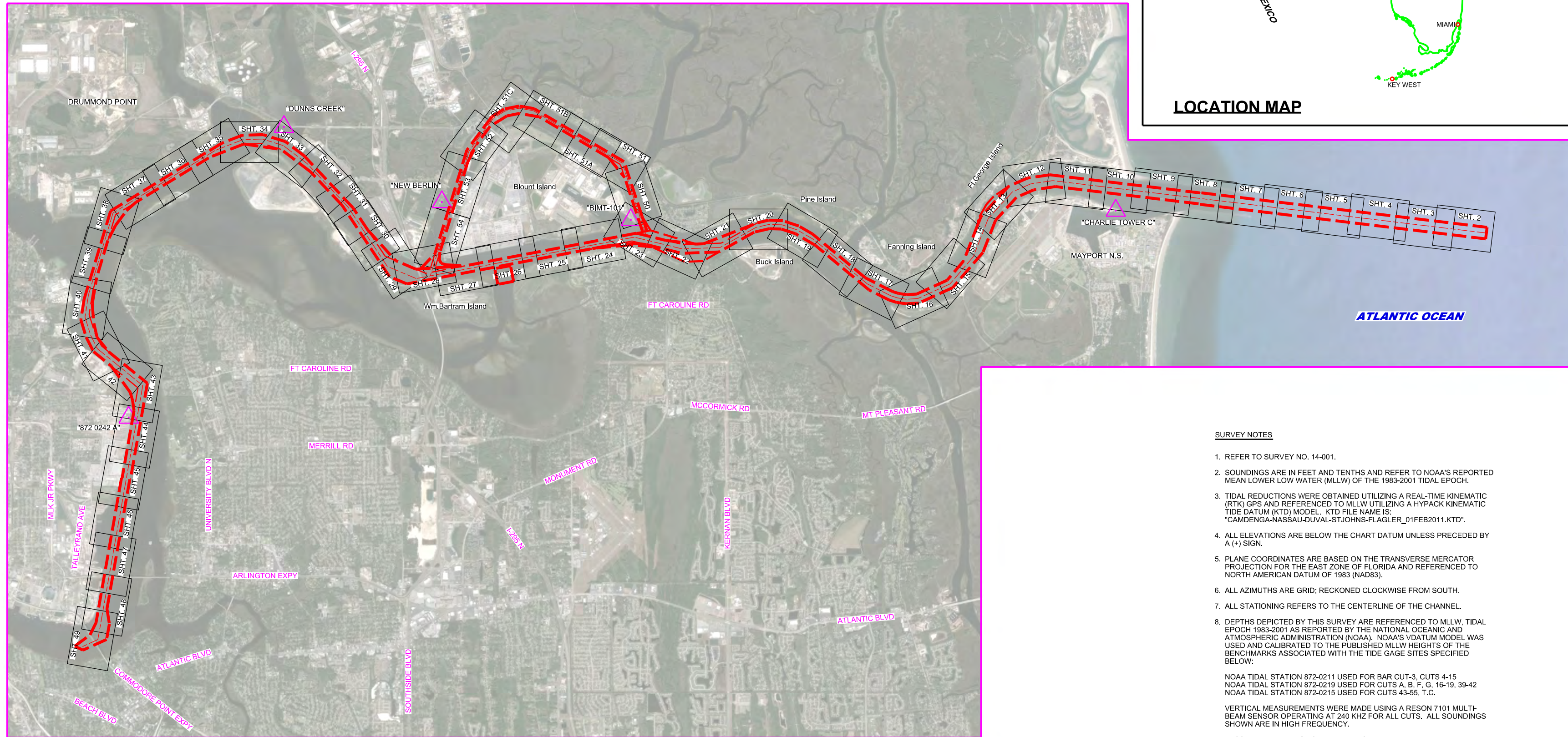


JACKSONVILLE HARBOR, FLORIDA

ANNUAL EXAM SURVEY FY14



SURVEY NOTES

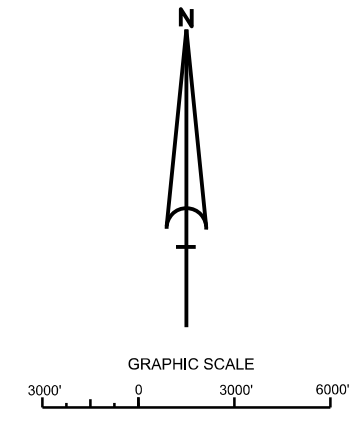
- REFER TO SURVEY NO. 14-001.
- SOUNDINGS ARE IN FEET AND TENTHS AND REFER TO NOAA'S REPORTED MEAN LOWER LOW WATER (MLLW) OF THE 1983-2001 TIDAL EPOCH.
- TIDAL REDUCTIONS WERE OBTAINED UTILIZING A REAL-TIME KINEMATIC (RTK) GPS AND REFERENCED TO MLLW UTILIZING A HYPACK KINEMATIC TIDE DATUM (KTD) MODEL. KTD FILE NAME IS: "CAMDENGGA-NASSAU-DUVAL-ST.JOHNS-FLAGLER_01FEB2011.KTD".
- ALL ELEVATIONS ARE BELOW THE CHART DATUM UNLESS PRECEDED BY A (+) SIGN.
- PLANE COORDINATES ARE BASED ON THE TRANSVERSE MERCATOR PROJECTION FOR THE EAST ZONE OF FLORIDA AND REFERENCED TO NORTH AMERICAN DATUM OF 1983 (NAD83).
- ALL AZIMUTHS ARE GRID; RECKONED CLOCKWISE FROM SOUTH.
- ALL STATIONING REFERS TO THE CENTERLINE OF THE CHANNEL.
- DEPTHS DEPICTED BY THIS SURVEY ARE REFERENCED TO MLLW, TIDAL EPOCH 1983-2001 AS REPORTED BY THE NATIONAL OCEANIC AND ATMOSPHERIC ADMINISTRATION (NOAA). NOAA'S VDATUM MODEL WAS USED AND CALIBRATED TO THE PUBLISHED MLLW HEIGHTS OF THE BENCHMARKS ASSOCIATED WITH THE TIDE GAGE SITES SPECIFIED BELOW.
NOAA TIDAL STATION 872-0211 USED FOR BAR CUT-3, CUTS 4-15
NOAA TIDAL STATION 872-0219 USED FOR CUTS A, B, F, G, 16-19, 39-42
NOAA TIDAL STATION 872-0215 USED FOR CUTS 43-55, T.C.
- VERTICAL MEASUREMENTS WERE MADE USING A RESON 7101 MULTI-BEAM SENSOR OPERATING AT 240 KHZ FOR ALL CUTS. ALL SOUNDINGS SHOWN ARE IN HIGH FREQUENCY.

VESSEL	DATE OF SURVEY	CUT
SB-46	03-07 DEC 2013	BAR CUT-3
SB-46	07 DEC 2013	CUT-4
SB-46	09-11 DEC 2013	TERMINAL CH.
SB-46	13 DEC 2013	CUTS 52-55
SB-46	04 JAN 2014	CUTS A-B
SB-46	16 JAN 2014	CUTS 5-7
SB-46	18 JAN 2014	CUTS 8-13
SB-46	24 JAN 2014	CUT-51
SB-46	04 FEB 2014	CUTS 39-41
SB-46	13 FEB 2014	CUTS 14-19
SB-46	22 FEB 2014	CUTS 43-46
SB-46	24 FEB 2014	CUTS F-G
SB-46	26 FEB 2014	CUT-42

- THIS SURVEY WAS PERFORMED USING REAL-TIME KINEMATIC (RTK) GPS POSITIONING WITH THE FOLLOWING REFERENCE BASE LOCATIONS:
REFERENCE BASE LOCATED AT "CHARLIE TOWER ARP" (PID: BBDC09)
REFERENCE BASE LOCATED AT "BIMT-101" (PID: BBB61)
REFERENCE BASE LOCATED AT "DUNNS CREEK" (PID: BBCT64)
- AIDS TO NAVIGATION WERE LOCATED DURING THIS SURVEY.
- THE INFORMATION DEPICTED ON THIS MAP REPRESENTS THE RESULTS OF SURVEYS MADE ON THE DATES INDICATED ABOVE AND CAN ONLY BE CONSIDERED AS INDICATING THE GENERAL CONDITIONS AT THAT TIME. THIS CHART IS SOLELY FOR THE DISTRIBUTION OF AVAILABLE DEPTHS AT THE TIME OF THE SURVEY AND IS NOT TO BE USED FOR NAVIGATION.
- SURVEY ACCURACY PERFORMANCE STANDARDS, QUALITY CONTROL, AND QUALITY ASSURANCE REQUIREMENTS WERE FOLLOWED DURING THIS SURVEY IN ACCORDANCE WITH USACE EM 1110-2-1003, HYDROGRAPHIC SURVEYING, 1 JAN 02.

LEGEND	
	MONUMENT
	LIGHTED BEACON
	GREEN DAYBEACON
	RED DAYBEACON
	RED LIGHTED BUOY
	GREEN LIGHTED BUOY
	CAN BUOY
	NUN BUOY
	TIDE STAFF
	PROJECT DEPTH

AUTHORIZED PROJECT DEPTH	
42 FT	CUT - 3 (BAR CUT), STA. 0+00 THRU STA. 210+00
40 FT	CUT - 3 (BAR CUT) STA. 210+00 THRU TERMINAL CHANNEL STA. 65+00.
34 FT	TERMINAL CHANNEL, STA. 65+00 THRU STA. 186+21 (APPROX. 1200 FEET UPSTREAM FROM THE HART BRIDGE NEAR COMMODORE POINT).
30 FT	CUT-A, STA. 0+00 THRU 53+10.21
38 FT	OLD RIVER BLOUNT ISLAND (WESTSIDE) CHANNEL CUT-F, STA. 10+00 - NEAR WOODEN FISHING BRIDGE PIER THRU INTERSECTION OF CUT - 42 (DAMES PT. - FULTON CUT - OFF



US Army Corps of Engineers
Jacksonville District
SAFETY ON THIS JOB DEPENDS ON YOU

DEPARTMENT OF THE ARMY
JACKSONVILLE DISTRICT, CORPS OF ENGINEERS
JACKSONVILLE, FLORIDA

ANNUAL EXAMINATION SURVEY FY14
30, 34, 38, 40 & 42-FOOT PROJECT
INDEX, LOCATION AND VICINITY MAP

Scale: AS SHOWN
Drawing no. 1
SHEET 01 OF 57

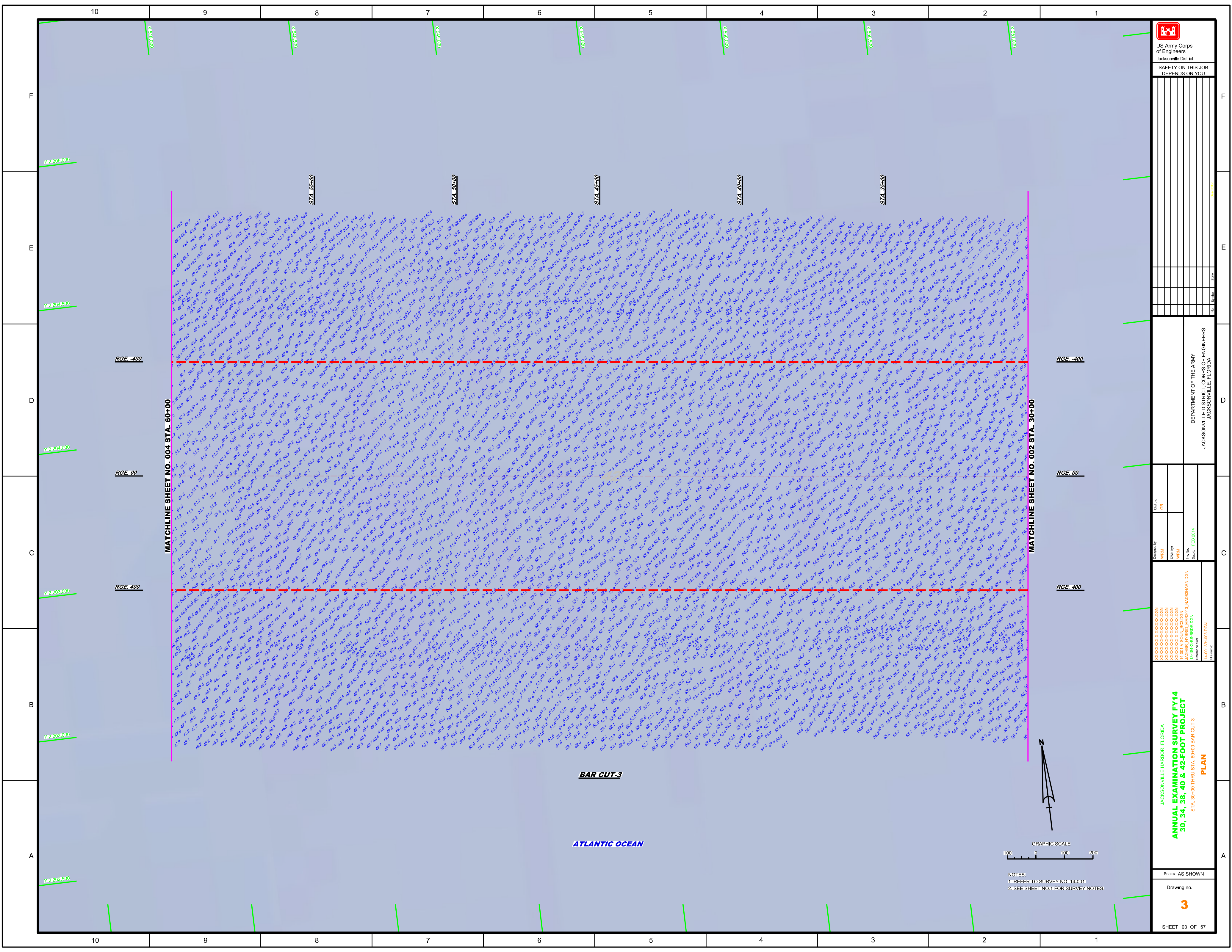
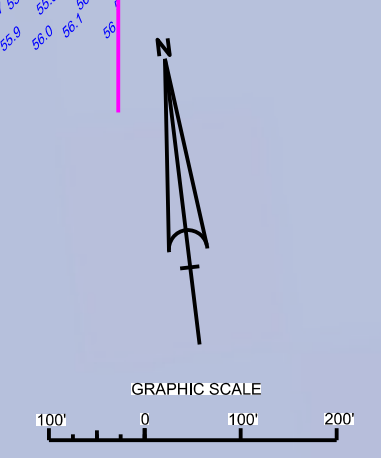


Table with columns for Name, Title, and Date. Includes names like J. H. ... and dates like 1/11/11.

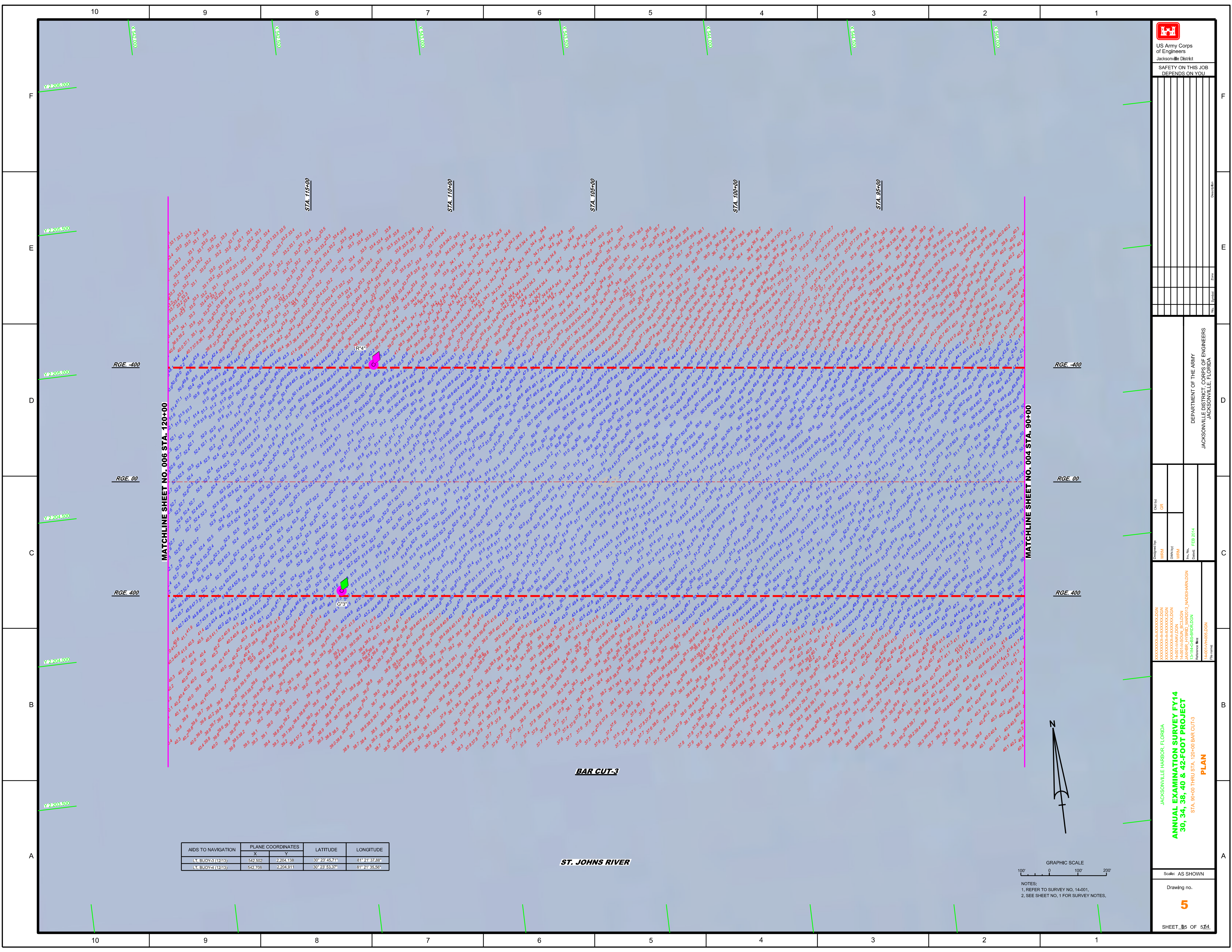
DEPARTMENT OF THE ARMY
JACKSONVILLE DISTRICT, CORPS OF ENGINEERS
JACKSONVILLE, FLORIDA

Table with columns: Designed by (WRM), Checked by (GR), Drawn by (WRM), Date (FEB 2014). Includes project ID: 13-184-GS-BR10-DN.

JACKSONVILLE HARBOR, FLORIDA
ANNUAL EXAMINATION SURVEY FY14
30, 34, 38, 40 & 42-FOOT PROJECT
STA. 30+00 THRU STA. 60+00 BAR CUT-3
PLAN

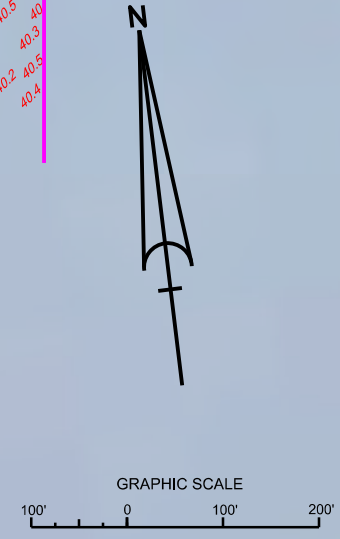


NOTES:
1. REFER TO SURVEY NO. 14-001.
2. SEE SHEET NO. 1 FOR SURVEY NOTES.



AIDS TO NAVIGATION	PLANE COORDINATES		LATITUDE	LONGITUDE
	X	Y		
LT BUOY-3 (12113)	542,502	2,204,138	30° 23' 45.71"	81° 21' 37.88"
LT BUOY-4 (12113)	542,708	2,204,911	30° 23' 53.73"	81° 21' 35.56"

ST. JOHNS RIVER



NOTES:
1. REFER TO SURVEY NO. 14-001.
2. SEE SHEET NO. 1 FOR SURVEY NOTES.

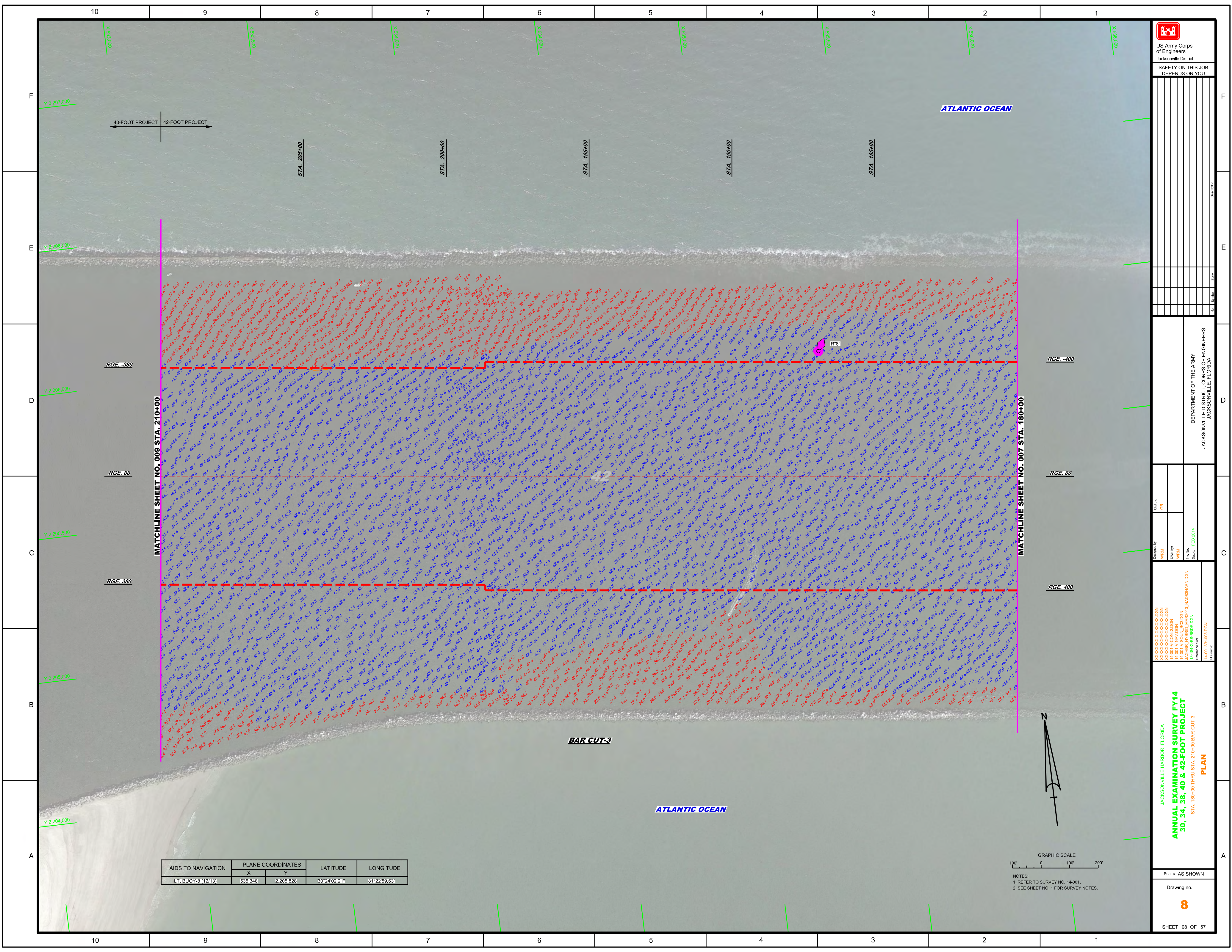


DEPARTMENT OF THE ARMY
JACKSONVILLE DISTRICT, CORPS OF ENGINEERS
JACKSONVILLE, FLORIDA

Designed by: WRM
Checked by: GRL
Drawn by: WRM
Reviewed by: JAWBR (YRBR), MAR2013, NA003HARDSON
Reference: 14-001-PA-001-DGN
Date: FEB 2014

JACKSONVILLE HARBOR, FLORIDA
**ANNUAL EXAMINATION SURVEY FY14
30, 34, 38, 40 & 42-FOOT PROJECT**
STA. 90+00 THRU STA. 120+00 BAR CUT-3
PLAN

Scale: AS SHOWN
Drawing no. **5**
SHEET 5 OF 54



US Army Corps of Engineers
Jacksonville District

SAFETY ON THIS JOB
DEPENDS ON YOU

DEPARTMENT OF THE ARMY
JACKSONVILLE DISTRICT, CORPS OF ENGINEERS
JACKSONVILLE, FLORIDA

Drawn by: GR

Checked by: GR

Designed by: WRM

Reviewed by: WRM

Project No: 14-001

Date: FEB 2014

Reference Map: 13-1846-BS-BR16L00N

Reference Sheet: 14-001-HR06L00N

JACKSONVILLE HARBOR, FLORIDA

ANNUAL EXAMINATION SURVEY FY14
30, 34, 38, 40 & 42-FOOT PROJECT

STA. 190+00 THRU STA. 210+00 BAR CUT-3

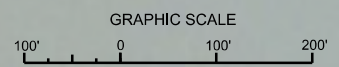
PLAN

Scale: AS SHOWN

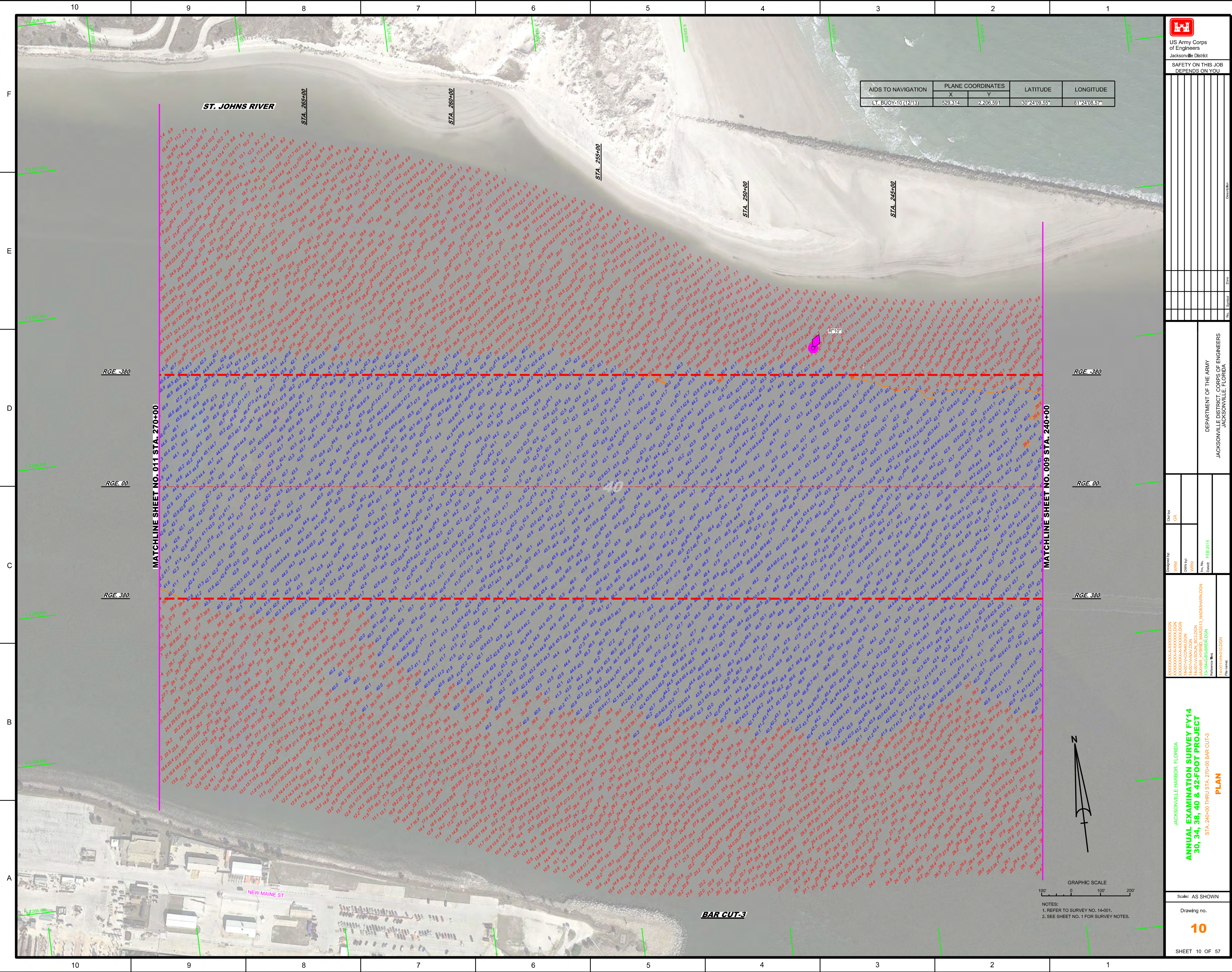
Drawing No. **8**

SHEET 08 OF 57

AIDS TO NAVIGATION	PLANE COORDINATES		LATITUDE	LONGITUDE
	X	Y		
LT. BUOY-8 (12/13)	535.948	2205.828	30°24'02.21"	81°22'29.63"



NOTES:
1. REFER TO SURVEY NO. 14-001.
2. SEE SHEET NO. 1 FOR SURVEY NOTES.

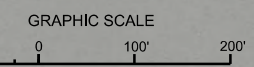
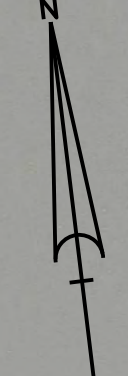


US Army Corps of Engineers
Jacksonville District
SAFETY ON THIS JOB
DEPENDS ON YOU

AIDS TO NAVIGATION	PLANE COORDINATES		LATITUDE	LONGITUDE
	X	Y		
LT. BUOY-10 (12/13)	529,314	2,206,591	30°24'08.55"	81°24'08.57"

MATCHLINE SHEET NO. 011 STA. 270+00

MATCHLINE SHEET NO. 009 STA. 240+00



NOTES:
1. REFER TO SURVEY NO. 14-001.
2. SEE SHEET NO. 1 FOR SURVEY NOTES.

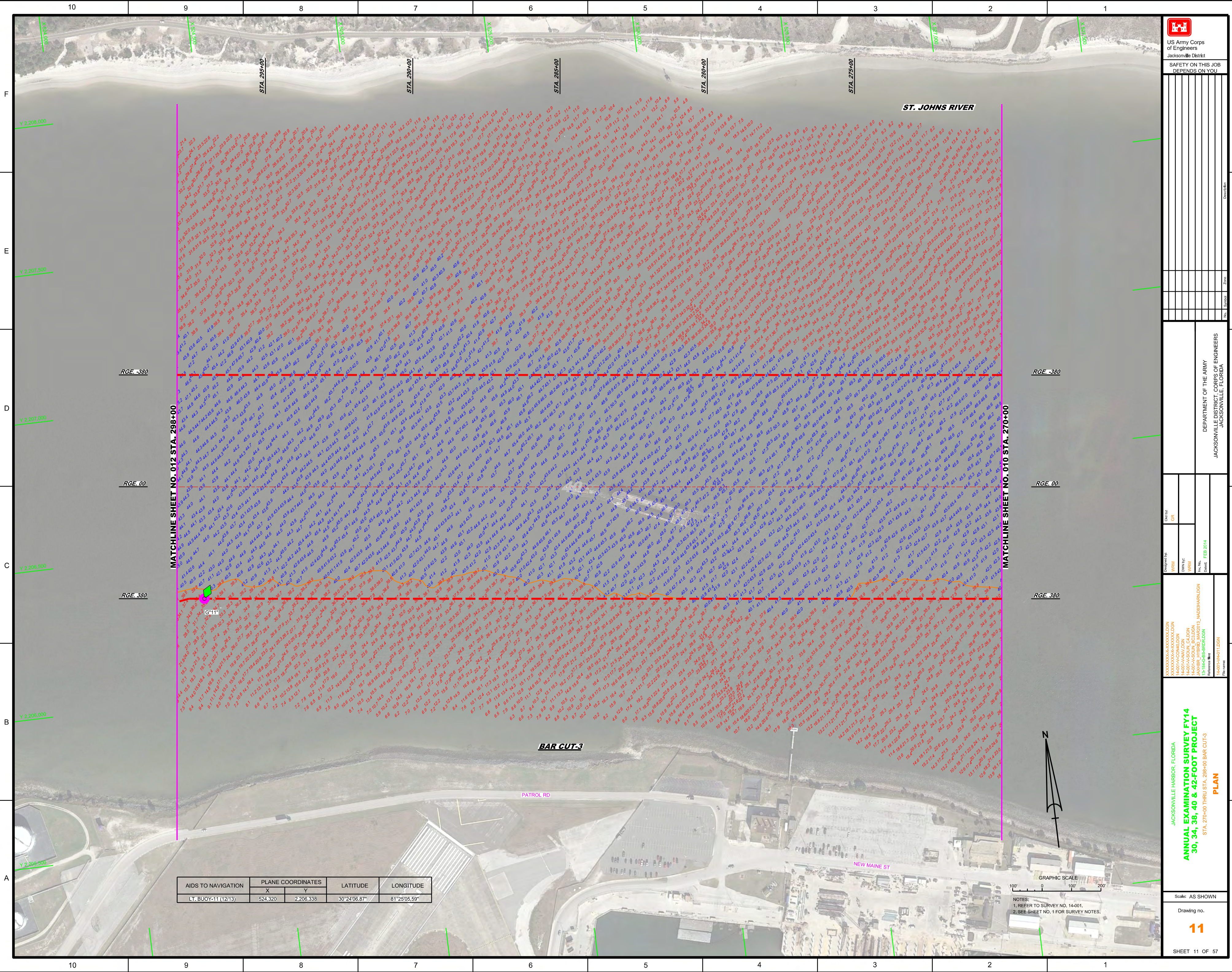
DEPARTMENT OF THE ARMY
JACKSONVILLE DISTRICT, CORPS OF ENGINEERS
JACKSONVILLE, FLORIDA

Call by: GR
Designed by: VHM
Drawn by: VHM
Checked by: VHM
Date: FEB. 2014

XXXXXXXXXXXXXXXXXXXX
XXXXXXXXXXXXXXXXXXXX
XXXXXXXXXXXXXXXXXXXX
14-001-000-000
14-001-000-000
14-001-000-000
14-001-000-000
14-001-000-000
14-001-000-000
14-001-000-000
14-001-000-000
14-001-000-000
XXXXXXXXXXXXXXXXXXXX

JACKSONVILLE HARBOR, FLORIDA
ANNUAL EXAMINATION SURVEY FY14
30, 34, 38, 40 & 42-FOOT PROJECT
STA. 240+00 THRU STA. 270+00 BAR CUT-3
PLAN

Scale: AS SHOWN
Drawing no. **10**
SHEET 10 OF 57



AIDS TO NAVIGATION	PLANE COORDINATES		LATITUDE	LONGITUDE
	X	Y		
LT. BUOY-11 (12/13)	524.320	2,206.338	30°24'06.87"	81°25'05.59"



NOTES:
 1. REFER TO SURVEY NO. 14-011.
 2. SEE SHEET NO. 1 FOR SURVEY NOTES.

US Army Corps of Engineers
 Jacksonville District

SAFETY ON THIS JOB DEPENDS ON YOU

ANNUAL EXAMINATION SURVEY FY14
30, 34, 38, 40 & 42-FOOT PROJECT
PLAN

JACKSONVILLE HARBOR, FLORIDA
 STA. 270+00 THRU STA. 298+00 BAR CUT-3

Scale: AS SHOWN
 Drawing no. **11**
 SHEET 11 OF 57

DEPARTMENT OF THE ARMY
 JACKSONVILLE, FLORIDA

Designed by: **WRM**
 Drawn by: **WRM**
 Checked: **WRM**
 Date: **FEB 2014**

Client: **GRI**

Reference file: **14-011\H01.DGN**