

MIAMI HARBOR DADE COUNTY, FLORIDA EXAMINATION SURVEY FY13

SURVEY NOTES

- REFER TO SURVEY NO. 13-182.
 - SOUNDINGS ARE IN FEET AND TENTHS AND REFER TO NOAA'S REPORTED MEAN LOWER LOW WATER (MLLW) OF THE 1983-2001 TIDAL EPOCH.
 - TIDAL REDUCTIONS WERE OBTAINED UTILIZING A REAL-TIME KINEMATIC (RTK) GPS AND REFERENCED TO MLLW UTILIZING A HYPACK KINEMATIC TIDE DATUM (KTD) MODEL NAMED "MIAMI-HBR&RIV-03AUG2010.KTD".
 - ALL ELEVATIONS ARE BELOW THE CHART DATUM UNLESS PRECEDED BY A (+) SIGN.
 - PLANE COORDINATES ARE BASED ON THE TRANSVERSE MERCATOR PROJECTION FOR THE EAST ZONE OF FLORIDA AND REFERENCED TO NORTH AMERICAN DATUM OF 1983, REALIZATION OF 2007 (NAD83(2007)).
 - ALL AZIMUTHS ARE GRID; RECKONED CLOCKWISE FROM SOUTH.
 - ALL STATIONING REFERS TO THE CENTERLINE OF THE CHANNEL.
 - THIS SURVEY WAS PERFORMED USING REAL-TIME KINEMATIC (RTK) GPS POSITIONING WITH THE FOLLOWING REFERENCE BASE LOCATIONS:
REFERENCE BASE LOCATED AT "USCG MIAMI ARP" (PID: BBDD68)
TIDE STAFF SET FROM "MH 18 RM 1" (PID: AC2178)
 - DEPTHS DEPICTED BY THIS SURVEY ARE REFERENCED TO MLLW, TIDAL EPOCH 1983-2001 BASED ON NOAA'S VDATUM.
 - VERTICAL MEASUREMENTS WERE MADE USING A R2SONIC 2024 MULTI-BEAM SENSOR OPERATING AT 230 KHZ (HIGH FREQUENCY). ALL SOUNDINGS SHOWN ARE IN HIGH FREQUENCY.
- | VESSEL | DATE OF SURVEY | CUT |
|---------------|----------------|-----------------------|
| SV FLORIDA II | 22 AUG 2013 | CUT-4 |
| SV FLORIDA II | 23 AUG 2013 | CUTS 3-4, MARINA AREA |
| SV FLORIDA II | 24 AUG 2013 | CUT-4, T.B. |
- AIDS TO NAVIGATION WERE LOCATED DURING THIS SURVEY.
 - THE INFORMATION DEPICTED ON THIS MAP REPRESENTS THE RESULTS OF OF SURVEYS MADE ON THE DATES INDICATED ABOVE AND CAN ONLY BE CONSIDERED AS INDICATING THE GENERAL CONDITIONS AT THAT TIME. THIS CHART IS SOLELY FOR THE DISTRIBUTION OF AVAILABLE DEPTHS AT THE TIME OF THE SURVEY AND IS NOT TO BE USED FOR NAVIGATION.
 - SURVEY ACCURACY PERFORMANCE STANDARDS, QUALITY CONTROL, AND QUALITY ASSURANCE REQUIREMENTS WERE FOLLOWED DURING THIS SURVEY IN ACCORDANCE WITH USACE EM 1110-2-1003, HYDROGRAPHIC SURVEYING, 1 JAN 02.

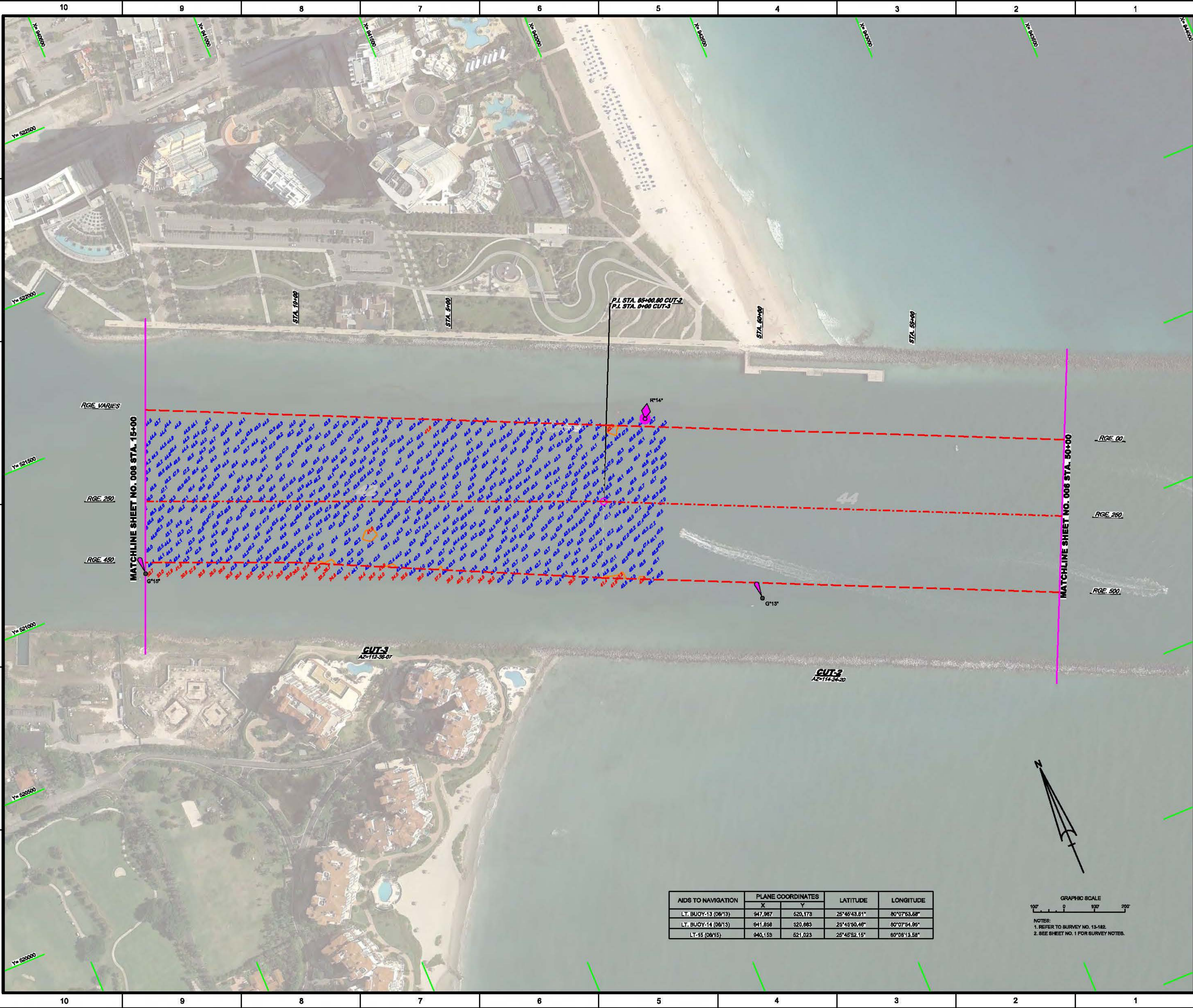
LEGEND	
	GPS MONUMENT
	LIGHTED BEACON
	GREEN DAYBEACON
	RED DAYBEACON
	RED LIGHTED BUOY
	GREEN LIGHTED BUOY
	CAN BUOY
	NUN BUOY
	TIDE STAFF
	PROJECT DEPTH

US Army Corps of Engineers
Jacksonville District
SAFETY ON THIS JOB DEPENDS ON YOU

DEPARTMENT OF THE ARMY
JACKSONVILLE DISTRICT, CORPS OF ENGINEERS
JACKSONVILLE, FLORIDA

MIAMI HARBOR
DADE COUNTY, FLORIDA
EXAMINATION SURVEY FY13
35, 36, 42 AND 46-FOOT PROJECT
INDEX, LOCATION AND VICINITY MAP

Scale: AS SHOWN
Drawing no. **1/8**
SHEET 01 OF 18



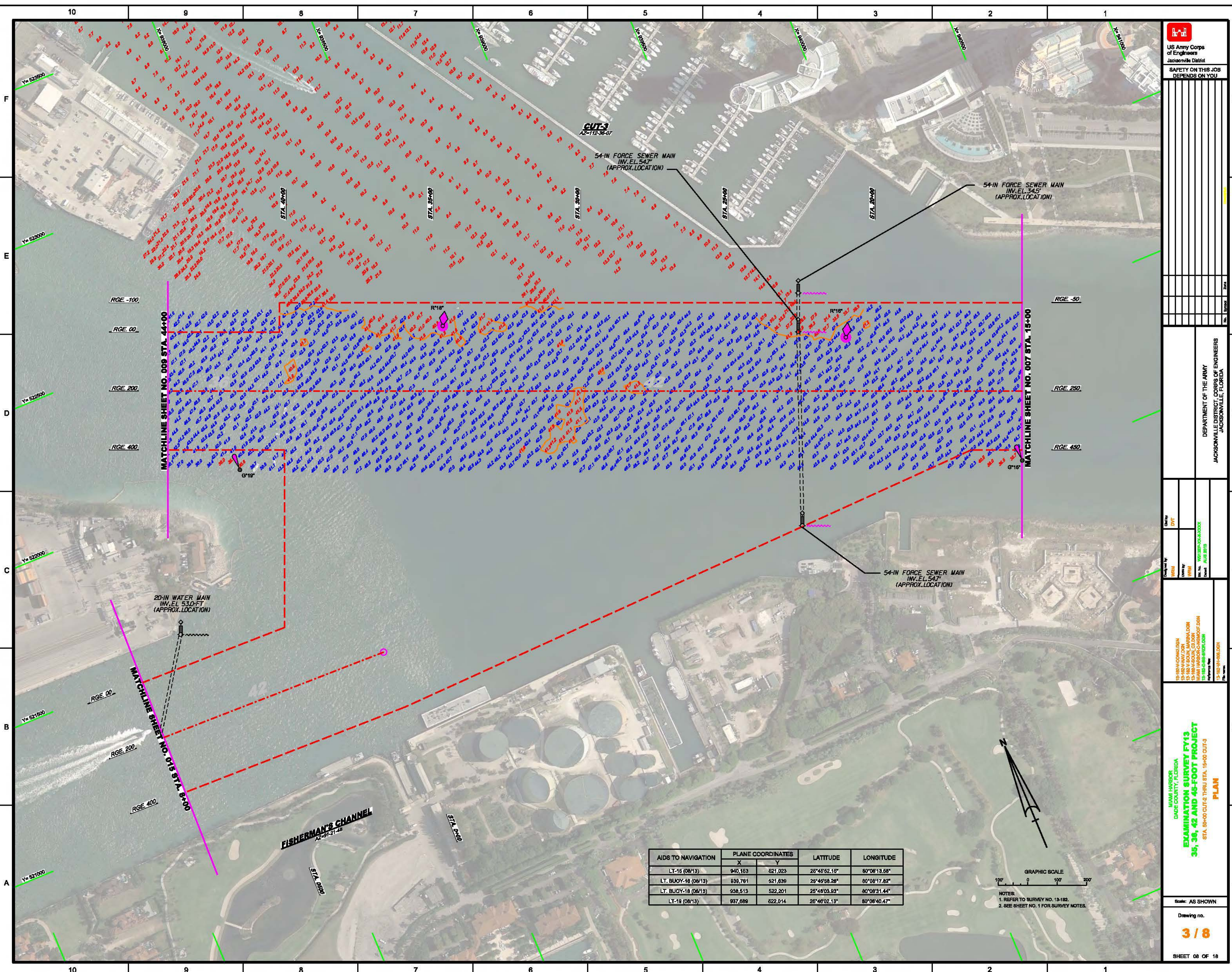
DEPARTMENT OF THE ARMY
JACKSONVILLE DISTRICT, CORPS OF ENGINEERS
JACKSONVILLE, FLORIDA

Checked by: DWT
Designed by: WRM
Drawn by: WRM
In Charge: WRM
Reference No: 13-182-0000
Date: AUG 2015

MAMI HARBOR
DADE COUNTY, FLORIDA
**EXAMINATION SURVEY FY13
36, 38, 42 AND 46-FOOT PROJECT**
STA. 50+00 CUT-2 THRU STA. 15+00 CUT-3
PLAN

AIDS TO NAVIGATION	PLANE COORDINATES		LATITUDE	LONGITUDE
	X	Y		
LT. BUOY-13 (08/13)	947,987	520,173	25°46'43.61"	80°07'53.58"
LT. BUOY-14 (08/13)	941,858	520,863	25°45'50.46"	80°07'54.95"
LT-15 (08/15)	940,153	521,023	25°45'52.15"	80°08'13.58"

GRAPHIC SCALE
100' 0 100' 200'
NOTES:
1. REFER TO SURVEY NO. 13-182.
2. SEE SHEET NO. 1 FOR SURVEY NOTES.



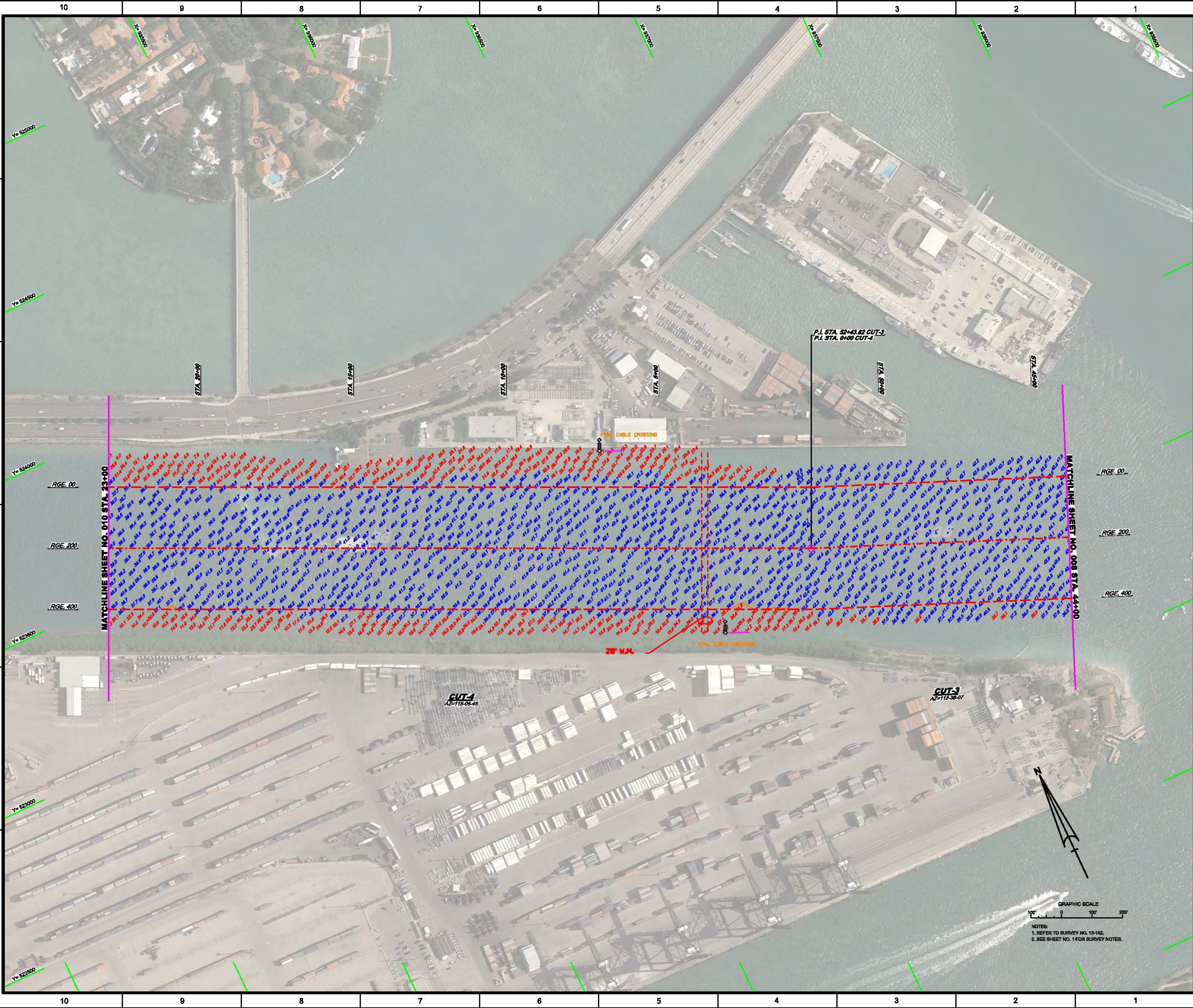
AIDS TO NAVIGATION	PLANE COORDINATES		LATITUDE	LONGITUDE
	X	Y		
LT-16 (08/13)	940,163	621,023	25°46'52.15"	80°08'13.68"
LT. BUOY-16 (08/13)	636,761	521,636	25°45'58.26"	80°08'17.62"
LT. BUOY-18 (08/13)	938,513	522,201	25°46'03.93"	80°08'31.44"
LT-19 (08/13)	937,689	622,014	25°46'02.13"	80°08'40.47"

GRAPHIC SCALE
 0 100 200
 NOTES:
 1. REFER TO SURVEY NO. 13-182.
 2. SEE SHEET NO. 1 FOR SURVEY NOTES.

DEPARTMENT OF THE ARMY
 JACKSONVILLE DISTRICT, CORPS OF ENGINEERS
 JACKSONVILLE, FLORIDA

Checked by: DWT
 Drawn by: WPM
 Project No.: 13-182-00-00-0000
 Date: 04/28/2013

MIAMI HARBOR
 DADE COUNTY, FLORIDA
EXAMINATION SURVEY FY13
35, 36, 42 AND 46-FOOT PROJECT
 STA. 50+00 CUT-2 THRU STA. 15+00 CUT-3
PLAN



GRAPHIC SCALE
 0 100 200
 NOTES:
 1. REFER TO SURVEY NO. 13-182.
 2. SEE SHEET NO. 1 FOR SURVEY NOTES.

MATCHLINE SHEET NO. 010 STA. 23+00

MATCHLINE SHEET NO. 008 STA. 44+00

RGE 00

RGE 00

RGE 200

RGE 200

RGE 400

RGE 400

STA. 23+00

STA. 19+00

STA. 10+00

STA. 5+00

STA. 0+00

STA. 0+00

P.I. STA. 52+43.82 CUT-3
 P.I. STA. 0+00 CUT-4

FPM CABLE CROSSING

28' WALL
 FPM CABLE CROSSING

CUT-1
 AZ-115-05-45

CUT-3
 AZ-113-38-07



MIA HARBOR EXAMINATION SURVEY FY13
DADE COUNTY, FLORIDA
STA. 23+00 THRU STA. 53+00 CUT-1
PLAN

13 182-A CONDS DGN
13 182-A-0103-00-00
MIA HARBOR-C-HMPOC.DGN
13 182-A-0103-00-00
13 182-A-0103-00-00
13 182-A-0103-00-00

JACKSONVILLE DISTRICT, CORPS OF ENGINEERS
JACKSONVILLE, FLORIDA
DEPARTMENT OF THE ARMY

No.	Special Zone

SAFETY ON THIS JOB
DEPENDS ON YOU

US Army Corps
of Engineers
Jacksonville District

GRAPHIC SCALE
100' 200' 300' 400'
NOTES:
1. REFER TO SURVEY NO. 13-182.
2. SEE SHEET NO. 1 FOR SURVEY NOTES.



MATCHLINE SHEET NO. 009 STA. 23+00

MATCHLINE SHEET NO. 011 STA. 53+00

STA. 25+00

STA. 30+00

STA. 35+00

STA. 40+00

STA. 45+00

STA. 50+00

RGE. 00

RGE. 200

RGE. 400

RGE. 00

RGE. 200

RGE. 400

X= 935500

X= 935000

X= 934500

X= 934000

X= 933500

X= 933000

X= 932500

02525 24

02525 24

02525 24

02525 24

02525 24

02525 24

PLAN

STA. 82+00 THRU STA. 82+00 CUT-1
STA. 83+00 THRU STA. 82+00 CUT-4
EXAMINATION SURVEY FY13
MIAMI HARBOR
DADE COUNTY, FLORIDA

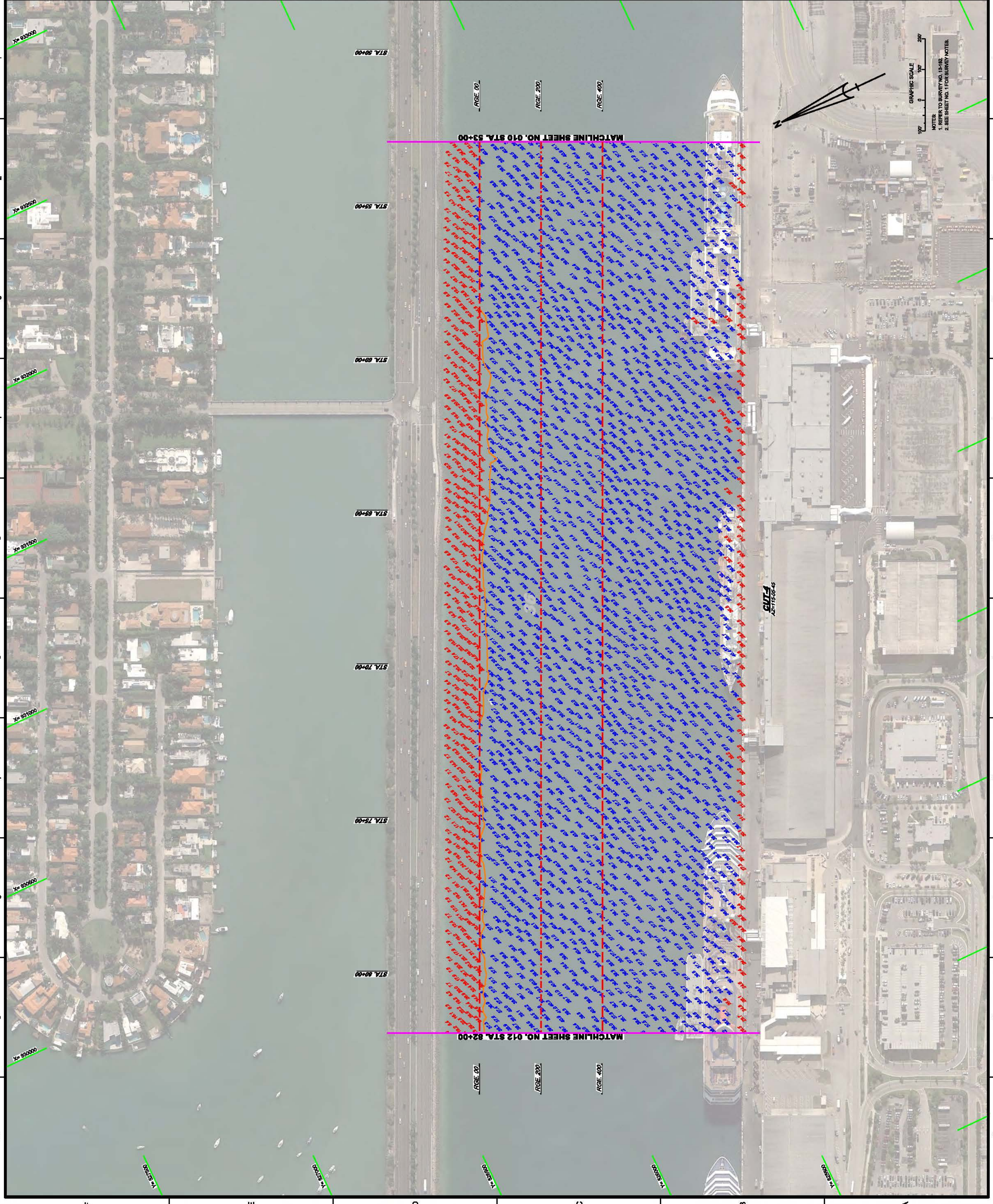
DEPARTMENT OF THE ARMY
JACKSONVILLE DISTRICT, CORPS OF ENGINEERS
JACKSONVILLE, FLORIDA

No.	Speed	Zone

US Army Corps of Engineers
Jacksonville District
SAFETY ON THIS JOB
DEPENDS ON YOU

GRAPHIC SCALE
1" = 200'
1" = 400'
1" = 800'

NOTES:
1. REFER TO SURVEY NO. 13-182
2. SEE SHEET NO. 1 FOR SURVEY NOTES.



MATCHLINE SHEET NO. 010 STA. 83+00

MATCHLINE SHEET NO. 012 STA. 82+00

CUT-4
AS-17500-4

1	F
2	E
3	D
4	C
5	B
6	A
7	A
8	A
9	A
10	A

PLAN
 STA. 82+00 THRU STA. 113+00 CUT-4
EXAMINATION SURVEY FY13
 MIAMI HARBOR
 DADE COUNTY, FLORIDA

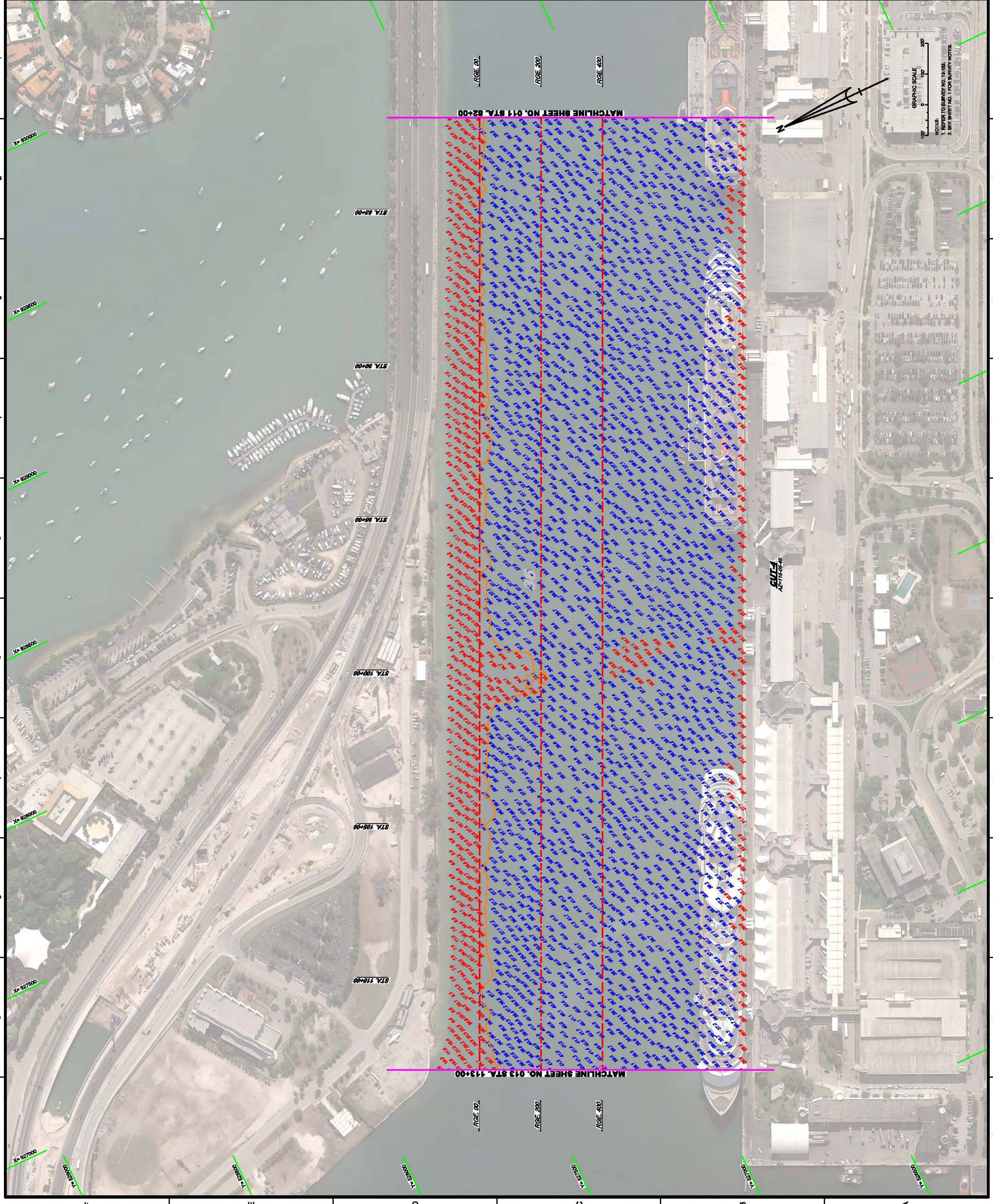
13-182-A-CORING.DWG
 13-182-A-CORING.DWG
 13-182-A-CORING.DWG
 13-182-A-CORING.DWG
 13-182-A-CORING.DWG

Checked by:	WJW
Drawn by:	WJW
Design by:	DVT
Scale:	AS SHOWN
Date:	08/28/13

DEPARTMENT OF THE ARMY
 JACKSONVILLE DISTRICT, CORPS OF ENGINEERS
 JACKSONVILLE, FLORIDA

Task:	
Priority:	
Start Date:	
End Date:	
Status:	
Comments:	

US Army Corps of Engineers
 Jacksonville District
 SAFETY ON THIS JOB
 DEPENDS ON YOU



MATCHLINE SHEET NO. 011 STA. 82+00

MATCHLINE SHEET NO. 013 STA. 113+00

GRAPHIC SCALE
 1" = 100'
 1" = 200'

NOTES:
 1. REFER TO SURVEY NO. 13-182
 2. SEE SHEET NO. 1 FOR SURVEY NOTES

CUT-4

X= 920000

X= 920600

X= 920000

X= 920600

X= 920600

X= 921200

X= 921000

X= 920600

X= 920600

X= 920600

X= 920600

X= 920600

STA. 85+00

STA. 90+00

STA. 95+00

STA. 100+00

STA. 105+00

STA. 110+00

RGE. 00

RGE. 200

RGE. 400

RGE. 00

RGE. 200

RGE. 400

1

2

3

4

5

6

7

8

9

10

1

2

3

4

5

6

7

8

9

10

F

E

D

C

B

A

F

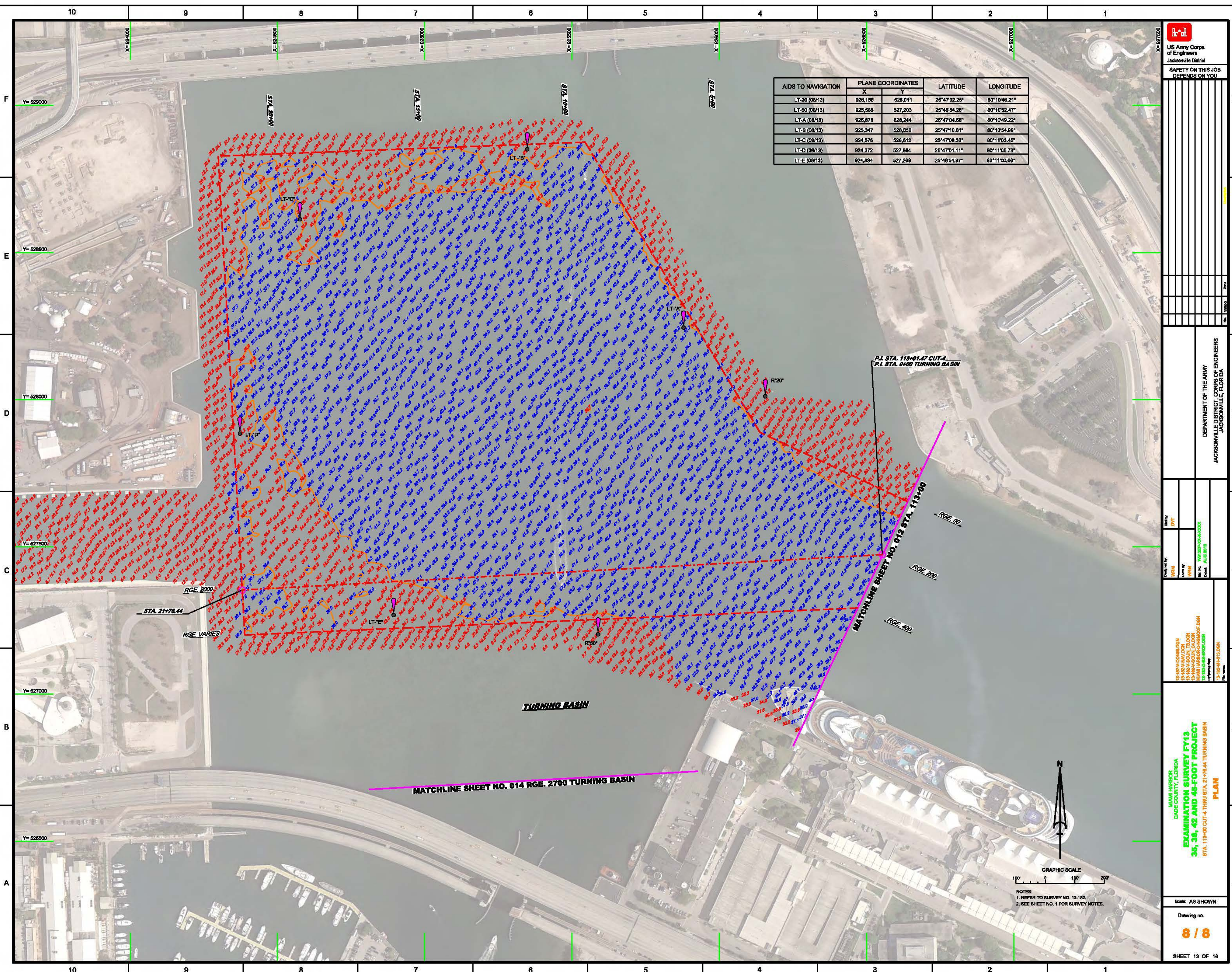
E

D


C

B

A



AIDS TO NAVIGATION	PLANE COORDINATES		LATITUDE	LONGITUDE
	X	Y		
LT-20 (08/13)	925,156	528,011	25°47'02.25"	80°10'46.21"
LT-50 (08/13)	925,588	527,203	25°48'54.28"	80°10'52.47"
LT-A (08/13)	926,878	528,244	25°47'04.58"	80°10'49.22"
LT-B (08/13)	925,347	528,850	25°47'10.61"	80°10'54.89"
LT-C (08/13)	924,576	528,612	25°47'08.30"	80°11'03.45"
LT-D (08/13)	924,372	527,884	25°47'01.11"	80°11'05.73"
LT-E (08/13)	924,894	527,268	25°48'54.97"	80°11'00.08"



US Army Corps of Engineers
Jacksonville District

SAFETY ON THIS JOB
DEPENDS ON YOU

DATE: 08/13/2013

TIME: 10:00 AM

PROJECT: EXAMINATION SURVEY FY13 35, 36, 42 AND 46-FOOT PROJECT STA. 113+00 CUT-4 THRU STA. 21+78.44 TURNING BASIN

SCALE: AS SHOWN

DRAWING NO.: 8/8

SHEET 13 OF 18

DEPARTMENT OF THE ARMY
JACKSONVILLE DISTRICT, CORPS OF ENGINEERS
JACKSONVILLE, FLORIDA

DATE: 08/13/2013

TIME: 10:00 AM

PROJECT: EXAMINATION SURVEY FY13 35, 36, 42 AND 46-FOOT PROJECT STA. 113+00 CUT-4 THRU STA. 21+78.44 TURNING BASIN

SCALE: AS SHOWN

DRAWING NO.: 8/8

SHEET 13 OF 18