

PITHLACHOSCOTEE RIVER PASCO COUNTY, FLORIDA HYDROGRAPHIC EXAM SURVEY FY13 6-FOOT PROJECT

SURVEY NOTES

1. REFER TO SURVEY NO. 13-181.
2. SOUNDINGS ARE IN FEET AND TENTHS AND REFER TO NOAA'S REPORTED MEAN LOWER LOW WATER (MLLW) OF THE 1983-2001 TIDAL EPOCH.
3. TIDAL REDUCTIONS WERE OBTAINED UTILIZING A REAL-TIME KINEMATIC (RTK) GPS AND REFERENCED TO MLLW UTILIZING A HYPACK KINEMATIC TIDE DATUM (KT) MODEL. KTD FILE NAME IS: *SPC-FL-WEST-2010-12-07.KTD*.
4. ALL ELEVATIONS ARE BELOW THE CHART DATUM UNLESS PRECEDED BY A (+) SIGN.
5. PLANE COORDINATES ARE BASED ON THE TRANSVERSE MERCATOR PROJECTION FOR THE WEST ZONE OF FLORIDA AND REFERENCED TO NORTH AMERICAN DATUM OF 1983 (NAD83).
6. ALL AZIMUTHS ARE GRID; RECKONED CLOCKWISE FROM SOUTH.
7. ALL STATIONING REFERS TO THE CENTERLINE OF THE CHANNEL.
8. THIS SURVEY WAS PERFORMED USING REAL-TIME KINEMATIC (RTK) GPS POSITIONING WITH THE FOLLOWING REFERENCE BASE LOCATION:
REFERENCE BASE LOCATED AT '872 7019 D' (PID# DG5213)
9. DEPTHS DEPICTED BY THIS SURVEY ARE REFERENCED TO MLLW, TIDAL EPOCH 1983-2001 AS REPORTED BY THE NATIONAL OCEANIC AND ATMOSPHERIC ADMINISTRATION (NOAA). NOAA'S VDATUM MODEL WAS USED AND CALIBRATED TO THE PUBLISHED MLLW HEIGHTS OF THE BENCHMARKS ASSOCIATED WITH THE TIDE GAGE SITES SPECIFIED BELOW:
NOAA TIDAL STATION 872-7012 USED FOR ALL CUTS. (PID# AL7433)
VERTICAL MEASUREMENTS WERE MADE USING A ROSS SMARTSOUNDER DUAL-FREQUENCY 28/200 KHZ SINGLE-BEAM TRANSDUCER. ALL SOUNDINGS SHOWN ARE IN HIGH FREQUENCY.

VESSEL	DATE OF SURVEY	CUT
WB-34	11-12 DEC 2013	1-16

10. AIDS TO NAVIGATION WERE LOCATED DURING THIS SURVEY.
11. THE INFORMATION DEPICTED ON THIS MAP REPRESENTS THE RESULTS OF OF SURVEYS MADE ON THE DATES INDICATED ABOVE AND CAN ONLY BE CONSIDERED AS INDICATING THE GENERAL CONDITIONS AT THAT TIME. THIS CHART IS SOLELY FOR THE DISTRIBUTION OF AVAILABLE DEPTHS AT THE TIME OF THE SURVEY AND IS NOT TO BE USED FOR NAVIGATION.
12. SURVEY ACCURACY PERFORMANCE STANDARDS, QUALITY CONTROL, AND QUALITY ASSURANCE REQUIREMENTS WERE FOLLOWED DURING THIS SURVEY IN ACCORDANCE WITH USACE EM 1110-2-1003, HYDROGRAPHIC SURVEYING, 1 JAN 02.

LEGEND	
	GPS MONUMENT
	LIGHTED BEACON
	GREEN DAYBEACON
	RED DAYBEACON
	RED LIGHTED BUOY
	GREEN LIGHTED BUOY
	CAN BUOY
	NUN BUOY
	TIDE STAFF
	PROJECT DEPTH

US Army Corps
of Engineers
Jacksonville District

SAFETY ON THIS JOB
DEPENDS ON YOU

	Describer Zone Date Scale
DEPARTMENT OF THE ARMY JACKSONVILLE DISTRICT, CORPS OF ENGINEERS JACKSONVILLE, FLORIDA	
Check By: GRL Drawn By: WRM File No: 13-181-0107-01 Date: DEC 2013	
<p>PITHLACHOSCOTEE RIVER PASCO COUNTY, FLORIDA HYDROGRAPHIC EXAM SURVEY FY13 6-FOOT PROJECT INDEX, LOCATION AND VICINITY MAP</p>	
Scale: AS SHOWN	
Drawing no. 1	
SHEET 01 OF 10	

US Army Corps of Engineers
Jacksonville District

SAFETY ON THIS JOB
DEPENDS ON YOU

DEPARTMENT OF THE ARMY
JACKSONVILLE DISTRICT, CORPS OF ENGINEERS
JACKSONVILLE, FLORIDA

Checked by: GRL
Designed by: WRM
Drawn by: WRM
File No.: 13-18-11-0000
Date: DEC 2013
Reference Map: 13-18-11-0000
File name:

HYDROGRAPHIC EXAM SURVEY FY13
6-FOOT PROJECT
STA. 0+00 THRU STA. 31+00 CUT-1
PLAN

RTTHACHASCOTTEE RIVER
PASCO COUNTY, FLORIDA

Scale: AS SHOWN
Drawing no. **2**
SHEET 02 OF 10

10 9 8 7 6 5 4 3 2 1

X=407500 X=408000 X=408500 X=409000 X=409500 X=410000 X=410500 X=411000

F Y=1438500

E Y=1438000

D Y=1437500

C Y=1437000

B Y=1436500

A Y=1436000

STA. 0+00 STA. 5+00 STA. 10+00 STA. 15+00 STA. 20+00 STA. 25+00 STA. 30+00

RGE. 75
RGE. 37.5
RGE. 0

MATCHLINE SHEET NO. 007 MATCHLINE SHEET NO. 003 STA. 31+00

CUT-1

G-1, G-3, R-2A, R-2B



AIDS TO NAVIGATION	PLANE COORDINATES		LATITUDE	LONGITUDE
	X	Y		
1 (12/13)	408,014	1,437,312	28°17'07.99"	82°46'15.73"
DBN-2 (12/13)	408,148	1,437,168	28°17'05.56"	82°46'14.223"
DBN-2A (12/13)	409,221	1,437,194	28°17'06.89"	82°46'02.23"
DBN-3 (12/13)	409,232	1,437,305	28°17'08.00"	82°46'02.12"

GRAPHIC SCALE
100' 0 100' 200'

NOTES:
1. REFER TO SURVEY NO. 13-181.
2. SEE SHEET NO. 1 FOR SURVEY NOTES.

No.	Symbol	Zone

Check by: GRL

Designed by: WRM, JFW, GRL

Date: DEC 2013

XXXXXXXXXXXXXXXXXXXX
XXXXXXXXXXXXXXXXXXXX
XXXXXXXXXXXXXXXXXXXX
XXXXXXXXXXXXXXXXXXXX
XXXXXXXXXXXXXXXXXXXX
XXXXXXXXXXXXXXXXXXXX
XXXXXXXXXXXXXXXXXXXX
XXXXXXXXXXXXXXXXXXXX
XXXXXXXXXXXXXXXXXXXX
XXXXXXXXXXXXXXXXXXXX

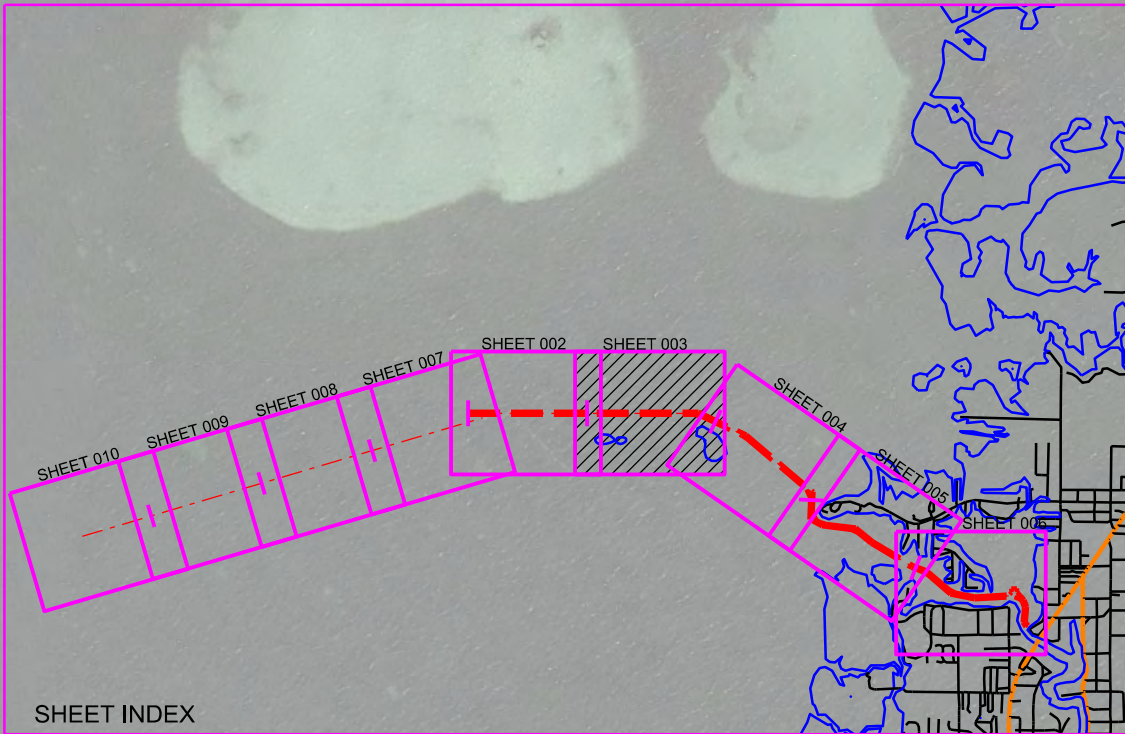
RT18ACASCOBEE RIVER
PASCO COUNTY, FLORIDA
**HYDROGRAPHIC EXAM SURVEY FY13
6-FOOT PROJECT**
STA. 31+00 CUT-1 THRU STA. 5+00 CUT-2
PLAN

Scale: AS SHOWN

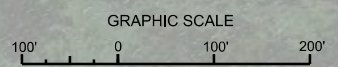
Drawing no.

3

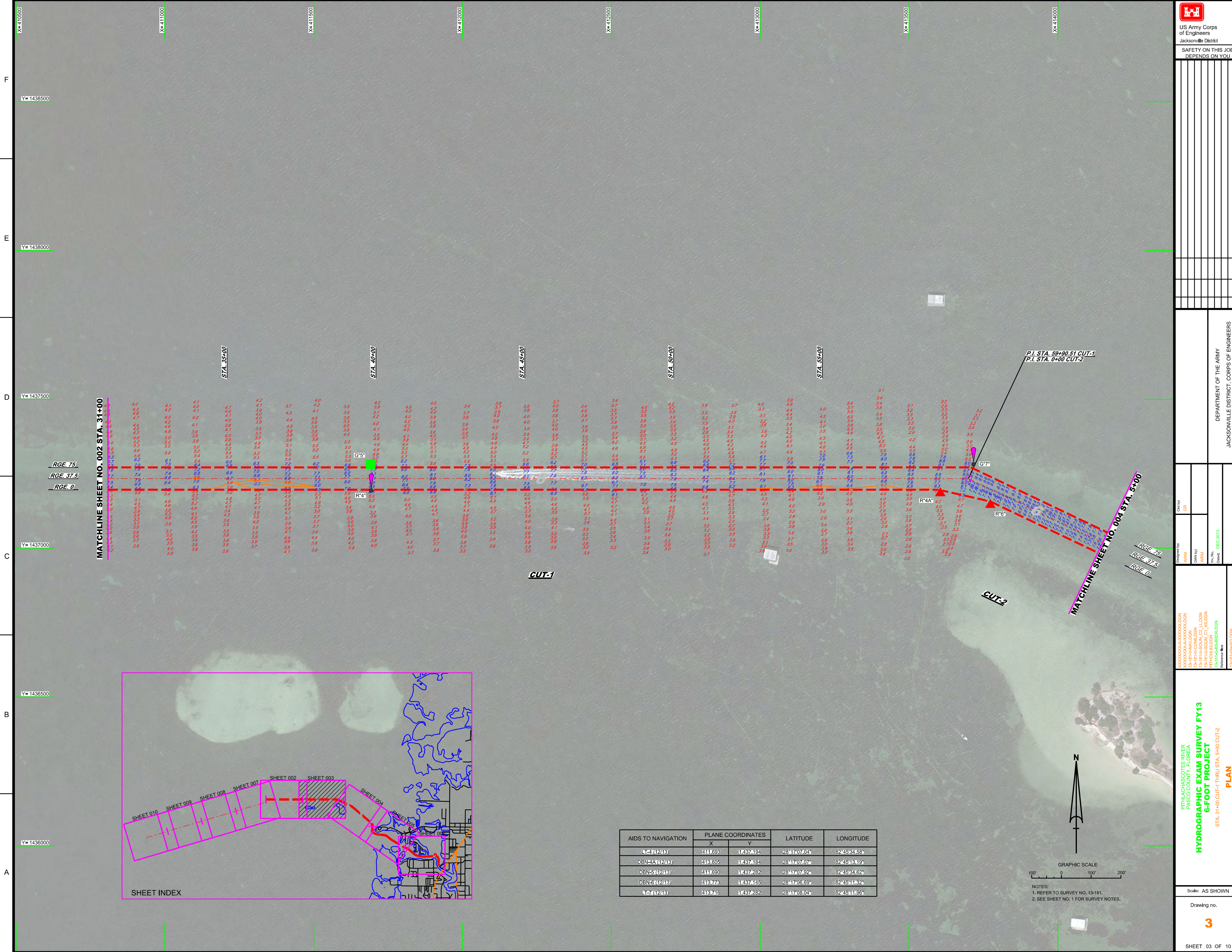
SHEET 03 OF 10



AIDS TO NAVIGATION	PLANE COORDINATES		LATITUDE	LONGITUDE
	X	Y		
L-1 (12/13)	411690	1437194	28°17'07.04"	82°45'34.58"
DBN-A (12/13)	418690	1437194	28°17'07.07"	82°45'18.19"
DBN-S (12/13)	411690	1437282	28°17'07.92"	82°45'24.62"
DBN-S (12/13)	418776	1437435	28°17'06.69"	82°45'14.92"
L-7 (12/13)	418746	1437282	28°17'08.04"	82°45'11.95"



NOTES:
1. REFER TO SURVEY NO. 13-181.
2. SEE SHEET NO. 1 FOR SURVEY NOTES.



MATCHLINE SHEET NO. 002 STA. 31+00

MATCHLINE SHEET NO. 004 STA. 5+00

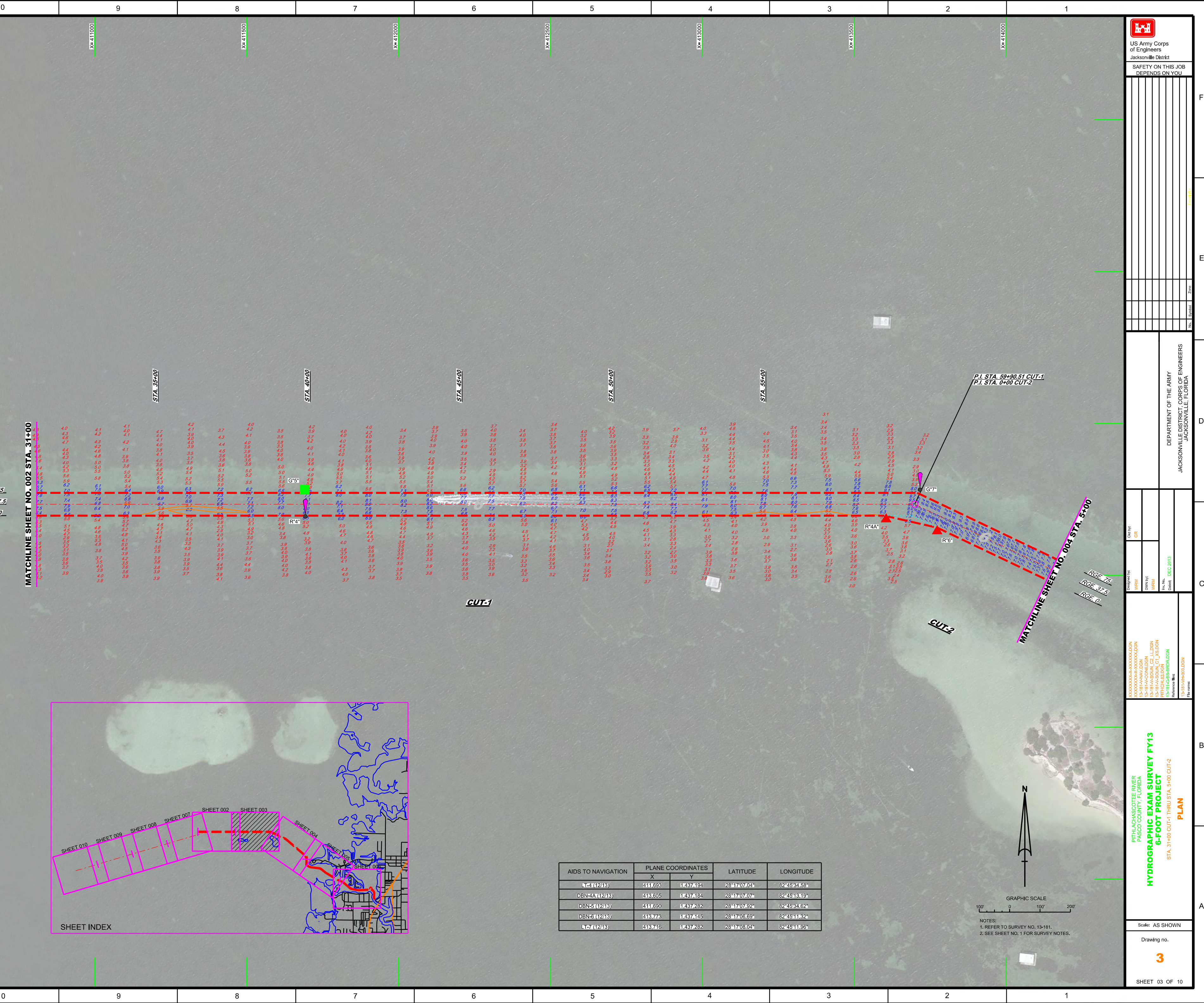
P.I. STA. 59+90.51 CUT-1
P.I. STA. 0+00 CUT-2

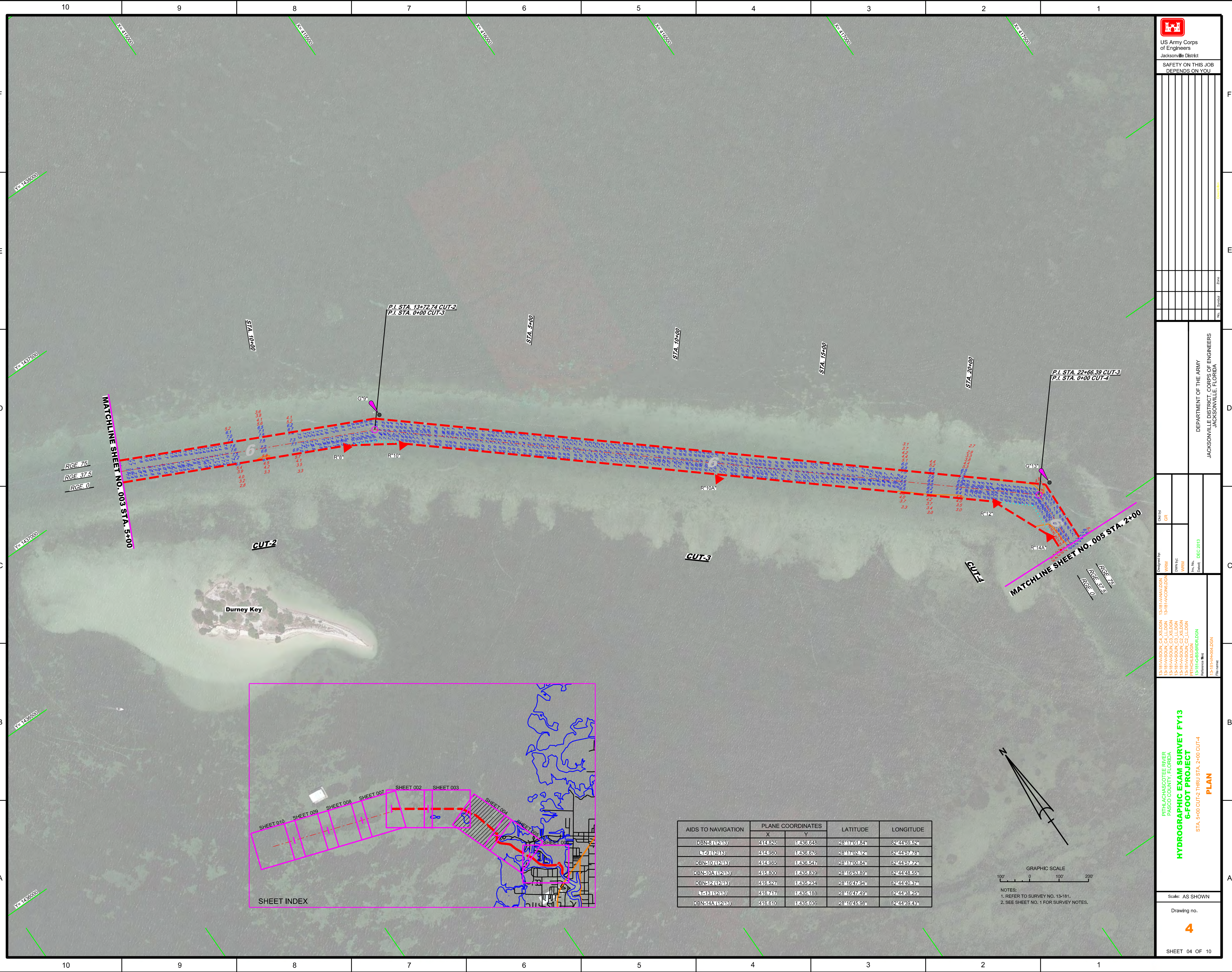
RGE 75
RGE 37.5
RGE 0

RGE 75
RGE 37.5
RGE 0

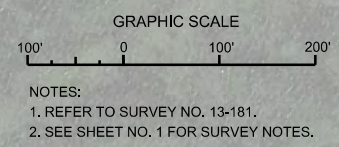
CUT-1

CUT-2





AIDS TO NAVIGATION	PLANE COORDINATES		LATITUDE	LONGITUDE
	X	Y		
DBN-8 (1243)	414.825	1435.648	28°17'01.84"	82°44'59.52"
DBN-9 (1243)	414.980	1435.676	28°17'00.84"	82°44'57.76"
DBN-10 (1243)	414.985	1435.547	28°17'00.84"	82°44'57.72"
DBN-10A (1243)	415.800	1435.839	28°16'53.89"	82°44'48.55"
DBN-12 (1243)	416.527	1435.234	28°16'47.94"	82°44'40.87"
DBN-13 (1243)	416.747	1435.188	28°16'47.49"	82°44'38.25"
DBN-14A (1243)	416.610	1435.036	28°16'45.93"	82°44'39.43"



AIDS TO NAVIGATION	PLANE COORDINATES		LATITUDE	LONGITUDE
	X	Y		
DBN-15 (1243)	416.693	1434.629	28°16'41.96"	82°44'38.48"
LN-16 (1243)	416.585	1434.460	28°16'40.28"	82°44'39.68"
DBN-17 (1243)	416.787	1434.449	28°16'40.19"	82°44'37.41"
DBN-18 (1243)	416.918	1434.286	28°16'38.58"	82°44'35.94"
DBN-20 (1243)	417.690	1434.190	28°16'37.67"	82°44'27.30"
LN-21 (1243)	417.820	1434.269	28°16'38.46"	82°44'25.65"
DBN-22 (1243)	417.842	1434.115	28°16'36.94"	82°44'25.60"
DBN-23 (1243)	418.250	1433.501	28°16'34.85"	82°44'21.02"
DBN-24 (1243)	418.747	1433.505	28°16'30.95"	82°44'15.43"
DBN-25 (1243)	419.305	1433.281	28°16'28.77"	82°44'09.17"

US Army Corps of Engineers
Jacksonville District
SAFETY ON THIS JOB
DEPENDS ON YOU

DEPARTMENT OF THE ARMY
JACKSONVILLE DISTRICT, CORPS OF ENGINEERS
JACKSONVILLE, FLORIDA

Designed by: WRM
Checked by: GRL
Drawn by: WRM
Reviewed by: WRM
Date: DEC 2013

13-18 PASCOON CO LLDGN
13-18 PASCOON CO LLDGN
13-18 PASCOON CO LLDGN
13-18 PASCOON CO LLDGN
13-18 PASCOON CO LLDGN
13-18 PASCOON CO LLDGN
13-18 PASCOON CO LLDGN
13-18 PASCOON CO LLDGN
13-18 PASCOON CO LLDGN
13-18 PASCOON CO LLDGN

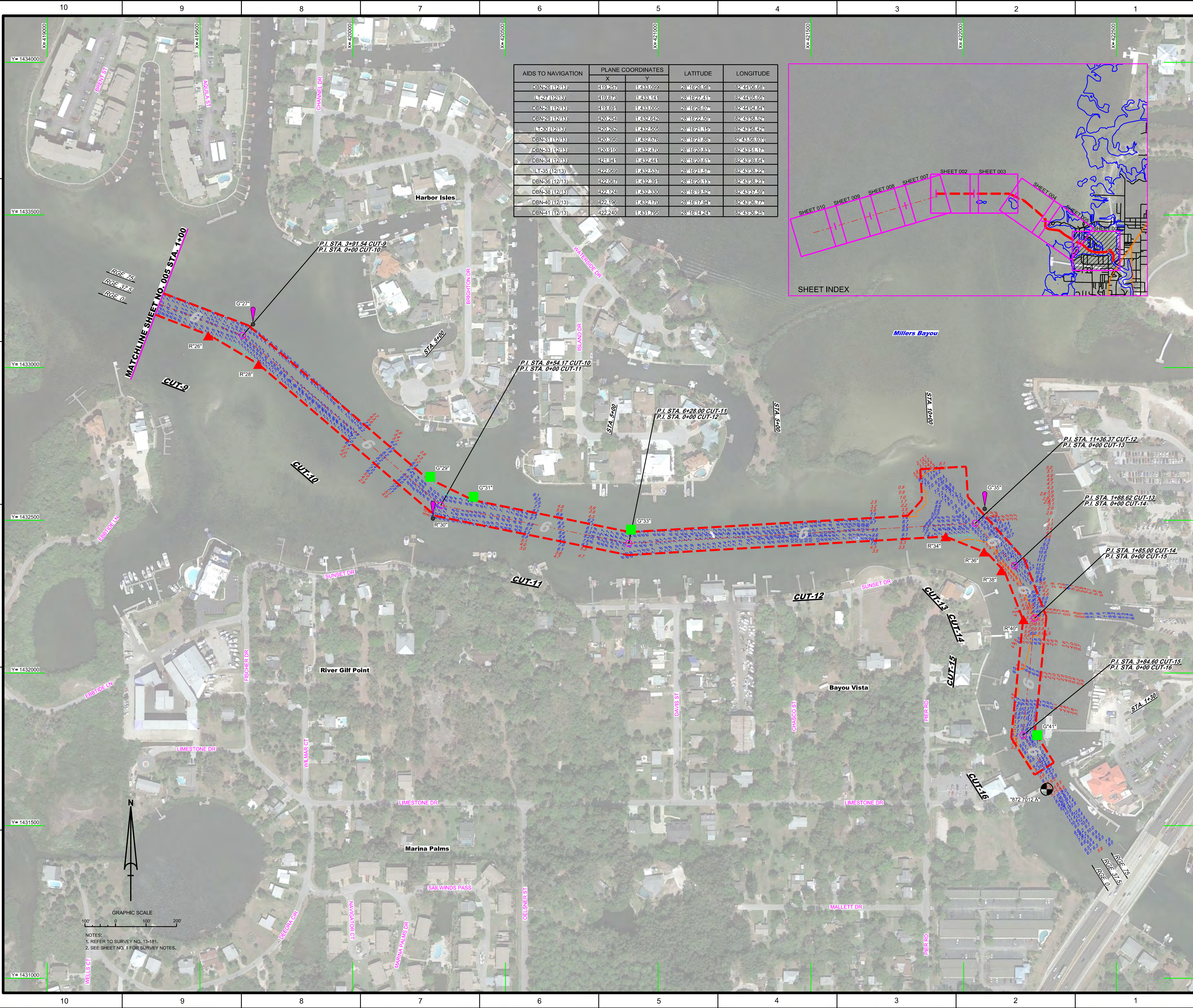
Reference Map: 13-18 HYDROEDGN
File Name:

HYDROGRAPHIC EXAM SURVEY FY13
PASCO COUNTY, FLORIDA
6-FOOT PROJECT
STA. 2+00 CUT-4 THRU STA. 1+00 CUT-9
PLAN

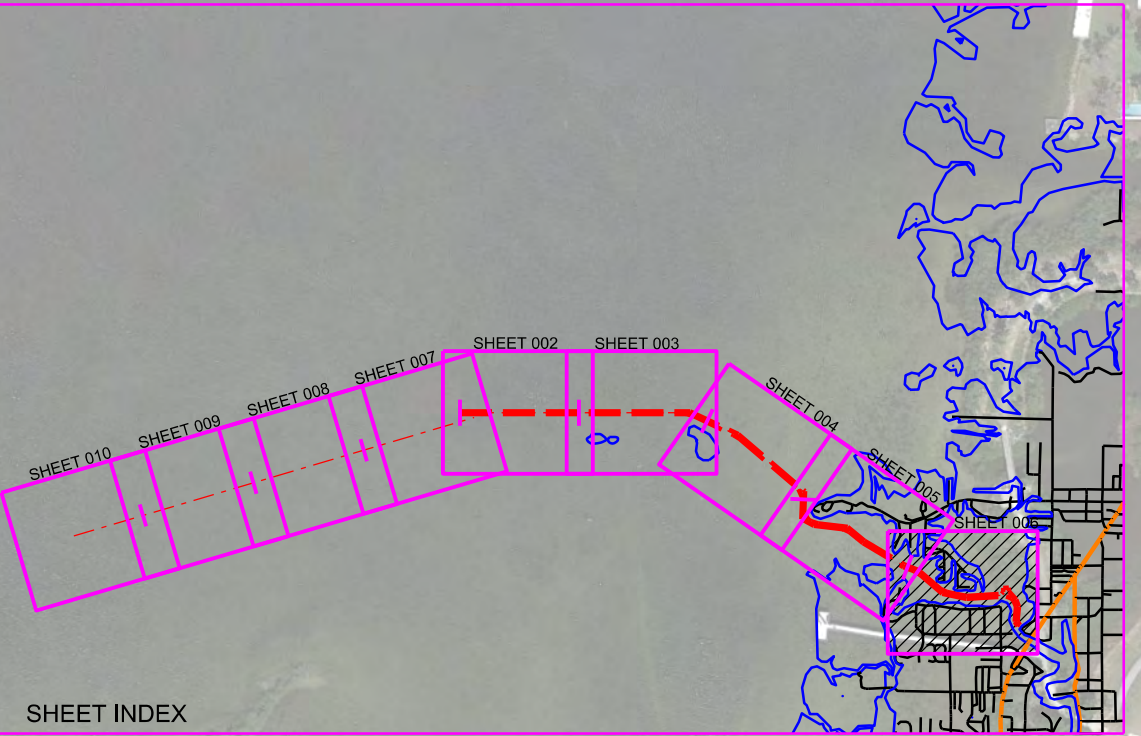
Scale: AS SHOWN
Drawing no. **5**
SHEET 05 OF 06



NOTES:
1. REFER TO SURVEY NO. 13-181.
2. SEE SHEET NO. 1 FOR SURVEY NOTES.



AIDS TO NAVIGATION	PLANE COORDINATES		LATITUDE	LONGITUDE
	X	Y		
DBN-26 (12/13)	419,257	1433,099	28°16'26.88"	82°44'06.88"
LT-27 (12/13)	419,678	1433,741	28°16'27.51"	82°44'05.05"
DBN-28 (12/13)	419,691	1433,005	28°16'26.07"	82°44'04.84"
DBN-29 (12/13)	420,254	1432,642	28°16'22.50"	82°43'58.52"
LT-30 (12/13)	420,768	1432,505	28°16'21.15"	82°43'58.42"
DBN-31 (12/13)	420,896	1432,576	28°16'21.86"	82°43'58.93"
DBN-33 (12/13)	420,910	1432,270	28°16'20.83"	82°43'51.74"
DBN-34 (12/13)	421,941	1432,241	28°16'20.51"	82°43'49.64"
LT-35 (12/13)	422,089	1432,537	28°16'21.57"	82°43'58.22"
DBN-36 (12/13)	422,067	1432,491	28°16'20.18"	82°43'58.23"
DBN-38 (12/13)	422,124	1432,830	28°16'19.52"	82°43'57.59"
DBN-40 (12/13)	422,196	1432,170	28°16'17.94"	82°43'56.77"
DBN-41 (12/13)	422,240	1431,795	28°16'14.24"	82°43'56.25"



US Army Corps of Engineers
Jacksonville District

SAFETY ON THIS JOB
DEPENDS ON YOU

Checked by:	GRL	Designed by:	VPM	Drawn by:	VPM
13-18 IN-HOUSE, CUT, LILLOON	13-18 IN-HOUSE, CUT, LILLOON	13-18 IN-HOUSE, CUT, LILLOON	13-18 IN-HOUSE, CUT, LILLOON	13-18 IN-HOUSE, CUT, LILLOON	13-18 IN-HOUSE, CUT, LILLOON
13-18 IN-HOUSE, CUT, LILLOON	13-18 IN-HOUSE, CUT, LILLOON	13-18 IN-HOUSE, CUT, LILLOON	13-18 IN-HOUSE, CUT, LILLOON	13-18 IN-HOUSE, CUT, LILLOON	13-18 IN-HOUSE, CUT, LILLOON
13-18 IN-HOUSE, CUT, LILLOON	13-18 IN-HOUSE, CUT, LILLOON	13-18 IN-HOUSE, CUT, LILLOON	13-18 IN-HOUSE, CUT, LILLOON	13-18 IN-HOUSE, CUT, LILLOON	13-18 IN-HOUSE, CUT, LILLOON
13-18 IN-HOUSE, CUT, LILLOON	13-18 IN-HOUSE, CUT, LILLOON	13-18 IN-HOUSE, CUT, LILLOON	13-18 IN-HOUSE, CUT, LILLOON	13-18 IN-HOUSE, CUT, LILLOON	13-18 IN-HOUSE, CUT, LILLOON
13-18 IN-HOUSE, CUT, LILLOON	13-18 IN-HOUSE, CUT, LILLOON	13-18 IN-HOUSE, CUT, LILLOON	13-18 IN-HOUSE, CUT, LILLOON	13-18 IN-HOUSE, CUT, LILLOON	13-18 IN-HOUSE, CUT, LILLOON

Reference files:
13-18 IN-HOUSE

HYDROGRAPHIC EXAM SURVEY FY13

6-FOOT PROJECT

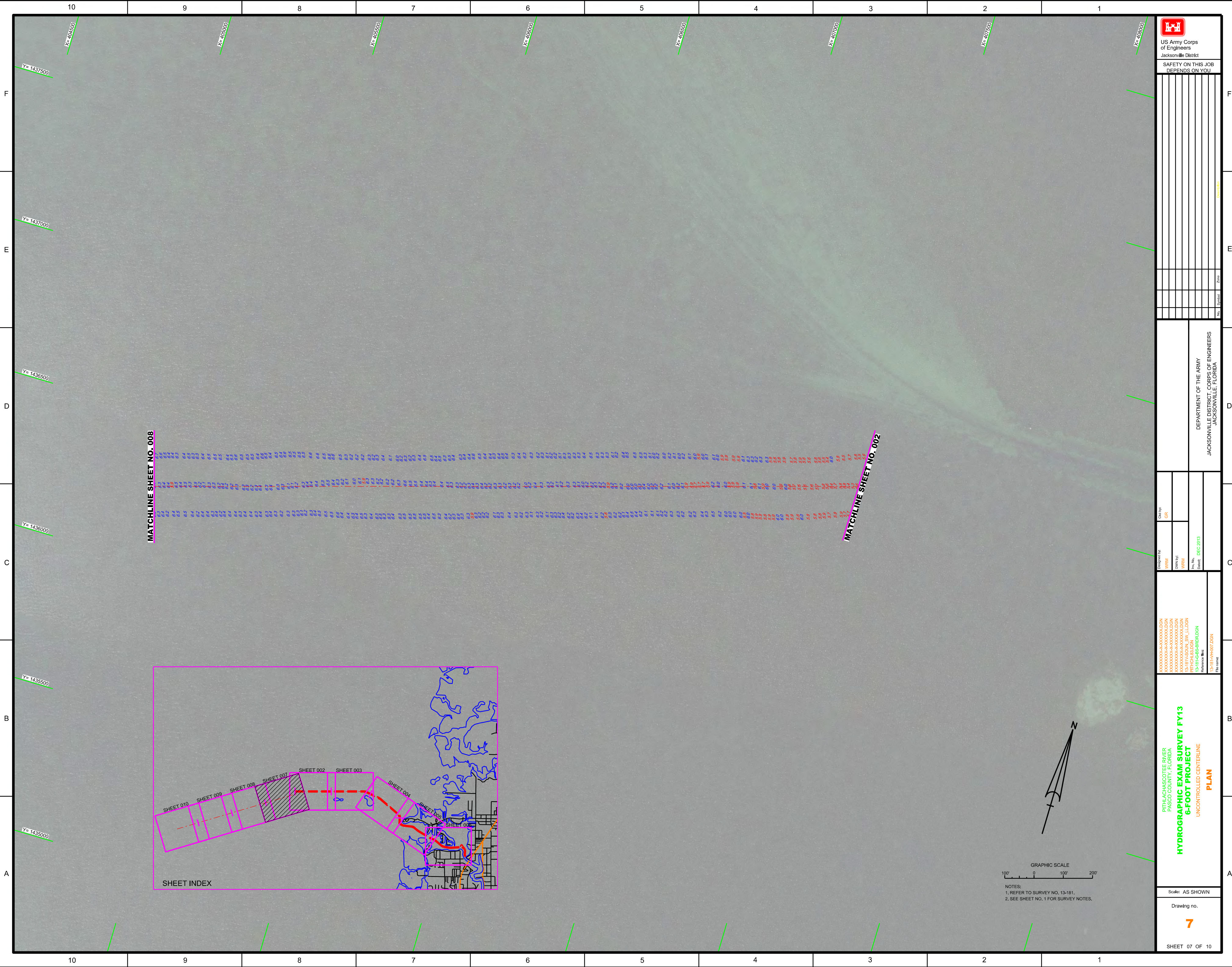
STA. 1+00 CUT-9 THRU STA. 1+30 CUT-16

PLAN

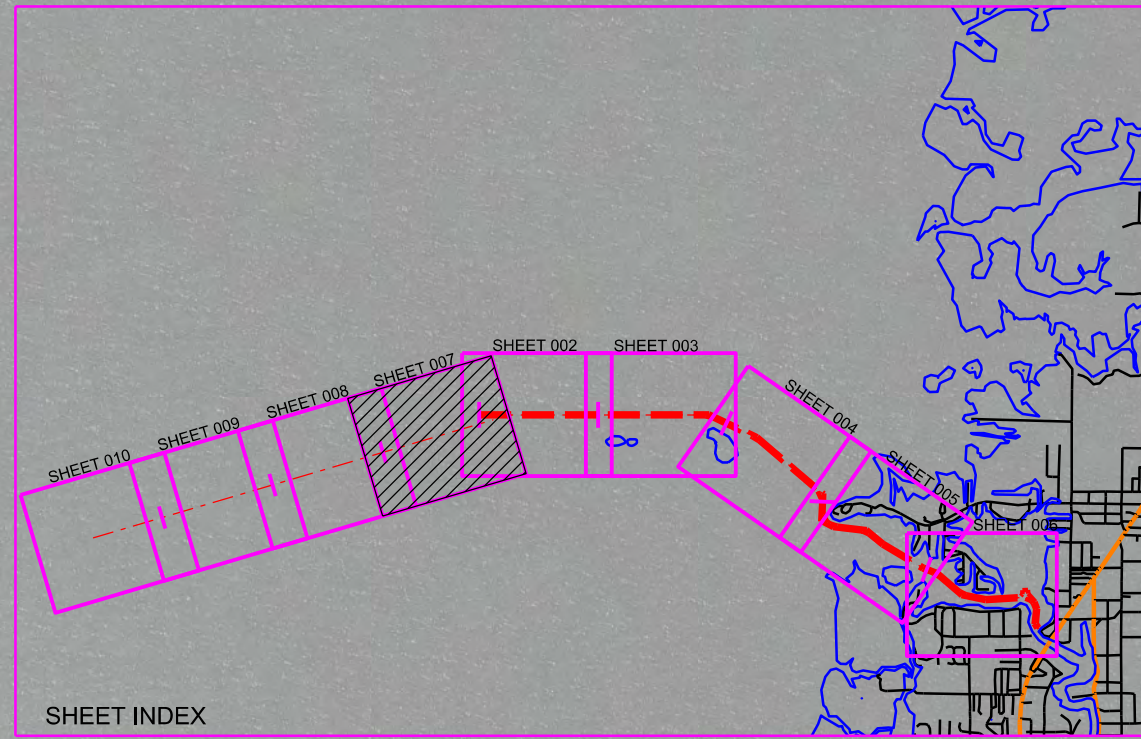
Scale: AS SHOWN

Drawing no.
6

SHEET 06 OF 10



MATCHLINE SHEET NO. 008



SHEET INDEX

MATCHLINE SHEET NO. 002



US Army Corps of Engineers
Jacksonville District

SAFETY ON THIS JOB
DEPENDS ON YOU

No.	Symbol	Name	Zone

DEPARTMENT OF THE ARMY
JACKSONVILLE DISTRICT, CORPS OF ENGINEERS
JACKSONVILLE, FLORIDA

Drawn by:

GR

Designed by:

WRM

DWN:PE

WRM

File No.

DEC 2013

Check:

WRM

Reference files:

13-18-EG-BS-RR1A.DGN

13-18-EG-RR1B.DGN

13-18-EG-RR1C.DGN

13-18-EG-RR1D.DGN

13-18-EG-RR1E.DGN

13-18-EG-RR1F.DGN

13-18-EG-RR1G.DGN

13-18-EG-RR1H.DGN

13-18-EG-RR1I.DGN

13-18-EG-RR1J.DGN

13-18-EG-RR1K.DGN

13-18-EG-RR1L.DGN

13-18-EG-RR1M.DGN

13-18-EG-RR1N.DGN

13-18-EG-RR1O.DGN

13-18-EG-RR1P.DGN

13-18-EG-RR1Q.DGN

13-18-EG-RR1R.DGN

13-18-EG-RR1S.DGN

13-18-EG-RR1T.DGN

13-18-EG-RR1U.DGN

13-18-EG-RR1V.DGN

13-18-EG-RR1W.DGN

13-18-EG-RR1X.DGN

13-18-EG-RR1Y.DGN

13-18-EG-RR1Z.DGN

13-18-EG-RR2A.DGN

13-18-EG-RR2B.DGN

13-18-EG-RR2C.DGN

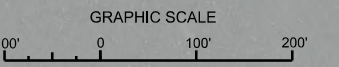
13-18-EG-RR2D.DGN

13-18-EG-RR2E.DGN

13-18-EG-RR2F.DGN

13-18-EG-RR2G.DGN

13-18-EG-RR2H.DGN



NOTES:
1. REFER TO SURVEY NO. 13-181.
2. SEE SHEET NO. 1 FOR SURVEY NOTES.

Pt MACHASCO TEE RIVER
PASCO COUNTY, FLORIDA
HYDROGRAPHIC EXAM SURVEY FY13
UNCONTROLLED CENTERLINE
PLAN

Scale: AS SHOWN

Drawing no.

7

SHEET 07 OF 10

