

# NAPLES TO GORDON PASS COLLIER COUNTY, FLORIDA EXAMINATION SURVEY FY13 8, 10 AND 12-FOOT PROJECT

### SURVEY NOTES

- REFER TO SURVEY NO. 13-173.
  - DEPTHS DEPICTED BY THIS SURVEY ARE REFERENCED TO MLLW, TIDAL EPOCH 1983-2001 AS REPORTED BY THE NATIONAL OCEANIC AND ATMOSPHERIC ADMINISTRATION (NOAA). NOAA'S DATUM MODEL WAS USED AND CALIBRATED TO THE PUBLISHED MLLW HEIGHTS OF THE BENCHMARKS ASSOCIATED WITH THE TIDE GAGE SITES SPECIFIED BELOW:  
NOAA TIDAL STATION 872-5110, NAPLES, FL USED FOR ALL CUTS.
  - TIDAL REDUCTIONS WERE OBTAINED UTILIZING A REAL-TIME KINEMATIC (RTK) GPS AND REFERENCED TO MLLW UTILIZING A HYPACK KINEMATIC TIDE DATUM (KTD) MODEL. KTD FILE NAME IS: "NAPLES-GP-14SEP2010.KTD".
  - ALL ELEVATIONS ARE BELOW THE CHART DATUM UNLESS PRECEDED BY A (+) SIGN.
  - PLANE COORDINATES ARE BASED ON THE TRANSVERSE MERCATOR PROJECTION FOR THE EAST ZONE (0901) OF FLORIDA AND REFERENCED TO NORTH AMERICAN DATUM OF 1983 (NAD83).
  - ALL AZIMUTHS ARE GRID; RECKONED CLOCKWISE FROM SOUTH.
  - ALL STATIONING REFERS TO THE CENTERLINE OF THE CHANNEL.
  - THIS SURVEY WAS PERFORMED USING REAL-TIME KINEMATIC GPS POSITIONING WITH THE FOLLOWING REFERENCE BASE LOCATION:  
REFERENCE BASE LOCATED AT "S-717" (OPUS PID# BBCCG2)  
TIDE STAFF LOCATED FROM "S-717" (NGS PID# DM5194)
  - VERTICAL MEASUREMENTS WERE MADE USING A ROSS MODEL 835 SMARTSOUNDER USING A 2000 KHZ DUAL-FREQUENCY SINGLE-BEAM TRANSDUCER. SOUNDINGS FOR CUTS 1 THRU 7 ARE SHOWN IN HIGH FREQUENCY AND LOW FREQUENCY FOR CUTS 8 THRU 15 AND THE MUNICIPAL YACHT TURNING BASIN.
- | VESSEL | DATE OF SURVEY     | CUT                                  |
|--------|--------------------|--------------------------------------|
| WS-34  | 05-08, 13 NOV 2013 | CUTS 1 THRU 15, MUNICIPAL YACHT T.B. |
- AIDS TO NAVIGATION WERE LOCATED DURING THIS SURVEY.
  - THE INFORMATION DEPICTED ON THIS MAP REPRESENTS THE RESULTS OF SURVEYS MADE ON THE DATES INDICATED ABOVE AND CAN ONLY BE CONSIDERED AS INDICATING THE GENERAL CONDITIONS AT THAT TIME. THIS CHART IS SOLELY FOR THE DISTRIBUTION OF AVAILABLE DEPTHS AT THE TIME OF THE SURVEY AND IS NOT TO BE USED FOR NAVIGATION.
  - SURVEY ACCURACY PERFORMANCE STANDARDS, QUALITY CONTROL, AND QUALITY ASSURANCE REQUIREMENTS WERE FOLLOWED DURING THIS SURVEY IN ACCORDANCE WITH USACE EM 1110-2-1003, HYDROGRAPHIC SURVEYING, 1 JAN 02.

LEGEND	
	MONUMENT
	LIGHTED BEACON
	GREEN DAY BEACON
	RED DAY BEACON
	RED LIGHTED BUOY
	GREEN LIGHTED BUOY
	CAN BUOY
	NUN BUOY
	TIDE STAFF
	PROJECT DEPTH

US Army Corps of Engineers  
Jacksonville District  
SAFETY ON THIS JOB  
DEPENDS ON YOU

DEPARTMENT OF THE ARMY  
JACKSONVILLE DISTRICT, CORPS OF ENGINEERS  
JACKSONVILLE, FLORIDA

EXAMINATION SURVEY FY13  
8, 10 & 12-FOOT PROJECT  
INDEX, LOCATION AND VICINITY  
MAP

Scale: AS SHOWN  
Drawing no. 1  
SHEET 01 OF 08





US Army Corps of Engineers  
Jacksonville District

SAFETY ON THIS JOB  
DEPENDS ON YOU

DEPARTMENT OF THE ARMY  
JACKSONVILLE DISTRICT, CORPS OF ENGINEERS  
JACKSONVILLE, FLORIDA

Checked by: DWT  
Designed by: WRM  
Drawn by: WRM  
Title: EXAMINATION SURVEY FY13  
Scale: AS SHOWN  
Date: 03/11/13  
Project: MAPLES TO GORSON PASS  
COLLER COUNTY, FLORIDA  
EXAMINATION SURVEY FY13  
8, 10 & 12-FOOT PROJECT  
STA. 0+00 THRU STA. 30+00 CUT-1  
PLAN

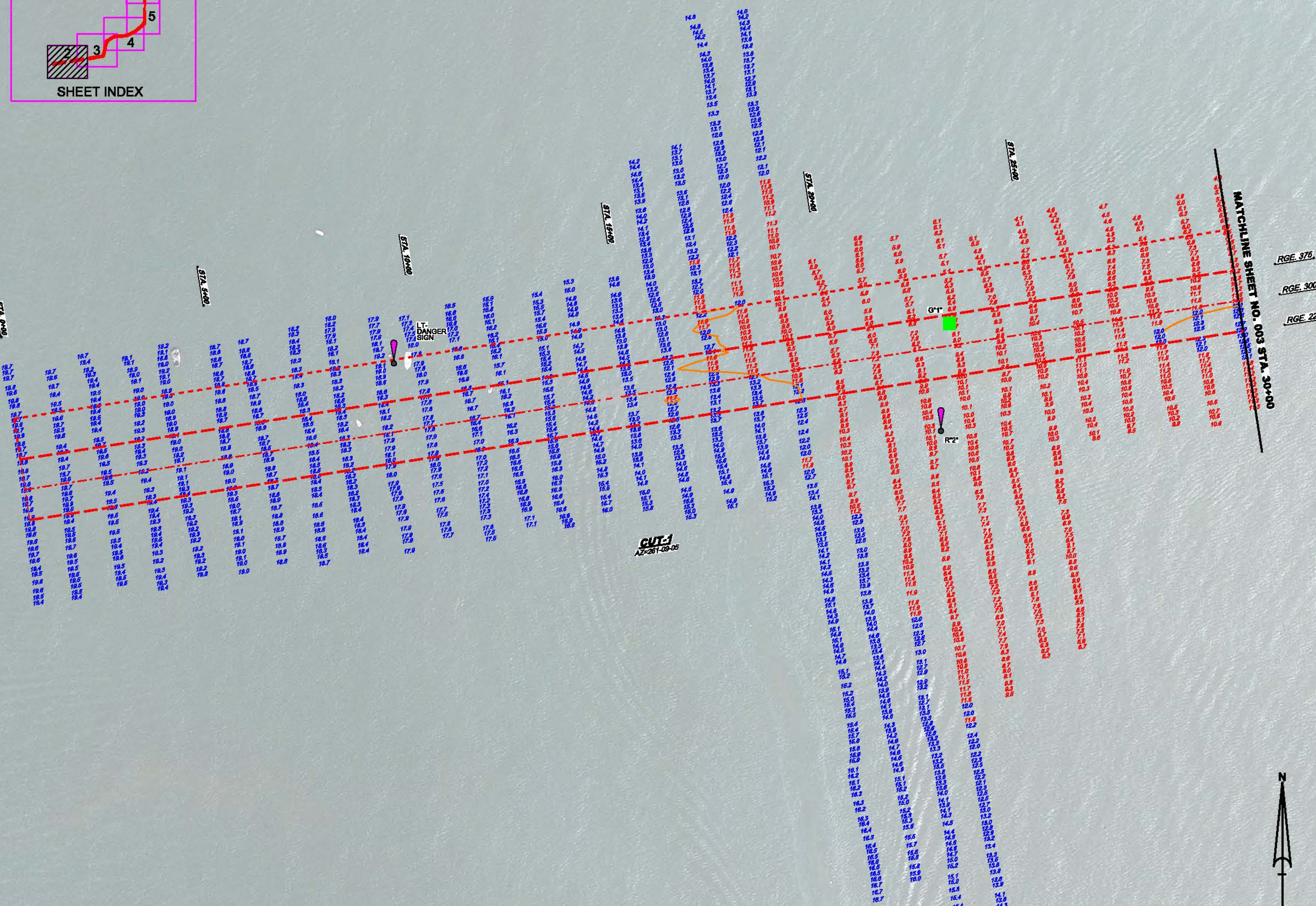
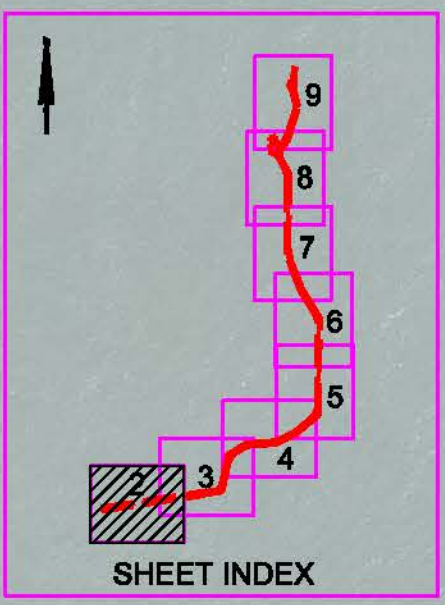
Maples to Gorson Pass  
Coller County, Florida  
Examination Survey FY13  
8, 10 & 12-Foot Project  
Sta. 0+00 thru Sta. 30+00 Cut-1  
Plan

Scale: AS SHOWN

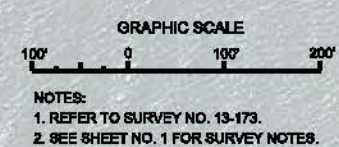
Drawing no.

2

SHEET 02 OF 08



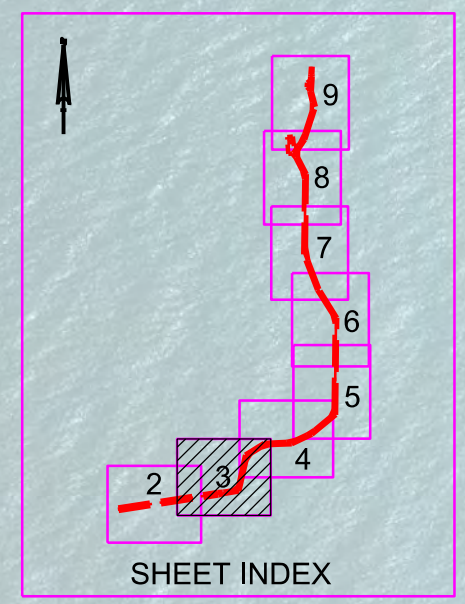
AIDS TO NAVIGATION	PLANE COORDINATES		LATITUDE	LONGITUDE
	X	Y		
DBN-1 (11/13)	391,207	639,834	26°05'30.05"	81°48'26.30"
LT-2 (11/13)	391,186	639,671	26°06'27.45"	81°48'26.51"
LT/SIGN (11/13)	389,848	636,736	26°05'28.00"	81°48'41.18"



NOTES:  
1. REFER TO SURVEY NO. 13-173.  
2. SEE SHEET NO. 1 FOR SURVEY NOTES.

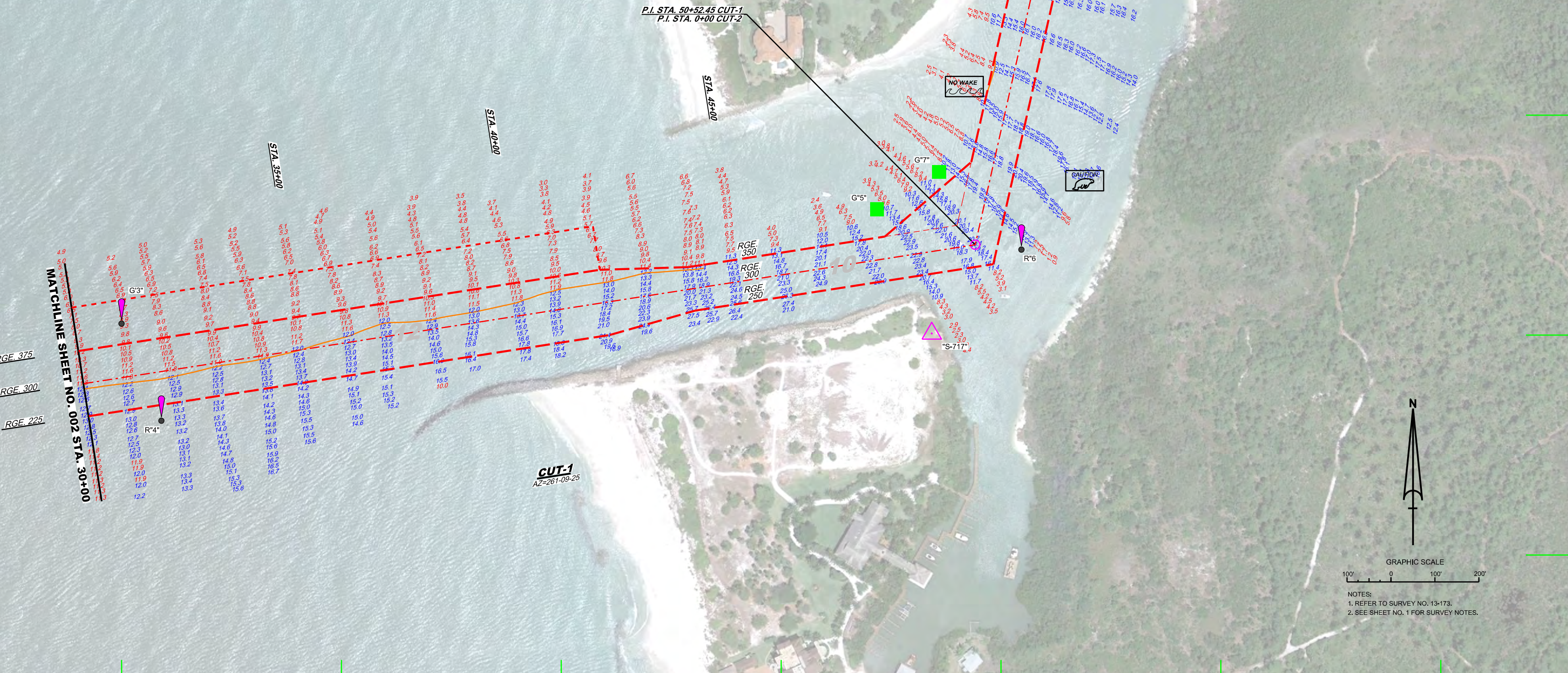



AIDS TO NAVIGATION	PLANE COORDINATES		LATITUDE	LONGITUDE
	X	Y		
LT-3 (11/13)	391,999	640,026	26°05'32.00"	81°48'17.62"
LT-4 (11/13)	392,090	639,805	26°05'29.82"	81°48'16.61"
DBN-5 (11/13)	393,717	640,286	26°05'34.68"	81°47'58.79"
LT-6 (11/13)	394,046	640,194	26°05'33.79"	81°47'55.18"
DBN-7 (11/13)	393,858	640,370	26°05'35.52"	81°47'57.25"
DBN-8 (11/13)	394,300	641,241	26°05'44.18"	81°47'52.47"
LT-9 (11/13)	394,143	641,644	26°05'48.16"	81°47'54.22"
DBN-10 (11/13)	394,478	641,632	26°05'48.06"	81°47'50.54"
SIGN (11/13)	393,916	640,564	26°05'37.45"	81°47'56.63"
SIGN (11/13)	394,566	641,645	26°05'48.20"	81°47'49.58"
SIGN (11/13)	394,190	640,350	26°05'35.35"	81°47'53.61"



MATCHLINE SHEET NO. 002 STA. 30+00

MATCHLINE SHEET NO. 004 STA. 3+00





US Army Corps of Engineers  
Jacksonville District

SAFETY ON THIS JOB  
DEPENDS ON YOU

---

DEPARTMENT OF THE ARMY  
JACKSONVILLE DISTRICT, CORPS OF ENGINEERS  
JACKSONVILLE, FLORIDA

---

Checked By: DVT  
Designed By: WRM  
Drawn By: WRM  
File No.: W822P-000-0000  
Job No.: DD MAM YYYY

---

13-173A-CON16.DGN  
13-173A-CON12.DGN  
13-173A-SOUC-3-HF.DGN  
13-173A-SOUC-2-HF.DGN  
AKP2483\_VANTERRASOLUTION.WSLODGN  
13-173A-SIS.DGN

---

Reference Map: 13-173A-H00LDGN

---

NAPLES TO GORBON PASS  
COLLIER COUNTY, FLORIDA  
**EXAMINATION SURVEY FY13  
8, 10 & 12-FOOT PROJECT**  
STA. 30+00 CUT-3 THRU STA. 3+00 CUT-3  
**PLAN**

---

Scale: AS SHOWN

---

Drawing no.  
**3**

---

SHEET 03 OF 09



US Army Corps of Engineers  
Jacksonville District

SAFETY ON THIS JOB  
DEPENDS ON YOU

Checked by	DVT
Drawn by	WPM
Checked by	WPM
Drawn by	WPM
Checked by	WPM
Drawn by	WPM

DEPARTMENT OF THE ARMY  
JACKSONVILLE DISTRICT, CORPS OF ENGINEERS  
JACKSONVILLE, FLORIDA

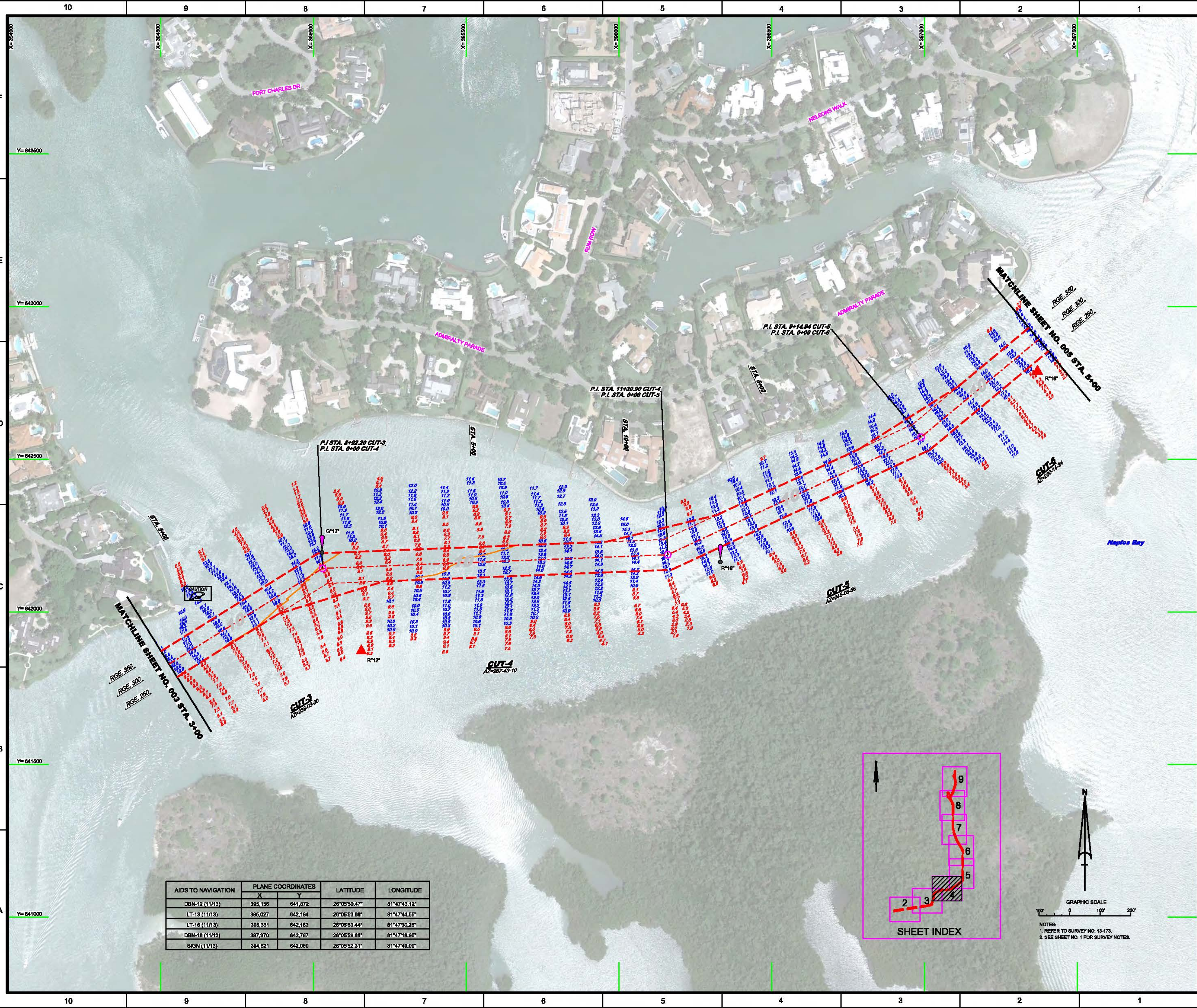
13-173-3-CONTR.DGN  
13-173-3-AM.DGN  
13-173-3-APP.DGN  
13-173-3-BAKUP.DGN  
13-173-3-BAKUP.DGN  
13-173-3-BAKUP.DGN  
13-173-3-BAKUP.DGN  
13-173-3-BAKUP.DGN  
13-173-3-BAKUP.DGN

EXAMINATION SURVEY FY13  
8, 10 & 12-FOOT PROJECT  
STA. 9+00 CUT-3 THRU STA. 6+00 CUT-6  
PLAN

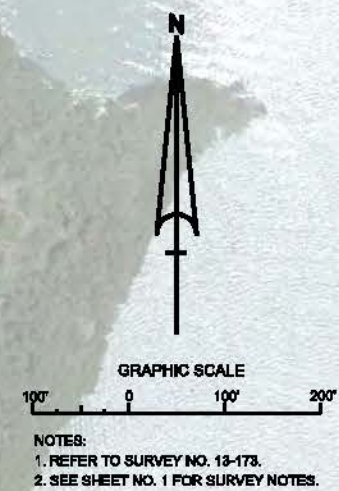
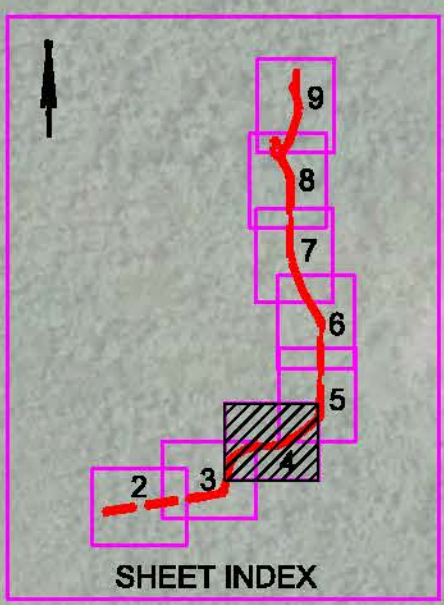
Scale: AS SHOWN

Drawing no.  
**4**

SHEET 04 OF 08



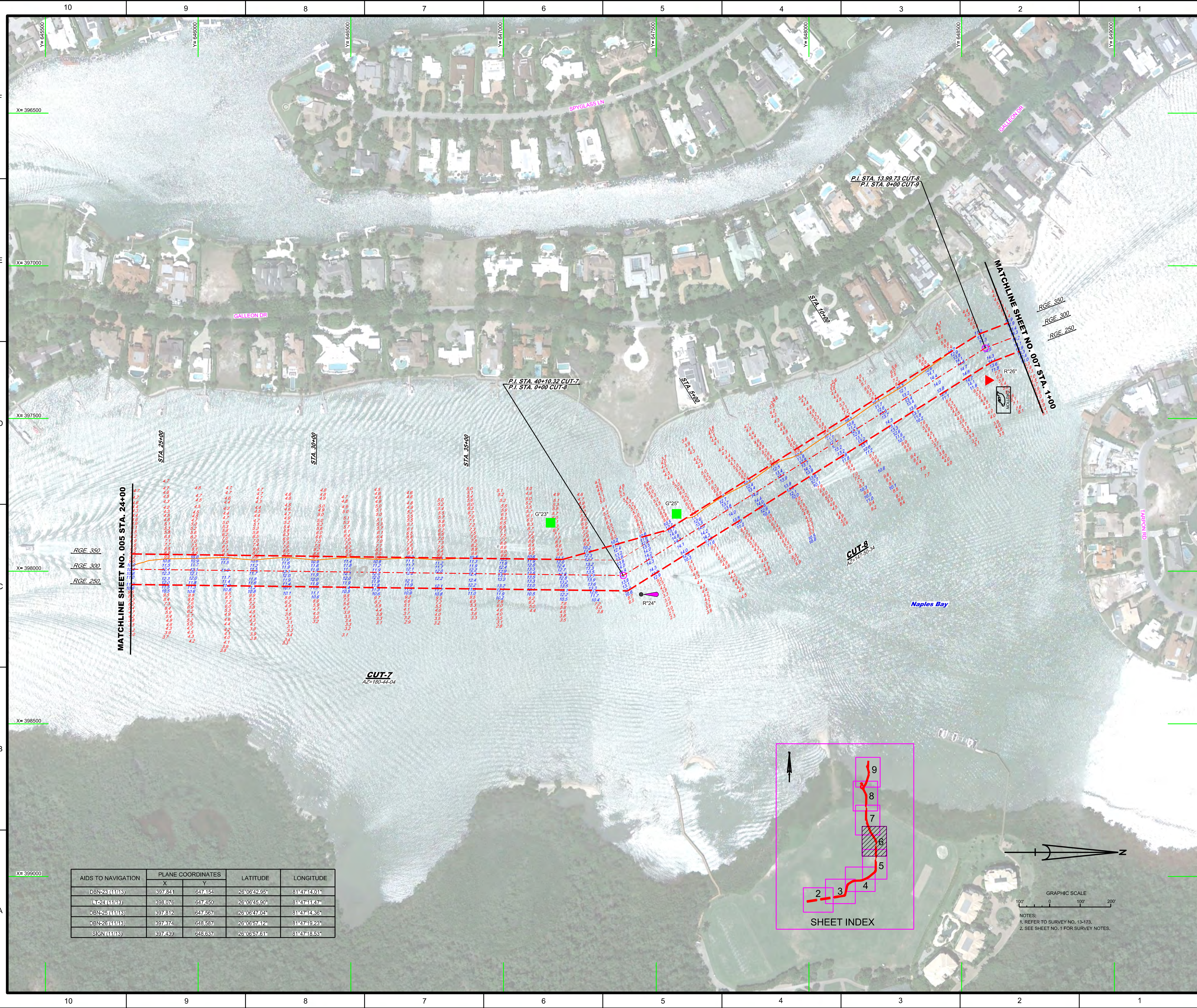
AIDS TO NAVIGATION	PLANE COORDINATES		LATITUDE	LONGITUDE
	X	Y		
DBN-12 (11/13)	385,156	641,872	28°05'50.47"	81°47'43.12"
LT-13 (11/13)	386,027	642,194	28°06'53.66"	81°47'44.56"
LT-16 (11/13)	386,331	642,163	28°06'53.44"	81°47'30.25"
DBN-18 (11/13)	387,370	642,787	28°06'58.88"	81°47'18.90"
SIGN (11/13)	384,621	642,060	28°06'52.31"	81°47'49.00"



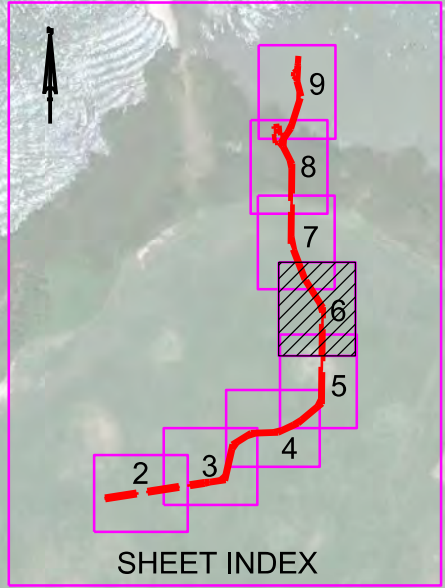








AIDS TO NAVIGATION	PLANE COORDINATES		LATITUDE	LONGITUDE
	X	Y		
DBN-23 (11/13)	397,841	647,154	26°06'42.95"	81°47'14.01"
LT-24 (11/13)	398,076	647,450	26°06'45.90"	81°47'11.47"
DBN-25 (11/13)	397,812	647,567	26°06'47.04"	81°47'14.36"
DBN-26 (11/13)	397,374	648,587	26°06'57.12"	81°47'19.23"
SIGN (11/13)	397,439	648,637	26°06'57.61"	81°47'18.53"

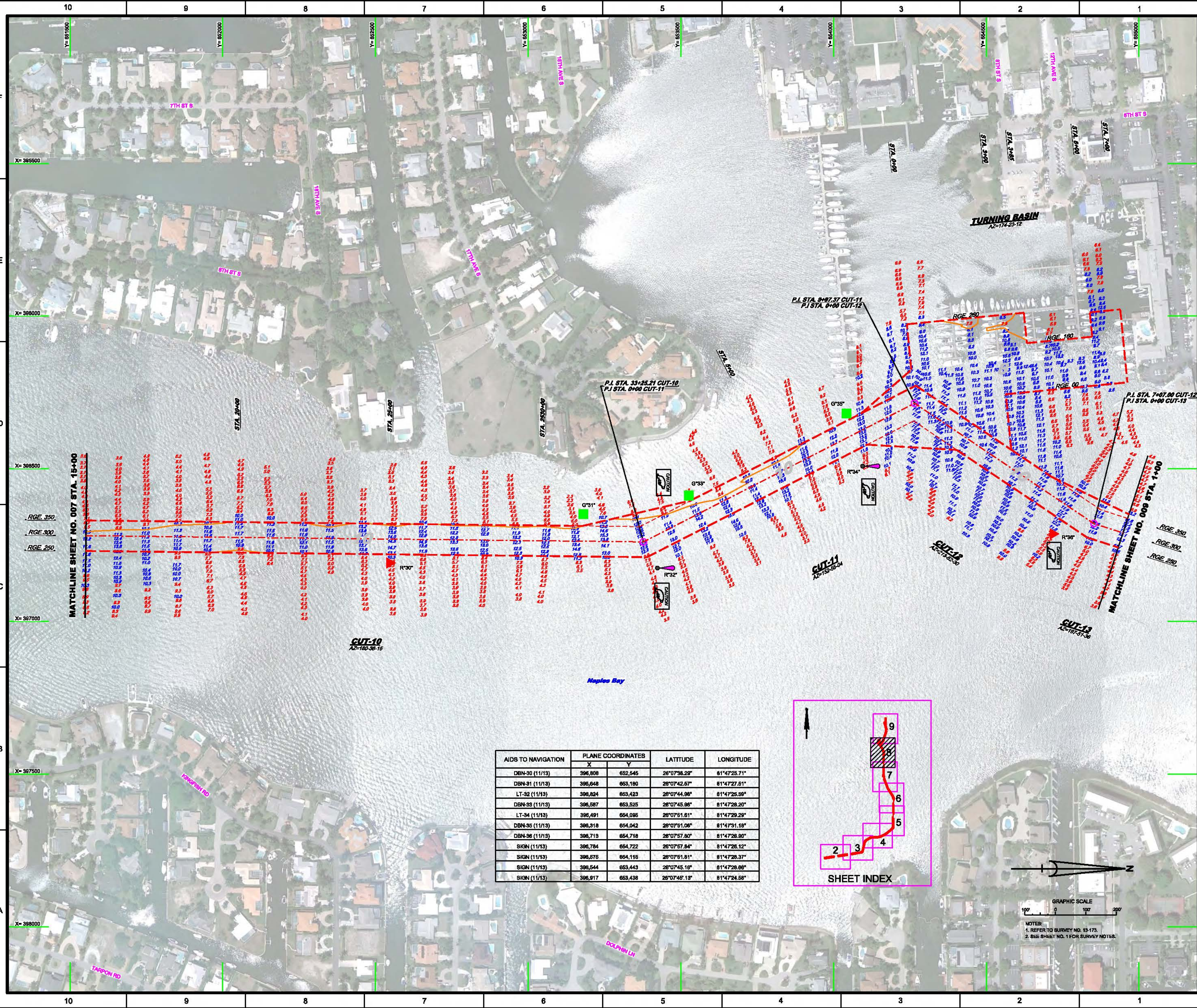


GRAPHIC SCALE  
 1" = 100'  
 0 100' 200'  
 NOTES:  
 1. REFER TO SURVEY NO. 13-173.  
 2. SEE SHEET NO. 1 FOR SURVEY NOTES.

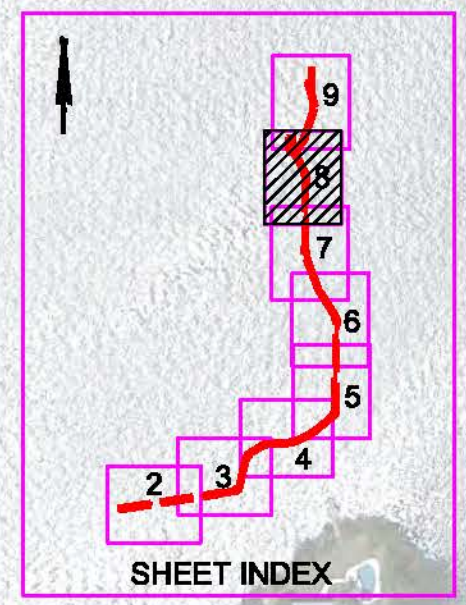






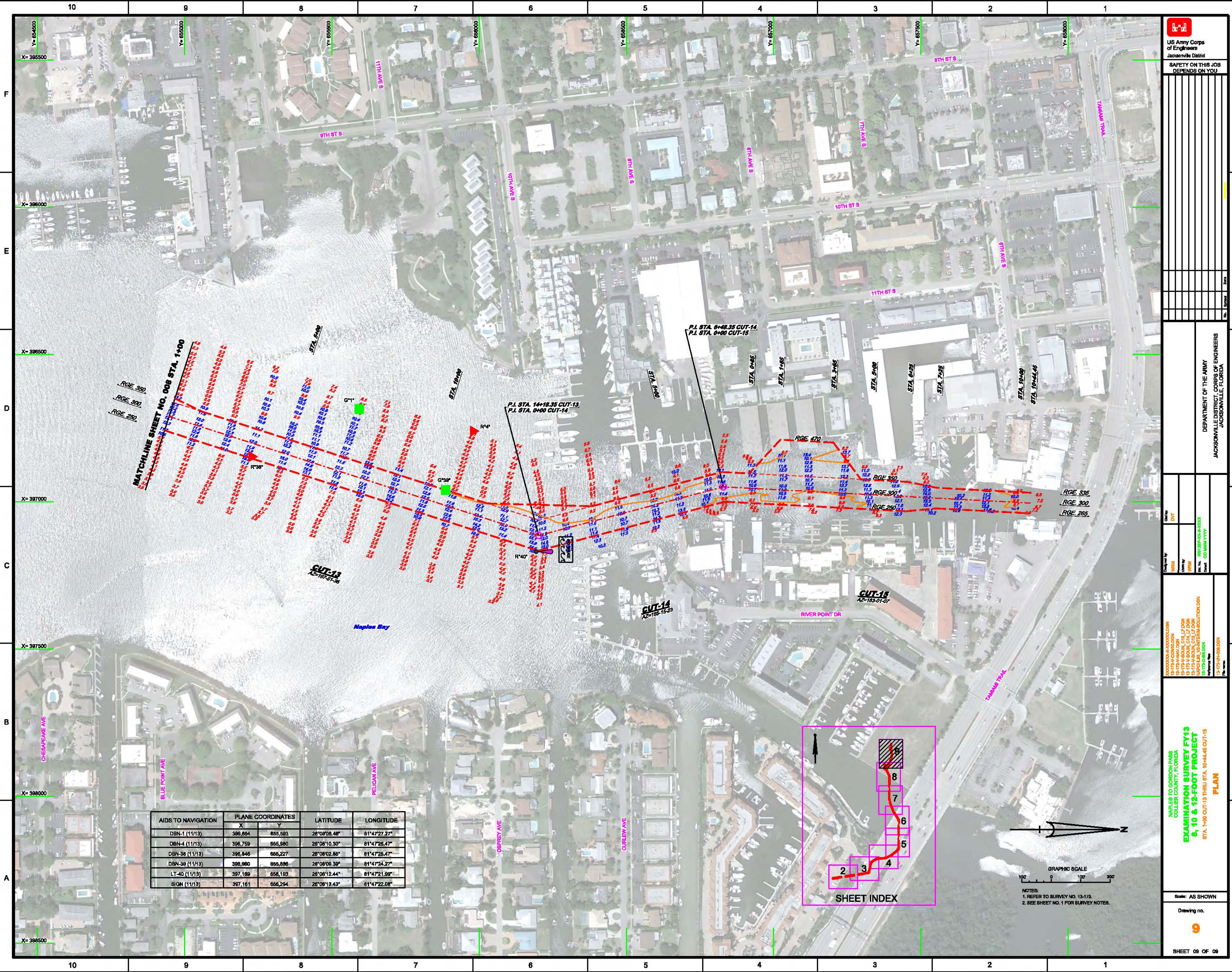


AIDS TO NAVIGATION	PLANE COORDINATES		LATITUDE	LONGITUDE
	X	Y		
DBN-30 (11/13)	396,808	852,545	26°07'38.23"	81°47'25.71"
DBN-31 (11/13)	396,848	853,180	26°07'42.67"	81°47'27.61"
LT-32 (11/13)	396,824	853,423	26°07'44.98"	81°47'25.69"
DBN-33 (11/13)	396,587	853,525	26°07'45.98"	81°47'28.20"
LT-34 (11/13)	396,491	854,085	26°07'51.61"	81°47'29.29"
DBN-35 (11/13)	396,318	854,042	26°07'51.06"	81°47'31.18"
DBN-36 (11/13)	396,713	854,718	26°07'57.80"	81°47'28.90"
SIGN (11/13)	396,784	854,722	26°07'57.84"	81°47'28.12"
SIGN (11/13)	396,575	854,116	26°07'51.81"	81°47'28.37"
SIGN (11/13)	396,544	853,443	26°07'45.19"	81°47'28.99"
SIGN (11/13)	396,917	853,436	26°07'45.18"	81°47'24.68"



GRAPHIC SCALE  
 100' 0 100 200'  
 NOTES:  
 1. REFER TO SURVEY NO. 13-173.  
 2. SEE SHEET NO. 1 FOR SURVEY NOTES.





10 9 8 7 6 5 4 3 2 1

F E D C B A

AIDS TO NAVIGATION	PLANE COORDINATES		LATITUDE	LONGITUDE
	X	Y		
DBN-1 (11/13)	396,884	655,593	26°08'08.46"	81°47'27.27"
DBN-4 (11/13)	396,759	655,590	26°08'10.30"	81°47'26.47"
DBN-38 (11/13)	396,846	656,227	26°08'02.85"	81°47'25.47"
DBN-39 (11/13)	396,980	655,896	26°08'06.39"	81°47'24.27"
LT-40 (11/13)	397,189	656,193	26°08'12.44"	81°47'21.99"
SIGN (11/13)	397,161	656,294	26°08'13.43"	81°47'22.08"

**US Army Corps of Engineers**  
 Jacksonville District  
 SAFETY ON THIS JOB  
 DEPENDS ON YOU

DEPARTMENT OF THE ARMY  
 JACKSONVILLE DISTRICT, CORPS OF ENGINEERS  
 JACKSONVILLE, FLORIDA

Drawn by: **DVT**  
 Checked by: **WMM**  
 Date: **10/11/13**  
 Project: **13-1734-G&S**  
 Drawing: **00 1001 1001**

MABLES TO GORDON PASS  
 COLLIER COUNTY, FLORIDA  
**EXAMINATION SURVEY FY13  
 8, 10 & 12-FOOT PROJECT**  
 STA. 1+00 CUT-13 THRU STA. 10+44.46 CUT-15  
**PLAN**

Scale: AS SHOWN  
 Drawing no.: **9**  
 SHEET 08 OF 08

**GRAPHIC SCALE**  
 100' 0 100' 200'

NOTES:  
 1. REFER TO SURVEY NO. 13-173.  
 2. SEE SHEET NO. 1 FOR SURVEY NOTES.