

MATCHLINE SHEET NO. 5 STA. 90+00

MATCHLINE SHEET NO. 3 STA. 60+00

RGE -400

RGE 00

RGE 400

STA. 61500

STA. 62500

STA. 63500

STA. 64500

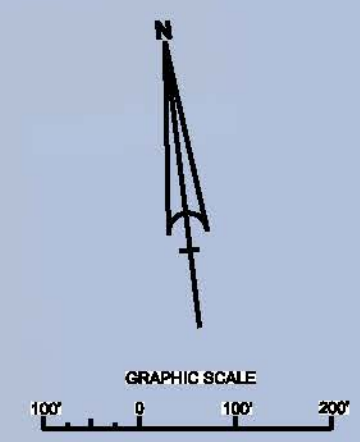
STA. 65500

STA. 66500

**BAR CUT-3**  
AZ-96-63-41

ATLANTIC OCEAN

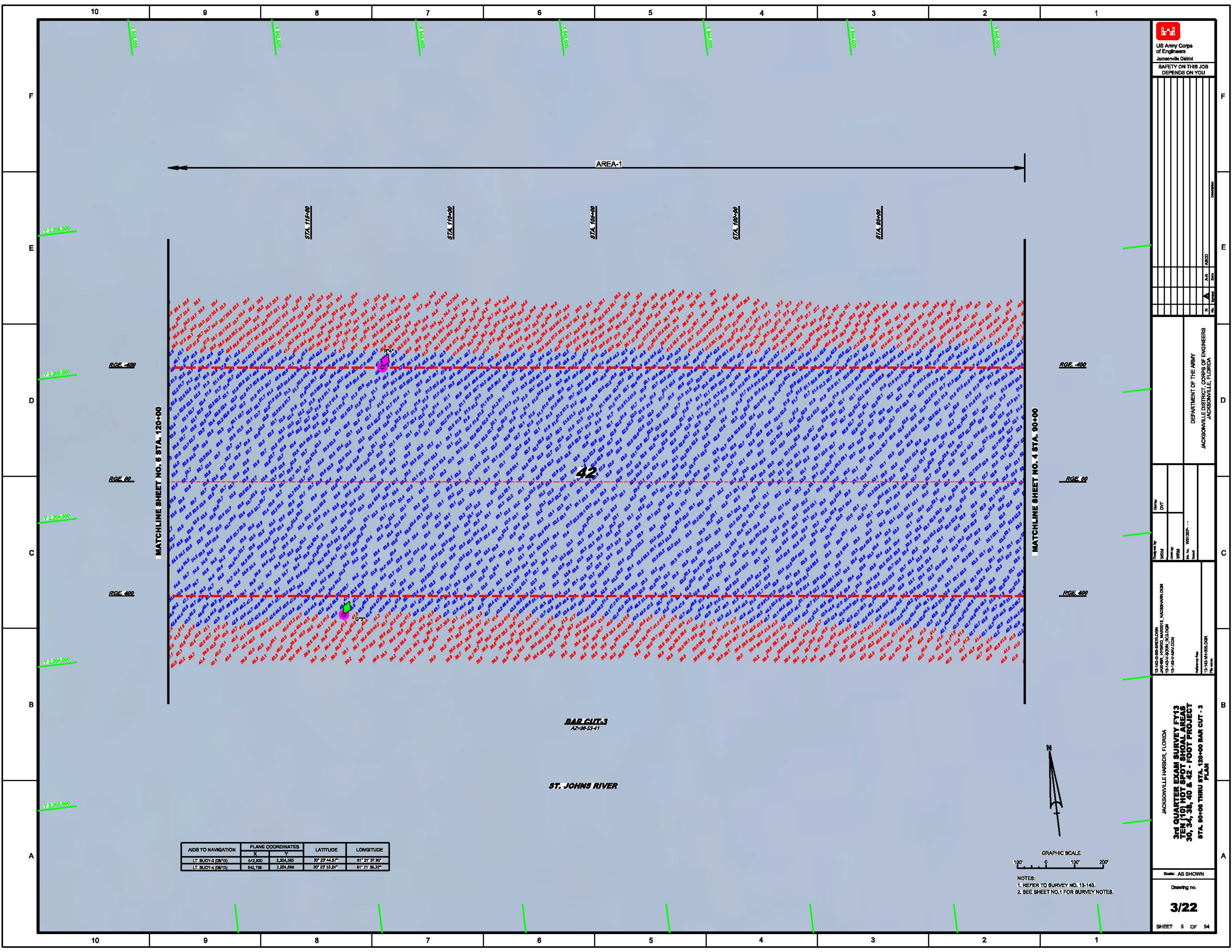
42



NOTES:  
1. REFER TO SURVEY NO. 19-143.  
2. SEE SHEET NO. 1 FOR SURVEY NOTES.

 US Army Corps of Engineers Jacksonville District SAFETY ON THIS JOB DEPENDS ON YOU	
JACKSONVILLE HARBOR, FLORIDA <b>3rd QUARTER EXAM SURVEY FY13</b> <b>TEN (10) HOT SPOT SHOAL AREAS</b> <b>30, 34, 38, 40 &amp; 42 - FOOT PROJECT</b> <b>STA. 60+00 THRU STA. 90+00 BAR CUT - 3</b> PLAN	DEPARTMENT OF THE ARMY JACKSONVILLE DISTRICT, CORPS OF ENGINEERS JACKSONVILLE, FLORIDA
Checked by: DVT Drawn by: WPM Date: 10/27/12	Checked by: WPM Drawn by: WPM Date: 10/27/12
19-163-08-SURVEY JACKSONVILLE HARBOR, FLORIDA 19-163-08-001	
19-163-08-001 JACKSONVILLE HARBOR, FLORIDA	
Scale: AS SHOWN Drawing no. <b>2/22</b> SHEET 04 OF 64	





AIDS TO NAVIGATION	PLANE COORDINATES		LATITUDE	LONGITUDE
	X	Y		
LT. BUOY-3 (08/13)	642,800	2,204,363	30° 29' 44.87"	81° 21' 37.90"
LT. BUOY-4 (08/13)	642,798	2,204,888	30° 29' 53.24"	81° 21' 36.32"

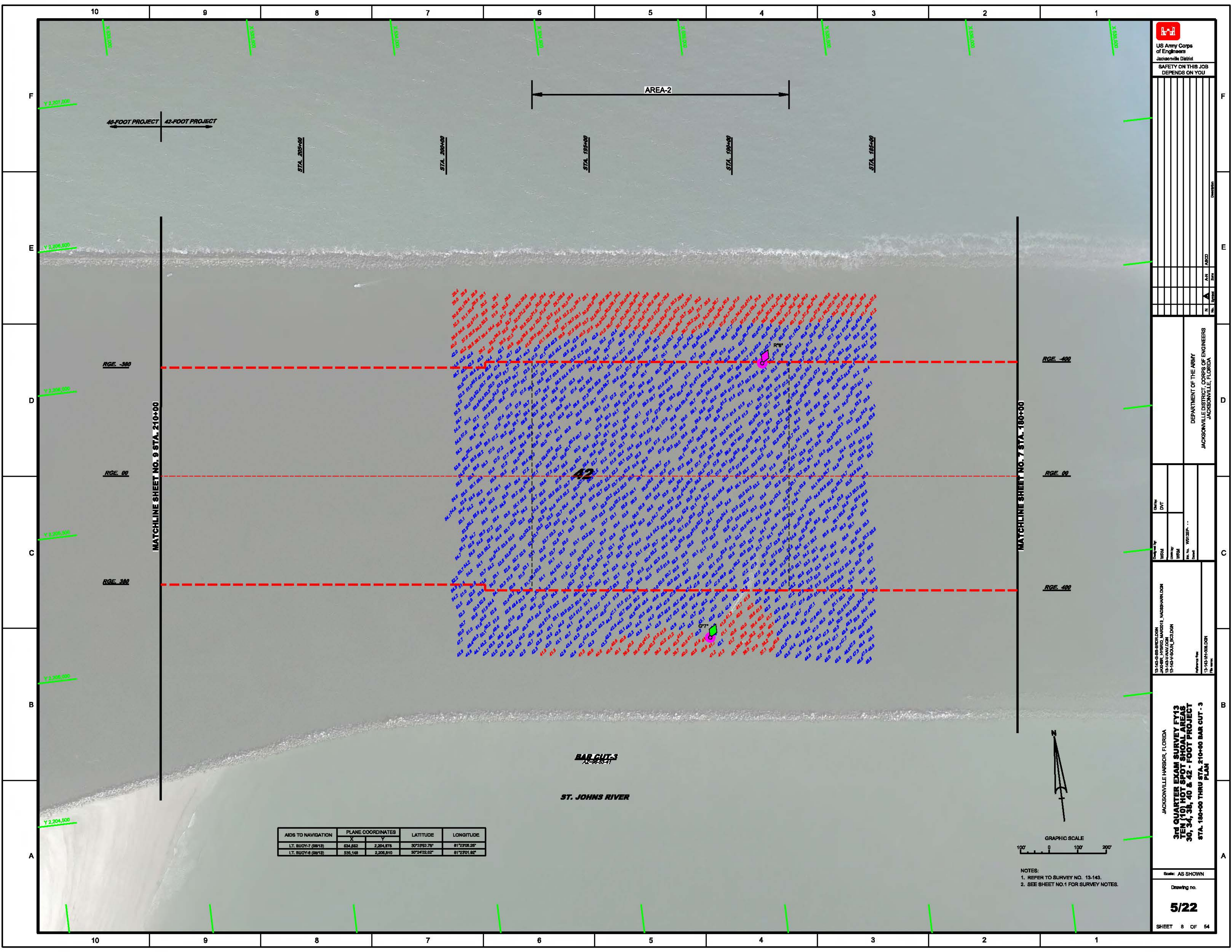


NOTES:  
 1. REFER TO SURVEY NO. 13-143.  
 2. SEE SHEET NO.1 FOR SURVEY NOTES.










AIDS TO NAVIGATION	PLANE COORDINATES		LATITUDE	LONGITUDE
	X	Y		
LT. BUOY-7 (08/13)	534,582	2,204,878	30°29'52.78"	81°29'05.28"
LT. BUOY-6 (08/13)	536,148	2,206,610	30°29'52.02"	81°29'01.82"



NOTES:  
 1. REFER TO SURVEY NO. 13-143.  
 2. SEE SHEET NO.1 FOR SURVEY NOTES.



US Army Corps  
of Engineers  
Jacksonville District  
SAFETY ON THIS JOB  
DEPENDS ON YOU

	DEPARTMENT OF THE ARMY JACKSONVILLE DISTRICT, CORPS OF ENGINEERS JACKSONVILLE, FLORIDA
	JACKSONVILLE HARBOR, FLORIDA <b>3RD QUARTER EXAM SURVEY FY13</b> <b>TEN (10) HOT SPOT SHOAL AREAS</b> <b>30, 34, 38, 40 &amp; 42 - FOOT PROJECT</b> <b>STA. 180+00 THRU STA. 210+00 BAR CUT - 3</b> PLAN
	Scale: AS SHOWN Drawing no. <b>5/22</b> SHEET 8 OF 54

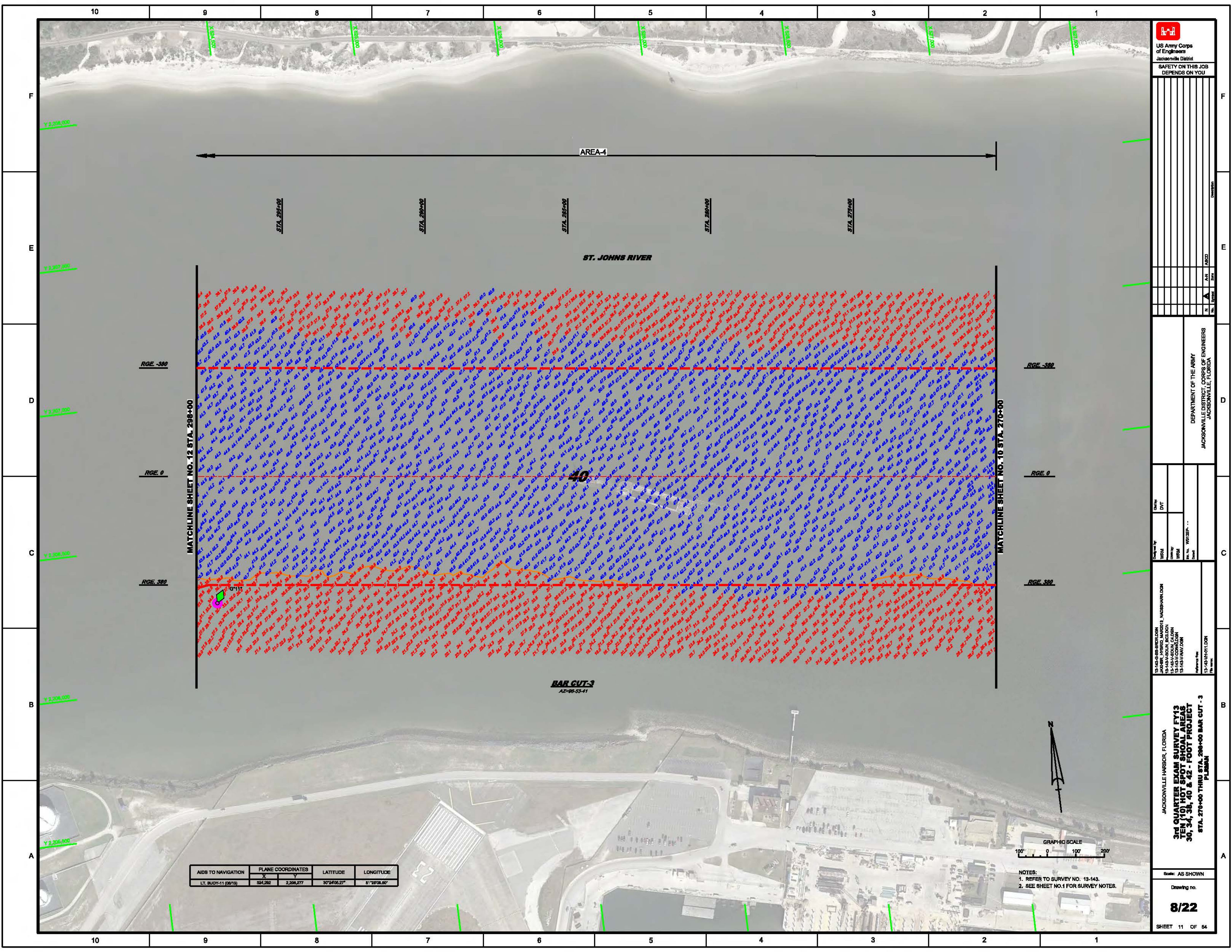












AIDS TO NAVIGATION	PLANE COORDINATES	LATITUDE	LONGITUDE	
X	Y			
LT. BUOY-11 (2873)	324,262	2,208,277	30°34'03.27"	81°28'03.90"



NOTES:  
 1. REFER TO SURVEY NO. 13-143.  
 2. SEE SHEET NO.1 FOR SURVEY NOTES.

US Army Corps of Engineers  
 Jacksonville District  
 SAFETY ON THIS JOB  
 DEPENDS ON YOU

DEPARTMENT OF THE ARMY  
 JACKSONVILLE DISTRICT, CORPS OF ENGINEERS  
 JACKSONVILLE, FLORIDA

JACKSONVILLE HARBOR, FLORIDA  
 3RD QUARTER EXAM SURVEY FY13  
 TEN (10) HOT SPOT SHOAL AREAS  
 30, 34, 38, 40 & 42 - FOOT PROJECT  
 STA. 270+00 THRU STA. 298+00 BAR CUT - 3  
 PLUMMAN

Scale: AS SHOWN  
 Drawing no.  
**8/22**  
 SHEET 11 OF 64













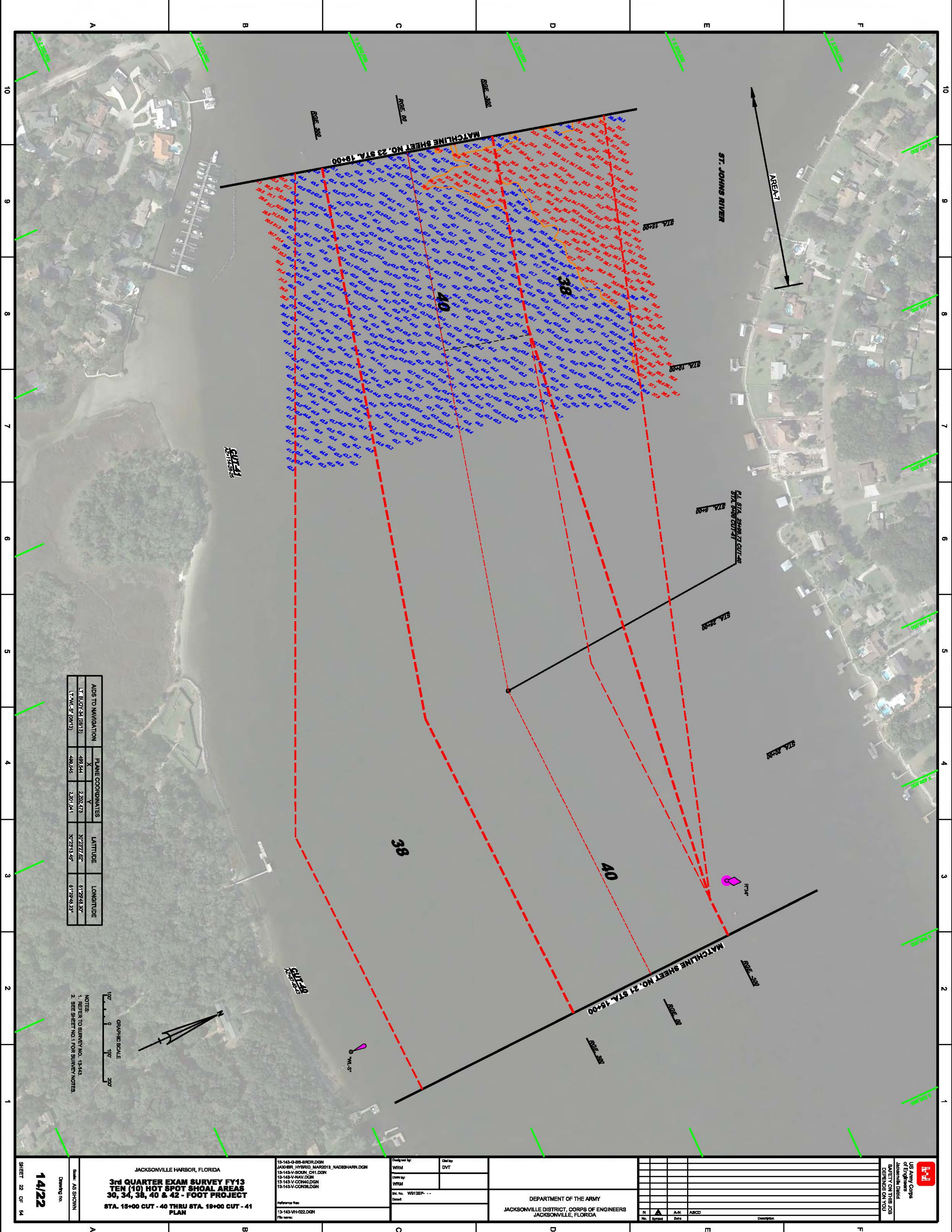










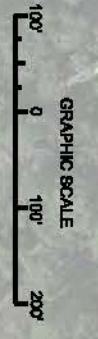


MATCHLINE SHEET NO. 23 STA. 19+00

MATCHLINE SHEET NO. 21 STA. 19+00

AIDS TO NAVIGATION		PLANE COORDINATES		LATITUDE	LONGITUDE
LT. BUOY #4 (08/13)	X	Y			
LT. BUOY #4 (08/13)	499.841	2,202.473	30°22'22.82"	81°29'44.30"	
LT. BUOY #5 (08/13)	499.545	2,201.041	30°23'14.45"	81°29'48.23"	

NOTES:  
 1. REFER TO SURVEY NO. 13443  
 2. SEE SHEET NO. 1 FOR SURVEY NOTES.

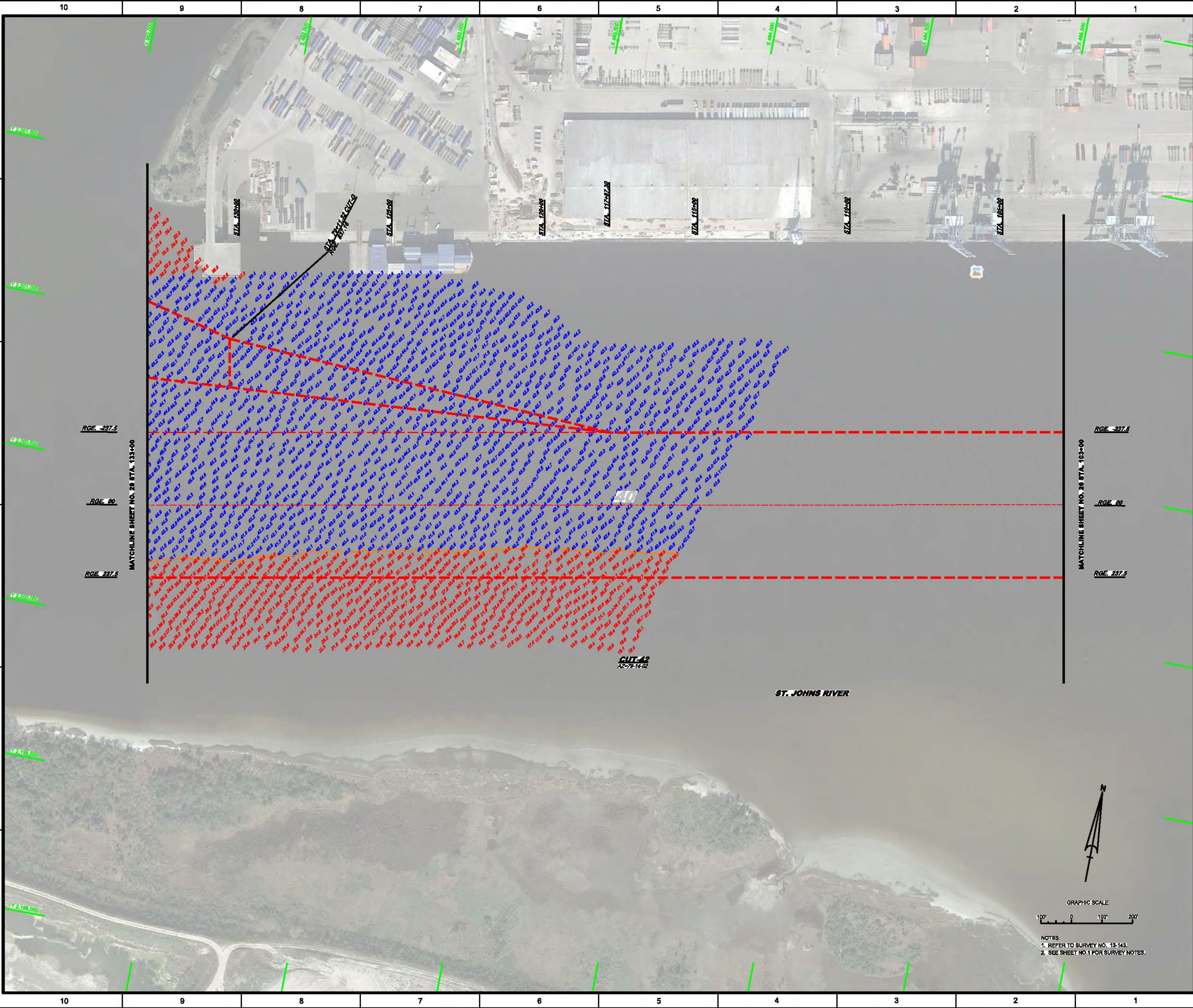


SHEET 22 OF 54 <b>14/22</b> Drawing no. AS SHOWN	JACKSONVILLE HARBOR, FLORIDA <b>3rd QUARTER EXAM SURVEY FY13</b> <b>TEN (10) HOT SPOT SHOAL AREAS</b> <b>30, 34, 38, 40 &amp; 42 - FOOT PROJECT</b> <b>STA. 15+00 CUT - 40 THRU STA. 19+00 CUT - 41</b> <b>PLAN</b>	13-145-G-BB-BRD.DGN JACOBI, HYBRID, MAR2013_NAD08HARN.DGN 13-145-V-CONM.DGN 13-145-V-NAV.DGN 13-145-V-COM4.DGN 13-145-V-CON3.DGN	Designed by: WRM Drawn by: WRM Rev. No. V012EP -- Date:	Checked by: DVT	DEPARTMENT OF THE ARMY JACKSONVILLE DISTRICT, CORPS OF ENGINEERS JACKSONVILLE, FLORIDA	<table border="1"> <tr> <th>No.</th> <th>Symbol</th> <th>Zone</th> <th>Description</th> </tr> <tr> <td> </td> <td> </td> <td> </td> <td> </td> </tr> <tr> <td> </td> <td> </td> <td> </td> <td> </td> </tr> <tr> <td> </td> <td> </td> <td> </td> <td> </td> </tr> </table>	No.	Symbol	Zone	Description													US Army Corps of Engineers Jacksonville District SAFETY ON THIS JOB DEPENDS ON YOU
	No.	Symbol	Zone	Description																			









DEPARTMENT OF THE ARMY JACKSONVILLE DISTRICT, CORPS OF ENGINEERS JACKSONVILLE, FLORIDA	
Checked by: DVT Drawn by: WPM Date: 10/17/2013	13-143-00-BIB-01.DGN JASPER, JERRID, MARDON, JACOB@HAR.COM 13-143-00-010.DGN 13-143-00-010.DGN
JACKSONVILLE HARBOR, FLORIDA <b>3RD QUARTER EXAM SURVEY FY13</b> <b>TEN (10) HOT SPOT SHOAL AREAS</b> <b>30, 34, 38, 40 &amp; 42 - FOOT PROJECT</b> <b>PLAN</b> STA. 103+00 THRU STA. 133+00 CUT - 42	
Scale: AS SHOWN Drawing no. <b>16/22</b> SHEET 27 OF 54	NOTES: 1. REFER TO SURVEY NO. 13-143. 2. SEE SHEET NO.1 FOR SURVEY NOTES.

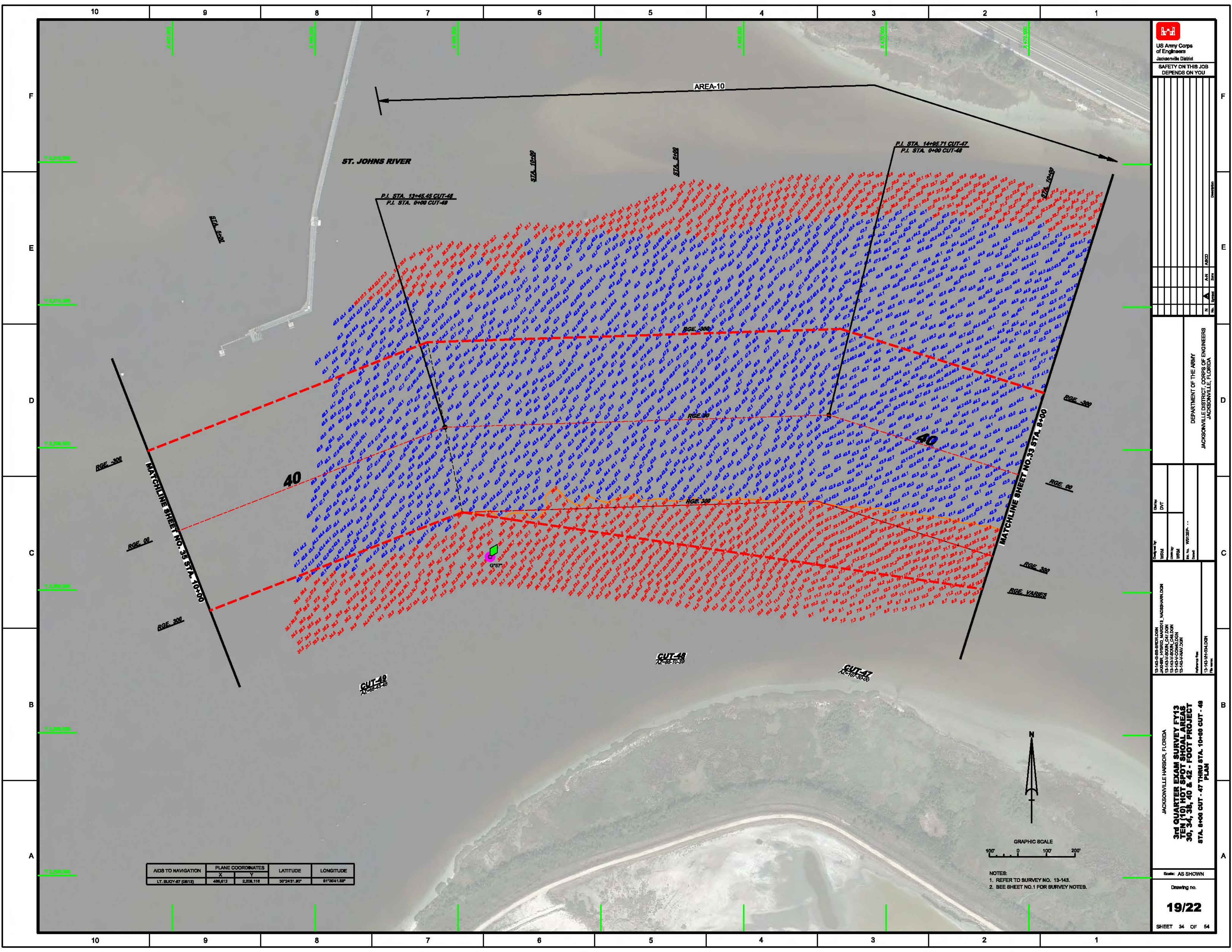




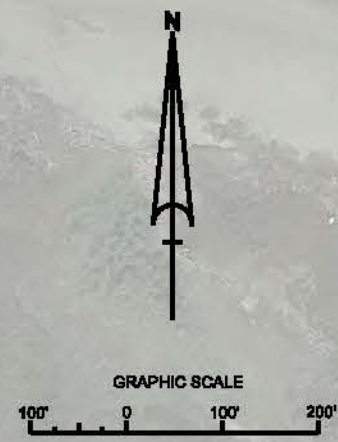









AIDS TO NAVIGATION	PLANE COORDINATES		LATITUDE	LONGITUDE
	X	Y		
LT. BUOY-47 (2811)	486,612	2,208,118	30°24'31.80"	81°56'41.88"



NOTES:  
 1. REFER TO SURVEY NO. 13-143.  
 2. SEE SHEET NO.1 FOR SURVEY NOTES.



US Army Corps of Engineers  
 Jacksonville District  
**SAFETY ON THIS JOB  
 DEPENDS ON YOU**

DATE	BY	CHECKED	APPROVED	TITLE	OFFICE	PROJECT	SHEET NO.	TOTAL SHEETS	SCALE

DEPARTMENT OF THE ARMY  
 JACKSONVILLE DISTRICT, CORPS OF ENGINEERS  
 JACKSONVILLE, FLORIDA

<p>13-143-08-BIRD/JLJEN          JASPER JIMMIE MADONIS, JACKSONVILLE, FLORIDA          13-143-08-BOHN, CARLTON          13-143-08-COMBOLDEN          13-143-08-HUNT/JSON</p>	<p>Checked by: DVT          Drawn by: WPM          Surveyed by: WPM          Date: 10/27/2011</p>
--	---

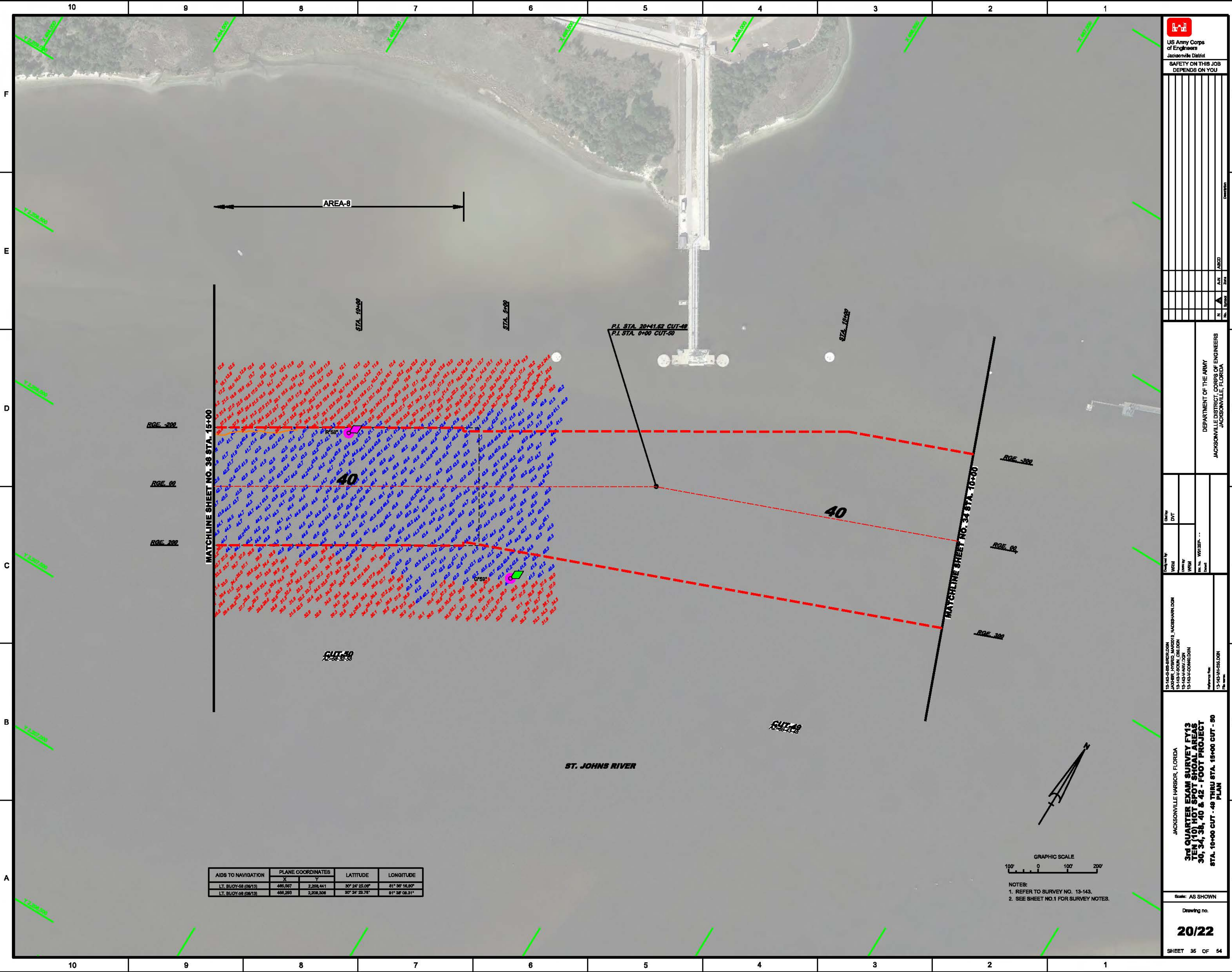
JACKSONVILLE HARBOR, FLORIDA  
**3RD QUARTER EXAM SURVEY FY13  
 TEN (10) HOT SPOT SHOAL AREAS  
 30, 34, 38, 40 & 42 - FOOT PROJECT**  
 STA. 8+00 CUT - 47 THRU STA. 10+00 CUT - 48  
 PLAN

Scale: AS SHOWN

Drawing no.  
**19/22**

SHEET 34 OF 54






AIDS TO NAVIGATION	PLANE COORDINATES		LATITUDE	LONGITUDE
	X	Y		
LT. BUOY-88 (0813)	485,897	2,208,441	30° 24' 25.00"	81° 38' 16.90"
LT. BUOY-38 (0813)	468,293	2,208,308	30° 24' 23.78"	81° 38' 08.31"



NOTES:  
 1. REFER TO SURVEY NO. 13-143.  
 2. SEE SHEET NO.1 FOR SURVEY NOTES.



US Army Corps of Engineers  
 Jacksonville District  
 SAFETY ON THIS JOB  
 DEPENDS ON YOU

	DEPARTMENT OF THE ARMY JACKSONVILLE DISTRICT, CORPS OF ENGINEERS JACKSONVILLE, FLORIDA
	JACKSONVILLE HARBOR, FLORIDA 3RD QUARTER EXAM SURVEY FY13 TEN (10) HOT SPOT SHOAL AREAS 30, 34, 38, 40 & 42 - FOOT PROJECT STA. 10+00 CUT - 48 THRU STA. 18+00 CUT - 50 PLAN
	Scale: AS SHOWN Drawing no. <b>20/22</b> SHEET 35 OF 54







