

NEW PASS SARASOTA COUNTY, FLORIDA HYDROGRAPHIC EXAM SURVEY FY13 8 AND 10-FOOT PROJECT

SURVEY NOTES

- REFER TO SURVEY NO. 13-137.
- SOUNDINGS ARE IN FEET AND TENTHS AND REFER TO NOAA'S REPORTED MEAN LOWER LOW WATER (MLLW) OF THE 1983-2001 TIDAL EPOCH.
- TIDAL REDUCTIONS WERE OBTAINED UTILIZING A REAL-TIME KINEMATIC (RTK) GPS AND REFERENCED TO MLLW UTILIZING A HYPACK KINEMATIC TIDE DATUM (KTD) MODEL. KTD FILE NAME IS: "SPC-FL-WEST-2010-12-07.KTD".
- ALL ELEVATIONS ARE BELOW THE CHART DATUM UNLESS PRECEDED BY A (+) SIGN.
- PLANE COORDINATES ARE BASED ON THE TRANSVERSE MERCATOR PROJECTION FOR THE WEST ZONE OF FLORIDA AND REFERENCED TO NORTH AMERICAN DATUM OF 1983 (NAD83).
- ALL AZIMUTHS ARE GRID; RECKONED CLOCKWISE FROM SOUTH.
- ALL STATIONING REFERS TO THE CENTERLINE OF THE CHANNEL.
- THIS SURVEY WAS PERFORMED USING REAL-TIME KINEMATIC (RTK) GPS POSITIONING WITH THE FOLLOWING REFERENCE BASE LOCATION:
REFERENCE BASE LOCATED AT "NWSA-96" (PID# BBDG39)
- DEPTHS DEPICTED BY THIS SURVEY ARE REFERENCED TO MLLW, TIDAL EPOCH 1983-2001 AS REPORTED BY THE NATIONAL OCEANIC AND ATMOSPHERIC ADMINISTRATION (NOAA). NOAA'S DATUM MODEL WAS USED AND CALIBRATED TO THE PUBLISHED MLLW HEIGHTS OF THE BENCHMARKS ASSOCIATED WITH THE TIDE GAGE SITES SPECIFIED BELOW:
NOAA TIDAL STATION 872-8083 USED FOR ALL CUTS. (PID# A97713)
VERTICAL MEASUREMENTS WERE MADE USING A ROSS SMARTSOUNDER DUAL-FREQUENCY 28/200 KHZ SINGLE-BEAM TRANSDUCER. ALL SOUNDINGS SHOWN ARE IN HIGH FREQUENCY.
- AIDS TO NAVIGATION WERE LOCATED DURING THIS SURVEY.
- THE INFORMATION DEPICTED ON THIS MAP REPRESENTS THE RESULTS OF SURVEYS MADE ON THE DATES INDICATED ABOVE AND CAN ONLY BE CONSIDERED AS INDICATING THE GENERAL CONDITIONS AT THAT TIME. THIS CHART IS SOLELY FOR THE DISTRIBUTION OF AVAILABLE DEPTHS AT THE TIME OF THE SURVEY AND IS NOT TO BE USED FOR NAVIGATION.
- SURVEY ACCURACY PERFORMANCE STANDARDS, QUALITY CONTROL, AND QUALITY ASSURANCE REQUIREMENTS WERE FOLLOWED DURING THIS SURVEY IN ACCORDANCE WITH USACE EM 1110-2-1003, HYDROGRAPHIC SURVEYING, 1 JAN 02.

VESSEL	DATE OF SURVEY	CUT
WB-34	20 NOV 2013	1
WB-34	03-04 DEC 2013	2 THRU TURNING BASIN

LEGEND	
	GPS MONUMENT
	LIGHTED BEACON
	GREEN DAYBEACON
	RED DAYBEACON
	RED LIGHTED BUOY
	GREEN LIGHTED BUOY
	CAN BUOY
	NUN BUOY
	TIDE STAFF
	PROJECT DEPTH

US Army Corps of Engineers
Jacksonville District
SAFETY ON THIS JOB
DEPENDS ON YOU

DEPARTMENT OF THE ARMY
JACKSONVILLE DISTRICT, CORPS OF ENGINEERS
JACKSONVILLE, FLORIDA

NEW PASS
SARASOTA COUNTY, FLORIDA
EXAMINATION SURVEY FY13
8 & 10-FOOT PROJECT
INDEX, LOCATION AND VICINITY
MAP

Scale: AS SHOWN
Drawing no. 1
SHEET 01 OF 07

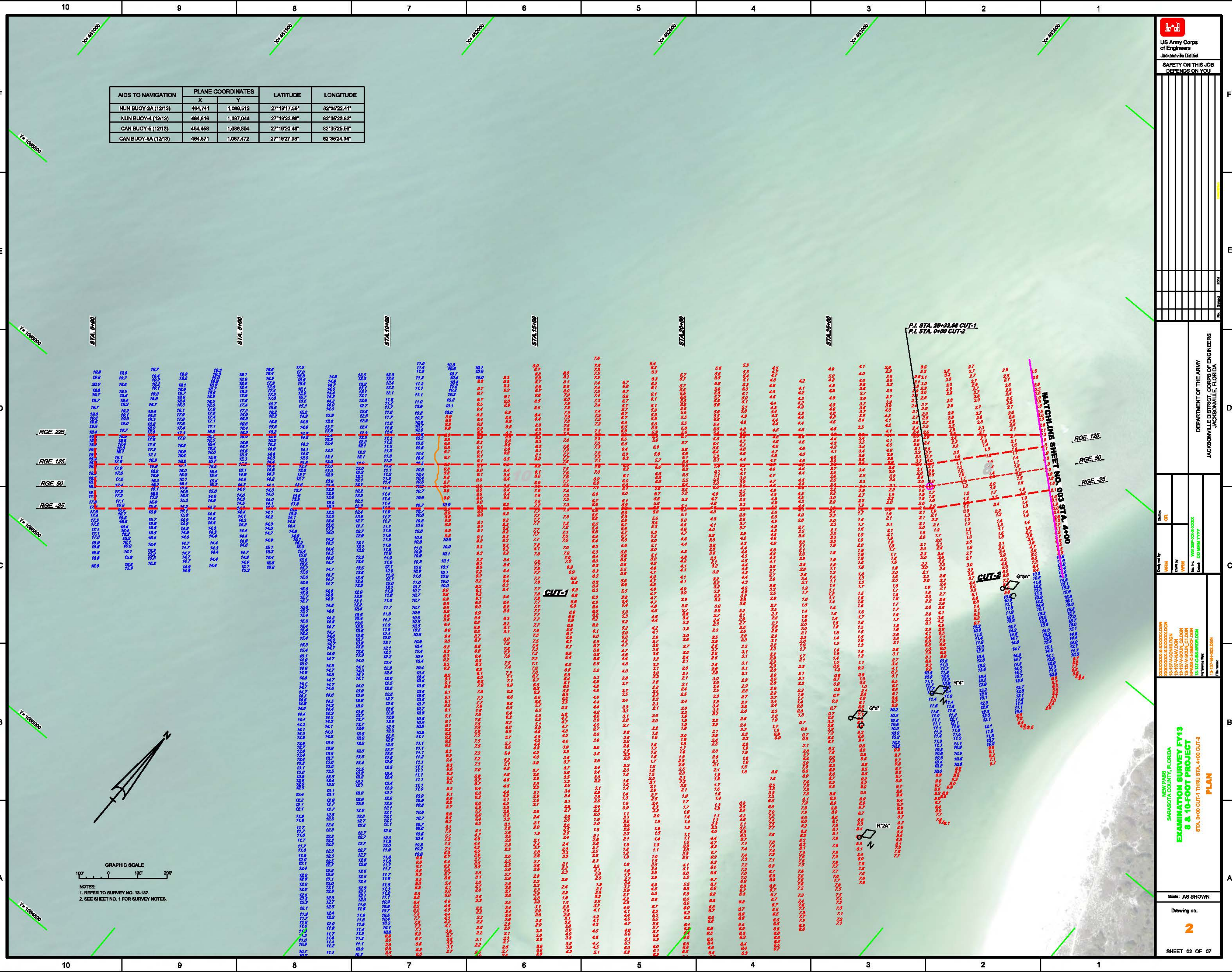
AIDS TO NAVIGATION	PLANE COORDINATES		LATITUDE	LONGITUDE
	X	Y		
NUN BUOY-2A (12/13)	464,741	1,086,512	27°19'17.50"	82°35'22.41"
NUN BUOY-4 (12/13)	464,816	1,087,048	27°19'22.86"	82°35'23.62"
CAN BUOY-5 (12/13)	464,468	1,086,804	27°19'20.46"	82°35'26.56"
CAN BUOY-6A (12/13)	464,671	1,087,472	27°19'27.08"	82°35'24.34"

US Army Corps of Engineers
Jacksonville District
SAFETY ON THIS JOB
DEPENDS ON YOU

DEPARTMENT OF THE ARMY
JACKSONVILLE DISTRICT, CORPS OF ENGINEERS
JACKSONVILLE, FLORIDA

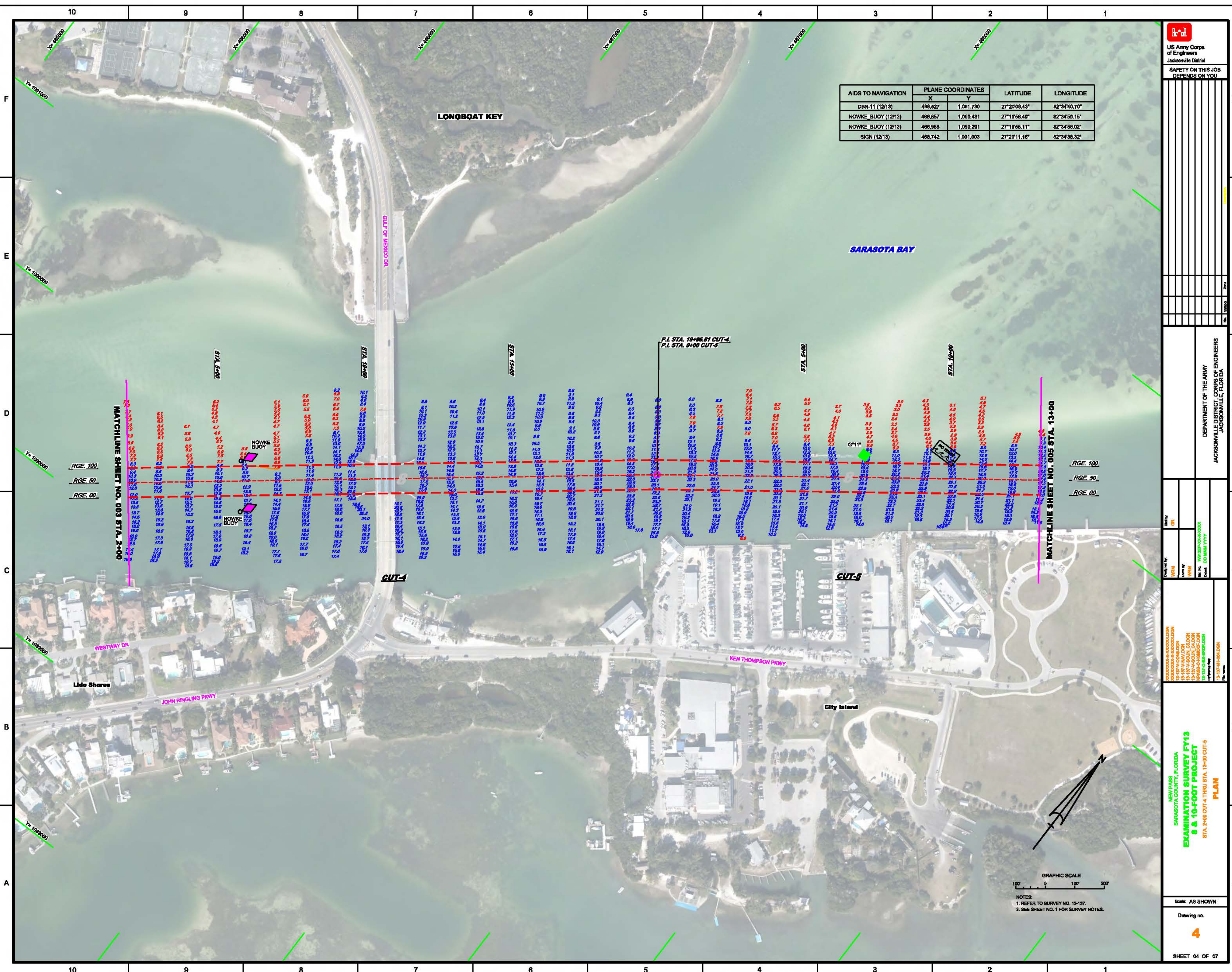
NEW PASS
SARASOTA COUNTY, FLORIDA
EXAMINATION SURVEY FY13
8 & 10-FOOT PROJECT
STA. 0+00 CUT-1 THRU STA. 4+00 CUT-2
PLAN

Scale: AS SHOWN
Drawing no. 2
SHEET 02 OF 07



GRAPHIC SCALE
100' 0 100' 200'

NOTES:
1. REFER TO SURVEY NO. 13-137.
2. SEE SHEET NO. 1 FOR SURVEY NOTES.



AIDS TO NAVIGATION	PLANE COORDINATES		LATITUDE	LONGITUDE
	X	Y		
DBN-11 (12/13)	488,827	1,081,730	27°20'08.43"	82°34'40.70"
NOWKE_BUOY (12/13)	466,857	1,060,431	27°18'56.43"	82°34'58.15"
NOWKE_BUOY (12/13)	466,958	1,050,291	27°18'56.11"	82°34'58.02"
SIGN (12/13)	466,742	1,081,803	27°20'11.16"	82°34'36.32"

US Army Corps of Engineers
Jacksonville District

SAFETY ON THIS JOB DEPENDS ON YOU

DEPARTMENT OF THE ARMY
JACKSONVILLE DISTRICT, CORPS OF ENGINEERS
JACKSONVILLE, FLORIDA

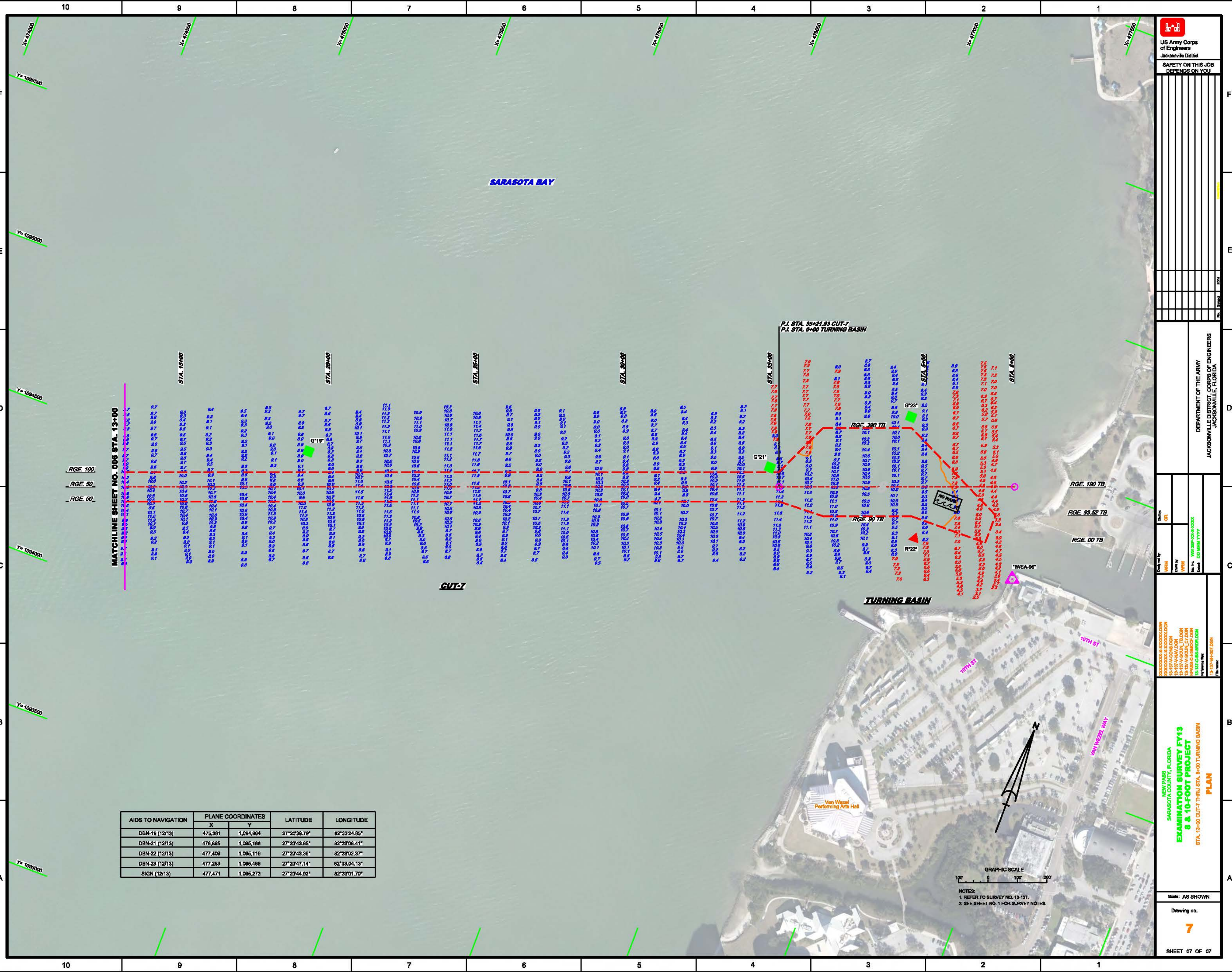
Drawn by: GFL
Checked by: WPM
Reviewed by: WPM
Project No.: 13-1374-100-000
Drawing No.: 4

NEW PASS
SARASOTA COUNTY, FLORIDA
**EXAMINATION SURVEY FY13
8 & 10-FOOT PROJECT**
STA. 2+00 CUT-4 THRU STA. 13+00 CUT-5
PLAN

Scale: AS SHOWN
Drawing no.: **4**
SHEET 04 OF 07

GRAPHIC SCALE
1" = 200'

NOTES:
1. REFER TO SURVEY NO. 13-137.
2. SEE SHEET NO. 1 FOR SURVEY NOTES.



SARASOTA BAY

P.I. STA. 35+21.03 CUT-7
P.I. STA. 0+00 TURNING BASIN

MATCHLINE SHEET NO. 006 STA. 13+00

RGE. 100
RGE. 50
RGE. 00

AIDS TO NAVIGATION	PLANE COORDINATES		LATITUDE	LONGITUDE
	X	Y		
DBN-19 (12/13)	475,581	1,094,884	27°20'39.79"	82°33'24.85"
DBN-21 (12/13)	476,885	1,095,168	27°20'43.85"	82°33'08.41"
DBN-22 (12/13)	477,409	1,095,116	27°20'43.36"	82°33'02.37"
DBN-23 (12/13)	477,253	1,095,488	27°20'47.14"	82°33'04.13"
SIGN (12/13)	477,471	1,095,273	27°20'44.92"	82°33'01.70"

GRAPHIC SCALE
100' 0 100 200
NOTES:
1. REFER TO SURVEY NO. 13-137.
2. SEE SHEET NO. 1 FOR SURVEY NOTES.