

US Army Corps of Engineers
Jacksonville District
SAFETY ON THIS JOB
DEPENDS ON YOU

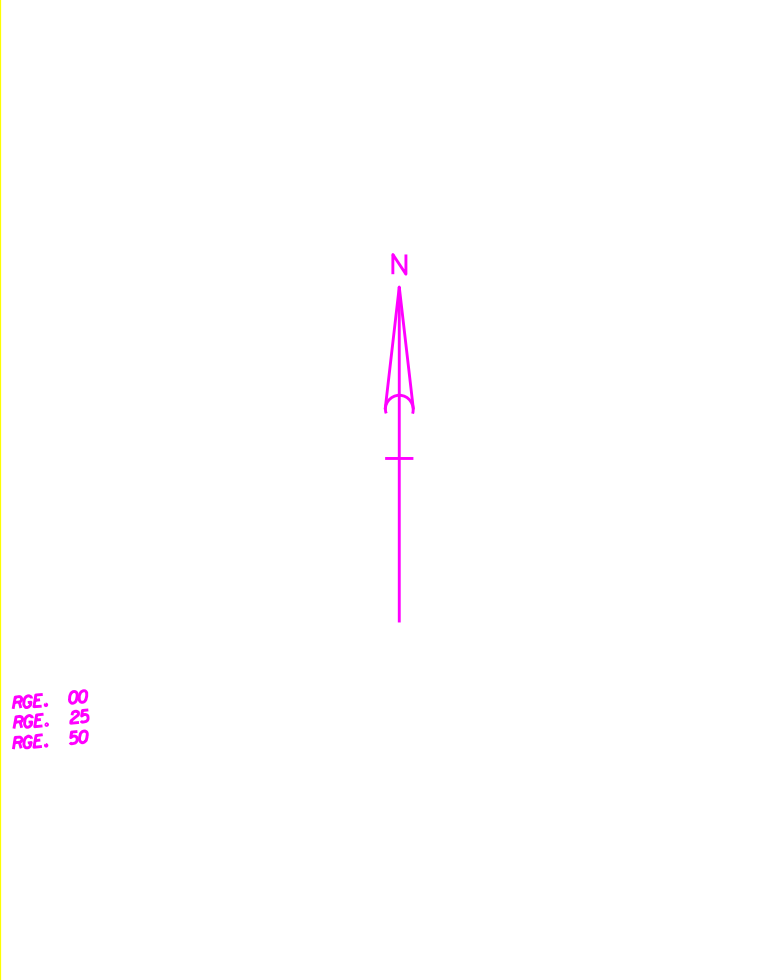
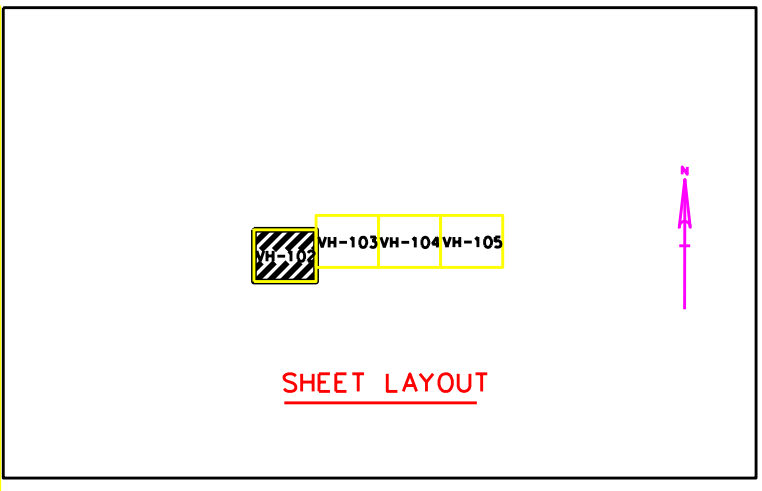
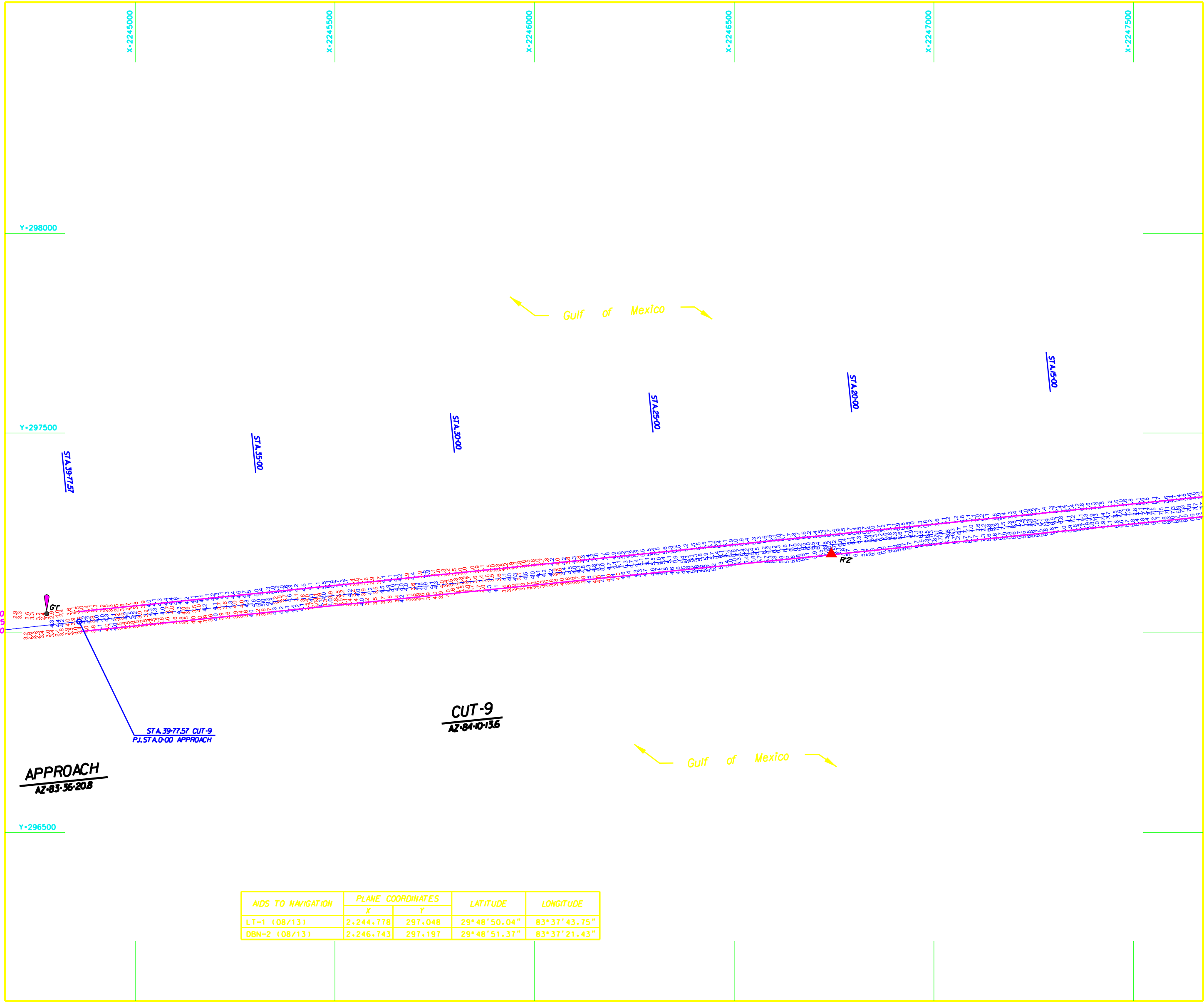
Checked By:	GRN
Designed By:	BPC
Drawn By:	BPC
File No.:	WV258-24-0001
Drawn Date:	19 NOV 2013

DEGROVE SURVEYORS, INC.
215 W. UNIVERSITY BLVD.
JACKSONVILLE, FLORIDA

DEPARTMENT OF THE ARMY
JACKSONVILLE DISTRICT, CORPS OF ENGINEERS
JACKSONVILLE, FLORIDA

KEATON BEACH, FLORIDA
**PROJECT CONDITION SURVEY
4 - FOOT PROJECT**
**GULF OF MEXICO TO CUT - 1
PLAN**

Scale: AS SHOWN
Drawing no.
VH-101



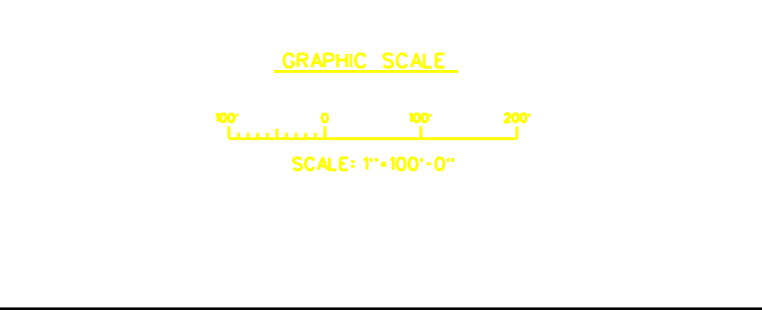
ABBREVIATIONS

RGE.	= RANGE
STA.	= STATION
AZ.	= AZIMUTH
P. I.	= POINT OF INTERSECTION
R	= RED
G	= GREEN

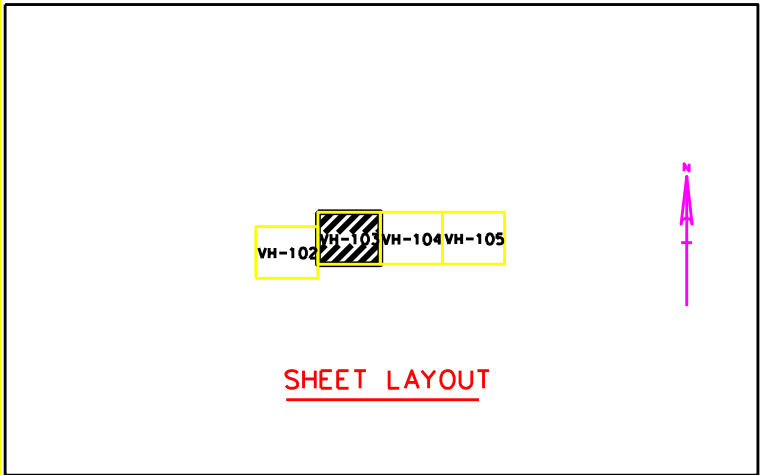
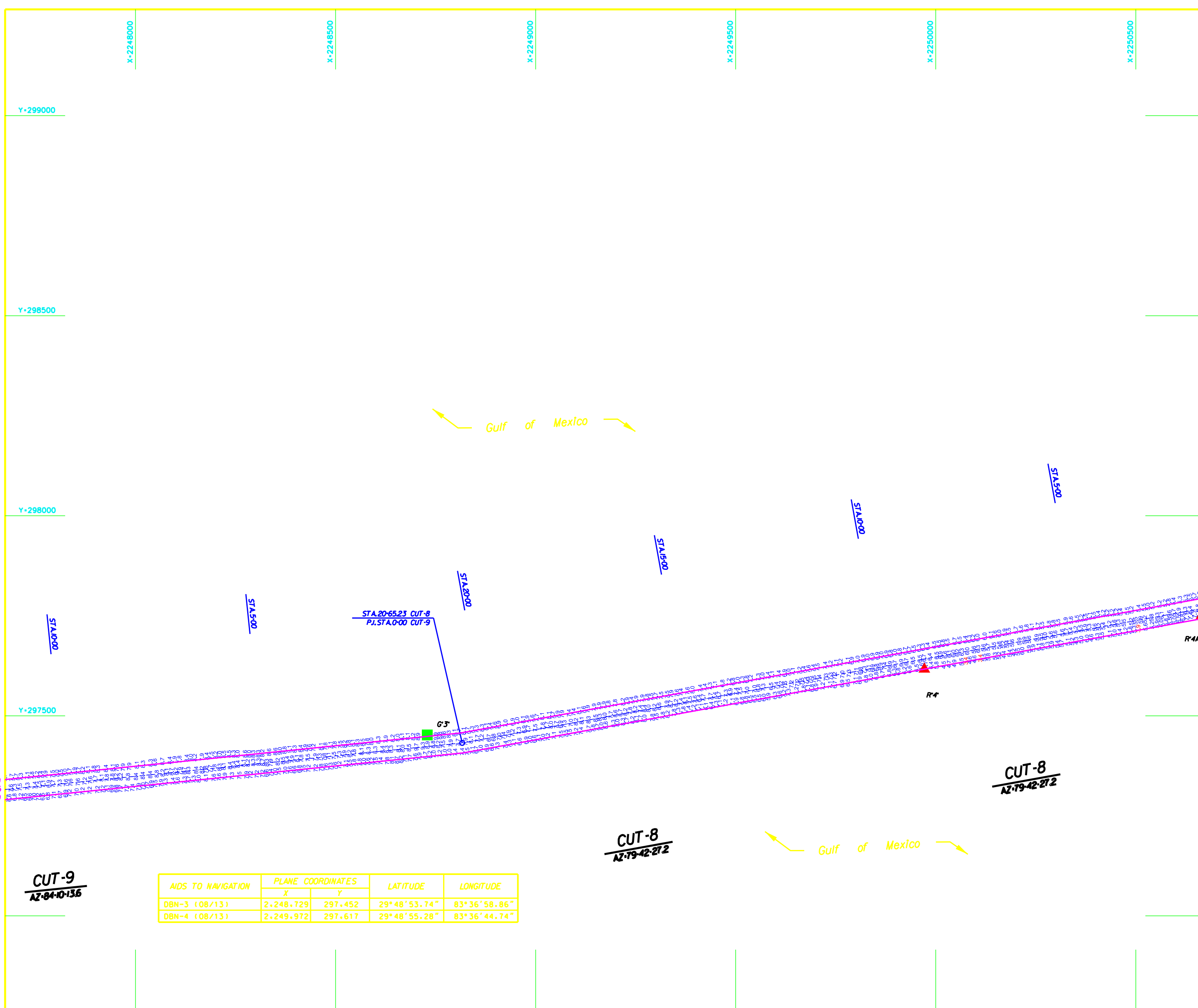
LEGEND

---	CHANNEL CENTERLINE
---	CONTOUR W/ ANNOTATION
+	BENCHMARK
+	LIGHTED BEACON
+	GREEN DAYBEACON
+	RED DAYBEACON
+	RED LIGHTED BUOY
+	GREEN LIGHTED BUOY
+	CAN BUOY
+	NUN BUOY
+	NO WAKE SIGN
+	TIDE STAFF

NOTES:
1. REFER TO SURVEY 13-130.
2. SEE SHEET 0001 THIS SET FOR ALL NOTES.



AIDS TO NAVIGATION	PLANE COORDINATES		LATITUDE	LONGITUDE
	X	Y		
LT-1 (08/13)	2,244,778	297,048	29°48'50.04"	83°37'43.75"
DBN-2 (08/13)	2,246,743	297,197	29°48'51.37"	83°37'21.43"



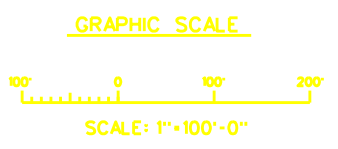
ABBREVIATIONS

RGE.	=	RANGE
STA.	=	STATION
AZ.	=	AZIMUTH
P. I.	=	POINT OF INTERSECTION
R	=	RED
G	=	GREEN

LEGEND

---	CHANNEL CENTERLINE
---	CONTOUR W/ ANNOTATION
+BM	BENCHMARK
▲	LIGHTED BEACON
▲	GREEN DAYBEACON
▲	RED DAYBEACON
▲	RED LIGHTED BUOY
▲	GREEN LIGHTED BUOY
▲	CAN BUOY
▲	NUN BUOY
▲	NO WAKE SIGN
▲	TIDE STAFF

NOTES:
1. REFER TO SURVEY 13-130.
2. SEE SHEET 0001 THIS SET FOR ALL NOTES.



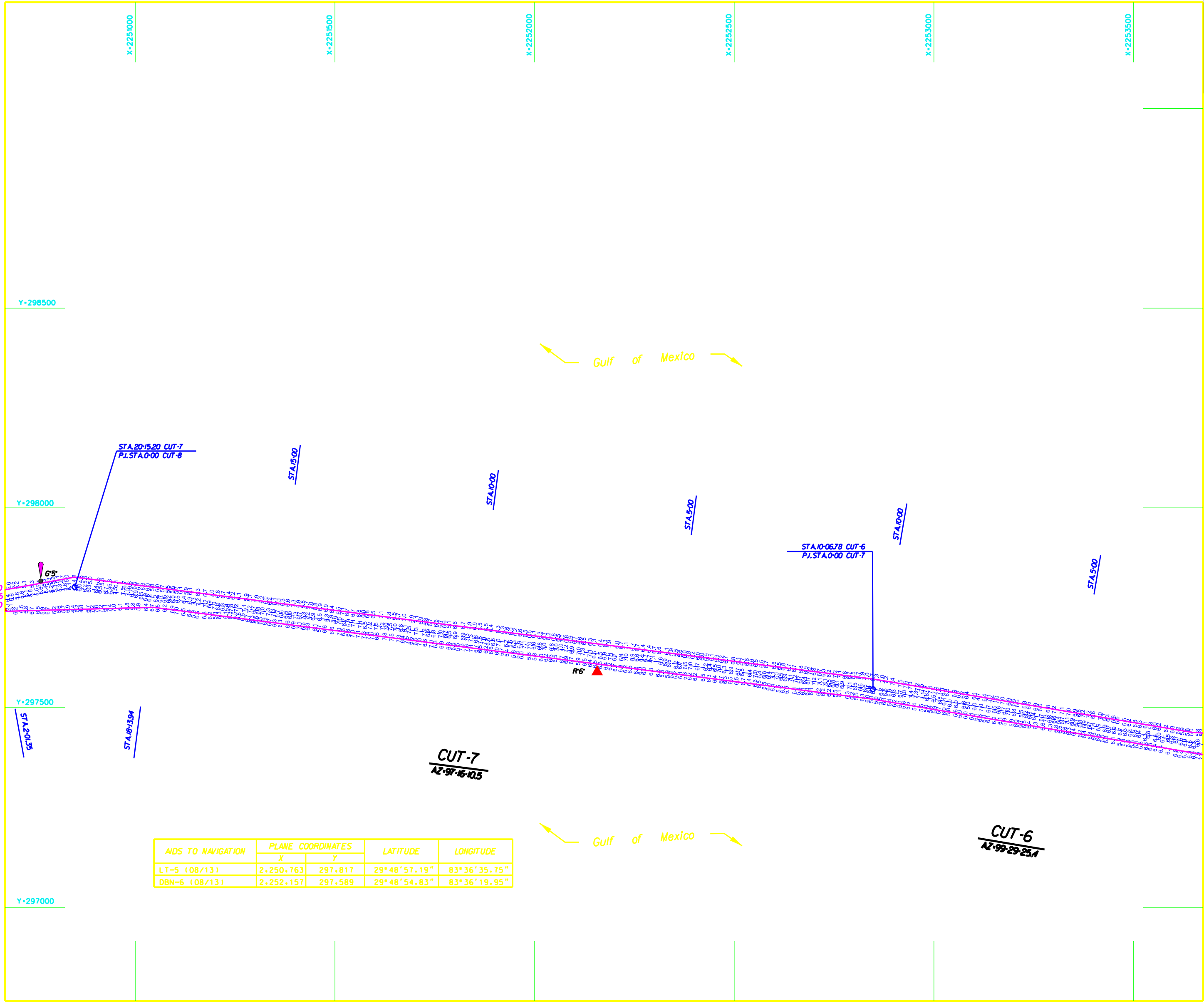
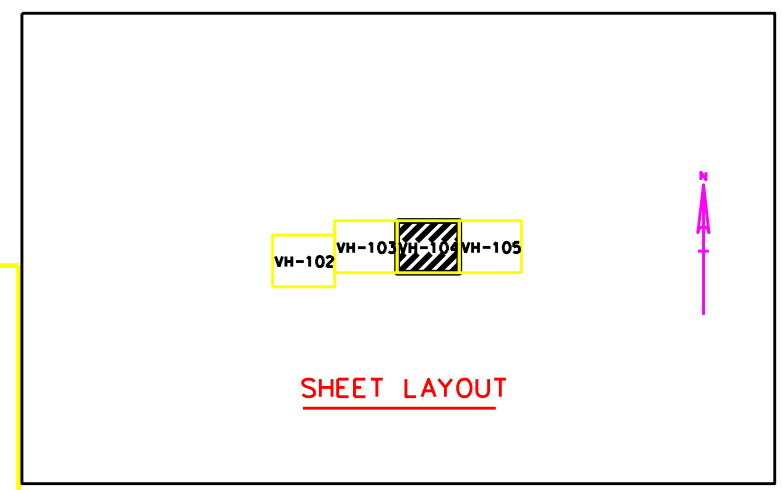
AIDS TO NAVIGATION	PLANE COORDINATES		LATITUDE	LONGITUDE
	X	Y		
DBN-3 (08/13)	2,248,729	297,452	29°48'53.74"	83°36'58.86"
DBN-4 (08/13)	2,249,972	297,617	29°48'55.28"	83°36'44.74"

DEGROVE SURVEYORS, INC.
2151 N. UNIVERSITY BLVD.
JACKSONVILLE, FLORIDA
DEPARTMENT OF THE ARMY
JACKSONVILLE DISTRICT, CORPS OF ENGINEERS
JACKSONVILLE, FLORIDA

Designed by: BDC
Checked by: GRN
Drawn by: BDC
File No.: W03826-24-0001
Date: 19 NOV 2013
Reference Sheet: 13-130A-102.DGN
File Name:

KEATON BEACH, FLORIDA
**PROJECT CONDITION SURVEY
4-Footer PROJECT**
**GULF OF MEXICO TO CUT - 1
PLAN**

Scale: AS SHOWN
Drawing no.
VH-102



AIDS TO NAVIGATION	PLANE COORDINATES		LATITUDE	LONGITUDE
	X	Y		
LT-5 (08/13)	2,250,763	297,817	29°48'57.19"	83°36'35.75"
DBN-6 (08/13)	2,252,157	297,589	29°48'54.83"	83°36'19.95"

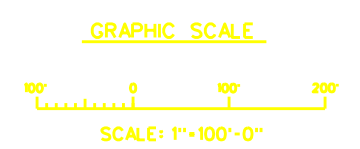
ABBREVIATIONS

RGE.	=	RANGE
STA.	=	STATION
AZ.	=	AZIMUTH
P.I.	=	POINT OF INTERSECTION
R.	=	RED
G.	=	GREEN

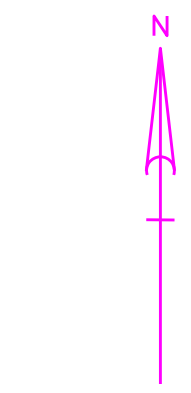
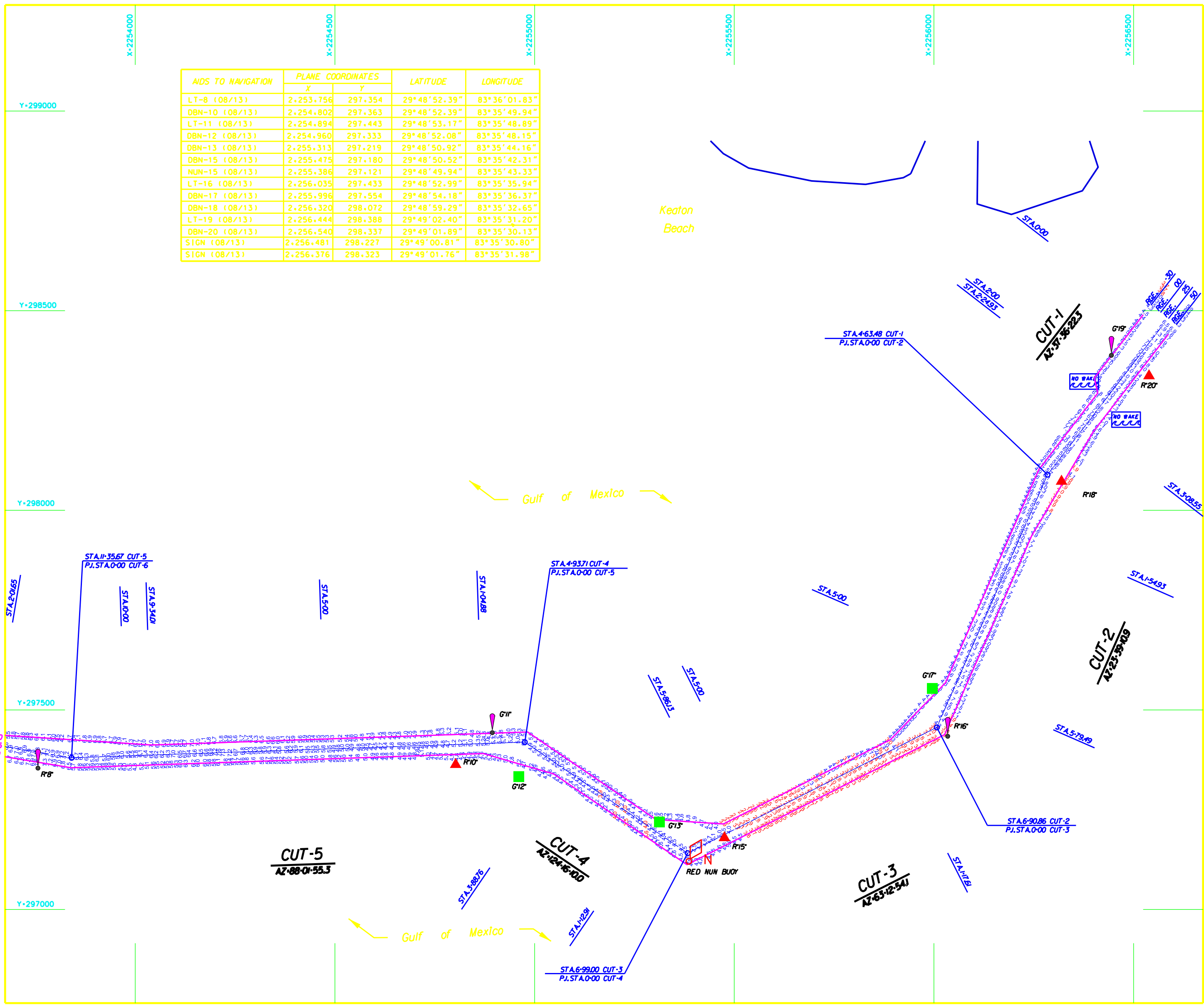
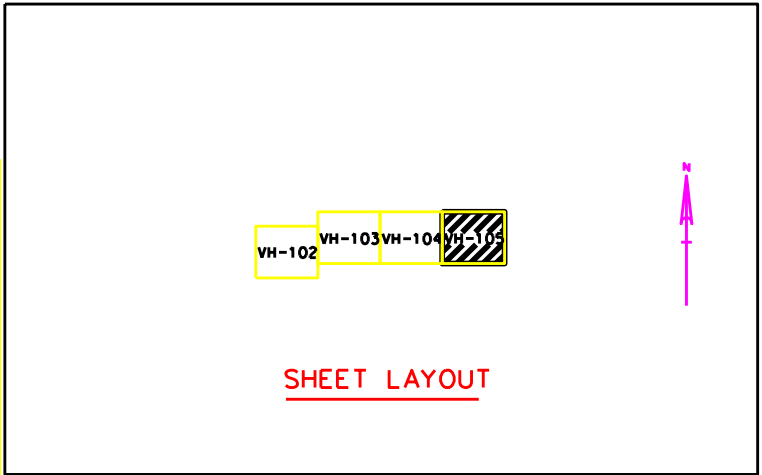
LEGEND

	CHANNEL CENTERLINE
	CONTOUR W/ ANNOTATION
	BENCHMARK
	LIGHTED BEACON
	GREEN DAY BEACON
	RED DAY BEACON
	RED LIGHTED BUOY
	GREEN LIGHTED BUOY
	CAN BUOY
	NUN BUOY
	NO WAKE SIGN
	TIDE STAFF

NOTES:
1. REFER TO SURVEY 13-130.
2. SEE SHEET 0001 THIS SET FOR ALL NOTES.



AIDS TO NAVIGATION	PLANE COORDINATES		LATITUDE	LONGITUDE
	X	Y		
LT-8 (08/13)	2+253+756	297+354	29°48'52.39"	83°36'01.83"
DBN-10 (08/13)	2+254+602	297+363	29°48'52.39"	83°35'49.94"
LT-11 (08/13)	2+254+894	297+443	29°48'53.17"	83°35'48.89"
DBN-12 (08/13)	2+254+960	297+333	29°48'52.08"	83°35'48.15"
DBN-13 (08/13)	2+255+313	297+219	29°48'50.92"	83°35'44.16"
DBN-15 (08/13)	2+255+475	297+180	29°48'50.52"	83°35'42.31"
NUN-15 (08/13)	2+255+386	297+121	29°48'49.94"	83°35'43.33"
LT-16 (08/13)	2+256+035	297+433	29°48'52.99"	83°35'35.94"
DBN-17 (08/13)	2+255+996	297+554	29°48'54.18"	83°35'36.37"
DBN-18 (08/13)	2+256+320	298+072	29°48'59.29"	83°35'32.65"
LT-19 (08/13)	2+256+444	298+388	29°49'02.40"	83°35'31.20"
DBN-20 (08/13)	2+256+540	298+337	29°49'01.89"	83°35'30.13"
SIGN (08/13)	2+256+481	298+227	29°49'00.81"	83°35'30.80"
SIGN (08/13)	2+256+376	298+323	29°49'01.76"	83°35'31.98"



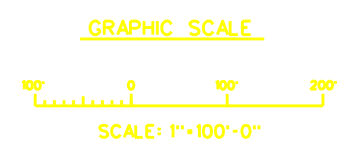
ABBREVIATIONS

RGE.	= RANGE
STA.	= STATION
AZ.	= AZIMUTH
P.I.	= POINT OF INTERSECTION
R	= RED
G	= GREEN

LEGEND

	CHANNEL CENTERLINE
	CONTOUR W/ ANNOTATION
	BENCHMARK
	LIGHTED BEACON
	GREEN DAYBEACON
	RED DAYBEACON
	RED LIGHTED BUOY
	GREEN LIGHTED BUOY
	CAN BUOY
	NUN BUOY
	NO WAKE SIGN
	TIDE STAFF

NOTES:
 1. REFER TO SURVEY 13-130.
 2. SEE 'SHEET 0001 THIS SET FOR ALL NOTES.



DEGREE SURVEYORS, INC.
2151 W. UNIVERSITY BLVD.
JACKSONVILLE, FLORIDA

DEPARTMENT OF THE ARMY
JACKSONVILLE DISTRICT, CORPS OF ENGINEERS
JACKSONVILLE, FLORIDA

KEATON BEACH, FLORIDA
**PROJECT CONDITION SURVEY
4- FOOT PROJECT
GULF OF MEXICO TO CUT - 1
PLAN**

Scale: AS SHOWN
Drawing no. **VH-104**