

US Army Corps of Engineers
Jacksonville District
SAFETY ON THIS JOB
DEPENDS ON YOU

| No. | Revised | Zone |
|-----|---------|------|
| | | |
| | | |
| | | |
| | | |
| | | |
| | | |
| | | |
| | | |
| | | |
| | | |

DESIGNEE SURVEYORS, INC.
2131 CORPORATE SQUARE BLVD.
JACKSONVILLE, FLORIDA

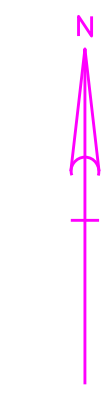
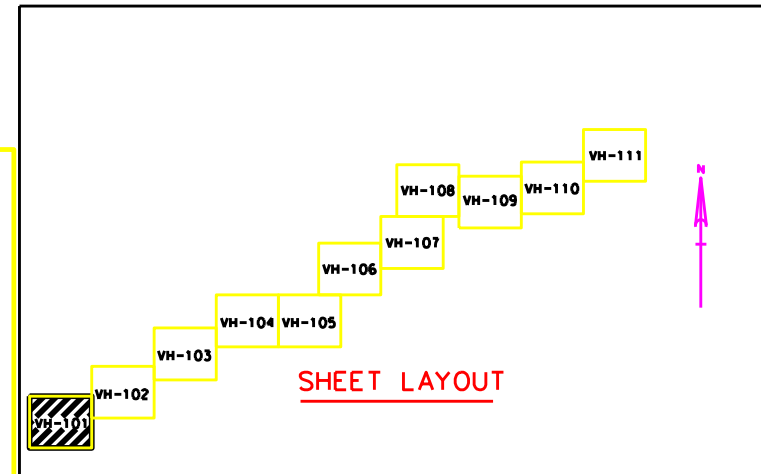
DEPARTMENT OF THE ARMY
JACKSONVILLE DISTRICT, CORPS OF ENGINEERS
JACKSONVILLE, FLORIDA

Checked By: GRN
Designed By: BDC
Drawn By: BDC
File No: W125A-VR-101-101
Date: 19 NOV 2013

13-125A-CHALDGN
13-125A-OPORDGN
13-125A-RGOLDGN
13-125A-VR-101-101

WITHLACOCHEE RIVER, FLORIDA
PROJECT CONDITION SURVEY
10-FOOT PROJECT
GULF OF MEXICO TO CUT 12 OF THE WITHLACOCHEE CHANNEL

Scale: AS SHOWN
Drawing no.
VH-101



ABBREVIATIONS

| | | |
|------|---|-----------------------|
| RGE. | = | RANGE |
| STA. | = | STATION |
| AZ. | = | AZIMUTH |
| P.I. | = | POINT OF INTERSECTION |
| R | = | RED |
| G | = | GREEN |

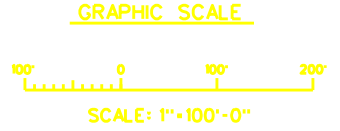
LEGEND

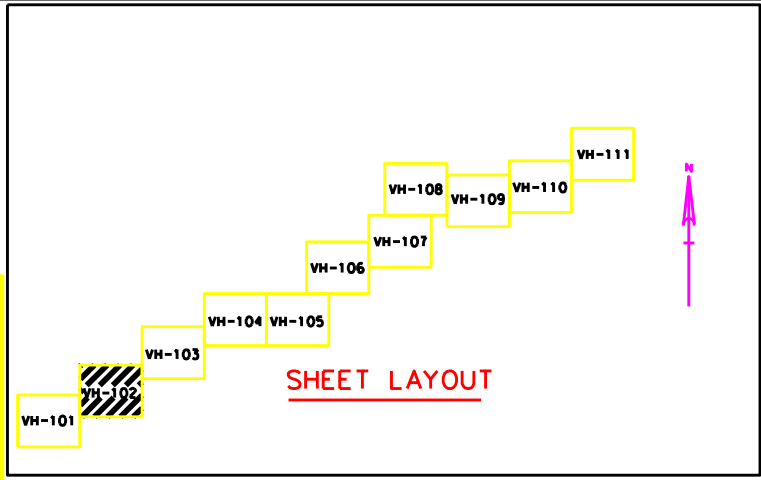
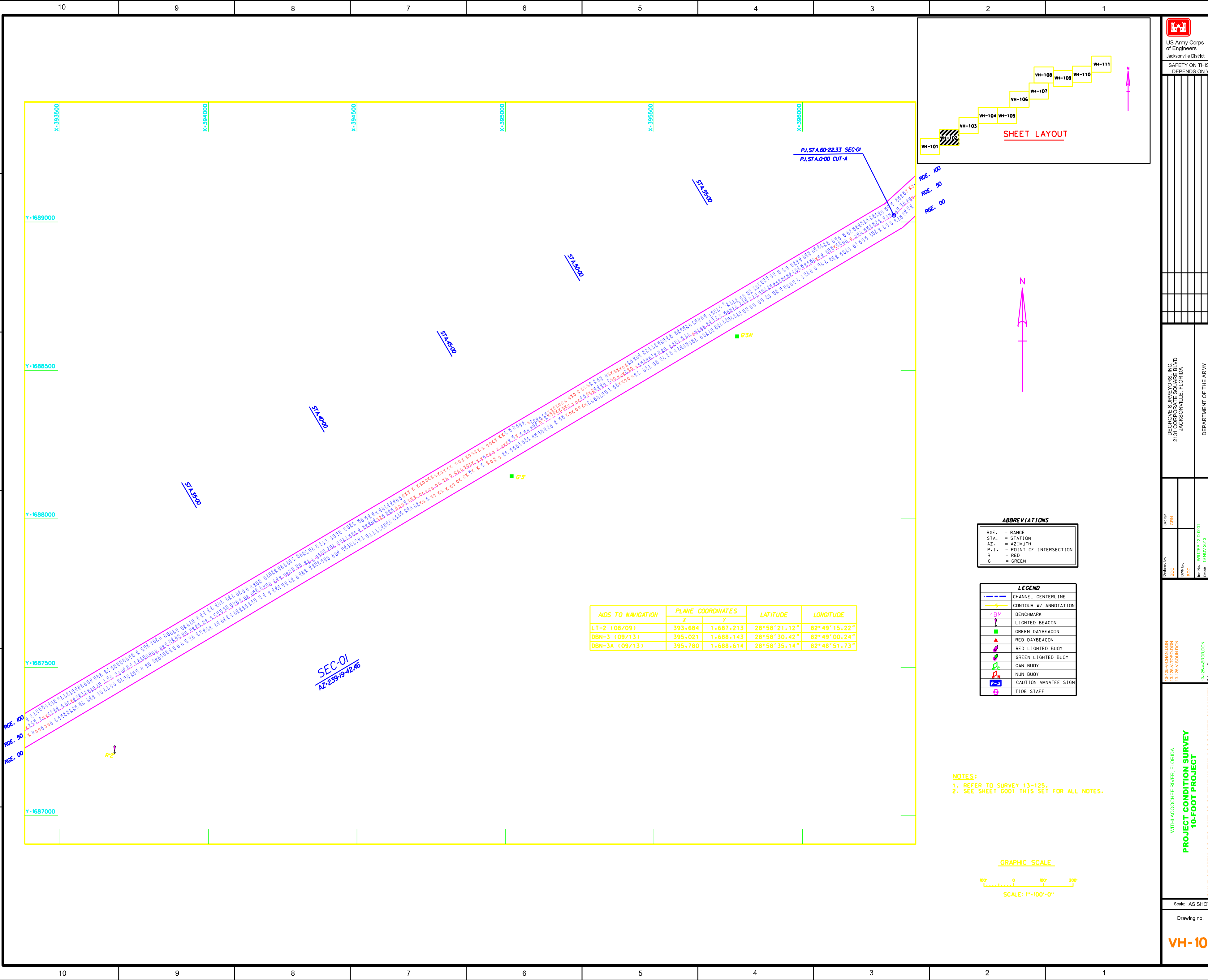
| | |
|-----|-----------------------|
| --- | CHANNEL CENTERLINE |
| --- | CONTOUR W/ ANNOTATION |
| +BM | BENCHMARK |
| ▲ | LIGHTED BEACON |
| ■ | GREEN DAYBEACON |
| ▲ | RED DAYBEACON |
| ▲ | RED LIGHTED BUOY |
| ▲ | GREEN LIGHTED BUOY |
| ■ | CAN BUOY |
| ■ | NUN BUOY |
| ■ | CAUTION MANATEE SIGN |
| ■ | TIDE STAFF |

AIDS TO NAVIGATION

| AIDS TO NAVIGATION | PLANE COORDINATES | | LATITUDE | LONGITUDE |
|--------------------|-------------------|-----------|--------------|--------------|
| | X | Y | | |
| LT-1 (08/09) | 391.178 | 1.686.938 | 28°58'08.33" | 82°49'43.32" |

NOTES:
1. REFER TO SURVEY 13-125.
2. SEE SHEET 0001 THIS SET FOR ALL NOTES.





| NO. | DATE | BY | DESCRIPTION |
|-----|------|----|-------------|
| | | | |
| | | | |
| | | | |
| | | | |
| | | | |
| | | | |
| | | | |
| | | | |
| | | | |
| | | | |

DEGREE SURVEYORS, INC.
 2131 CORPORATE SQUARE BLVD.
 JACKSONVILLE, FLORIDA

DEPARTMENT OF THE ARMY
 JACKSONVILLE DISTRICT, CORPS OF ENGINEERS
 JACKSONVILLE, FLORIDA

Drawn by: BDC
 Check by: GRN
 DWG No: W0125A-VH-102-001
 Date: 19 NOV 2013

13-125A-CHALDON
 13-125A-POPOLDON
 13-125A-POOLDON
 13-125A-ARBOLDON
 13-125A-VH-102-DON
Reference files: File name:

WITHLACOCHEE RIVER, FLORIDA
**PROJECT CONDITION SURVEY
 10-FOOT PROJECT**
 GULF OF MEXICO TO CUT 12 OF THE WITHLACOCHEE CHANNEL

Scale: AS SHOWN
 Drawing no.
VH-102

ABBREVIATIONS

| | | |
|------|---|-----------------------|
| RGE. | = | RANGE |
| STA. | = | STATION |
| AZ. | = | AZIMUTH |
| P.I. | = | POINT OF INTERSECTION |
| R | = | RED |
| G | = | GREEN |

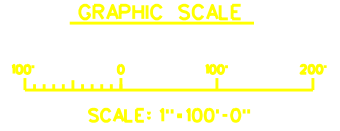
LEGEND

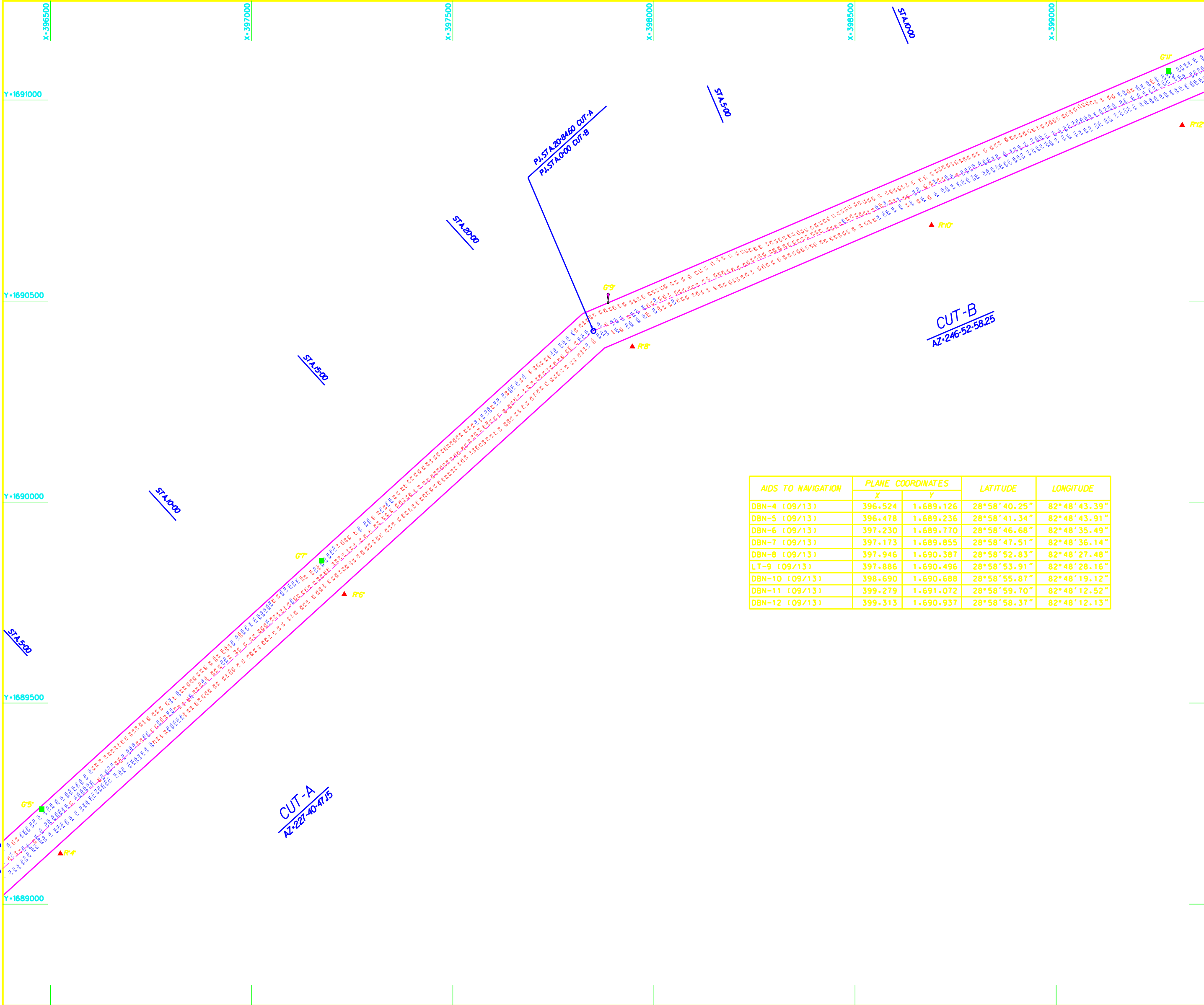
| | |
|--|-----------------------|
| | CHANNEL CENTERLINE |
| | CONTOUR W/ ANNOTATION |
| | BENCHMARK |
| | LIGHTED BUOY |
| | GREEN DAYBEACON |
| | RED DAYBEACON |
| | RED LIGHTED BUOY |
| | GREEN LIGHTED BUOY |
| | CAN BUOY |
| | NUN BUOY |
| | CAUTION MANATEE SIGN |
| | TIDE STAFF |

| AIDS TO NAVIGATION | PLANE COORDINATES | | LATITUDE | LONGITUDE |
|--------------------|-------------------|-----------|--------------|--------------|
| | X | Y | | |
| LT-2 (08/09) | 393.684 | 1.687.213 | 28°58'21.12" | 82°49'15.22" |
| DBN-3 (09/13) | 395.021 | 1.688.143 | 28°58'30.42" | 82°49'00.24" |
| DBN-3A (09/13) | 395.780 | 1.688.614 | 28°58'35.14" | 82°48'51.73" |

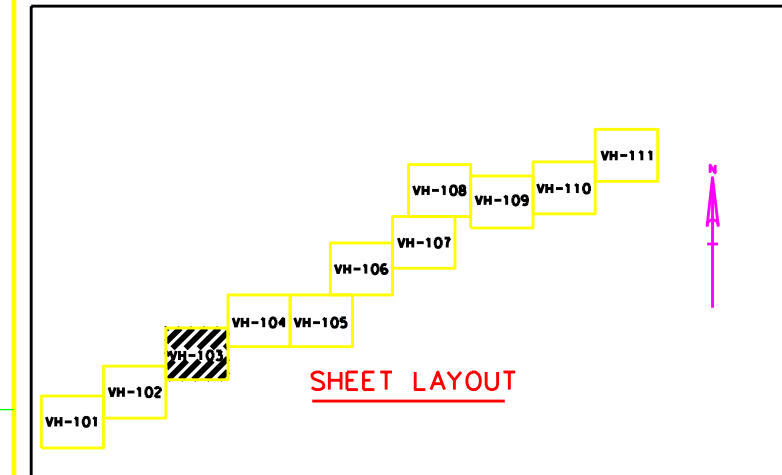
NOTES:

- REFER TO SURVEY 13-125.
- SEE SHEET 0001 THIS SET FOR ALL NOTES.





| AIDS TO NAVIGATION | PLANE COORDINATES | | LATITUDE | LONGITUDE |
|--------------------|-------------------|-----------|--------------|--------------|
| | X | Y | | |
| DBN-4 (09/13) | 396.524 | 1.689.126 | 28°58'40.25" | 82°48'43.39" |
| DBN-5 (09/13) | 396.478 | 1.689.236 | 28°58'41.34" | 82°48'43.91" |
| DBN-6 (09/13) | 397.230 | 1.689.770 | 28°58'46.68" | 82°48'35.49" |
| DBN-7 (09/13) | 397.173 | 1.689.855 | 28°58'47.51" | 82°48'36.14" |
| DBN-8 (09/13) | 397.946 | 1.690.387 | 28°58'52.83" | 82°48'27.48" |
| LT-9 (09/13) | 397.886 | 1.690.496 | 28°58'53.91" | 82°48'28.16" |
| DBN-10 (09/13) | 398.690 | 1.690.688 | 28°58'55.87" | 82°48'19.12" |
| DBN-11 (09/13) | 399.279 | 1.691.072 | 28°58'59.70" | 82°48'12.52" |
| DBN-12 (09/13) | 399.313 | 1.690.937 | 28°58'58.37" | 82°48'12.13" |



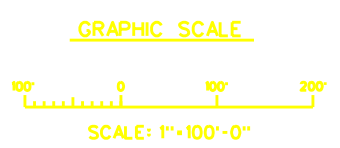
ABBREVIATIONS

| | |
|------|-------------------------|
| RGE. | = RANGE |
| STA. | = STATION |
| AZ. | = AZIMUTH |
| P.I. | = POINT OF INTERSECTION |
| R | = RED |
| G | = GREEN |

LEGEND

| | |
|--|-----------------------|
| | CHANNEL CENTERLINE |
| | CONTOUR W/ ANNOTATION |
| | BENCHMARK |
| | LIGHTED BEACON |
| | GREEN DAYBEACON |
| | RED DAYBEACON |
| | RED LIGHTED BUOY |
| | GREEN LIGHTED BUOY |
| | CAN BUOY |
| | NUN BUOY |
| | CAUTION MANATEE SIGN |
| | TIDE STAFF |

NOTES:
1. REFER TO SURVEY 13-125.
2. SEE SHEET 0001 THIS SET FOR ALL NOTES.



DEGROVE SURVEYORS, INC.
2131 CORPORATE SQUARE BLVD.
JACKSONVILLE, FLORIDA

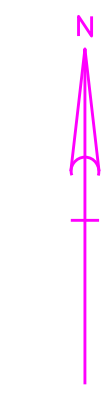
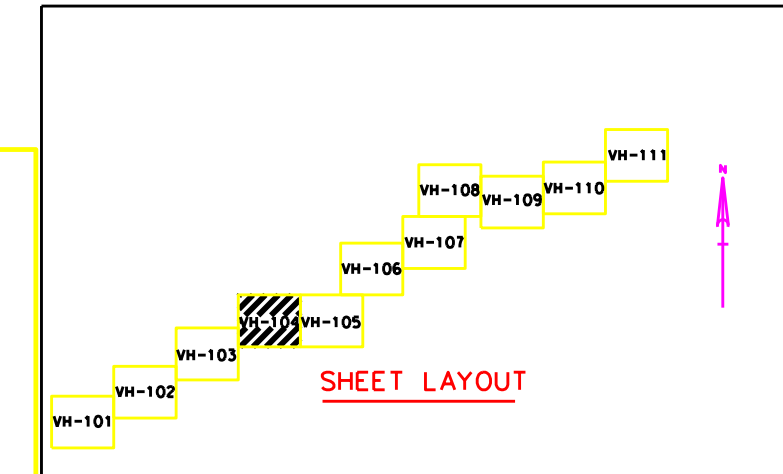
DEPARTMENT OF THE ARMY
JACKSONVILLE DISTRICT, CORPS OF ENGINEERS
JACKSONVILLE, FLORIDA

Designed by: BPC
Checked by: GRN
Drawn by: BPC
Project No.: W1325A-000001
Contract: 19 NOV 2013

13-125A-CHALDGN
13-125A-TOPOLDGN
13-125A-FGOLDGN
13-125A-ARBOLDGN
13-125A-VH-103OLDGN
Reference files:
BPC name:

WITHLACOCHEE RIVER, FLORIDA
**PROJECT CONDITION SURVEY
10-FOOT PROJECT**
GULF OF MEXICO TO CUT 12 OF THE WITHLACOCHEE CHANNEL

Scale: AS SHOWN
Drawing no.
VH-103



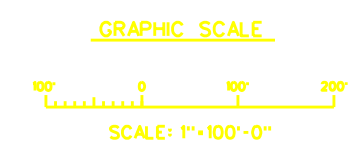
ABBREVIATIONS

| | |
|------|-------------------------|
| RGE. | = RANGE |
| STA. | = STATION |
| AZ. | = AZIMUTH |
| P.I. | = POINT OF INTERSECTION |
| R | = RED |
| G | = GREEN |

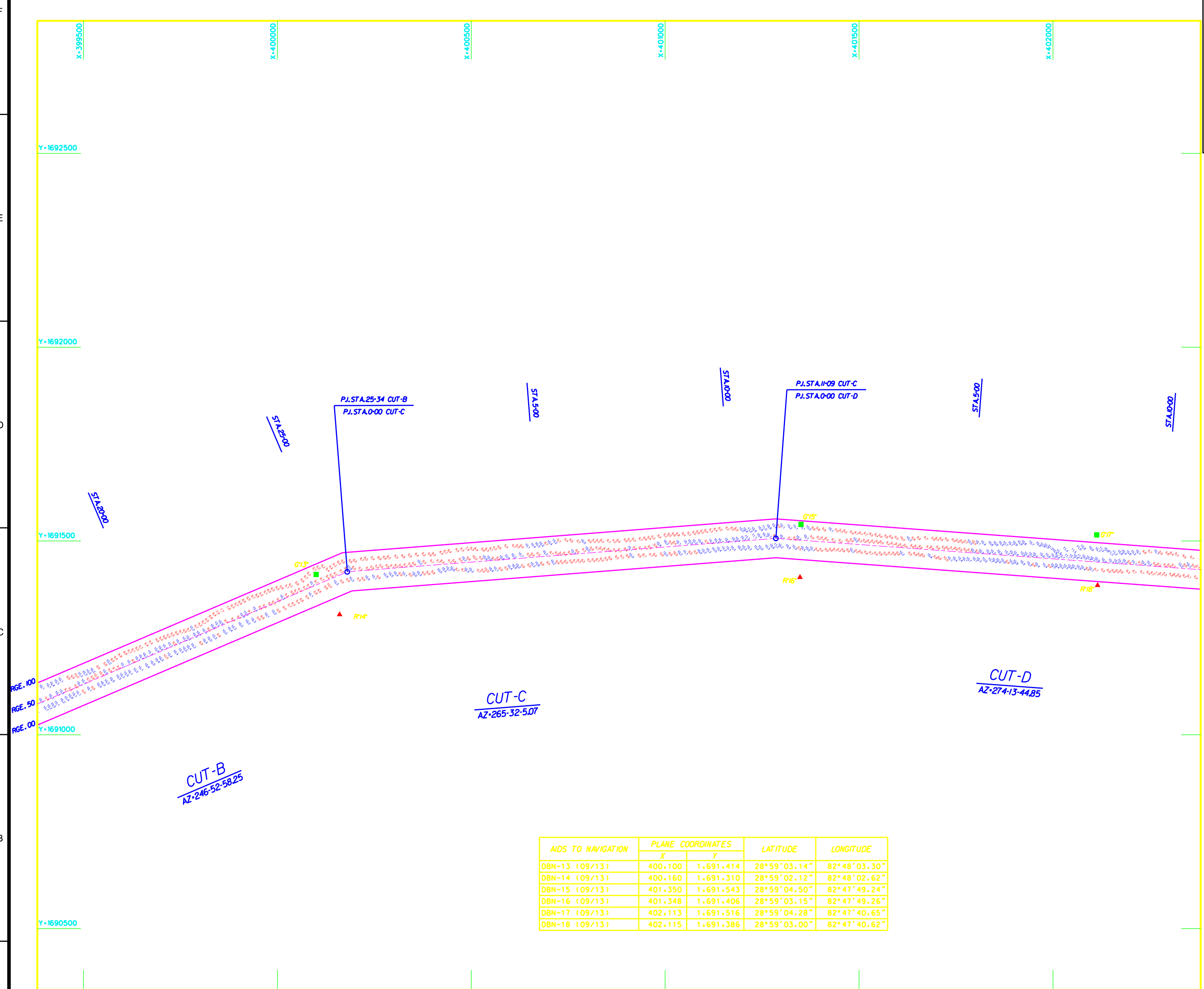
LEGEND

| | |
|--|-----------------------|
| | CHANNEL CENTER LINE |
| | CONTOUR W/ ANNOTATION |
| | BENCHMARK |
| | LIGHTED BUOY |
| | RED DAYBEACON |
| | RED LIGHTED BUOY |
| | GREEN LIGHTED BUOY |
| | CAN BUOY |
| | NUN BUOY |
| | CAUTION MANATEE SIGN |
| | TIDE STAFF |

NOTES:
1. REFER TO SURVEY 13-125.
2. SEE SHEET 0001 THIS SET FOR ALL NOTES.



| AIDS TO NAVIGATION | PLANE COORDINATES | | LATITUDE | LONGITUDE |
|--------------------|-------------------|-----------|--------------|--------------|
| | X | Y | | |
| DBN-13 (09/13) | 400.100 | 1.691.414 | 28°59'03.14" | 82°48'03.30" |
| DBN-14 (09/13) | 400.160 | 1.691.310 | 28°59'02.12" | 82°48'02.62" |
| DBN-15 (09/13) | 401.350 | 1.691.543 | 28°59'04.50" | 82°47'49.24" |
| DBN-16 (09/13) | 401.348 | 1.691.406 | 28°59'03.15" | 82°47'49.26" |
| DBN-17 (09/13) | 402.113 | 1.691.516 | 28°59'04.28" | 82°47'40.65" |
| DBN-18 (09/13) | 402.115 | 1.691.366 | 28°59'03.00" | 82°47'40.62" |



DESIGNEE SURVEYORS, INC.
2131 CORPORATE SQUARE BLVD.
JACKSONVILLE, FLORIDA

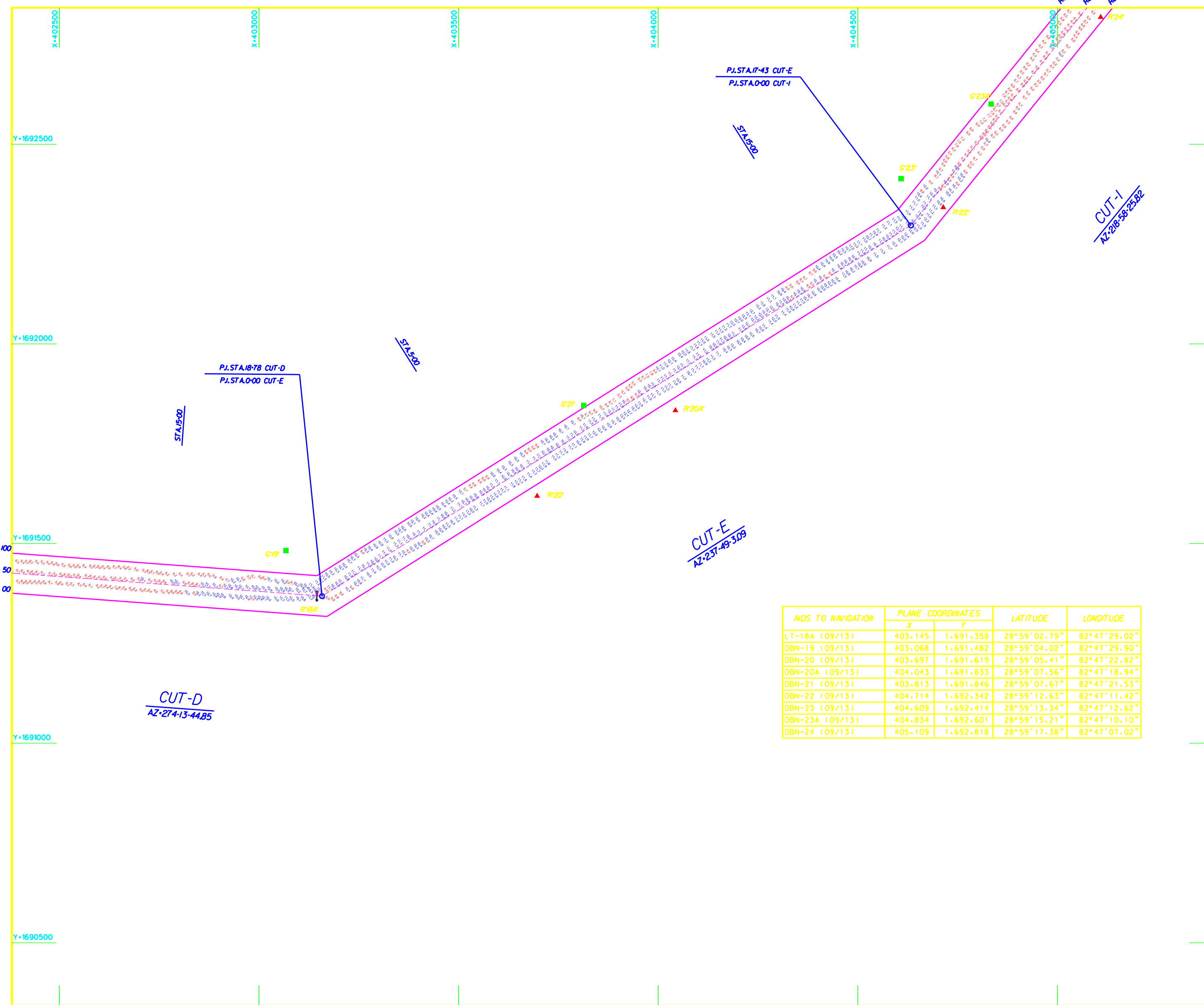
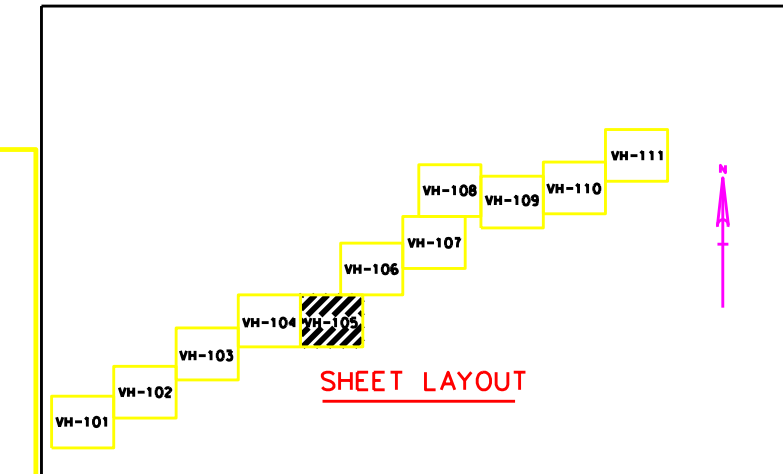
DEPARTMENT OF THE ARMY
JACKSONVILLE DISTRICT, CORPS OF ENGINEERS
JACKSONVILLE, FLORIDA

Checked by: GRN
Designed by: BPC
Drawn by: BPC
Project No.: W1325A-00-0001
Date: 19 NOV 2013

13-125A-00-0001
13-125A-00-0001
13-125A-00-0001
Reference files:
13-125A-00-0001

WITHLACOCHEE RIVER, FLORIDA
**PROJECT CONDITION SURVEY
10-FOOT PROJECT**
GULF OF MEXICO TO CUT 12 OF THE WITHLACOCHEE CHANNEL

Scale: AS SHOWN
Drawing no.
VH-104



| AIDS TO NAVIGATION | PLANE COORDINATES | | LATITUDE | LONGITUDE |
|--------------------|-------------------|-----------|--------------|--------------|
| | X | Y | | |
| LT-18A (09/13) | 403.145 | 1.691.358 | 28°59'02.79" | 82°47'29.02" |
| DBN-19 (09/13) | 403.068 | 1.691.482 | 28°59'04.02" | 82°47'29.90" |
| DBN-20 (09/13) | 403.697 | 1.691.619 | 28°59'05.41" | 82°47'22.82" |
| DBN-20A (09/13) | 404.043 | 1.691.833 | 28°59'07.56" | 82°47'18.94" |
| DBN-21 (09/13) | 403.813 | 1.691.846 | 28°59'07.67" | 82°47'21.53" |
| DBN-22 (09/13) | 404.714 | 1.692.342 | 28°59'12.63" | 82°47'11.42" |
| DBN-23 (09/13) | 404.609 | 1.692.414 | 28°59'13.34" | 82°47'12.62" |
| DBN-23A (09/13) | 404.834 | 1.692.601 | 28°59'15.21" | 82°47'10.10" |
| DBN-24 (09/13) | 405.109 | 1.692.818 | 28°59'17.38" | 82°47'07.02" |

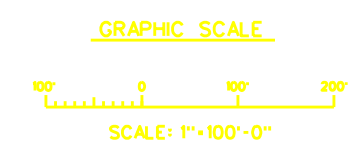
ABBREVIATIONS

| | |
|------|-------------------------|
| RGE. | = RANGE |
| STA. | = STATION |
| AZ. | = AZIMUTH |
| P.I. | = POINT OF INTERSECTION |
| R | = RED |
| G | = GREEN |

LEGEND

| | |
|--|-----------------------|
| | CHANNEL CENTER LINE |
| | CONTOUR W/ ANNOTATION |
| | BENCHMARK |
| | LIGHTED BEACON |
| | GREEN DAYBEACON |
| | RED DAYBEACON |
| | RED LIGHTED BUOY |
| | GREEN LIGHTED BUOY |
| | CAN BUOY |
| | NUN BUOY |
| | CAUTION MANATEE SIGN |
| | TIDE STAFF |

NOTES:
1. REFER TO SURVEY 13-125.
2. SEE SHEET 0001 THIS SET FOR ALL NOTES.



DEGROVE SURVEYORS, INC.
2131 CORPORATE SQUARE BLVD.
JACKSONVILLE, FLORIDA

DEPARTMENT OF THE ARMY
JACKSONVILLE DISTRICT, CORPS OF ENGINEERS
JACKSONVILLE, FLORIDA

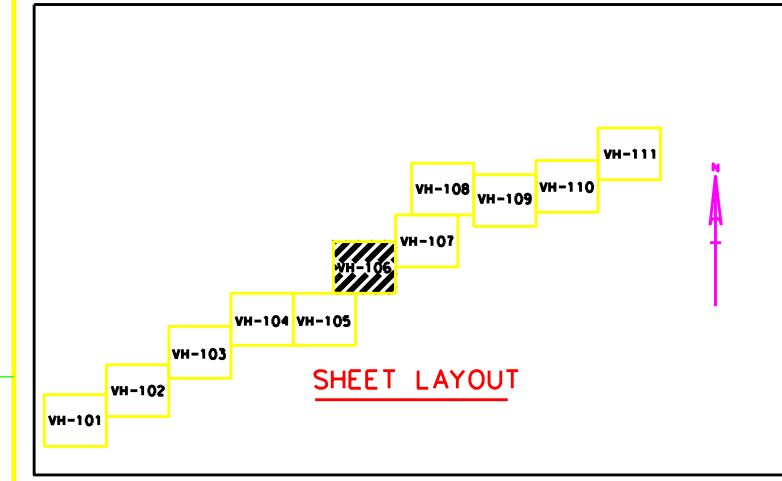
Designed by: BDC
Checked by: GRN
Drawn by: BDC
File No: W0125A-105-001
Date: 19 NOV 2013

13-125A-CHALDON
13-125A-FORLON
13-125A-FORLON
13-125A-ARBOLDON
13-125A-VH-105-DGN

WITHLACOCHEE RIVER, FLORIDA
**PROJECT CONDITION SURVEY
10-FOOT PROJECT**
GULF OF MEXICO TO CUT 12 OF THE WITHLACOCHEE CHANNEL

Scale: AS SHOWN
Drawing no.
VH-105

| AIDS TO NAVIGATION | PLANE COORDINATES | | LATITUDE | LONGITUDE |
|--------------------|-------------------|-----------|--------------|--------------|
| | X | Y | | |
| DBN-25 (09/13) | 405.622 | 1,693,592 | 28°59'25.07" | 82°47'01.30" |
| DBN-26 (09/13) | 405.745 | 1,693,549 | 28°59'24.66" | 82°46'59.91" |
| DBN-27 (09/13) | 405.880 | 1,693,955 | 28°59'28.68" | 82°46'58.42" |
| DBN-28 (09/13) | 405.990 | 1,693,915 | 28°59'28.30" | 82°46'57.18" |
| DBN-29 (09/13) | 406.594 | 1,694,556 | 28°59'34.68" | 82°46'50.43" |
| DBN-30 (09/13) | 407.169 | 1,694,800 | 28°59'37.13" | 82°46'43.97" |



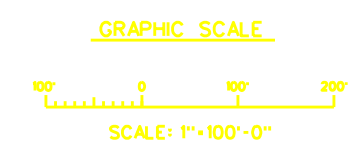
ABBREVIATIONS

| | |
|-------|-------------------------|
| RGE. | = RANGE |
| STA. | = STATION |
| AZ. | = AZIMUTH |
| P. I. | = POINT OF INTERSECTION |
| R | = RED |
| G | = GREEN |

LEGEND

| | |
|--|-----------------------|
| | CHANNEL CENTER LINE |
| | CONTOUR W/ ANNOTATION |
| | BENCHMARK |
| | LIGHTED BEACON |
| | GREEN DAYBEACON |
| | RED DAYBEACON |
| | RED LIGHTED BUOY |
| | GREEN LIGHTED BUOY |
| | CAN BUOY |
| | NUN BUOY |
| | CAUTION MANATEE SIGN |
| | TIDE STAFF |

NOTES:
1. REFER TO SURVEY 13-125.
2. SEE SHEET 0001 THIS SET FOR ALL NOTES.

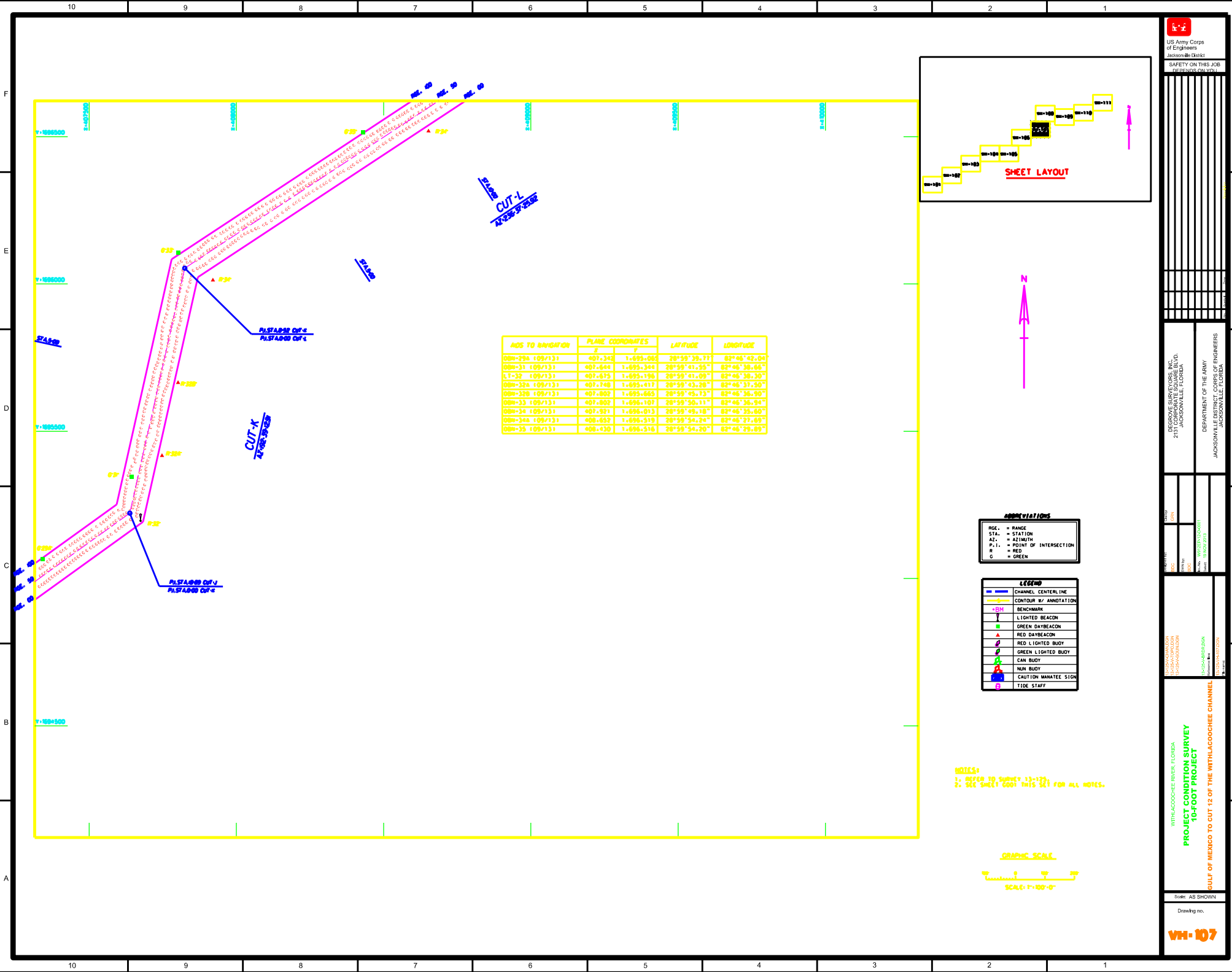


DEGREVE SURVEYORS, INC.
2131 CORPORATE SQUARE BLD.
JACKSONVILLE, FLORIDA

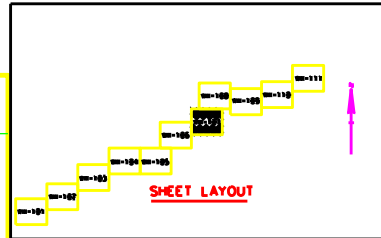
DEPARTMENT OF THE ARMY
JACKSONVILLE DISTRICT, CORPS OF ENGINEERS
JACKSONVILLE, FLORIDA

WITHLACOCHEE RIVER, FLORIDA
**PROJECT CONDITION SURVEY
10-FOOT PROJECT**
GULF OF MEXICO TO CUT 12 OF THE WITHLACOCHEE CHANNEL

Scale: AS SHOWN
Drawing no.
VH-106



| AIDS TO NAVIGATION | PLANE COORDINATES | | LATITUDE | LONGITUDE |
|--------------------|-------------------|-----------|--------------|--------------|
| | X | Y | | |
| 00m-39a 109/131 | 407.340 | 1,695.006 | 28°59'39.77" | 82°46'42.04" |
| 00m-31 109/131 | 407.604 | 1,695.304 | 28°59'41.55" | 82°46'38.65" |
| LT-32 109/131 | 407.675 | 1,695.196 | 28°59'41.09" | 82°46'38.30" |
| 00m-32a 109/131 | 407.748 | 1,695.417 | 28°59'43.26" | 82°46'31.50" |
| 00m-32b 109/131 | 407.802 | 1,695.665 | 28°59'45.73" | 82°46'36.90" |
| 00m-33 109/131 | 407.802 | 1,696.107 | 28°59'50.11" | 82°46'36.54" |
| 00m-34 109/131 | 407.921 | 1,696.013 | 28°59'49.16" | 82°46'35.60" |
| 00m-34a 109/131 | 408.652 | 1,696.519 | 28°59'54.24" | 82°46'27.69" |
| 00m-35 109/131 | 408.130 | 1,696.516 | 28°59'54.20" | 82°46'29.69" |



ABBREVIATIONS

| | |
|------|-------------------------|
| RGL. | = RANGE |
| STA. | = STATION |
| AZ. | = AZIMUTH |
| P.I. | = POINT OF INTERSECTION |
| R | = RED |
| G | = GREEN |

LEGEND

| | |
|--|-----------------------|
| | CHANNEL CENTERLINE |
| | CONTOUR BY ANNOTATION |
| | BENCHMARK |
| | LIGHTED BEACON |
| | GREEN DAYBEACON |
| | RED DAYBEACON |
| | RED LIGHTED BUOY |
| | GREEN LIGHTED BUOY |
| | CAN BUOY |
| | NUN BUOY |
| | CAUTION MANATEE SIGN |
| | TIDE STAFF |

- NOTES:**
1. REFER TO SURVEY 13-123
 2. SEE SHEET 1001 THIS SET FOR ALL NOTES.



US Army Corps of Engineers
Jacksonville District
SAFETY ON THIS JOB
REGARDS ON YOU!

PROJECT ENGINEER: JACOB W. GIBSON
PROJECT MANAGER: JACOB W. GIBSON
PROJECT SUPERVISOR: JACOB W. GIBSON
PROJECT ASSISTANT: JACOB W. GIBSON

PROJECT LOCATION:
WITHLAGOOCHEE RIVER, FLORIDA
2131 CORPORATE SQUARE BLVD.
JACKSONVILLE, FLORIDA

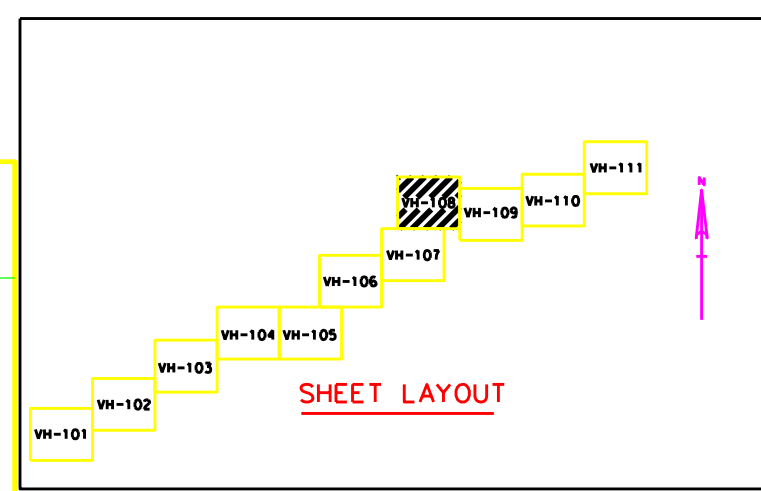
DEPARTMENT OF THE ARMY
JACKSONVILLE DISTRICT, CORPS OF ENGINEERS
JACKSONVILLE, FLORIDA

DATE: 10/20/2013
DRAWN BY: JACOB W. GIBSON
CHECKED BY: JACOB W. GIBSON

PROJECT TITLE:
WITHLAGOOCHEE RIVER, FLORIDA
PROJECT CONDITION SURVEY
10-FOOT PROJECT

BULF OF MEXICO TO CUT 15 OF THE WITHLAGOOCHEE CHANNEL

Scale: AS SHOWN
Drawing no. **VH-107**



| AIDS TO NAVIGATION | PLANE COORDINATES | | LATITUDE | LONGITUDE |
|--------------------|-------------------|-----------|--------------|--------------|
| | X | Y | | |
| DBN-36 (09/13) | 409.270 | 1.696.934 | 28°59'58.40" | 82°46'20.47" |
| DBN-36A (09/13) | 409.767 | 1.697.229 | 29°00'01.35" | 82°46'14.89" |
| DBN-37 (09/13) | 409.698 | 1.697.324 | 29°00'02.29" | 82°46'15.68" |
| DBN-38 (09/13) | 410.254 | 1.697.351 | 29°00'02.58" | 82°46'09.42" |
| DBN-39 (09/13) | 410.421 | 1.697.437 | 29°00'03.45" | 82°46'07.55" |

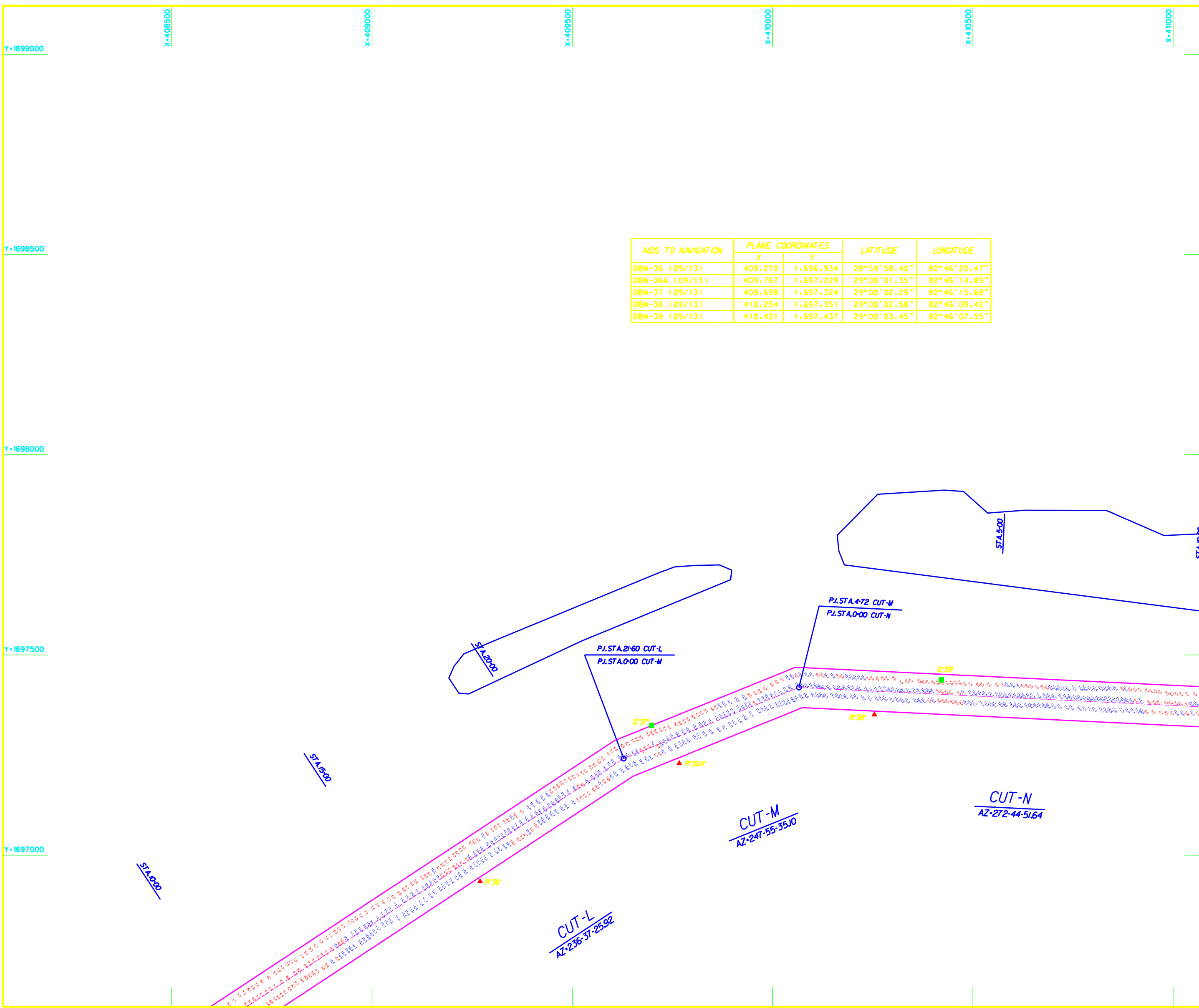
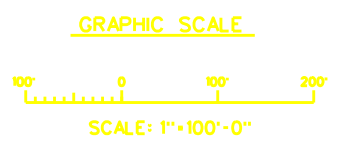
ABBREVIATIONS

| | | |
|------|---|-----------------------|
| RGE. | = | RANGE |
| STA. | = | STATION |
| AZ. | = | AZIMUTH |
| P.I. | = | POINT OF INTERSECTION |
| R | = | RED |
| G | = | GREEN |

LEGEND

| | |
|--|-----------------------|
| | CHANNEL CENTER LINE |
| | CONTOUR W/ ANNOTATION |
| | BENCHMARK |
| | LIGHTED BEACON |
| | GREEN DAYBEACON |
| | RED DAYBEACON |
| | RED LIGHTED BUDY |
| | GREEN LIGHTED BUDY |
| | CAN BUDY |
| | NUN BUDY |
| | CAUTION MANATEE SIGN |
| | TIDE STAFF |

NOTES:
1. REFER TO SURVEY 13-125.
2. SEE SHEET 0001 THIS SET FOR ALL NOTES.

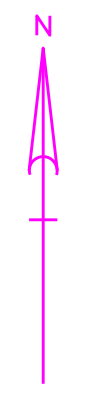
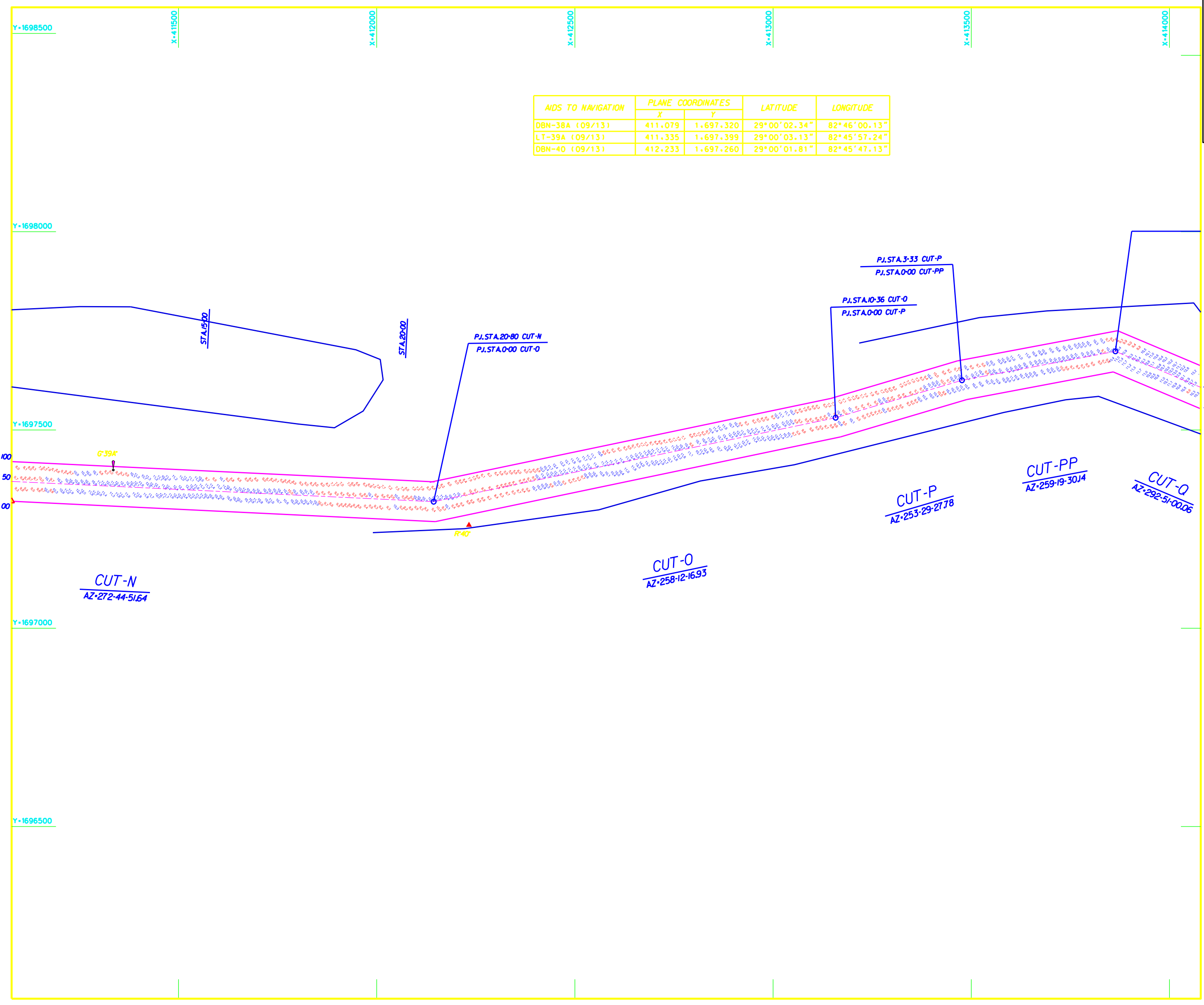
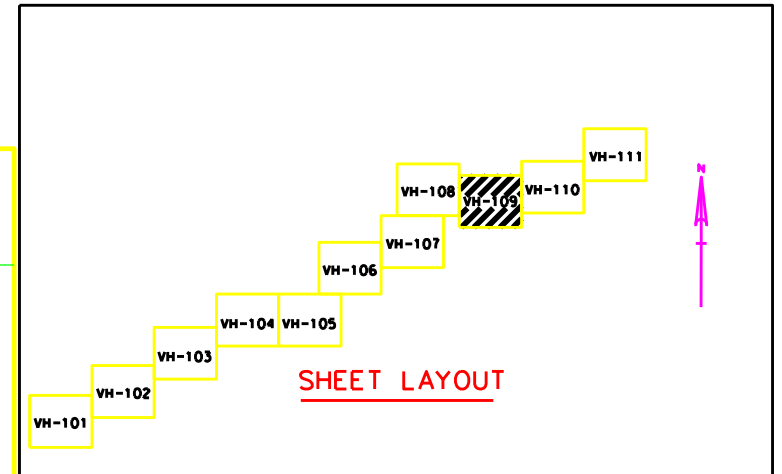


F
E
D
C
B
A

10 9 8 7 6 5 4 3 2 1

10 9 8 7 6 5 4 3 2 1

| AIDS TO NAVIGATION | PLANE COORDINATES | | LATITUDE | LONGITUDE |
|--------------------|-------------------|-----------|--------------|--------------|
| | X | Y | | |
| DBN-38A (09/13) | 411.079 | 1.697.320 | 29°00'02.34" | 82°46'00.13" |
| LT-39A (09/13) | 411.335 | 1.697.399 | 29°00'03.13" | 82°45'57.24" |
| DBN-40 (09/13) | 412.233 | 1.697.260 | 29°00'01.81" | 82°45'47.13" |



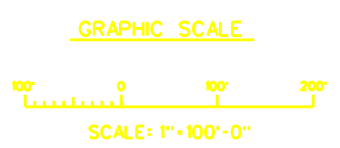
ABBREVIATIONS

| | | |
|------|---|-----------------------|
| RGE. | = | RANGE |
| STA. | = | STATION |
| AZ. | = | AZIMUTH |
| P.I. | = | POINT OF INTERSECTION |
| R | = | RED |
| G | = | GREEN |

LEGEND

| | |
|--|-----------------------|
| | CHANNEL CENTER LINE |
| | CONTOUR W/ ANNOTATION |
| | BENCHMARK |
| | LIGHTED BEACON |
| | GREEN DAYBEACON |
| | RED DAYBEACON |
| | RED LIGHTED BUOY |
| | GREEN LIGHTED BUOY |
| | CAN BUOY |
| | NUN BUOY |
| | CAUTION MANATEE SIGN |
| | TIDE STAFF |

NOTES:
 1. REFER TO SURVEY 13-125.
 2. SEE SHEET 0001 THIS SET FOR ALL NOTES.



DESIGNEE: SURVEYORS, INC.
 2131 CORPORATE SQUARE BLVD.
 JACKSONVILLE, FLORIDA

DEPARTMENT OF THE ARMY
 JACKSONVILLE DISTRICT, CORPS OF ENGINEERS
 JACKSONVILLE, FLORIDA

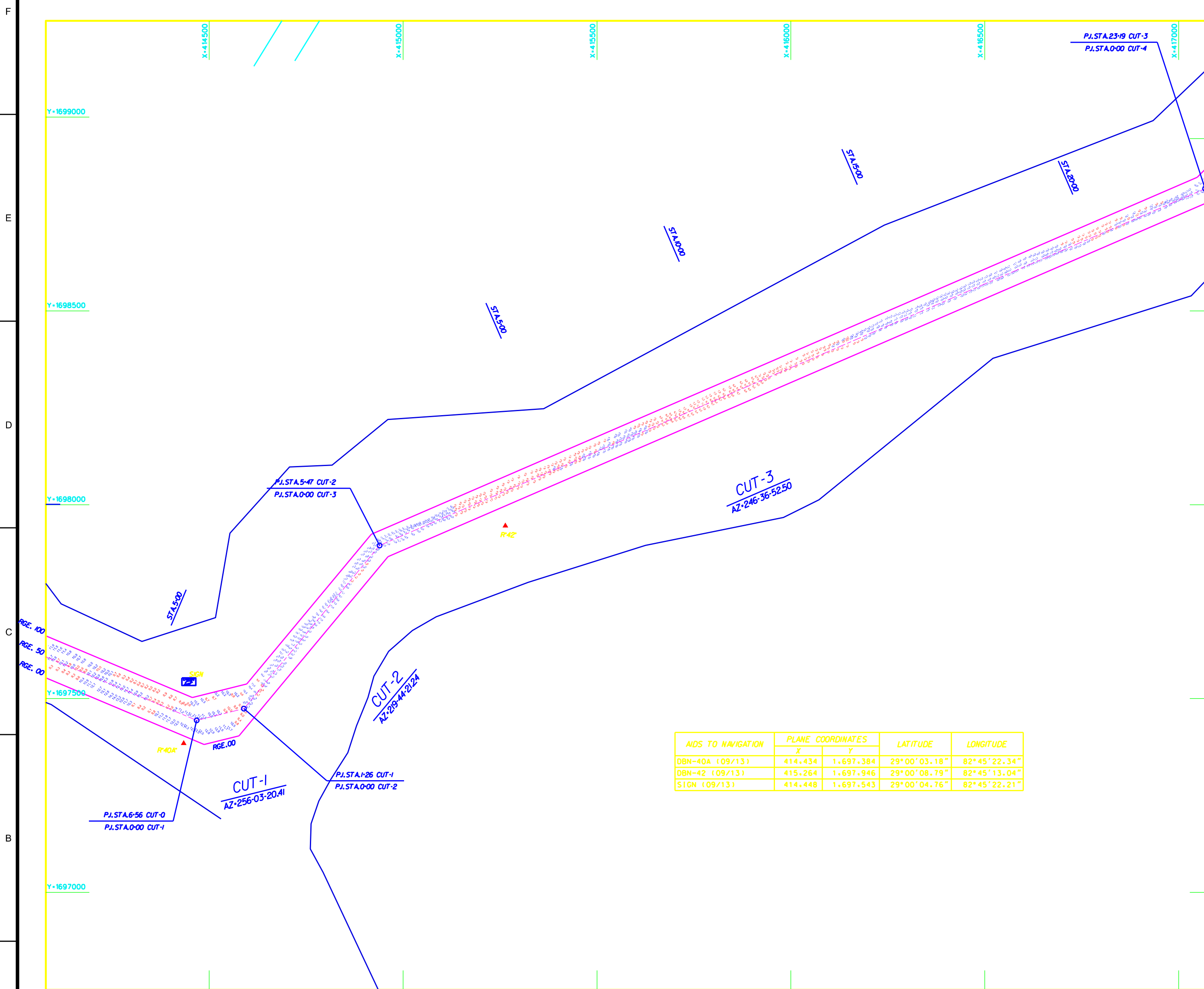
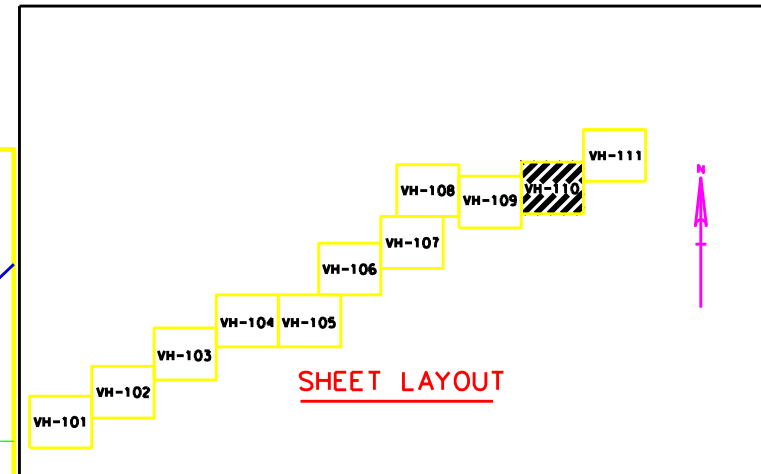
Checked by: GRN

Designed by: BDC
 Drawn by: BDC
 Date: 19 NOV 2013

WITHLACOCHEE RIVER, FLORIDA
**PROJECT CONDITION SURVEY
 10-FOOT PROJECT**
 GULF OF MEXICO TO CUT 12 OF THE WITHLACOCHEE CHANNEL

Scale: AS SHOWN

Drawing no.
VH-109



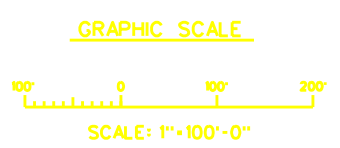
ABBREVIATIONS

| | |
|------|-------------------------|
| RGE. | = RANGE |
| STA. | = STATION |
| AZ. | = AZIMUTH |
| P.I. | = POINT OF INTERSECTION |
| R | = RED |
| G | = GREEN |

LEGEND

| | |
|--|-----------------------|
| | CHANNEL CENTER LINE |
| | CONTOUR W/ ANNOTATION |
| | BENCHMARK |
| | LIGHTED BEACON |
| | GREEN DAYBEACON |
| | RED DAYBEACON |
| | RED LIGHTED BUOY |
| | GREEN LIGHTED BUOY |
| | CAN BUOY |
| | NUN BUOY |
| | CAUTION MANATEE SIGN |
| | TIDE STAFF |

NOTES:
1. REFER TO SURVEY 13-125.
2. SEE SHEET 0001 THIS SET FOR ALL NOTES.



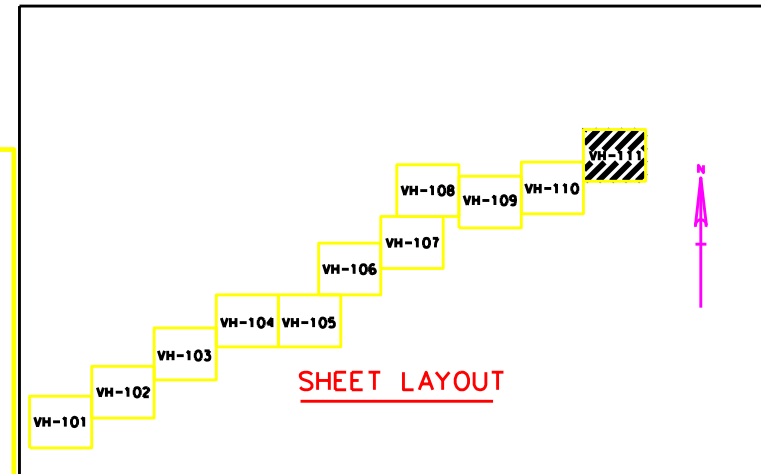
DEGROVE SURVEYORS, INC.
2131 CORPORATE SQUARE BLVD.
JACKSONVILLE, FLORIDA

DEPARTMENT OF THE ARMY
JACKSONVILLE DISTRICT, CORPS OF ENGINEERS
JACKSONVILLE, FLORIDA

Designed by: BDC
Checked by: GRN
Drawn by: BDC
File No.: W9135A-00-0001
Date: 19 NOV 2013

13-125A-CHALDON
13-125A-FORDON
13-125A-ROLDON
13-125A-AROLDON
13-125A-WH110DON
Reference files:
File name:

WITHLACOCHEE RIVER, FLORIDA
**PROJECT CONDITION SURVEY
10-FOOT PROJECT**
GULF OF MEXICO TO CUT 12 OF THE WITHLACOCHEE CHANNEL



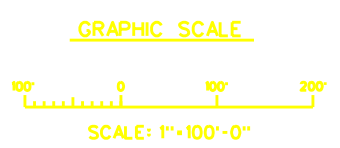
ABBREVIATIONS

| | | |
|------|---|-----------------------|
| RGE. | = | RANGE |
| STA. | = | STATION |
| AZ. | = | AZIMUTH |
| P.I. | = | POINT OF INTERSECTION |
| R | = | RED |
| G | = | GREEN |

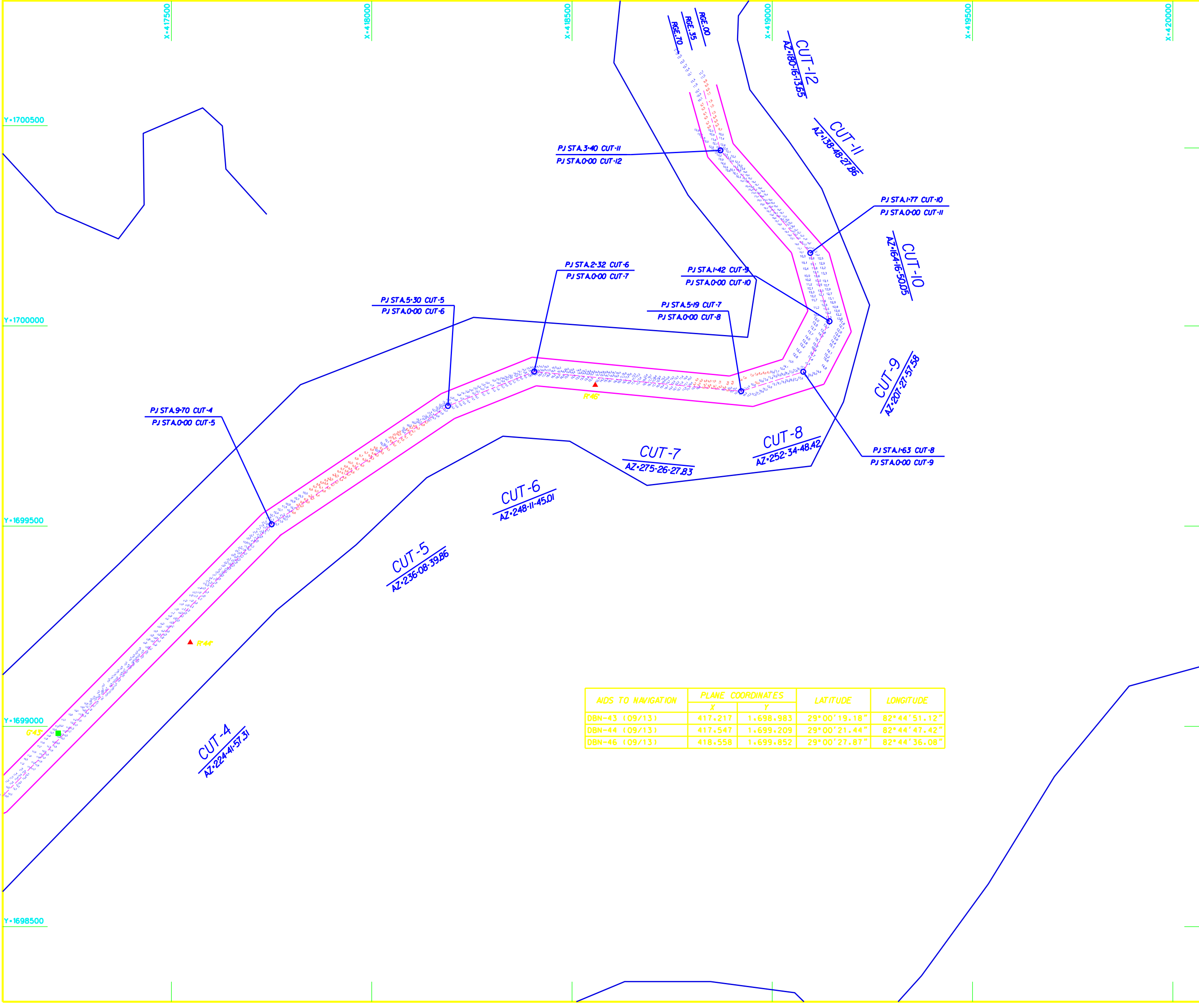
LEGEND

| | |
|--|-----------------------|
| | CHANNEL CENTER LINE |
| | CONTOUR W/ ANNOTATION |
| | BENCHMARK |
| | LIGHTED BEACON |
| | GREEN DAYBEACON |
| | RED DAYBEACON |
| | RED LIGHTED BUOY |
| | GREEN LIGHTED BUOY |
| | CAN BUOY |
| | NUN BUOY |
| | CAUTION MANATEE SIGN |
| | TIDE STAFF |

NOTES:
1. REFER TO SURVEY 13-125.
2. SEE SHEET 0001 THIS SET FOR ALL NOTES.



| AIDS TO NAVIGATION | PLANE COORDINATES | | LATITUDE | LONGITUDE |
|--------------------|-------------------|-----------|--------------|--------------|
| | X | Y | | |
| DBN-43 (09/13) | 417,217 | 1,698,983 | 29°00'19.18" | 82°44'51.12" |
| DBN-44 (09/13) | 417,547 | 1,699,209 | 29°00'21.44" | 82°44'47.42" |
| DBN-46 (09/13) | 418,558 | 1,699,852 | 29°00'27.87" | 82°44'36.08" |



DEGROVE SURVEYORS, INC.
2131 CORPORATE SQUARE BLVD.
JACKSONVILLE, FLORIDA

DEPARTMENT OF THE ARMY
JACKSONVILLE DISTRICT, CORPS OF ENGINEERS
JACKSONVILLE, FLORIDA

Checked by: GRN
Designed by: BDC
Drawn by: BDC
File No: W0125A-000001
Date: 19 NOV 2013

13-125A-000001
13-125A-000002
13-125A-000003
13-125A-000004
13-125A-000005
13-125A-000006
13-125A-000007
13-125A-000008
13-125A-000009
13-125A-000010
13-125A-000011
13-125A-000012

WITHLACOCHEE RIVER, FLORIDA
**PROJECT CONDITION SURVEY
10-FOOT PROJECT**
GULF OF MEXICO TO CUT 12 OF THE WITHLACOCHEE CHANNEL