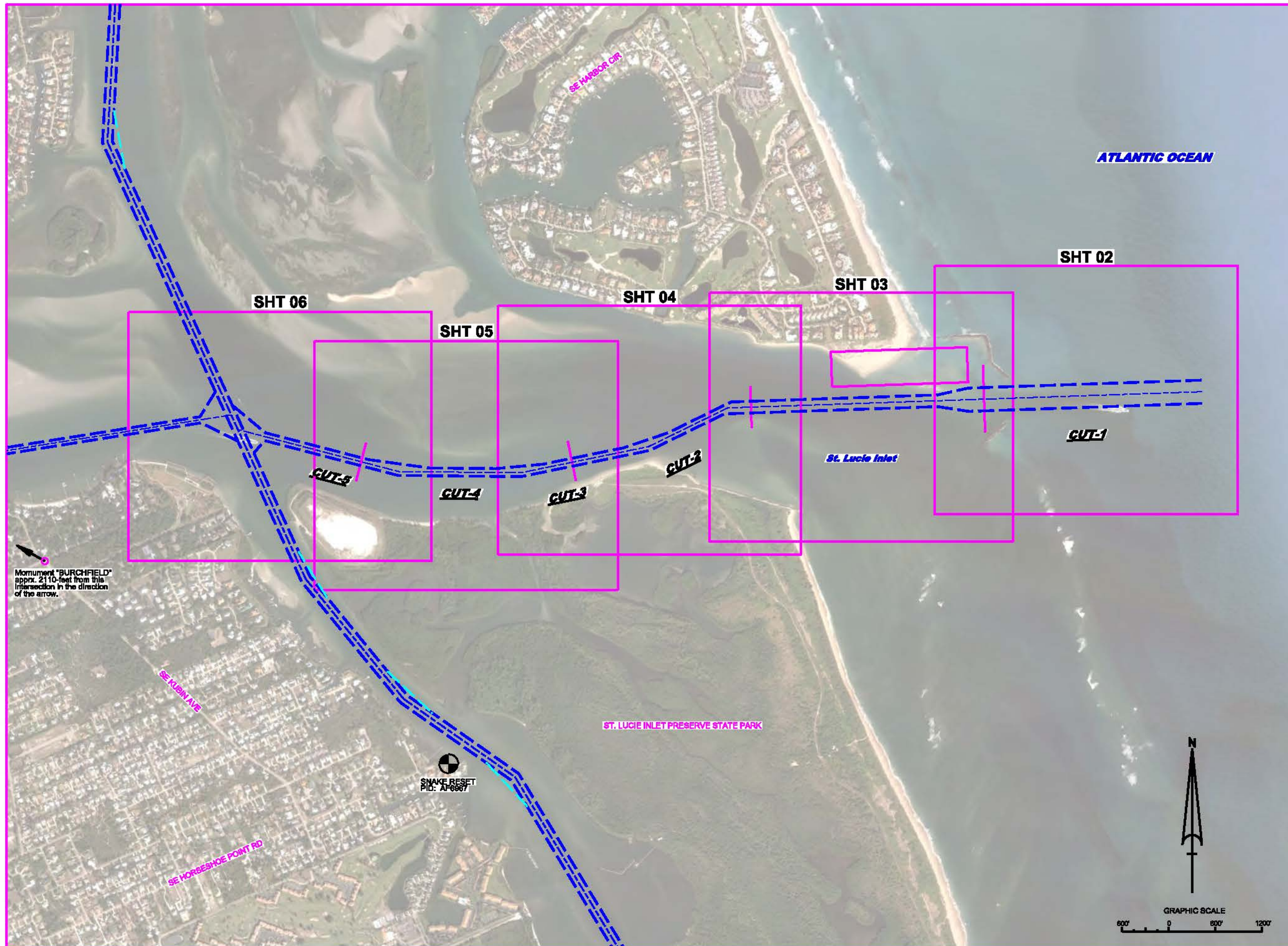




ST. LUCIE INLET MARTIN COUNTY, FLORIDA HYDROGRAPHIC EXAM SURVEY FY13 7, 10 & 16-FOOT PROJECT



SURVEY NOTES

- REFER TO SURVEY NO. 13-096.
- SOUNDINGS ARE IN FEET AND TENTHS AND REFER TO NOAA'S REPORTED MEAN LOWER LOW WATER (MLLW) OF THE 1983-2001 TIDAL EPOCH.
- TIDAL REDUCTIONS WERE OBTAINED UTILIZING A REAL-TIME KINEMATIC (RTK) GPS AND REFERENCED TO MLLW UTILIZING A KINEMATIC TIDE DATUM (KTD) MODEL. KTD FILE NAME IS: "INDIANRIVER-STLUCIE-MARTIN-06JULY2010.KTD".
- ALL ELEVATIONS ARE BELOW THE CHART DATUM UNLESS PRECEDED BY A (+) SIGN.
- PLANE COORDINATES ARE BASED ON THE TRANSVERSE MERCATOR PROJECTION FOR THE EAST ZONE OF FLORIDA AND REFERENCED TO NORTH AMERICAN DATUM OF 1983 (NAD83).
- ALL AZIMUTHS ARE GRID; RECKONED CLOCKWISE FROM SOUTH.
- ALL STATIONING REFERS TO THE CENTERLINE OF THE CHANNEL.
- THIS SURVEY WAS PERFORMED USING REAL-TIME KINEMATIC GPS POSITIONING WITH THE FOLLOWING REFERENCE BASE LOCATION:
REFERENCE BASE LOCATED AT "BURCHFIELD" (OPUS PID: BBB243)
TIDE STAFF LOCATED AT "SNAKE RESET" (NGS PID: AF8667)
VERTICAL MEASUREMENTS WERE MADE USING A ROSS 851 SINGLE-BEAM 28200 KHZ SMART SOUNDER. ALL SOUNDINGS SHOWN ARE IN HIGH FREQUENCY.
- VESEL: DATE OF SURVEY: CUT:
WB-32 19 APR 2013 CUTS 2-5
WB-32 01 MAY 2013 CUT-1 AND IMPONDMENT BASIN
- AIDS TO NAVIGATION WERE LOCATED DURING THIS SURVEY.
- THE INFORMATION DEPICTED ON THIS MAP REPRESENTS THE RESULTS OF SURVEYS MADE ON THE DATES INDICATED ABOVE AND CAN ONLY BE CONSIDERED AS INDICATING THE GENERAL CONDITIONS AT THAT TIME. THIS CHART IS SOLELY FOR THE DISTRIBUTION OF AVAILABLE DEPTHS AT THE TIME OF THE SURVEY AND IS NOT TO BE USED FOR NAVIGATION.
- SURVEY ACCURACY PERFORMANCE STANDARDS, QUALITY CONTROL, AND QUALITY ASSURANCE REQUIREMENTS WERE FOLLOWED DURING THIS SURVEY IN ACCORDANCE WITH USACE EM 1110-2-1003, HYDROGRAPHIC SURVEYING, 1 JAN 02.

LEGEND	
	MONUMENT
	LIGHTED BEACON
	GREEN DAYBEACON
	RED DAYBEACON
	RED LIGHTED BUOY
	GREEN LIGHTED BUOY
	CAN BUOY
	NUN BUOY
	TIDE STAFF
	PROJECT DEPTH



US Army Corps of Engineers
Jacksonville District

SAFETY ON THIS JOB
DEPENDS ON YOU

DEPARTMENT OF THE ARMY
JACKSONVILLE DISTRICT, CORPS OF ENGINEERS
JACKSONVILLE, FLORIDA

Checked by: GRL
Drawn by: WMM
Reviewed by: WMM
File No. W013R-06-000001.DGN
Date: 06/11/13
Drawn: 06/11/13
Checked: 06/11/13

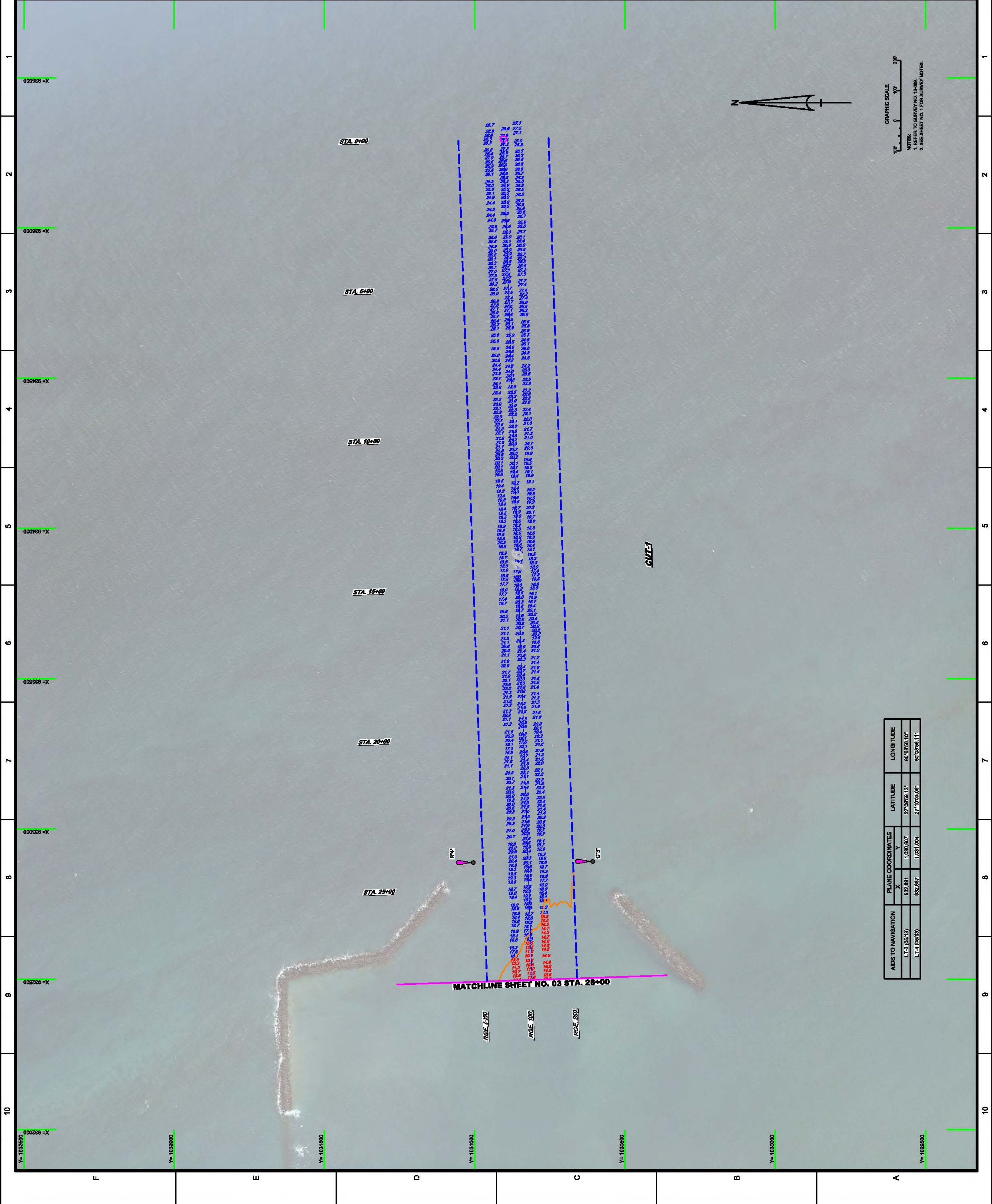
ST. LUCIE INLET
MARTIN COUNTY, FLORIDA
HYDROGRAPHIC EXAMINATION SURVEY FY13
7, 10 & 16-FOOT PROJECT
INDEX, LOCATION AND VICINITY
MAP

Scale: AS SHOWN

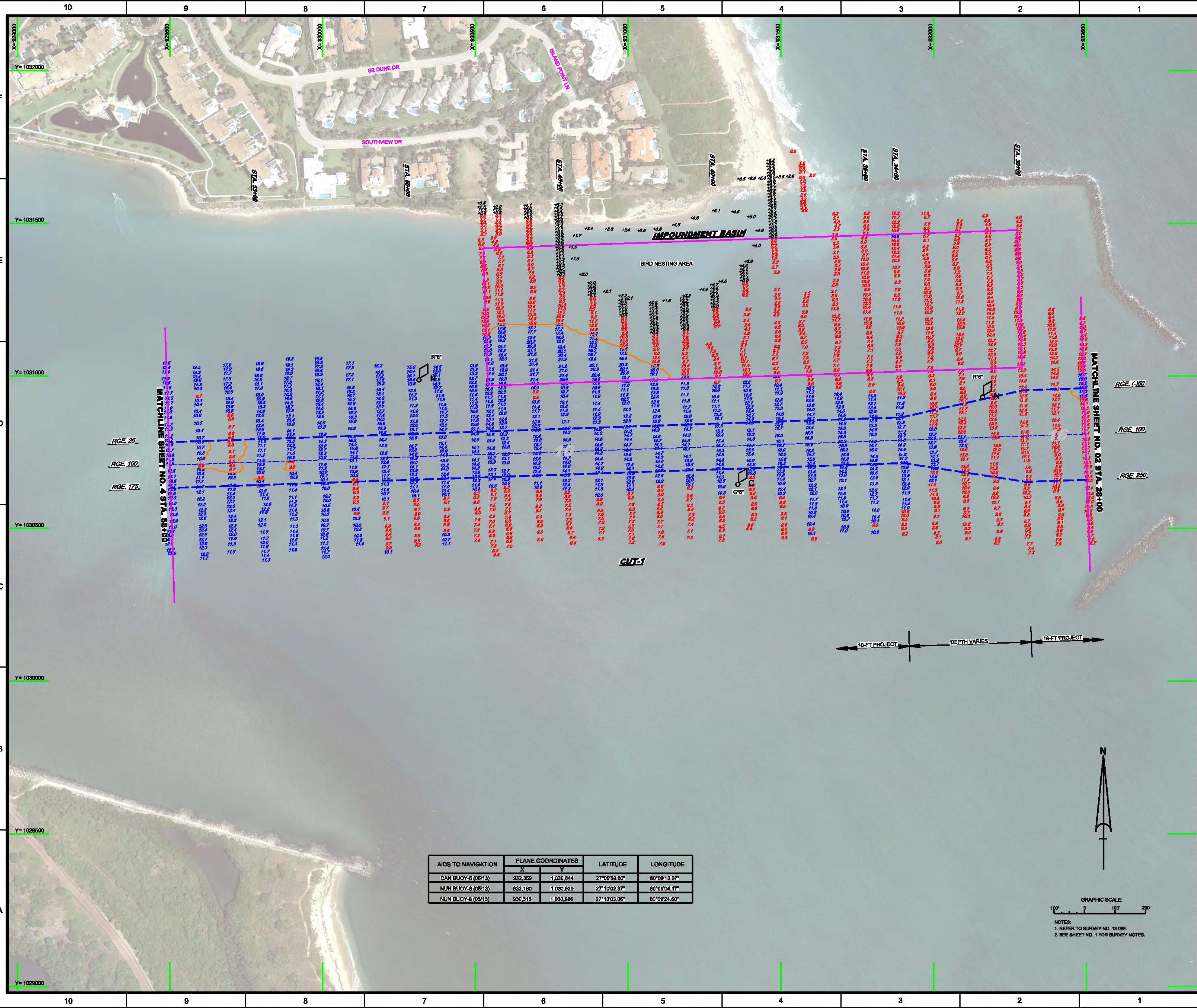
Drawing no.
1

SHEET 01 OF 06

<p>US Army Corps of Engineers Jacksonville District SAFETY ON THIS JOB DEPENDS ON YOU</p>	<p>DEPARTMENT OF THE ARMY JACKSONVILLE DISTRICT, CORPS OF ENGINEERS JACKSONVILLE, FLORIDA</p>	<p>PROJECT NO. W27234-2-K-0001 DRAWN BY W27234-2-K-0001 CHECKED BY W27234-2-K-0001 DATE 01/11/2011</p>	<p>TITLE BLOCK 13-988-VH-SH22.DGN 13-988-C-SB-SH22.DGN 13-988-A-SOUL-CL-DGN 13-988-A-COIN-DGN 13-988-C-SB-SH22.DGN 13-988-A-SOUL-CL-DGN 13-988-A-COIN-DGN</p>	<p>PLAN STATION 0+00 THRU STATION 28+00 CUT-1 HYDROGRAPHIC EXAMINATION SURVEY FY13 ST. LUCIE INLET MARTIN COUNTY, FLORIDA</p>	<p>Drawing no. 2 SHEET 02 OF 06</p>
---	---	--	---	--	--



AIDS TO NAVIGATION	PLANE COORDINATES			LATITUDE	LONGITUDE
	X	Y			
	L-3 (S&P)	932,891	1,030,807		
L-4 (S&P)	932,897	1,031,004	27°10'03.95"	80°08'56.11"	



MATCHLINE SHEET NO. 4 STA. 58+00

MATCHLINE SHEET NO. 02 STA. 28+00

AIDS TO NAVIGATION	PLANE COORDINATES		LATITUDE	LONGITUDE
	X	Y		
CAN BUOY-5 (05/13)	832,359	1,030,844	27°09'59.80"	80°09'13.07"
NUN BUOY-8 (05/13)	832,160	1,030,830	27°10'02.37"	80°09'04.17"
NUN BUOY-8 (05/13)	830,315	1,030,886	27°10'03.06"	80°09'24.80"

GRAPHIC SCALE
100' 0 100' 200'
NOTES:
1. REFER TO SURVEY NO. 13-088.
2. SEE SHEET NO. 1 FOR SURVEY NOTES.

AIDS TO NAVIGATION	PLANE COORDINATES		LATITUDE	LONGITUDE
	X	Y		
CAN BUOY-7 (05/13)	929,257	1,030,777	27°10'01.06"	80°09'36.32"
LT-9 (05/13)	928,200	1,030,356	27°09'57.04"	80°09'48.05"
DBN-12 (05/13)	927,313	1,030,357	27°09'56.82"	80°09'57.86"

US Army Corps of Engineers
Jacksonville District

SAFETY ON THIS JOB
DEPENDS ON YOU

DEPARTMENT OF THE ARMY
JACKSONVILLE DISTRICT, CORPS OF ENGINEERS
JACKSONVILLE, FLORIDA

Check by: GFL
Drawn by: WPM
Reviewed by: WPM
Date: 02/08/2013
Scale: AS SHOWN

BT LUCE INLET
MARTIN COUNTY, FLORIDA

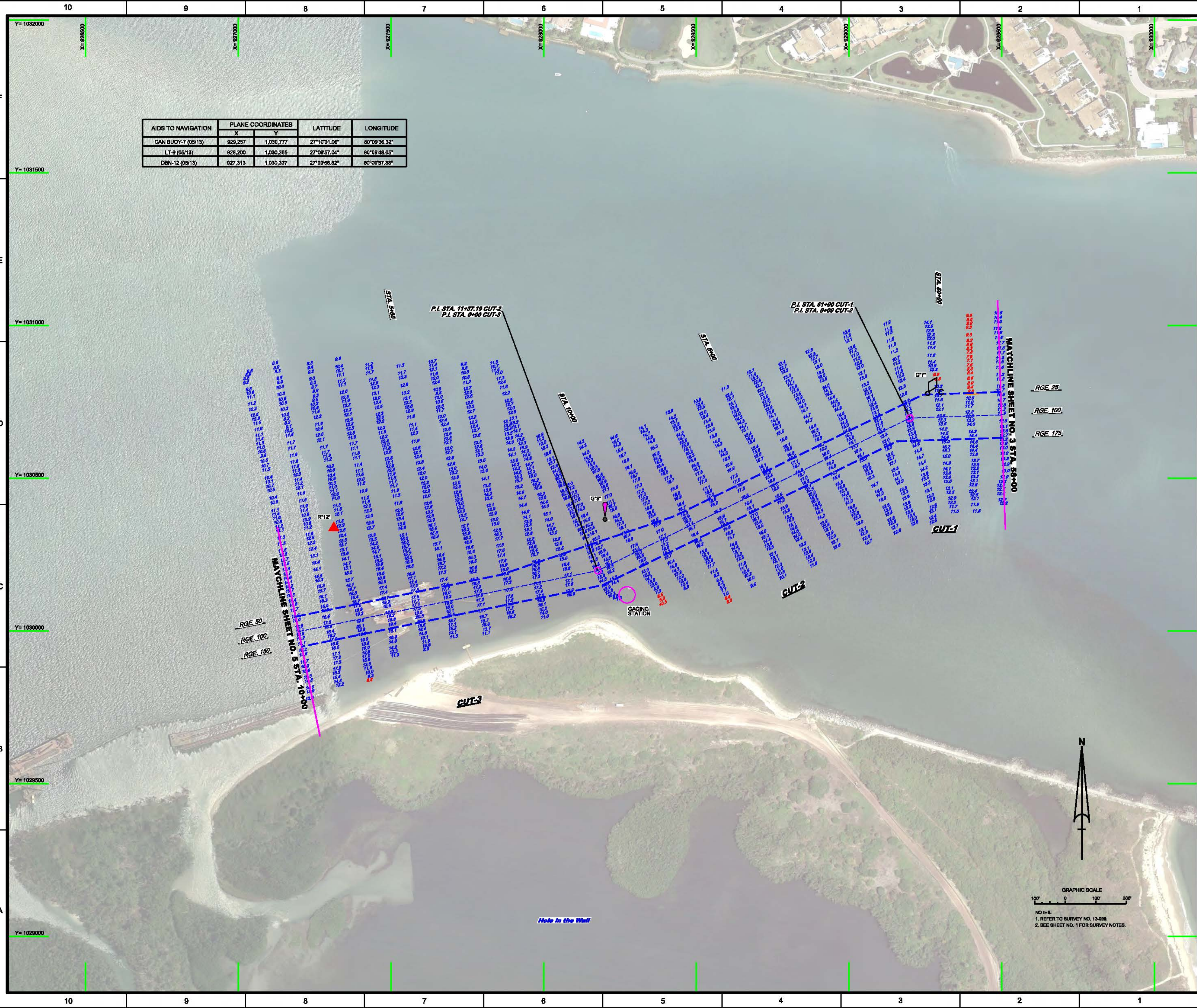
**HYDROGRAPHIC EXAMINATION SURVEY FY13
7, 10 & 16-FOOT PROJECT**

STA. 58+00 CUT-1 THRU STA. 10+00 CUT-3

PLAN

Drawing no. **4**

SHEET 04 OF 06



GRAPHIC SCALE
0 100 200'

NOTES:
1. REFER TO SURVEY NO. 13-099.
2. SEE SHEET NO. 1 FOR SURVEY NOTES.

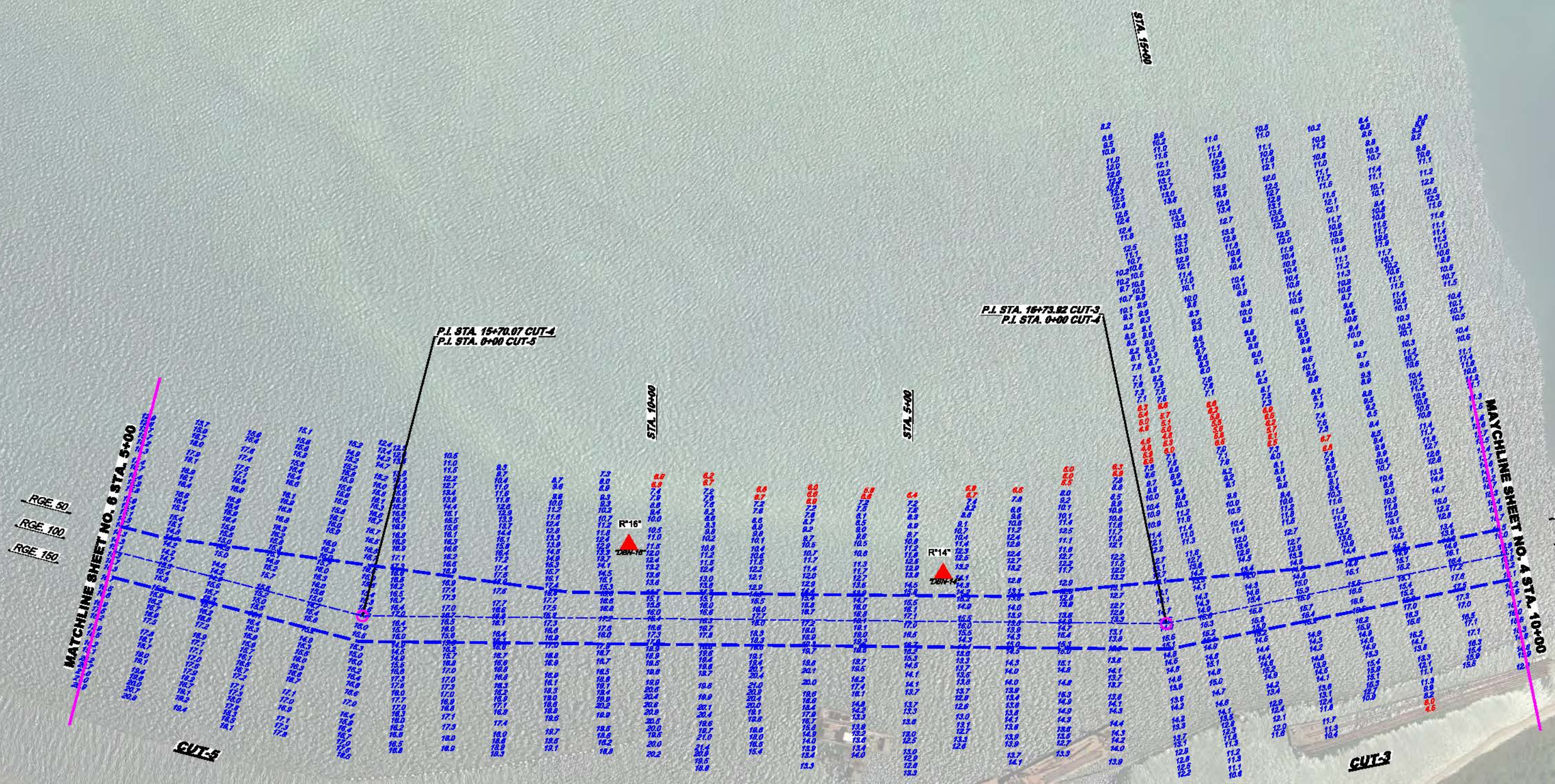
Hole in the Wall

AIDS TO NAVIGATION	PLANE COORDINATES		LATITUDE	LONGITUDE
	X	Y		
DBN-14 (OB'13)	926,101	1,029,980	27°09'53.17"	80°10'11.32"
DBN-16 (OB'13)	925,487	1,030,017	27°09'53.77"	80°10'18.11"

US Army Corps of Engineers
Jacksonville District

SAFETY ON THIS JOB
DEPENDS ON YOU

DEPARTMENT OF THE ARMY
JACKSONVILLE DISTRICT, CORPS OF ENGINEERS
JACKSONVILLE, FLORIDA



Checked by: GRL

Drawn by: WMM

Field No.: 10285-00-000

Drawn: 00111111

BT LUCE INLET
MARTIN COUNTY, FLORIDA

HYDROGRAPHIC EXAMINATION SURVEY FY13
7, 10 & 16-FOOT PROJECT

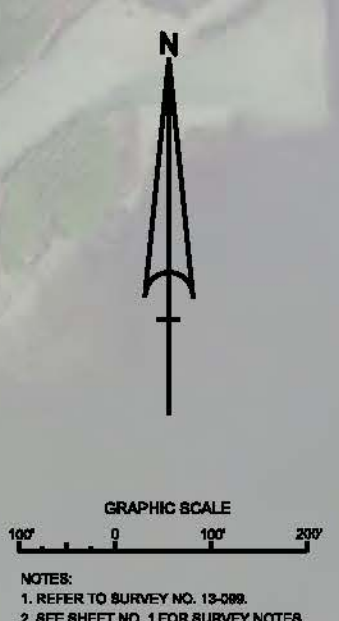
STA. 10+00 CUT-3 THRU STA. 5+00 CUT-5

PLAN

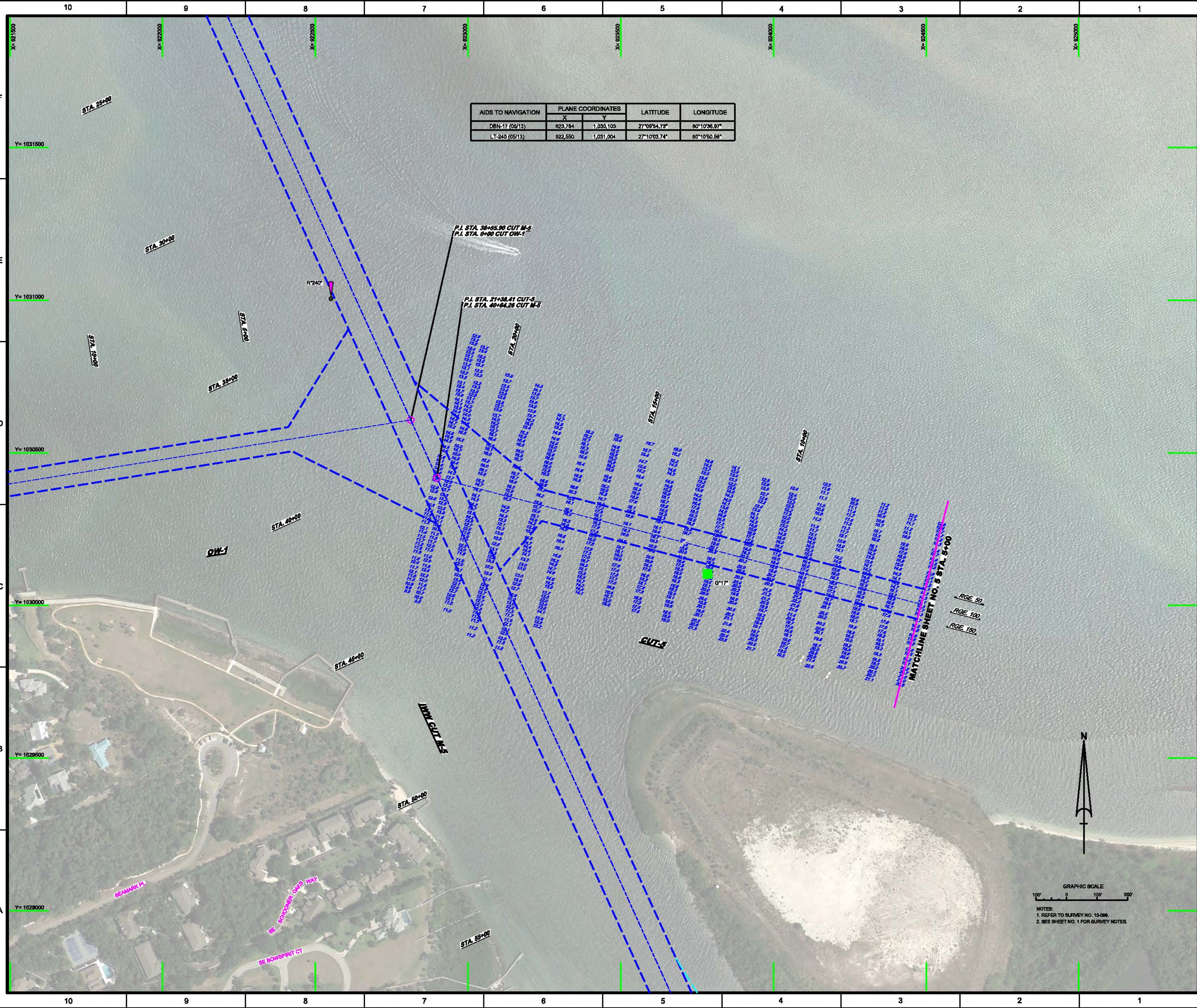
Scale: AS SHOWN

Drawing no. **5**

SHEET 05 OF 06



AIDS TO NAVIGATION	PLANE COORDINATES		LATITUDE	LONGITUDE
	X	Y		
DBN-17 (05'13)	923,784	1,030,103	27°08'54.73"	80°10'36.97"
LT-240 (05'13)	922,550	1,031,004	27°10'03.74"	80°10'50.56"



DEPARTMENT OF THE ARMY
JACKSONVILLE DISTRICT, CORPS OF ENGINEERS
JACKSONVILLE, FLORIDA

Checked by: GFL
Drawn by: WMM
Reviewed by: WMM
Scale: AS SHOWN
Drawing No. 6
SHEET 06 OF 06

ST. LUCIE INLET
MARTIN COUNTY, FLORIDA
**HYDROGRAPHIC EXAMINATION SURVEY FY13
7, 10 & 16-FOOT PROJECT**
STA. 5+00 THRU STA. 21+38.41 CUT-5
PLAN

GRAPHIC SCALE
100' 0 100' 200'
NOTES:
1. REFER TO SURVEY NO. 13-086.
2. SEE SHEET NO. 1 FOR SURVEY NOTES.