

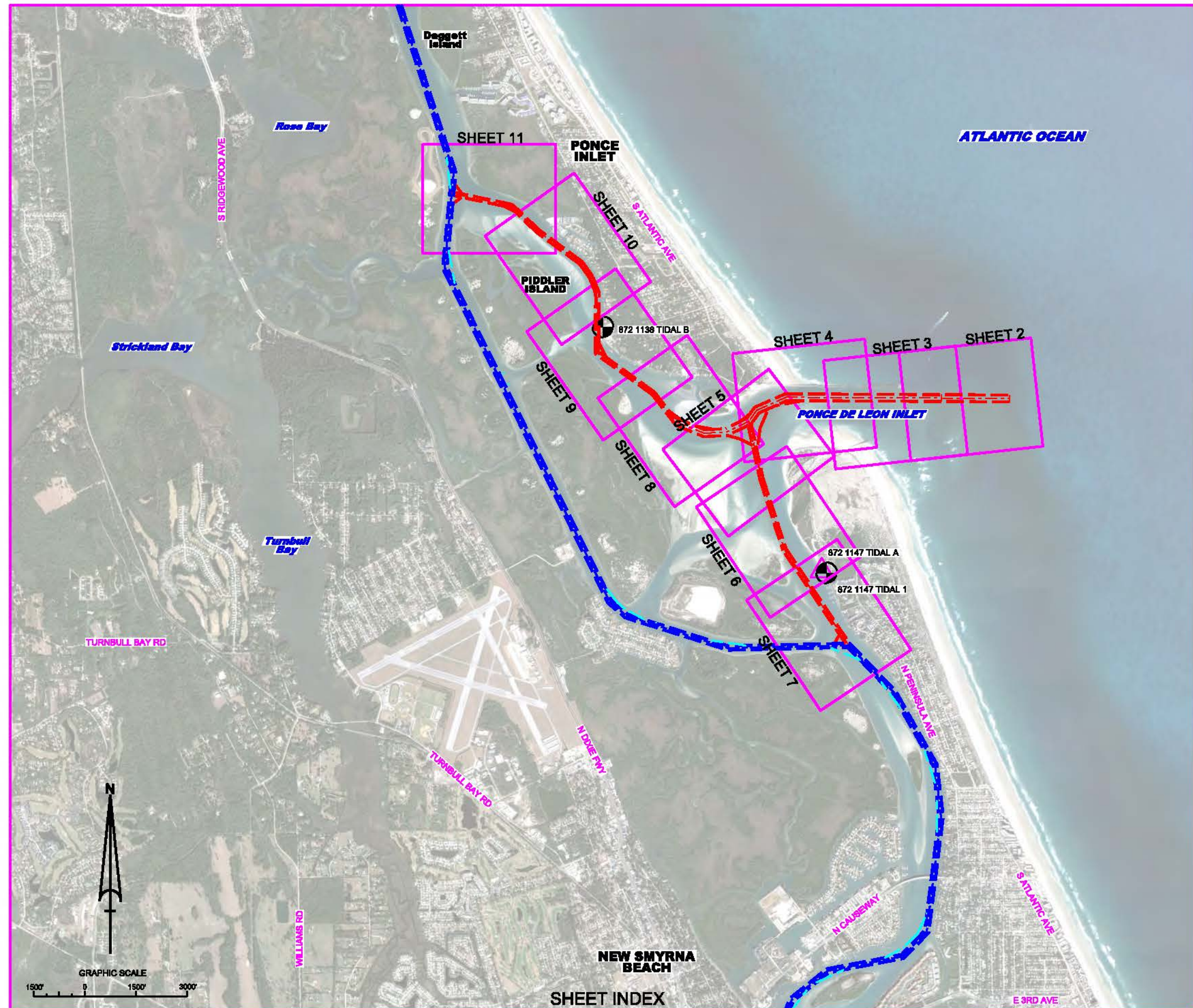
PONCE DE LEON INLET EXAMINATION SURVEY FY13 VOLUSIA COUNTY, FLORIDA 7, 12 AND 15-FOOT PROJECT



US Army Corps of Engineers
Jacksonville District

**SAFETY ON THIS JOB
DEPENDS ON YOU**

DEPARTMENT OF THE ARMY
JACKSONVILLE DISTRICT, CORPS OF ENGINEERS
JACKSONVILLE, FLORIDA



SURVEY NOTES

- REFER TO SURVEY NO. 13-095.
 - TIDAL REDUCTIONS WERE OBTAINED UTILIZING A REAL-TIME KINEMATIC (RTK) GPS AND REFERENCED TO MLLW. KTD FILE NAME IS: "PONCE DELEON INLET-ONLY-2013 04 18.KTD".
 - ALL ELEVATIONS ARE BELOW THE CHART DATUM UNLESS PRECEDED BY A (+) SIGN.
 - PLANE COORDINATES ARE BASED ON THE TRANSVERSE MERCATOR PROJECTION FOR THE EAST ZONE OF FLORIDA AND REFERENCED TO NORTH AMERICAN DATUM OF 1983 (NAD83).
 - ALL AZIMUTHS ARE GRID; RECKONED CLOCKWISE FROM SOUTH.
 - ALL STATIONING REFERS TO THE CENTERLINE OF THE CHANNEL.
 - THIS SURVEY WAS PERFORMED USING REAL-TIME KINEMATIC GPS POSITIONING WITH THE FOLLOWING REFERENCE BASE LOCATION:
REFERENCE BASE LOCATED AT "872 1147 TIDAL A" (OPUS PID: DK6892)
TIDE STAFF LOCATED FROM 872 1147 TIDAL 1 (NGS PID: AQ1522) FOR ENTIRE PROJECT
TIDE STAFF LOCATED FROM 872 1138 TIDAL B (NGS PID: DM3849) FOR QA CHECK
 - DEPTHS DEPICTED BY THIS SURVEY ARE REFERENCED TO MLLW, TIDAL EPOCH 1988-2001 AS REPORTED BY THE NATIONAL OCEANIC AND ATMOSPHERIC ADMINISTRATION (NOAA). NOAA'S VDUTUM MODEL WAS USED AND CALIBRATED TO THE PUBLISHED MLLW HEIGHTS OF THE BENCHMARKS ASSOCIATED WITH THE TIDE GAGE SITES SPECIFIED BELOW:
NOAA TIDAL STATION 872-1147 TIDAL 1 USED FOR ENTIRE PROJECT.
NOAA TIDAL STATION 872-1138 TIDAL B USED FOR QA CHECK.
VERTICAL MEASUREMENTS WERE MADE USING A ROSS SMARTSOUNDER MODEL 936 WITH A DUAL-FREQUENCY 28200 KHZ SINGLE-BEAM TRANSDUCER. ALL SOUNDINGS SHOWN ARE IN HIGH FREQUENCY.
- | VESSEL | DATE OF SURVEY | CLUT |
|--------|----------------|---------------------|
| SB-36 | 07 MAY 2013 | 1A |
| SB-36 | 09 MAY 2013 | 1S - 3S, 2A, 3A, 3N |
| SB-36 | 10 MAY 2013 | 4N - 5N |
| SB-36 | 11 MAY 2013 | 9N - 13N |
| SB-36 | 12 MAY 2013 | 38 EXTENSION |
- AIDS TO NAVIGATION WERE LOCATED DURING THIS SURVEY.
 - THE INFORMATION DEPICTED ON THIS MAP REPRESENTS THE RESULTS OF SURVEYS MADE ON THE DATES INDICATED ABOVE AND CAN ONLY BE CONSIDERED AS INDICATING THE GENERAL CONDITIONS AT THAT TIME. THIS CHART IS SOLELY FOR THE DISTRIBUTION OF AVAILABLE DEPTHS AT THE TIME OF THE SURVEY AND IS NOT TO BE USED FOR NAVIGATION.
 - SURVEY ACCURACY PERFORMANCE STANDARDS, QUALITY CONTROL, AND QUALITY ASSURANCE REQUIREMENTS WERE FOLLOWED DURING THIS SURVEY IN ACCORDANCE WITH USACE EM 1110-2-1003, HYDROGRAPHIC SURVEYING, 1 JAN 02.

LEGEND	
	MONUMENT
	LIGHTED BEACON
	GREEN DAYBEACON
	RED DAYBEACON
	RED LIGHTED BUOY
	GREEN LIGHTED BUOY
	CAN BUOY
	NUN BUOY
	TIDE STAFF
	PROJECT DEPTH

PONCE DE LEON INLET, FLORIDA
**PONCE DE LEON INLET
EXAMINATION SURVEY FY13
7 AND 12-FOOT PROJECT**
INDEX, LOCATION AND VICINITY
MAP

Scale: AS SHOWN
Drawing no. 1
SHEET 01 OF 11

AIDS TO NAVIGATION	PLANE COORDINATES		LATITUDE	LONGITUDE
	X	Y		
LT. BUOY-4 (0813)	888,181	1,725,054	28°04'44.85"	80°53'59.17"
LT. BUOY-5 (0813)	887,477	1,724,289	28°04'38.79"	80°54'07.11"

GRAPHIC SCALE
100' 0 100' 200'

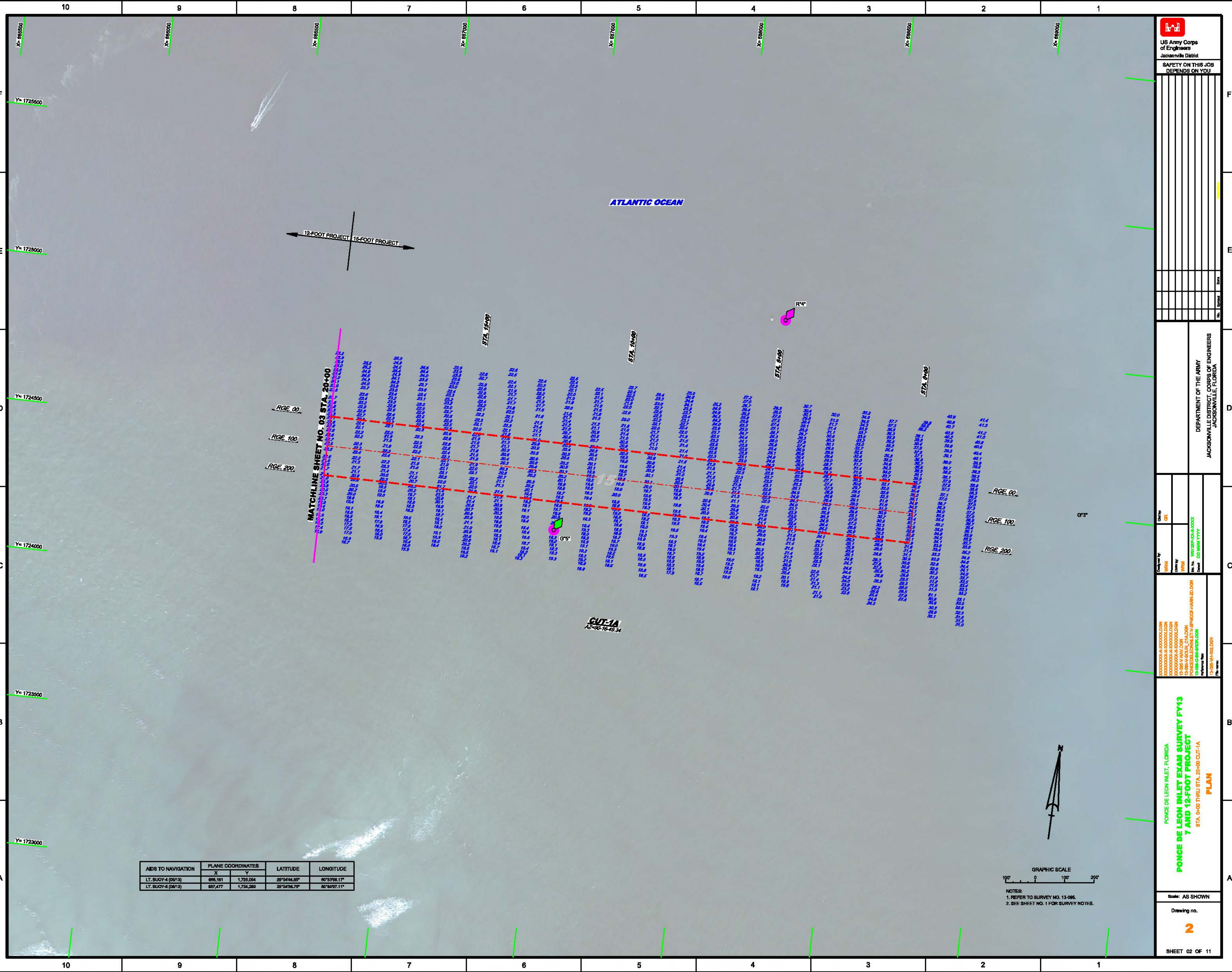
NOTES:
1. REFER TO SURVEY NO. 13-095.
2. SEE SHEET NO. 1 FOR SURVEY NOTES.

US Army Corps of Engineers
Jacksonville District
SAFETY ON THIS JOB
DEPENDS ON YOU

DEPARTMENT OF THE ARMY
JACKSONVILLE DISTRICT, CORPS OF ENGINEERS
JACKSONVILLE, FLORIDA

Checked by: GFL
Drawn by: WMM
Project: PONGE DE LEON INLET EXAM SURVEY FY13
STA. 0+00 THRU STA. 20+00 CUT-1A
PLAN

Scale: AS SHOWN
Drawing no. **2**
SHEET 02 OF 11



ATLANTIC OCEAN

CUT-1A
12-00-16-20.24

MATCHLINE SHEET NO. 03 STA. 20+00

RGE 00
RGE 100
RGE 200

STA. 15+00

STA. 16+00

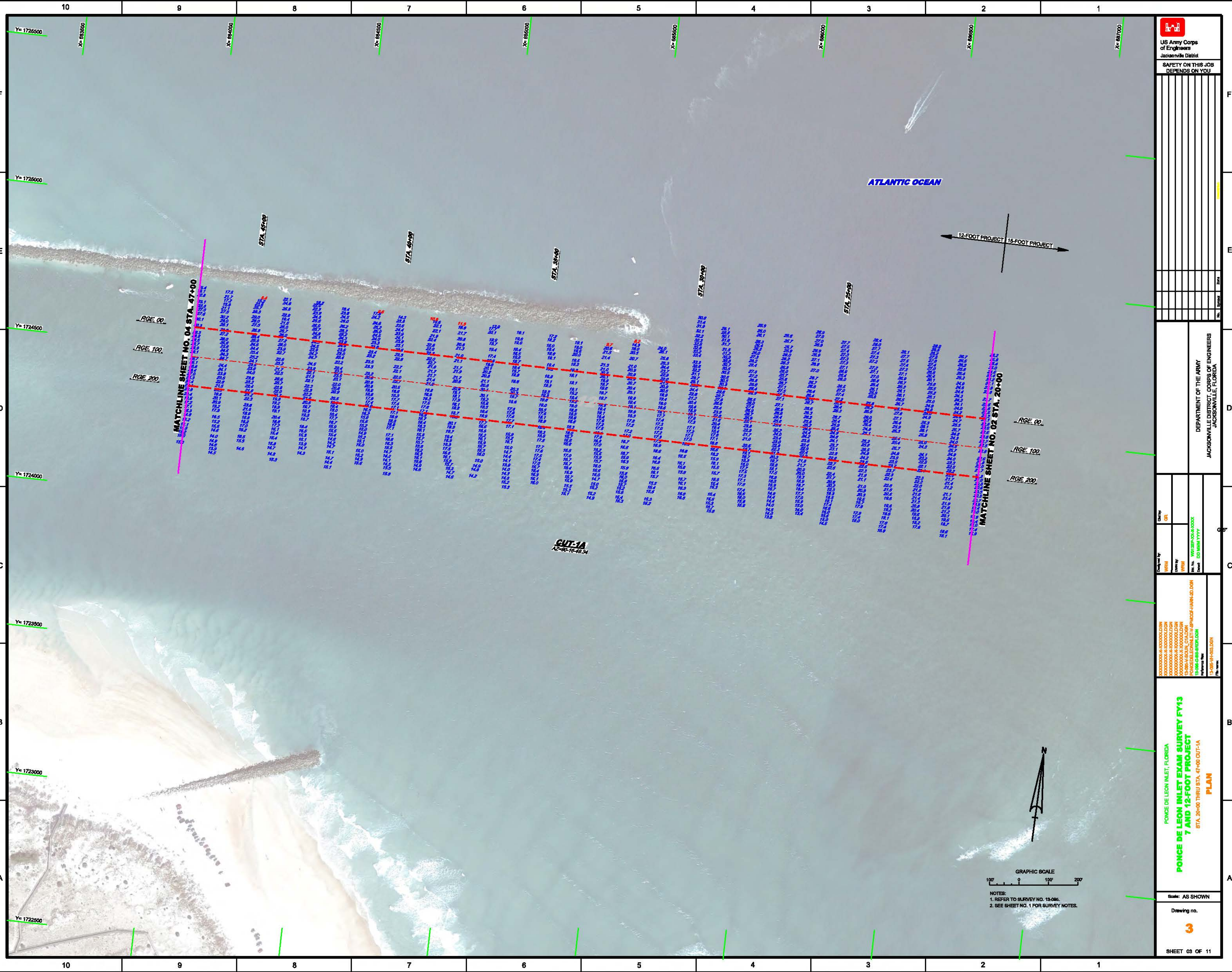
STA. 17+00

STA. 18+00

RGE 00
RGE 100
RGE 200

0°3'

PONGE DE LEON INLET EXAM SURVEY FY13
STA. 0+00 THRU STA. 20+00 CUT-1A
PLAN



ATLANTIC OCEAN

12-FOOT PROJECT 18-FOOT PROJECT

MATCHLINE SHEET NO. 04 STA. 47+00

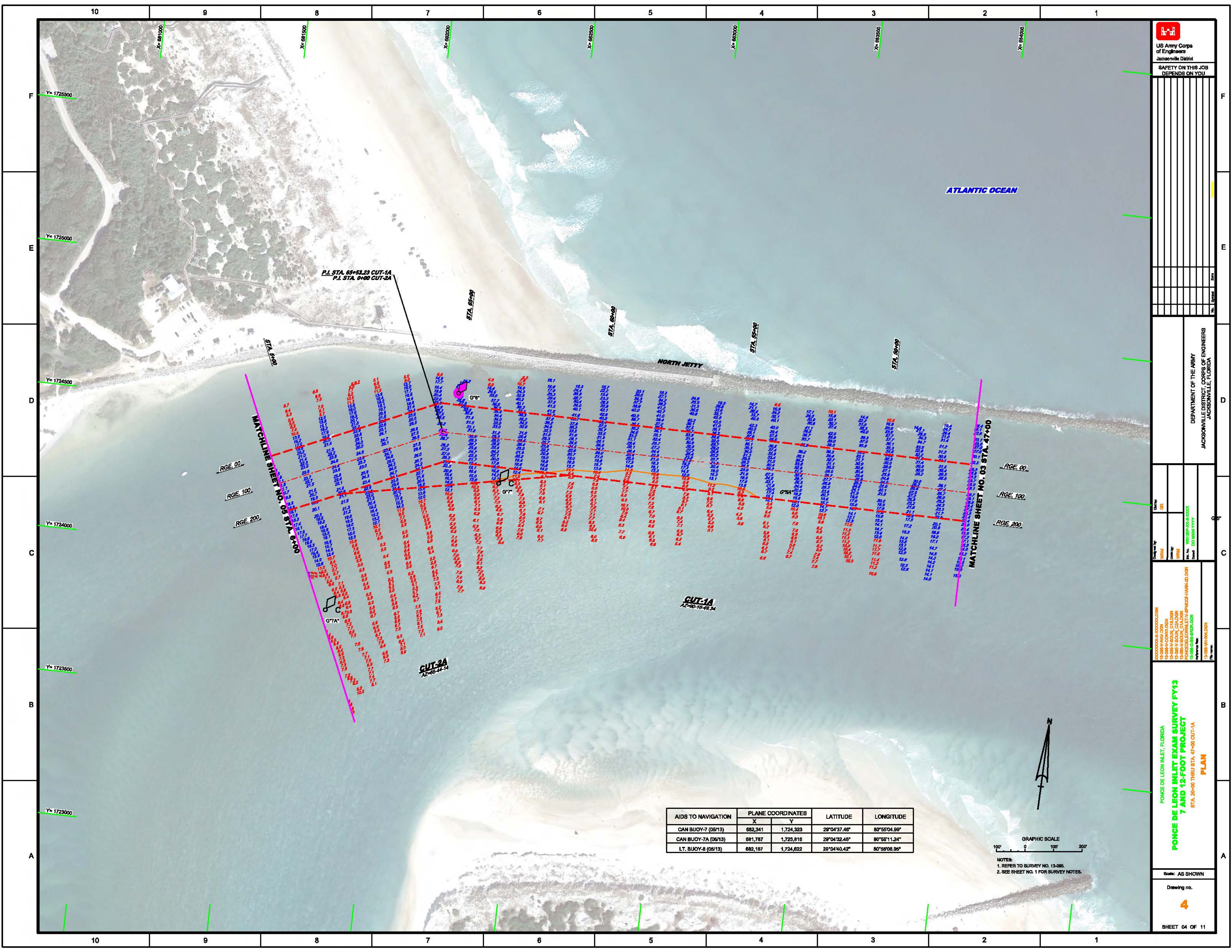
MATCHLINE SHEET NO. 02 STA. 20+00

CUT-1A
 AZ-80-16-40.34



GRAPHIC SCALE
 0 100 200

NOTES:
 1. REFER TO SURVEY NO. 13-006.
 2. SEE SHEET NO. 1 FOR SURVEY NOTES.



US Army Corps of Engineers
Jacksonville District

**SAFETY ON THIS JOB
DEPENDS ON YOU**

DEPARTMENT OF THE ARMY
JACKSONVILLE DISTRICT, CORPS OF ENGINEERS
JACKSONVILLE, FLORIDA

Checked by: GFL
Created by: WSM
Drawn by: WSM
Approved by: WSM
Date: 10/11/13
Project: PONDCE DE LEON INLET EXAM SURVEY FY13
Sheet: 04 OF 11

**PONDCE DE LEON INLET EXAM SURVEY FY13
7 AND 12-FOOT PROJECT
PLAN**

STA. 20+00 THRU STA. 47+00 CUT-1A

Scale: AS SHOWN

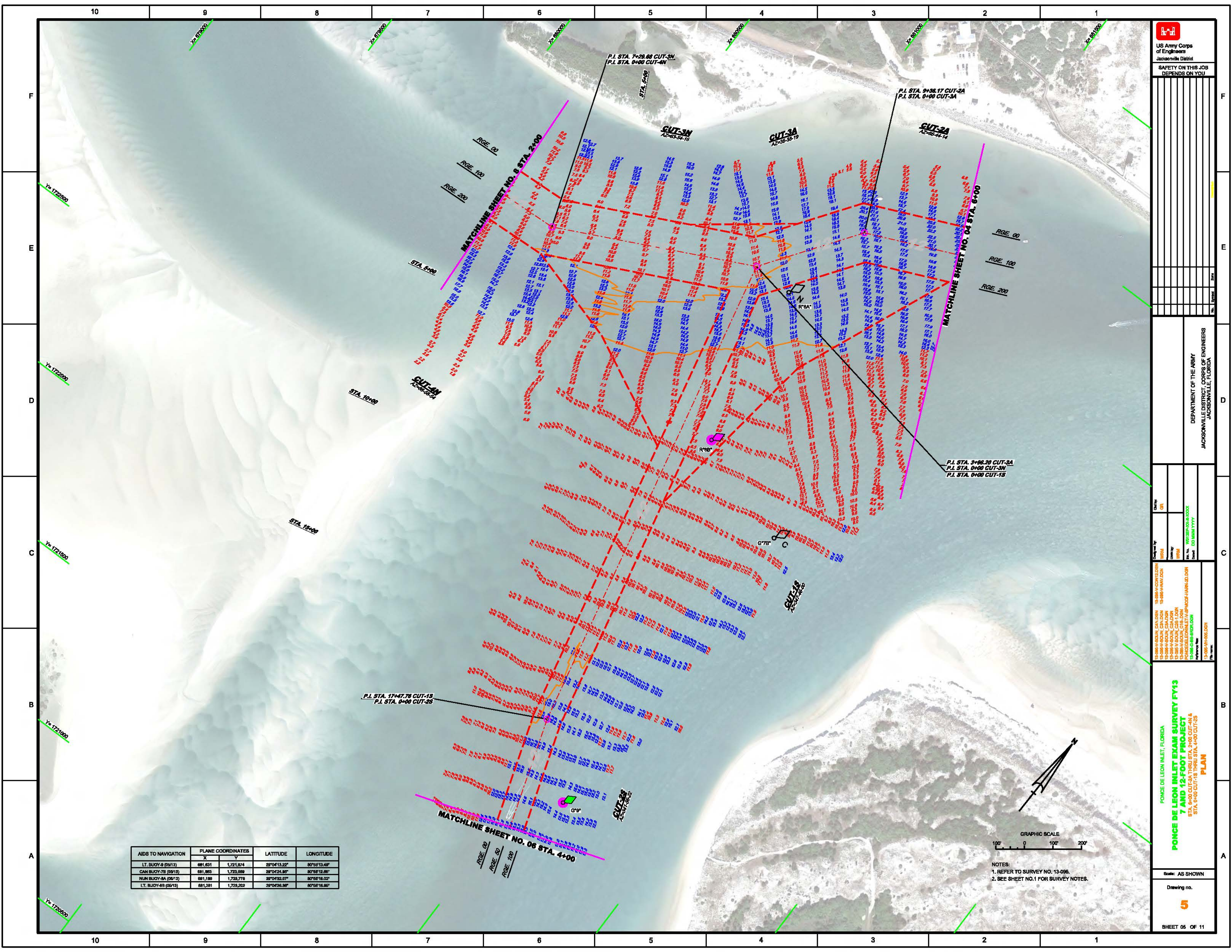
Drawing no.
4

SHEET 04 OF 11

AIDS TO NAVIGATION	PLANE COORDINATES		LATITUDE	LONGITUDE
	X	Y		
CAN BUOY-7 (05/13)	682,341	1,724,323	29°04'37.46"	80°55'04.99"
CAN BUOY-7A (06/13)	681,787	1,723,816	29°04'32.45"	80°55'11.24"
LT. BUOY-8 (05/13)	682,187	1,724,622	29°04'40.42"	80°55'08.95"

GRAPHIC SCALE
100' 0 100' 200'

NOTES:
1. REFER TO SURVEY NO. 13-065.
2. SEE SHEET NO. 1 FOR SURVEY NOTES.



AIDS TO NAVIGATION	PLANE COORDINATES		LATITUDE	LONGITUDE
	X	Y		
LT. BUOY-9 (06/13)	681,631	1,721,674	29°04'13.22"	80°59'13.49"
CAN BUOY-7E (09/13)	681,893	1,723,069	29°04'24.80"	80°58'12.86"
NUN BUOY-8A (06/13)	681,186	1,728,778	29°04'32.07"	80°56'18.02"
LT. BUOY-8E (05/13)	681,281	1,728,202	29°04'28.98"	80°56'18.96"



NOTES:
 1. REFER TO SURVEY NO. 13-096.
 2. SEE SHEET NO.1 FOR SURVEY NOTES.



SAFETY ON THIS JOB
DEPENDS ON YOU

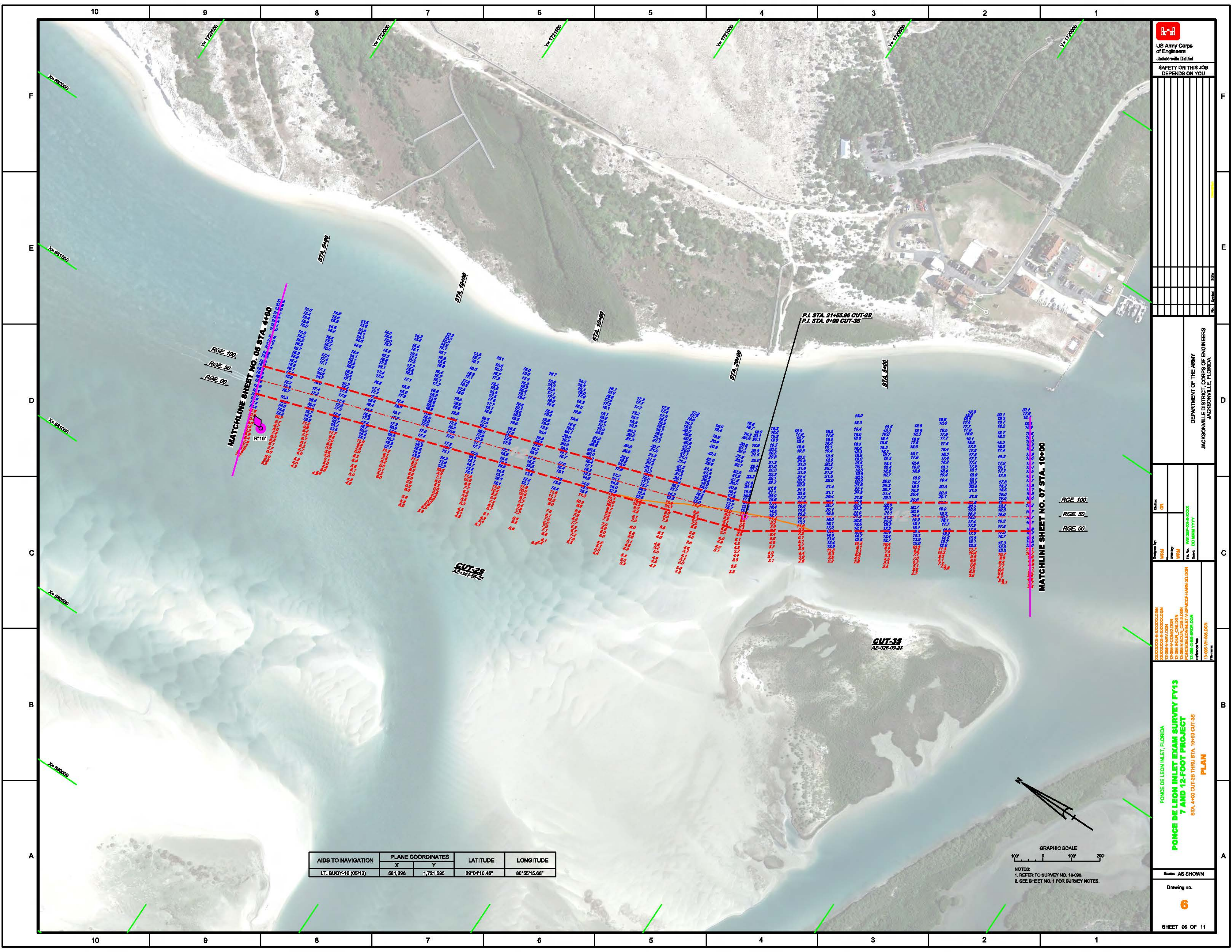
PROJECT	
NO.	
DATE	
SCALE	
DESIGNER	
CHECKER	
APPROVED	
DATE	
BY	
DATE	
BY	
DATE	
BY	
DATE	
BY	
DATE	
BY	
DATE	
BY	
DATE	

DEPARTMENT OF THE ARMY
 JACKSONVILLE DISTRICT, CORPS OF ENGINEERS
 JACKSONVILLE, FLORIDA

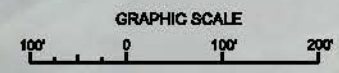
Drawn By	ORL
Checked By	WRM
Designed By	WRM
Date	01/14/13
Project No.	13-096-13-001
Sheet No.	05 OF 11

PONCE DE LEON INLET EXAM SURVEY FY13
 7 AND 12-FOOT PROJECT
 STA. 8+00 CUT-2A THRU STA. 2+00 CUT-4N &
 STA. 0+00 CUT-1S THRU STA. 4+00 CUT-2S
PLAN


Scale: AS SHOWN
 Drawing no. **5**
 SHEET 05 OF 11



AIDS TO NAVIGATION	PLANE COORDINATES		LATITUDE	LONGITUDE
	X	Y		
LT. BUOY-10 (0513)	881,396	1,721,595	28°04'10.48"	80°55'15.86"



NOTES:
 1. REFER TO SURVEY NO. 13-026.
 2. SEE SHEET NO. 1 FOR SURVEY NOTES.



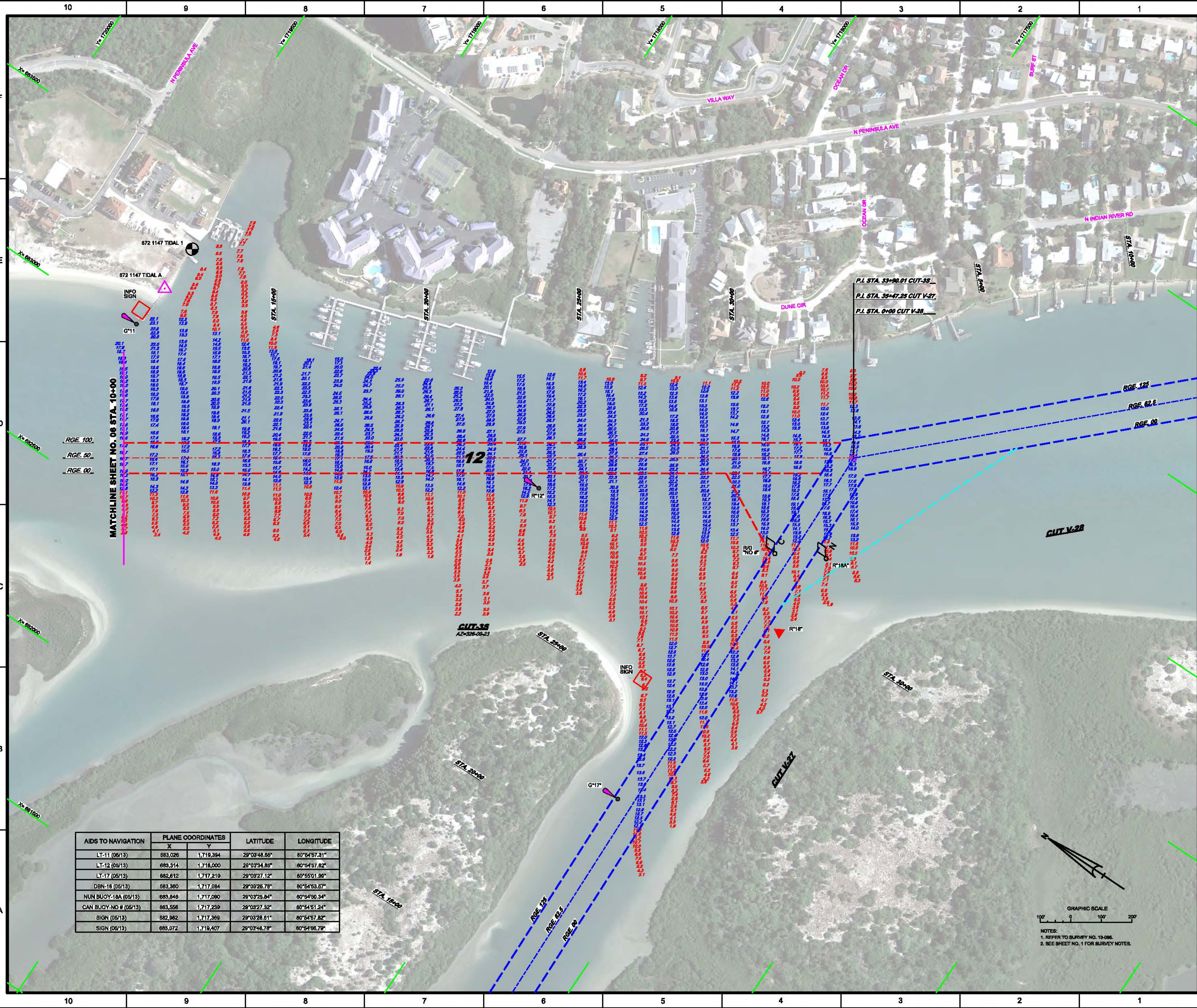
US Army Corps of Engineers
 Jacksonville District
SAFETY ON THIS JOB DEPENDS ON YOU

DEPARTMENT OF THE ARMY
 JACKSONVILLE DISTRICT, CORPS OF ENGINEERS
 JACKSONVILLE, FLORIDA

Checked by: GFL
 Drawn by: WMM
 Date: 03/01/2013
 Project: POND DE LEON INLET EXAM SURVEY FY13
 Station: STA. 4+00 CUT-28 THRU STA. 10+00 CUT-35
 Scale: AS SHOWN

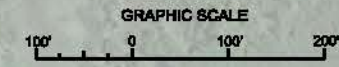
**PONCE DE LEON INLET EXAM SURVEY FY13
 7 AND 12-FOOT PROJECT
 STA. 4+00 CUT-28 THRU STA. 10+00 CUT-35
 PLAN**

Drawing no. **6**
 SHEET 06 OF 11

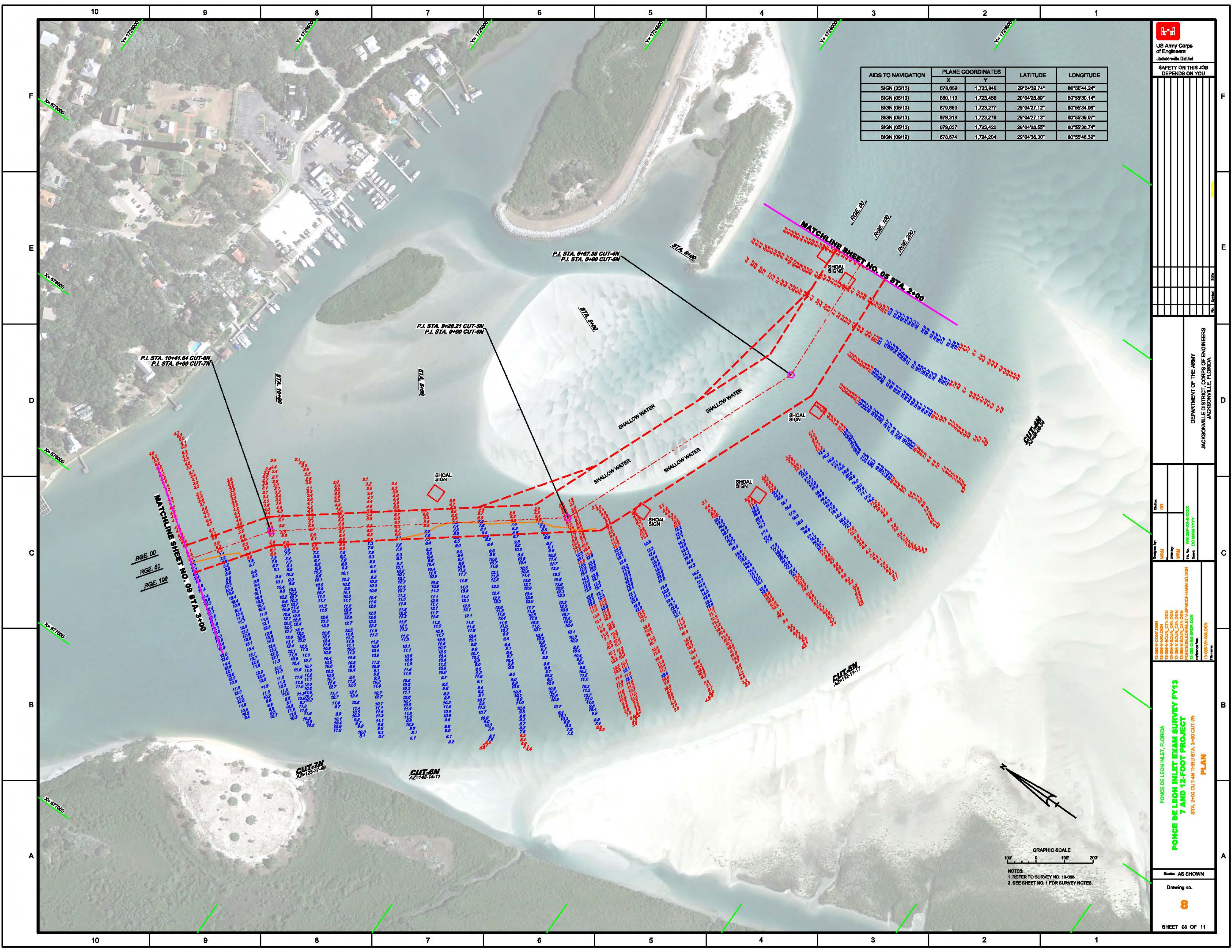


MATCHLINE SHEET NO. 06 STA. 10+00

AIDS TO NAVIGATION	PLANE COORDINATES		LATITUDE	LONGITUDE
	X	Y		
LT-11 (05/13)	683,026	1,719,394	29°03'48.86"	80°54'57.31"
LT-12 (05/13)	683,314	1,718,000	29°03'34.85"	80°54'57.82"
LT-17 (05/13)	682,612	1,717,219	29°03'27.12"	80°55'01.99"
DBN-16 (05/13)	683,360	1,717,084	29°03'26.78"	80°54'53.67"
NUN BUOY-18A (05/13)	683,846	1,717,080	29°03'25.84"	80°54'50.34"
CAN BUOY-NO # (05/13)	683,556	1,717,239	29°03'27.32"	80°54'51.24"
SIGN (06/13)	682,982	1,717,369	29°03'28.81"	80°54'57.82"
SIGN (05/13)	683,072	1,719,407	29°03'48.78"	80°54'56.79"



NOTES:
 1. REFER TO SURVEY NO. 13-086.
 2. SEE SHEET NO. 1 FOR SURVEY NOTES.



AIDS TO NAVIGATION	PLANE COORDINATES		LATITUDE	LONGITUDE
	X	Y		
SIGN (05/13)	878,859	1,723,846	29°04'32.74"	80°55'44.24"
SIGN (05/13)	880,110	1,723,456	29°04'28.88"	80°55'30.14"
SIGN (05/13)	679,880	1,723,277	29°04'27.12"	80°55'34.98"
SIGN (05/13)	679,318	1,723,278	29°04'27.13"	80°55'39.07"
SIGN (05/13)	679,037	1,723,422	29°04'28.55"	80°55'38.74"
SIGN (08/12)	678,674	1,724,204	29°04'38.30"	80°55'46.32"

US Army Corps of Engineers
Jacksonville District

SAFETY ON THIS JOB
DEPENDS ON YOU

Checked by	ORL
Drawn by	WMM
Checked by	WMM
Drawn by	WMM
Checked by	WMM
Drawn by	WMM

DEPARTMENT OF THE ARMY
JACKSONVILLE DISTRICT, CORPS OF ENGINEERS
JACKSONVILLE, FLORIDA

13-0861-1-CONVZ.DGN
13-0861-1-AMV.DGN
13-0861-1-BOUL.CAN.DGN
13-0861-1-BOUL.CAN.DGN
13-0861-1-BOUL.CAN.DGN
13-0861-1-BOUL.CAN.DGN
13-0861-1-BOUL.CAN.DGN
13-0861-1-BOUL.CAN.DGN

**PONCE DE LEON INLET EXAM SURVEY FY13
7 AND 12-FOOT PROJECT
PLAN**

STA: 2+00 CUT-4N THRU STA: 3+00 CUT-7N

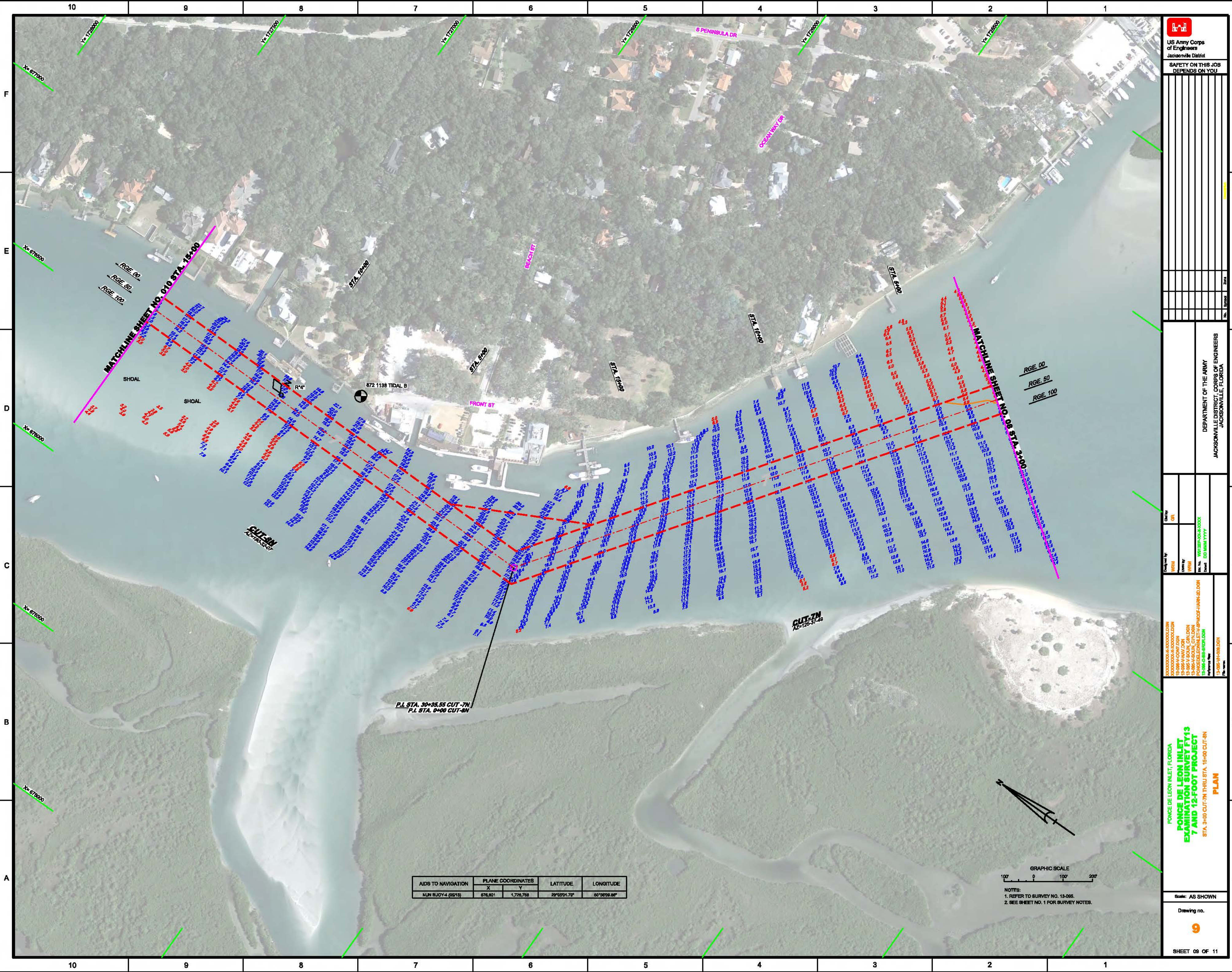
Scale: AS SHOWN

Drawing no. **8**

SHEET 08 OF 11

GRAPHIC SCALE
100' 0 100' 200'

NOTES:
1. REFER TO SURVEY NO. 13-098.
2. SEE SHEET NO. 1 FOR SURVEY NOTES.



US Army Corps of Engineers
Jacksonville District
SAFETY ON THIS JOB DEPENDS ON YOU

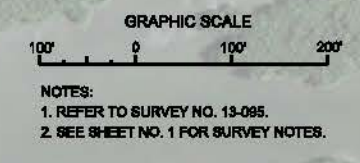
Checked by	GR
Drawn by	WRM
Scale	AS SHOWN
Project	POINTE DE LEON INLET, FLORIDA
Sheet	9

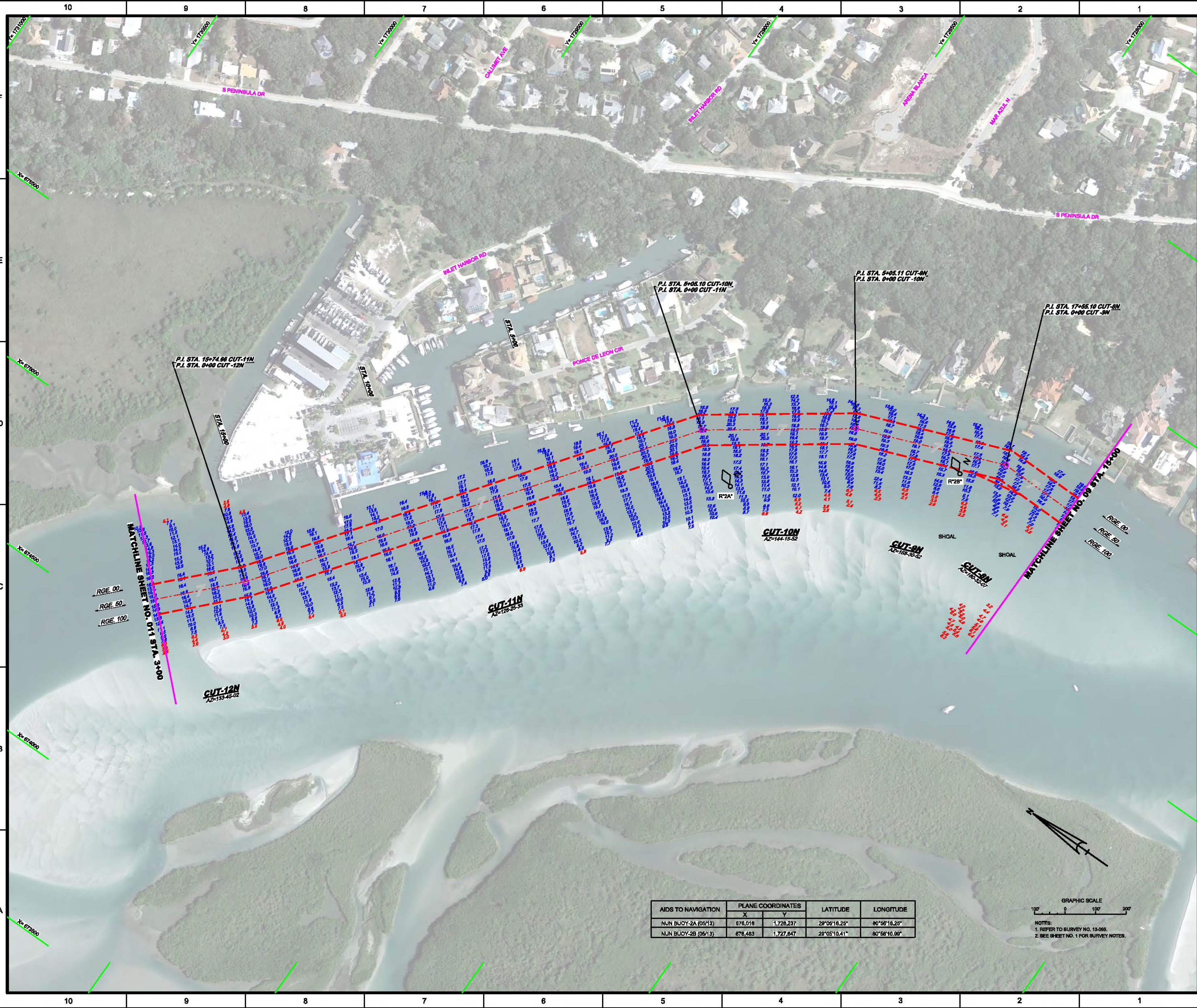
DEPARTMENT OF THE ARMY
JACKSONVILLE DISTRICT, CORPS OF ENGINEERS
JACKSONVILLE, FLORIDA

POINTE DE LEON INLET, FLORIDA
POINTE DE LEON INLET EXAMINATION SURVEY FY13 7 AND 12-FOOT PROJECT
STA. 3+00 CUT-IN THRU STA. 15+00 CUT-IN
PLAN

Scale: AS SHOWN
Drawing no. 9
SHEET 08 OF 11

AIDS TO NAVIGATION	PLANE COORDINATES		LATITUDE	LONGITUDE
	X	Y		
NUN BODY-4 (0513)	878,801	1,728,788	29°02'01.70"	80°58'09.86"





AIDS TO NAVIGATION	PLANE COORDINATES		LATITUDE	LONGITUDE
	X	Y		
NUN BUOY-2A (0513)	878,016	1,728,237	29°09'16.25"	80°56'18.25"
NUN BUOY-2B (0513)	876,483	1,727,647	28°05'10.41"	80°58'10.98"

GRAPHIC SCALE
100' 0 100' 200'
NOTES:
1. REFER TO SURVEY NO. 13-086.
2. SEE SHEET NO. 1 FOR SURVEY NOTES.

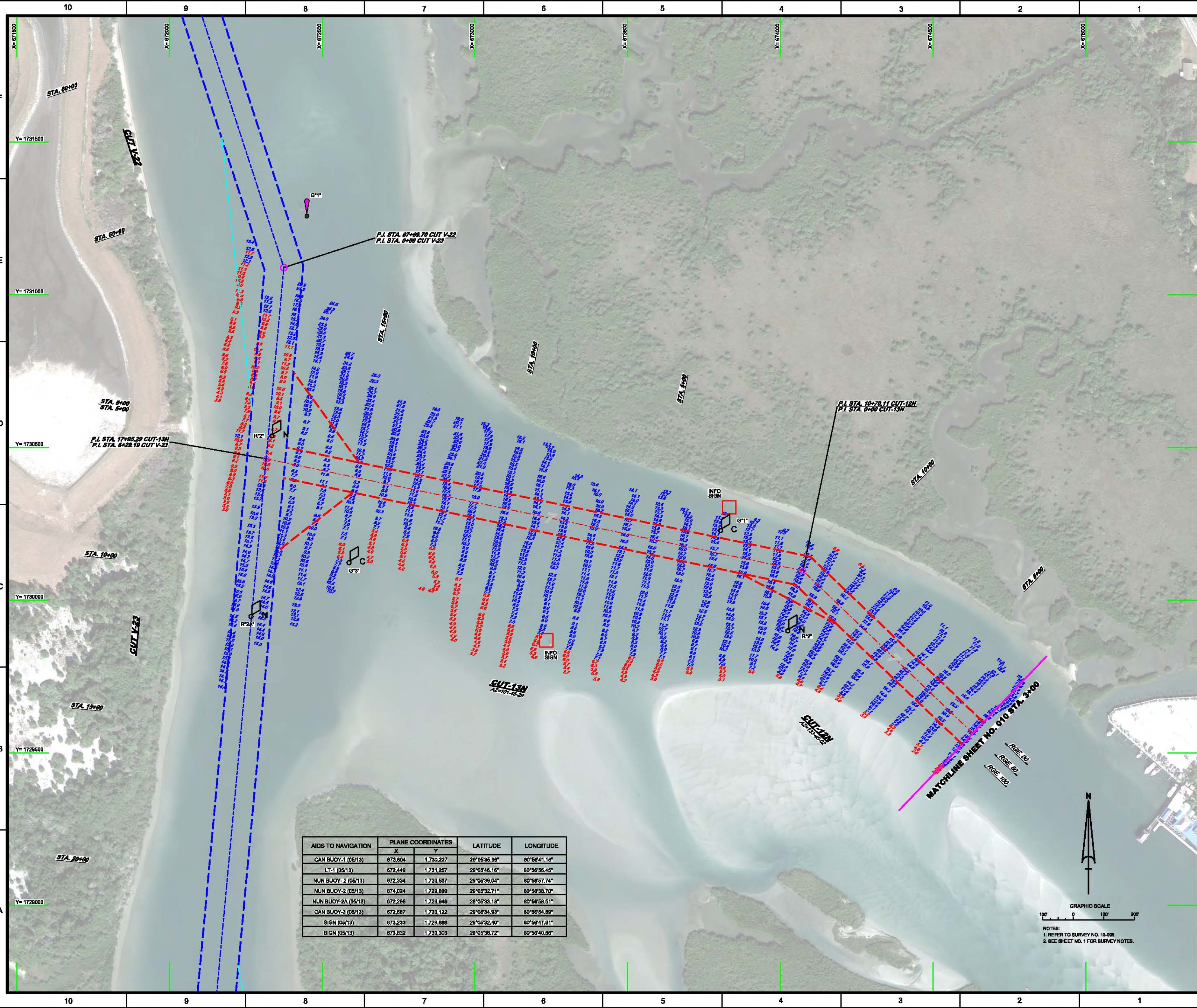
US Army Corps of Engineers
Jacksonville District
SAFETY ON THIS JOB
DEPENDS ON YOU

DEPARTMENT OF THE ARMY
JACKSONVILLE DISTRICT, CORPS OF ENGINEERS
JACKSONVILLE, FLORIDA

Checked by: GFL
Drawn by: WPM
Reviewed by: WPM
Scale: AS SHOWN

PROJECT: PONCE DE LEON INLET EXAM SURVEY FY13
7 AND 12-FOOT PROJECT
STA. 3+00 CUT-12N THRU STA. 17+98.29 CUT-12N
PLAN

Drawing no. **11**
SHEET 11 OF 11



AIDS TO NAVIGATION	PLANE COORDINATES		LATITUDE	LONGITUDE
	X	Y		
CAN BUOY-1 (05/13)	673,804	1,730,227	29°05'35.96"	80°58'41.16"
LT-1 (05/13)	672,449	1,731,257	29°05'48.16"	80°58'56.45"
NUN BUOY-2 (05/13)	672,334	1,730,537	29°05'39.04"	80°58'57.74"
NUN BUOY-2 (05/13)	674,024	1,728,899	28°05'32.71"	80°58'38.70"
NUN BUOY-2A (05/13)	672,266	1,728,846	28°05'33.18"	80°58'58.51"
CAN BUOY-3 (05/13)	672,887	1,730,122	29°05'34.93"	80°58'54.89"
SIGN (05/13)	673,233	1,728,868	28°05'32.40"	80°58'47.81"
SIGN (05/13)	673,832	1,730,303	28°05'38.72"	80°58'40.88"