



FT. PIERCE HARBOR ST. LUCIE COUNTY, FLORIDA HYDRO EXAM SURVEY FY13 28 & 30-FOOT PROJECT

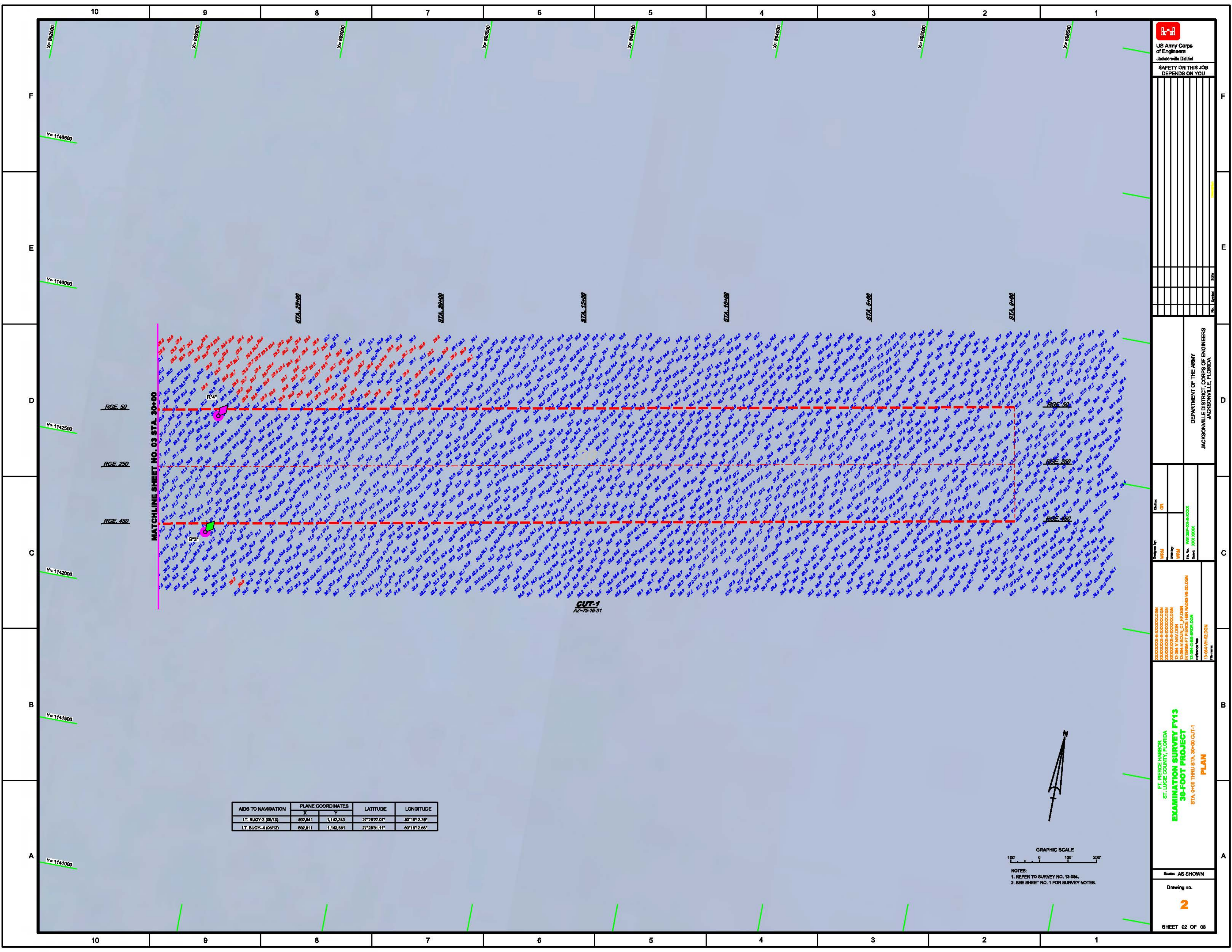
SURVEY NOTES

- REFER TO SURVEY NO. 13-084.
- SOUNDINGS ARE IN FEET AND TENTHS AND REFER TO NOAA'S REPORTED MEAN LOWER LOW WATER (MLLW) OF THE 1983-2001 TIDAL EPOCH.
- TIDAL REDUCTIONS WERE OBTAINED UTILIZING A REAL-TIME KINEMATIC (RTK) GPS AND REFERENCED TO MLLW UTILIZING A HYPACK KINEMATIC TIDE DATUM (KTD) MODEL. KTD FILE NAME IS: "FTPIERCE-ONLY.KTD".
- ALL ELEVATIONS ARE BELOW THE CHART DATUM UNLESS PRECEDED BY A (P) SIGN.
- PLANE COORDINATES ARE BASED ON THE TRANSVERSE MERCATOR PROJECTION FOR THE EAST ZONE OF FLORIDA AND REFERENCED TO NORTH AMERICAN DATUM OF 1983 (NAD83).
- ALL AZIMUTHS ARE GRID; RECKONED CLOCKWISE FROM SOUTH.
- ALL STATIONING REFERS TO THE CENTERLINE OF THE CHANNEL.
- THIS SURVEY WAS PERFORMED USING REAL-TIME KINEMATIC (RTK) GPS POSITIONING WITH THE FOLLOWING REFERENCE BASE LOCATIONS:
REFERENCE BASE LOCATED AT '872 2213 K' (PID: D13923)
TIDE STAFF LOCATED AT '872 2213 K' (PID: D13923)
- DEPTHS DEPICTED BY THIS SURVEY ARE REFERENCED TO MLLW, TIDAL EPOCH 1983-2001 AS REPORTED BY THE NATIONAL OCEANIC AND ATMOSPHERIC ADMINISTRATION (NOAA). NOAA'S VDATUM MODEL WAS USED AND CALIBRATED TO THE PUBLISHED MLLW HEIGHTS OF THE BENCHMARKS ASSOCIATED WITH THE TIDE GAGE SITES SPECIFIED BELOW:
NOAA TIDAL STATION 872-2213 FOR ALL CUTS.
VERTICAL MEASUREMENTS WERE MADE USING A R2 SONIC 2024 MULTI-BEAM SONAR OPERATING AT 240 KHZ (HIGH FREQUENCY) FOR ALL CUTS. ALL SOUNDINGS SHOWN ARE IN HIGH FREQUENCY.
- | VESSEL | DATE OF SURVEY | CUT |
|---------------|----------------|---------------------|
| SV FLORIDA II | 01-02 MAY 2013 | 1, 2, TURNING BASIN |
- AIDS TO NAVIGATION WERE LOCATED DURING THIS SURVEY.
- THE INFORMATION DEPICTED ON THIS MAP REPRESENTS THE RESULTS OF SURVEYS MADE ON THE DATES INDICATED ABOVE AND CAN ONLY BE CONSIDERED AS INDICATING THE GENERAL CONDITIONS AT THAT TIME. THIS CHART IS SOLELY FOR THE DISTRIBUTION OF AVAILABLE DEPTHS AT THE TIME OF THE SURVEY AND IS NOT TO BE USED FOR NAVIGATION.
- SURVEY ACCURACY PERFORMANCE STANDARDS, QUALITY CONTROL, AND QUALITY ASSURANCE REQUIREMENTS WERE FOLLOWED DURING THIS SURVEY IN ACCORDANCE WITH USACE EM 1110-2-1003, HYDROGRAPHIC SURVEYING, 1 JAN 02.

LEGEND	
	MONUMENT
	LIGHTED BEACON
	GREEN DAY BEACON
	RED DAY BEACON
	RED LIGHTED BUOY
	GREEN LIGHTED BUOY
	CAN BUOY
	NUN BUOY
	TIDE STAFF
	PROJECT DEPTH

US Army Corps of Engineers
Jacksonville District
SAFETY ON THIS JOB
DEPENDS ON YOU

<p>DEPARTMENT OF THE ARMY JACKSONVILLE DISTRICT, CORPS OF ENGINEERS JACKSONVILLE, FLORIDA</p>	<p>PROJECT NO. 13-084</p>	<p>DATE 01-02 MAY 2013</p>	<p>SCALE AS SHOWN</p>	<p>DRAWING NO. 1</p>
<p>FT. PIERCE HARBOR ST. LUCIE COUNTY, FLORIDA EXAMINATION SURVEY FY13 30-FOOT PROJECT INDEX, LOCATION AND VICINITY MAP</p>				
<p>SHEET 01 OF 08</p>				



MATCHLINE SHEET NO. 03 STA. 30+00

AIDS TO NAVIGATION	PLANE COORDINATES		LATITUDE	LONGITUDE
	X	Y		
LT. BUOY-3 (0615)	882.841	1,142,245	27°28'27.07"	80°18'12.28"
LT. BUOY-4 (0513)	882.811	1,142,851	27°28'31.11"	80°18'12.58"

GUT-1
AZ-79-16-31



NOTES:
1. REFER TO SURVEY NO. 19-084.
2. SEE SHEET NO. 1 FOR SURVEY NOTES.

US Army Corps of Engineers
Jacksonville District

SAFETY ON THIS JOB
DEPENDS ON YOU

DEPARTMENT OF THE ARMY
JACKSONVILLE DISTRICT, CORPS OF ENGINEERS
JACKSONVILLE, FLORIDA

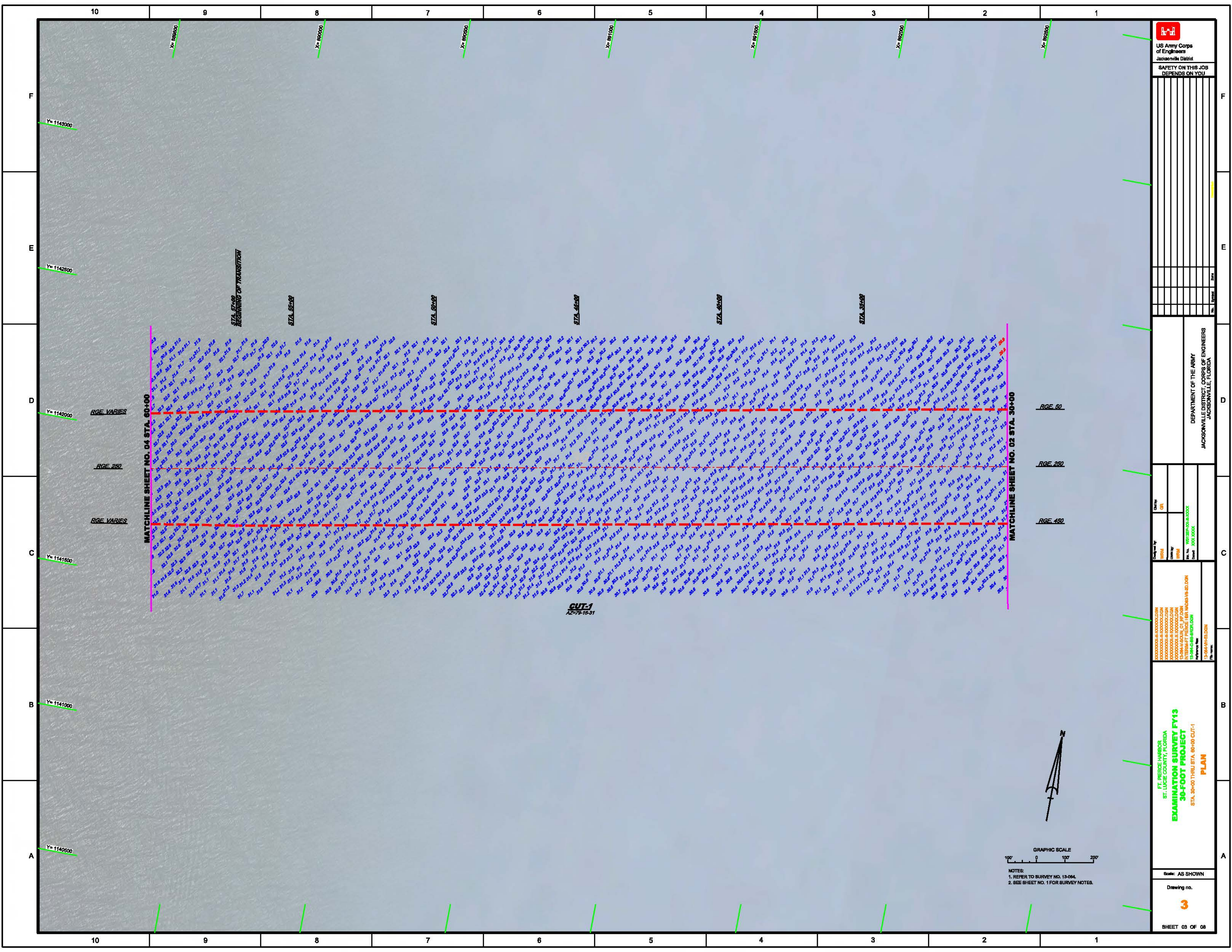
Checked by: **GR**
 Drawn by: **WRM**
 Date: **03/03/2010**
 File No.: **19-084-1142-001**
 Internal Project File: **19-084-1142-001**
 Reference File: **19-084-1142-001**

EXAMINATION SURVEY FY13
30-FOOT PROJECT
STA. 0+00 THRU STA. 30+00 CUT-1
PLAN

Scale: AS SHOWN

Drawing no. **2**

SHEET 02 OF 08



US Army Corps of Engineers
Jacksonville District
SAFETY ON THIS JOB
DEPENDS ON YOU

DEPARTMENT OF THE ARMY
JACKSONVILLE DISTRICT, CORPS OF ENGINEERS
JACKSONVILLE, FLORIDA

Checked by: GFL
Drawn by: WFM
Project No.: 13-044-H+3-001
Internal Project File: 13-044-H+3-001
Reference File: 13-044-H+3-001

FT. PERRY HARBOR
ST. LUCIE COUNTY, FLORIDA
**EXAMINATION SURVEY FY13
30-FOOT PROJECT**
STA. 30+00 THRU STA. 60+00 CUT-1
PLAN

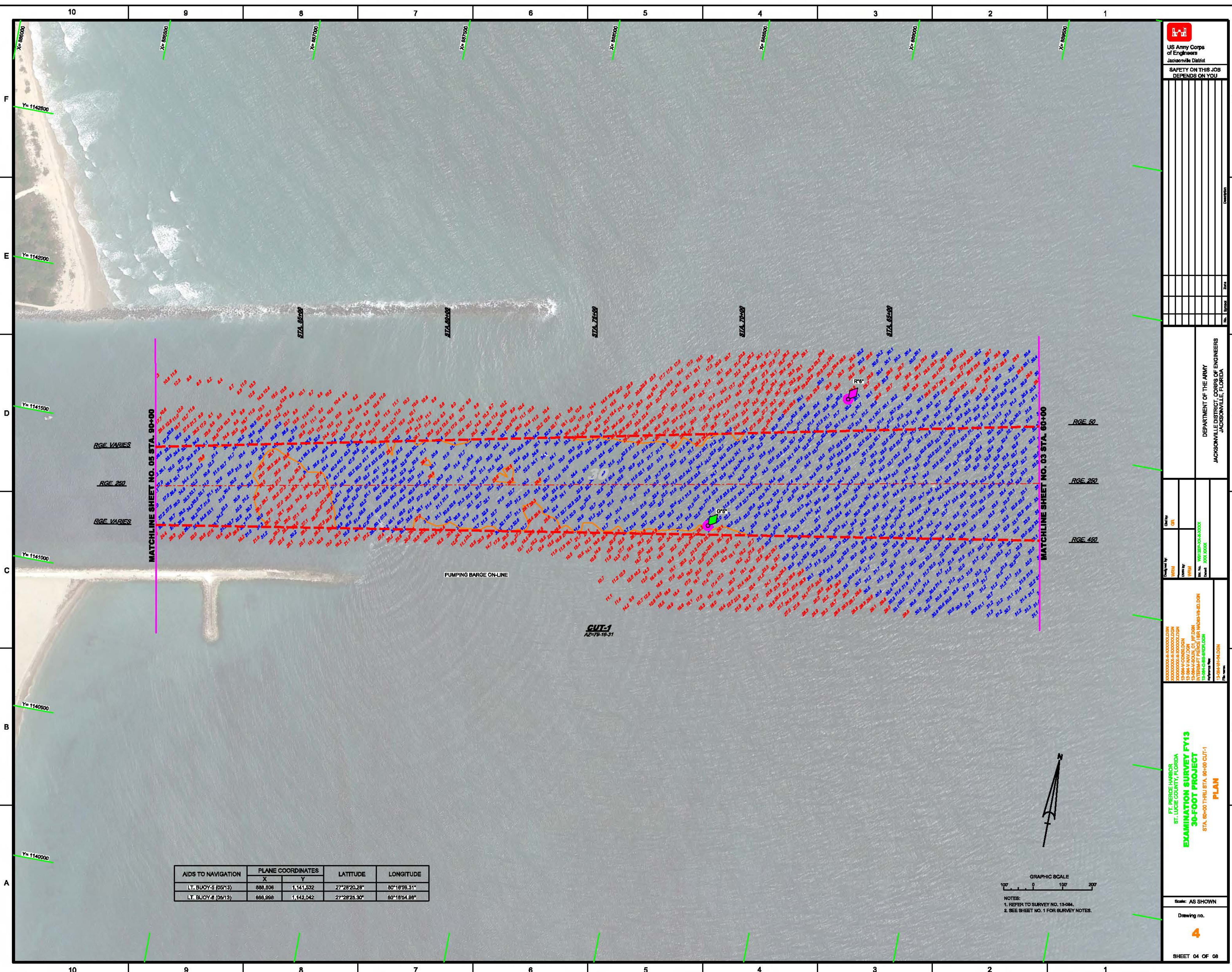


NOTES:
1. REFER TO SURVEY NO. 13-064.
2. SEE SHEET NO. 1 FOR SURVEY NOTES.

Scale: AS SHOWN

Drawing no.
3

SHEET 03 OF 08



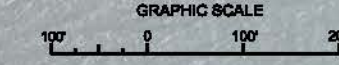
DEPARTMENT OF THE ARMY
JACKSONVILLE DISTRICT, CORPS OF ENGINEERS
JACKSONVILLE, FLORIDA

Checked by: GFL
Designed by: WMH
Created by: WMH
Plot File: M01263-00-3-0236
Contract: J031.XXXX
Reference File: 13-044-H4A.DGN
Plot Name:

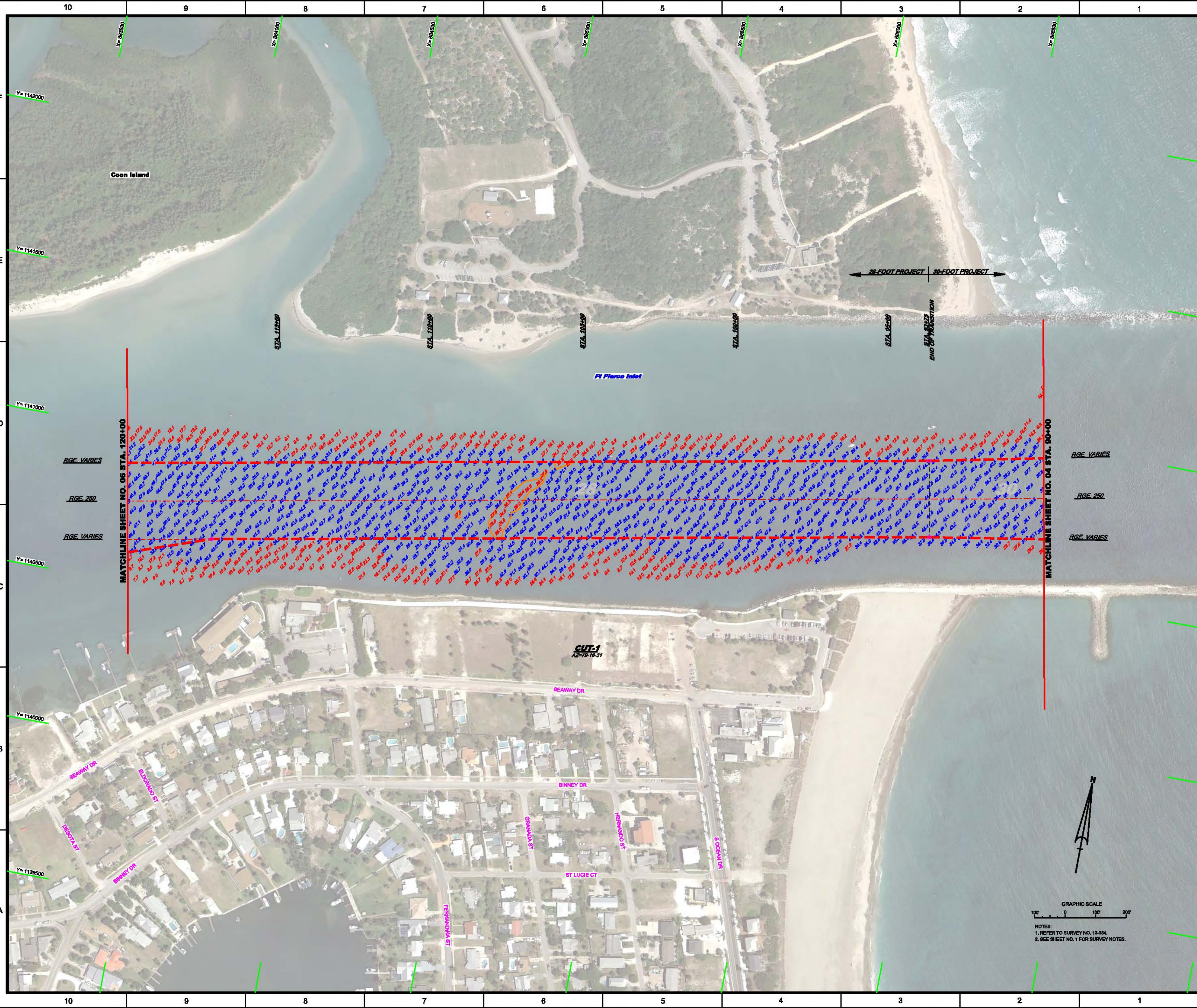
FT. WESPER HARBOR
ST. LUCIE COUNTY, FLORIDA
EXAMINATION SURVEY FY13
30-FOOT PROJECT
STA. 60+00 THRU STA. 90+00 CUT-1
PLAN

Scale: AS SHOWN
Drawing no.
4
SHEET 04 OF 08

AIDS TO NAVIGATION	PLANE COORDINATES		LATITUDE	LONGITUDE
	X	Y		
LT. BUOY-5 (05/13)	888,808	1,141,532	27°28'20.28"	80°18'58.31"
LT. BUOY-6 (05/13)	888,998	1,142,042	27°28'25.30"	80°18'54.88"



NOTES:
1. REFER TO SURVEY NO. 13-044,
2. SEE SHEET NO. 1 FOR SURVEY NOTES.



DEPARTMENT OF THE ARMY
JACKSONVILLE DISTRICT, CORPS OF ENGINEERS
JACKSONVILLE, FLORIDA

Checked by: GFL
Drawn by: WPM
Project No: 13-094-HAS-001
Internal Project File: 13-094-HAS-001
Reference File: 13-094-HAS-001

FT. PIERCE HARBOR
ST. LUCIE COUNTY, FLORIDA
EXAMINATION SURVEY FY13
30-FOOT PROJECT
PLAN
STA. 90+00 THRU STA. 120+00 CUT-1

Scale: AS SHOWN
Drawing no.
5
SHEET 05 OF 08

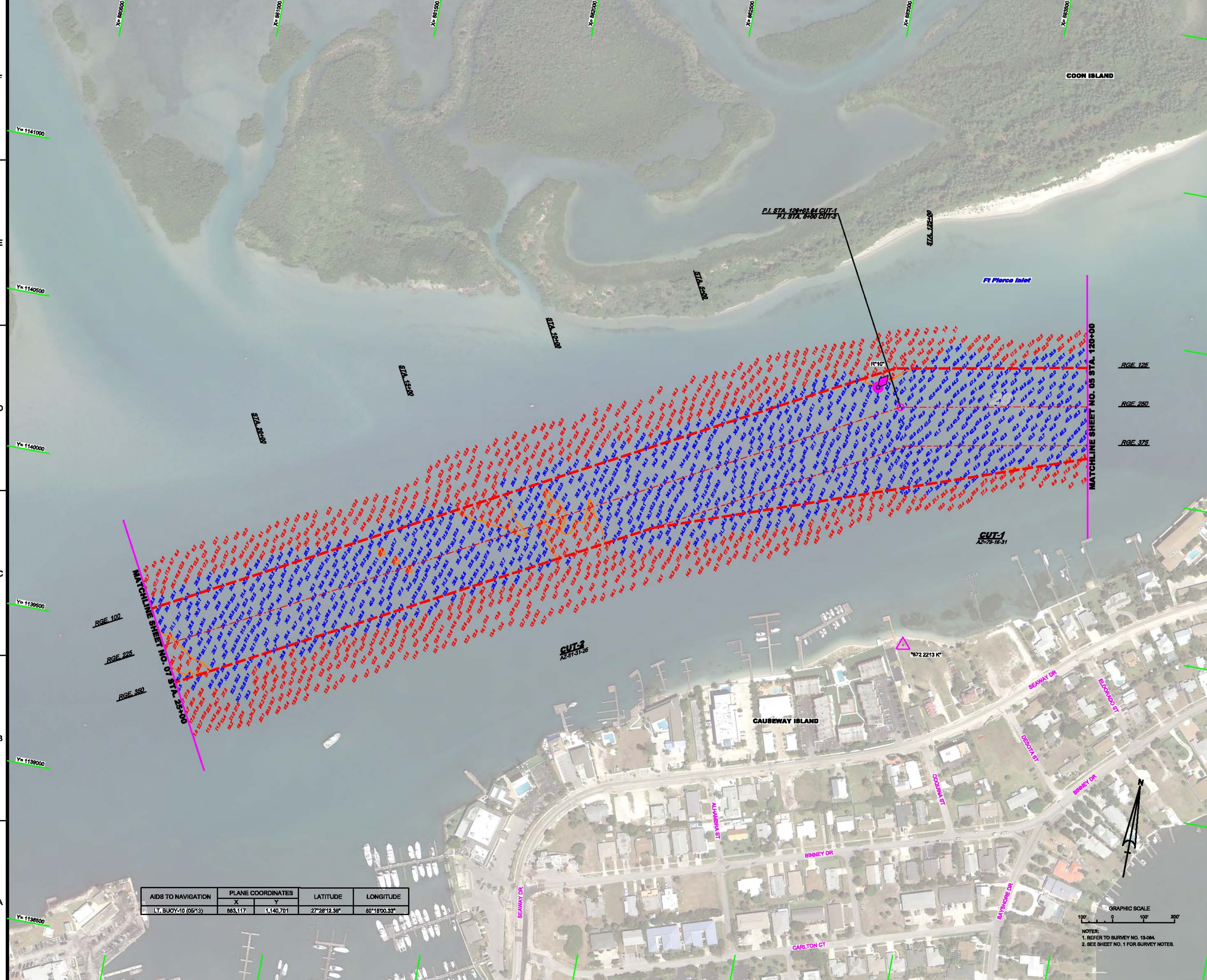
GRAPHIC SCALE
0 100 200
NOTES:
1. REFER TO SURVEY NO. 13-094.
2. SEE SHEET NO. 1 FOR SURVEY NOTES.

DEPARTMENT OF THE ARMY
JACKSONVILLE DISTRICT, CORPS OF ENGINEERS
JACKSONVILLE, FLORIDA

Checked by: GFL
Drawn by: WHM
Designed by: WHM
Project No.: 13-004-HAV-001
Internat Project: LBR 14035-V-00-001
Reference No.: 13-004-HAV-001

**FT. PIERCE HARBOR
ST. LUCIE COUNTY, FLORIDA
EXAMINATION SURVEY FY13
30-FOOT PROJECT
PLAN**

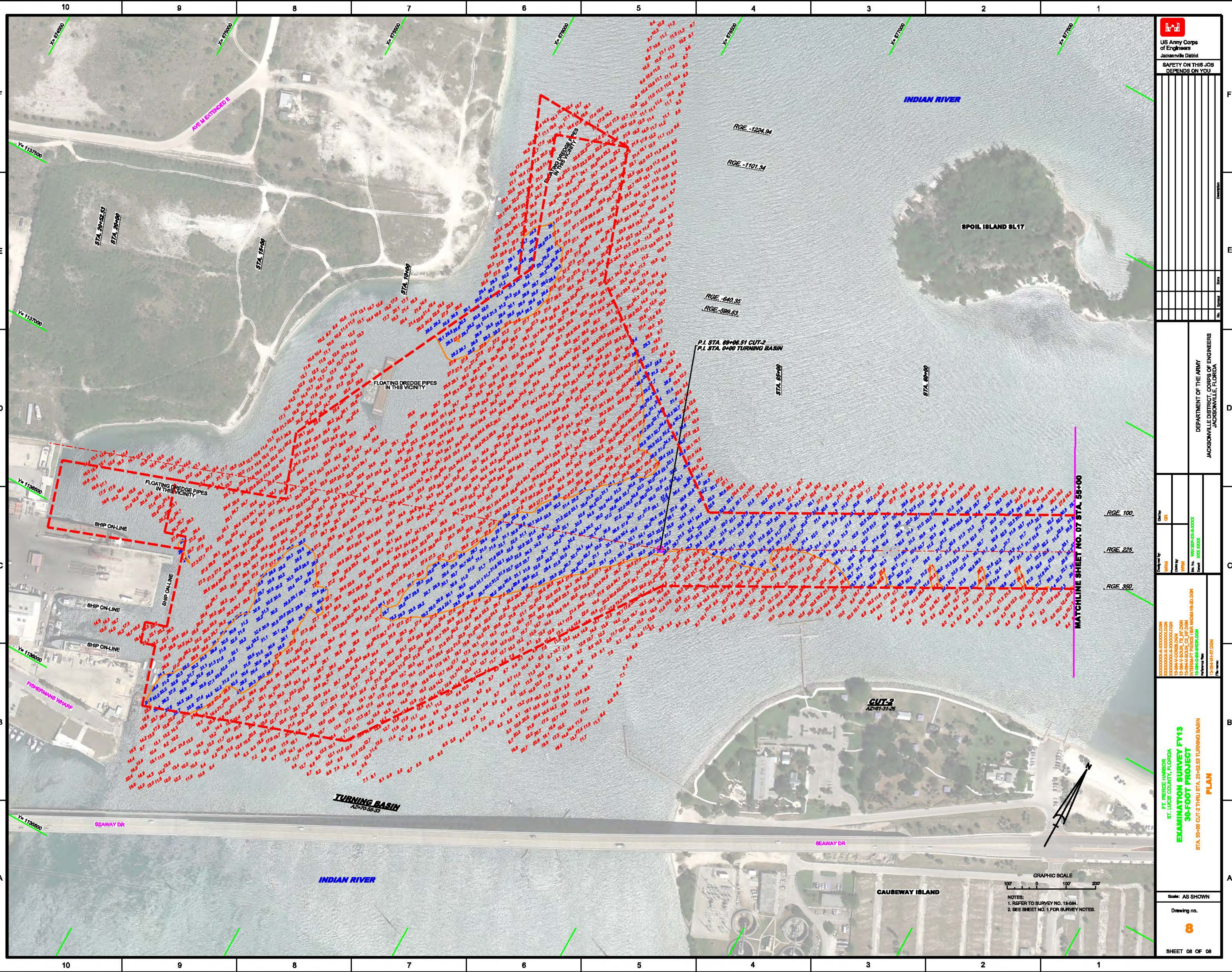
STA. 120+00 CUT-1 THRU STA. 25+00 CUT-2



AIDS TO NAVIGATION	PLANE COORDINATES		LATITUDE	LONGITUDE
	X	Y		
LT. BUOY-10 (05H3)	863,117	1,140,701	27°28'12.36"	80°18'00.33"



NOTES:
1. REFER TO SURVEY NO. 13-004.
2. SEE SHEET NO. 1 FOR SURVEY NOTES.



 US Army Corps of Engineers Jacksonville District SAFETY ON THIS JOB DEPENDS ON YOU	
DEPARTMENT OF THE ARMY JACKSONVILLE DISTRICT, CORPS OF ENGINEERS JACKSONVILLE, FLORIDA	
Checked by: GFL Drawn by: WFM Project: 13-094-H-07	Date: 12/10/13 Scale: AS SHOWN
PROJECT INFORMATION FT. PIERCE HARBOR ST. LUCIE COUNTY, FLORIDA EXAMINATION SURVEY FY13 30-FOOT PROJECT STA. 55+00 CUT-2 THROUGH STA. 20+50.83 TURNING BASIN PLAN	
SHEET 08 OF 08	

GRAPHIC SCALE
 100' 0 100' 200'
 NOTES:
 1. REFER TO SURVEY NO. 13-094.
 2. SEE SHEET NO. 1 FOR SURVEY NOTES.

MATCHLINE SHEET NO. 07 STA. 55+00

RGE 100.
 RGE 225.
 RGE 350.