













AIDS TO NAVIGATION	PLANE COORDINATES		LATITUDE	LONGITUDE
	X	Y		
DBN-13 (02/13)	887,877	773,725	28°27'44.30"	81°57'50.02"
LT-15 (02/13)	888,049	772,953	28°27'38.68"	81°57'38.22"
SIGN (02/13)	869,078	773,080	28°27'37.91"	81°57'37.89"

US Army Corps of Engineers  
Jacksonville District  
SAFETY ON THIS JOB  
DEPENDS ON YOU

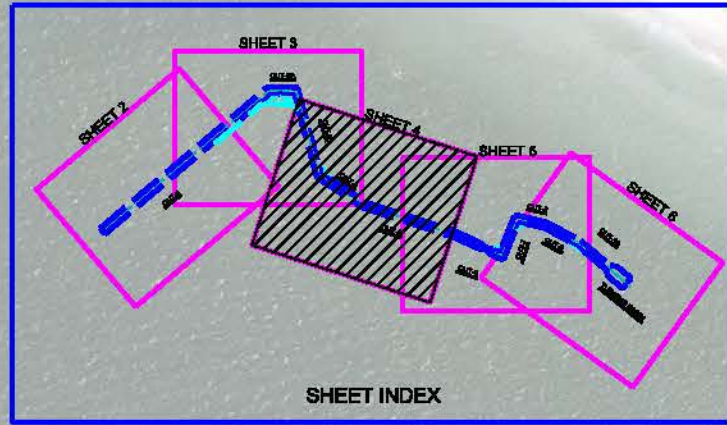
---

DEPARTMENT OF THE ARMY  
JACKSONVILLE DISTRICT, CORPS OF ENGINEERS  
JACKSONVILLE, FLORIDA

Checked by: DVT  
Drawn by: WPM  
Project: 13-044-H-804-L001  
Sheet: 04 OF 06

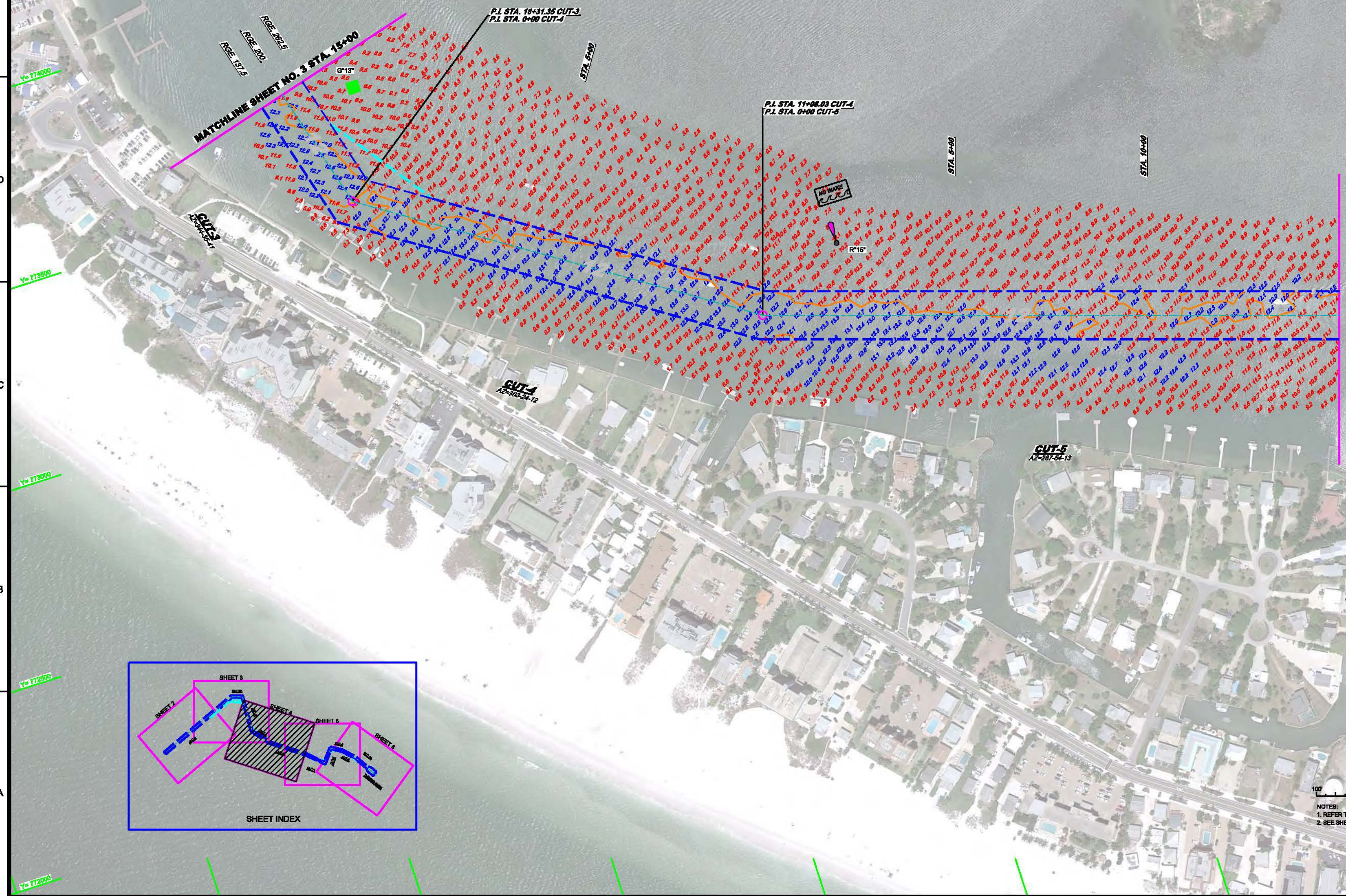
PROJECT CONDITION SURVEY FY13  
11 & 12-FOOT PROJECT  
PLAN  
STA. 19+00 CUT-3 THRU STA. 19+00 CUT-6

Scale: AS SHOWN  
Drawing no. 4  
SHEET 04 OF 06



GRAPHIC SCALE  
100' 0 100' 200'

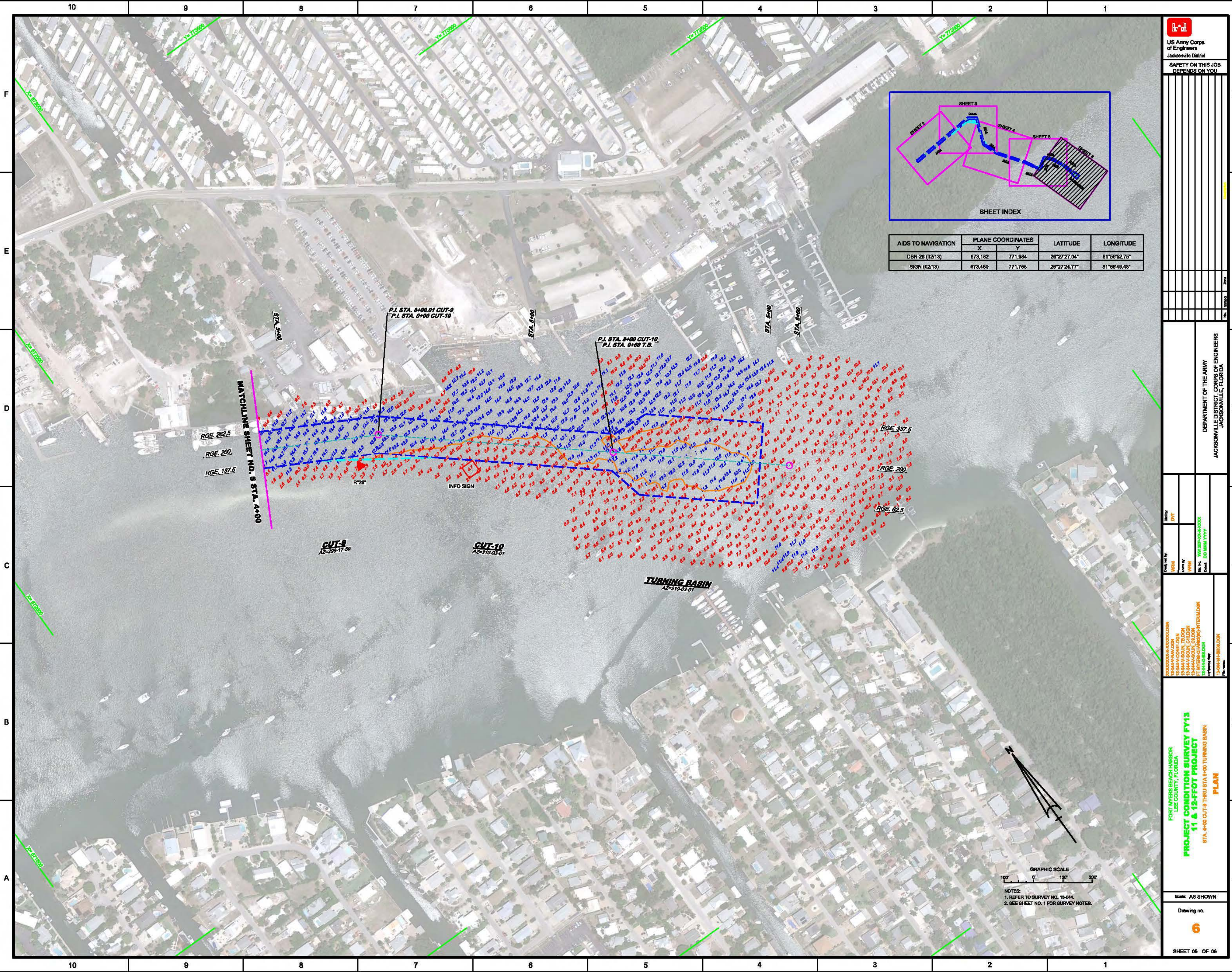
NOTES:  
1. REFER TO SURVEY NO. 13-044.  
2. SEE SHEET NO. 1 FOR SURVEY NOTES.











US Army Corps of Engineers  
Jacksonville District  
SAFETY ON THIS JOB  
DEPENDS ON YOU

AIDS TO NAVIGATION	PLANE COORDINATES		LATITUDE	LONGITUDE
	X	Y		
DBN-26 (02/13)	673,182	771,984	28°27'27.04"	81°58'52.76"
SIGN (02/13)	673,480	771,765	28°27'24.77"	81°58'48.48"

DEPARTMENT OF THE ARMY  
JACKSONVILLE DISTRICT, CORPS OF ENGINEERS  
JACKSONVILLE, FLORIDA

PROJECT CONDITION SURVEY FY13  
11 & 12-FOOT PROJECT  
PLAN  
STA. 4+00 CUT-9 THRU STA 6+00 TURNING BASIN

GRAPHIC SCALE  
0 100 200  
NOTES:  
1. REFER TO SURVEY NO. 13-04.  
2. SEE SHEET NO. 1 FOR SURVEY NOTES.

Scale: AS SHOWN  
Drawing no. 6  
SHEET 06 OF 06