

TAMPA HARBOR UPPER SPARKMAN AND YBOR CHANNELS HILLSBOROUGH COUNTY, FLORIDA EXAMINATION SURVEY FY13 34-FOOT PROJECT

SURVEY NOTES

- REFER TO SURVEY NO. 13-028.
- DEPTHS DEPICTED BY THIS SURVEY ARE REFERENCED TO MLLW, TIDAL EPOCH 1983-2001 AS REPORTED BY THE NATIONAL OCEANIC AND ATMOSPHERIC ADMINISTRATION (NOAA).
- TIDAL REDUCTIONS WERE OBTAINED UTILIZING A REAL-TIME KINEMATIC (RTK) GPS AND REFERENCED TO MLLW UTILIZING A HYPACK KINEMATIC TIDE DATUM (KTD) MODEL NAMED "SPC-FL-WEST-2010-12-07.KTD"
- ALL ELEVATIONS ARE BELOW THE CHART DATUM UNLESS PRECEDED BY A (+) SIGN.
- PLANE COORDINATES ARE BASED ON THE TRANSVERSE MERCATOR PROJECTION FOR THE WEST ZONE OF FLORIDA AND REFERENCED TO NORTH AMERICAN DATUM OF 1983 (NAD83).
- ALL AZIMUTHS ARE GRID; RECKONED CLOCKWISE FROM SOUTH.
- ALL STATIONING REFERS TO THE CENTERLINE OF THE CHANNEL.
- THIS SURVEY WAS PERFORMED USING REAL-TIME KINEMATIC GPS POSITIONING WITH THE FOLLOWING REFERENCE BASE LOCATIONS:
REFERENCE BASE LOCATED AT "Q 261" (NGS PID# AG6024)
TIDE STAFF LOCATED FROM "Q-261"
- VERTICAL MEASUREMENTS WERE MADE USING A ROSS 835 SMART-SOUNDER DUAL FREQUENCY 28/200 KHZ SINGLE-BEAM TRANSDUCER. SOUNDINGS SHOWN ARE IN LOW FREQUENCY.
- AIDS TO NAVIGATION WERE LOCATED DURING THIS SURVEY.
- THE INFORMATION DEPICTED ON THIS MAP REPRESENTS THE RESULTS OF SURVEYS MADE ON THE DATES INDICATED ABOVE AND CAN ONLY BE CONSIDERED AS INDICATING THE GENERAL CONDITIONS AT THAT TIME. THIS CHART IS SOLELY FOR THE DISTRIBUTION OF AVAILABLE DEPTHS AT THE TIME OF THE SURVEY AND IS NOT TO BE USED FOR NAVIGATION.
- SURVEY ACCURACY PERFORMANCE STANDARDS, QUALITY CONTROL, AND QUALITY ASSURANCE REQUIREMENTS WERE FOLLOWED DURING THIS SURVEY IN ACCORDANCE WITH USACE EM 1110-2-1003, HYDROGRAPHIC SURVEYING, 1 JAN 02.

LEGEND	
	MONUMENT
	LIGHTED BEACON
	GREEN DAYBEACON
	RED DAYBEACON
	RED LIGHTED BUOY
	GREEN LIGHTED BUOY
	CAN BUOY
	NUN BUOY
	TIDE STAFF
	PROJECT DEPTH

US Army Corps of Engineers
Jacksonville District
SAFETY ON THIS JOB
DEPENDS ON YOU

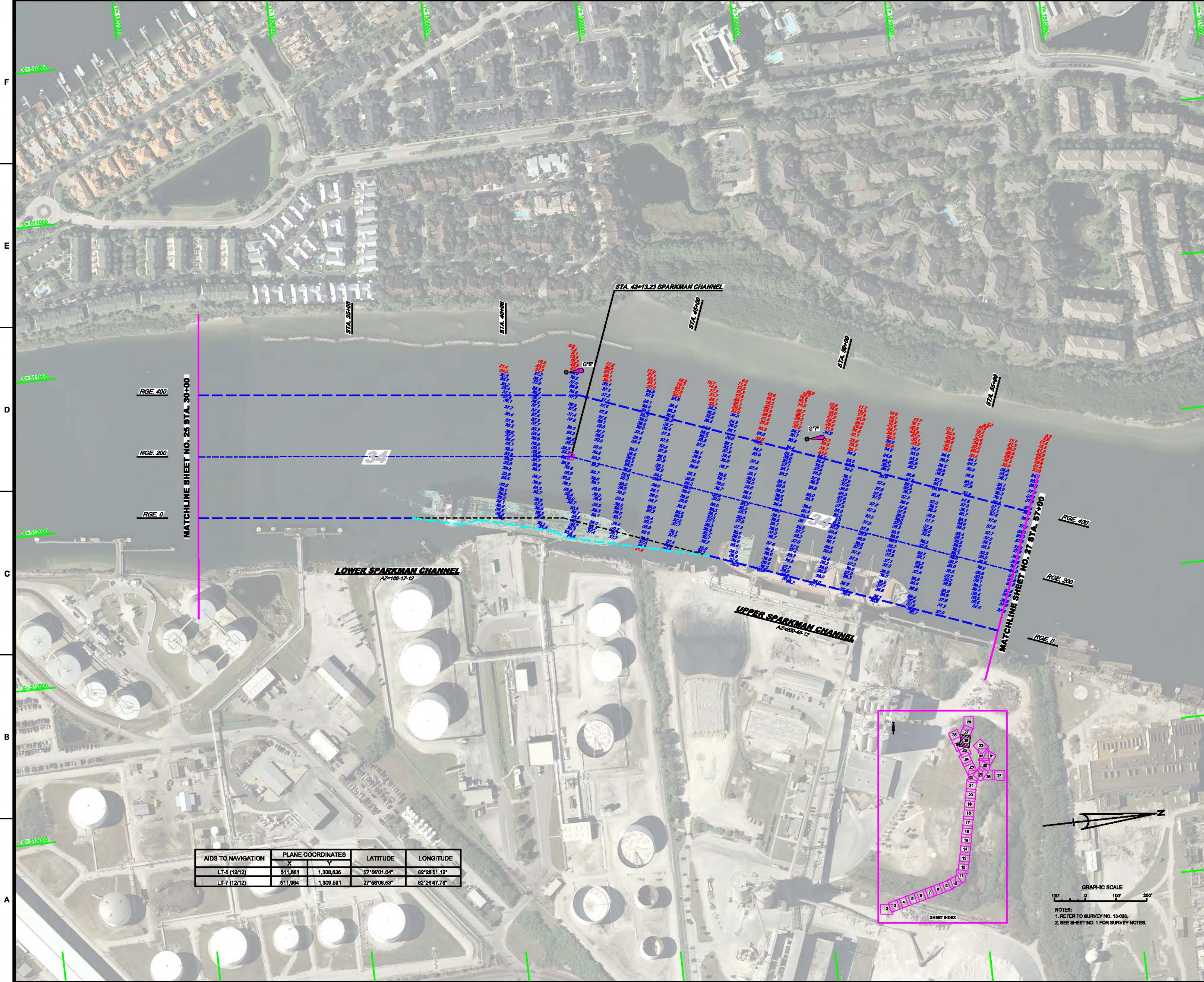
DEPARTMENT OF THE ARMY
JACKSONVILLE DISTRICT, CORPS OF ENGINEERS
JACKSONVILLE, FLORIDA

DESIGNED BY: WPM
CHECKED BY: WPM
DATE: 12/15/12

PROJECT: TAMPA HARBOR C-SPAC02.DGN
FILE NAME: 13-028-VI-SHT1.DGN

TAMPA HARBOR, FLORIDA
EXAMINATION SURVEY FY13
34-FOOT PROJECT
INDEX, LOCATION AND VICINITY
MAP

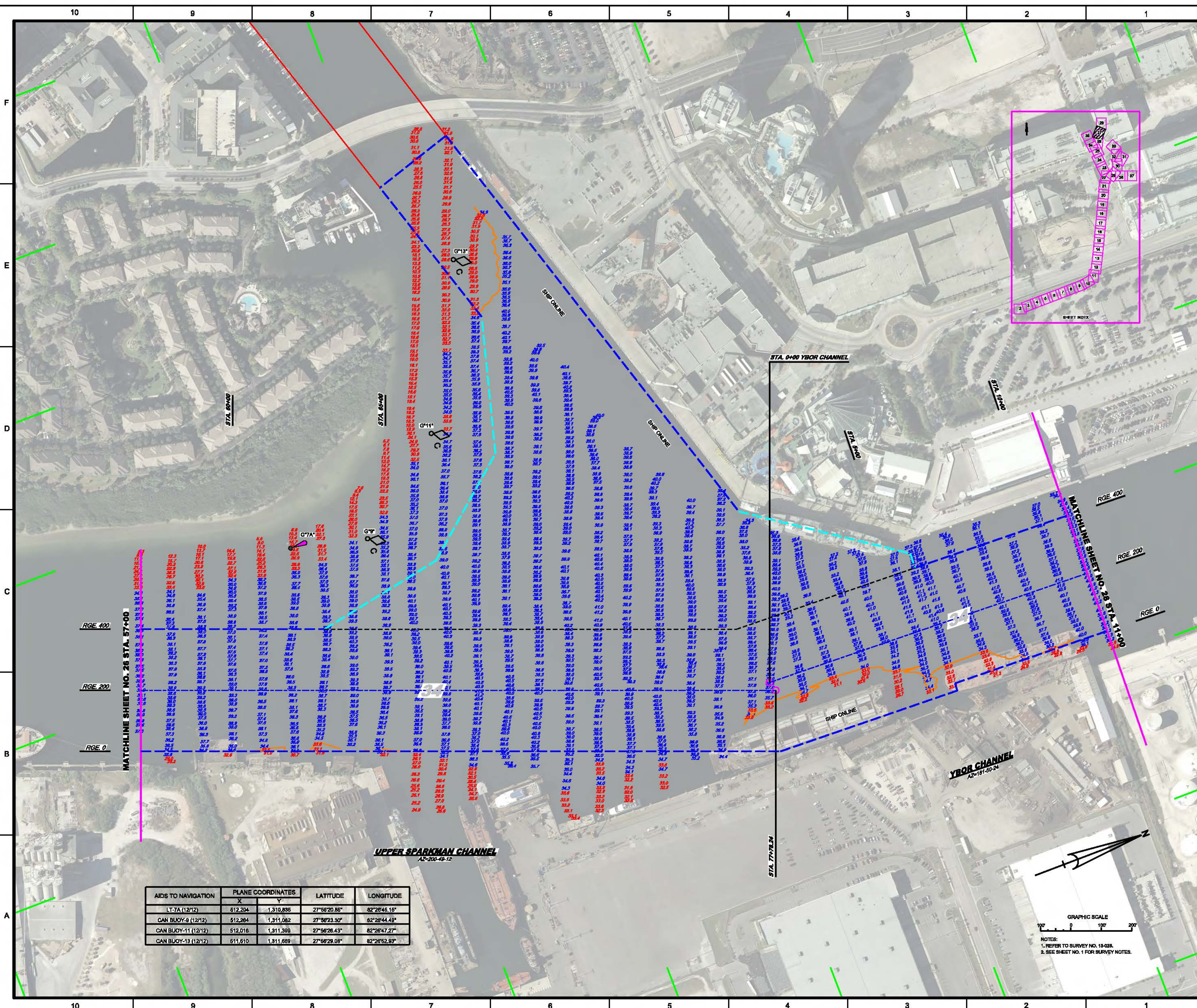
Scale: AS SHOWN
Drawing no. 1/4
SHEET 01 OF 54



AIDS TO NAVIGATION	PLANE COORDINATES		LATITUDE	LONGITUDE
	X	Y		
LT-5 (12/12)	511,661	1,308,836	27°56'01.04"	82°28'51.12"
LT-7 (12/12)	611,984	1,309,681	27°56'08.63"	82°29'47.78"

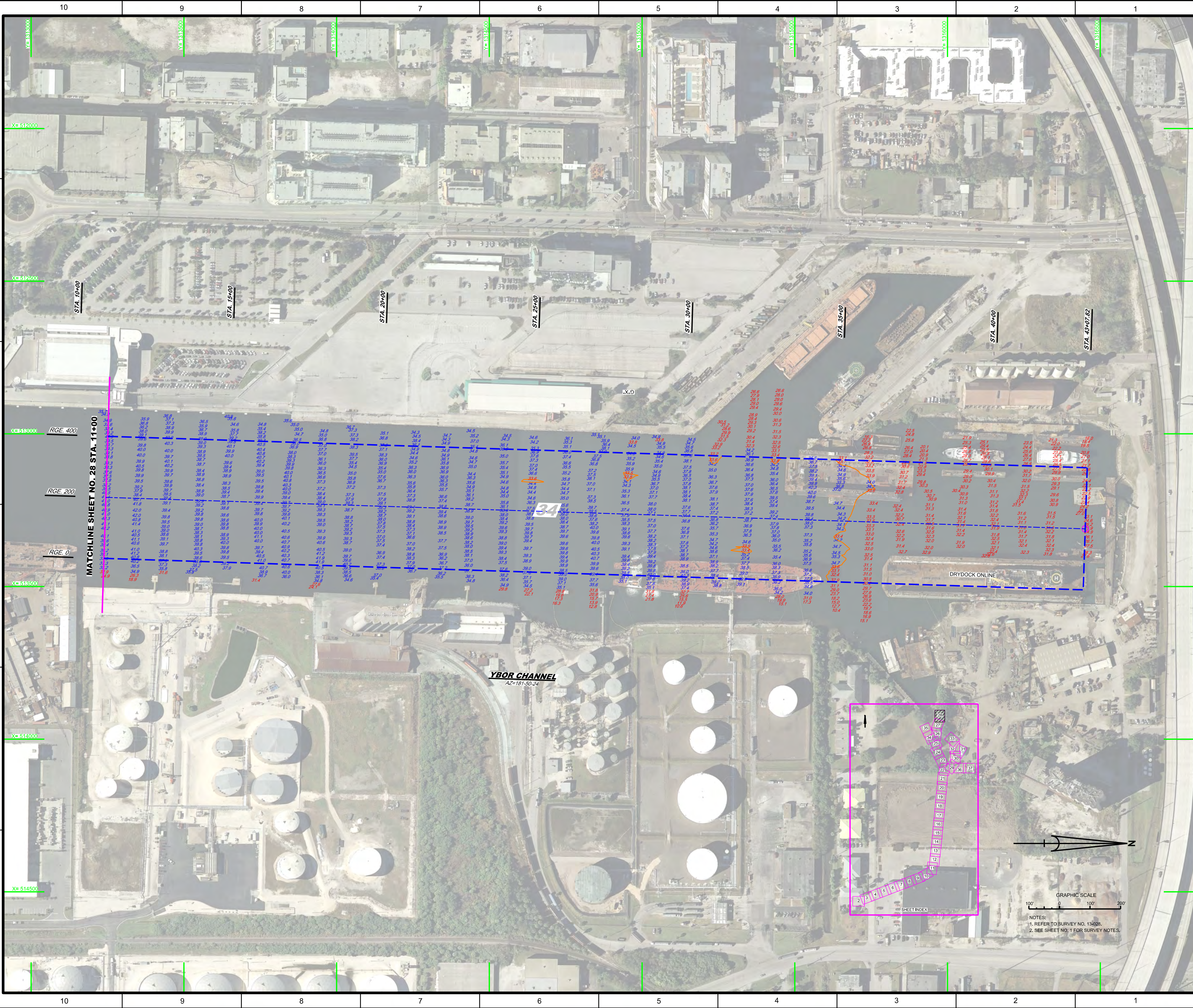


GRAPHIC SCALE
 100' 0 100' 200'
 NOTES:
 1. REFER TO SURVEY NO. 13-028.
 2. SEE SHEET NO. 1 FOR SURVEY NOTES.



AIDS TO NAVIGATION	PLANE COORDINATES		LATITUDE	LONGITUDE
	X	Y		
LT-7A (12/12)	612,204	1,310,836	27°58'20.86"	82°28'46.16"
CAN BUOY-8 (12/12)	512,264	1,311,082	27°58'23.30"	82°28'44.48"
CAN BUOY-11 (12/12)	512,016	1,311,399	27°58'26.43"	82°28'47.27"
CAN BUOY-13 (12/12)	611,610	1,311,689	27°58'28.08"	82°28'52.53"

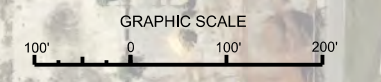
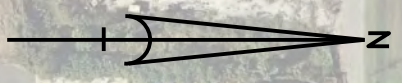
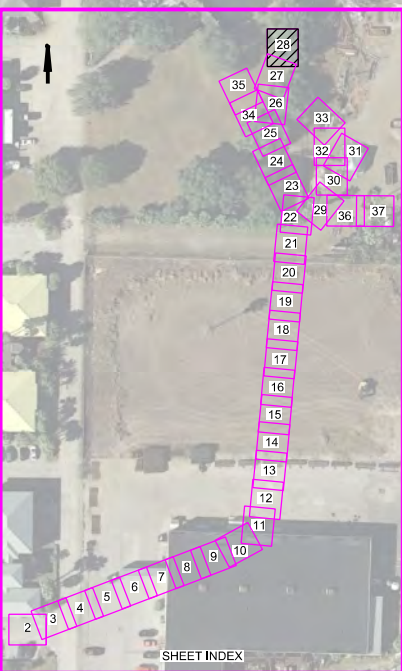
GRAPHIC SCALE
 0 100 200
 NOTES:
 1. REFER TO SURVEY NO. 13-028.
 2. SEE SHEET NO. 1 FOR SURVEY NOTES.



MATCHLINE SHEET NO. 28 STA. 11+00

YBOR CHANNEL
AZ=181-50-24

DRYDOCK ONLINE



NOTES:
1. REFER TO SURVEY NO. 13028.
2. SEE SHEET NO. 1 FOR SURVEY NOTES.

US Army Corps
of Engineers
Jacksonville District

**SAFETY ON THIS JOB
DEPENDS ON YOU**

DESIGNED BY: WRM
CHECKED BY: GRL
DRAWN BY: WRM
DATE: 02/01/2013
PROJECT: TAMPA HARBOR-C-34-FOOT CHANNEL
SHEET: 28 OF 54

DEPARTMENT OF THE ARMY
JACKSONVILLE DISTRICT, CORPS OF ENGINEERS
JACKSONVILLE, FLORIDA

TAMPA HARBOR, FLORIDA
**EXAMINATION SURVEY FY13
34-FOOT PROJECT**
STA. 11+00 THRU STA. 43+07.82, YBOR CHANNEL

PLAN

Scale: AS SHOWN

Drawing no.
4/4

SHEET 28 OF 54