

AIDS TO NAVIGATION	PLANE COORDINATES		LATITUDE	LONGITUDE
	X	Y		
SIGN (01/13)	495,181	2,204,481	30°23'47.31"	81°30'38.28"

**US Army Corps of Engineers**  
 Jacksonville District  
**SAFETY ON THIS JOB DEPENDS ON YOU**

---

DEPARTMENT OF THE ARMY  
 JACKSONVILLE DISTRICT, CORPS OF ENGINEERS  
 JACKSONVILLE, FLORIDA

---

13-018-00-SUB-DIGEN  
 13-018-00-COR-DIGEN  
 13-018-00-CON-DIGEN  
 13-018-00-MAV-DIGEN

---

**1st QUARTER EXAMINATION SURVEY FY13**  
**30, 34, 38, 40, & 42 - FOOT PROJECT**  
**STA. 14+00 THRU STA. 38+00 CUT - A**  
**PLAN**

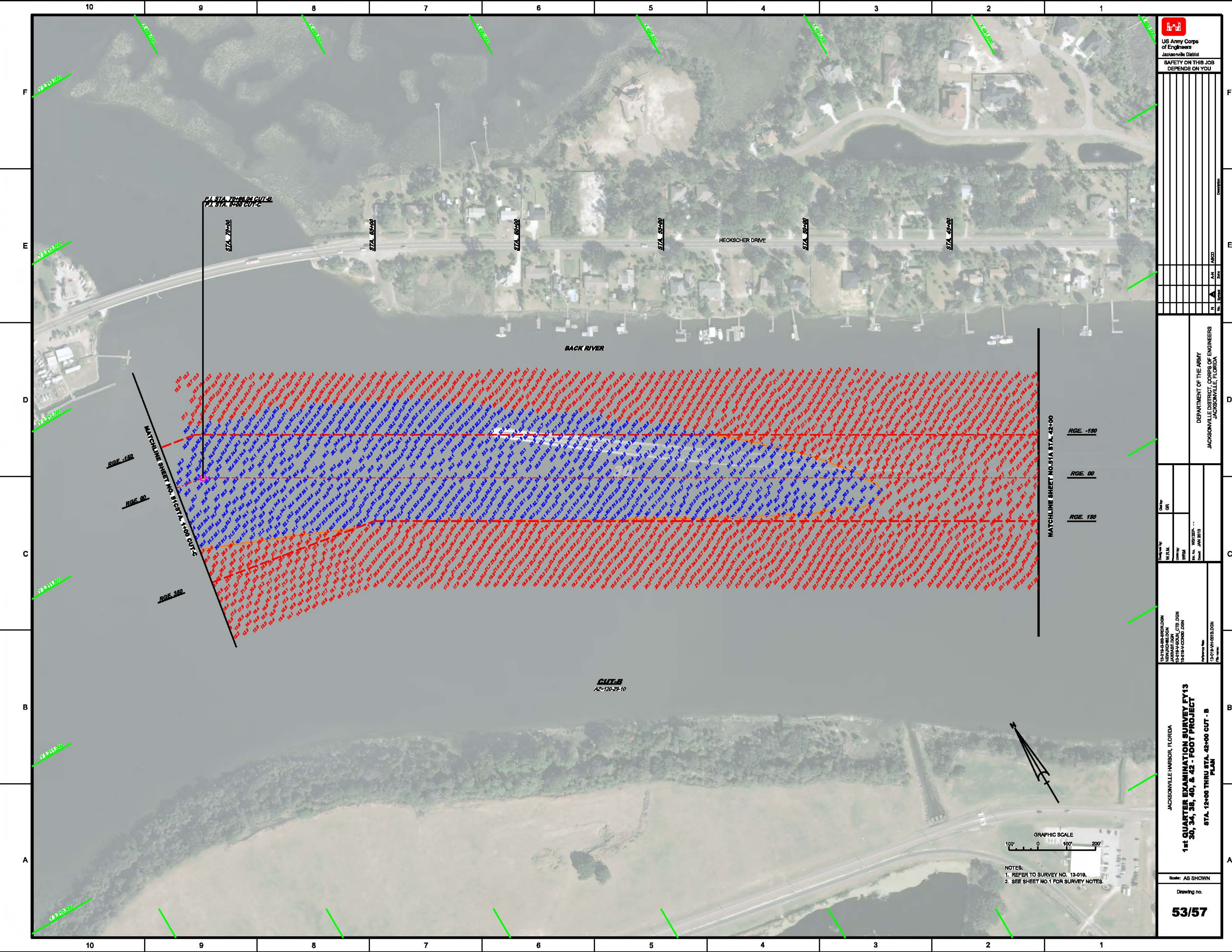
---

Scale: AS SHOWN  
 Drawing no.  
**50/57**

---

NOTES:  
 1. REFER TO SURVEY NO. 13-018.  
 2. SEE SHEET NO.1 FOR SURVEY NOTES.





US Army Corps of Engineers  
 Jacksonville District  
 SAFETY ON THIS JOB  
 DEPENDS ON YOU

NO.	REVISION	DATE	BY	CHKD
1				
2				
3				
4				
5				
6				
7				
8				
9				
10				

DEPARTMENT OF THE ARMY  
 JACKSONVILLE DISTRICT, CORPS OF ENGINEERS  
 JACKSONVILLE, FLORIDA

NO.	REVISION	DATE	BY	CHKD

13-016-08-SIBOLDSON  
 NAWAC@USACE.MIL  
 13-016-08-SIBOLDSON, CTB DGN  
 13-016-08-SIBOLDSON, JOHN  
 13-016-08-SIBOLDSON, JOHN  
 Date Plotted: 10/11/2013  
 Plot Scale: 1"=50'

JACKSONVILLE HARBOR, FLORIDA  
 1st QUARTER EXAMINATION SURVEY FY13  
 30, 34, 38, 40, & 42 - FOOT PROJECT  
 PLAN  
 STA. 12+00 THRU STA. 42+00 CUT - B

Scale: AS SHOWN  
 Drawing no.  
**53/57**

MATCHLINE SHEET NO. 51A STA. 42+00  
 RGE. -150  
 RGE. 00  
 RGE. 150

P.I. STA. 10+85.04 CUT-B  
 P.I. STA. 0+00 CUT-C

STA. 70+00

STA. 65+00

STA. 60+00

STA. 55+00

STA. 50+00

STA. 45+00

HECKSCHER DRIVE

BACK RIVER

RGE. -150

RGE. 00

RGE. 150

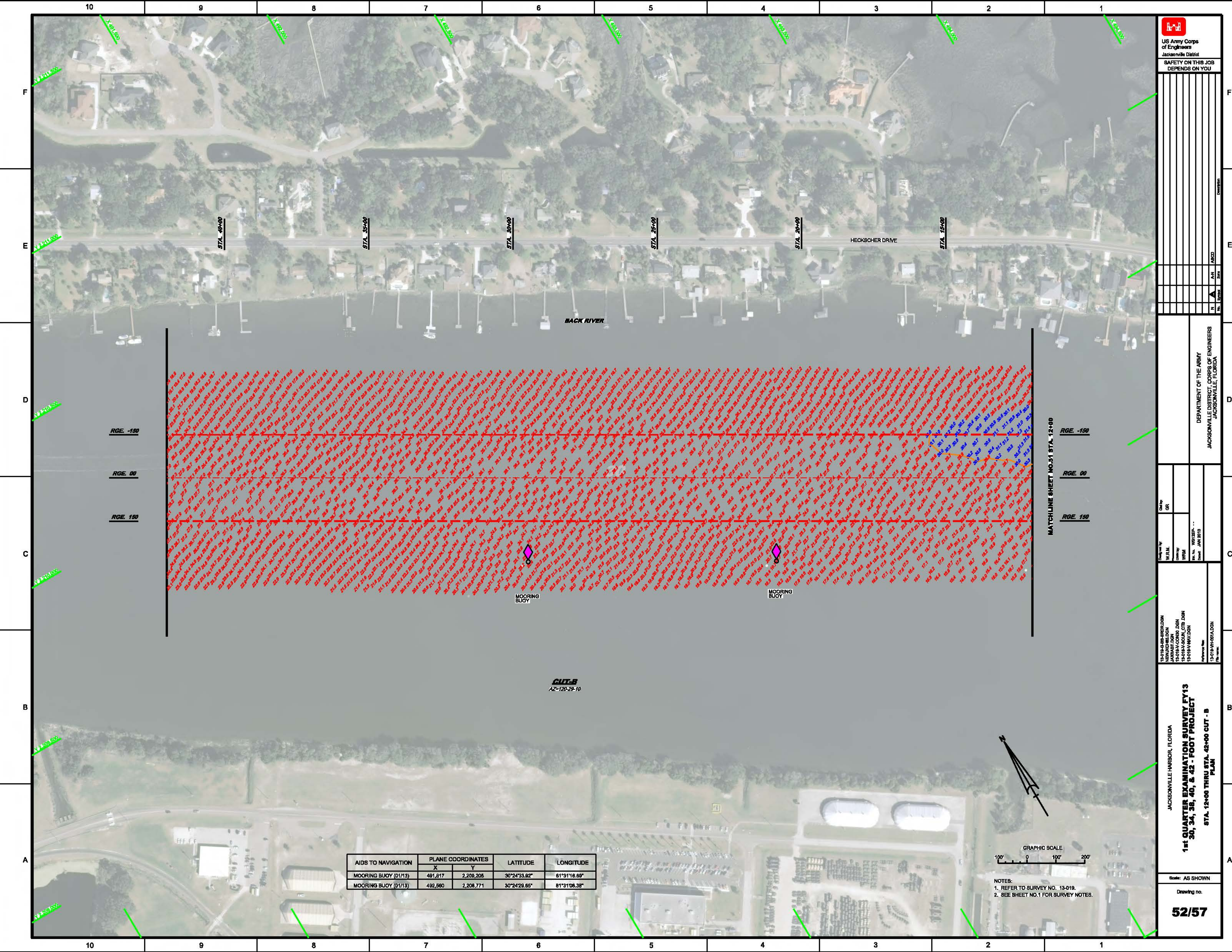
MATCHLINE SHEET NO. 51C STA. 1+00 CUT-C

CUT-B  
 AZ=120-29-10



NOTES:  
 1. REFER TO SURVEY NO. 13-016.  
 2. SEE SHEET NO.1 FOR SURVEY NOTES.





**US Army Corps of Engineers**  
 Jacksonville District  
 SAFETY ON THIS JOB  
 DEPENDS ON YOU


DEPARTMENT OF THE ARMY  
 JACKSONVILLE DISTRICT, CORPS OF ENGINEERS  
 JACKSONVILLE, FLORIDA

Drawn by: W.R.M.  
 Checked by: WRM  
 Date: JAN 2013

13-019-00-SIB/DON  
 13-019-00-COM/DON  
 13-019-00-AUX/CIB/DON  
 13-019-00-AMV/DON

JACKSONVILLE HARBOR, FLORIDA  
**1st QUARTER EXAMINATION SURVEY FY13**  
**30, 34, 38, 40, & 42 - FOOT PROJECT**  
 STA. 12+00 THRU STA. 42+00 CUT - B  
 PLAN

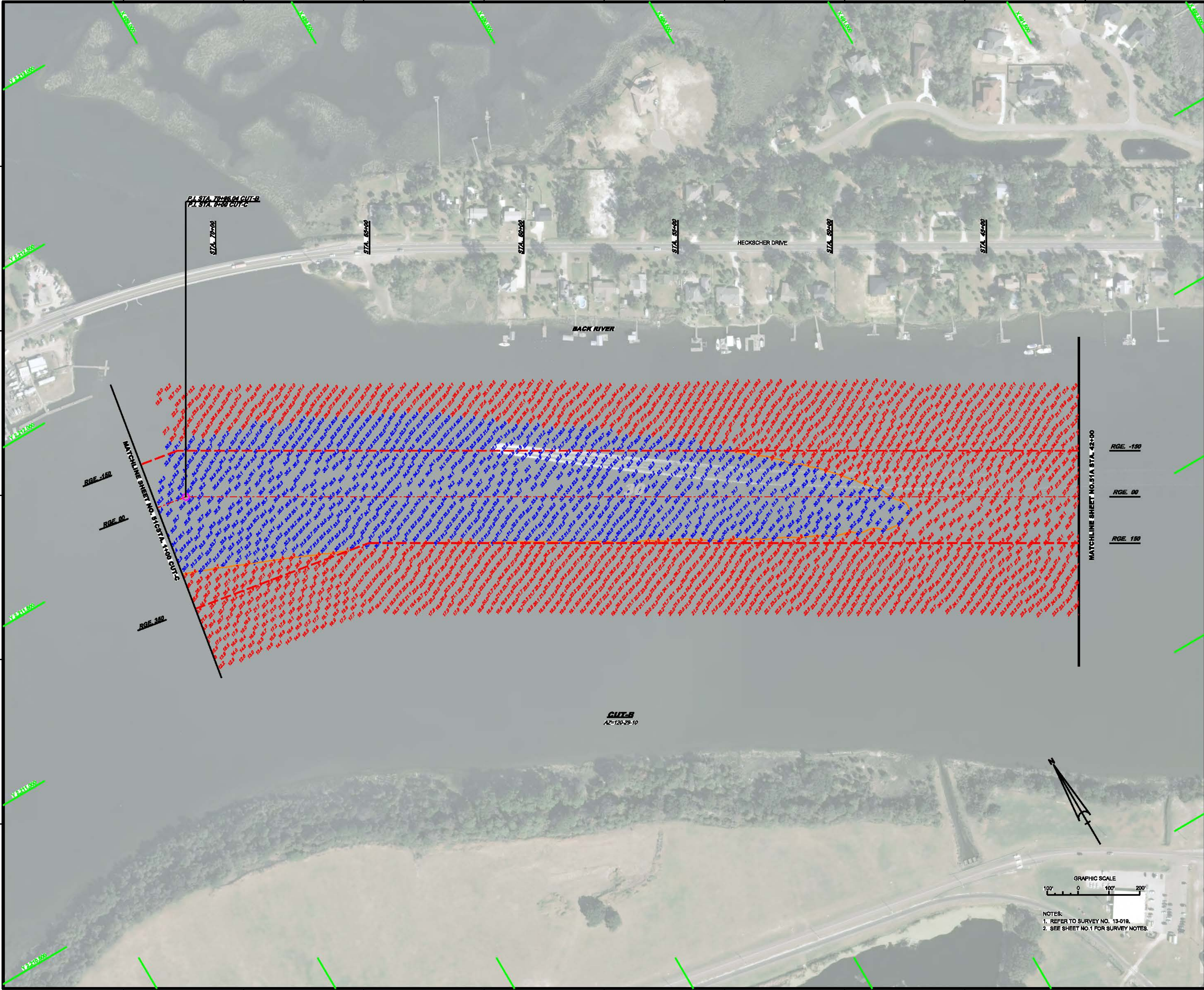
Scale: AS SHOWN  
 Drawing no.  
**52/57**

AIDS TO NAVIGATION	PLANE COORDINATES		LATITUDE	LONGITUDE
	X	Y		
MOORING BUOY (0113)	481,817	2,208,205	30°24'33.92"	81°31'16.89"
MOORING BUOY (0113)	492,580	2,208,771	30°24'28.85"	81°31'08.38"



NOTES:  
 1. REFER TO SURVEY NO. 13-019.  
 2. SEE SHEET NO.1 FOR SURVEY NOTES.





**US Army Corps of Engineers**  
Jacksonville District  
SAFETY ON THIS JOB  
DEPENDS ON YOU

NO.	DATE	BY	DESCRIPTION

DEPARTMENT OF THE ARMY  
JACKSONVILLE DISTRICT, CORPS OF ENGINEERS  
JACKSONVILLE, FLORIDA

Checked by: W.R.J. WRM Date: JAN 2013	Drawn by: W.R.M. Date: JAN 2013
--	---------------------------------------

13-018-08-SIBOLDON  
MEMPHIS  
13-018-08-SIBOLDON, CTS DGN  
13-018-08-SIBOLDON, JOHN

13-018-08-SIBOLDON  
13-018-08-SIBOLDON, JOHN

JACKSONVILLE HARBOR, FLORIDA

**1st QUARTER EXAMINATION SURVEY FY13**  
**30, 34, 38, 40, & 42 - FOOT PROJECT**

PLAN  
STA. 12+00 THRU STA. 42+00 CUT - B

Scale: AS SHOWN

Drawing no.  
**53/57**

GRAPHIC SCALE  
100' 0 100' 200'

NOTES:  
1. REFER TO SURVEY NO. 13-018.  
2. SEE SHEET NO.1 FOR SURVEY NOTES.

**CUT-B**  
AZ=120-29-10

RGE -150  
RGE 00  
RGE 150

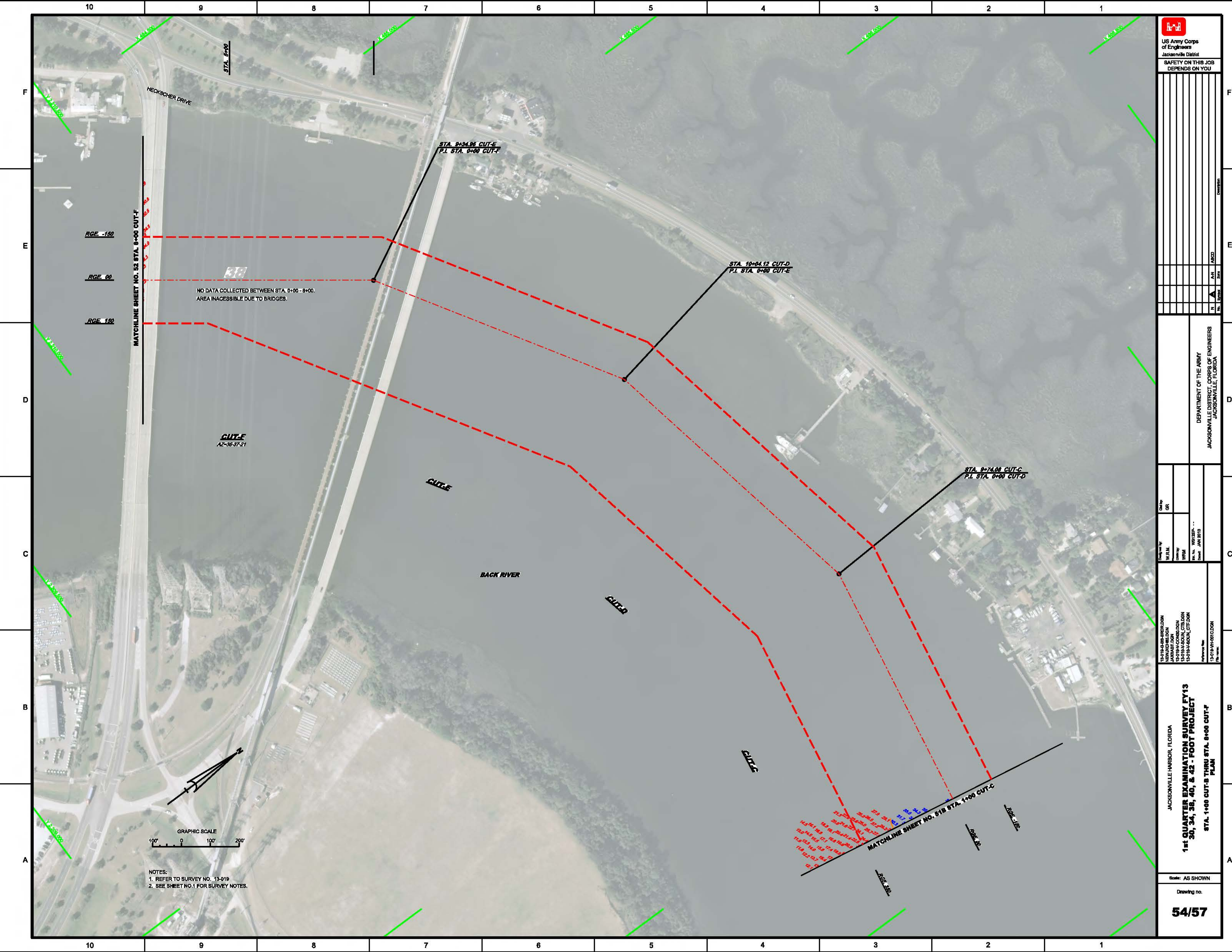
MATCHLINE SHEET NO. 51A STA. 42+00

MATCHLINE SHEET NO. 51C STA. 1+00 CUT-C

RGE -150  
RGE 00  
RGE 150

MATCHLINE SHEET NO. 51A STA. 42+00





DEPARTMENT OF THE ARMY  
 JACKSONVILLE DISTRICT, CORPS OF ENGINEERS  
 JACKSONVILLE, FLORIDA

JACKSONVILLE HARBOR, FLORIDA  
**1st QUARTER EXAMINATION SURVEY FY13  
 30, 34, 38, 40, & 42 - FOOT PROJECT**  
 STA. 1+00 CUT-B THRU STA. 8+00 CUT-F  
 PLAN

MATCHLINE SHEET NO. 53 STA. 8+00 CUT-F

NO DATA COLLECTED BETWEEN STA. 0+00 - 8+00.  
 AREA INACCESSIBLE DUE TO BRIDGES.

GRAPHIC SCALE  
 100' 0 100' 200'

NOTES:  
 1. REFER TO SURVEY NO. 13-019  
 2. SEE SHEET NO.1 FOR SURVEY NOTES.



10 9 8 7 6 5 4 3 2 1

F  
E  
D  
C  
B  
A

US Army Corps of Engineers  
Jacksonville District  
SAFETY ON THIS JOB DEPENDS ON YOU

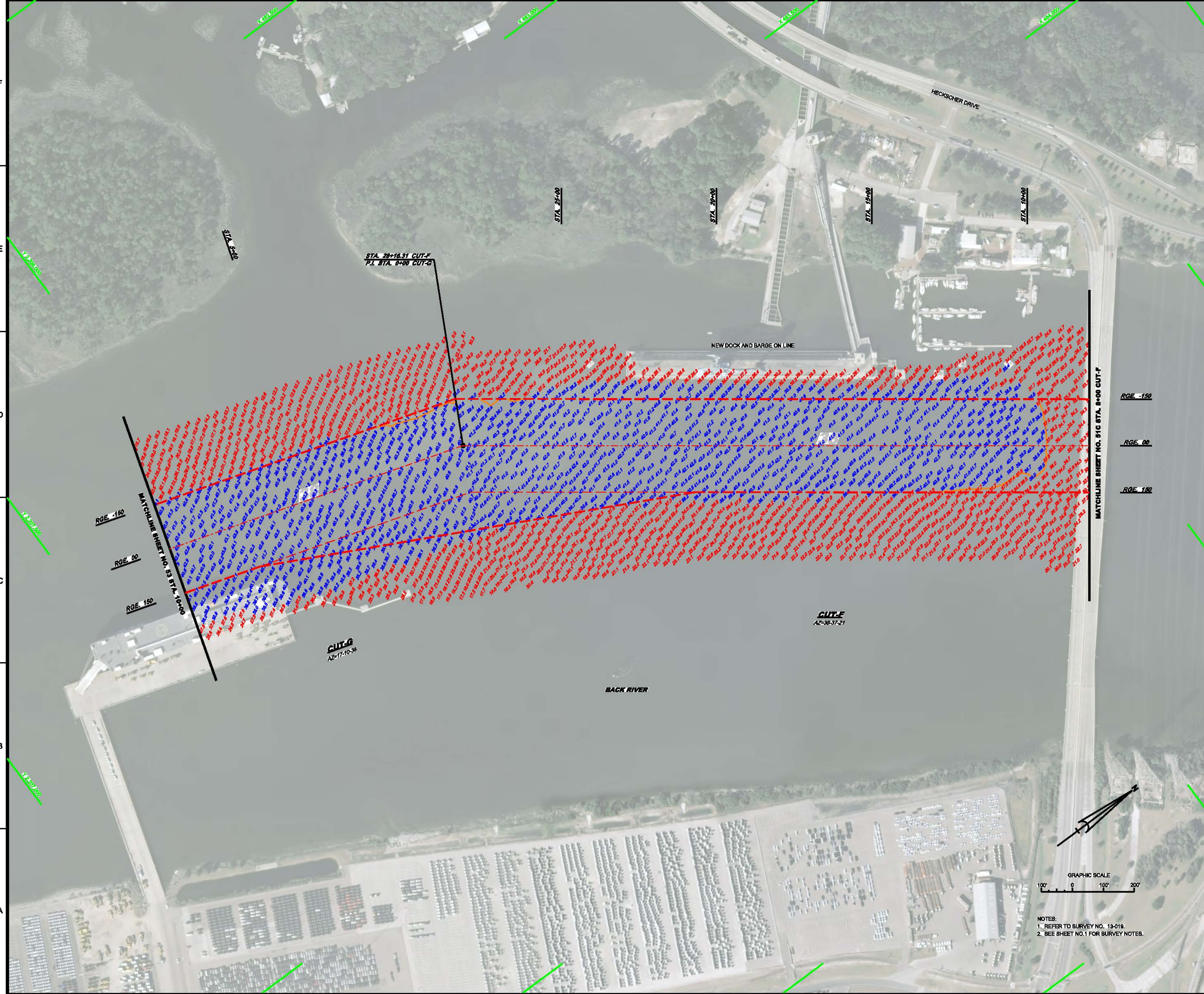
DATE	NO.	BY	REVISION

DEPARTMENT OF THE ARMY  
JACKSONVILLE DISTRICT, CORPS OF ENGINEERS  
JACKSONVILLE, FLORIDA

Checked by:	OR	
Drawn by:	WRM	
Date:	10/15/2013	Sheet:
Scale:	AS SHOWN	

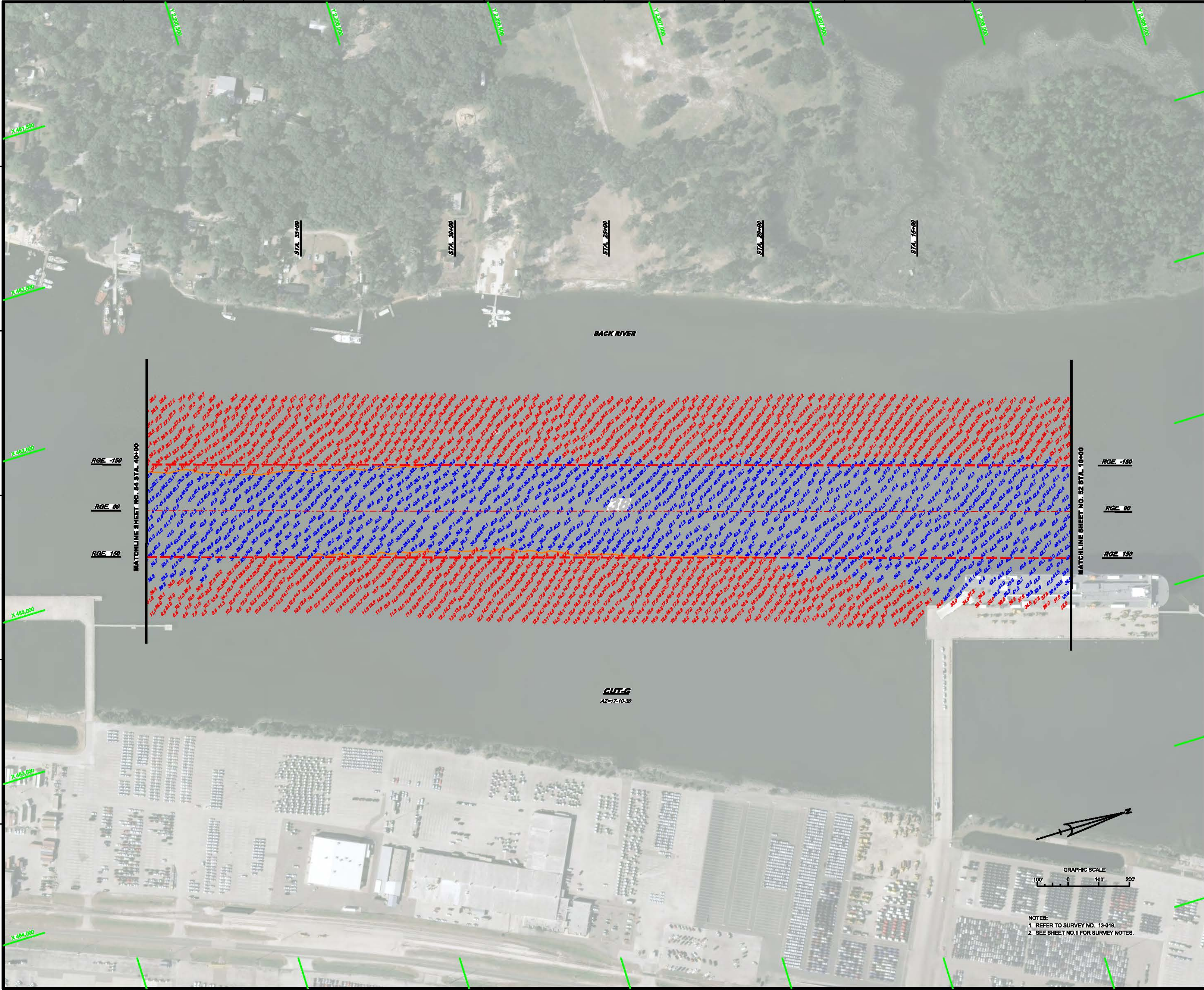
JACKSONVILLE HARBOR, FLORIDA  
1st QUARTER EXAMINATION SURVEY FY13  
30, 34, 38, 40, & 42 - FOOT PROJECT  
STA. 8+00 CUT - F THRU STA. 10+00 CUT - G  
PLAN

Drawing no.  
**55/57**



10 9 8 7 6 5 4 3 2 1

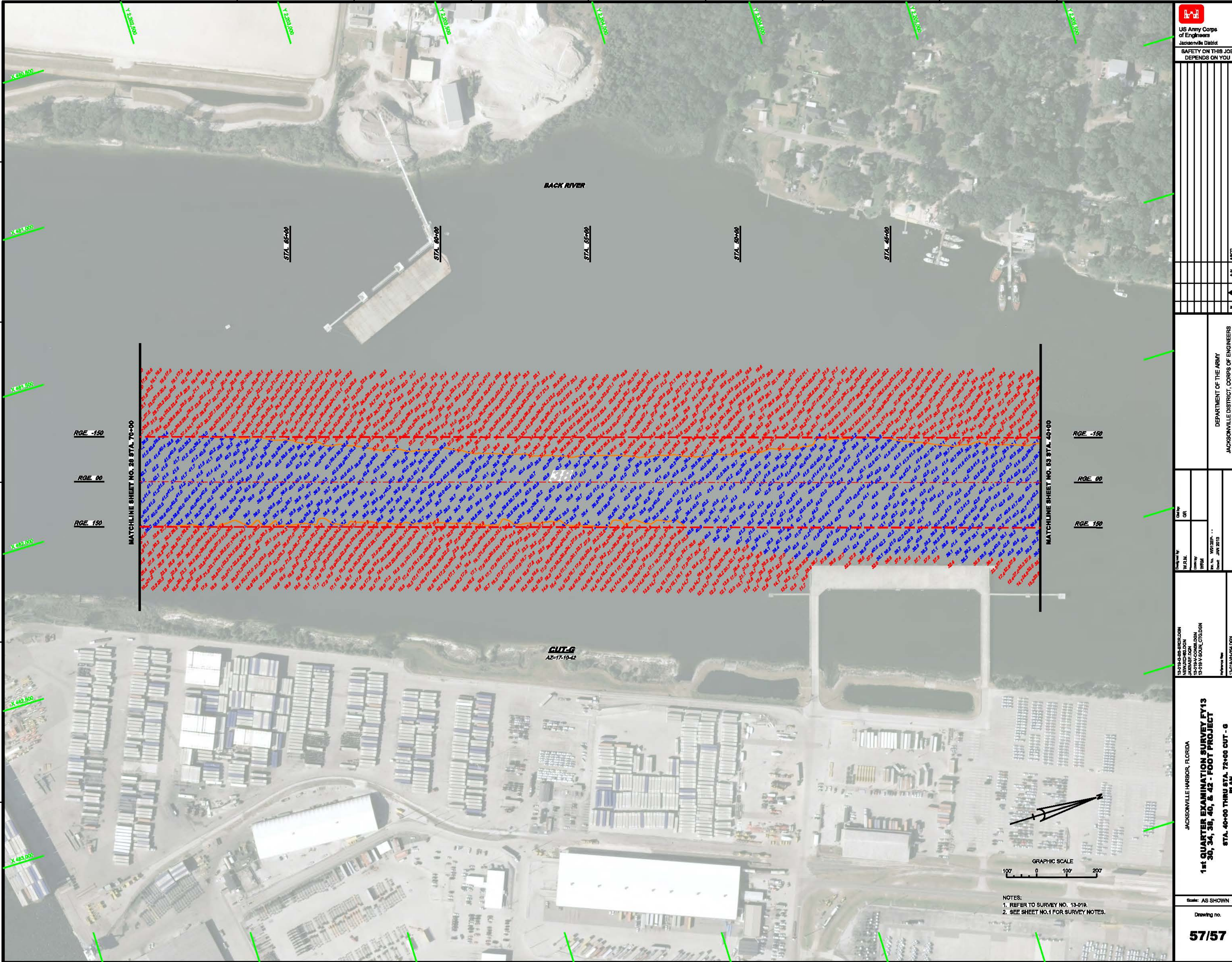




 US Army Corps of Engineers Jacksonville District <b>SAFETY ON THIS JOB DEPENDS ON YOU</b>																					
<table border="1" style="width: 100%; border-collapse: collapse;"> <tr> <td style="width: 20%; text-align: center;">No.</td> <td style="width: 20%; text-align: center;">Date</td> <td style="width: 20%; text-align: center;">By</td> <td style="width: 40%; text-align: center;">Description</td> </tr> <tr> <td style="text-align: center;">1</td> <td></td> <td style="text-align: center;">N</td> <td></td> </tr> <tr> <td style="text-align: center;">2</td> <td></td> <td style="text-align: center;">A-N</td> <td></td> </tr> <tr> <td style="text-align: center;">3</td> <td></td> <td style="text-align: center;">A-B-C-D</td> <td></td> </tr> </table>	No.	Date	By	Description	1		N		2		A-N		3		A-B-C-D		<table border="1" style="width: 100%; border-collapse: collapse;"> <tr> <td colspan="2" style="text-align: center;">                 DEPARTMENT OF THE ARMY                  JACKSONVILLE DISTRICT, CORPS OF ENGINEERS                  JACKSONVILLE, FLORIDA             </td> </tr> <tr> <td style="width: 50%; vertical-align: top;">                 Checked by:                  W.R.M.                  WRM             </td> <td style="width: 50%; vertical-align: top;">                 Date:                  10/22/2013                  Date:                  JAN 2013             </td> </tr> </table>	DEPARTMENT OF THE ARMY JACKSONVILLE DISTRICT, CORPS OF ENGINEERS JACKSONVILLE, FLORIDA		Checked by: W.R.M. WRM	Date: 10/22/2013 Date: JAN 2013
No.	Date	By	Description																		
1		N																			
2		A-N																			
3		A-B-C-D																			
DEPARTMENT OF THE ARMY JACKSONVILLE DISTRICT, CORPS OF ENGINEERS JACKSONVILLE, FLORIDA																					
Checked by: W.R.M. WRM	Date: 10/22/2013 Date: JAN 2013																				
JACKSONVILLE HARBOR, FLORIDA <b>1st QUARTER EXAMINATION SURVEY FY13</b> <b>30, 34, 38, 40, &amp; 42 - FOOT PROJECT</b> STA. 10+00 THRU STA. 40+00 CUT - G PLAN																					
Scale: AS SHOWN Drawing no. <b>56/57</b>																					

NOTES:  
 1. REFER TO SURVEY NO. 13-019.  
 2. SEE SHEET NO. 1 FOR SURVEY NOTES.





US Army Corps  
of Engineers  
Jacksonville District  
SAFETY ON THIS JOB  
DEPENDS ON YOU

DEPARTMENT OF THE ARMY  
JACKSONVILLE DISTRICT, CORPS OF ENGINEERS  
JACKSONVILLE, FLORIDA

Drawn by	Checked by
W.R.J.	OR
WRM	
13-018-08-SUR/DLDN	
13-018-04-CORR/DGN	
13-018-14-SOUL/DLDN	
13-018-10-010/DLDN	
Drawn	Checked
11/12/2013	JAN 2013
Project No.	File name
13-018-08-SUR/DLDN	13-018-10-010-D

13-018-08-SUR/DLDN  
13-018-04-CORR/DGN  
13-018-14-SOUL/DLDN  
13-018-10-010/DLDN  
Drawn: 11/12/2013  
Checked: JAN 2013

JACKSONVILLE HARBOR, FLORIDA  
1st QUARTER EXAMINATION SURVEY FY13  
30, 34, 38, 40, & 42 - FOOT PROJECT  
PLAN  
STA. 40+00 THRU STA. 72+00 CUT - G

Scale: AS SHOWN  
Drawing no.  
**57/57**

NOTES:  
1. REFER TO SURVEY NO. 13-018.  
2. SEE SHEET NO. 1 FOR SURVEY NOTES.