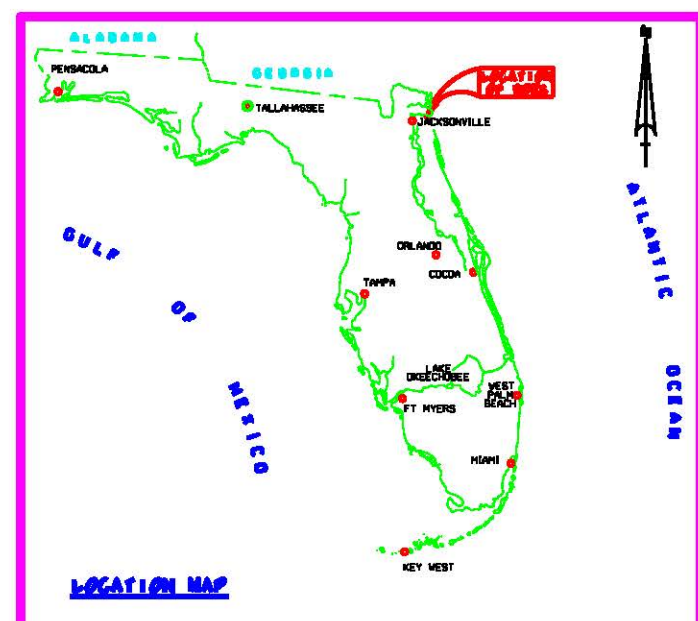
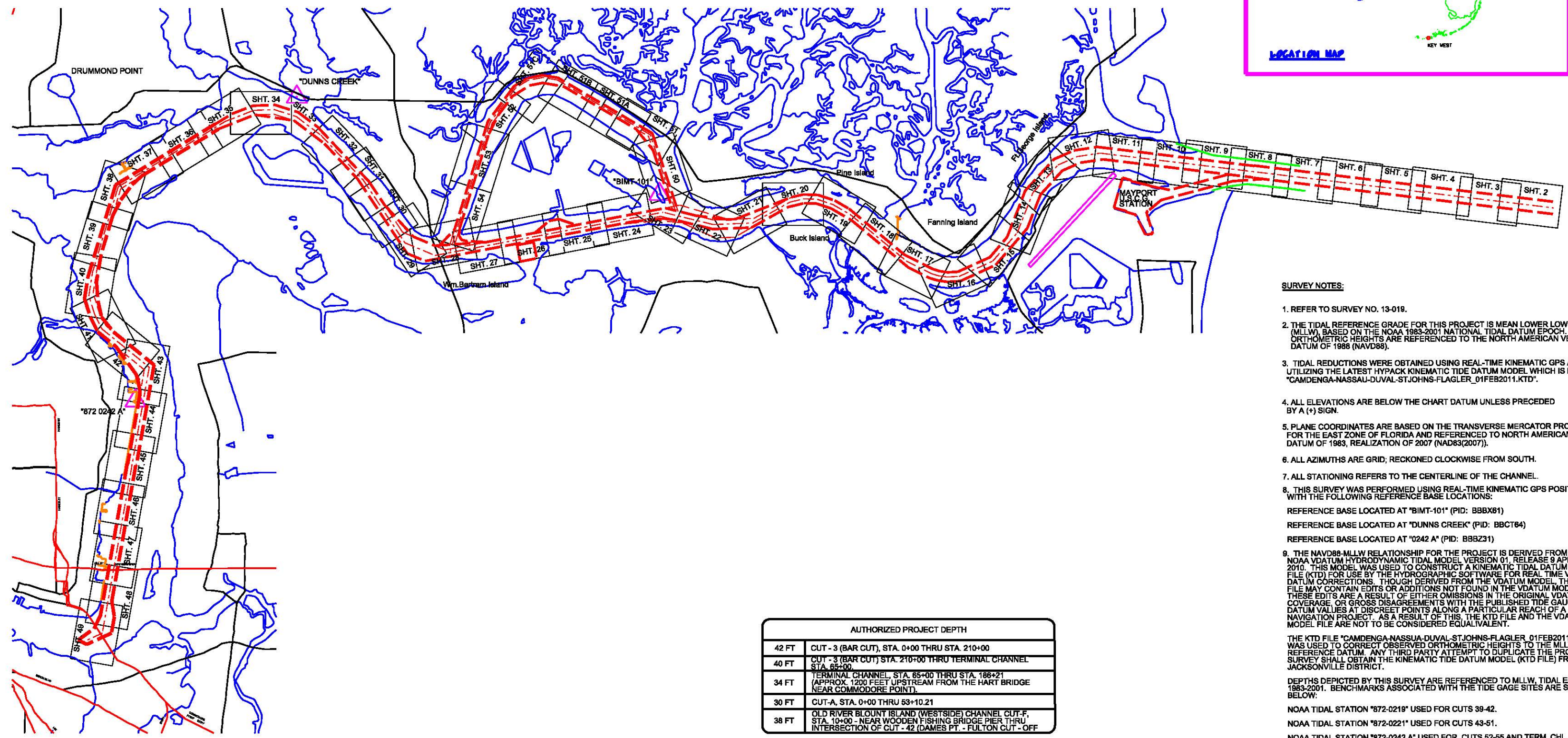


JACKSONVILLE HARBOR, FLORIDA

1st QUARTER EXAMINATION SURVEY FY13

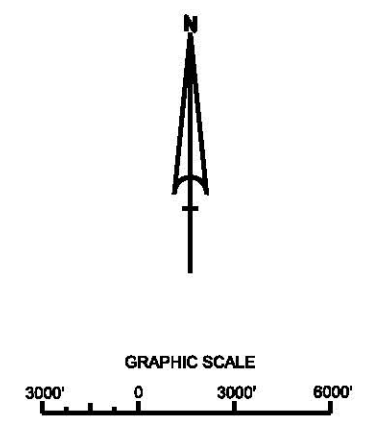


F
Y 2,230,000
E
Y 2,215,000
D
Y 2,200,000
C
Y 2,185,000
B
Y 2,170,000
A
Y 2,155,000



- SURVEY NOTES:**
- REFER TO SURVEY NO. 13-018.
 - THE TIDAL REFERENCE GRADE FOR THIS PROJECT IS MEAN LOWER LOW WATER (MLLW) BASED ON THE NOAA 1983-2001 NATIONAL TIDAL DATUM EPOCH. ORTHOMETRIC HEIGHTS ARE REFERENCED TO THE NORTH AMERICAN VERTICAL DATUM OF 1988 (NAVD88).
 - TIDAL REDUCTIONS WERE OBTAINED USING REAL-TIME KINEMATIC GPS AND UTILIZING THE LATEST HYPACK KINEMATIC TIDE DATUM MODEL WHICH IS NAMED "CAMDENGGA-NASSAU-DUVAL-STJOHNS-FLAGLER_01FEB2011.KTD".
 - ALL ELEVATIONS ARE BELOW THE CHART DATUM UNLESS PRECEDED BY A (+) SIGN.
 - PLANE COORDINATES ARE BASED ON THE TRANSVERSE MERCATOR PROJECTION FOR THE EAST ZONE OF FLORIDA AND REFERENCED TO NORTH AMERICAN DATUM OF 1983, REALIZATION OF 2007 (NAD83(2007)).
 - ALL AZIMUTHS ARE GRID; RECKONED CLOCKWISE FROM SOUTH.
 - ALL STATIONING REFERS TO THE CENTERLINE OF THE CHANNEL.
 - THIS SURVEY WAS PERFORMED USING REAL-TIME KINEMATIC GPS POSITIONING WITH THE FOLLOWING REFERENCE BASE LOCATIONS:
 REFERENCE BASE LOCATED AT "BIMT-101" (PID: BBBX61)
 REFERENCE BASE LOCATED AT "DUNNS CREEK" (PID: BBCT84)
 REFERENCE BASE LOCATED AT "0242 A" (PID: BBBZ31)
 - THE NAVD88-MLLW RELATIONSHIP FOR THE PROJECT IS DERIVED FROM THE NOAA VDATUM HYDRODYNAMIC TIDAL MODEL VERSION 01, RELEASE 9 APRIL 2010. THIS MODEL WAS USED TO CONSTRUCT A KINEMATIC TIDAL DATUM GRID FILE (KTD) FOR USE BY THE HYDROGRAPHIC SOFTWARE FOR REAL-TIME VERTICAL DATUM CORRECTIONS. THOUGH DERIVED FROM THE VDATUM MODEL, THE KTD FILE MAY CONTAIN EDITS OR ADDITIONS NOT FOUND IN THE VDATUM MODEL. THESE EDITS ARE A RESULT OF EITHER OMISSIONS IN THE ORIGINAL VDATUM COVERAGE OR GROSS DISAGREEMENTS WITH THE PUBLISHED TIDE GAUGE DATUM VALUES AT DISCREET POINTS ALONG A PARTICULAR REACH OF A NAVIGATION PROJECT. AS A RESULT OF THIS, THE KTD FILE AND THE VDATUM MODEL FILE ARE NOT TO BE CONSIDERED EQUIVALENT.
 THE KTD FILE "CAMDENGGA-NASSAU-DUVAL-STJOHNS-FLAGLER_01FEB2011.KTD" WAS USED TO CORRECT OBSERVED ORTHOMETRIC HEIGHTS TO THE MLLW REFERENCE DATUM. ANY THIRD PARTY ATTEMPT TO DUPLICATE THE PROJECT SURVEY SHALL OBTAIN THE KINEMATIC TIDE DATUM MODEL (KTD FILE) FROM THE JACKSONVILLE DISTRICT.
 - DEPTHS DEPICTED BY THIS SURVEY ARE REFERENCED TO MLLW, TIDAL EPOCH 1983-2001. BENCHMARKS ASSOCIATED WITH THE TIDE GAGE SITES ARE SPECIFIED BELOW:
 NOAA TIDAL STATION "872-0219" USED FOR CUTS 39-42.
 NOAA TIDAL STATION "872-0221" USED FOR CUTS 43-51.
 NOAA TIDAL STATION "872-0242 A" USED FOR CUTS 52-55 AND TERM. CHL.
 VERTICAL MEASUREMENTS WERE MADE USING A RESON 7101 MULTI-BEAM TRANSDUCER OPERATING AT 240 KHZ. ALL DEPTHS REPORTED IN HIGH FREQUENCY.
 - VESSEL DATES OF SURVEY CUT
 - SB-36 13-15 DEC 2012 CUTS 52-55, TERM. CH.
 - SB-36 18 DEC 2012 TERM. CH.
 - SB-36 19 DEC 2012 CUTS 50-51
 - SB-36 20 DEC 2012 CUTS 43-45, 55
 - SB-36 22 DEC 2012 CUTS 39-41
 - SB-36 02 JAN 2013 CUT-42
 - SB-36 03 JAN 2013 CUTS 42, F, G
 - SB-36 04 JAN 2013 CUTS A, B
 - SB-36 05 JAN 2013 CUTS 48-49, A
 - SB-36 10 JAN 2013 CUTS 40-42
 - SB-36 11 JAN 2013 CUT-45
 - AIDS TO NAVIGATION WERE LOCATED FOR THIS SURVEY.
 - THE INFORMATION DEPICTED ON THIS MAP REPRESENTS THE RESULTS OF SURVEYS MADE ON THE DATES INDICATED ABOVE AND CAN ONLY BE CONSIDERED AS INDICATING THE GENERAL CONDITIONS AT THAT TIME. THIS CHART IS SOLELY FOR THE DISTRIBUTION OF AVAILABLE DEPTHS AT THE TIME OF THE SURVEY AND IS NOT TO BE USED FOR NAVIGATION.
 - SURVEY ACCURACY PERFORMANCE STANDARDS, QUALITY CONTROL, AND QUALITY ASSURANCE REQUIREMENTS WERE FOLLOWED DURING THIS SURVEY IN ACCORDANCE WITH USACE EM 1110-2-1003, HYDROGRAPHIC SURVEYING, 1 JAN 02.

AUTHORIZED PROJECT DEPTH	
42 FT	CUT - 3 (BAR CUT), STA. 0+00 THRU STA. 210+00
40 FT	CUT - 3 (BAR CUT) STA. 210+00 THRU TERMINAL CHANNEL STA. 602+00
34 FT	TERMINAL CHANNEL, STA. 85+00 THRU STA. 186+21 (APPROX. 1200 FEET UPSTREAM FROM THE HART BRIDGE NEAR COMMODORE POINT).
30 FT	CUT-A, STA. 0+00 THRU 53+10.21
38 FT	OLD RIVER BLOUNT ISLAND (WESTSIDE) CHANNEL CUT-F, STA. 10+00 - NEAR WOODEN FISHING BRIDGE PIER THRU INTERSECTION OF CUT - 42 (DAMES PT. - FULTON CUT - OFF

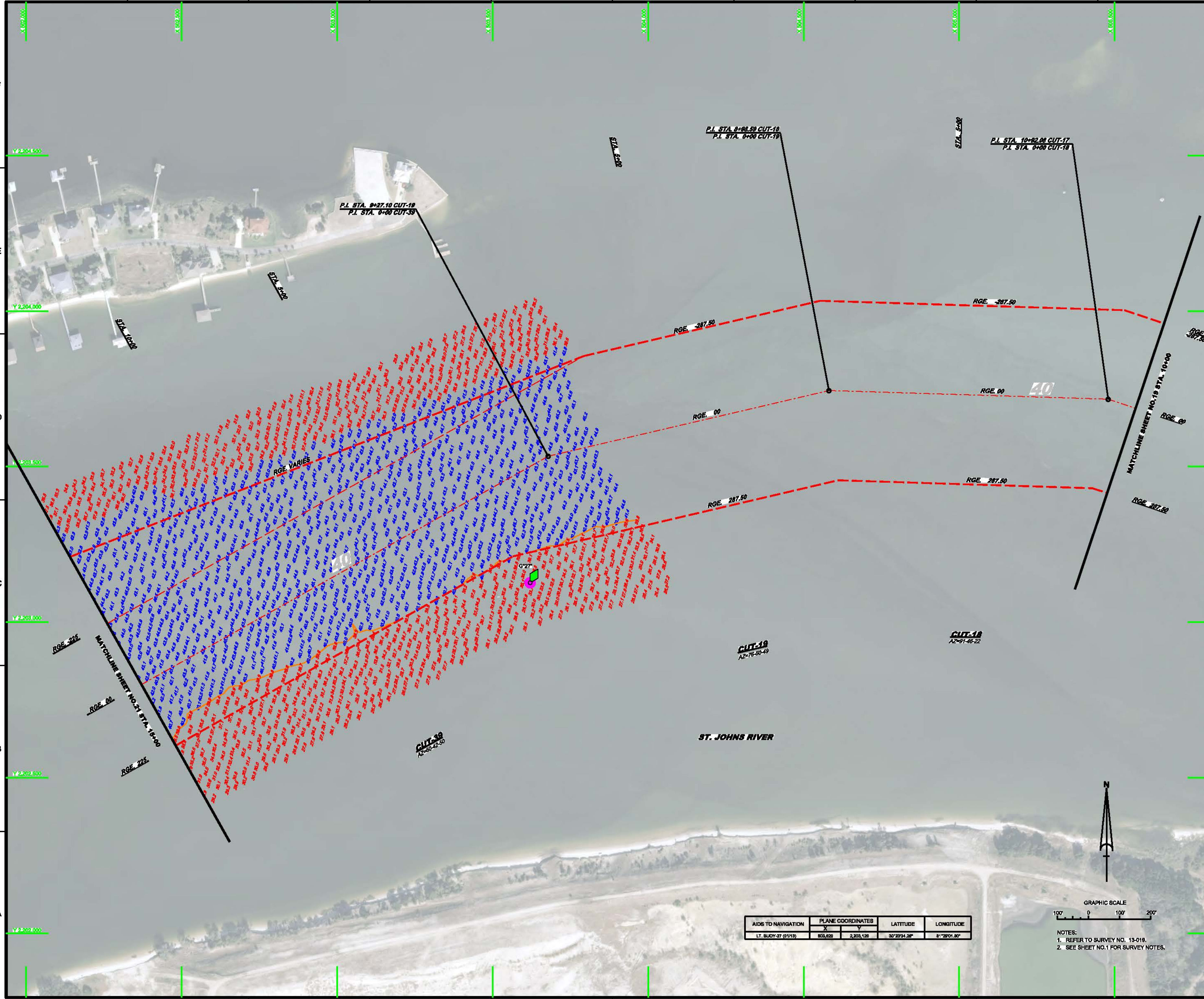


LEGEND	
(Symbol)	MONUMENT
(Symbol)	LIGHTED BEACON
(Symbol)	GREEN DAYBEACON
(Symbol)	RED DAYBEACON
(Symbol)	RED LIGHTED BUOY
(Symbol)	GREEN LIGHTED BUOY
(Symbol)	CAN BUOY
(Symbol)	NUN BUOY
(Symbol)	TIDE STAFF

ABBREVIATIONS	
NAVD	NORTH AMERICAN VERTICAL DATUM OF 1988
MLLW	MEAN LOWER LOW WATER
P.I.	POINT OF INTERSECTION
EL	ELEVATION NAVD (FEET)
DNR	FLORIDA DEPARTMENT OF NATURAL RESOURCES
STA	STATION
IWW	INTRACOASTAL WATERWAY
NGS	NATIONAL GEODETIC SURVEY

JACKSONVILLE HARBOR, FLORIDA
 1st QUARTER EXAMINATION SURVEY FY13
 30, 34, 38, 40, & 42 - FOOT PROJECT
 COVER, INDEX AND PLAN SHEET

DESIGNED BY		CHECKED BY		DATE	
W.A.J.	GR				
W.A.J.	GR				
W.A.J.	GR				



AIDS TO NAVIGATION	PLANE COORDINATES		LATITUDE	LONGITUDE
	X	Y		
LT. BUOY-27 (0118)	803,628	2,825,128	30°29'24.26"	81°28'01.80"

GRAPHIC SCALE
 100' 0 100' 200'

NOTES:
 1. REFER TO SURVEY NO. 13-018.
 2. SEE SHEET NO.1 FOR SURVEY NOTES.

US Army Corps of Engineers
 Jacksonville District
 SAFETY ON THIS JOB
 DEPENDS ON YOU

DATE: 2018

DEPARTMENT OF THE ARMY
 JACKSONVILLE DISTRICT, CORPS OF ENGINEERS
 JACKSONVILLE, FLORIDA

Drawn by: W.R.M.
 Checked by: WPM
 Date: 10/23/2018
 Date: JAN 2013

13-018-08-BIRDSON
 13-018-08-CONRADSON
 13-018-08-COOPERSON
 13-018-08-DAVISON

Reference No: 13-018-08-BIRDSON

JACKSONVILLE HARBOR, FLORIDA

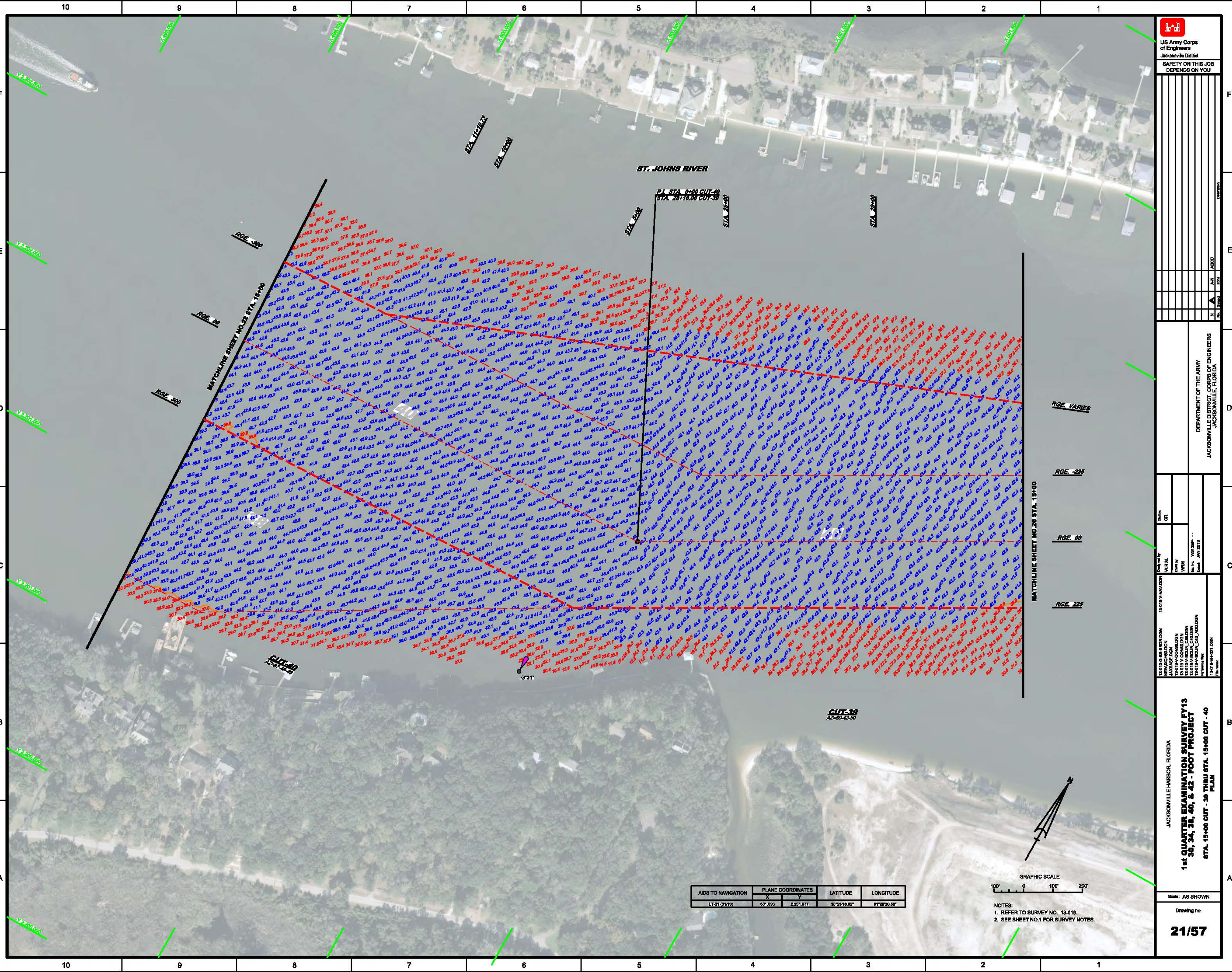
1st QUARTER EXAMINATION SURVEY FY13
30, 34, 38, 40, & 42 - FOOT PROJECT

STA. 10+00 CUT - 17 THRU STA. 15+00 CUT - 39
 PLAN

Scale: AS SHOWN

Drawing no.

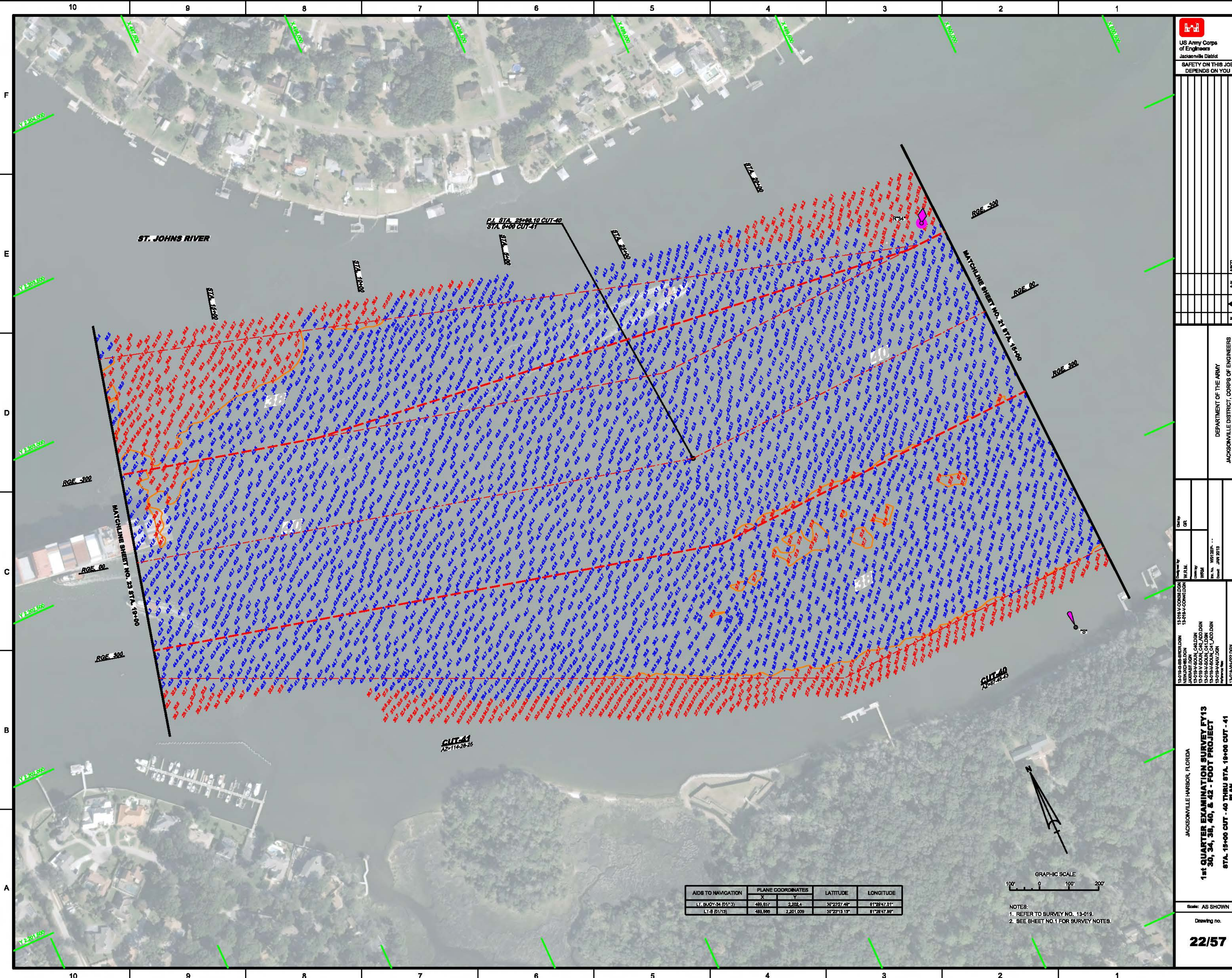
20/57



AIDS TO NAVIGATION	PLANE COORDINATES		LATITUDE	LONGITUDE
	X	Y		
LT-31 (2113)	631,983	2,261,877	37°29'18.82"	81°29'30.88"

GRAPHIC SCALE
 100' 0 100' 200'

NOTES:
 1. REFER TO SURVEY NO. 13-018.
 2. SEE SHEET NO. 1 FOR SURVEY NOTES.



F
E
D
C
B
A

10 9 8 7 6 5 4 3 2 1

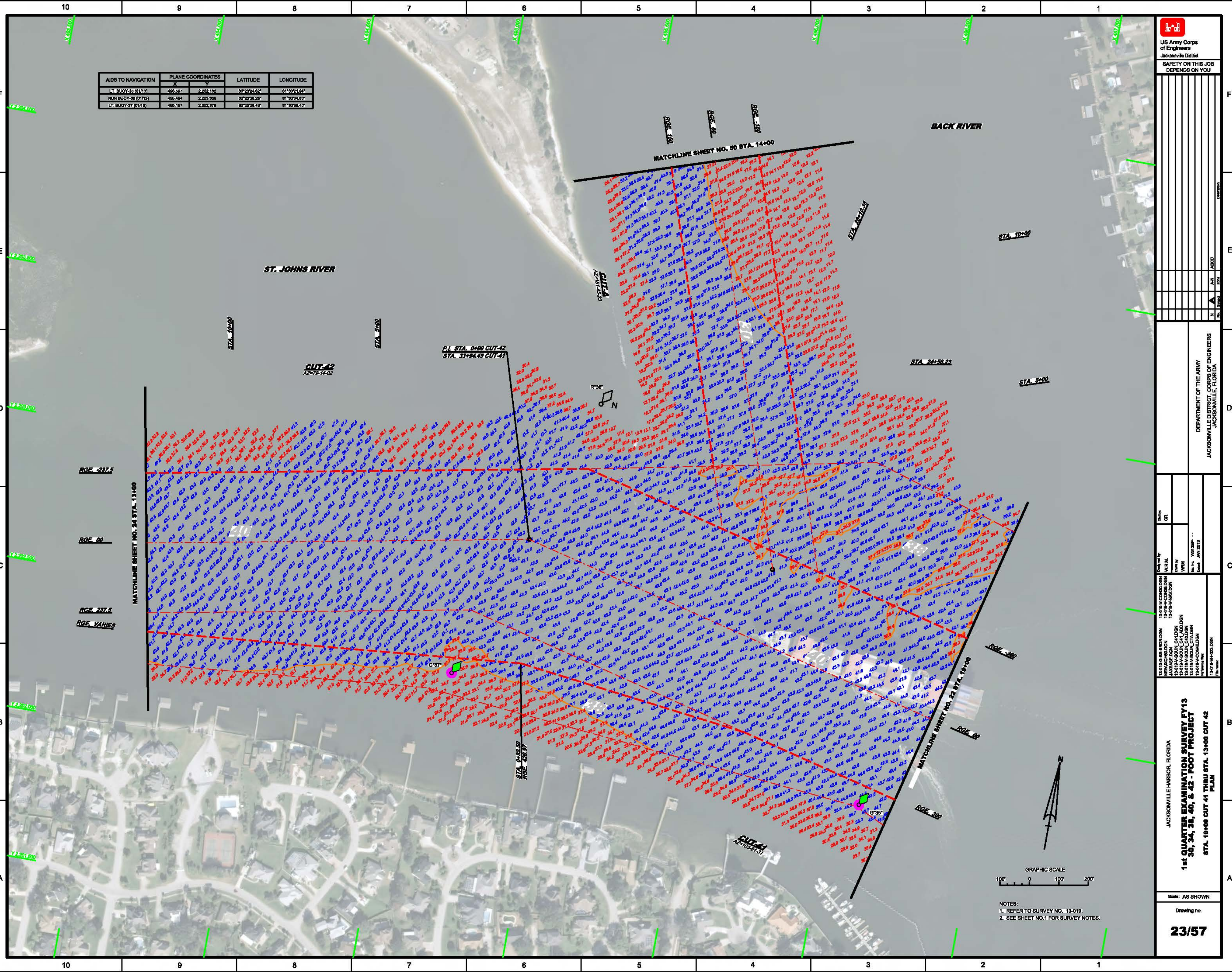
 US Army Corps of Engineers Jacksonville District SAFETY ON THIS JOB DEPENDS ON YOU	
Check by: W.R.M. Date: JAN 2013	OR: WRM Date: JAN 2013
13-019-V-CONSOLID.DWG 13-019-V-CONSOLID.DWG 13-019-V-008-BIBLD.DWG 13-019-V-008-BIBLD.DWG 13-019-V-009-CALD.DWG 13-019-V-009-CALD.DWG 13-019-V-010-CALD.DWG 13-019-V-010-CALD.DWG 13-019-V-011-AV.DWG 13-019-V-011-AV.DWG 13-019-V-012-DEN.DWG 13-019-V-012-DEN.DWG	
JACKSONVILLE HARBOR, FLORIDA 1st QUARTER EXAMINATION SURVEY FY13 30, 34, 38, 40, & 42 - FOOT PROJECT STA. 15+00 CUT - 40 THRU STA. 18+00 CUT - 41 PLAN	
Scale: AS SHOWN	
Drawing no. 22/57	

AIDS TO NAVIGATION	PLANE COORDINATES		LATITUDE	LONGITUDE
	X	Y		
LT. BUOY-34 (1713)	488,857	2,202.4	30°23'27.48"	81°28'47.51"
LT-5 (1715)	488,986	2,201,009	30°23'13.13"	81°28'47.89"

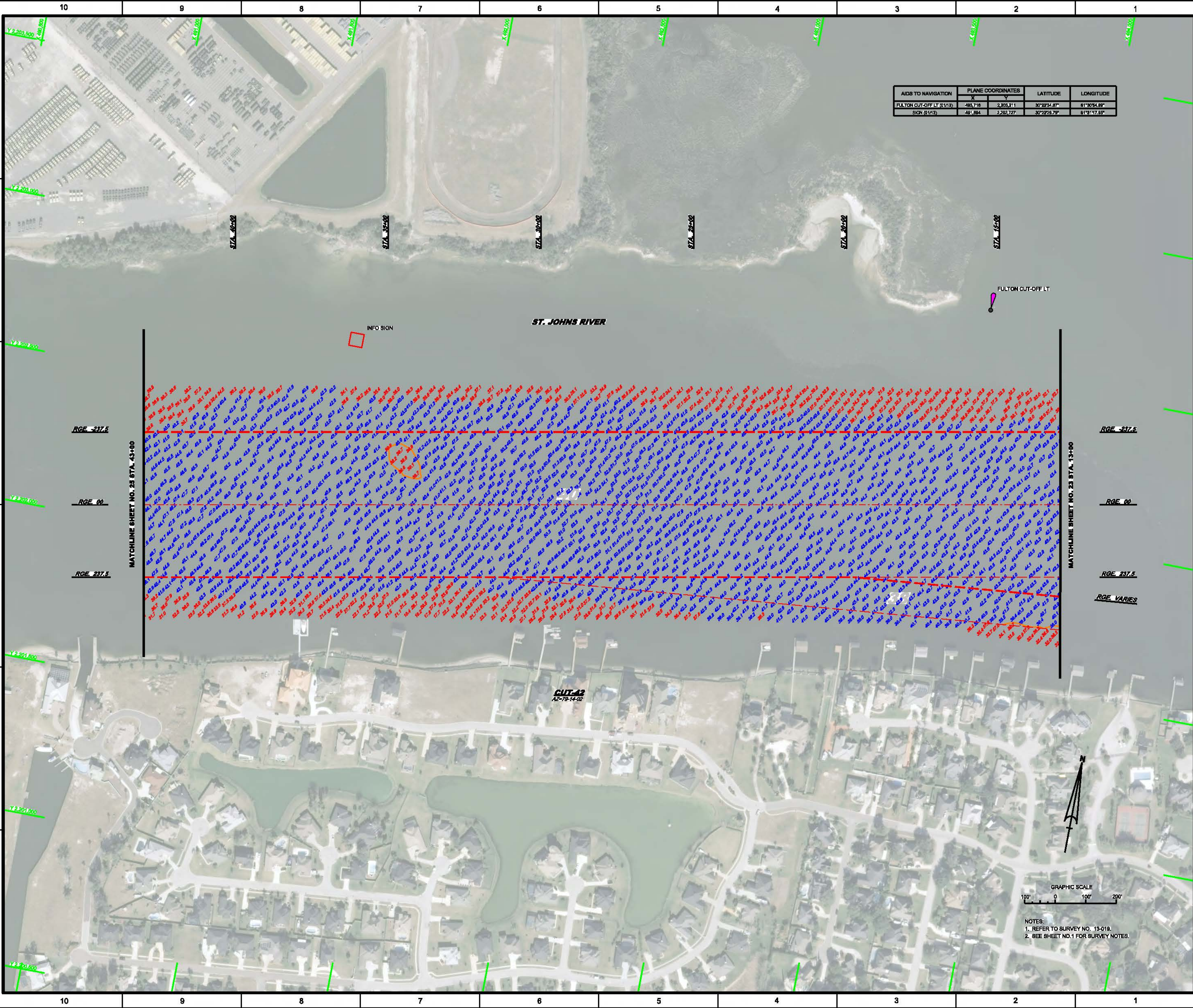
GRAPHIC SCALE
 100' 0 100' 200'

NOTES:
 1. REFER TO SURVEY NO. 13-019.
 2. SEE SHEET NO.1 FOR SURVEY NOTES.


AIDS TO NAVIGATION	PLANE COORDINATES		LATITUDE	LONGITUDE
	X	Y		
LT. BUOY-38 (01/13)	486,997	2,202,186	30°23'4.82"	81°30'21.94"
NLN BUOY-38 (01/13)	486,494	2,203,366	30°23'34.26"	81°30'24.67"
LT. BUOY-37 (01/13)	486,167	2,202,378	30°23'28.46"	81°30'28.10"



NOTES:
1. REFER TO SURVEY NO. 13-019.
2. SEE SHEET NO.1 FOR SURVEY NOTES.



AIDS TO NAVIGATION	PLANE COORDINATES		LATITUDE	LONGITUDE
	X	Y		
FULTON CUT-OFF LT (B113)	483,718	2,203,211	30°23'4.87"	81°30'54.89"
8IGN (B113)	481,894	2,202,727	30°22'29.79"	81°31'47.85"

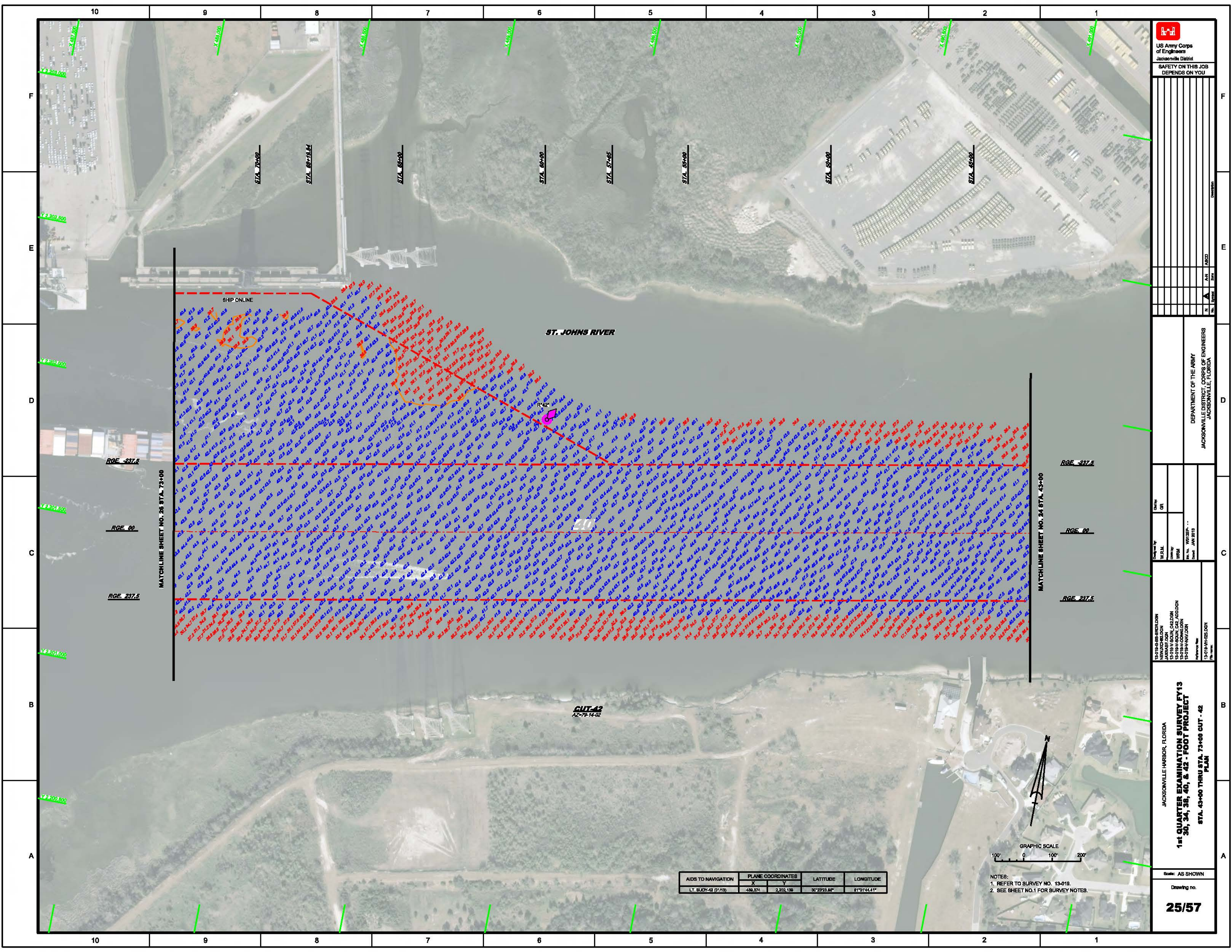


US Army Corps of Engineers
Jacksonville District
SAFETY ON THIS JOB
DEPENDS ON YOU

DEPARTMENT OF THE ARMY JACKSONVILLE DISTRICT, CORPS OF ENGINEERS JACKSONVILLE, FLORIDA	Drawing No. 24/57	Scale: AS SHOWN	Project Name 1st QUARTER EXAMINATION SURVEY FY13 30, 34, 38, 40, & 42 - FOOT PROJECT PLAN	Reference No. 13-018-08-SIBOLDON 13-018-08-001 13-018-08-002 13-018-08-003 13-018-08-004 13-018-08-005 13-018-08-006 13-018-08-007 13-018-08-008 13-018-08-009 13-018-08-010 13-018-08-011 13-018-08-012 13-018-08-013 13-018-08-014 13-018-08-015 13-018-08-016 13-018-08-017 13-018-08-018 13-018-08-019 13-018-08-020 13-018-08-021 13-018-08-022 13-018-08-023 13-018-08-024 13-018-08-025 13-018-08-026 13-018-08-027 13-018-08-028 13-018-08-029 13-018-08-030 13-018-08-031 13-018-08-032 13-018-08-033 13-018-08-034 13-018-08-035 13-018-08-036 13-018-08-037 13-018-08-038 13-018-08-039 13-018-08-040 13-018-08-041 13-018-08-042 13-018-08-043 13-018-08-044 13-018-08-045 13-018-08-046 13-018-08-047 13-018-08-048 13-018-08-049 13-018-08-050 13-018-08-051 13-018-08-052 13-018-08-053 13-018-08-054 13-018-08-055 13-018-08-056 13-018-08-057 13-018-08-058 13-018-08-059 13-018-08-060 13-018-08-061 13-018-08-062 13-018-08-063 13-018-08-064 13-018-08-065 13-018-08-066 13-018-08-067 13-018-08-068 13-018-08-069 13-018-08-070 13-018-08-071 13-018-08-072 13-018-08-073 13-018-08-074 13-018-08-075 13-018-08-076 13-018-08-077 13-018-08-078 13-018-08-079 13-018-08-080 13-018-08-081 13-018-08-082 13-018-08-083 13-018-08-084 13-018-08-085 13-018-08-086 13-018-08-087 13-018-08-088 13-018-08-089 13-018-08-090 13-018-08-091 13-018-08-092 13-018-08-093 13-018-08-094 13-018-08-095 13-018-08-096 13-018-08-097 13-018-08-098 13-018-08-099 13-018-08-100	Drawing Title STA. 13+00 THRU STA. 43+00 CUT - 42 PLAN

GRAPHIC SCALE
100' 0 100' 200'

NOTES:
1. REFER TO SURVEY NO. 19-019.
2. SEE SHEET NO.1 FOR SURVEY NOTES.



NO.	DATE	BY	DESCRIPTION

DEPARTMENT OF THE ARMY
 JACKSONVILLE DISTRICT, CORPS OF ENGINEERS
 JACKSONVILLE, FLORIDA

Drawn by: W.R.M.
 Checked by: WRM
 Date: JAN 2013

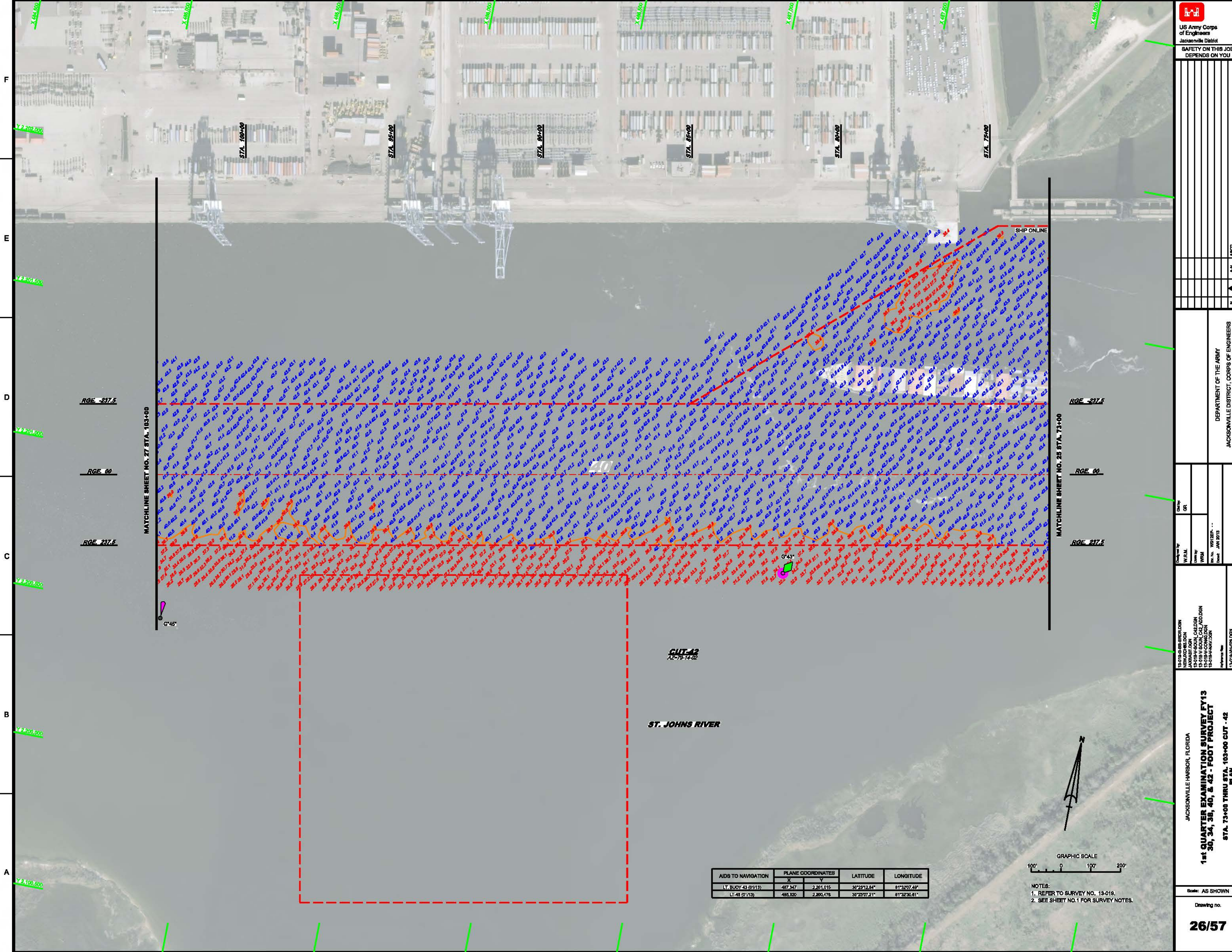
13-018-08-BIRDSON
 13-018-08-04220N
 13-018-08-04220N
 13-018-08-04220N

JACKSONVILLE HARBOR, FLORIDA
 1st QUARTER EXAMINATION SURVEY FY13
 STA. 30, 34, 38, 40, & 42 - FOOT PROJECT
 PLAN
 STA. 43+00 THRU STA. 73+00 CUT - 42

Scale: AS SHOWN
 Drawing no.
25/57

AIDS TO NAVIGATION	PLANE COORDINATES		LATITUDE	LONGITUDE
	X	Y		
LT. BUOY-43 (2113)	489,374	2,302,138	30°29'23.86"	81°51'44.41"

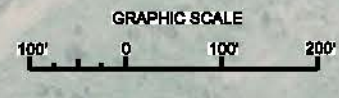
NOTES:
 1. REFER TO SURVEY NO. 13-018.
 2. SEE SHEET NO.1 FOR SURVEY NOTES.



MATCHLINE SHEET NO. 27 STA. 103+00
RGE -237.5
RGE 00
RGE 237.5

MATCHLINE SHEET NO. 28 STA. 75+00
RGE -237.5
RGE 00
RGE 237.5

AIDS TO NAVIGATION	PLANE COORDINATES		LATITUDE	LONGITUDE
	X	Y		
LT. BUOY 43 (R/I/S)	487,347	2,261,615	30°23'24.84"	81°32'07.46"
LT-48 (R/I/S)	486,920	2,260,476	30°23'07.21"	81°32'30.61"



NOTES:
1. REFER TO SURVEY NO. 13-019.
2. SEE SHEET NO. 1 FOR SURVEY NOTES.

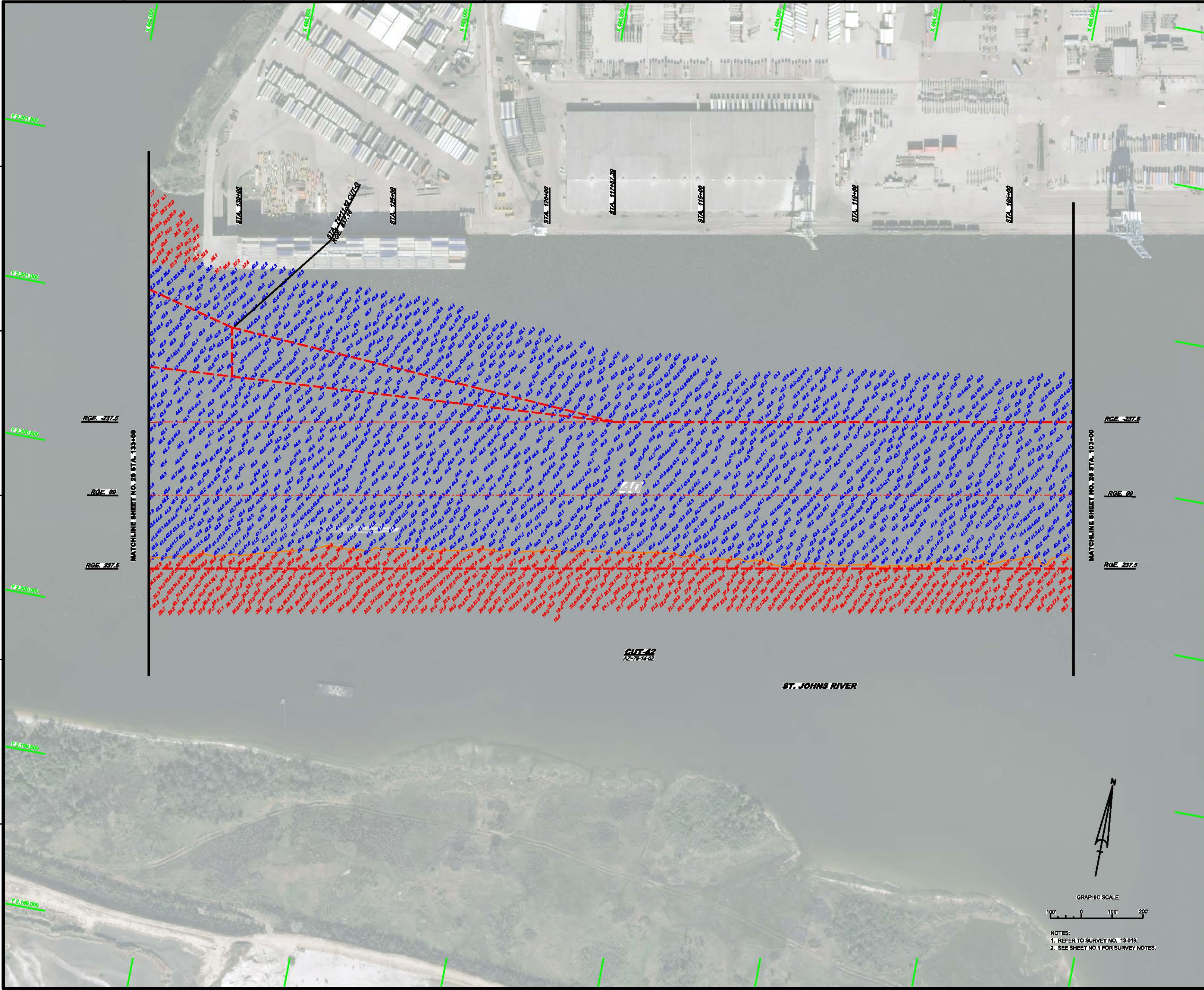
US Army Corps of Engineers
Jacksonville District
SAFETY ON THIS JOB
DEPENDS ON YOU


DEPARTMENT OF THE ARMY
JACKSONVILLE DISTRICT, CORPS OF ENGINEERS
JACKSONVILLE, FLORIDA

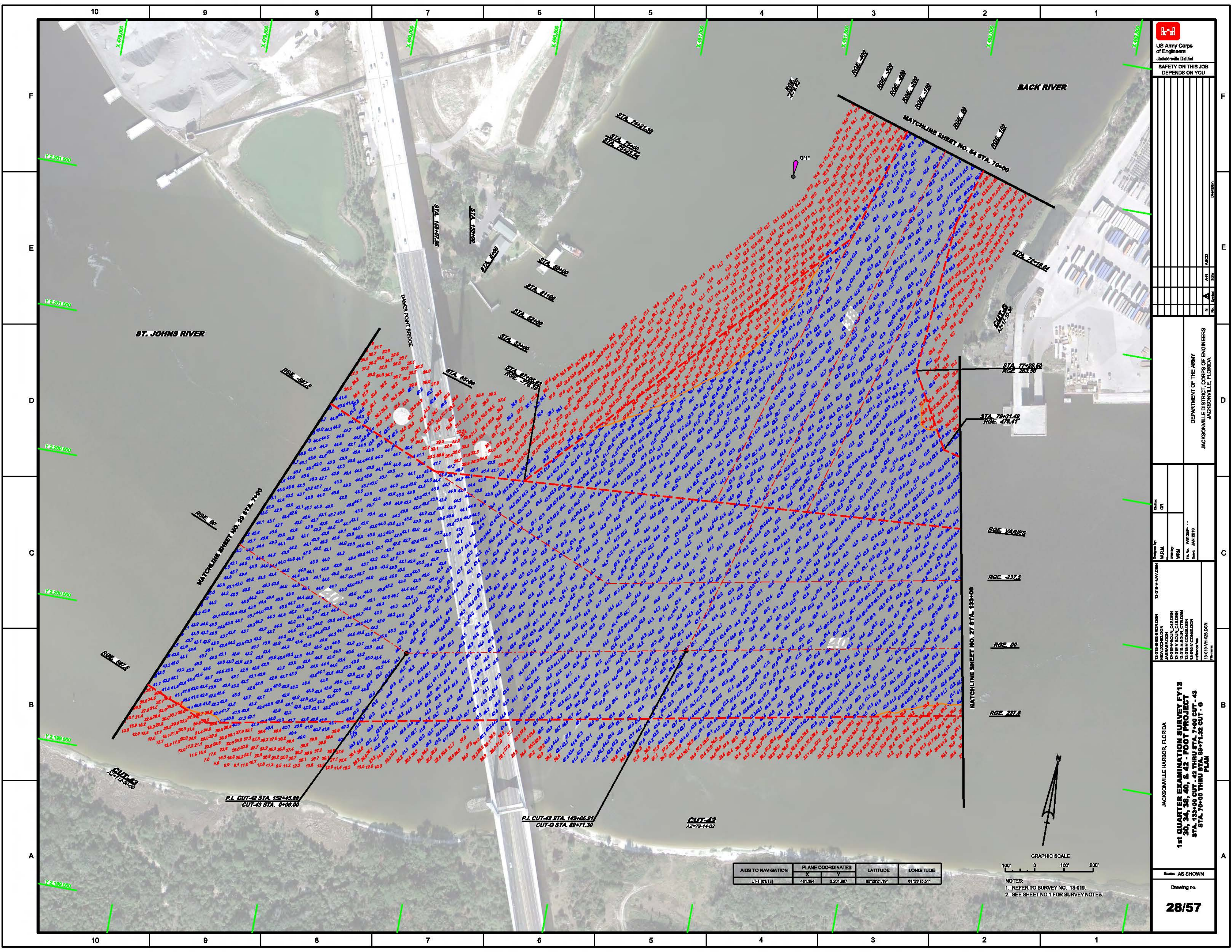
13-019-08-SUB/DIG/DON
NEWSCHEIDEN
13-019-08-0001_C42 ADD/DON
13-019-08-0001_C42 ADD/DON
13-019-08-0001_C42 ADD/DON
Date: JAN 2013
Prepared by: [Name]
Checked by: [Name]

JACKSONVILLE HARBOR, FLORIDA
1st QUARTER EXAMINATION SURVEY FY13
30, 34, 38, 40, & 42 - FOOT PROJECT
PLAN
STA. 73+00 THRU STA. 103+00 CUT - 42

Scale: AS SHOWN
Drawing no.
26/57



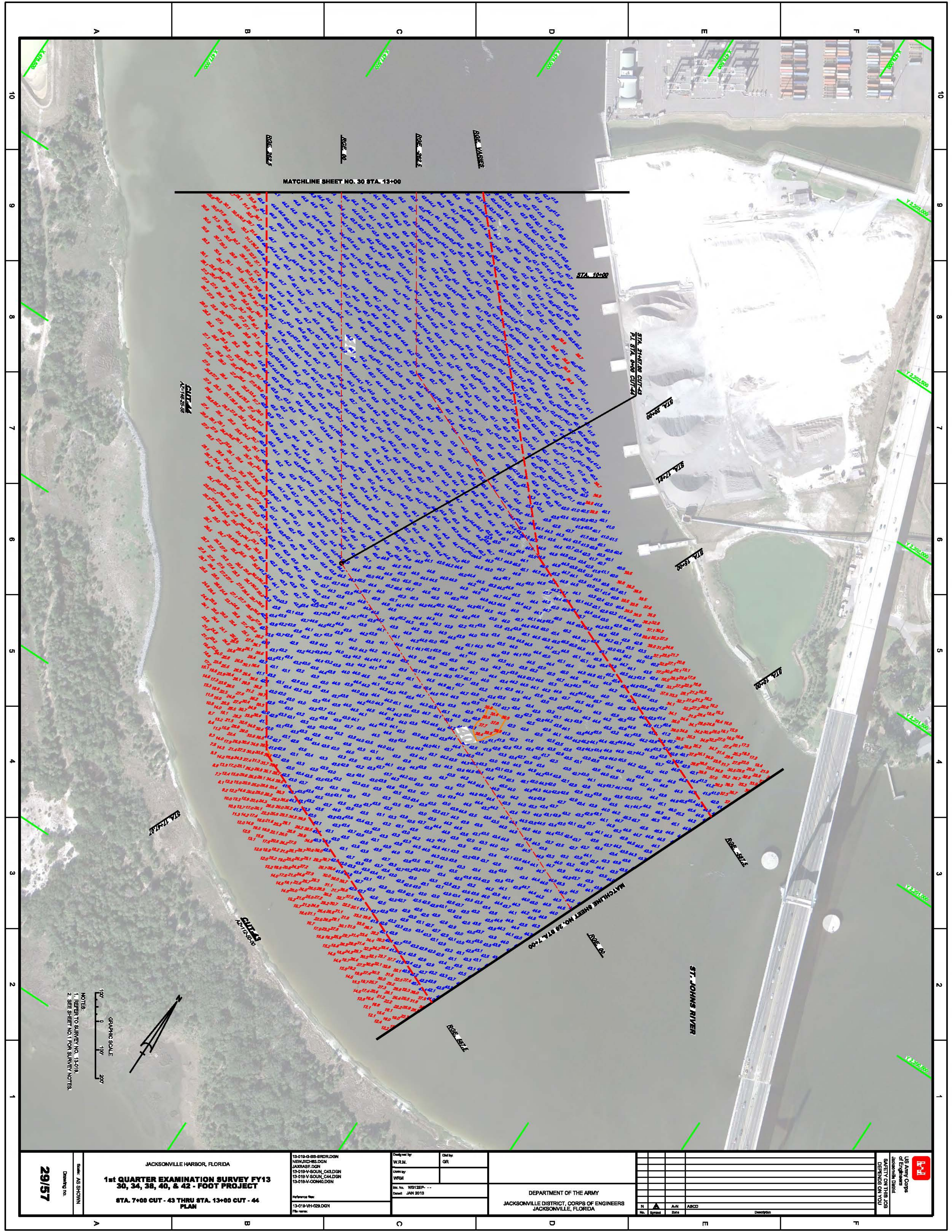
 US Army Corps of Engineers Jacksonville District SAFETY ON THIS JOB DEPENDS ON YOU	
DEPARTMENT OF THE ARMY JACKSONVILLE DISTRICT, CORPS OF ENGINEERS JACKSONVILLE, FLORIDA	
Drawing no. 27/57	Drawing Title 1st QUARTER EXAMINATION SURVEY FY13 30, 34, 38, 40, & 42 - FOOT PROJECT STA. 103+00 THRU STA. 133+00 CUT - 42 PLAN
Scale: AS SHOWN	
NOTES: 1. REFER TO SURVEY NO. 13-018. 2. SEE SHEET NO.1 FOR SURVEY NOTES.	
GRAPHIC SCALE 100' 0 100' 200'	



AIDS TO NAVIGATION	PLANE COORDINATES	LATITUDE	LONGITUDE	
X	Y			
LT-1 (01/13)	481,284	2,201,987	30°22'21.19"	81°25'15.61"



NOTES:
 1. REFER TO SURVEY NO. 13-018.
 2. SEE SHEET NO.1 FOR SURVEY NOTES.



NOTES:
 1. REFER TO SURVEY NO. 13-018
 2. SEE SHEET NO. 1 FOR SURVEY NOTES

GRAPHIC SCALE
 0 100 200
 1" = 100'

29/57 Drawing no.	JACKSONVILLE HARBOR, FLORIDA 1st QUARTER EXAMINATION SURVEY FY13 30, 34, 38, 40, & 42 - FOOT PROJECT STA. 7+00 CUT - 43 THRU STA. 13+00 CUT - 44 PLAN	13-018-01-BB-BRD.DGN NEW.PCH8.DGN JARBASE.DGN 13-018-V-SOUN_C43.DGN 13-018-V-COHD.DGN	Designed by: W.R.M. Drawn by: WRM Rev. No. 0012EP-- Date: JAN 2013	Check by: QR	DEPARTMENT OF THE ARMY JACKSONVILLE DISTRICT, CORPS OF ENGINEERS JACKSONVILLE, FLORIDA	<table border="1"> <tr> <th>No.</th> <th>Symbol</th> <th>Area</th> <th>ABCD</th> <th>Description</th> </tr> <tr> <td> </td> <td> </td> <td> </td> <td> </td> <td> </td> </tr> <tr> <td> </td> <td> </td> <td> </td> <td> </td> <td> </td> </tr> <tr> <td> </td> <td> </td> <td> </td> <td> </td> <td> </td> </tr> </table>	No.	Symbol	Area	ABCD	Description															
	No.	Symbol	Area	ABCD	Description																					
Reference File: 13-018-VH-029.DGN File name:		US Army Corps of Engineers Jacksonville District SAFETY ON THIS JOB DEPENDS ON YOU																								
29/57																										