

PORT EVERGLADES HARBOR BROWARD COUNTY, FLORIDA EXAMINATION SURVEY FY13

SURVEY NOTES

- REFER TO SURVEY NO. 13-016.
- SOUNDINGS ARE IN FEET AND TENTHS AND REFER TO MEAN LOWER LOW WATER (MLLW) TIDAL DATUM.
- TIDAL REDUCTIONS WERE OBTAINED UTILIZING A REAL-TIME KINEMATIC (RTK) GPS AND REFERENCED TO MLLW UTILIZING A HYPACK KINEMATIC TIDE DATUM (KTD) MODEL. KTD FILE NAME IS: "PALMBEACH-BROWARD-02JULY2010.KTD".
- ALL ELEVATIONS ARE BELOW THE CHART DATUM UNLESS PRECEDED BY A (+) SIGN.
- PLANE COORDINATES ARE BASED ON THE TRANSVERSE MERCATOR PROJECTION FOR THE EAST ZONE OF FLORIDA AND REFERENCED TO NORTH AMERICAN DATUM OF 1983 (NAD83).
- ALL AZIMUTHS ARE GRID, RECKONED CLOCKWISE FROM SOUTH.
- ALL STATIONING REFERS TO THE CENTERLINE OF THE CHANNEL.
- THIS SURVEY WAS PERFORMED USING REAL-TIME KINEMATIC GPS POSITIONING WITH THE FOLLOWING REFERENCE BASE LOCATION:
 *REFERENCE BASE LOCATED AT "USN NORTH RANGE 2 NO. 5" (PID: BBCB27)
 *TIDE STAFF SET INSIDE OF PORT EVERGLADES FROM "872 2951 TIDAL 4" (PID: AD2443)
 DEPTHS DEPICTED BY THIS SURVEY ARE REFERENCED TO MLLW, TIDAL EPOCH 1983-2001 AS REPORTED BY THE NATIONAL OCEANIC AND ATMOSPHERIC ADMINISTRATION (NOAA). NOAA'S DATUM MODEL WAS USED AND CALIBRATED TO THE PUBLISHED MLLW HEIGHTS OF THE BENCHMARKS ASSOCIATED WITH THE TIDE GAGE SITE SPECIFIED BELOW:
 NOAA TIDAL STATION 872-2951, PORT EVERGLADES, LAKE MABEL, FL
 VERTICAL MEASUREMENTS WERE MADE USING A R2SONIC 2024 MULTI-BEAM SYSTEM OPERATING AT 230 KHZ. ALL SOUNDINGS SHOWN ARE IN HIGH FREQUENCY.
 VESSEL DATE OF SURVEY CUT
 S/V FLORIDA 14-15 DEC 2012 DANIA CUTS, SOUTHPORT CUTS 1-3
 S/V FLORIDA 17-18 DEC 2012 NORTH, MIDDLE, & SOUTH TURNING BASINS, ENTRANCE CHANNEL
- AIDS TO NAVIGATION WERE LOCATED DURING THIS SURVEY.
- THE INFORMATION DEPICTED ON THIS MAP REPRESENTS THE RESULTS OF OF SURVEYS MADE ON THE DATES INDICATED ABOVE AND CAN ONLY BE CONSIDERED AS INDICATING THE GENERAL CONDITIONS AT THAT TIME. THIS CHART IS SOLELY FOR THE DISTRIBUTION OF AVAILABLE DEPTHS AT THE TIME OF THE SURVEY AND IS NOT TO BE USED FOR NAVIGATION.
- SURVEY ACCURACY PERFORMANCE STANDARDS, QUALITY CONTROL, AND QUALITY ASSURANCE REQUIREMENTS WERE FOLLOWED DURING THIS SURVEY IN ACCORDANCE WITH USACE EM 1110-2-1003, HYDROGRAPHIC SURVEYING, 1 JAN 02.

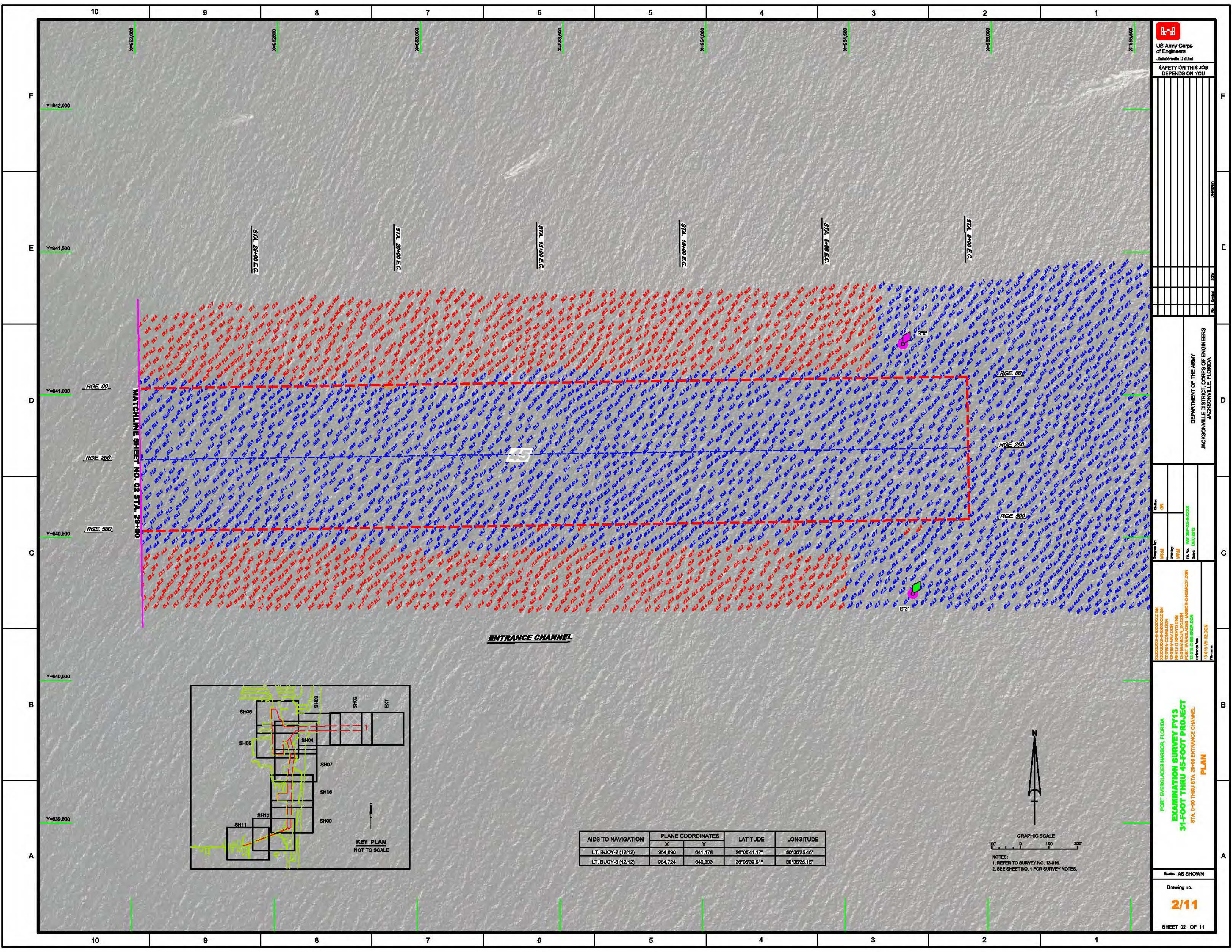
LEGEND	
	MONUMENT
	LIGHTED BEACON
	GREEN DAY BEACON
	RED DAY BEACON
	RED LIGHTED BUOY
	GREEN LIGHTED BUOY
	CAN BUOY
	NUN BUOY
	TIDE STAFF
	PROJECT DEPTH

US Army Corps of Engineers
Jacksonville District
SAFETY ON THIS JOB DEPENDS ON YOU

DEPARTMENT OF THE ARMY
JACKSONVILLE DISTRICT, CORPS OF ENGINEERS
JACKSONVILLE, FLORIDA

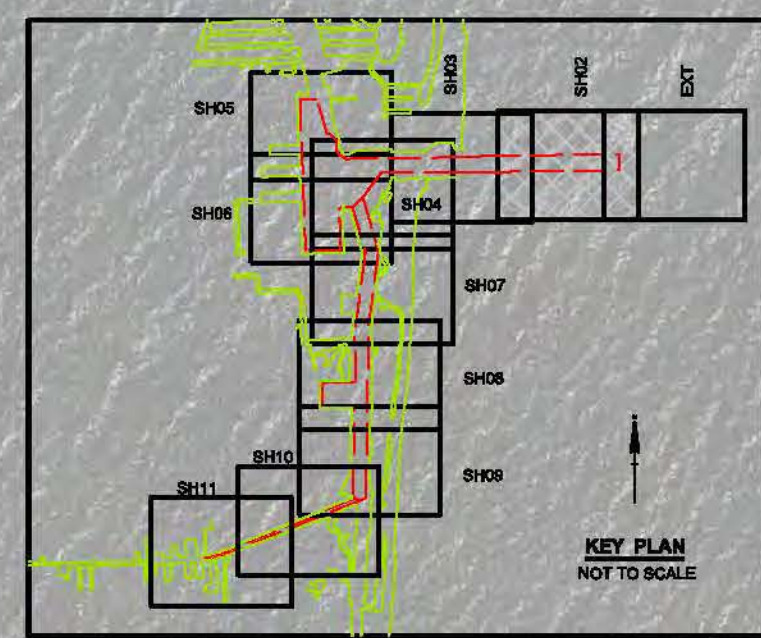
PORT EVERGLADES HARBOR, FLORIDA
EXAMINATION SURVEY FY13
31-FOOT THRU 45-FOOT PROJECT
INDEX, LOCATION AND VICINITY
MAP

Scale: AS SHOWN
Drawing no. 1/11
SHEET 01 OF 11

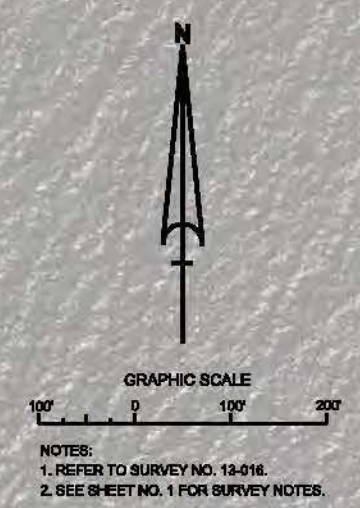


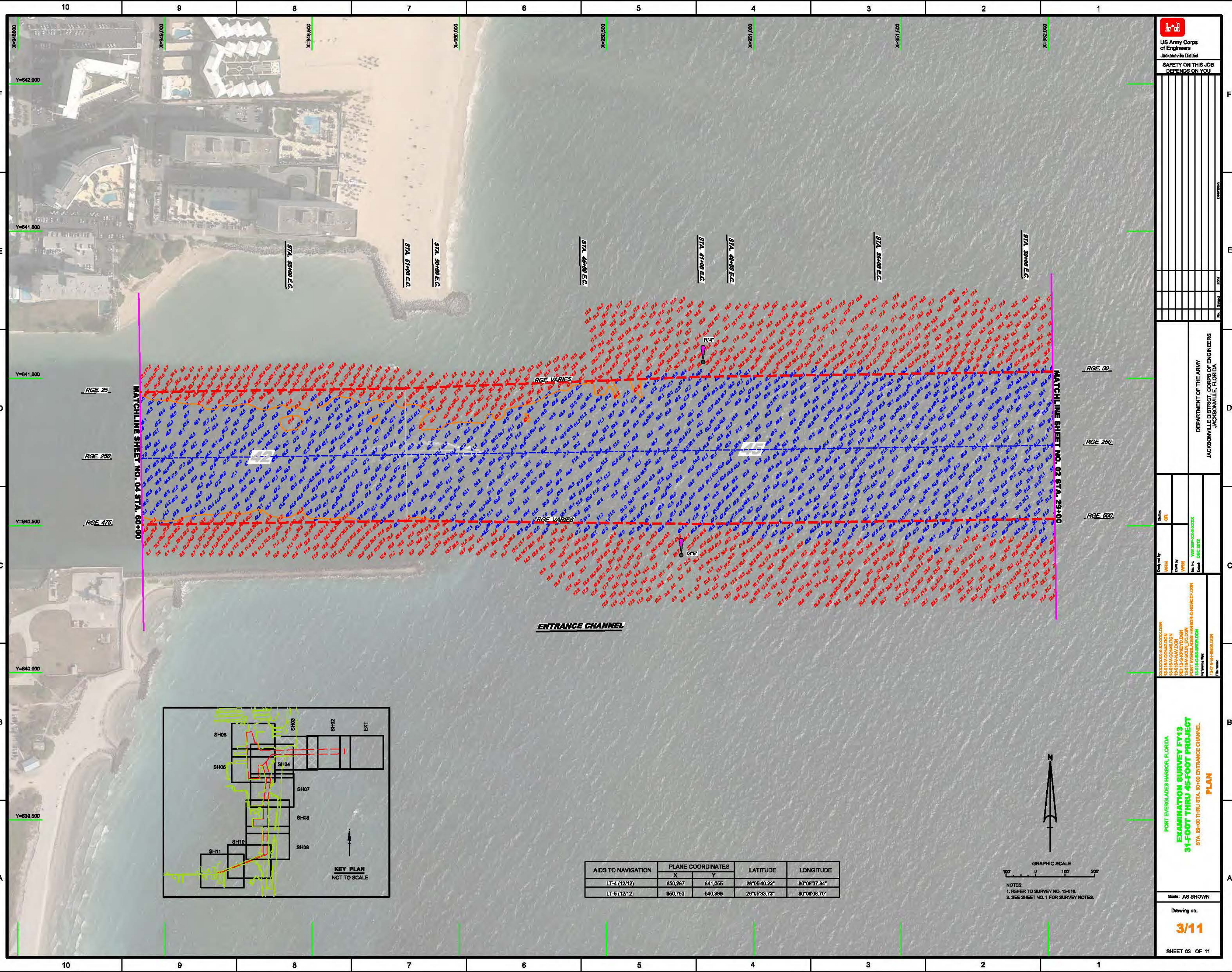
MATCHLINE SHEET NO. 02 STA. 29+00

ENTRANCE CHANNEL



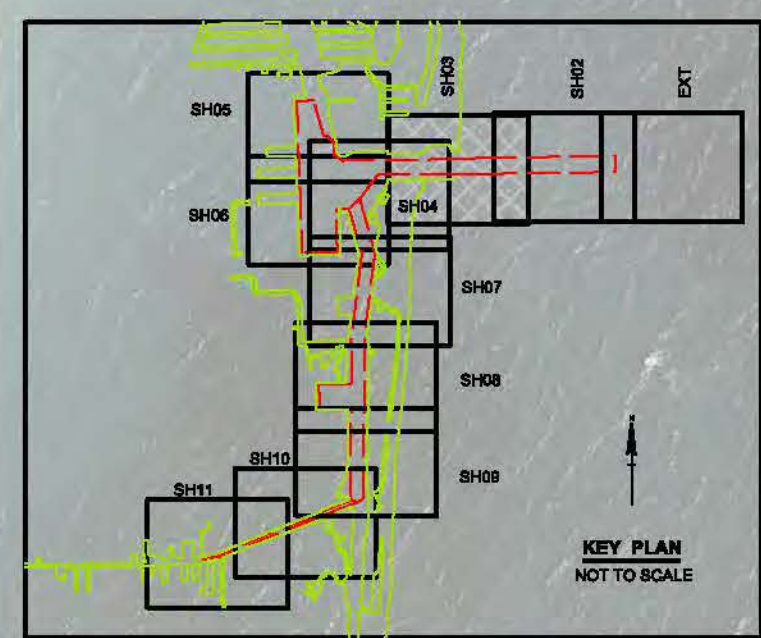
AIDS TO NAVIGATION	PLANE COORDINATES		LATITUDE	LONGITUDE
	X	Y		
LT. BUOY-2 (12/12)	954,690	641,178	28°08'41.17"	80°06'25.46"
LT. BUOY-3 (12/12)	654,724	840,303	28°09'32.51"	80°05'25.15"



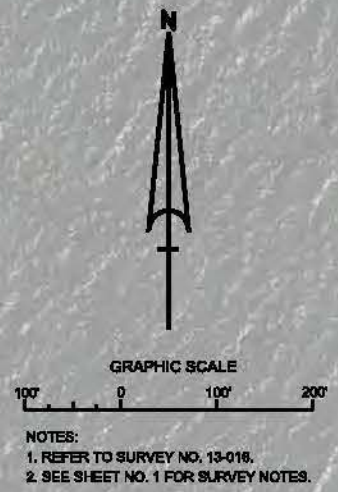


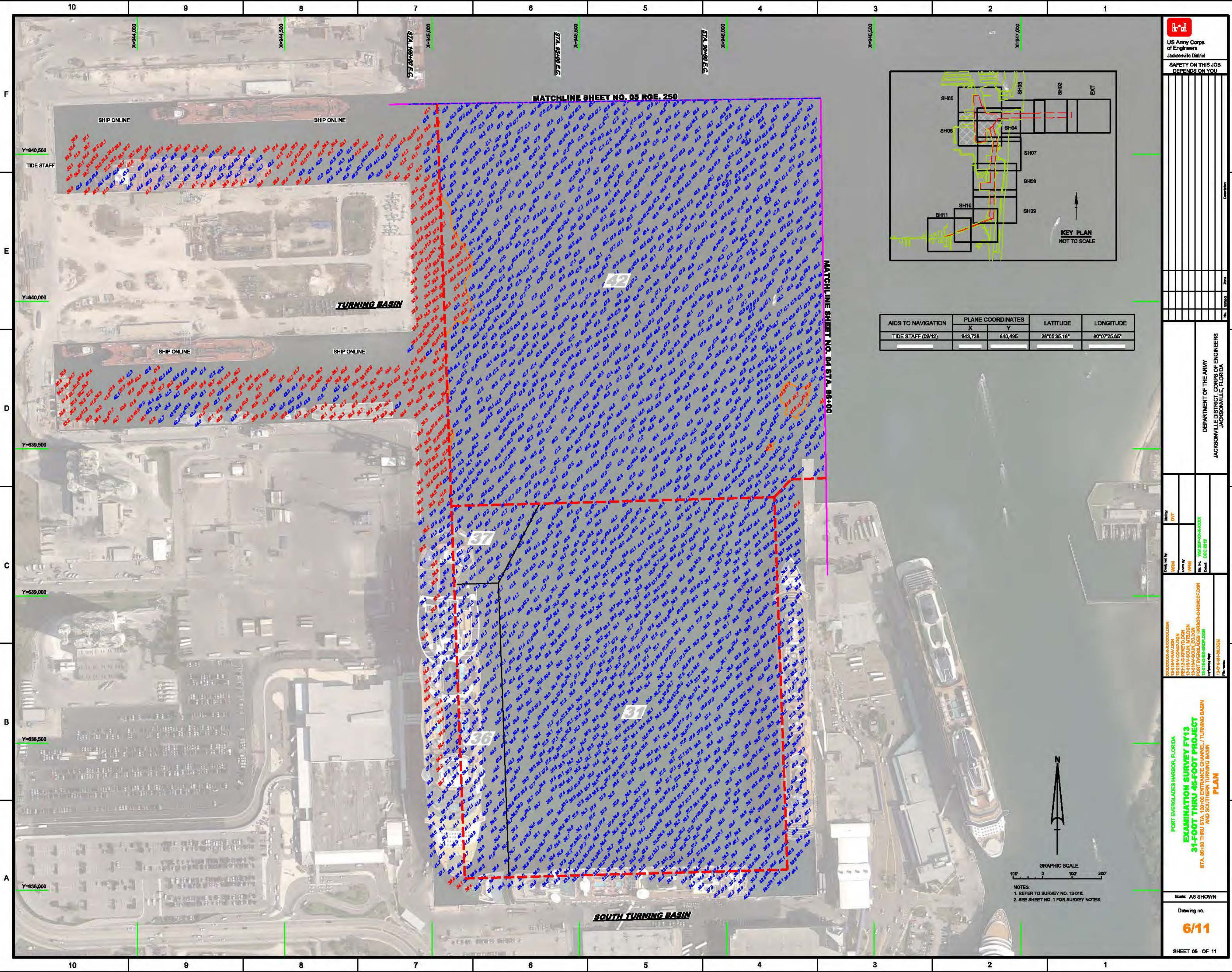
MATCHLINE SHEET NO. 04 STA. 60+00

MATCHLINE SHEET NO. 02 STA. 29+00



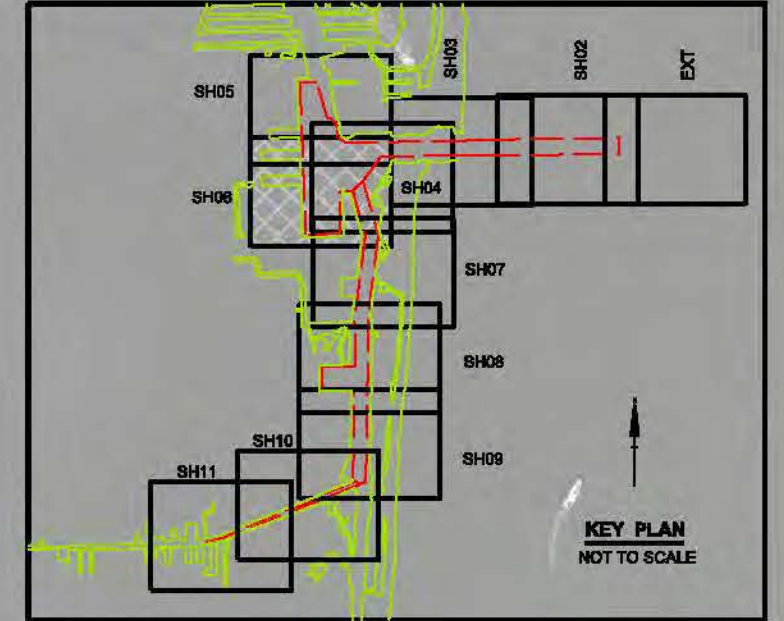
AIDS TO NAVIGATION	PLANE COORDINATES		LATITUDE	LONGITUDE
	X	Y		
LT-4 (12/12)	950,267	641,055	28°06'40.22"	80°06'07.84"
LT-5 (12/12)	960,763	640,399	28°06'33.73"	80°06'08.70"



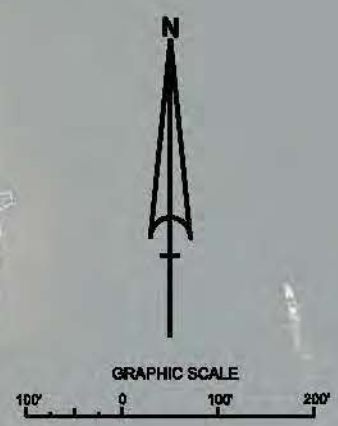


MATCHLINE SHEET NO. 05 RGE. 250

MATCHLINE SHEET NO. 04 STA. 86+00



AIDS TO NAVIGATION	PLANE COORDINATES		LATITUDE	LONGITUDE
	X	Y		
TIDE STAFF (02/12)	943,736	640,495	28°05'35.16"	80°07'25.65"



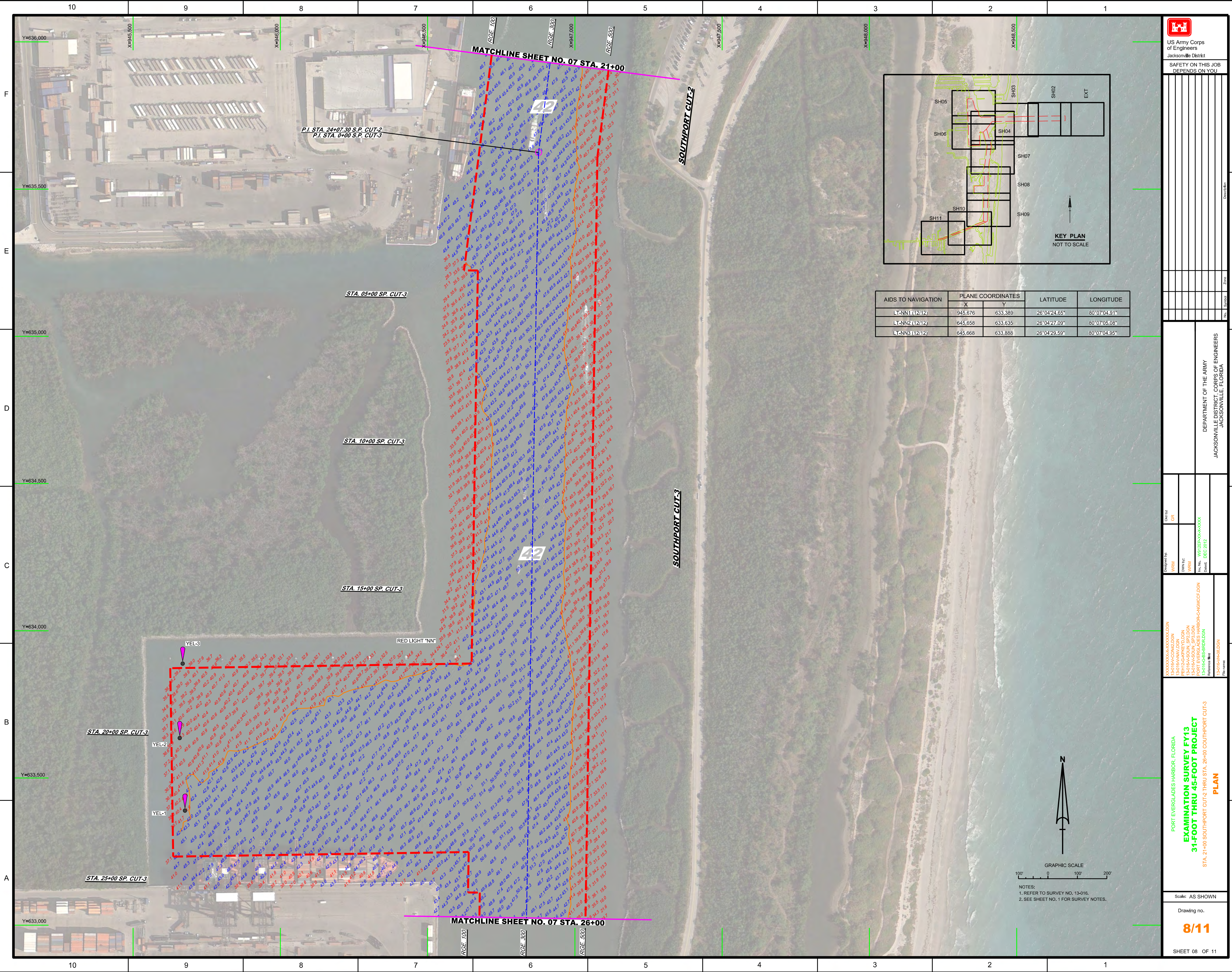
NOTES:
 1. REFER TO SURVEY NO. 13-016.
 2. SEE SHEET NO. 1 FOR SURVEY NOTES.

US Army Corps of Engineers
 Jacksonville District
 SAFETY ON THIS JOB
 DEPENDS ON YOU

DEPARTMENT OF THE ARMY
 JACKSONVILLE DISTRICT, CORPS OF ENGINEERS
 JACKSONVILLE, FLORIDA

PORT EVERGLADES HARBOR, FLORIDA
 EXAMINATION SURVEY FY13
 31-FOOT THRU 45-FOOT PROJECT
 STA. 86+00 THRU STA. 100+00 ENTRANCE CHANNEL/TURNING BASIN
 AND SOUTHERN TURNING BASIN
 PLAN

Scale: AS SHOWN
 Drawing no.
6/11
 SHEET 06 OF 11



P.I. STA. 24+07.30 S.P. CUT-2
P.I. STA. 0+00 S.P. CUT-3

STA. 05+00 S.P. CUT-3

STA. 10+00 S.P. CUT-3

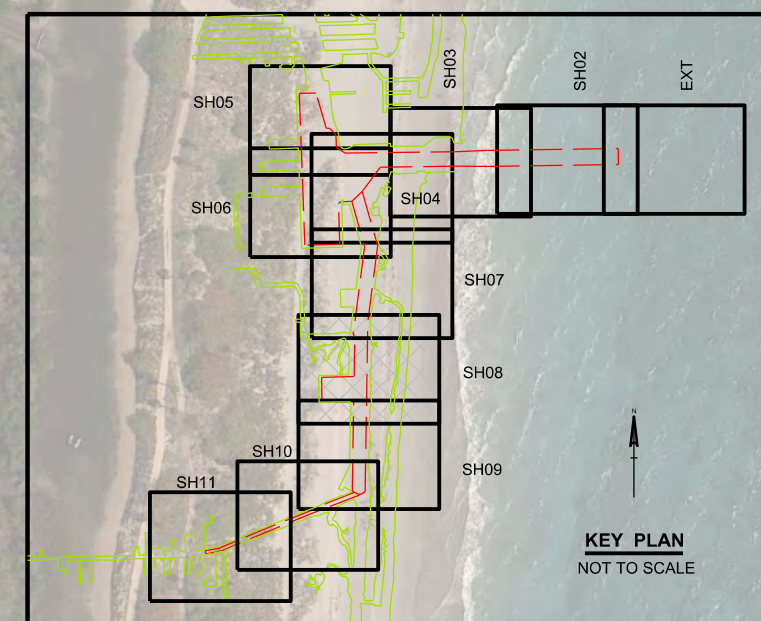
STA. 15+00 S.P. CUT-3

STA. 20+00 S.P. CUT-3

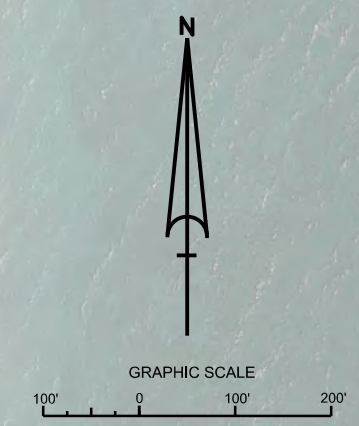
STA. 25+00 S.P. CUT-3

MATCHLINE SHEET NO. 07 STA. 21+00


MATCHLINE SHEET NO. 07 STA. 26+00



AIDS TO NAVIGATION	PLANE COORDINATES		LATITUDE	LONGITUDE
	X	Y		
LT-NN1 (12/12)	945.676	633.389	26°04'24.65"	80°07'04.91"
LT-NN2 (12/12)	645.658	633.635	26°04'27.09"	80°07'05.08"
LT-NN3 (12/12)	645.668	633.888	26°04'29.59"	80°07'04.95"



NOTES:
1. REFER TO SURVEY NO. 13-016.
2. SEE SHEET NO. 1 FOR SURVEY NOTES.

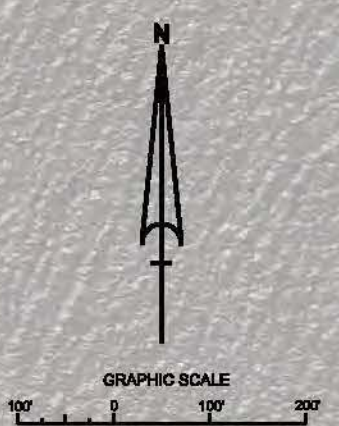
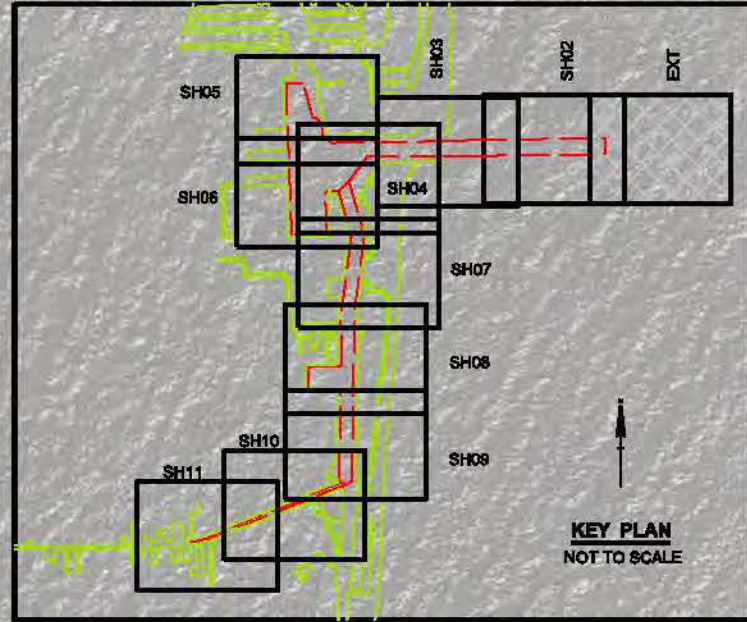
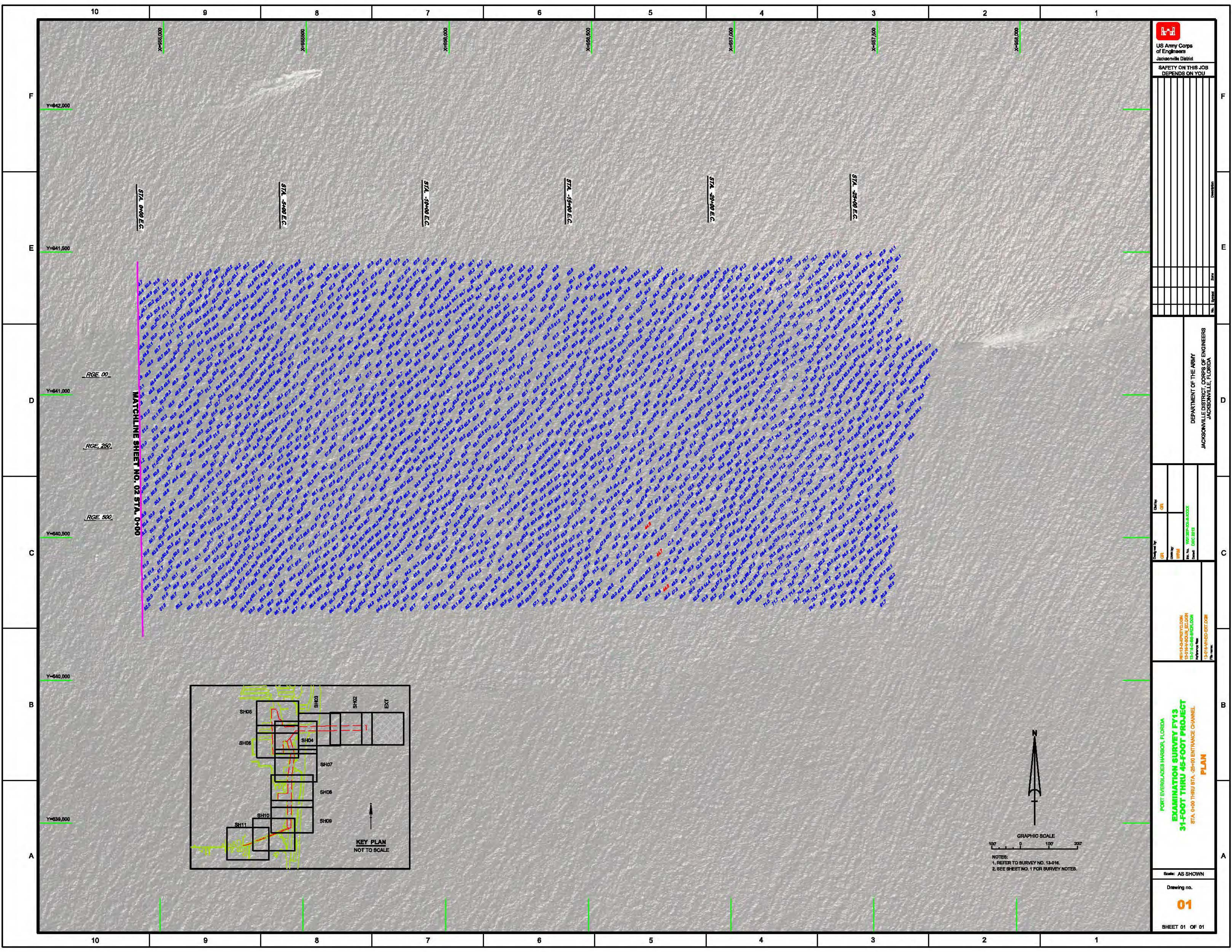


US Army Corps of Engineers
Jacksonville District
SAFETY ON THIS JOB
DEPENDS ON YOU

DEPARTMENT OF THE ARMY
JACKSONVILLE DISTRICT, CORPS OF ENGINEERS
JACKSONVILLE, FLORIDA

PORT EVERGLADES HARBOR, FLORIDA
EXAMINATION SURVEY FY13
31-FOOT THRU 45-FOOT PROJECT
STA. 21+00 SOUTHPORT CUT-2 THRU STA. 26+00 SOUTHPORT CUT-3
PLAN

Scale: AS SHOWN
Drawing no.
8/11
SHEET 08 OF 11



NOTES:
 1. REFER TO SURVEY NO. 13-016.
 2. SEE SHEET NO. 1 FOR SURVEY NOTES.

<p>US Army Corps of Engineers Jacksonville District</p>	
<p>SAFETY ON THIS JOB DEPENDS ON YOU</p>	
<p>DEPARTMENT OF THE ARMY JACKSONVILLE DISTRICT, CORPS OF ENGINEERS JACKSONVILLE, FLORIDA</p>	
<p>Checked by: GRL</p>	<p>Drawn by: WPM</p>
<p>Approved by: GRL</p>	<p>Date: DEC 2013</p>
<p>PORT EVERGLADES HARBOR, FLORIDA EXAMINATION SURVEY FY13 31-FOOT THRU STA. 25+00 ENTRANCE CHANNEL PLAN</p>	
<p>Scale: AS SHOWN</p>	
<p>Drawing no. 01</p>	
<p>SHEET 01 OF 01</p>	