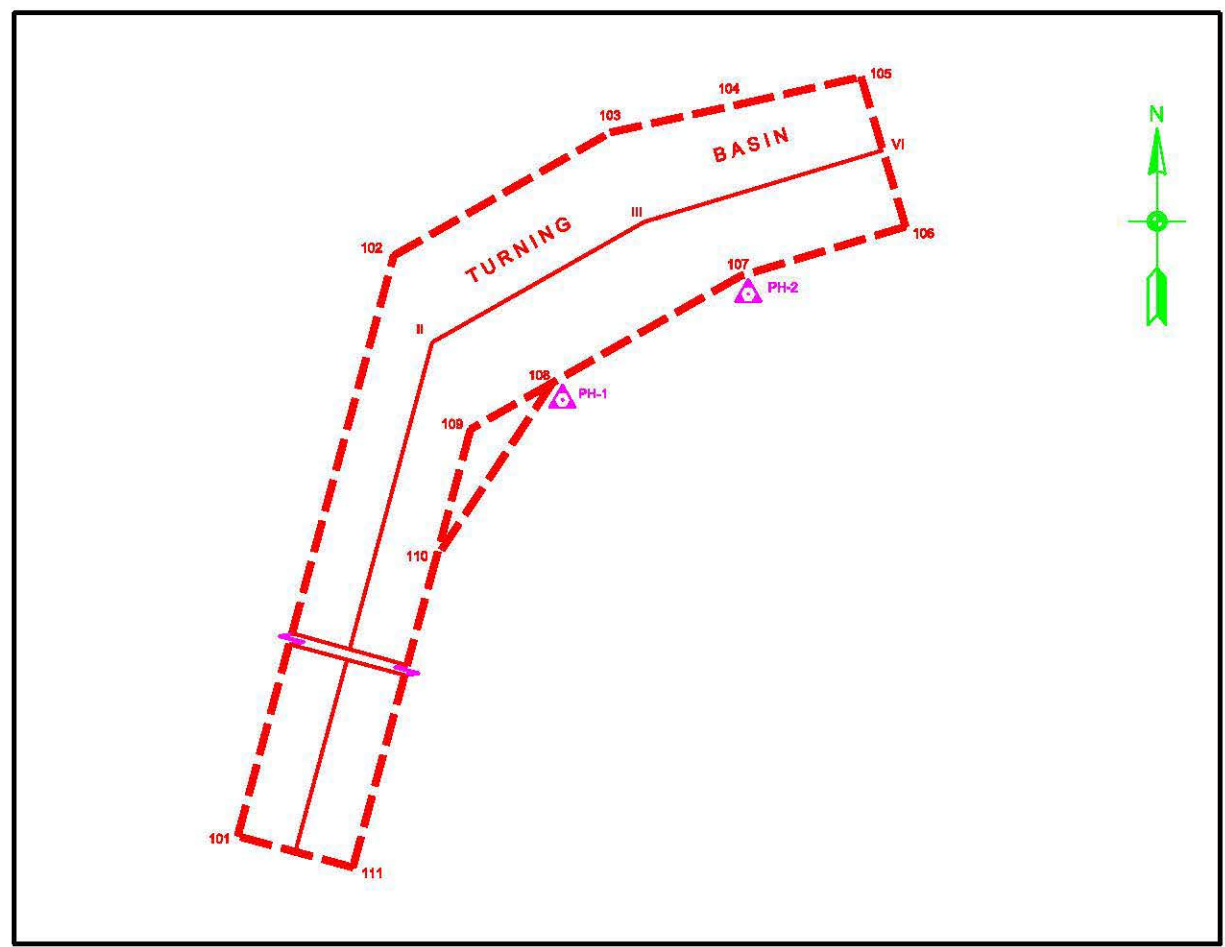
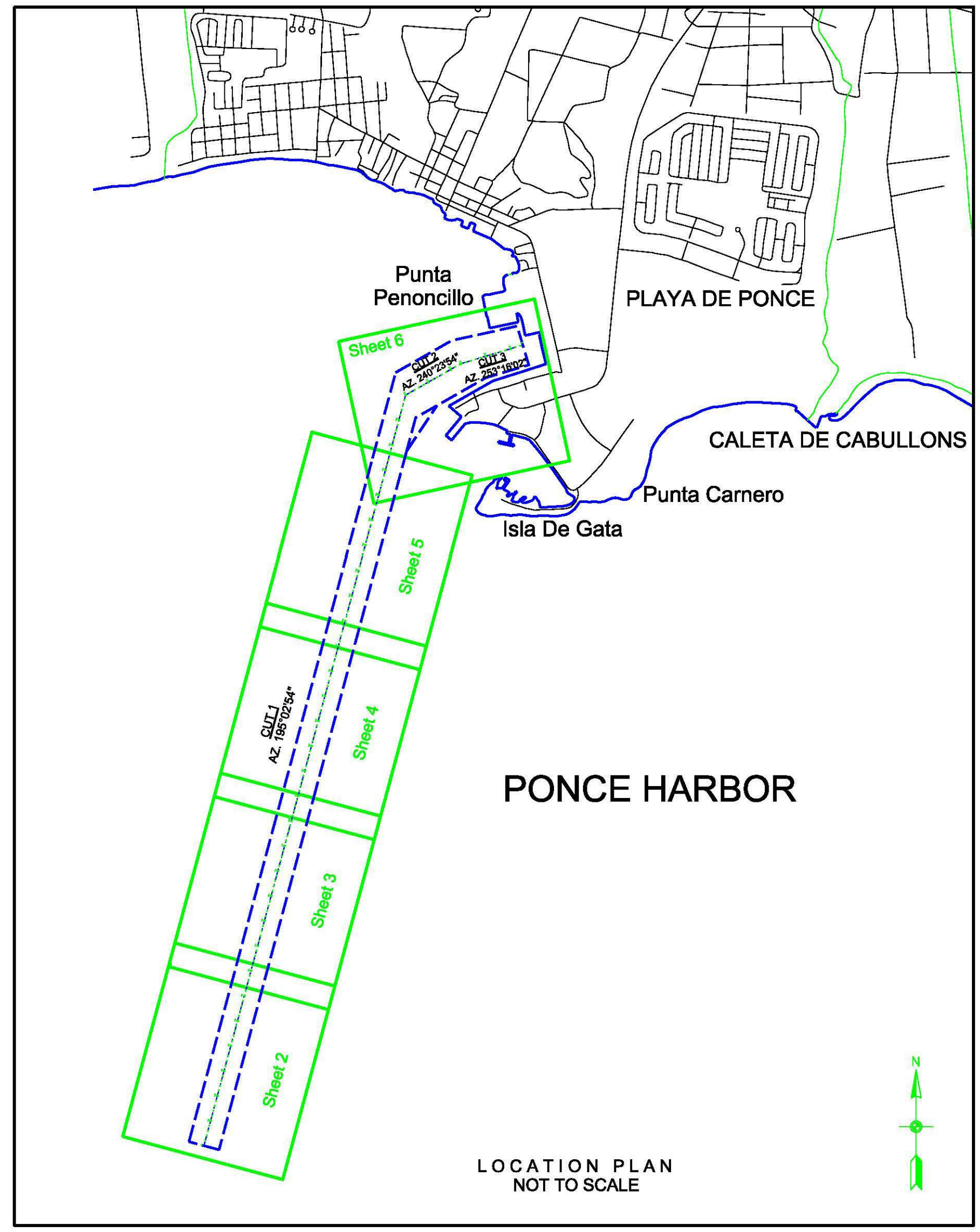




# PONCE HARBOR, PUERTO RICO HYDROGRAPHIC EXAMINATION SURVEY



CONTROL COORDINATES			
POINT NAME	NORTHING	EASTING	NGS UNADJUSTED PRVD02 ELEV
PH-1 USE	705412.51	590885.72	5.55
PH-2			5.71

CHANNEL CENTER LINE COORDINATES			
CUT	NORTHING	EASTING	STATION
CUT-1	691212.65	586333.81	0+00
CUT-1			150+00
CUT-2	705698.26	590228.32	0+00
CUT-2			12+27
CUT-3	706304.16	591294.83	0+00
CUT-3			12+50

CHANNEL LIMIT COORDINATES		
POINT NUMBER	NORTHING	EASTING
101	691290.54	586044.10
102	706134.74	590035.01
103	706752.98	591123.25
104	706897.25	591788.02
105	707031.33	592381.87
106	706280.68	592606.05
107	706031.04	591775.70
108	705496.27	590834.38
109	705261.78	590421.62
110	704615.26	590247.80
111	691134.76	586623.53

- SURVEY NOTES:**
- REFER TO SURVEY NO. 13-002.
  - DEPTHS DEPICTED BY THIS SURVEY ARE REFERENCED TO MEAN LOWER LOW WATER (MLLW), TIDAL EPOCH 1983-2001, AS REPORTED BY THE NATIONAL OCEANIC AND ATMOSPHERIC ADMINISTRATION (NOAA). NOAA'S VDATUM MODEL WAS USED AND IS COMPUTED AS 0.27 FEET BELOW PRVD02.
  - ALL ELEVATIONS ARE BELOW THE CHART DATUM UNLESS PRECEDED BY A (+) SIGN.
  - TIDAL REDUCTIONS WERE MADE USING RTK GPS AND CALIBRATED TO THE COMPUTED MLLW HEIGHT OF THE BENCH MARK SPECIFIED BELOW:  
COE "PH-1" FOR ENTIRE PROJECT
  - PLANE COORDINATES ARE BASED ON THE LAMBERT CONIC PROJECTION FOR PUERTO RICO AND THE U.S. VIRGIN ISLANDS, NORTH ZONE, AND REFERENCED TO NORTH AMERICAN DATUM OF 1983 (NAD83).
  - ALL AZIMUTHS ARE GRID; RECKONED CLOCKWISE FROM SOUTH.
  - ALL STATIONING REFERS TO THE CENTERLINE OF THE CHANNEL.
  - THIS SURVEY WAS PERFORMED USING REAL-TIME KINEMATIC (RTK) GPS POSITIONING WITH THE FOLLOWING REFERENCE BASE LOCATION:  
REFERENCE BASE LOCATED AT "PH-1" (OPUS PID# TV0001)
  - VERTICAL MEASUREMENTS WERE MADE USING A ROSS MODEL 835 SMART SOUNDER WITH DUAL-FREQUENCY TRANSDUCER. SOUNDINGS SHOWN ARE IN HIGH-FREQUENCY (200KHZ).
  - VESSEL**      **DATE OF SURVEY**      **AREA SURVEYED**  
SB-38      7 & 9 NOV 2012      CUT-1, 2, 3 & MUNICIPAL PIER
  - AIDS TO NAVIGATION WERE LOCATED DURING THIS SURVEY.
  - THE INFORMATION DEPICTED ON THIS MAP REPRESENTS THE RESULTS OF SURVEYS MADE ON THE DATES INDICATED ABOVE AND CAN ONLY BE CONSIDERED AS INDICATING THE GENERAL CONDITIONS AT THAT TIME. THIS CHART IS SOLELY FOR THE DISTRIBUTION OF AVAILABLE DEPTHS AT THE TIME OF THE SURVEY AND IS NOT TO BE USED FOR NAVIGATION.
  - SURVEY ACCURACY PERFORMANCE STANDARDS, QUALITY CONTROL, AND QUALITY ASSURANCE REQUIREMENTS WERE FOLLOWED DURING THIS SURVEY IN ACCORDANCE WITH USACE EM 1110-2-1003, HYDROGRAPHIC SURVEYING, 1 JAN 02.

NO.	SYM.	ZONE	DESCRIPTION

DATE: NOV 2012	SOLICITATION NO.:	CONTRACT NO.:	FILE NUMBER:
DESIGNED BY:	DRAWN BY: J.M.W.	SUBMITTED BY:	PLOT DATE:
DEPARTMENT OF THE ARMY CORPS OF ENGINEERS JACKSONVILLE DISTRICT JACKSONVILLE, FLORIDA			
FILE NAME: 13-002-PONCEHARBOR-VH001.DGN			

Ponce Harbor, Puerto Rico  
**HYDROGRAPHIC EXAMINATION SURVEY**  
**38-FOOT PROJECT**  
 COVER SHEET AND LOCATION MAP  
**PLAN**



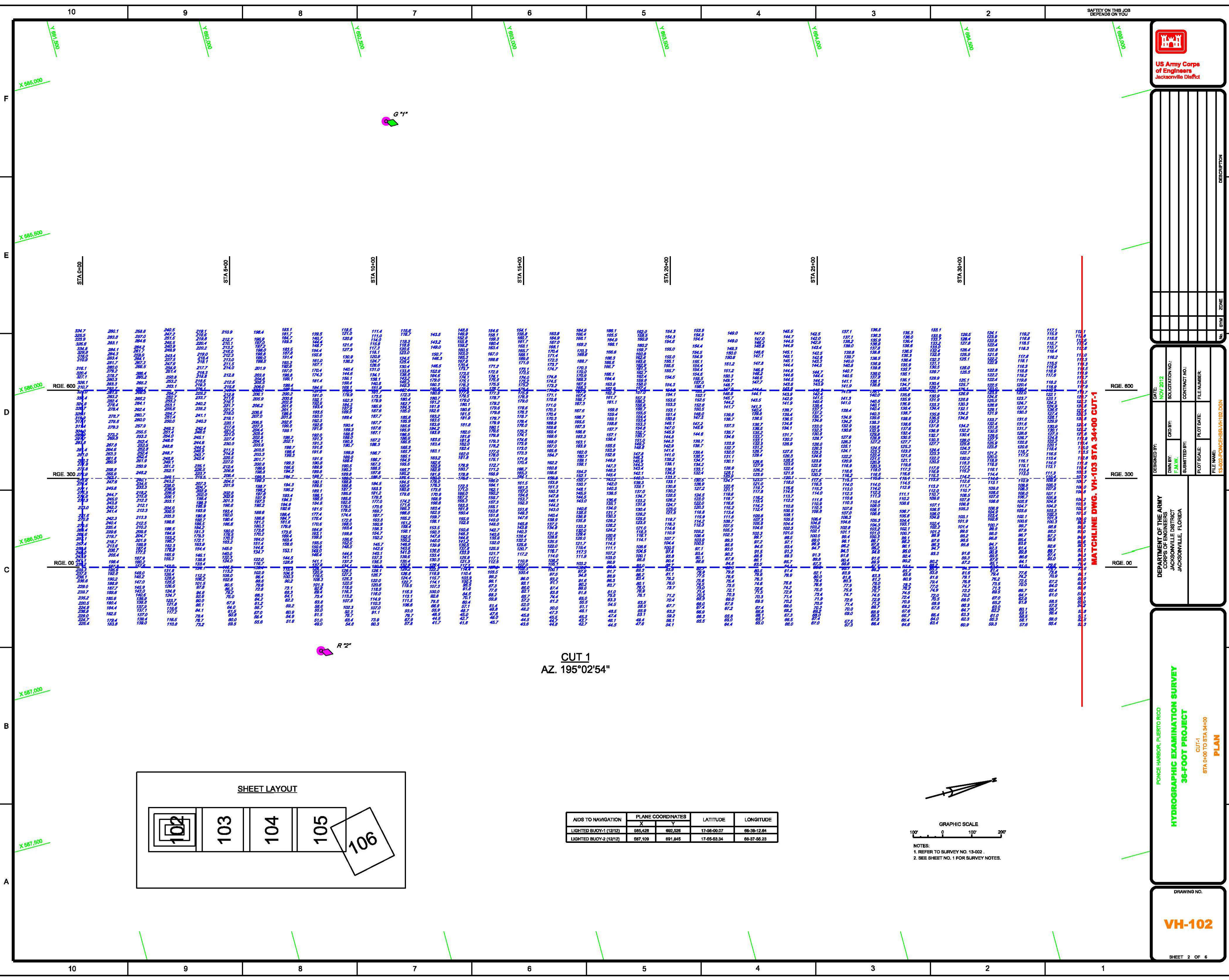
NO.	SYM.	ZONE	DESCRIPTION

DATE: <b>NOV 2012</b>	SOLICITATION NO.:	CONTRACT NO.:
DESIGNED BY:	DRAWN BY:	FIELD CHECKED BY:
ISSUED BY:	FILE NUMBER:	

**DEPARTMENT OF THE ARMY**  
**CORPS OF ENGINEERS**  
**JACKSONVILLE DISTRICT**  
**JACKSONVILLE, FLORIDA**

**HYDROGRAPHIC EXAMINATION SURVEY**  
**38-FOOT PROJECT**  
**PLAN**

DRAWING NO. **VH-102**  
 SHEET 2 OF 6



STA 0+00

STA 5+00

STA 10+00

STA 15+00

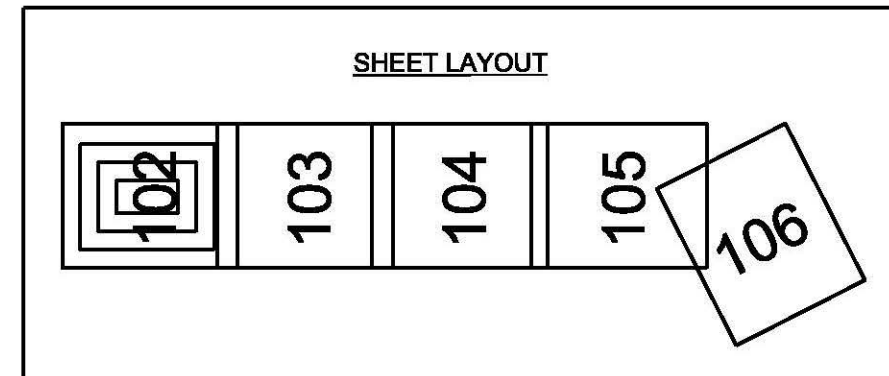
STA 20+00

STA 25+00

STA 30+00

MATCHLINE DWG. VH-103 STA 34+00 CUT-1

CUT 1  
AZ. 195°02'54"



AIDS TO NAVIGATION	PLANE COORDINATES		LATITUDE	LONGITUDE
	X	Y		
LIGHTED BUOY-1 (12/12)	685,428	692,526	17-56-00.07	66-38-12.84
LIGHTED BUOY-2 (12/12)	687,109	691,845	17-55-53.34	66-37-56.23

