

MIAMI RIVER DADE COUNTY, FLORIDA POST-TROPICAL STORM ISAAC EXAMINATION SURVEY 15-FOOT PROJECT

SURVEY NOTES

- REFER TO SURVEY NO. 12-193.
- SOUNDINGS ARE IN FEET AND TENTHS AND REFER TO NOAA'S REPORTED MEAN LOWER LOW WATER (MLLW) OF THE 1983-2001 TIDAL EPOCH.
- TIDAL REDUCTIONS WERE OBTAINED UTILIZING A REAL-TIME KINEMATIC (RTK) GPS AND REFERENCED TO MLLW UTILIZING A HYPACK KINEMATIC TIDE DATUM (KTD) MODEL. ANY THIRD PARTY ATTEMPT TO DUPLICATE THIS SURVEY SHALL OBTAIN THE LATEST KINEMATIC TIDE DATUM MODEL (KTD FILE) AVAILABLE FROM USACE JACKSONVILLE DISTRICT.
- ALL ELEVATIONS ARE BELOW THE CHART DATUM UNLESS PRECEDED BY A (+) SIGN.
- PLANE COORDINATES ARE BASED ON THE TRANSVERSE MERCATOR PROJECTION FOR THE EAST ZONE OF FLORIDA AND REFERENCED TO NORTH AMERICAN DATUM OF 1983 (NAD83).
- ALL AZIMUTHS ARE GRID; RECKONED CLOCKWISE FROM SOUTH.
- ALL STATIONING REFERS TO THE CENTERLINE OF THE CHANNEL.
- THIS SURVEY WAS PERFORMED USING REAL-TIME KINEMATIC ALONG WITH POST-PROCESSED KINEMATIC GPS POSITIONING WITH THE FOLLOWING REFERENCE BASE LOCATIONS:
 *REFERENCE BASE LOCATED AT "PT 03" (OPUS PID: BBCV03)
 *TIDE STAFF LOCATED FROM "MH16 RM1" (NGS PID: AC2178)
 VERTICAL MEASUREMENTS WERE MADE USING AN EDGETECH 4600 SWATH BATHYMETRY OPERATING AT 230 KHZ. AND/OR A ROSS 835 SMARTSOUNDER OPERATING AT 28/200 KHZ. ALL SOUNDINGS SHOWN ARE IN HIGH FREQUENCY.
- AIDS TO NAVIGATION WERE NOT LOCATED DURING THIS SURVEY.
- THE INFORMATION DEPICTED ON THIS MAP REPRESENTS THE RESULTS OF OF SURVEYS MADE ON THE DATES INDICATED ABOVE AND CAN ONLY BE CONSIDERED AS INDICATING THE GENERAL CONDITIONS AT THAT TIME. THIS CHART IS SOLELY FOR THE DISTRIBUTION OF AVAILABLE DEPTHS AT THE TIME OF THE SURVEY AND IS NOT TO BE USED FOR NAVIGATION.
- SURVEY ACCURACY PERFORMANCE STANDARDS, QUALITY CONTROL, AND QUALITY ASSURANCE REQUIREMENTS WERE FOLLOWED DURING THIS SURVEY IN ACCORDANCE WITH USACE EM 1110-2-1003, HYDROGRAPHIC SURVEYING, 1 JAN 02.

VESSEL	DATE OF SURVEY	CUTS
WB-32	27 AUG 2012	2 - 48

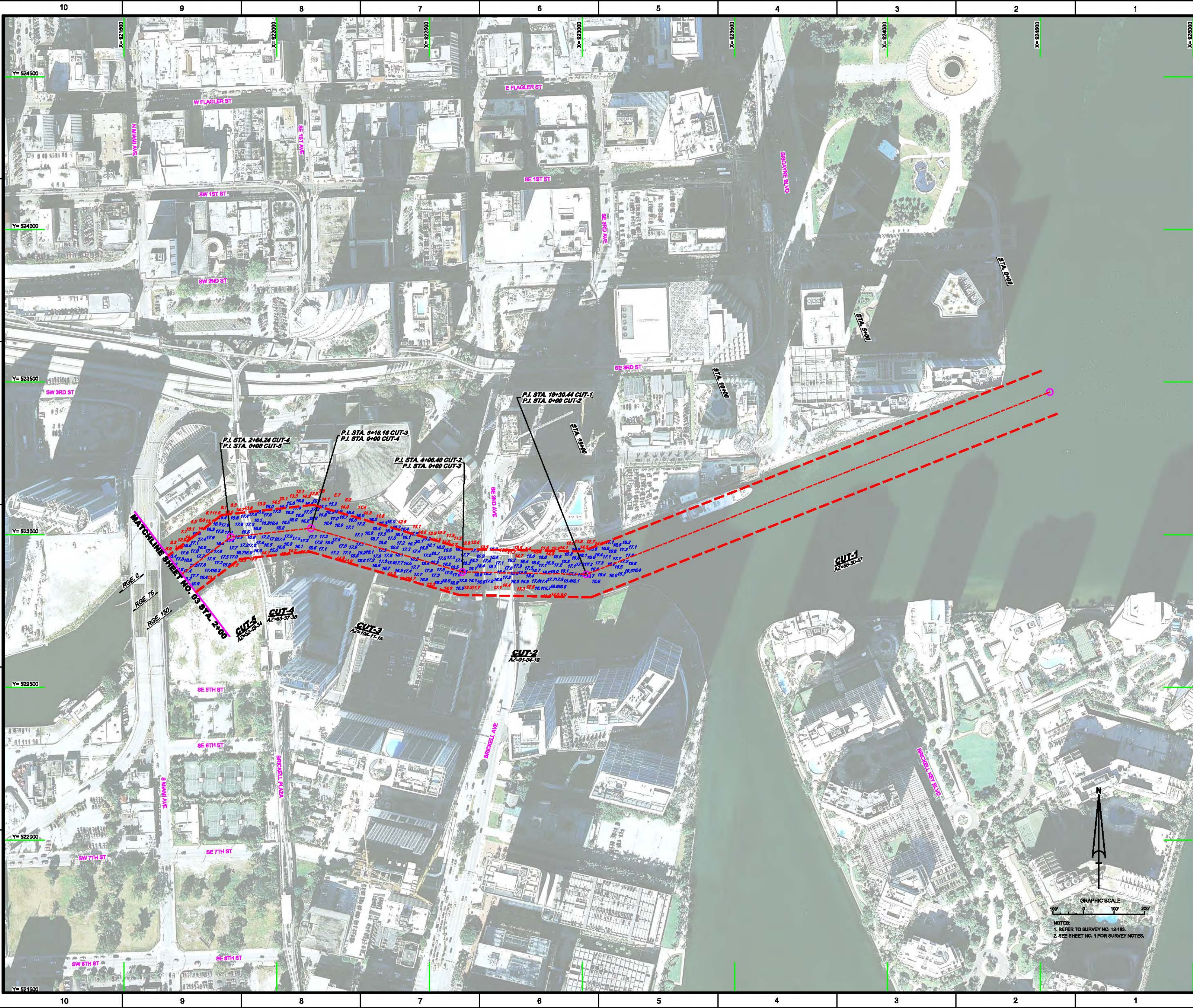
LEGEND	
	BENCHMARK
	LIGHTED BEACON
	GREEN DAYBEACON
	RED DAYBEACON
	RED LIGHTED BUOY
	GREEN LIGHTED BUOY
	CAN BUOY
	NUN BUOY
	TIDE STAFF
	PROJECT DEPTH

US Army Corps of Engineers
Jacksonville District
SAFETY ON THIS JOB DEPENDS ON YOU

DEPARTMENT OF THE ARMY
JACKSONVILLE DISTRICT, CORPS OF ENGINEERS
JACKSONVILLE, FLORIDA

MIAMI, DADE COUNTY, FLORIDA
MIAMI RIVER
POST-TROPICAL STORM ISAAC
HYDRO EXAMINATION SURVEY
15-FOOT PROJECT
INDEX, LOCATION AND VICINITY
MAP

Scale: AS SHOWN
Drawing no. 1
SHEET 01 OF 11



<p>US Army Corps of Engineers Jacksonville District</p>	
<p>SAFETY ON THIS JOB DEPENDS ON YOU</p>	
<p>DEPARTMENT OF THE ARMY JACKSONVILLE DISTRICT, CORPS OF ENGINEERS JACKSONVILLE, FLORIDA</p>	
<p>Checked by: GFL</p>	<p>Drawn by: GFL</p>
<p>Reviewed by: MAM</p>	<p>Checked by: MAM</p>
<p>Approved by: MAM</p>	<p>Checked by: MAM</p>
<p>PROJECT: POST-TROPICAL STORM ISAAC HYDRO EXAMINATION SURVEY 15-FOOT PROJECT</p>	
<p>PLAN</p>	
<p>STATIONING: STA. 0+00 CUT-4 TO STA. 2+00 CUT-5</p>	
<p>NOTES: 1. REFER TO SURVEY NO. 12-183. 2. SEE SHEET NO. 1 FOR SURVEY NOTES.</p>	
<p>Scale: AS SHOWN</p>	
<p>Drawing no. 2</p>	
<p>SHEET 02 OF 11</p>	

