

ST. THOMAS HARBOR CHARLOTTE AMALIE, U.S.V.I EXAMINATION SURVEY FY12

SURVEY NOTES

- REFER TO SURVEY NO. 12-165.
 - DEPTHS DEPICTED BY THIS SURVEY ARE REFERENCED TO MLLW, TIDAL EPOCH 1983-2001 AS REPORTED BY THE NATIONAL OCEANIC AND ATMOSPHERIC ADMINISTRATION (NOAA).
NOAA TIDAL STATION 975-1639, VCHARLOTTE AMALIE, USVI FOR ENTIRE PROJECT.
 - TIDAL REDUCTIONS WERE OBTAINED UTILIZING A REAL-TIME KINEMATIC (RTK) GPS, A TIDE READER AND REFERENCED TO MLLW.
 - ALL ELEVATIONS ARE BELOW THE CHART DATUM UNLESS PRECEDED BY A (+) SIGN.
 - PLANE COORDINATES ARE BASED ON THE TRANSVERSE MERCATOR PROJECTION FOR PUERTO RICO AND VIRGIN ISLANDS AND REFERENCED TO NORTH AMERICAN DATUM OF 1983 (NAD83).
 - THIS SURVEY WAS PERFORMED USING REAL-TIME KINEMATIC (RTK) GPS POSITIONING WITH THE FOLLOWING REFERENCE BASE LOCATION:
REFERENCE BASE LOCATED AT "WESTON" (NGS PID: TV1549)
TIDE STAFF LOCATED FROM TIDAL BENCHMARK "1639 TIDAL 5" (NGS PID: DL3910)
 - VERTICAL MEASUREMENTS WERE MADE USING A ROSS SMARTSOUNDER OPERATING AT 28/200 KHZ. ALL SOUNDINGS SHOWN ARE IN HIGH FREQUENCY.
- | VESSEL | DATE OF SURVEY | CUT |
|--------------|----------------|--|
| LINE DRAGGER | 15 NOV 2012 | ENTRANCE CHANNEL |
| LINE DRAGGER | 16 NOV 2012 | USCG STA. ANCHORAGE AREA |
| LINE DRAGGER | 18 NOV 2012 | ANCHORAGE AREA, EAST & WEST GREGERIE CHANNEL |
- AIDS TO NAVIGATION WERE LOCATED DURING THIS SURVEY.
 - THE INFORMATION DEPICTED ON THIS MAP REPRESENTS THE RESULTS OF SURVEYS MADE ON THE DATES INDICATED ABOVE AND CAN ONLY BE CONSIDERED AS INDICATING THE GENERAL CONDITIONS AT THAT TIME. THIS CHART IS SOLELY FOR THE DISTRIBUTION OF AVAILABLE DEPTHS AT THE TIME OF THE SURVEY AND IS NOT TO BE USED FOR NAVIGATION.
 - SURVEY ACCURACY PERFORMANCE STANDARDS, QUALITY CONTROL AND QUALITY ASSURANCE REQUIREMENTS WERE FOLLOWED DURING THIS SURVEY IN ACCORDANCE WITH USACE EM 1110-2-1003, HYDROGRAPHIC SURVEYING, 1 JAN 02.
 - CHANNELS SHOWN ARE AN APPROXIMATION. THE LOCATION OF THE ENTRANCE CHANNEL AND THE ANCHORAGE AREA IS BASED ON A PROJECT DATUM EVALUATION REPORT (PDER) ON ST. THOMAS HARBOR, USVI SUBMITTED BY WILLIAM A. BERGEN ON 13 SEPTEMBER 2007. CENTERLINE AND CHANNEL TOE'S FOR THE EAST AND WEST GREGERIE CHANNELS WERE DERIVED FROM THE FIELD SURVEY COMPLETED ON 18 NOVEMBER 2012.

LEGEND	
	MONUMENT
	LIGHTED BEACON
	GREEN DAYBEACON
	RED DAYBEACON
	RED LIGHTED BUOY
	GREEN LIGHTED BUOY
	CAN BUOY
	NUN BUOY
	TIDE STAFF
	PROJECT DEPTH

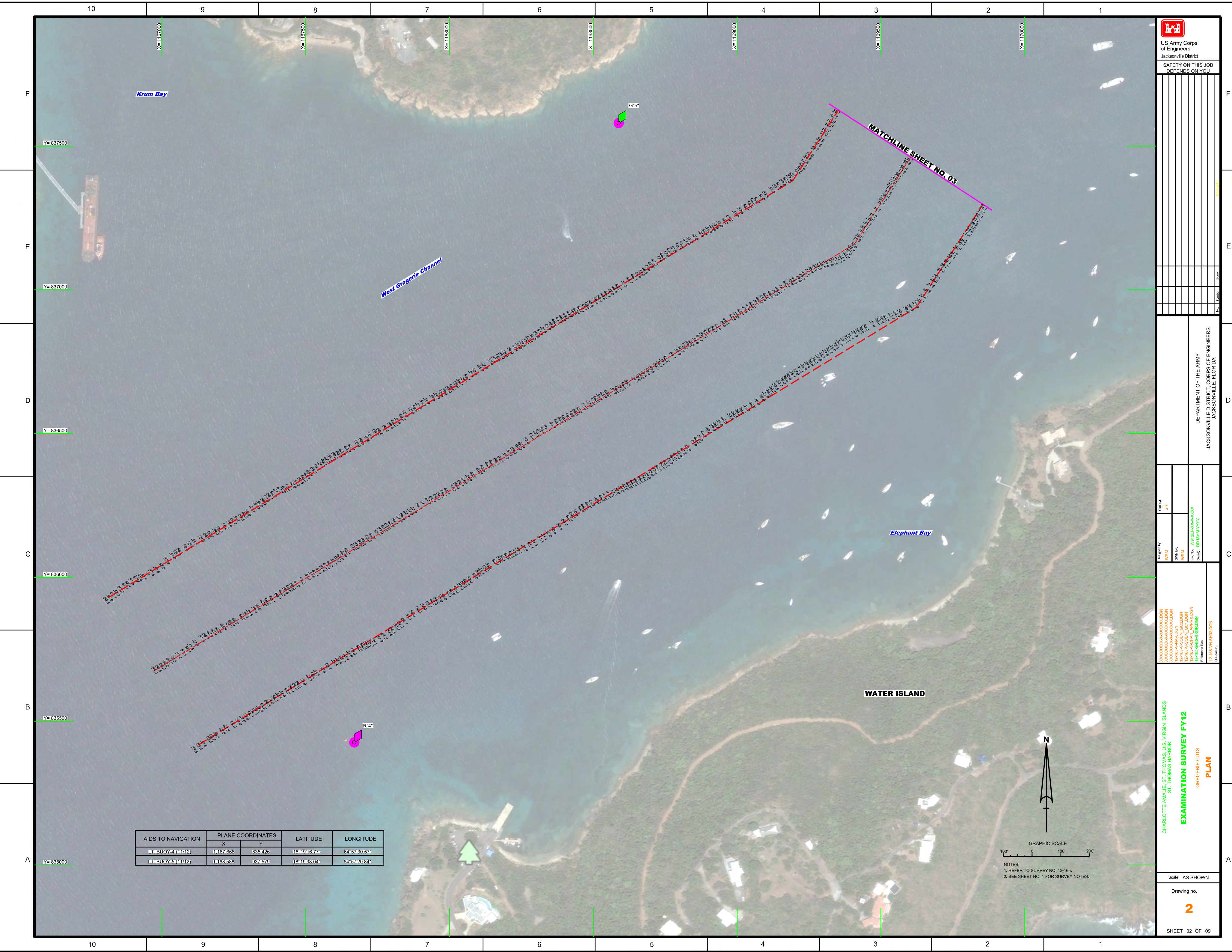
US Army Corps of Engineers
Jacksonville District
SAFETY ON THIS JOB DEPENDS ON YOU

DESIGNED BY: WRM
DRAWN BY: WRM
CHECKED BY: WRM
DATE: 02/01/12

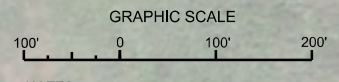
FILE NAME: 12-165-HSH01.DGN

CHARLOTTE AMALIE, ST. THOMAS, U.S. VIRGIN ISLANDS
ST. THOMAS HARBOR
EXAMINATION SURVEY FY12
INDEX, LOCATION AND VICINITY
MAP

Scale: AS SHOWN
Drawing no. 1
SHEET 01 OF 09



AIDS TO NAVIGATION	PLANE COORDINATES		LATITUDE	LONGITUDE
	X	Y		
LT BUOY-4 (11/12)	1167668	835426	18°19'16.77"	64°57'30.57"
LT BUOY-5 (11/12)	1168588	937579	18°19'38.04"	64°57'20.84"



NOTES:
1. REFER TO SURVEY NO. 12-165.
2. SEE SHEET NO. 1 FOR SURVEY NOTES.





US Army Corps
of Engineers
Jacksonville District

SAFETY ON THIS JOB
DEPENDS ON YOU

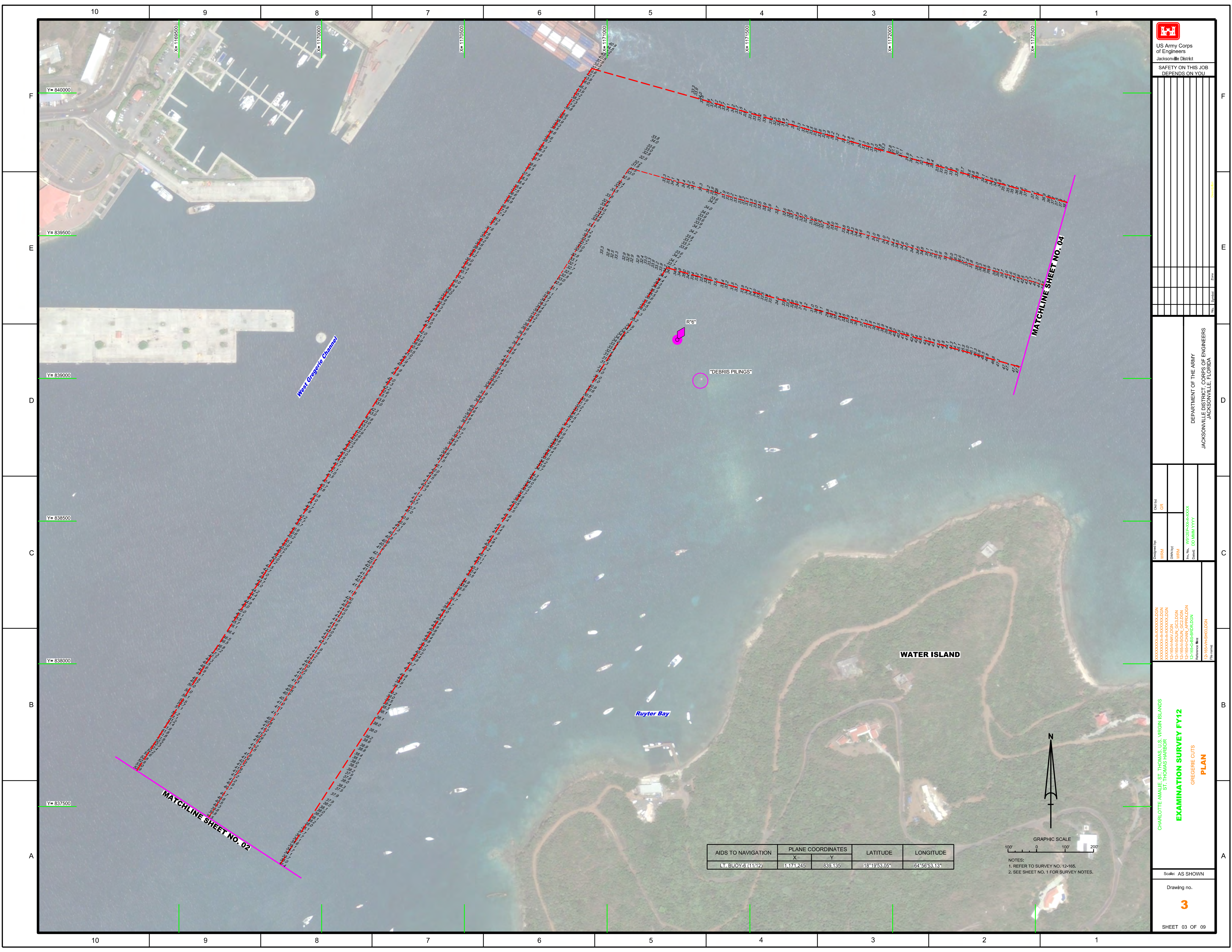
DEPARTMENT OF THE ARMY
JACKSONVILLE DISTRICT, CORPS OF ENGINEERS
JACKSONVILLE, FLORIDA

XXXXXXXXXXXXXXXXXXXX.DGN
XXXXXXXXXXXXXXXXXXXX.DGN
XXXXXXXXXXXXXXXXXXXX.DGN
13-165A-V-DONA_LOC1.DGN
13-165A-V-DONA_LOC2.DGN
13-165A-CHAM_APPROX.DGN
13-165A-CHAM_APPROX.DGN
13-165A-CHAM_APPROX.DGN
13-165A-CHAM_APPROX.DGN
13-165A-CHAM_APPROX.DGN

Checked By: GRL
Designed By: WRM
Drawn By: WRM
File No.: WRT2525-A-0000-0000
Date: 03/01/2011

CHARLOTTE ANNUE, ST. THOMAS, U.S. VIRGIN ISLANDS
ST. THOMAS HARBOR
EXAMINATION SURVEY FY12
GREGERIE CUTS
PLAN

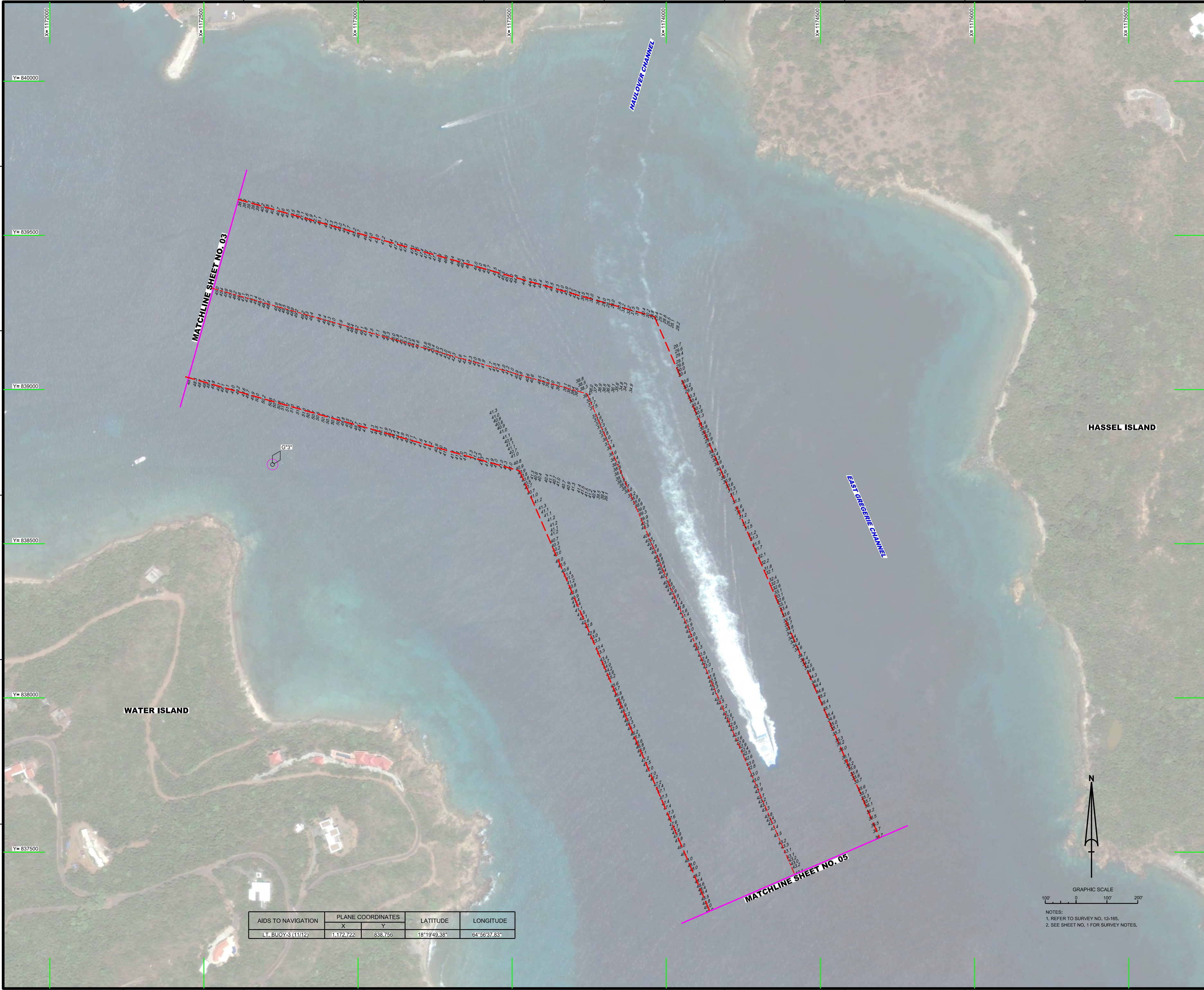
Scale: AS SHOWN
Drawing no.
3
SHEET 03 OF 09



AIDS TO NAVIGATION	PLANE COORDINATES		LATITUDE	LONGITUDE
	X	Y		
Lt. BUOY-3 (11112)	1171.245	839.135	18°19'53.05"	64°56'53.13"



NOTES:
1. REFER TO SURVEY NO. 12-165.
2. SEE SHEET NO. 1 FOR SURVEY NOTES.



US Army Corps of Engineers
 Jacksonville District
 SAFETY ON THIS JOB
 DEPENDS ON YOU

DESIGNED BY: WRM
 DRAWN BY: WRM
 FILE NO.: W12154-0000-0000
 CHECKED BY: DDJMM/YYVY
 PROJECT NO.: 12-165-HSH4.DGN
 DATE: 12-165-HSH4.DGN

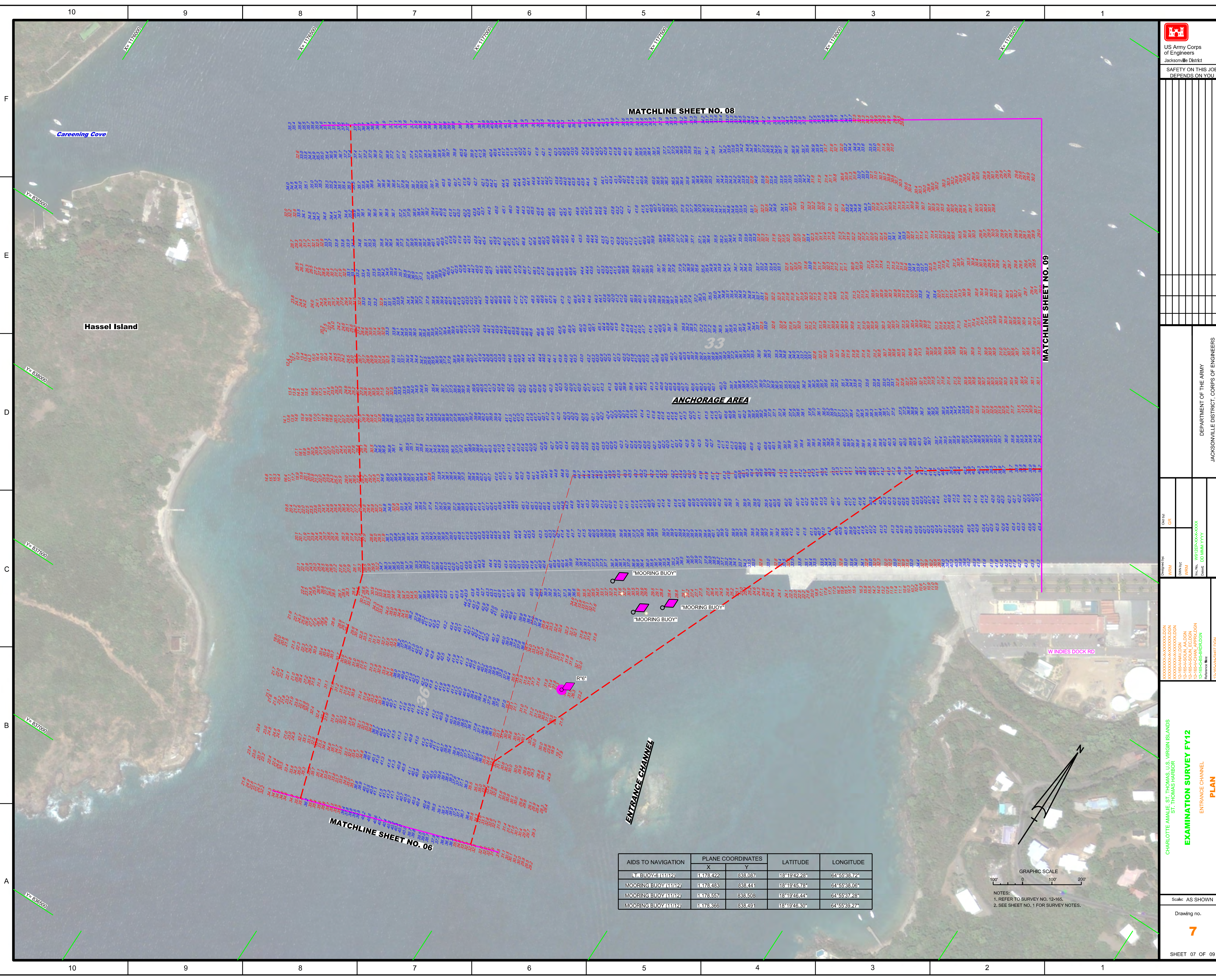
CHARLOTTE ANNIE, ST. THOMAS, U.S. VIRGIN ISLANDS
 ST. THOMAS HARBOR
EXAMINATION SURVEY FY12
 GREGERIE CUTS
PLAN

Scale: AS SHOWN
 Drawing no.
4

SHEET 04 OF 09

AIDS TO NAVIGATION	PLANE COORDINATES		LATITUDE	LONGITUDE
	X	Y		
LT. BUOY-3 (11/12)	1172722	838756	18°19'49.38"	64°56'37.83"

GRAPHIC SCALE
 100' 0 100' 200'
 NOTES:
 1. REFER TO SURVEY NO. 12-165.
 2. SEE SHEET NO. 1 FOR SURVEY NOTES.



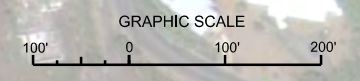
MATCHLINE SHEET NO. 08

MATCHLINE SHEET NO. 09

ANCHORAGE AREA

MOORING BUOY
MOORING BUOY
MOORING BUOY

AIDS TO NAVIGATION	PLANE COORDINATES		LATITUDE	LONGITUDE
	X	Y		
LT. BUOY-6 (11172)	1878422	838087	18°19'42.28"	64°55'38.72"
MOORING BUOY (11172)	1878433	838441	18°19'45.76"	64°55'38.06"
MOORING BUOY (11172)	1878357	838508	18°19'46.44"	64°55'37.28"
MOORING BUOY (11172)	1878366	838491	18°19'46.80"	64°55'39.27"

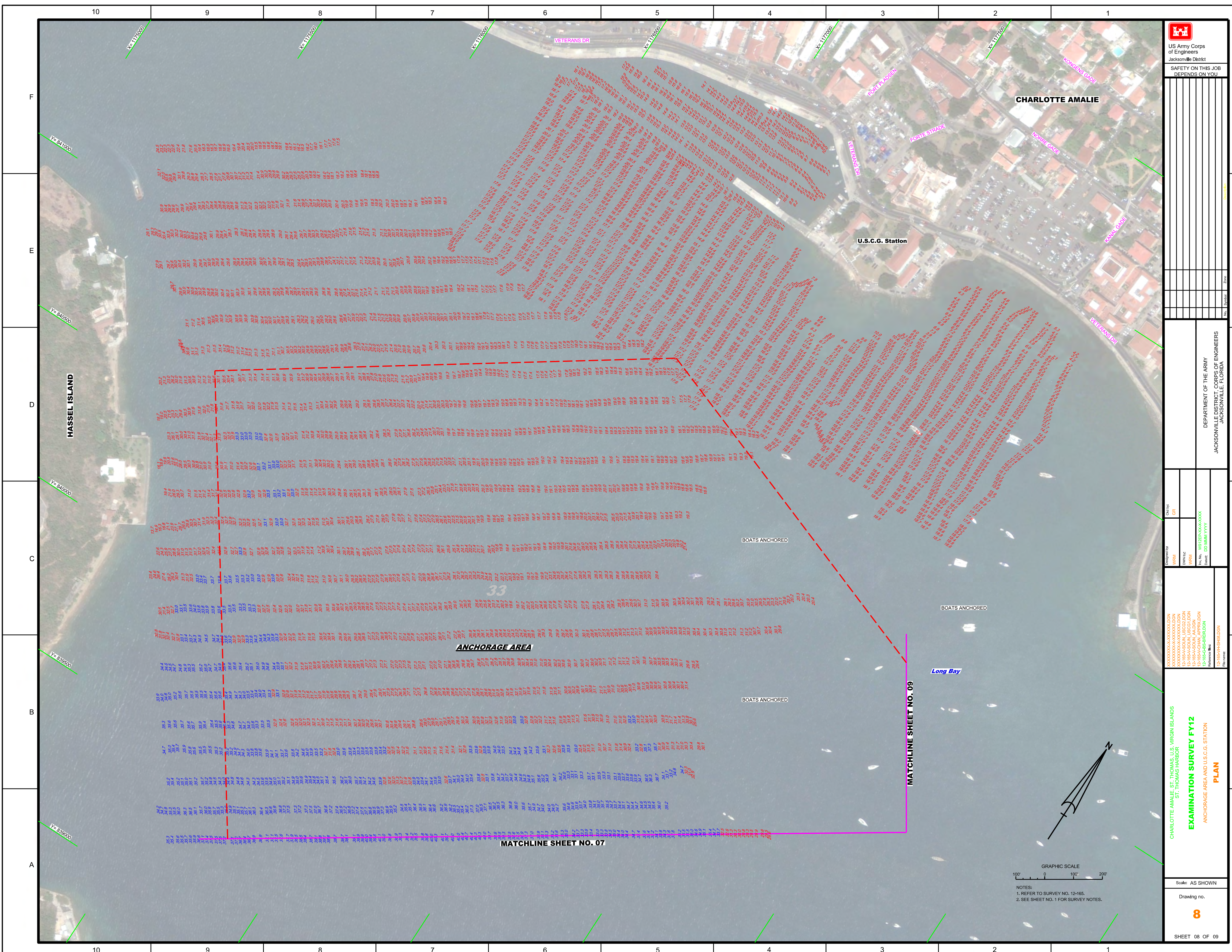


NOTES:
1. REFER TO SURVEY NO. 12-165.
2. SEE SHEET NO. 1 FOR SURVEY NOTES.

Designed by: WRM
Checked by: GRL
Drawn by: WRM
In Charge: WRM
Project No.: 12-165-CH-AN-APP-03
Contract: DDMMYYYY

CHARLOTTE AMALIE, ST. THOMAS, U.S. VIRGIN ISLANDS
ST. THOMAS HARBOR
ENTRANCE CHANNEL
EXAMINATION SURVEY FY12
PLAN

DEPARTMENT OF THE ARMY
JACKSONVILLE DISTRICT, CORPS OF ENGINEERS
JACKSONVILLE, FLORIDA



DEPARTMENT OF THE ARMY
JACKSONVILLE DISTRICT, CORPS OF ENGINEERS
JACKSONVILLE, FLORIDA

XXXXXXXXXXXXXXXXXXXX
XXXXXXXXXXXXXXXXXXXX
XXXXXXXXXXXXXXXXXXXX
12-165A-SOUL_LISC02.DGN
12-165A-SOUL_LISC01.DGN
12-165A-CHAN_APPROX.DGN
12-165A-BS-BIRI02.DGN
Reference files:
12-165A-HSH08.DGN
File name:

CHARLOTTE AMALIE, ST. THOMAS, U.S. VIRGIN ISLANDS
ST. THOMAS HARBOR
EXAMINATION SURVEY FY12
ANCHORAGE AREA AND U.S.C.G. STATION
PLAN
Scale: AS SHOWN
Drawing no.
8
SHEET 08 OF 09

GRAPHIC SCALE
Scale: AS SHOWN
NOTES:
1. REFER TO SURVEY NO. 12-165.
2. SEE SHEET NO. 1 FOR SURVEY NOTES.

