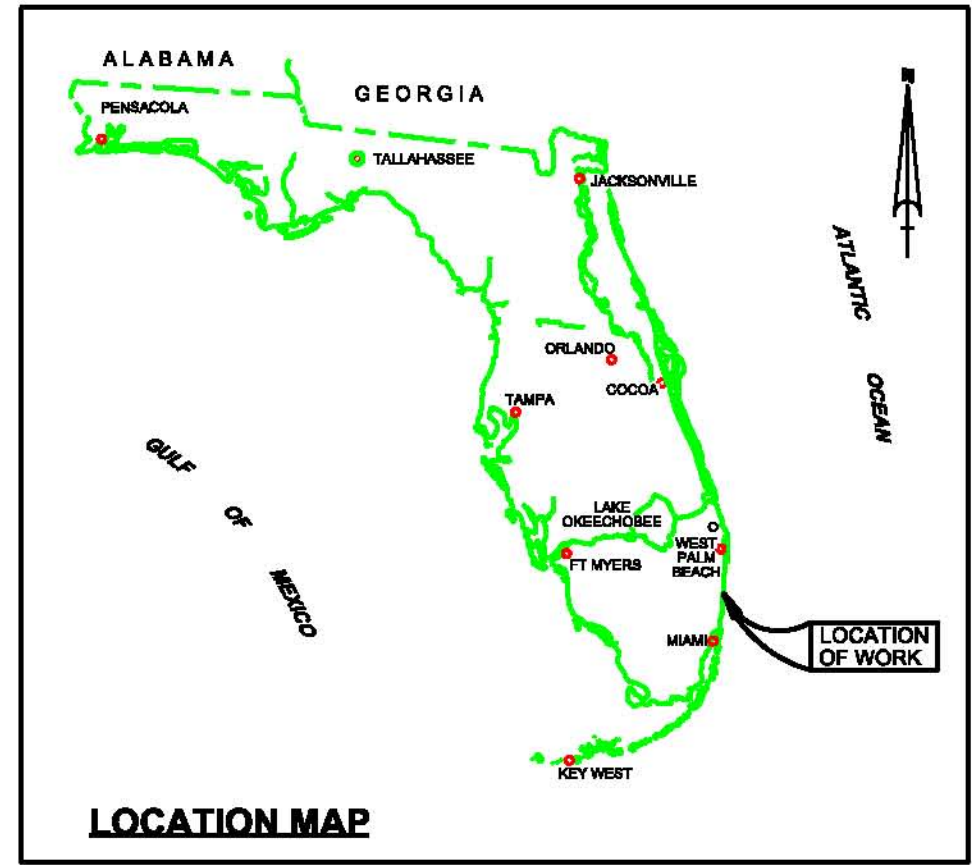
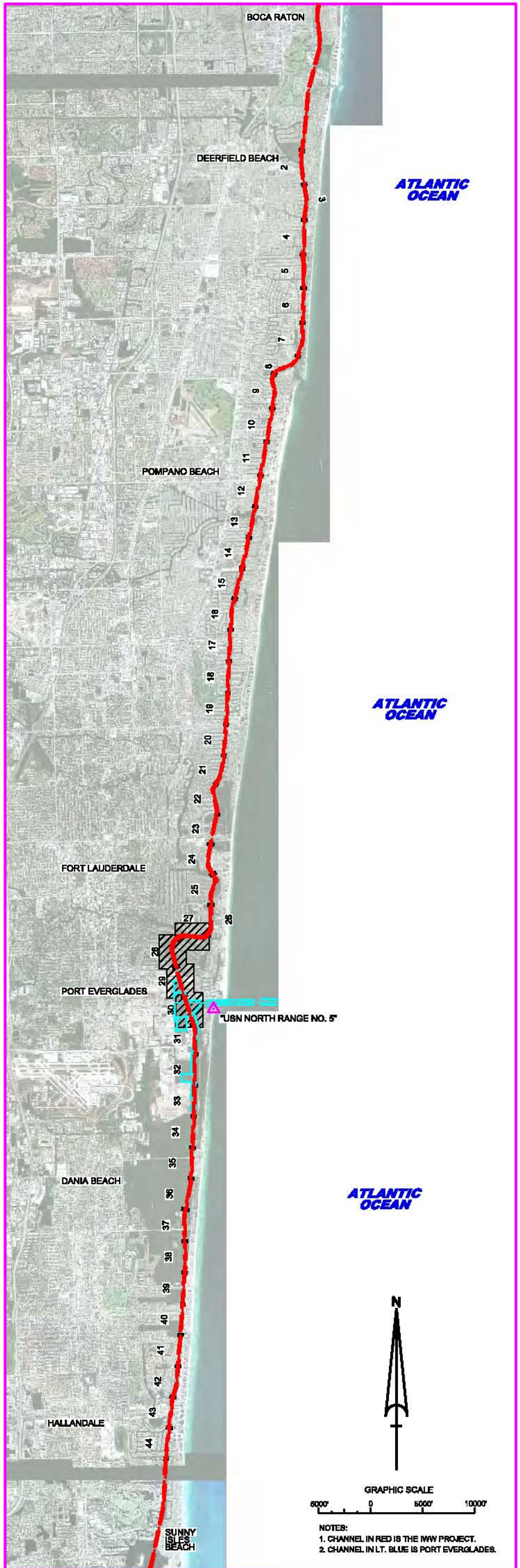


IWW - JACKSONVILLE TO MIAMI, FL BROWARD COUNTY CUTS BW-49 THRU BW-50 EXAMINATION SURVEY FY12 10-FOOT PROJECT



LEGEND	
•BM	BENCHMARK
⚓	LIGHTED BEACON
◻	GREEN DAYBEACON
◼	RED DAYBEACON
⊕	RED LIGHTED BUOY
⊖	GREEN LIGHTED BUOY
⊙	CAN BUOY
⊗	NUN BUOY
⊘	TIDE STAFF
8	PROJECT DEPTH

- SURVEY NOTES**
- REFER TO SURVEY NO. 12-121.
 - TIDAL REDUCTIONS WERE OBTAINED UTILIZING A REAL-TIME KINEMATIC (RTK) GPS AND REFERENCED TO MLLW UTILIZING A HYPACK KINEMATIC TIDE DATUM (KTD) MODEL NAMED: "PALMBEACH-BROWARD-02JULY2010.KTD".
 - ALL ELEVATIONS ARE BELOW THE CHART DATUM UNLESS PRECEDED BY A (+) SIGN.
 - PLANE COORDINATES ARE BASED ON THE TRANSVERSE MERCATOR PROJECTION FOR THE EAST ZONE OF FLORIDA AND REFERENCED TO NORTH AMERICAN DATUM OF 1983 (NAD83).
 - ALL AZIMUTHS ARE GRID; RECKONED CLOCKWISE FROM SOUTH.
 - ALL STATIONING REFERS TO THE CENTERLINE OF THE CHANNEL.
 - THIS SURVEY WAS PERFORMED USING REAL-TIME KINEMATIC GPS POSITIONING WITH THE FOLLOWING REFERENCE BASE LOCATION:
REFERENCE BASE LOCATED AT "USN NORTH RANGE NO. 6" (OPUS PID: BBC827)
TIDE STAFF WAS SET INSIDE OF SLIP 2 OF PORT EVERGLADES FROM "872 2861 NO. 4 (PID: AD2443)
 - DEPTHS DEPICTED BY THIS SURVEY ARE REFERENCED TO MLLW, TIDAL EPOCH 1983-2001 AS REPORTED BY THE NATIONAL OCEANIC AND ATMOSPHERIC ADMINISTRATION (NOAA). NOAA'S VDATUM MODEL WAS USED AND CALIBRATED TO THE PUBLISHED MLLW HEIGHTS OF THE BENCHMARKS ASSOCIATED WITH THE TIDE GAUGE SITES SPECIFIED BELOW:
NOAA TIDAL STATION 872-2861, PORT EVERGLADES, LAKE MABEL, FLORIDA
VERTICAL MEASUREMENTS WERE MADE USING AN EDGETECH 4800 INTERFEROMETRIC SYSTEM OPERATING AT 230 KHZ (HIGH FREQUENCY). ALL SOUNDINGS SHOWN ARE IN HIGH FREQUENCY.
 - VESEL: 88-32 DATE OF SURVEY: 06 JUN 2012 CUT: BW-49, BW-50
 - AIDS TO NAVIGATION WERE LOCATED DURING THIS SURVEY.
 - THE INFORMATION DEPICTED ON THIS MAP REPRESENTS THE RESULTS OF SURVEYS MADE ON THE DATES INDICATED ABOVE AND CAN ONLY BE CONSIDERED AS INDICATING THE GENERAL CONDITIONS AT THAT TIME. THIS CHART IS SOLELY FOR THE DISTRIBUTION OF AVAILABLE DEPTHS AT THE TIME OF THE SURVEY AND IS NOT TO BE USED FOR NAVIGATION.
 - SURVEY ACCURACY PERFORMANCE STANDARDS, QUALITY CONTROL, AND QUALITY ASSURANCE REQUIREMENTS WERE FOLLOWED DURING THIS SURVEY IN ACCORDANCE WITH USACE EM 1110-2-1003, HYDROGRAPHIC SURVEYING, 1 JAN 02.

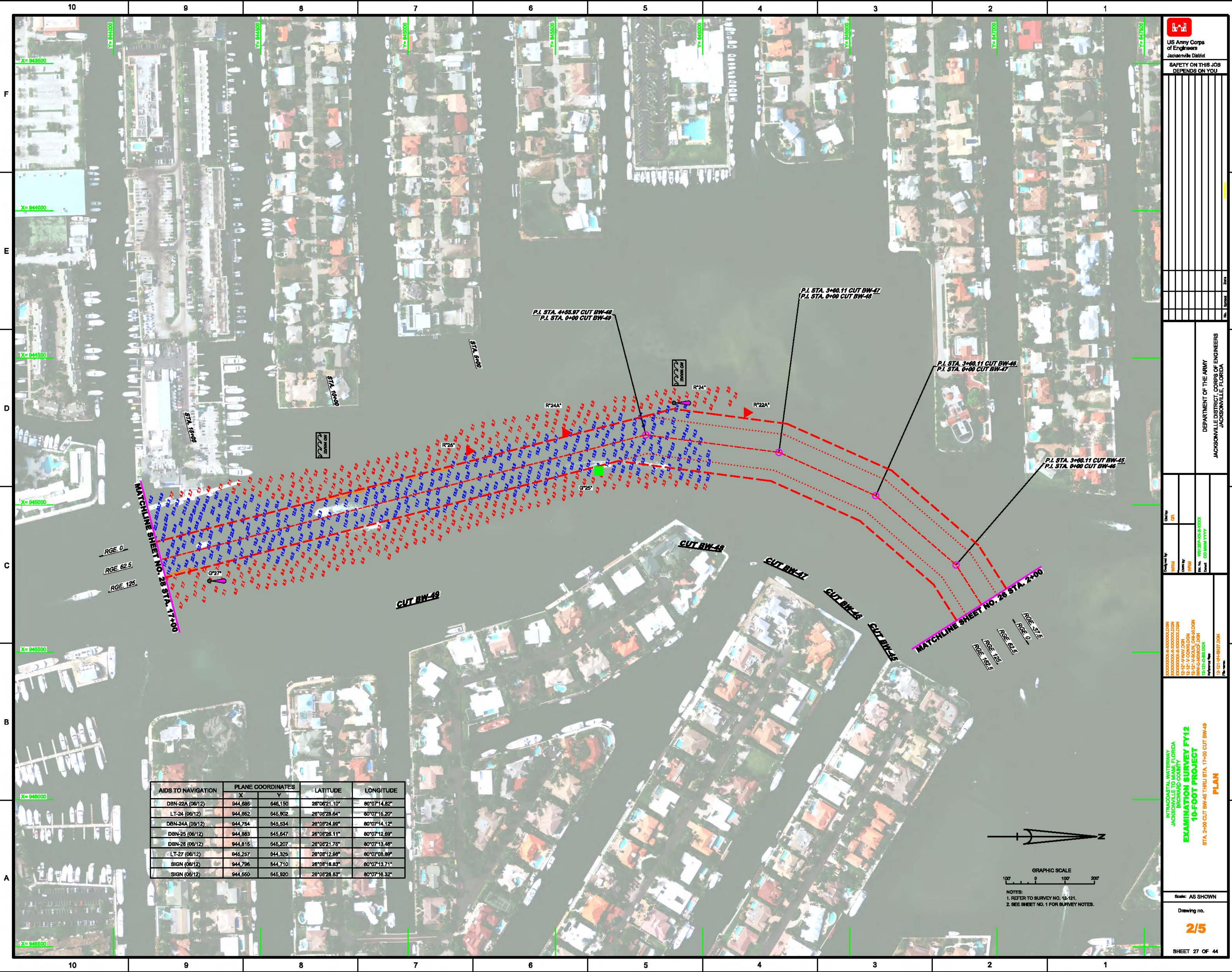
US Army Corps of Engineers
Jacksonville District
SAFETY ON THIS JOB
DEPENDS ON YOU

Checked by:	GR
Designed by:	WFM
Drawn by:	WFM
File No.:	WATERWAY-SCALE
Check:	DD MMW YYY

DEPARTMENT OF THE ARMY
JACKSONVILLE DISTRICT, CORPS OF ENGINEERS
JACKSONVILLE, FLORIDA

INTRACOASTAL WATERWAY
JACKSONVILLE TO MIAMI, FLORIDA
BROWARD COUNTY
EXAMINATION SURVEY FY12
10-FOOT PROJECT
INDEX, LOCATION AND VICINITY
MAP


Scale: AS SHOWN
Drawing no.
1/5
SHEET 01 OF 44



AIDS TO NAVIGATION	PLANE COORDINATES		LATITUDE	LONGITUDE
	X	Y		
DBN-22A (08/12)	944,685	646,150	26°06'21.10"	80°07'14.82"
LT-24 (08/12)	944,862	646,902	26°06'28.84"	80°07'16.20"
DBN-34A (08/12)	944,754	645,534	26°06'24.99"	80°07'14.12"
DBN-25 (08/12)	944,883	645,647	26°06'26.11"	80°07'12.69"
DBN-26 (08/12)	944,815	645,207	26°06'21.76"	80°07'13.46"
LT-27 (08/12)	945,257	644,325	26°06'12.98"	80°07'08.89"
SIGN (08/12)	944,796	644,710	26°06'18.83"	80°07'13.71"
SIGN (08/12)	944,550	645,920	26°06'28.83"	80°07'16.32"



NOTES:
 1. REFER TO SURVEY NO. 12-121.
 2. SEE SHEET NO. 1 FOR SURVEY NOTES.



US Army Corps of Engineers
 Jacksonville District
SAFETY ON THIS JOB DEPENDS ON YOU

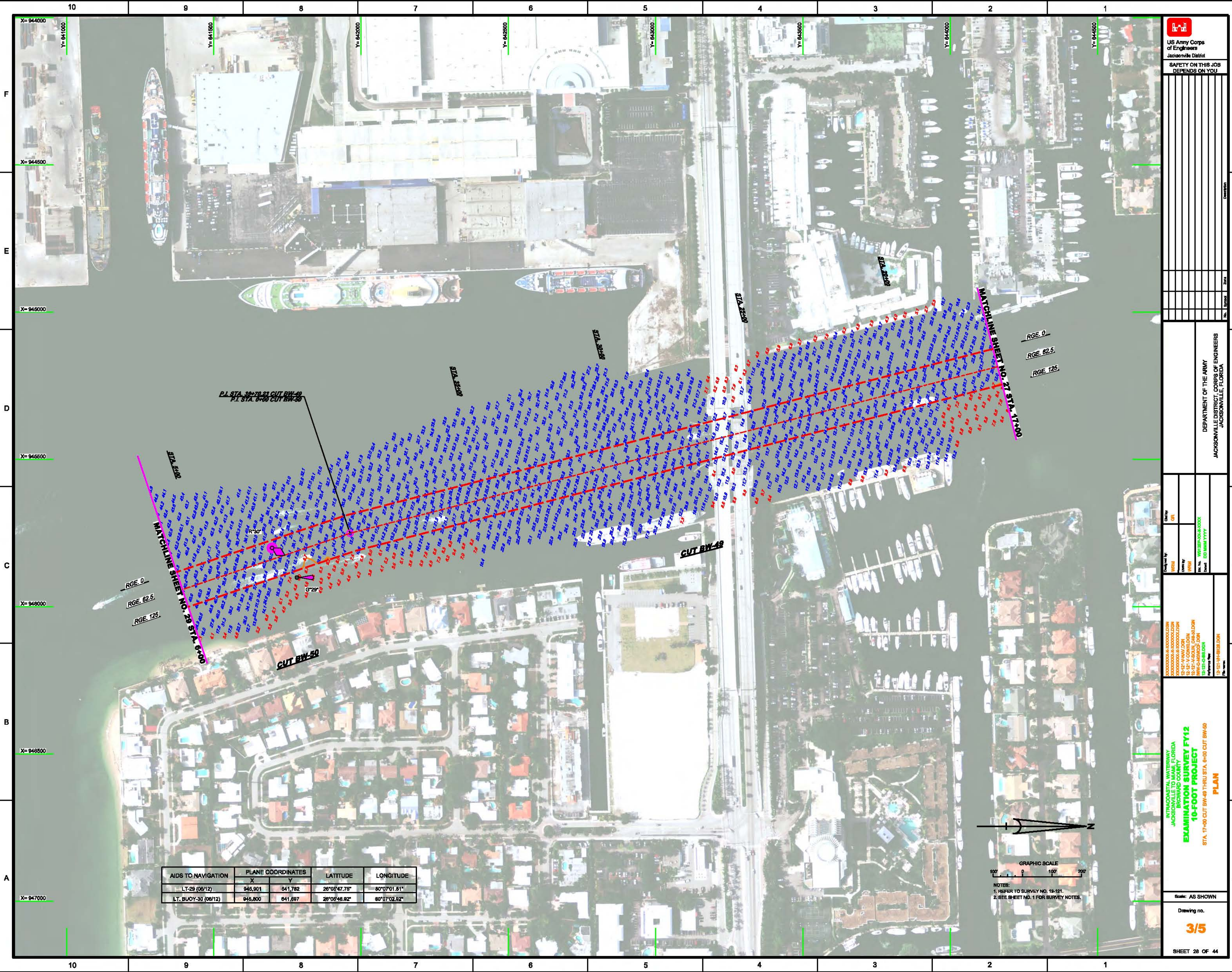
DEPARTMENT OF THE ARMY
 JACKSONVILLE DISTRICT, CORPS OF ENGINEERS
 JACKSONVILLE, FLORIDA

Checked by: GFL
 Drawn by: WPM
 Date: 02/11/14
 Scale: AS SHOWN

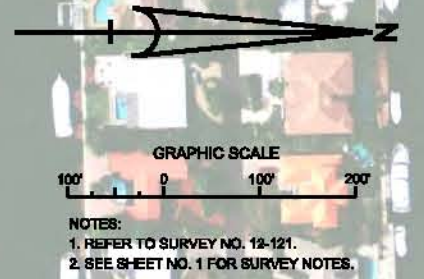
**EXAMINATION SURVEY FY12
 10-FOOT PROJECT**
 STA. 2+00 CUT BW-45 THRU STA. 11+00 CUT BW-49
PLAN


Drawing no.
2/5

SHEET 27 OF 44



AIDS TO NAVIGATION	PLANE COORDINATES		LATITUDE	LONGITUDE
	X	Y		
LT-29 (08/12)	945,901	641,782	26°08'47.76"	80°07'01.81"
LT. BUOY-30 (08/12)	945,800	641,897	26°08'48.62"	80°07'02.92"





US Army Corps of Engineers
Jacksonville District

**SAFETY ON THIS JOB
DEPENDS ON YOU**

DEPARTMENT OF THE ARMY
JACKSONVILLE DISTRICT, CORPS OF ENGINEERS
JACKSONVILLE, FLORIDA

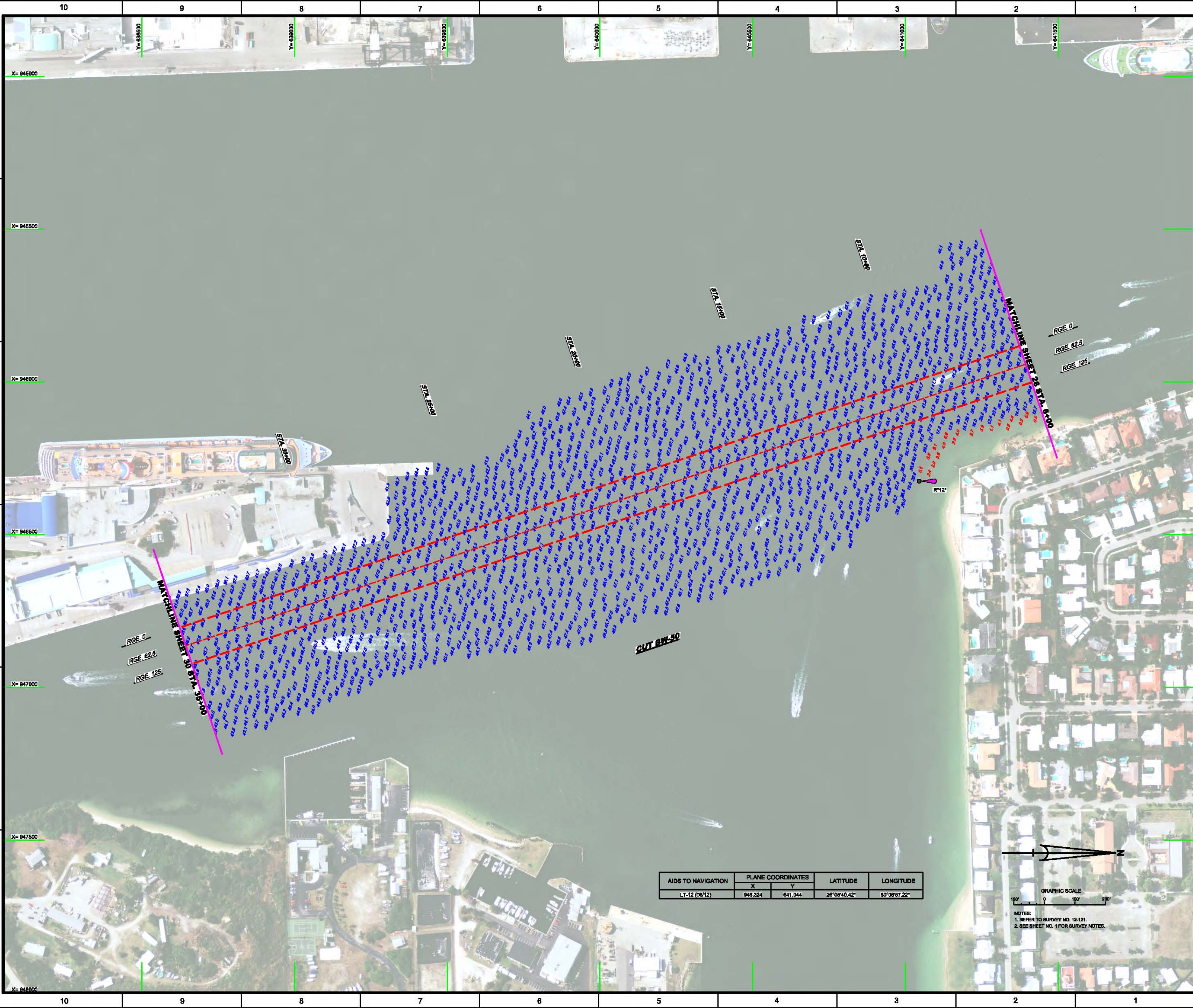
Checked by: GFL
Drawn by: WPM
In Charge: WPM
Scale: AS SHOWN

INTRACOASTAL WATERWAY
JACKSONVILLE TO MIAMI, FLORIDA
BROWARD COUNTY
EXAMINATION SURVEY FY12
10-FOOT PROJECT
PLAN
STA. 17+00 CUT BW-49 THRU STA. 6+00 CUT BW-50

Project No. 12-121-0-00000000
Drawing No. 3/5
Scale: AS SHOWN

SHEET 28 OF 44


Scale: AS SHOWN
Drawing no. **3/5**



AIDS TO NAVIGATION	PLANE COORDINATES		LATITUDE	LONGITUDE
	X	Y		
LT-12 (08/12)	948,324	641,044	26°05'40.42"	80°08'57.22"



NOTES:
 1. REFER TO SURVEY NO. 12-121.
 2. SEE SHEET NO. 1 FOR SURVEY NOTES.



US Army Corps of Engineers
Jacksonville District

**SAFETY ON THIS JOB
DEPENDS ON YOU**

Checked by: **GR**

Drawn by: **WPM**

Field No.: **10125-02-0000**

Reference No.: **DD MMW YYY**

DEPARTMENT OF THE ARMY
JACKSONVILLE DISTRICT, CORPS OF ENGINEERS
JACKSONVILLE, FLORIDA

10125-02-0000-010M

10125-02-0000-020M

10125-02-0000-030M

10125-02-0000-040M

10125-02-0000-050M

10125-02-0000-060M

10125-02-0000-070M

10125-02-0000-080M

10125-02-0000-090M

10125-02-0000-100M

**INTRACOASTAL WATERWAY
JACKSONVILLE TO MIAMI, FLORIDA
BROWARD COUNTY
EXAMINATION SURVEY FY12
10-FOOT PROJECT
PLAN**

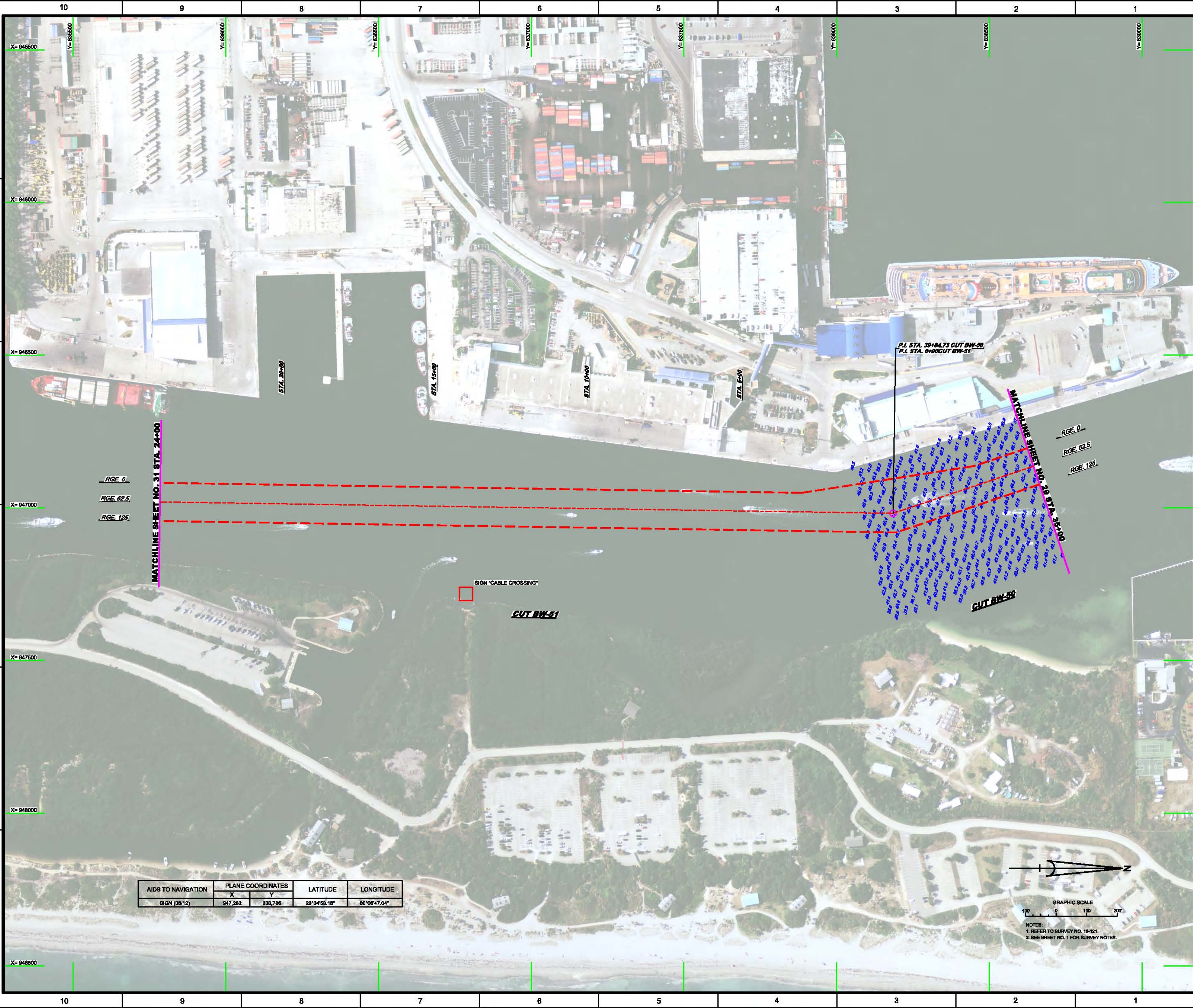
STA 6+00 THRU STA 35+00 CUT BW-50

Scale: AS SHOWN

Drawing no.

4/5

SHEET 28 OF 44



RGE. 0
RGE. 62.5
RGE. 125

MATCHLINE SHEET NO. 31 STA. 24+00

P.I. STA. 39+04.73 CUT BW-50
P.I. STA. 0+00 CUT BW-51

RGE. 0
RGE. 62.5
RGE. 125

CUT BW-50

CUT BW-51

SIGN "CABLE CROSSING"

AIDS TO NAVIGATION	PLANE COORDINATES		LATITUDE	LONGITUDE
	X	Y		
SIGN (08/12)	947,282	638,786	28°04'58.18"	80°08'47.04"



NOTES:
1. REFER TO SURVEY NO. 12-121.
2. SEE SHEET NO. 1 FOR SURVEY NOTES.

US Army Corps of Engineers
Jacksonville District

SAFETY ON THIS JOB DEPENDS ON YOU

DEPARTMENT OF THE ARMY
JACKSONVILLE DISTRICT, CORPS OF ENGINEERS
JACKSONVILLE, FLORIDA

**INTRACOASTAL WATERWAY
JACKSONVILLE TO MIAMI, FLORIDA
BROWARD COUNTY
EXAMINATION SURVEY FY12
10-FOOT PROJECT
PLAN**

STA. 36+00 CUT BW-50 THRU STA. 24+00 CUT BW-51

Scale: AS SHOWN
Drawing no.
5/5

SHEET 30 OF 44