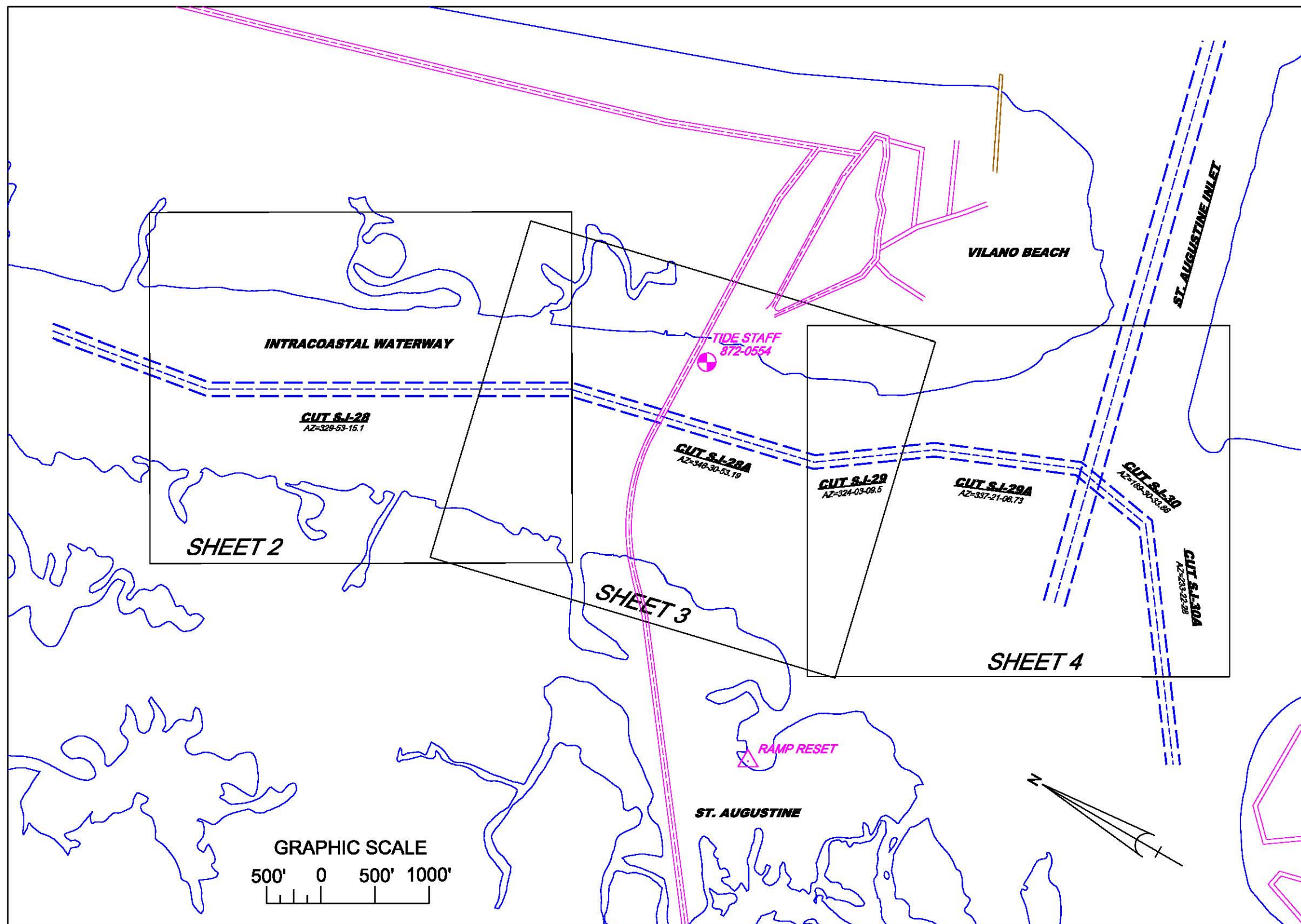


INTRACOASTAL WATERWAY ST. AUGUSTINE, FL EXAMINATION CONDITION SURVEY, FY12



SURVEY NOTES:

1. REFER TO SURVEY NO. 12-118
 2. ELEVATIONS ARE IN FEET AND TENTHS AND REFER TO MEAN LOWER LOW WATER TIDAL DATUM.
 3. DEPTHS DEPICTED BY THIS SURVEY ARE REFERENCED TO MLLW, TIDAL EPOCH 1983-2001, AS REPORTED BY THE NATIONAL OCEANIC AND ATMOSPHERIC ADMINISTRATION (NOAA). NOAA'S VDATUM MODEL WAS USED AND CALIBRATED TO THE PUBLISHED MLLW HEIGHTS OF THE BENCH MARKS ASSOCIATED WITH THE TIDE GAGE SITE BELOW:

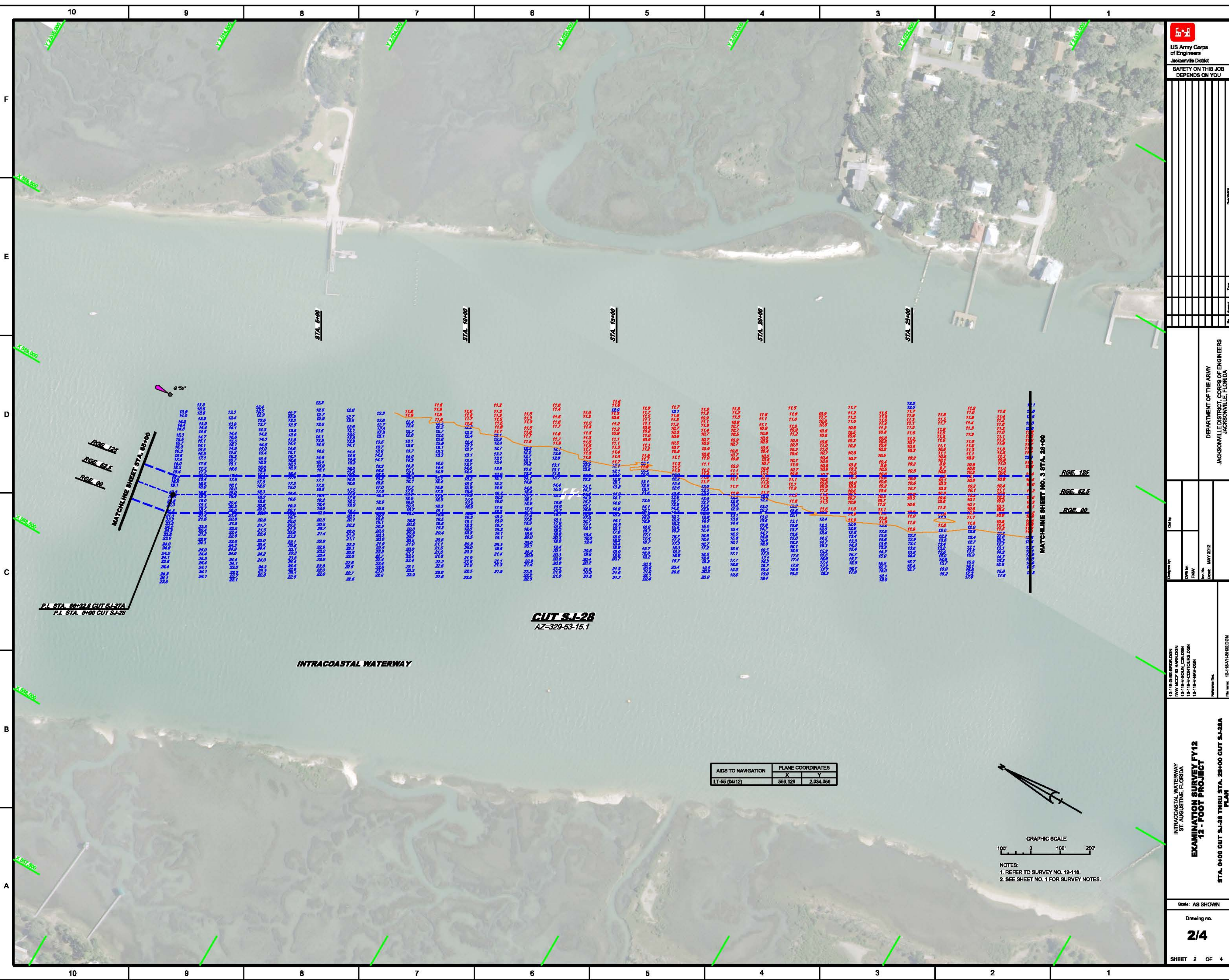
872-0554, VILANO BEACH (ICWW)
 4. ALL ELEVATIONS ARE BELOW THE CHART DATUM UNLESS PRECEDED BY A (+) SIGN.
 5. PLANE COORDINATES ARE BASED ON THE TRANSVERSE MERCATOR PROJECTION FOR THE EAST ZONE OF FLORIDA AND REFERENCED TO THE NORTH AMERICAN DATUM OF 1983 (NAD 83).
 6. THIS SURVEY WAS PERFORMED USING REAL-TIME KINEMATIC GPS POSITIONING WITH THE FOLLOWING REFERENCE BASE LOCATION:

REFERENCE BASE LOCATED AT "RAMP RESET, 2010" (PID# BBCB11)

TIDE STAFF LOCATED AT "872 0554B" (NGS PID# DL5712)
 7. VERTICAL MEASUREMENTS WERE MADE USING A ROSS MODEL 835 SMARTSOUNDER WITH A 24/200KHZ TRANSDUCER. ALL DEPTHS SHOWN ARE HIGH FREQUENCY.
- | SURVEY VESSEL | DATE OF SURVEY | CUTS |
|---------------|----------------|-----------------------|
| WB-32 | 27 APR 2012 | IWW, SJ-28 THRU SJ-30 |
| WB-32 | 21 MAY 2012 | IWW, SJ-30A |
8. THE INFORMATION DEPICTED ON THIS MAP REPRESENTS THE RESULTS OF SURVEYS MADE ON THE DATES INDICATED ABOVE AND CAN ONLY BE CONSIDERED AS INDICATING THE GENERAL CONDITIONS AT THAT TIME. THIS CHART IS SOLELY FOR THE DISTRIBUTION OF AVAILABLE DEPTHS AT THE TIME OF SURVEY.
 9. SURVEY ACCURACY STANDARDS, QUALITY CONTROL, AND QUALITY ASSURANCE REQUIREMENTS WERE FOLLOWED DURING THIS SURVEY IN ACCORDANCE WITH USACE EM 1110-2-1003, HYDROGRAPHIC SURVEYING, 1 JAN 02.

US Army Corps of Engineers
Jacksonville District
**SAFETY ON THIS JOB
DEPENDS ON YOU**

DEPARTMENT OF THE ARMY JACKSONVILLE DISTRICT, CORPS OF ENGINEERS JACKSONVILLE, FLORIDA	12-118-G-BS-BROK.DGN IWW.MCF:RB.HARLDON ST.AUG.IW-MCF:HHN.DGN ST.AUG.TOP.OBL.DGN IWW.PLP.DGN Reference files: File name: 12-118-IW-BH-DGN
INTRACOASTAL WATERWAY ST. AUGUSTINE, FLORIDA EXAMINATION SURVEY FY12 12 - FOOT PROJECT	STA. 0+00 CUT SJ-28 THRU STA. 10+00 CUT SJ-30A Scale: AS SHOWN Drawing no. 1 SHEET 1 OF 4



US Army Corps of Engineers
Jacksonville District
SAFETY ON THIS JOB
DEPENDS ON YOU

DEPARTMENT OF THE ARMY
JACKSONVILLE DISTRICT, CORPS OF ENGINEERS
JACKSONVILLE, FLORIDA

Drawn by: [blank]
Checked by: [blank]
Date: MAY 2012

12-11A-00-BB-BR01.DGN
12-11A-00-BB-01.DGN
12-11A-00-BB-02.DGN
12-11A-00-BB-03.DGN

INTRACOASTAL WATERWAY
ST. AUGUSTINE, FLORIDA
EXAMINATION SURVEY FY12
12 - FOOT PROJECT
STA. 0+00 CUT S-I-28 THRU STA. 29+00 CUT S-I-28A
PLAN

Scale: AS SHOWN
Drawing no.
2/4
SHEET 2 OF 4

AIDS TO NAVIGATION	PLANE COORDINATES	
	X	Y
LT-65 (04/12)	569,128	2,034,066



NOTES:
1. REFER TO SURVEY NO. 12-118.
2. SEE SHEET NO. 1 FOR SURVEY NOTES.

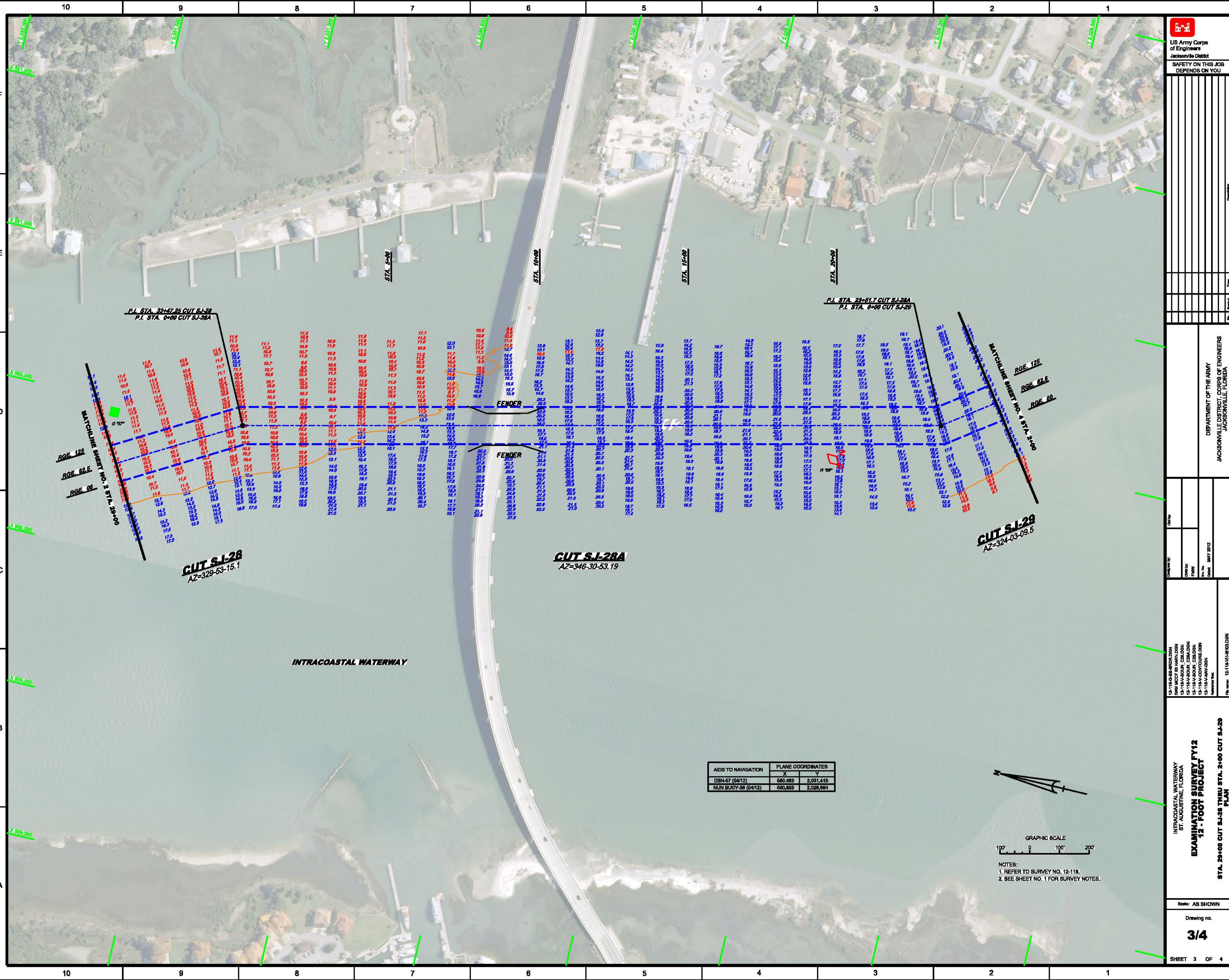
CUT S-I-28
AZ=329-63-15.1

INTRACOASTAL WATERWAY

P.I. STA. 00+32.6 CUT S-I-27A
P.I. STA. 0+00 CUT S-I-28

MATCHLINE SHEET NO. 3 STA. 29+00
RGE 125
RGE 62.5
RGE 00

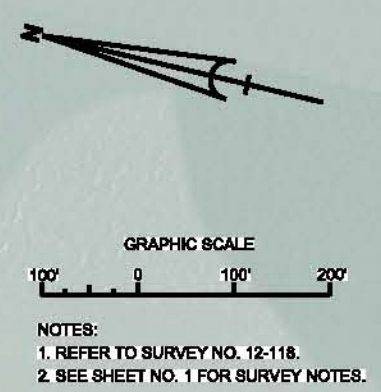
MATCHLINE SHEET STA. 0+00
RGE 125
RGE 62.5
RGE 00

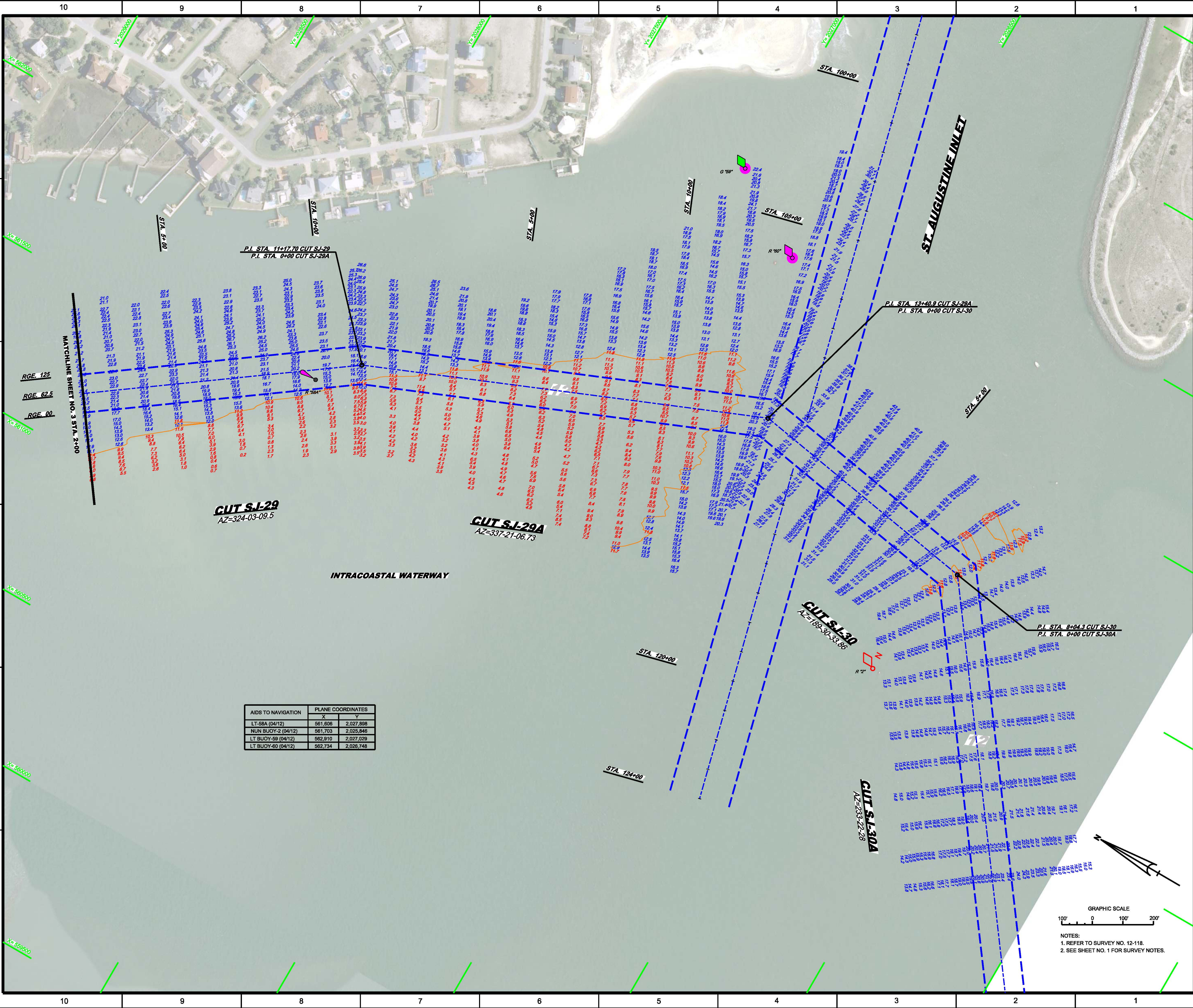


10 9 8 7 6 5 4 3 2 1
F
E
D
C
B
A


DEPARTMENT OF THE ARMY JACKSONVILLE DISTRICT, CORPS OF ENGINEERS JACKSONVILLE, FLORIDA			
Checked by:	Drawn by:	Scale:	Date:
	FWM	AS SHOWN	MAY 2012
15-114-01-BR-01-DON 15-114-01-BR-02-DON 15-114-01-BR-03-DON 15-114-01-BR-04-DON 15-114-01-BR-05-DON 15-114-01-BR-06-DON 15-114-01-BR-07-DON 15-114-01-BR-08-DON 15-114-01-BR-09-DON 15-114-01-BR-10-DON 15-114-01-BR-11-DON 15-114-01-BR-12-DON 15-114-01-BR-13-DON 15-114-01-BR-14-DON 15-114-01-BR-15-DON 15-114-01-BR-16-DON 15-114-01-BR-17-DON 15-114-01-BR-18-DON 15-114-01-BR-19-DON 15-114-01-BR-20-DON 15-114-01-BR-21-DON 15-114-01-BR-22-DON 15-114-01-BR-23-DON 15-114-01-BR-24-DON 15-114-01-BR-25-DON 15-114-01-BR-26-DON 15-114-01-BR-27-DON 15-114-01-BR-28-DON 15-114-01-BR-29-DON 15-114-01-BR-30-DON 15-114-01-BR-31-DON 15-114-01-BR-32-DON 15-114-01-BR-33-DON 15-114-01-BR-34-DON 15-114-01-BR-35-DON 15-114-01-BR-36-DON 15-114-01-BR-37-DON 15-114-01-BR-38-DON 15-114-01-BR-39-DON 15-114-01-BR-40-DON 15-114-01-BR-41-DON 15-114-01-BR-42-DON 15-114-01-BR-43-DON 15-114-01-BR-44-DON 15-114-01-BR-45-DON 15-114-01-BR-46-DON 15-114-01-BR-47-DON 15-114-01-BR-48-DON 15-114-01-BR-49-DON 15-114-01-BR-50-DON 15-114-01-BR-51-DON 15-114-01-BR-52-DON 15-114-01-BR-53-DON 15-114-01-BR-54-DON 15-114-01-BR-55-DON 15-114-01-BR-56-DON 15-114-01-BR-57-DON 15-114-01-BR-58-DON 15-114-01-BR-59-DON 15-114-01-BR-60-DON 15-114-01-BR-61-DON 15-114-01-BR-62-DON 15-114-01-BR-63-DON 15-114-01-BR-64-DON 15-114-01-BR-65-DON 15-114-01-BR-66-DON 15-114-01-BR-67-DON 15-114-01-BR-68-DON 15-114-01-BR-69-DON 15-114-01-BR-70-DON 15-114-01-BR-71-DON 15-114-01-BR-72-DON 15-114-01-BR-73-DON 15-114-01-BR-74-DON 15-114-01-BR-75-DON 15-114-01-BR-76-DON 15-114-01-BR-77-DON 15-114-01-BR-78-DON 15-114-01-BR-79-DON 15-114-01-BR-80-DON 15-114-01-BR-81-DON 15-114-01-BR-82-DON 15-114-01-BR-83-DON 15-114-01-BR-84-DON 15-114-01-BR-85-DON 15-114-01-BR-86-DON 15-114-01-BR-87-DON 15-114-01-BR-88-DON 15-114-01-BR-89-DON 15-114-01-BR-90-DON 15-114-01-BR-91-DON 15-114-01-BR-92-DON 15-114-01-BR-93-DON 15-114-01-BR-94-DON 15-114-01-BR-95-DON 15-114-01-BR-96-DON 15-114-01-BR-97-DON 15-114-01-BR-98-DON 15-114-01-BR-99-DON 15-114-01-BR-100-DON			
INTRACOASTAL WATERWAY ST. AUGUSTINE, FLORIDA EXAMINATION SURVEY FY12 12-FOOT PROJECT STA. 29+00 CUT S.I-28 THRU STA. 2+00 CUT S.I-29 PLAN			
Scale: AS SHOWN Drawing no. 3/4 SHEET 3 OF 4			

AIDS TO NAVIGATION	PLANE COORDINATES	
	X	Y
DBN-67 (04/12)	680,483	2,031,413
NUN BUCY-58 (04/12)	680,855	2,028,994





AIDS TO NAVIGATION	PLANE COORDINATES	
	X	Y
LT-58A (04/12)	561,606	2,027,898
NUN BUOY-2 (04/12)	561,703	2,025,846
LT BUOY-59 (04/12)	562,910	2,027,029
LT BUOY-60 (04/12)	562,734	2,028,748



US Army Corps of Engineers
Jacksonville District
SAFETY ON THIS JOB
DEPENDS ON YOU

DEPARTMENT OF THE ARMY
JACKSONVILLE DISTRICT, CORPS OF ENGINEERS
JACKSONVILLE, FLORIDA

Checked by: 12-118-VH-SH4/DGN
Designed by: 12-118-VH-SH4/DGN
Drawn by: 12-118-VH-SH4/DGN
File No.: 12-118-VH-SH4/DGN
Date: MAY 2012

INTRACOASTAL WATERWAY
ST. AUGUSTINE, FLORIDA
**EXAMINATION SURVEY FY12
12-FOOT PROJECT**
PLAN
STA. 2+00 CUT S.J. 29 THRU STA. 10+00 CUT S.J. 30A

Scale: AS SHOWN
Drawing no.
4/4

SHEET 4 OF 4

GRAPHIC SCALE
100' 0 100' 200'

NOTES:
1. REFER TO SURVEY NO. 12-118.
2. SEE SHEET NO. 1 FOR SURVEY NOTES.