

US Army Corps of Engineers
 Jacksonville District
 SAFETY ON THE JOB
 CONSIDER US YOU

DEPARTMENT OF THE ARMY
 JACKSONVILLE DISTRICT, CORPS OF ENGINEERS
 JACKSONVILLE, FLORIDA

DATE: 2012
 DRAWN BY: [Name]
 CHECKED BY: [Name]
 SCALE: AS SHOWN

DRAWING NO. 1
 SHEET 1 OF 6

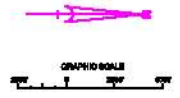
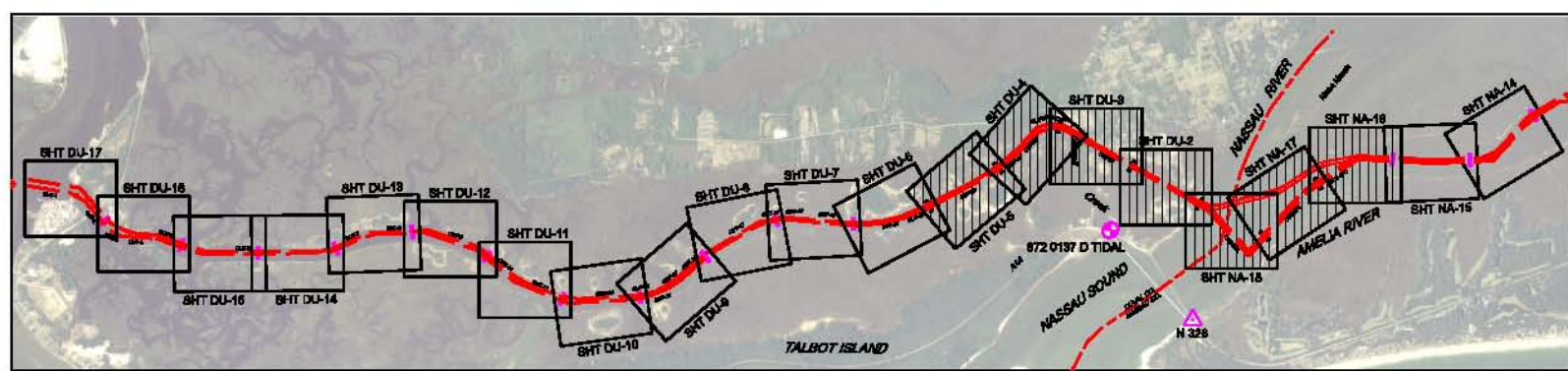
ATLANTIC INTRACOASTAL WATERWAY FERNANDINA TO ST. JOHNS RIVER, FLORIDA EXAMINATION SURVEY



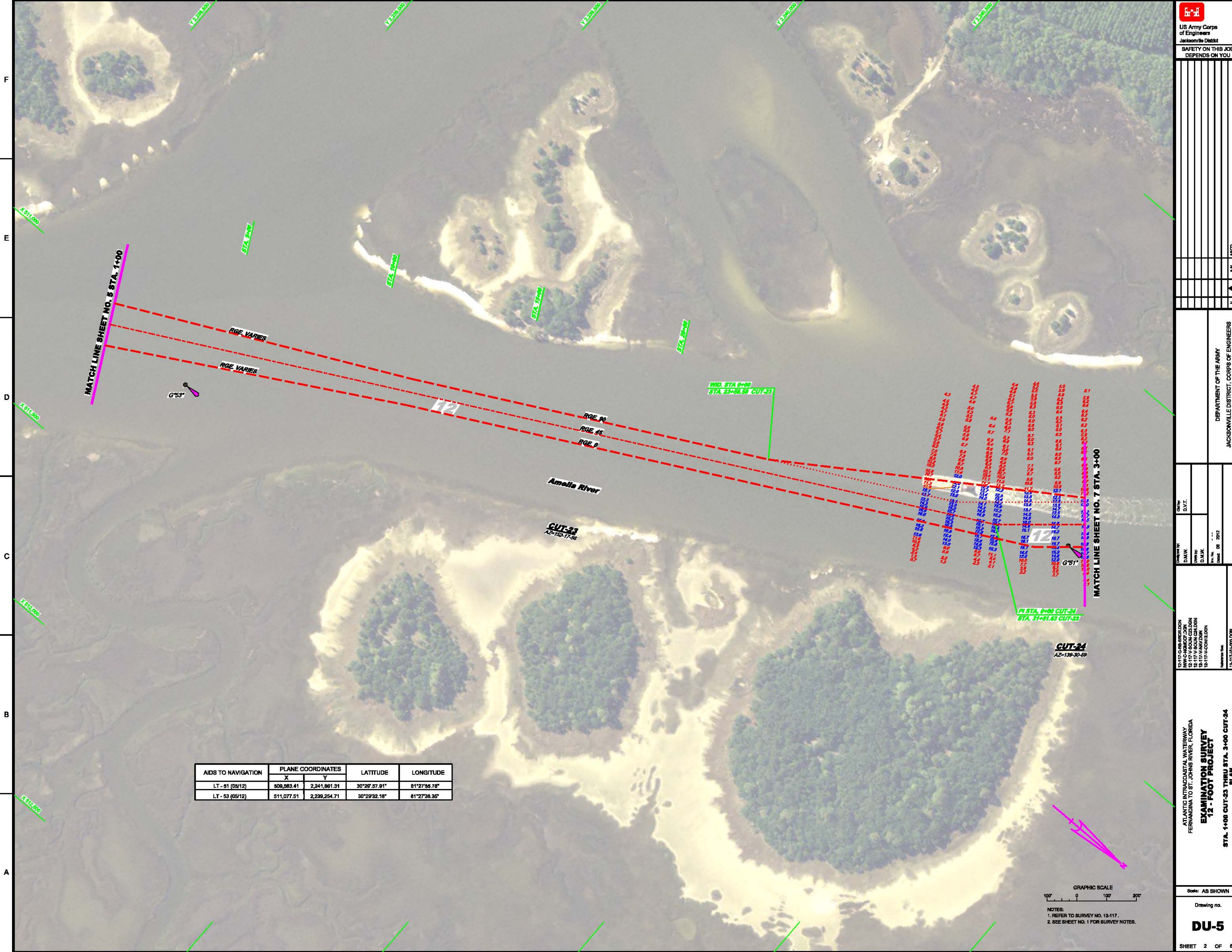
MAP SHEET NOTES:

1. REFER TO SURVEY NO. 12-117.
 2. DEPTHS DEPICTED BY THIS SURVEY ARE REFERENCED TO MLLW, TIDAL EPOCH 1983-2001, AS REPORTED BY THE NATIONAL OCEANIC AND ATMOSPHERIC ADMINISTRATION (NOAA). NOAA'S VDATUM MODEL WAS USED AND CALIBRATED TO THE COMPUTED MLLW HEIGHT OF THE BENCH MARK ASSOCIATED WITH THE TIDE GAGE SITE SPECIFIED BELOW:
NOAA TIDAL STATION 872-0137 FOR ENTIRE PROJECT.
 3. TIDAL REDUCTIONS WERE OBTAINED USING REAL-TIME KINEMATIC GPS UTILIZING A HYPACK KINEMATIC TIDAL DATUM (KTD) MODEL. FILE NAME CAMDENGA-NASSAU-DUVAL-STJOHNS-FLAGLER 01FEB2011.KTD.
 4. ALL ELEVATIONS ARE BELOW THE CHART DATUM UNLESS PRECEDED BY A (+) SIGN.
 5. PLANE COORDINATES ARE BASED ON THE TRANSVERSE MERCATOR PROJECTION FOR THE EAST ZONE OF FLORIDA AND REFERENCED TO THE NORTH AMERICAN DATUM OF 1983 (NAD 83).
 6. THIS SURVEY WAS PERFORMED USING REAL-TIME KINEMATIC GPS POSITIONING WITH THE FOLLOWING REFERENCE BASE LOCATION:
REFERENCE BASE LOCATED AT "N-326" (PID BC0187)
TIDE STAFF LOCATED FROM "872 0137 D TIDAL" (PID BC1374)
 7. VERTICAL MEASUREMENTS WERE MADE USING A ROSS SMARTSOUNDER MODEL 836 DUAL FREQUENCY 28/200 KHZ SINGLE BEAM SONAR. ALL DEPTHS REPORTED IN HIGH FREQUENCY.
- | SURVEY VESSEL | DATE OF SURVEY | CUT |
|---------------|----------------|-------------|
| WB-32 | 21 MAY 2012 | 24, 25 & 26 |
| WB-32 | 22 MAY 2012 | 20 THRU 27D |
| WB-32 | 23 MAY 2012 | 23 THRU 26 |
| WB-32 | 24 MAY 2012 | 27 |
8. THE INFORMATION DEPICTED ON THIS MAP REPRESENTS THE RESULTS OF SURVEYS MADE ON THE DATES INDICATED ABOVE AND CAN ONLY BE CONSIDERED AS INDICATING THE GENERAL CONDITIONS AT THAT TIME. THIS CHART IS SOLELY FOR THE DISTRIBUTION OF AVAILABLE DEPTHS AT THE TIME OF SURVEY.
 9. SURVEY ACCURACY STANDARDS, QUALITY CONTROL, AND QUALITY ASSURANCE REQUIREMENTS WERE FOLLOWED DURING THIS SURVEY IN ACCORDANCE WITH USACE EM 1110-2-1003, HYDROGRAPHIC SURVEYING, 1 JAN 02.

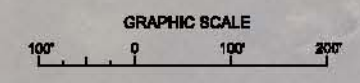
LEGEND	
+BM	BENCHMARK
[Symbol]	LIGHTED BEACON
[Symbol]	GREEN DAYBEACON
[Symbol]	RED DAYBEACON
[Symbol]	RED LIGHTED BUOY
[Symbol]	GREEN LIGHTED BUOY
[Symbol]	CAN BUOY
[Symbol]	NUN BUOY
[Symbol]	TIDE STAFF
[Symbol]	PROJECT DEPTH



SHEET LOCATION



AIDS TO NAVIGATION	PLANE COORDINATES		LATITUDE	LONGITUDE
	X	Y		
LT - 51 (05/12)	509,863.41	2,241,861.31	30°26'57.91"	81°27'55.78"
LT - 53 (05/12)	511,077.51	2,239,254.71	30°29'32.18"	81°27'38.35"



NOTES:
 1. REFER TO SURVEY NO. 12-117.
 2. SEE SHEET NO. 1 FOR SURVEY NOTES.

US Army Corps of Engineers
 Jacksonville District
SAFETY ON THIS JOB DEPENDS ON YOU

12-117-G-88-BIRDSDON
 WWW-CHEMIST/DON
 12-117-A-400N/DON
 12-117-A-400N/DON
 12-117-A-400N/DON

Drawn by: D.V.T.
 Checked by: D.V.T.
 Date: 08/08/2012

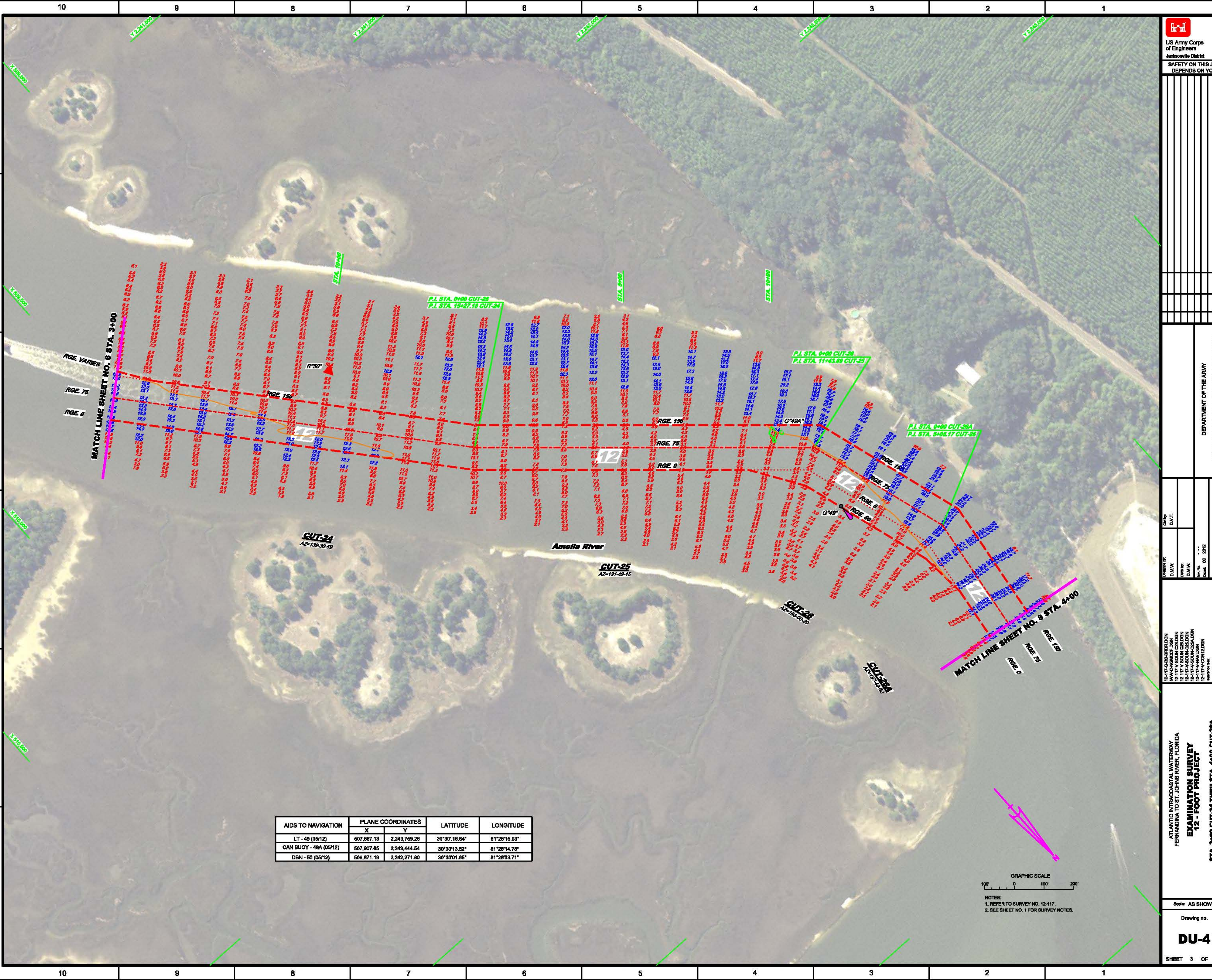
DEPARTMENT OF THE ARMY
 JACKSONVILLE DISTRICT, CORPS OF ENGINEERS
 JACKSONVILLE, FLORIDA

ATLANTIC INTRACASTAL WATERWAY
 FERNANDINA TO ST. JOHNS RIVER, FLORIDA
**EXAMINATION SURVEY
 12 - FOOT PROJECT**
 STA. 1+00 CUT-23 THRU STA. 3+00 CUT-24
PLAN

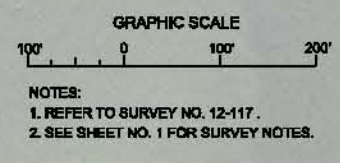
Scale: AS SHOWN

Drawing no. **DU-5**

SHEET 2 OF 5



AIDS TO NAVIGATION	PLANE COORDINATES		LATITUDE	LONGITUDE
	X	Y		
LT - 49 (05/12)	507,887.13	2,243,769.26	30°30'16.64"	81°28'16.03"
CAN BUOY - 48A (05/12)	507,807.85	2,243,444.84	30°30'13.52"	81°28'14.78"
DBN - 50 (05/12)	506,871.19	2,242,271.80	30°30'01.95"	81°28'03.71"



US Army Corps of Engineers
Jacksonville District
SAFETY ON THIS JOB DEPENDS ON YOU

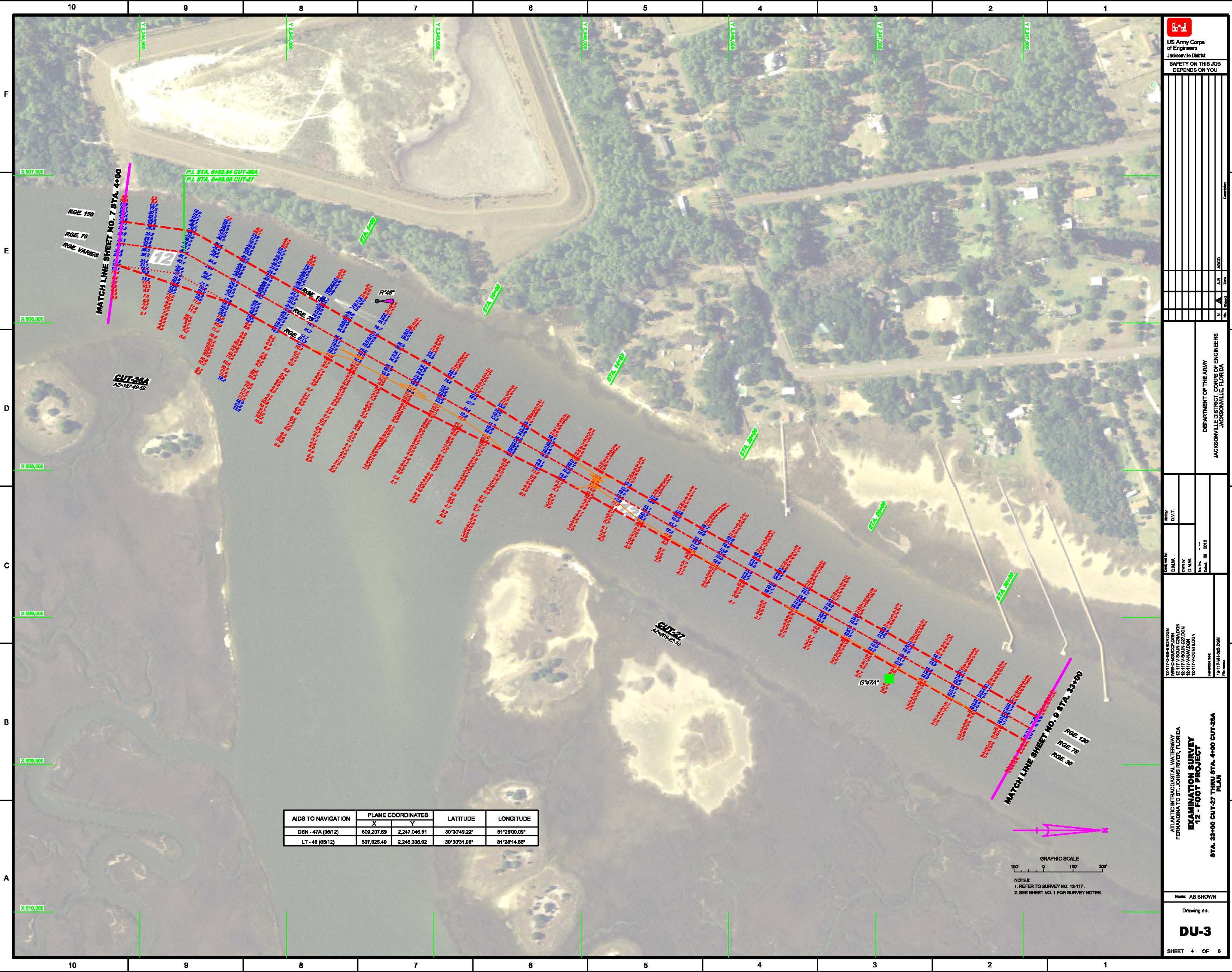
NO.	REV.	DATE	BY	APPROVED BY	
				NAME	TITLE

DEPARTMENT OF THE ARMY
JACKSONVILLE DISTRICT, CORPS OF ENGINEERS
JACKSONVILLE, FLORIDA

Checked by	D.V.T.
Drawn by	D.M.N.
Date	08/06/2012

ATLANTIC INTRACASTAL WATERWAY
FERNANDINA TO ST. JOHNS RIVER, FLORIDA
**EXAMINATION SURVEY
12 - FOOT PROJECT**

STA. 3+00 CUT-24 THRU STA. 4+00 CUT-26A
PLAN
Scale: AS SHOWN
Drawing no.
DU-4
SHEET 3 OF 6



AIDS TO NAVIGATION	PLANE COORDINATES		LATITUDE	LONGITUDE
	X	Y		
DBN - 47A (06/12)	508,207.89	2,247,045.51	30°30'48.22"	81°28'00.09"
LT - 48 (05/12)	507,925.49	2,245,308.92	30°30'31.98"	81°28'14.86"



NOTES:
 1. REFER TO SURVEY NO. 12-117.
 2. SEE SHEET NO. 1 FOR SURVEY NOTES.

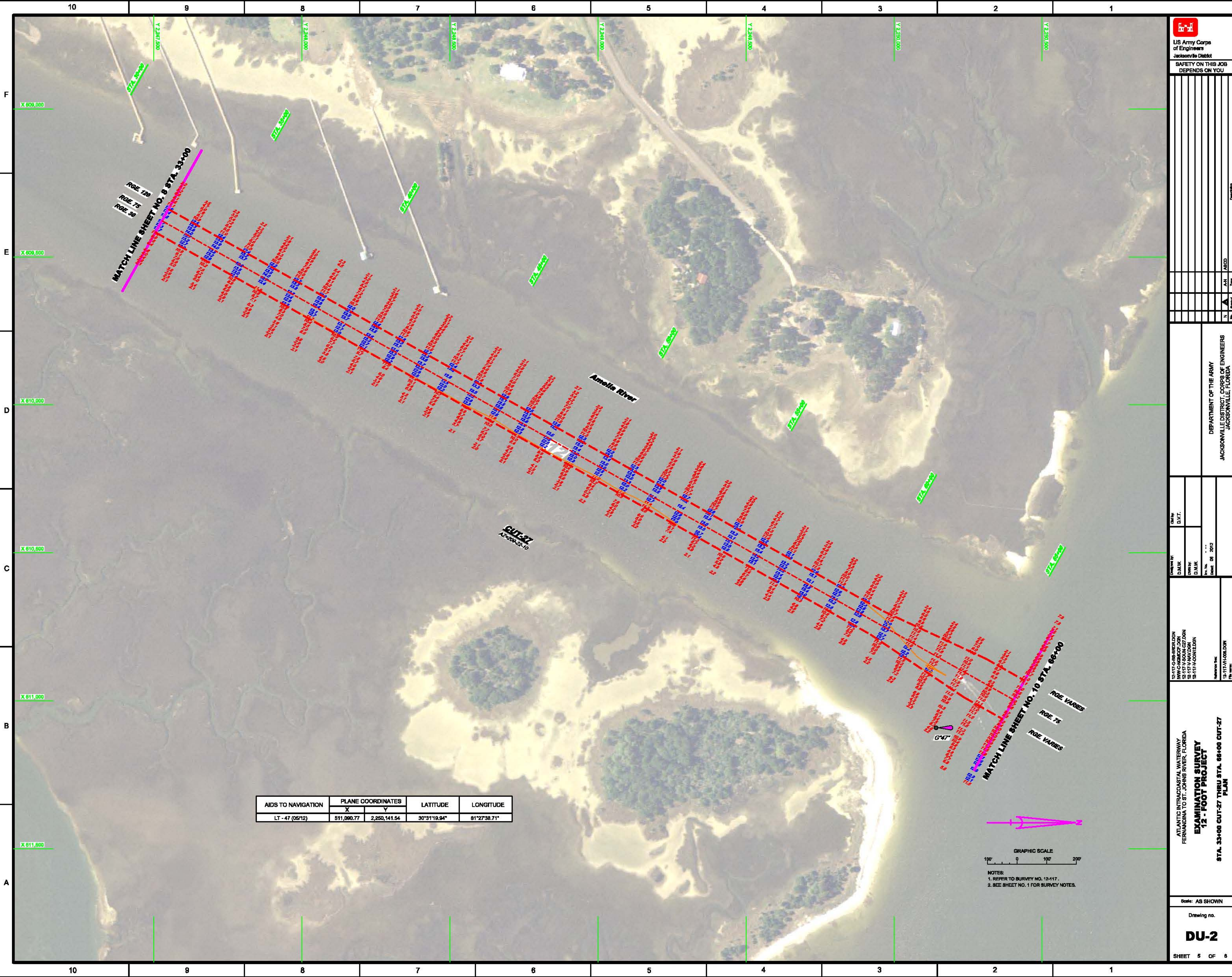
US Army Corps of Engineers
 Jacksonville District
 SAFETY ON THIS JOB
 DEPENDS ON YOU

DATE	DRAWN BY	CHECKED BY	DATE	DRAWN BY

DEPARTMENT OF THE ARMY
 JACKSONVILLE DISTRICT, CORPS OF ENGINEERS
 JACKSONVILLE, FLORIDA

ATLANTIC INTRACASTAL WATERWAY
 FERNANDINA TO ST. JOHNS RIVER, FLORIDA
EXAMINATION SURVEY
12 - FOOT PROJECT
 STA. 33+00 CUT-27 THRU STA. 4+00 CUT-26A
 PLAN

Scale: AS SHOWN
 Drawing no.
DU-3
 SHEET 4 OF 8



AIDS TO NAVIGATION	PLANE COORDINATES		LATITUDE	LONGITUDE
	X	Y		
LT-47 (05'12)	511,090.77	2,250,141.54	30°31'19.94"	81°27'38.71"

GRAPHIC SCALE
 100' 0 100 200'
 NOTES:
 1. REFER TO SURVEY NO. 12-117.
 2. SEE SHEET NO. 1 FOR SURVEY NOTES.

US Army Corps of Engineers
 Jacksonville District
 SAFETY ON THIS JOB
 DEPENDS ON YOU

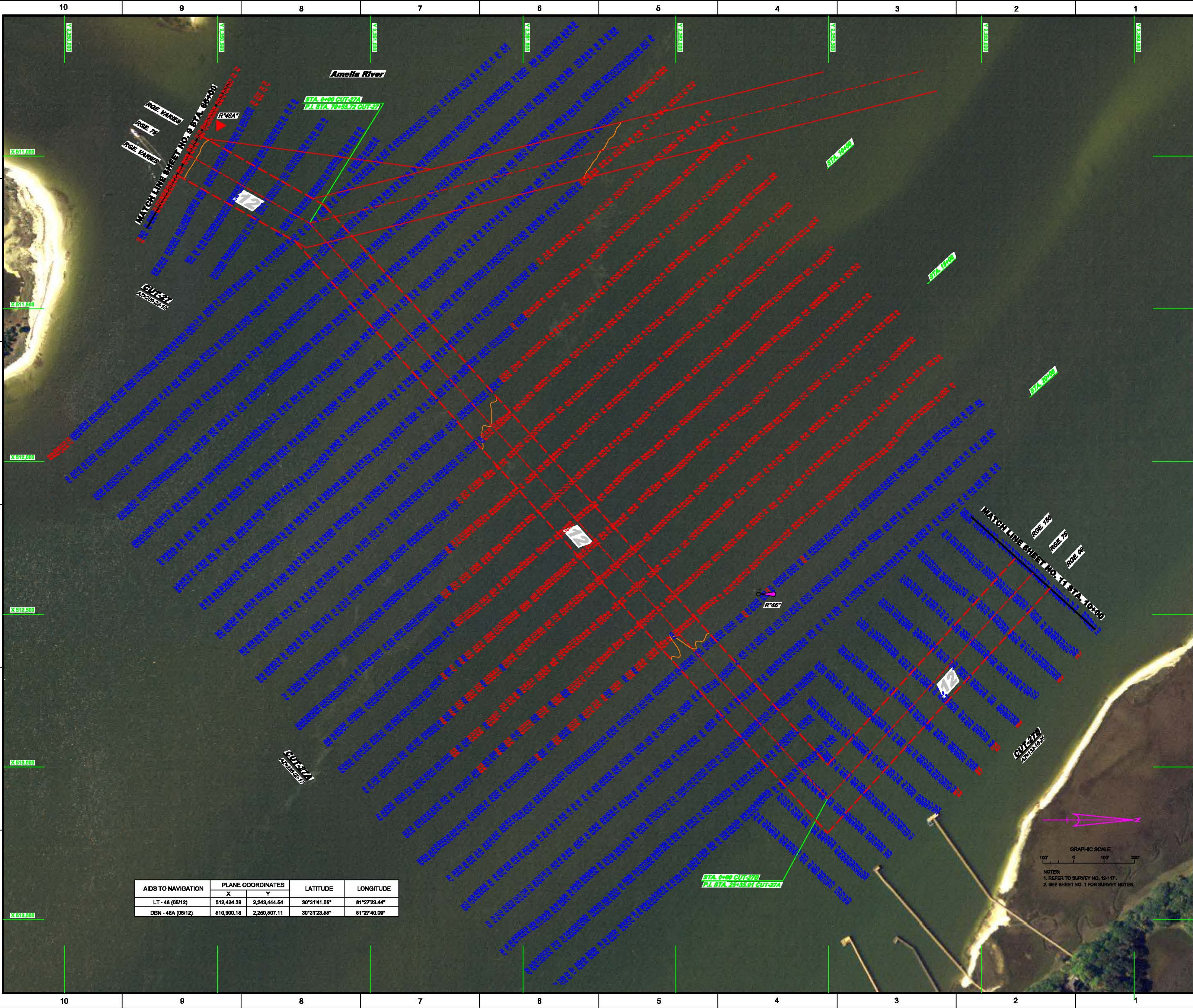
Checked by:	D.V.T.
Drawn by:	D.A.M.
Checked by:	D.A.M.
Date:	08/06/2012

DEPARTMENT OF THE ARMY
 JACKSONVILLE DISTRICT, CORPS OF ENGINEERS
 JACKSONVILLE, FLORIDA

12-117-G-88-RIE/BJL/DJN
 WWW-CHAMBERS/JON
 12-117-A/AV/DJN
 12-117-A/COM/BJL/DJN

ATLANTIC INTRACASTAL WATERWAY
 FERNANDINA TO ST. JOHNS RIVER, FLORIDA
EXAMINATION SURVEY
12 - FOOT PROJECT
PLAN
 STA. 33+00 CUT-27 THRU STA. 66+00 CUT-27

Scale: AS SHOWN
 Drawing no.
DU-2
 SHEET 5 OF 8



AIDS TO NAVIGATION	PLANE COORDINATES		LATITUDE	LONGITUDE
	X	Y		
LT-46 (05/12)	512,434.39	2,249,444.54	30°31'41.06"	81°27'23.44"
DBN-48A (05/12)	610,900.18	2,260,807.11	30°31'23.66"	81°27'40.09"

GRAPHIC SCALE
100 0 100 200
NOTES:
1. REFER TO SURVEY NO. 12-117.
2. SEE SHEET NO. 1 FOR SURVEY NOTES.

US Army Corps of Engineers
Jacksonville District
SAFETY ON THIS JOB DEPENDS ON YOU

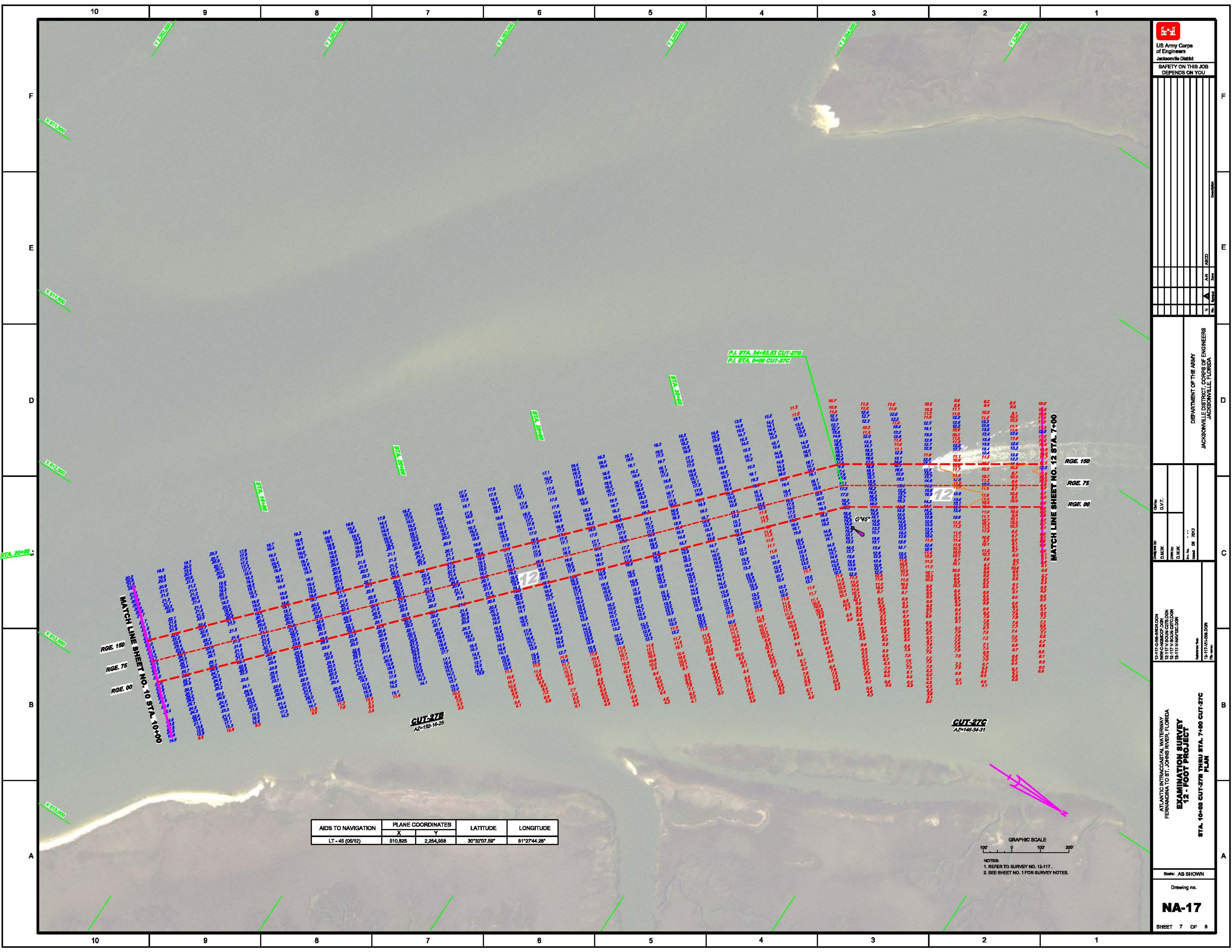
ATLANTIC INTRACOASTAL WATERWAY PENNINGDA TO ST. JOHNS RIVER, FLORIDA EXAMINATION SURVEY 12 - FOOT PROJECT STA. 33+00 CUT-27 THRU STA. 10+00 CUT-27B PLAN	DEPARTMENT OF THE ARMY JACKSONVILLE DISTRICT, CORPS OF ENGINEERS JACKSONVILLE, FLORIDA
Designer: D.M.W. Checker: D.V.T. Date: 08/2012	Reference: 12-117-G-88-BRIDGON 12-117-G-88-BRIDGON 12-117-A-800-N-C27A-DGN 12-117-A-800-N-C27B-DGN 12-117-A-800-N-C27C-DGN 12-117-A-800-N-C27D-DGN
Scale: AS SHOWN Drawing no. NA-18 SHEET 6 OF 8	City: D.V.T. Date: 08/2012

DEPARTMENT OF THE ARMY
 JACKSONVILLE DISTRICT, CORPS OF ENGINEERS
 JACKSONVILLE, FLORIDA

Checked by: D.V.T.
 Drawn by: D.M.M.
 Date: 06/08/2012

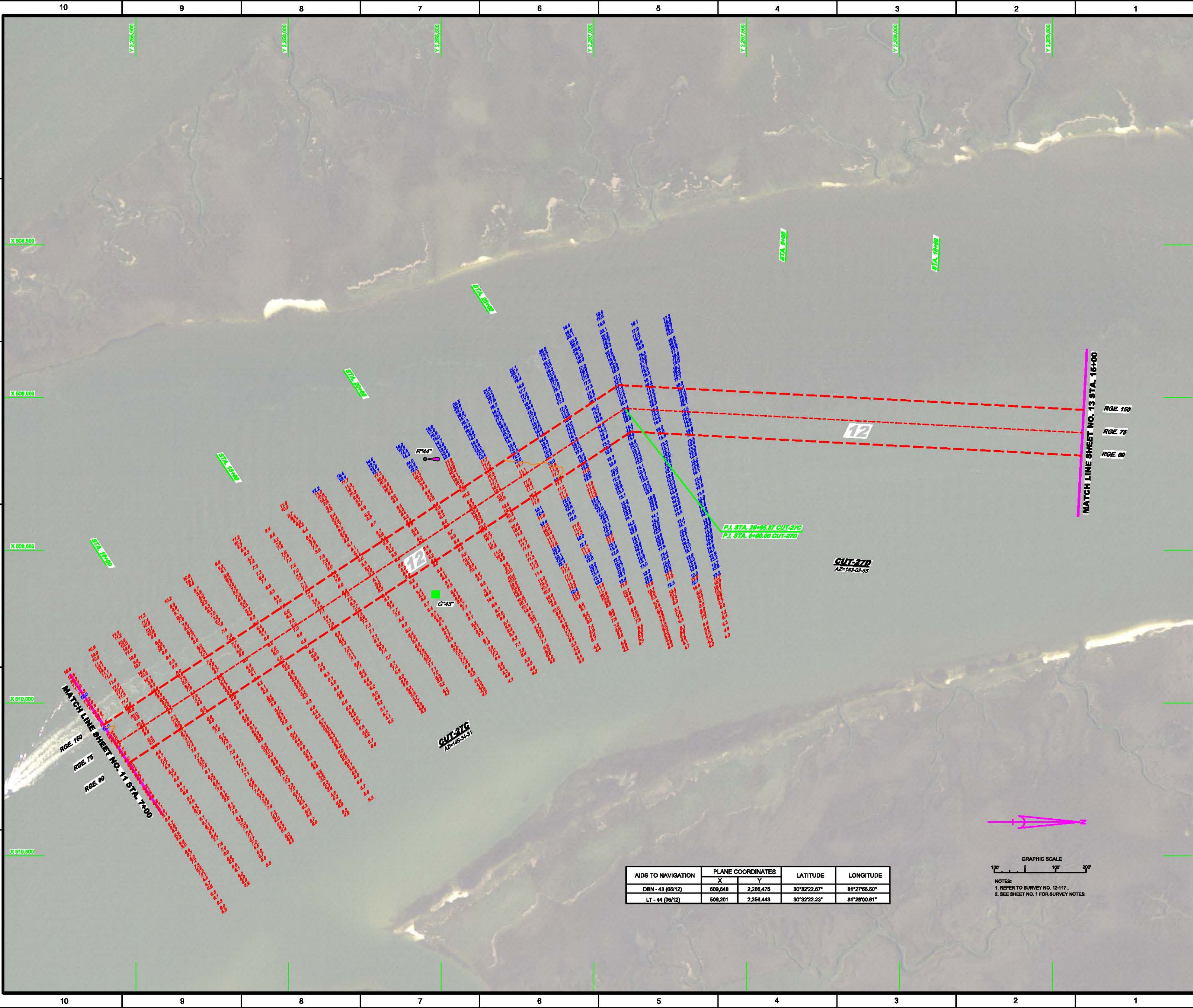
13-117-G-88-BUILD/DON
 WWW.CHEMCOF.COM
 13-117-V-800M-CO2/DON
 13-117-V-800M-02/DON

ATLANTIC INTRACASTAL WATERWAY
 FERNANDINA TO ST. JOHN'S RIVER, FLORIDA
**EXAMINATION SURVEY
 12 - FOOT PROJECT**
 STA. 10+00 CUT-278 THRU STA. 7+00 CUT-27C
 PLAN



AIDS TO NAVIGATION	PLANE COORDINATES		LATITUDE	LONGITUDE
	X	Y		
LT-45 (06/12)	510,825	2,254,958	30°32'07.89"	81°27'44.28"

GRAPHIC SCALE
 100' 0 100 200
 NOTES:
 1. REFER TO SURVEY NO. 12-117.
 2. SEE SHEET NO. 1 FOR SURVEY NOTES.



AIDS TO NAVIGATION	PLANE COORDINATES		LATITUDE	LONGITUDE
	X	Y		
DBN - 43 (06/12)	609,648	2,266,476	30°32'22.67"	81°27'56.50"
LT - 44 (06/12)	509,201	2,258,443	30°32'22.23"	81°28'00.81"

GRAPHIC SCALE
 100' 0 100' 200'
 NOTES:
 1. REFER TO SURVEY NO. 12-117.
 2. SEE SHEET NO. 1 FOR SURVEY NOTES.

US Army Corps of Engineers
 Jacksonville District
 SAFETY ON THIS JOB
 DEPENDS ON YOU

DEPARTMENT OF THE ARMY JACKSONVILLE DISTRICT, CORPS OF ENGINEERS JACKSONVILLE, FLORIDA	STA. 7+00 CUT-27C THRU STA. 15+00 CUT-27D PLAN NA-16
12-117-G-88-BIRDLDGN WWW-CHMRCF-DON 12-117-A-800N-C27D-DGN 12-117-A-800N-C27D-DGN 12-117-A-800N-C27D-DGN	Date: 08/08/2012 Drawn by: D.V.T. Checked by: D.V.T. Date: 08/08/2012
Scale: AS SHOWN Drawing no.	SHEET 6 OF 8