


AIDS TO NAVIGATION	PLANE COORDINATES		LATITUDE	LONGITUDE
	X	Y		
DBN-52 (04/12)	771.013	913.241	26°50'46.29"	80°38'51.99"
DBN-53 (04/12)	771.071	913.034	26°50'42.46"	80°38'51.35"
DBN-54 (04/12)	770.297	911.715	26°50'29.41"	80°38'59.95"
DBN-55 (04/12)	770.682	911.534	26°50'27.61"	80°38'55.71"


 US Army Corps of Engineers  
 Jacksonville District  
 SAFETY ON THIS JOB  
 DEPENDS ON YOU

DEPARTMENT OF THE ARMY  
 JACKSONVILLE DISTRICT, CORPS OF ENGINEERS  
 JACKSONVILLE, FLORIDA

Call by: DVT  
 Designed by: WRM  
 Drawn by: WRM  
 File No.: W1225-000-0000  
 Date: DDMMYY  
 Project: DDMMYY

OKEECHOBEE WATERWAY, FLORIDA  
**HYDRO EXAMINATION SURVEY FY11**  
 6-FOOT PROJECT  
 ROUTE-2 (RIM CANAL)  
**PLAN**

Scale: AS SHOWN  
 Drawing no.  
**49/67**  
 SHEET 71 OF 133

GRAPHIC SCALE  
 100' 0 100' 200'  
 NOTES:  
 1. REFER TO SURVEY NO. 12-032.  
 2. SEE SHEET NO. 1 FOR SURVEY NOTES.







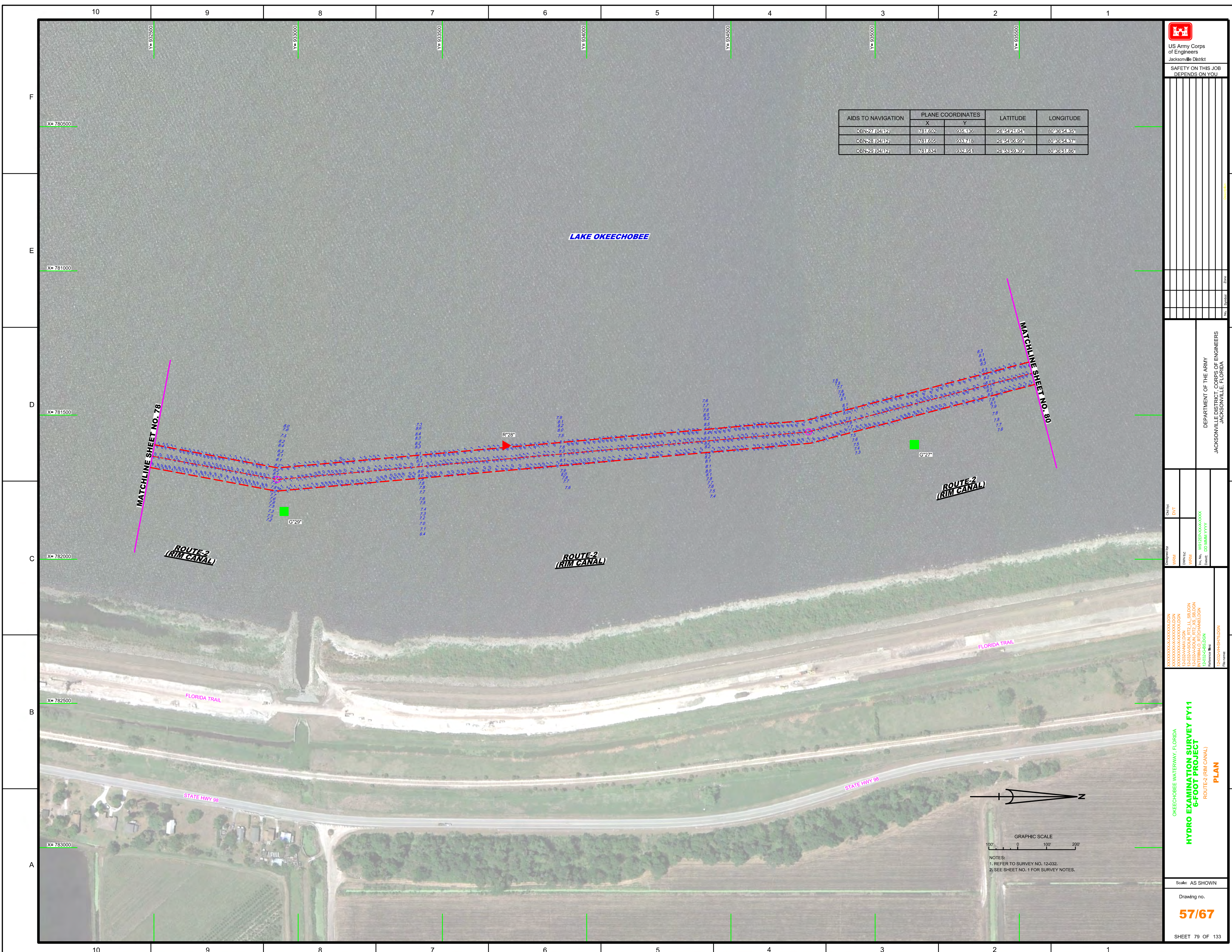












AIDS TO NAVIGATION	PLANE COORDINATES		LATITUDE	LONGITUDE
	X	Y		
DBN-27 (0412)	781.602	935.136	26°54'21.04"	80°36'54.35"
DBN-28 (0412)	781.605	933.718	26°54'08.99"	80°36'54.37"
DBN-29 (0412)	781.634	932.951	26°53'59.39"	80°36'51.86"

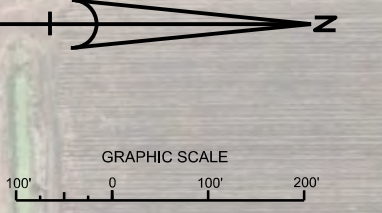
US Army Corps of Engineers  
 Jacksonville District  
 SAFETY ON THIS JOB DEPENDS ON YOU

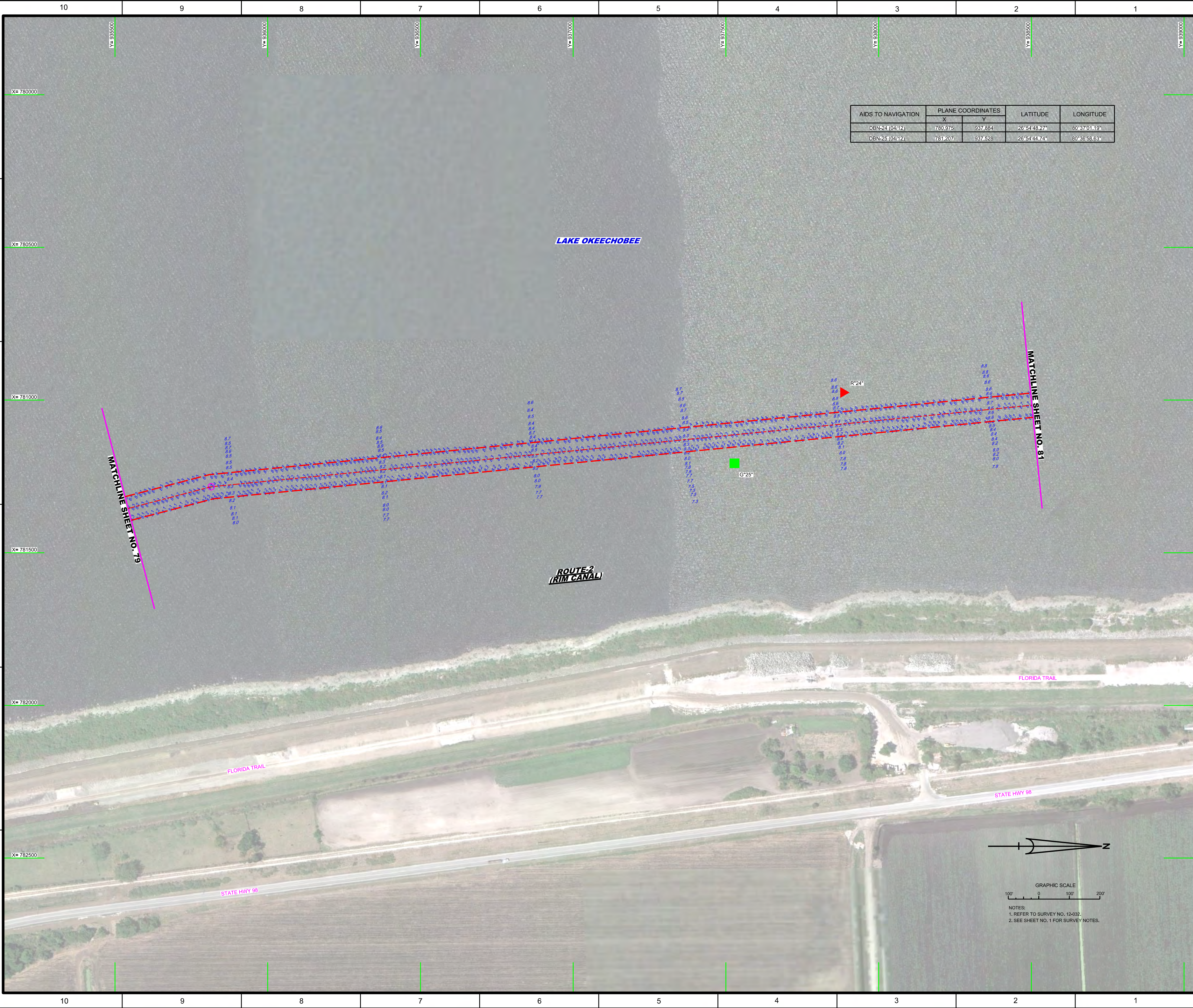
DEPARTMENT OF THE ARMY  
 JACKSONVILLE DISTRICT, CORPS OF ENGINEERS  
 JACKSONVILLE, FLORIDA

Designed by: WRM  
 Drawn by: WRM  
 File No: WRP27-28-29-30-31-32  
 Date: DDMMYY


**HYDRO EXAMINATION SURVEY FY11  
 6-FOOT PROJECT**  
 OKEECHOBEE WATERWAY, FLORIDA  
 ROUTE-2 (RIM CANAL) PLAN

Scale: AS SHOWN  
 Drawing no. **57/67**  
 SHEET 79 OF 133





AIDS TO NAVIGATION	PLANE COORDINATES		LATITUDE	LONGITUDE
	X	Y		
DBN-24 (04/12)	780,975	937,884	26°54'43.27"	80°37'01.19"
DBN-25 (04/12)	781,207	937,528	26°54'44.74"	80°36'58.63"

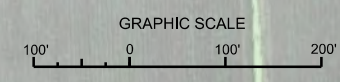
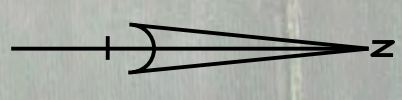
  
 US Army Corps of Engineers  
 Jacksonville District  
 SAFETY ON THIS JOB  
 DEPENDS ON YOU

DEPARTMENT OF THE ARMY  
 JACKSONVILLE DISTRICT, CORPS OF ENGINEERS  
 JACKSONVILLE, FLORIDA

Designed by: WRM  
 Drawn by: WRM  
 Checked by: WRM  
 Date: 00/00/00

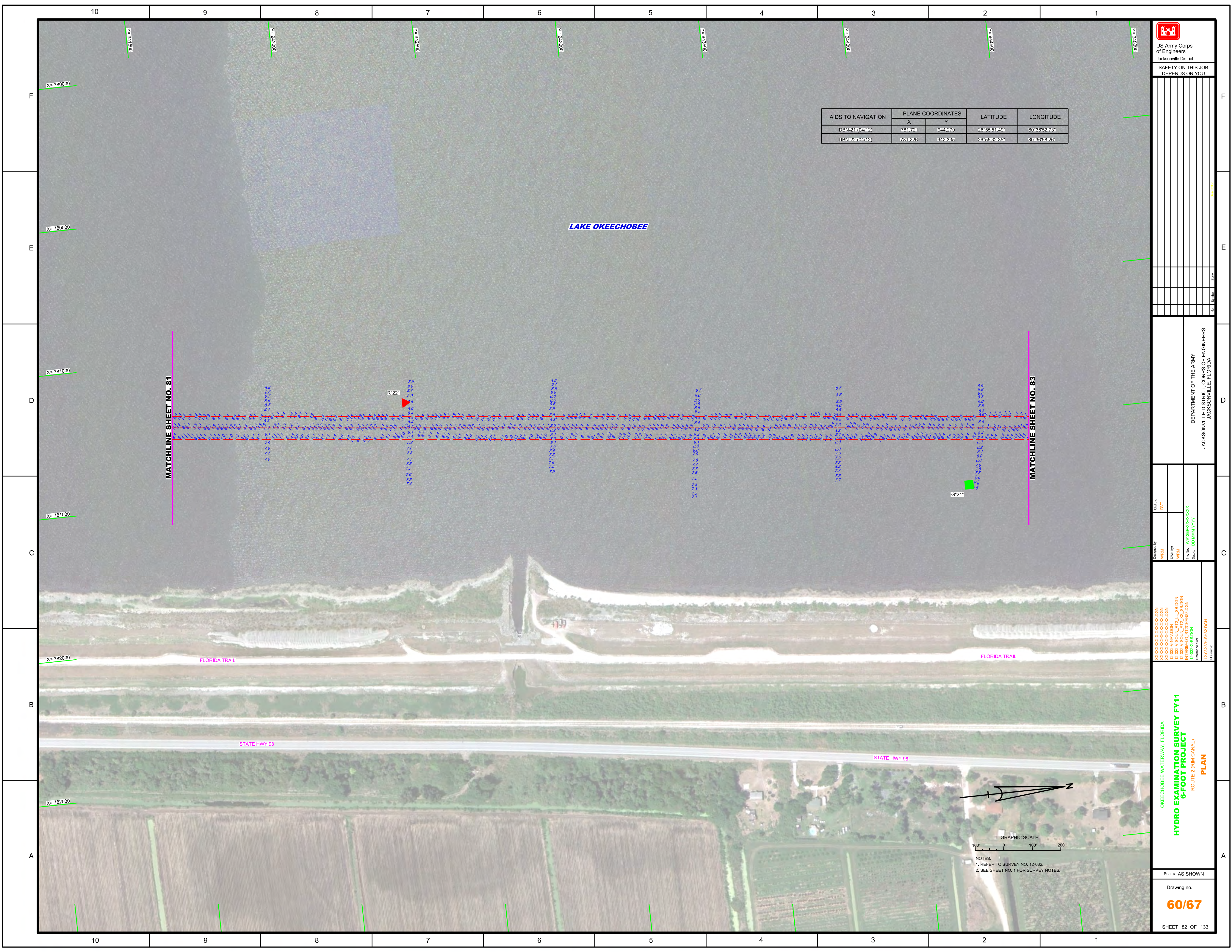
OKEECHOBEE WATERWAY, FLORIDA  
**HYDRO EXAMINATION SURVEY FY11**  
**6-FOOT PROJECT**  
 ROUTE 2 (RIM CANAL)  
**PLAN**

Scale: AS SHOWN  
 Drawing no.  
**58/67**  
 SHEET 80 OF 133



NOTES:  
 1. REFER TO SURVEY NO. 12-032.  
 2. SEE SHEET NO. 1 FOR SURVEY NOTES.





 US Army Corps of Engineers Jacksonville District SAFETY ON THIS JOB DEPENDS ON YOU			

AIDS TO NAVIGATION	PLANE COORDINATES		LATITUDE	LONGITUDE
	X	Y		
DBN-21 (04/12)	781,721	944,270	26°55'51.49"	80°36'52.73"
DBN-22 (04/12)	781,226	942,335	26°55'32.35"	80°36'58.26"

DEPARTMENT OF THE ARMY  
 JACKSONVILLE DISTRICT, CORPS OF ENGINEERS  
 JACKSONVILLE, FLORIDA

Designed by: **WRM**  
 Drawn by: **WRM**  
 Date: **00/00/00**  
 File Name: **12-032-04-HS-82.DGN**  
 Reference File: **12-032-04-HS-82.DGN**

**OKEECHOBEE WATERWAY, FLORIDA**  
**HYDRO EXAMINATION SURVEY FY11**  
**6-FOOT PROJECT**  
**ROUTE-2 (RIM CANAL)**  
**PLAN**

Scale: AS SHOWN  
 Drawing no.  
**60/67**  
 SHEET 82 OF 133

GRAPHIC SCALE  
 100' 0 100' 200'  
 NOTES:  
 1. REFER TO SURVEY NO. 12-032.  
 2. SEE SHEET NO. 1 FOR SURVEY NOTES.

MATCHLINE SHEET NO. 81

MATCHLINE SHEET NO. 83

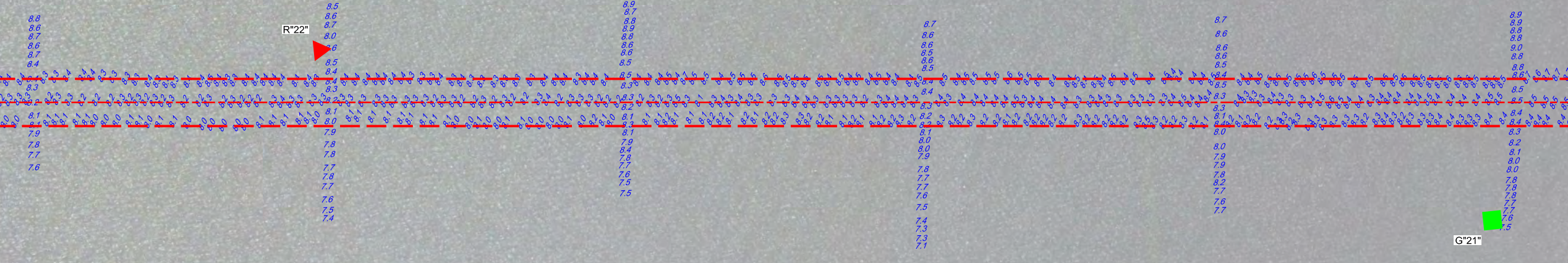
FLORIDA TRAIL

FLORIDA TRAIL

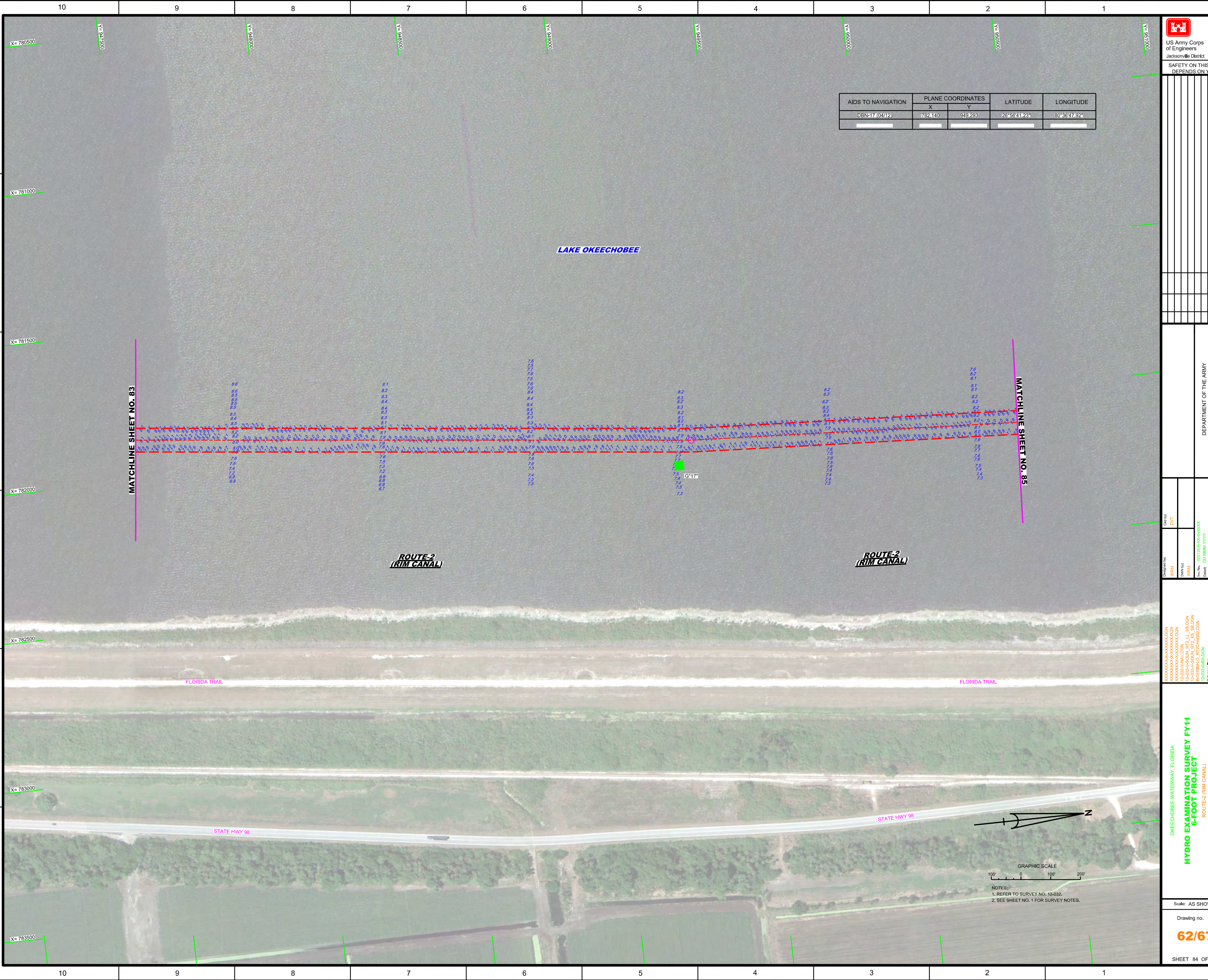
STATE HWY 98

STATE HWY 98


LAKE OKEECHOBEE







AIDS TO NAVIGATION	PLANE COORDINATES		LATITUDE	LONGITUDE
	X	Y		
DBN-17 (04/12)	782,140	949,293	26°56'41.23"	80°38'47.92"

  
 US Army Corps of Engineers  
 Jacksonville District  
 SAFETY ON THIS JOB  
 DEPENDS ON YOU

DEPARTMENT OF THE ARMY  
 JACKSONVILLE DISTRICT, CORPS OF ENGINEERS  
 JACKSONVILLE, FLORIDA

Drawn by: WRM  
 Designated by: WRM  
 Date: 02/01/2011

OKEECHOBEE WATERWAY, FLORIDA  
 HYDRO EXAMINATION SURVEY FY11  
 6-FOOT PROJECT  
 ROUTE-2 (RIM CANAL)  
 PLAN

Scale: AS SHOWN  
 Drawing no.  
**62/67**









