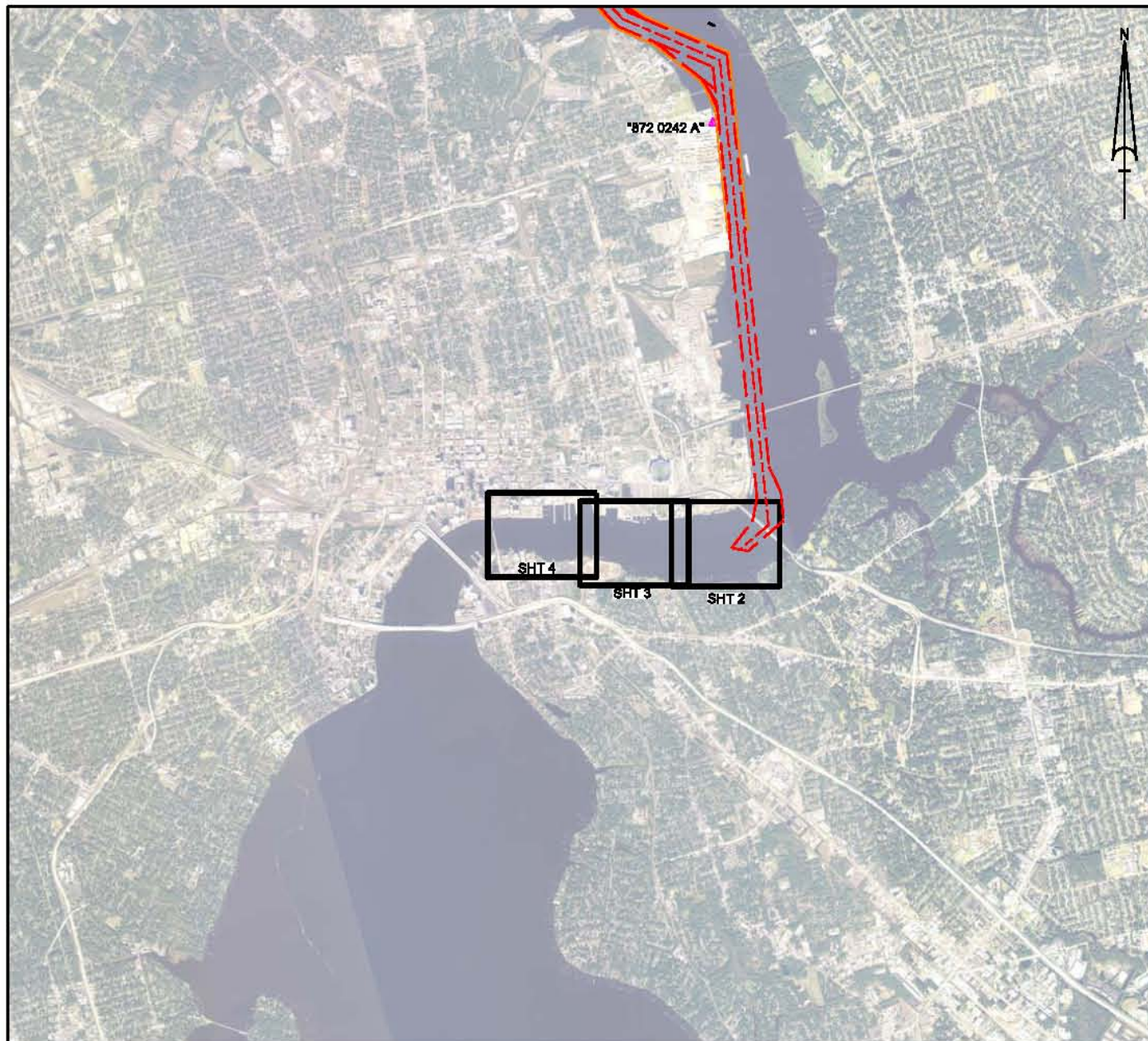


ST. JOHNS RIVER DUVAL COUNTY, FLORIDA BUOY 80 TO MAIN STREET BRIDGE EXAMINATION SURVEY



MAP SHEET NOTES:

REFER TO SURVEY NO. 11-179

ELEVATIONS ARE IN FEET AND TENTHS AND REFER TO THE NOAA REPORTED MEAN LOWER LOW WATER TIDAL DATUM RELATIVE TO THE 1983-2001 TIDAL EPOCH.

TIDAL REDUCTIONS WERE OBTAINED USING REAL-TIME KINEMATIC GPS (RTK) AND UTILIZING A HYPACK KINEMATIC TIDAL DATUM (KTD) MODEL FILE BASED ON NOAA VD DATUM (FILE NAME: JAXHBR-VDATUM-2010APRIL28.KTD).

ALL ELEVATIONS ARE BELOW THE CHART DATUM UNLESS PRECEDED BY A (+) SIGN.

PLANE COORDINATES ARE BASED ON THE TRANSVERSE MERCATOR PROJECTION FOR THE EAST ZONE OF FLORIDA AND REFERENCED TO THE NORTH AMERICAN DATUM OF 1983 (NAD 83).

THIS SURVEY WAS PERFORMED USING REAL-TIME KINEMATIC GPS POSITIONING WITH THE FOLLOWING REFERENCE BASE LOCATION:

TIDAL 672 0242 A, PID 888231
 NORTHING: 2,100,469.392'
 EASTING: 480,861.710'
 NAVD83 ELEVATION: 4.58'
 MLLW ELEVATION: 6.21'

VERTICAL MEASUREMENTS WERE MADE USING A R2 SONIC 2024 MULTIBEAM 8000ER OPERATING AT 240KHZ.

SURVEY VESSEL	DATE OF SURVEY	AREA
FLORIDA	13 SEP 2011	ST. JOHNS RIVER, BUOY-80 TO MAIN ST BRIDGE

THE INFORMATION DEPICTED ON THIS MAP REPRESENTS THE RESULTS OF SURVEYS MADE ON THE DATES INDICATED ABOVE AND CAN ONLY BE CONSIDERED AS INDICATING THE GENERAL CONDITIONS AT THAT TIME. THIS CHART IS SOLELY FOR THE DISTRIBUTION OF AVAILABLE DEPTHS AT THE TIME OF SURVEY.

SURVEY ACCURACY STANDARDS, QUALITY CONTROL, AND QUALITY ASSURANCE REQUIREMENTS WERE FOLLOWED DURING THIS SURVEY IN ACCORDANCE WITH USACE EM 1110-2-1003, HYDROGRAPHIC SURVEYING, 1 JAN 02.

LEGEND	
• BM	BENCHMARK
⚓	LIGHTED BEACON
■	GREEN DAYBEACON
▲	RED DAYBEACON
⚓	RED LIGHTED BUOY
⚓	GREEN LIGHTED BUOY
⚓	CAN BUOY
⚓	NUN BUOY
⚓	TIDE STAFF

BENCHMARK	NAVD ELEV. (FT)
872 0242 A	4.583

US Army Corps of Engineers
Jacksonville District
SAFETY ON THIS JOB DEPENDS ON YOU

DEPARTMENT OF THE ARMY
JACKSONVILLE DISTRICT, CORPS OF ENGINEERS
JACKSONVILLE, FLORIDA

11-179-C-88-BROLDGN
JACKSONVILLE DISTRICT
NEWARCH-BROLDGN

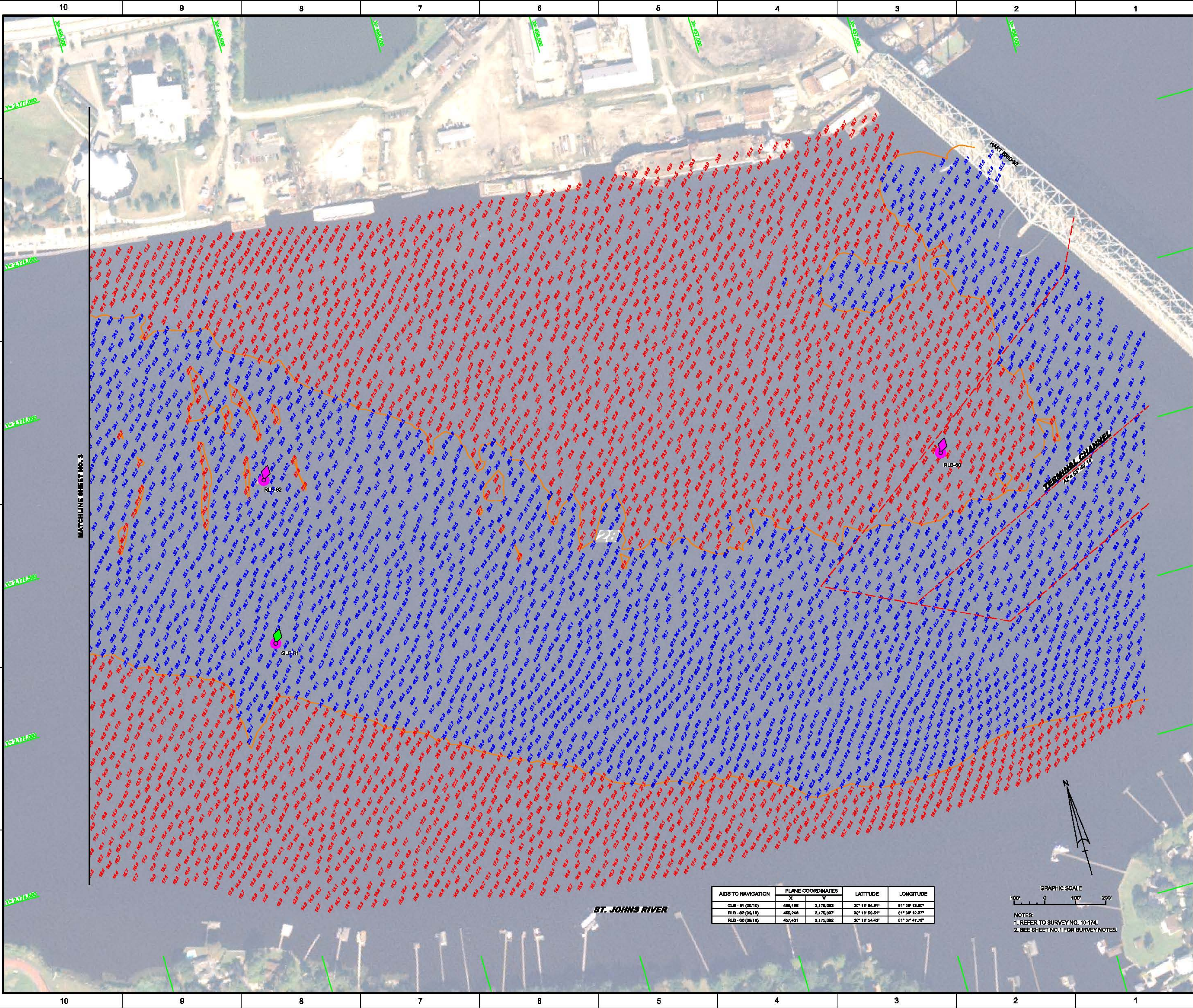
11-179-PA-001.DGN
Plan name

ST. JOHNS RIVER
JACKSONVILLE, FLORIDA
**EXAMINATION SURVEY
28 - FOOT PROJECT**
BUOY - 80 TO MAIN STREET BRIDGE
PLAN

Scale: AS SHOWN

Drawing No.
1 / 4

SHEET 1 OF 4



MATCHLINE SHEET NO. 3

ST. JOHNS RIVER

HART BRIDGE

TERMINAL CHANNEL
N 22° 52' 24" W

RLB-82

GLB-81

RLB-80

AIDS TO NAVIGATION	PLANE COORDINATES		LATITUDE	LONGITUDE
	X	Y		
GLB - 81 (08/10)	456,198	2,176,082	30° 18' 54.91"	81° 38' 13.80"
RLB - 82 (08/10)	456,248	2,176,007	30° 18' 59.61"	81° 38' 12.37"
RLB - 80 (08/10)	457,451	2,175,082	30° 18' 54.43"	81° 37' 47.78"



NOTES:
1. REFER TO SURVEY NO. 10-174.
2. SEE SHEET NO. 1 FOR SURVEY NOTES.

US Army Corps of Engineers
Jacksonville District
SAFETY ON THIS JOB
DEPENDS ON YOU

11-174-08-BROLDJON
JACOBSON
11-174-08-VALDWIN
D.M.W.
11-174-08-ROBSON
W.C.R.
11-174-08-ROBSON
W.C.R.

City: V.D.T.
Drawn by: D.M.W.
In Charge: W.C.R.
Date: 10/2011

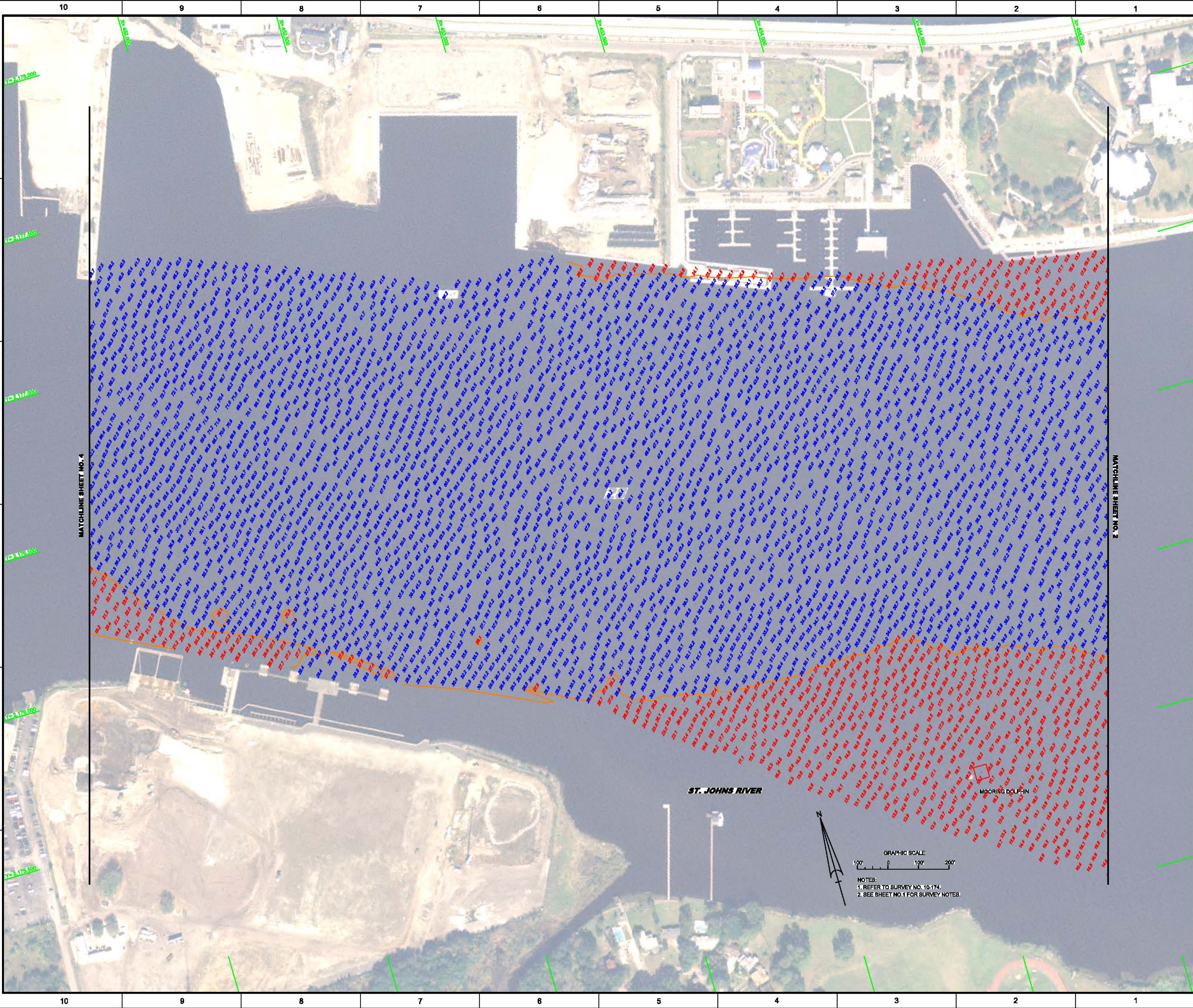
ST. JOHNS RIVER
JACKSONVILLE, FLORIDA
**EXAMINATION SURVEY
28 - FOOT PROJECT**
BUOY - 80 TO MAIN STREET BRIDGE
PLAN

Scale: AS SHOWN

Drawing No.
2 / 4

DEPARTMENT OF THE ARMY
JACKSONVILLE DISTRICT, CORPS OF ENGINEERS
JACKSONVILLE, FLORIDA

11-174-08-ROBSON
W.C.R.
11-174-08-ROBSON
W.C.R.



 US Army Corps of Engineers Jacksonville District SAFETY ON THIS JOB DEPENDS ON YOU	
Designer: 11-179A-0002.DON Checker: 11-179A-0002.DON Date: 10/2011	Department: DEPARTMENT OF THE ARMY District: JACKSONVILLE, FLORIDA
ST. JOHNS RIVER JACKSONVILLE, FLORIDA EXAMINATION SURVEY 28 - FOOT PROJECT BUOY - 80 TO MAIN STREET BRIDGE PLAN	
Scale: AS SHOWN Drawing No.: 3 / 4 SHEET 3 OF 4	Matchline: NO. 1 Matchline: NO. 2

MATCHLINE SHEET NO. 1

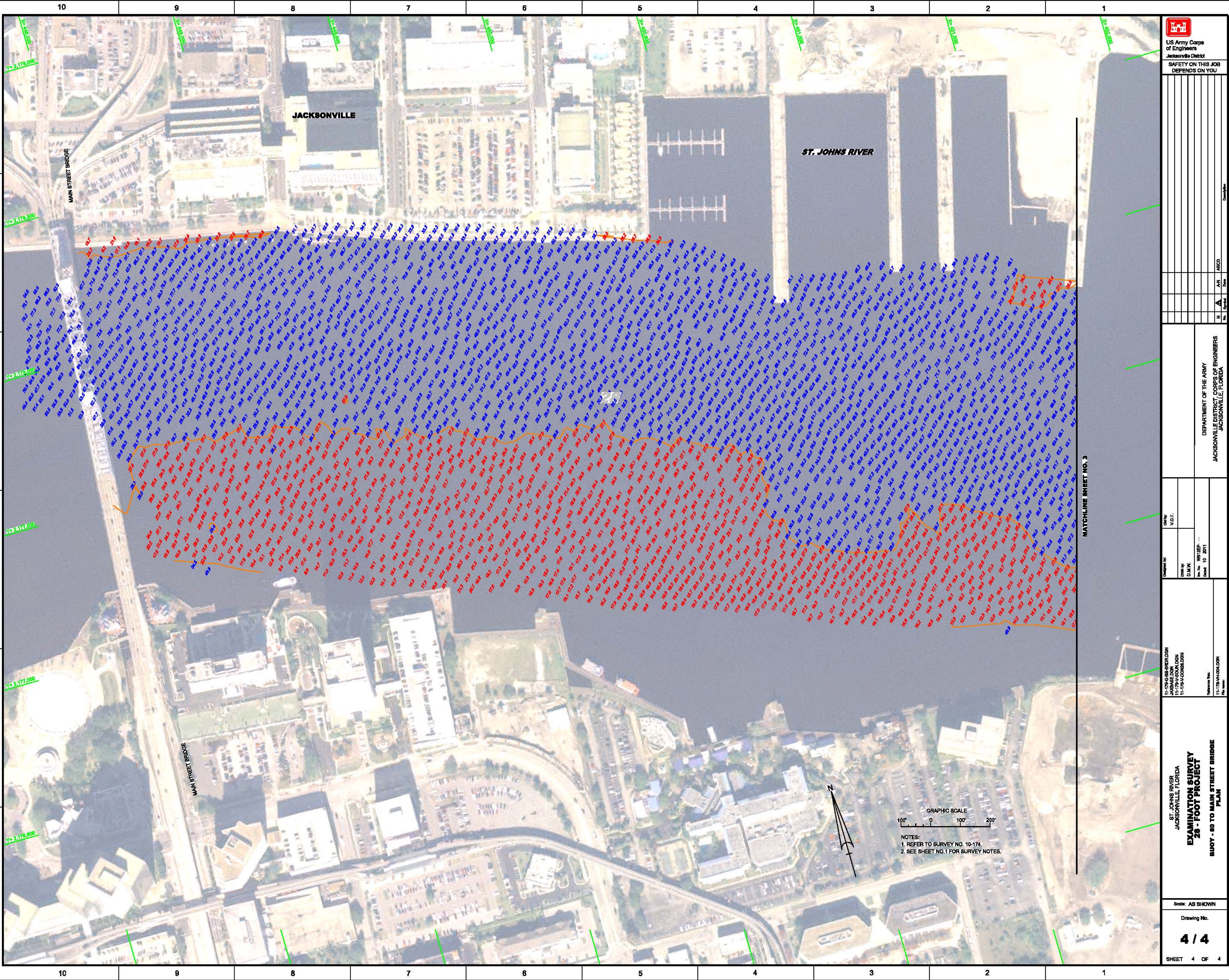
MATCHLINE SHEET NO. 2

ST. JOHNS RIVER

MOORING DOLPHIN



NOTES:
 1. REFER TO SURVEY NO. 10-174.
 2. SEE SHEET NO. 1 FOR SURVEY NOTES.



 US Army Corps of Engineers Jacksonville District SAFETY ON THIS JOB DEPENDS ON YOU	
11-179A-GS-BRIDJEN JACKSONVILLE, FLORIDA 11-179A-00028.DGN	
Designer: [Blank] Drawn by: D.M.W. File No.: 11-179A-00028.DGN Date: 10/2011	Checked by: [Blank] V.D.T.
DEPARTMENT OF THE ARMY JACKSONVILLE DISTRICT, CORPS OF ENGINEERS JACKSONVILLE, FLORIDA	
MATCHLINE SHEET NO. 3	
ST. JOHNS RIVER JACKSONVILLE, FLORIDA EXAMINATION SURVEY 28 - FOOT PROJECT BUOY - 80 TO MAIN STREET BRIDGE PLAN	
Scale: AS SHOWN Drawing No. 4 / 4 SHEET 4 OF 4	