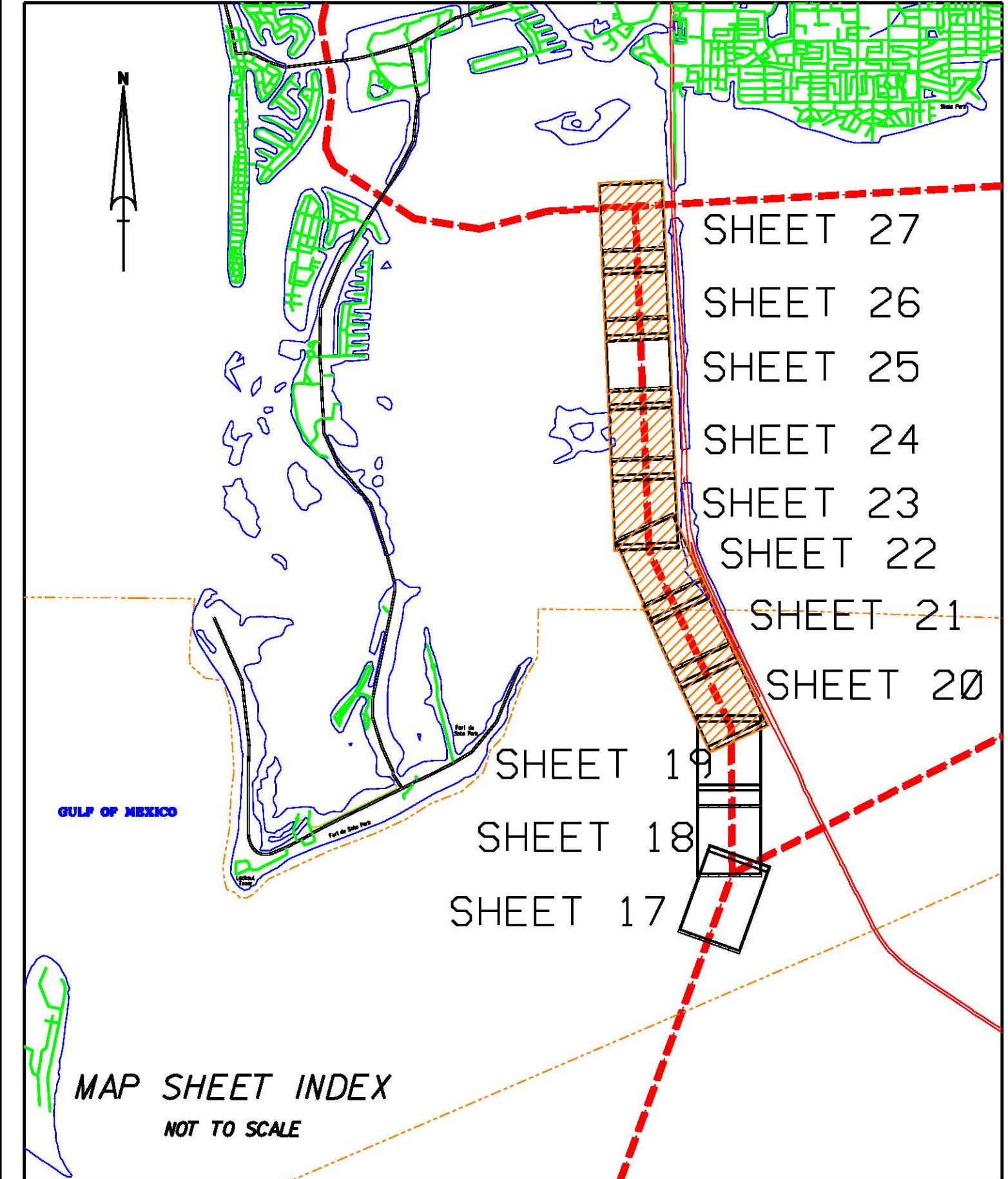
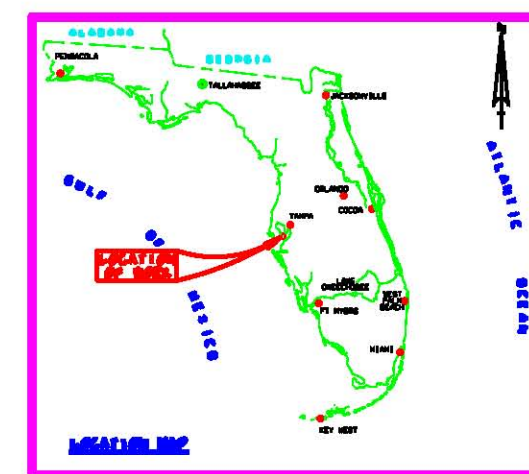


GULF INTRACOASTAL WATERWAY CALOOSAHATCHEE RIVER TO ANCLOTE RIVER CUT SC-2 AND SC-3 PROJECT CONDITION SURVEY 9-FOOT PROJECT



MAP SHEET INDEX
NOT TO SCALE

SURVEY NOTES:

- REFER TO SURVEY 1410-097.
- SOUNDINGS ARE IN FEET AND TENTHS AND REFER TO NOAA'S REPORTED DATUM MEAN LOWER LOW WATER (MLLW) OF THE 1983-2001 TIDAL EPOCH.
- ALL ELEVATIONS ARE BELOW THE CHART DATUM UNLESS PRECEDED BY A '+' SIGN.
- TIDAL REDUCTIONS WERE OBTAINED UTILIZING REAL-TIME KINEMATIC GPS AND REFERENCED TO MLLW (GNSSRTMP4HBRVDATUM-28APR1983GTD).
- PLANE COORDINATES ARE BASED ON THE TRANSVERSE MERCATOR PROJECTION FOR THE WEST ZONE OF FLORIDA AND REFERENCED TO NORTH AMERICAN DATUM OF 1983 (NAD83).
- ALL AZIMUTHS ARE GRID-RECKONED CLOCKWISE FROM SOUTH.
- ALL STATIONING REFERS TO THE CENTERLINE OF THE CHANNEL.
- SURVEY WAS PERFORMED USING REAL-TIME KINEMATIC GPS FOR POSITIONING WITH THE FOLLOWING REFERENCE BASE LOCATION:
 *REFERENCE BASE LOCATED AT "DESOTO C"
 NORTHING: 123,478,000
 EASTING: 47,888,540
 NAD83 ELEVATION: 32.98
 *TIDE STAFF LOCATED FROM "H-1" (17.13' MLLW)
 VERTICAL MEASUREMENTS WERE MADE A ROSS 835 SMARTSOUNDER DUAL-FREQUENCY 28/220KHZ SINGLE-BEAM TRANSUDER. SOUNDINGS SHOWN ARE IN HIGH FREQUENCY (220KHZ).

VESSEL	DATE OF SURVEY	CUT
WB-34	02 AUG 2010	SC-2, SC-3

- SAIDS TO NAVIGATION WERE LOCATED DURING THIS SURVEY.
- THE INFORMATION DEPICTED ON THIS MAP REPRESENTS THE RESULTS OF SURVEYS MADE ON THE DATES INDICATED ABOVE AND CAN ONLY BE CONSIDERED AS INDICATING THE GENERAL CONDITIONS AT THAT TIME. THIS CHART IS SOLELY FOR THE DISTRIBUTION OF AVAILABLE DEPTHS AT THE TIME OF THE SURVEY AND IS NOT TO BE USED FOR NAVIGATION.
- SURVEY ACCURACY PERFORMANCE STANDARDS, QUALITY CONTROL, AND QUALITY ASSURANCE REQUIREMENTS WERE FOLLOWED DURING THIS SURVEY IN ACCORDANCE WITH USACE EM 1110-2-1003, HYDROGRAPHIC SURVEYING, 01 JAN 02.

BENCHMARK	HAND ELEV. (FT)
DESOTO C	32.98

LEGEND	
+BM	BENCHMARK
⚓	LIGHTED BEACON
■	GREEN DAYBEACON
▲	RED DAYBEACON
⚓	RED LIGHTED BUOY
⚓	GREEN LIGHTED BUOY
⚓	CAN BUOY
⚓	NUN BUOY
⚓	TIDE STAFF
8	PROJECT DEPTH

US Army Corps of Engineers
Jacksonville District
SAFETY ON THIS JOB
DEPENDS ON YOU

DEPARTMENT OF THE ARMY
CORPS OF ENGINEERS
JACKSONVILLE, FLORIDA

DESIGNED BY	DATE	SCALE	PROJECT NO.	PROJECT NAME
10-01784-1008	02 AUG 2010	AS SHOWN	10-01784-1008	PROJECT CONDITION SURVEY

INTRACOASTAL WATERWAY
CALOOSAHATCHEE RIVER TO ANCLOTE RIVER
EXAMINATION SURVEY FY10
9-FOOT PROJECT
COVER SHEET AND LOCATION
PLAN

DRAWING NO.
1/8

SHEET 8 OF 228

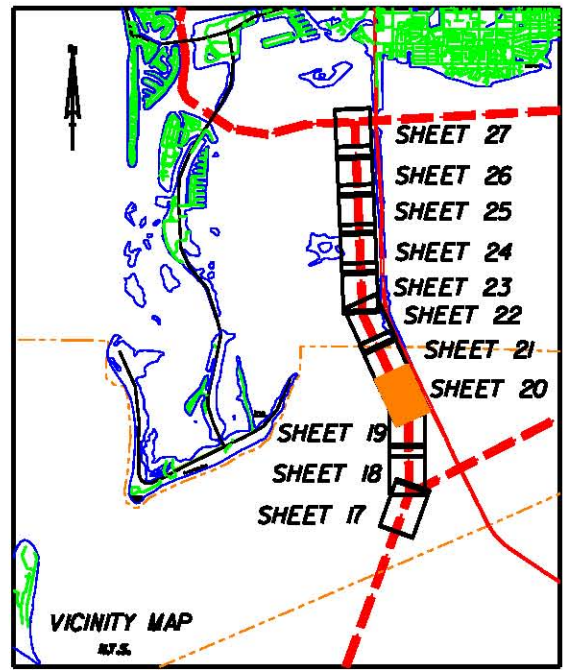
SAFETY ON THIS JOB
DEPENDS ON YOU

DEPARTMENT OF THE ARMY
CORPS OF ENGINEERS
JACKSONVILLE DISTRICT

DESIGNED BY: [blank]
CHECKED BY: [blank]
DATE: [blank]
SCALE: AS SHOWN
PROJECT NO. [blank]
DRAWING NO. [blank]

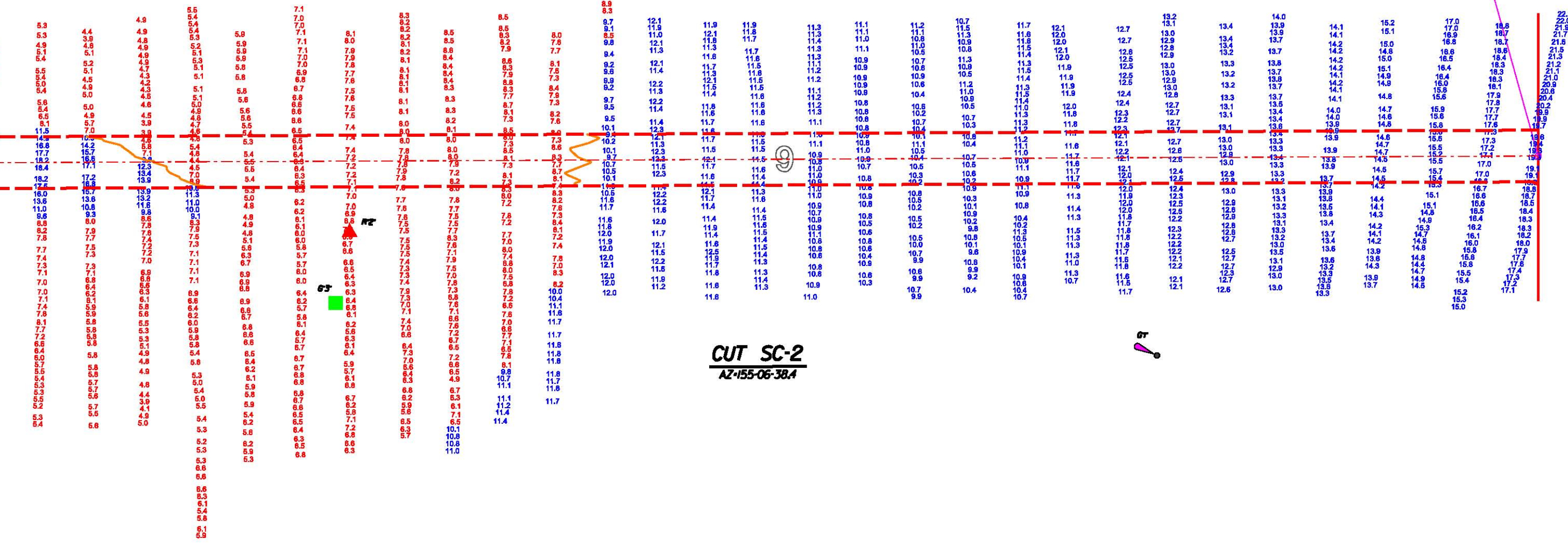
INTRACOASTAL WATERWAY
CALOOSAHATCHEE RIVER TO ANCLOTE RIVER
EXAMINATION SURVEY FY10
9-FOOT PROJECT
STA. 0+00 THRU STA. 30+00 CUT SC-2
PLAN

DRAWING NO.
2/8
SHEET 2 OF 222



MATCHLINE SHEET NO. 21 STA. 30+00

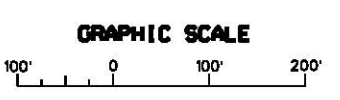
MATCHLINE SHEET NO. 19 STA. 0+00



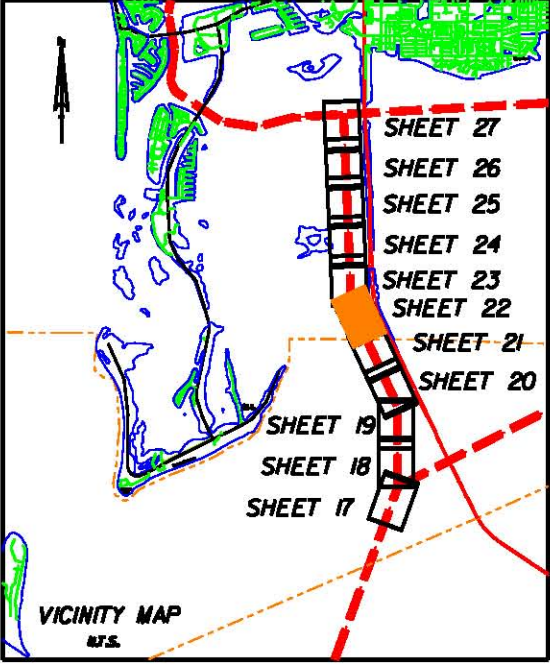
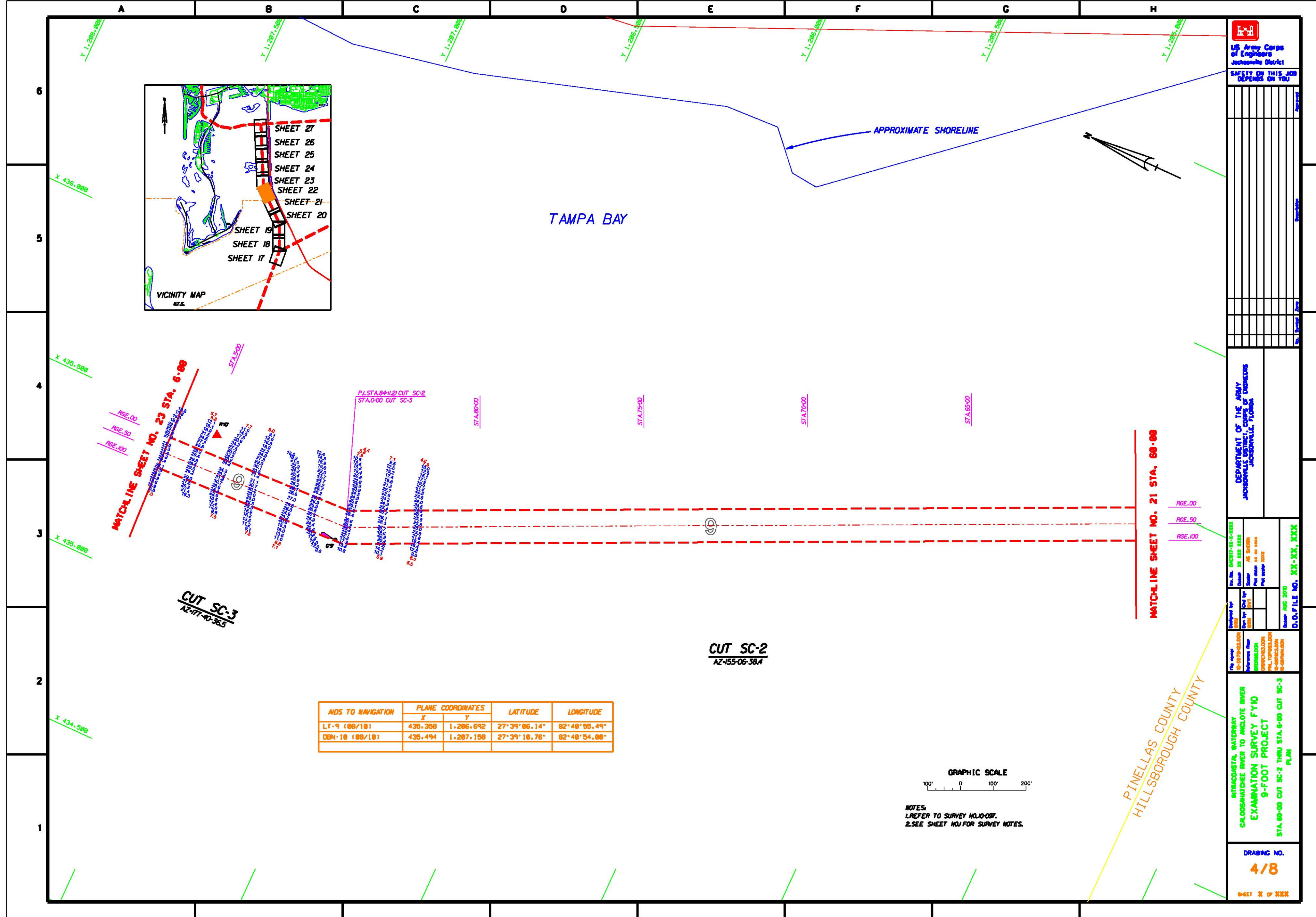
CUT SC-2
AZ+55-06-38.4

P.L. STA. 62+90.29 CUT SC-1
P.L. STA. 0+00 CUT SC-2

AIDS TO NAVIGATION	PLANE COORDINATES		LATITUDE	LONGITUDE
	X	Y		
LT-1 (08/10)	438,288	1,199,554	27°37'55.66"	82°48'22.47"
DBN-2 (08/10)	437,858	1,201,084	27°38'18.74"	82°48'27.43"
DBN-3 (08/10)	437,715	1,201,051	27°38'18.41"	82°48'26.93"



NOTES:
1. REFER TO SURVEY NO. 10-097.
2. SEE SHEET NO. 1 FOR SURVEY NOTES.



TAMPA BAY

APPROXIMATE SHORELINE

MATCHLINE SHEET NO. 23 STA. 6+00

MATCHLINE SHEET NO. 21 STA. 60+00

CUT SC-3
AZ-117-40-365

CUT SC-2
AZ-155-06-38.4

AIDS TO NAVIGATION	PLANE COORDINATES		LATITUDE	LONGITUDE
	X	Y		
LT-9 (08/18)	435,358	1,286,692	27°39'06.14"	82°48'55.49"
DBN-10 (08/18)	435,494	1,287,158	27°39'18.76"	82°48'54.08"



NOTES:
1. REFER TO SURVEY NO. 10-097.
2. SEE SHEET NO. 1 FOR SURVEY NOTES.

PINELLAS COUNTY
HILLSBOROUGH COUNTY

US Army Corps of Engineers
Jacksonville District

SAFETY ON THIS JOB
DEPENDS ON YOU

DEPARTMENT OF THE ARMY
CORPS OF ENGINEERS
JACKSONVILLE DISTRICT

DESIGNED BY: [blank]
CHECKED BY: [blank]
DATE: [blank]
SCALE: AS SHOWN
PROJECT NO.: [blank]
DRAWING NO.: [blank]
D.O. FILE NO.: [blank]

INTRACOSTAL WATERWAY
CALOOSAHATCHEE RIVER TO ANCLOTE RIVER
EXAMINATION SURVEY FY10
9-FOOT PROJECT
STA. 00+00 CUT SC-2 THRU STA. 6+00 CUT SC-3
PLAN

DRAWING NO.
4/8

SHEET 4 OF 22

TAMPA BAY

US Army Corps of Engineers
Jacksonville District

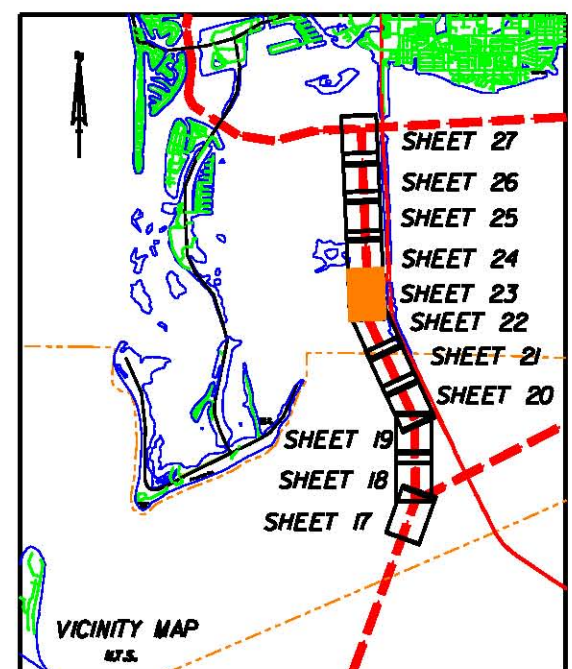
SAFETY ON THIS JOB
DEPENDS ON YOU



MATCHLINE SHEET NO. 24 STA. 36+00

MATCHLINE SHEET NO. 22 STA. 6+00

CUT SC-3
AZ-177-40-365



AIDS TO NAVIGATION	PLANE COORDINATES		LATITUDE	LONGITUDE
	X	Y		
DBN-11 (08/18)	435,271	1,207,827	27°39'17.38"	82°48'56.52"
DBN-12 (08/18)	435,492	1,207,816	27°39'17.27"	82°48'54.06"
DBN-13 (08/18)	435,141	1,218,865	27°39'39.52"	82°48'58.18"
DBN-14 (08/18)	435,365	1,218,844	27°39'39.33"	82°48'55.62"



NOTES:
1. REFER TO SURVEY NO. 10-057.
2. SEE SHEET NO. 1 FOR SURVEY NOTES.

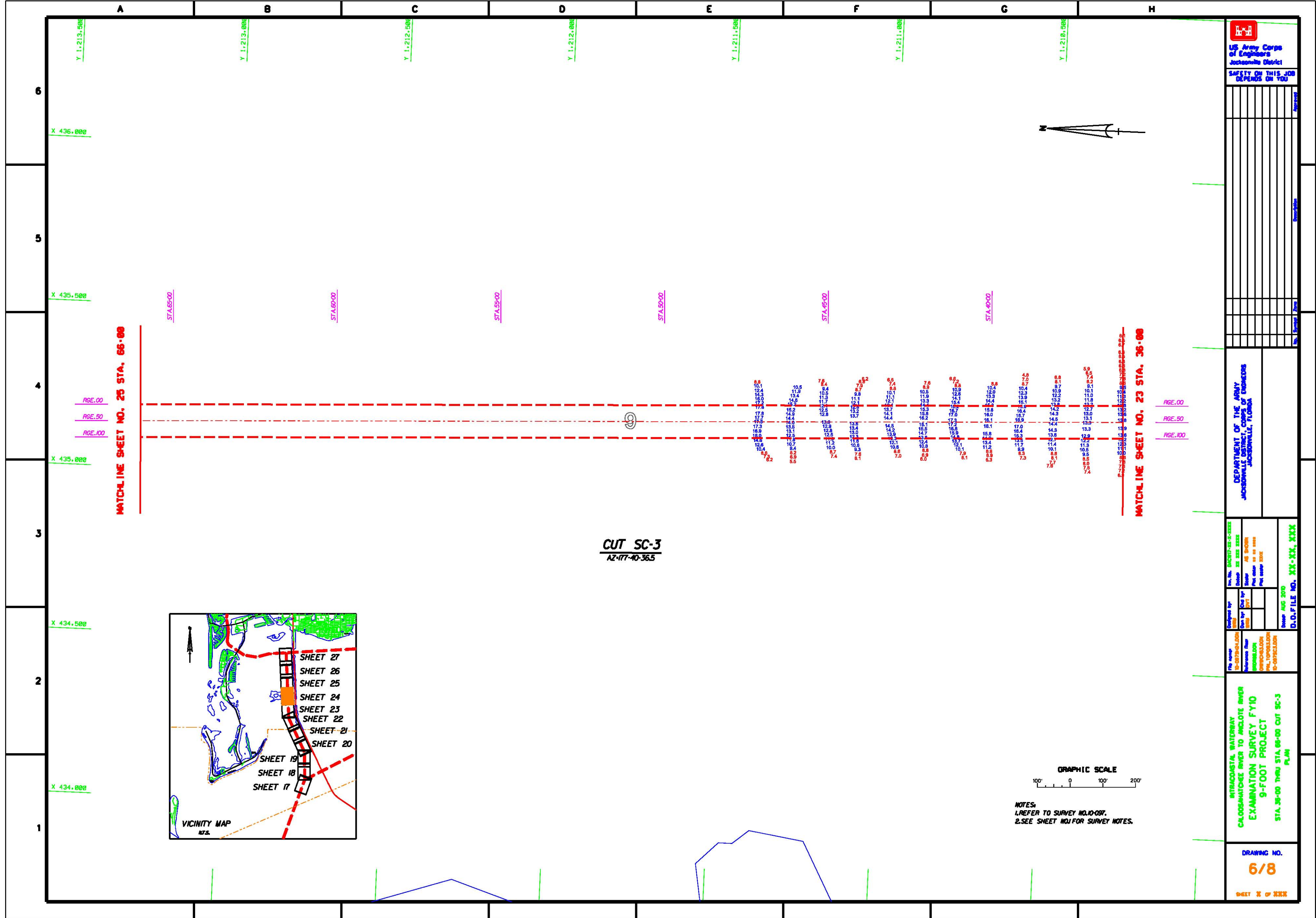
DEPARTMENT OF THE ARMY
JACKSONVILLE DISTRICT

DESIGNED BY: [blank]
CHECKED BY: [blank]
DATE: [blank]
SCALE: AS SHOWN
PROJECT NO.: [blank]
DRAWING NO.: [blank]

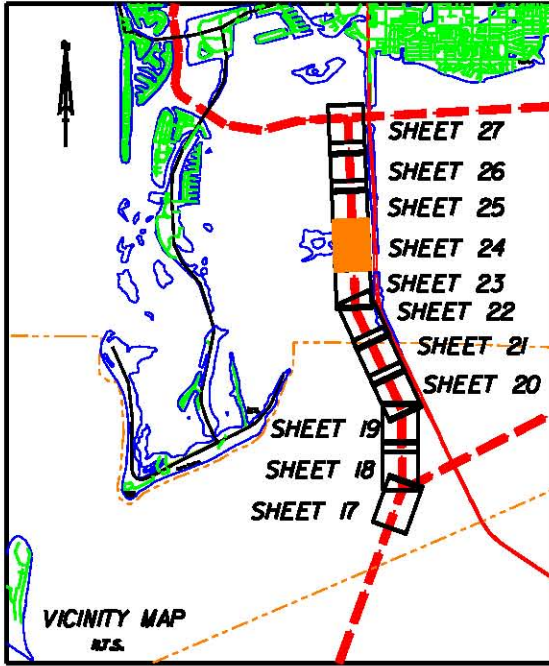
INTRACOSTAL WATERWAY
CALOOSAHATCHEE RIVER TO ANCLOTE RIVER
EXAMINATION SURVEY FY10
9-FOOT PROJECT
STA 6+00 THRU STA 36+00 CUT SC-3
PLAN

DRAWING NO.
5/8

SHEET 8 OF 22X



CUT SC-3
AZ-177-40-365



NOTES:
1. REFER TO SURVEY NO. 10-087.
2. SEE SHEET NO. 1 FOR SURVEY NOTES.

US Army Corps of Engineers
Jacksonville District

SAFETY ON THIS JOB DEPENDS ON YOU

DEPARTMENT OF THE ARMY
Jacksonville District

Designed by: []
Checked by: []
Drawn by: []
Title: []
Date: []
Scale: []
Project: []
Sheet: [] of []

INTRACOSTAL WATERWAY
CALOOSAHATCHEE RIVER TO ANCLOTE RIVER
EXAMINATION SURVEY FY10
9-FOOT PROJECT
STA. 36+00 THRU STA. 66+00 CUT SC-3
PLAN

DRAWING NO.
6/8

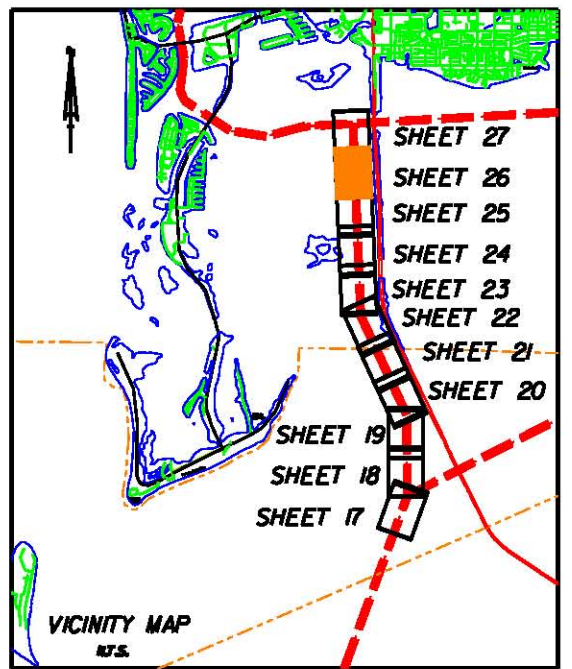
SHEET 6 OF 22X

TAMPA BAY

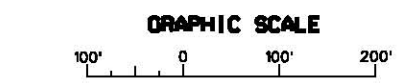
CUT SC-3
AZ-117-40-365

MATCHLINE SHEET NO. 27 STA. 126+00

MATCHLINE SHEET NO. 28 STA. 96+00



AIDS TO NAVIGATION	PLANE COORDINATES		LATITUDE	LONGITUDE
	X	Y		
DBN-23 (88/10)	434,833	1,219,019	27°41'08.17"	82°41'02.08"
DBN-24 (88/10)	434,978	1,219,242	27°41'18.38"	82°41'08.48"



NOTES:
1. REFER TO SURVEY NO. 10-087.
2. SEE SHEET NO. 1 FOR SURVEY NOTES.

US Army Corps of Engineers
Jacksonville District

SAFETY ON THIS JOB
DEPENDS ON YOU

DEPARTMENT OF THE ARMY
CORPS OF ENGINEERS
JACKSONVILLE DISTRICT

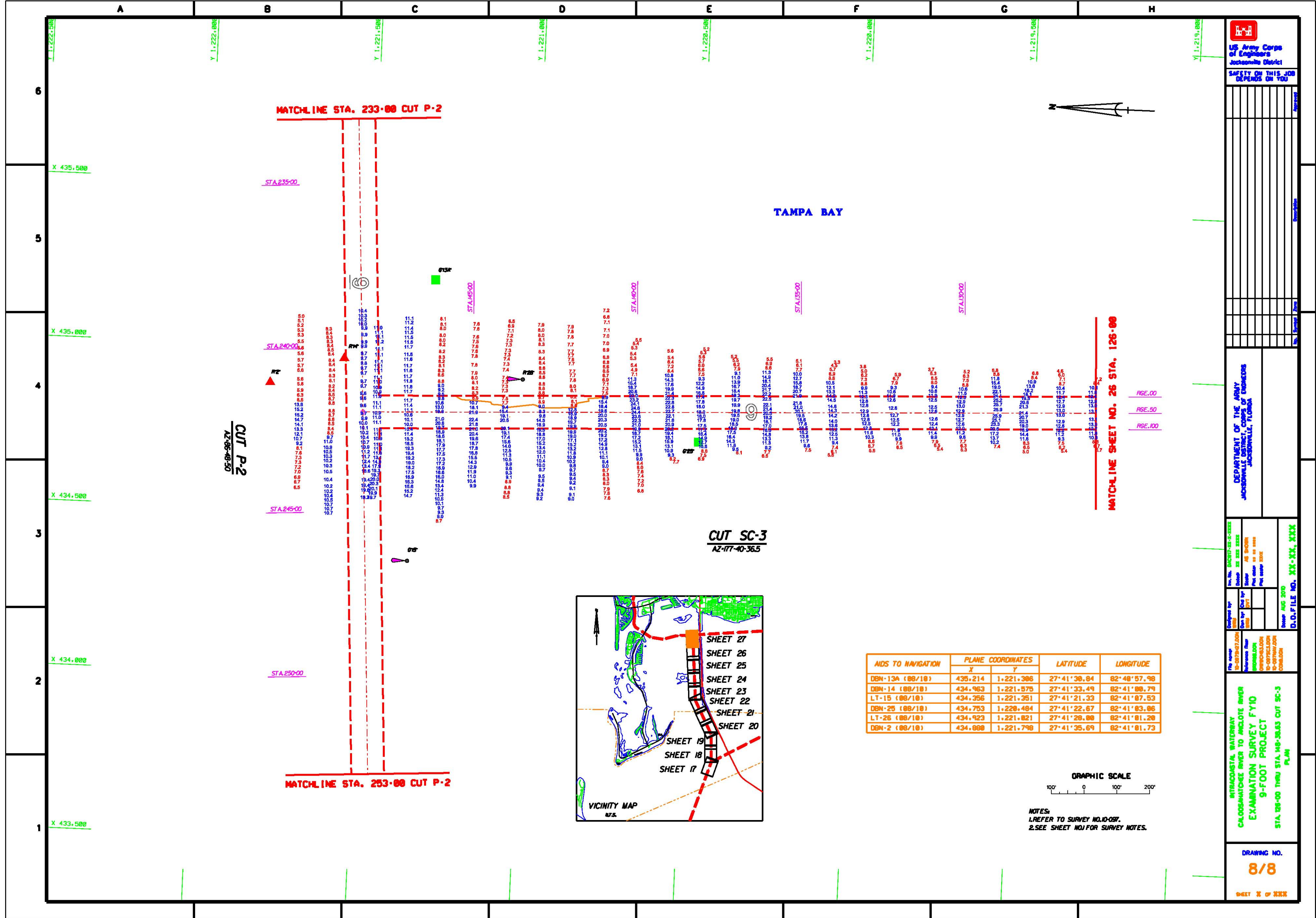
DESIGNED BY: [blank]
CHECKED BY: [blank]
DATE: [blank]

PROJECT NO. 10-087-00-000
DRAWING NO. 7/8

INTRACOSTAL WATERWAY
CALOOSAHATCHEE RIVER TO ANICLOTE RIVER
EXAMINATION SURVEY FY10
9-FOOT PROJECT
STA. 96+00 THRU STA. 126+00 CUT SC-3
PLAN

DRAWING NO.
7/8

SHEET 8 OF 22X



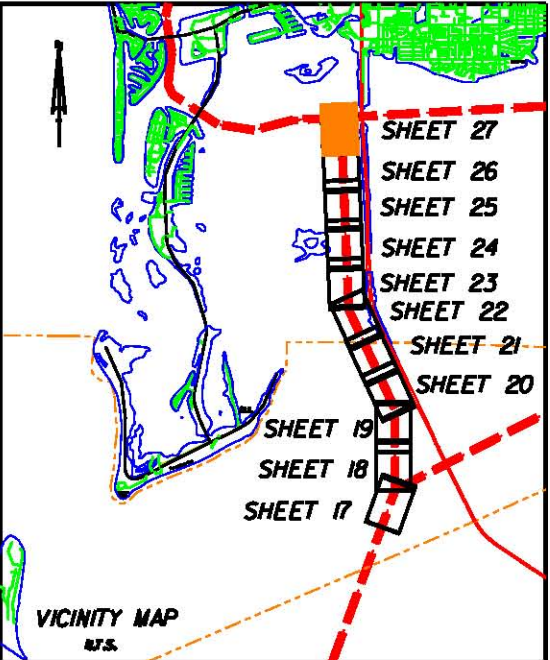
TAMPA BAY

MATCHLINE STA. 233+00 CUT P-2

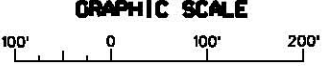
MATCHLINE STA. 253+00 CUT P-2

CUT P-2
AZ-86-49-50

CUT SC-3
AZ-177-40-36.5



AIDS TO NAVIGATION	PLANE COORDINATES		LATITUDE	LONGITUDE
	X	Y		
DBN-13A (08/10)	435,214	1,221,386	27°41'39.84	82°48'57.98
DBN-14 (08/10)	434,963	1,221,576	27°41'33.49	82°41'08.79
LT-15 (08/10)	434,356	1,221,351	27°41'21.33	82°41'07.53
DBN-25 (08/10)	434,753	1,220,484	27°41'22.67	82°41'03.06
LT-26 (08/10)	434,923	1,221,821	27°41'28.00	82°41'01.20
DBN-2 (08/10)	434,888	1,221,798	27°41'35.69	82°41'01.73



NOTES:
1. REFER TO SURVEY NO. 10-087.
2. SEE SHEET NO. J FOR SURVEY NOTES.

US Army Corps of Engineers
Jacksonville District

SAFETY ON THIS JOB
DEPENDS ON YOU

DEPARTMENT OF THE ARMY
JACKSONVILLE DISTRICT

DESIGNED BY: [Name]
CHECKED BY: [Name]
DATE: [Date]

INTRACOSTAL WATERWAY
CALOOSAHATCHEE RIVER TO ANCLOTE RIVER
EXAMINATION SURVEY FY10
9-FOOT PROJECT
STA. 08+00 THRU STA. 148+38.5 CUT SC-3
PLAN

DRAWING NO.
8/8

SHEET 8 OF 22X