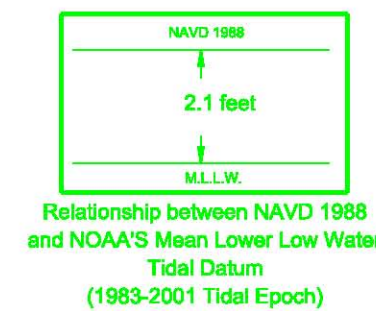


# IWW JACKSONVILLE TO MIAMI, FLORIDA VICINITY OF JUPITER INLET FY10 10-FOOT PROJECT

LEGEND	
• BM	BENCHMARK
⚓	LIGHTED BEACON
■	GREEN DAYBEACON
▲	RED DAYBEACON
⚓	RED LIGHTED BUOY
⚓	GREEN LIGHTED BUOY
⚓	CAN BUOY
⚓	NUN BUOY
⚓	TIDE STAFF
8	PROJECT DEPTH



### SURVEY NOTES:

- REFER TO SURVEY NO. 10-056.
- SOUNDINGS ARE IN FEET AND TENTHS AND REFER TO NOAA'S REPORTED MEAN LOWER LOW WATER (MLLW) RELATIVE TO THE 1983-2001 TIDAL EPOCH.
- ALL ELEVATIONS ARE BELOW THE CHART DATUM UNLESS PRECEDED BY A (+) SIGN.
- TIDAL REDUCTIONS WERE OBTAINED UTILIZING REAL-TIME KINEMATIC GPS WITH A KINEMATIC TIDE DATUM MODEL.
- PLANE COORDINATES ARE BASED ON THE TRANSVERSE MERCATOR PROJECTION FOR THE EAST ZONE OF FLORIDA AND REFERENCED TO NORTH AMERICAN DATUM OF 1983 (NAD83).
- ALL AZIMUTHS ARE GRID; RECKONED CLOCKWISE FROM SOUTH.
- ALL STATIONING REFERS TO THE CENTERLINE OF THE CHANNEL.
- SURVEY WAS PERFORMED USING REAL-TIME KINEMATIC GPS FOR POSITIONING WITH THE FOLLOWING REFERENCE BASE LOCATION:  
\*REFERENCE BASE LOCATED AT "Y 402"

NORTHING: 948,885.10'  
EASTING: 951,470.52'  
NAVD88 ELEVATION: 5.49'

VERTICAL MEASUREMENTS WERE MADE USING A ROSS SMARTSOUNDER DUAL FREQUENCY 28/200 KHZ SINGLE-BEAM TRANSDUCER. ALL DEPTHS SHOWN ARE IN HIGH FREQUENCY.

VESSEL	DATE OF SURVEY	CUT
WB-32	14-15 APR 2010	P-1 THRU P-4

- AIDS TO NAVIGATION WERE LOCATED DURING THIS SURVEY.
- THE INFORMATION DEPICTED ON THIS MAP REPRESENTS THE RESULTS OF SURVEYS MADE ON THE DATES INDICATED ABOVE AND CAN ONLY BE CONSIDERED AS INDICATING THE GENERAL CONDITIONS AT THAT TIME. THIS CHART IS SOLELY FOR THE DISTRIBUTION OF AVAILABLE DEPTHS AT THE TIME OF THE SURVEY AND IS NOT TO BE USED FOR NAVIGATION.
- SURVEY ACCURACY STANDARDS, QUALITY CONTROL, AND QUALITY ASSURANCE REQUIREMENTS WERE FOLLOWED DURING THIS SURVEY IN ACCORDANCE WITH USACE EM 1110-2-1003, HYDROGRAPHIC SURVEYING, 1 JAN 02.

US Army Corps of Engineers  
Jacksonville District  
SAFETY ON THIS JOB  
DEPENDS ON YOU

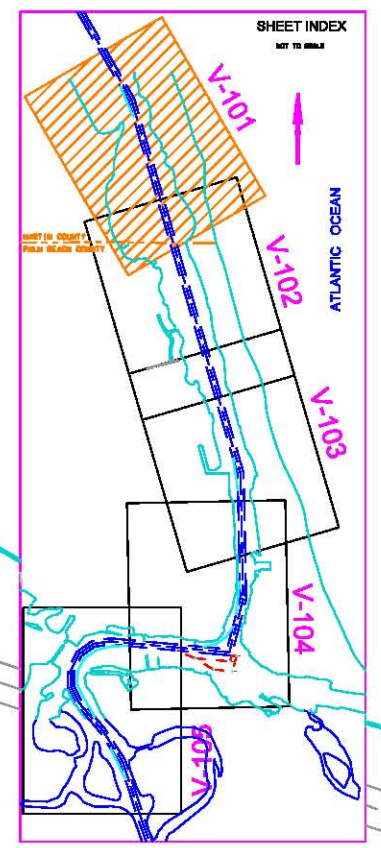
DEPARTMENT OF THE ARMY  
JACKSONVILLE DISTRICT, CORPS OF ENGINEERS  
JACKSONVILLE, FLORIDA

PROJECT NO. 10-056  
DRAWING NO. 10-056-1003  
DATE: 10/20/09  
BY: JLM/STP  
CHECKED: JLM/STP  
APPROVED: JLM/STP

IWW JACKSONVILLE TO MIAMI, FLORIDA  
VICINITY OF JUPITER INLET  
PALM BEACH COUNTY  
FY10  
10-FOOT PROJECT  
INDEX, VICINITY & LOCATION  
PLAN

Scale: AS SHOWN  
Drawing no. 1

# ATLANTIC OCEAN



AIDS TO NAVIGATION	PLANE COORDINATES		LATITUDE	LONGITUDE
	X	Y		
DBN-52 (84/18)	953.873	952.391	26°59'42.18"	89°05'09.38"
LT. BUDY-53 (84/18)	954.815	952.489	26°59'43.14"	89°05'07.72"
DBN-54 (84/18)	954.153	951.528	26°59'33.53"	89°05'06.27"

NOTES  
1. REFER TO SURVEY 10-056.  
2. SEE SHEET NO.1 FOR SURVEY NOTES.

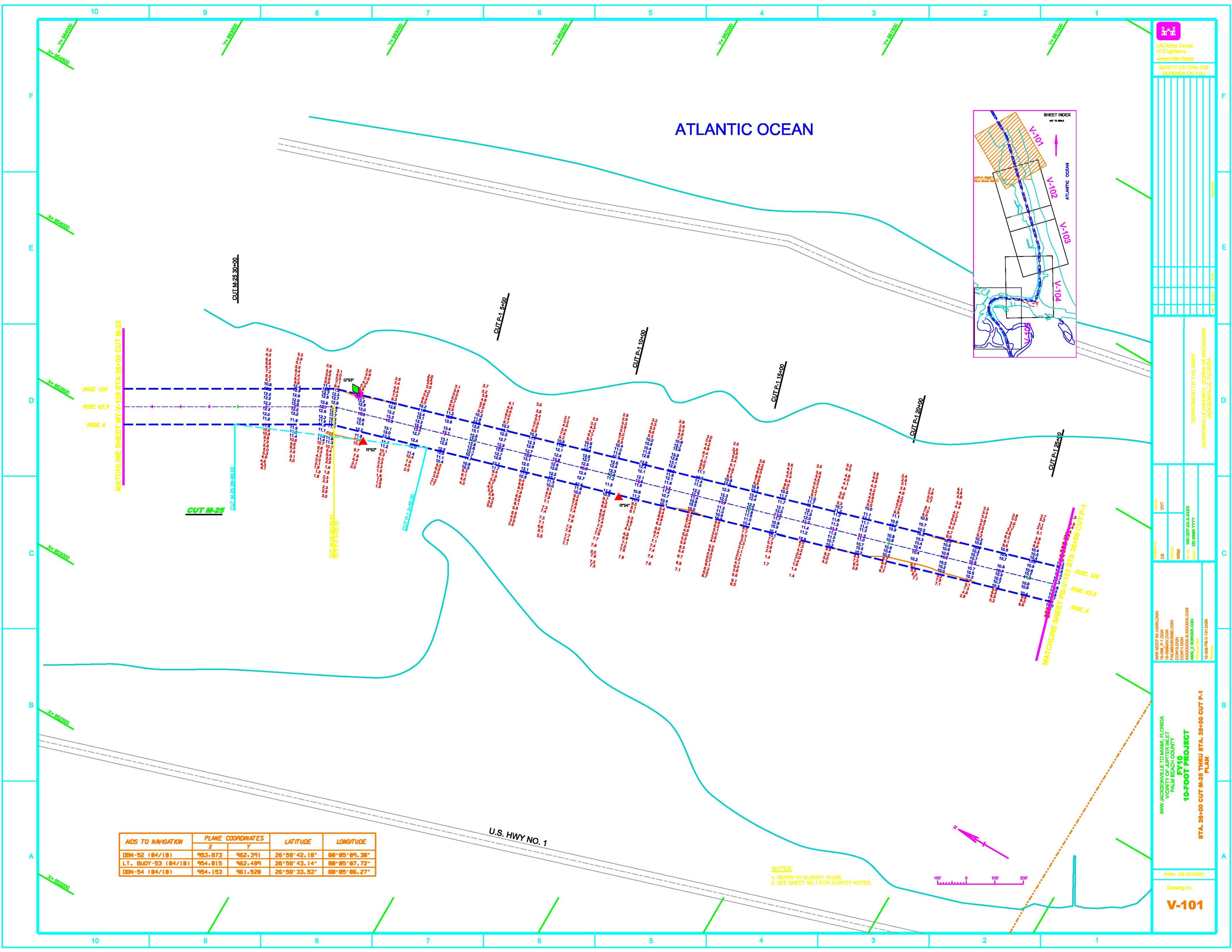


DEPARTMENT OF THE ARMY  
JACKSONVILLE DISTRICT, CORPS OF ENGINEERS  
JACKSONVILLE, FLORIDA

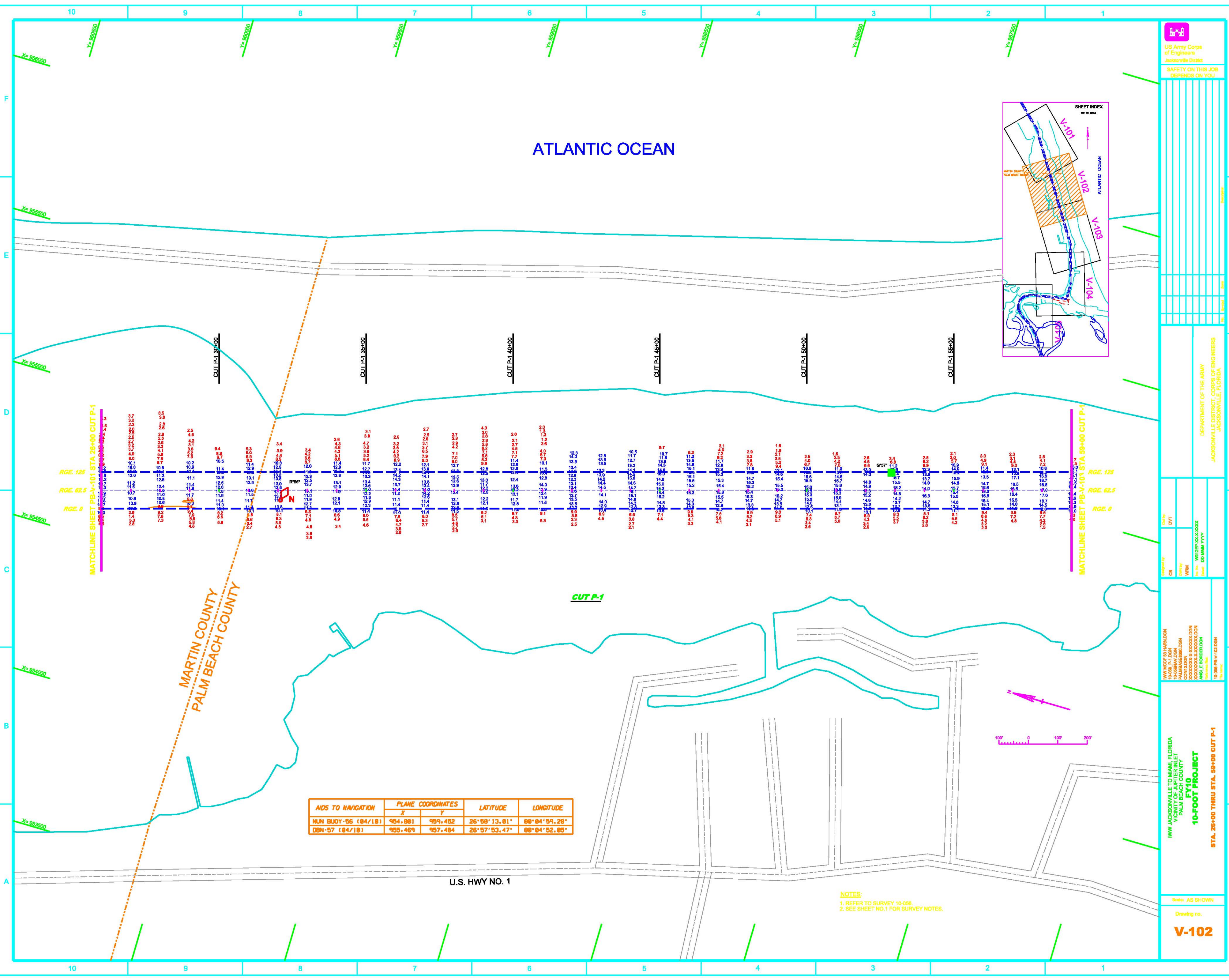
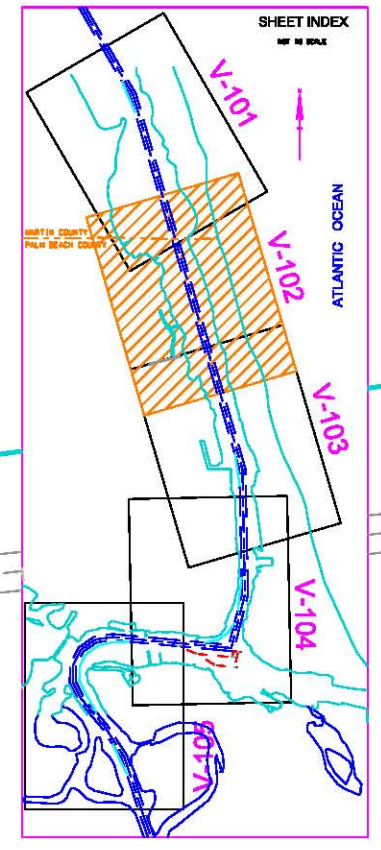
WWW.MCOTRIS.HAWKLOAN  
10-056.P.1.DGN  
CONTRIBUTOR  
PALM BEACH COUNTY  
XXXXXXXXXXXXXXXXXXXX  
ANBL LE BORTERLOAN  
10-056-PRM-101.DGN

IWW JACKSONVILLE TO MIAMI, FLORIDA  
VIA PALM BEACH COUNTY  
FY10  
10-FOOT PROJECT  
STA. 28+00 CUT M-25 THRU STA. 28+00 CUT P-1  
PLAN

Scale: AS SHOWN  
Drawing no.  
**V-101**



# ATLANTIC OCEAN



MARTIN COUNTY  
PALM BEACH COUNTY

AIDS TO NAVIGATION	PLANE COORDINATES		LATITUDE	LONGITUDE
	X	Y		
NUN BUOY-56 (84/18)	954,881	959,452	26°58'13.81"	80°04'59.28"
DBN-57 (84/18)	955,469	957,484	26°57'53.47"	80°04'52.85"

U.S. HWY NO. 1

NOTES:  
1. REFER TO SURVEY 10-056.  
2. SEE SHEET NO.1 FOR SURVEY NOTES.

DEPARTMENT OF THE ARMY  
JACKSONVILLE DISTRICT, CORPS OF ENGINEERS  
JACKSONVILLE, FLORIDA

Drawn by: DVT  
Checked by: WRM  
Title: WILSON PALM BEACH COUNTY  
Model: JD MIM VVVV

WWW MDTF IS HAWKLOON  
10-056 P-1.DGN  
PALM BEACH COUNTY  
CONTRIBUTOR: JACKSONVILLE DISTRICT  
XXXXXXXXXXXXXXXXXXXX  
ANBL LE BORTERLOON  
10-056-PR-1-102.DGN

WWW JACKSONVILLE TO MIAMI, FLORIDA  
V-102  
PALM BEACH COUNTY  
FY10  
10-FOOT PROJECT  
STA. 26+00 THRU STA. 59+00 CUT P-1

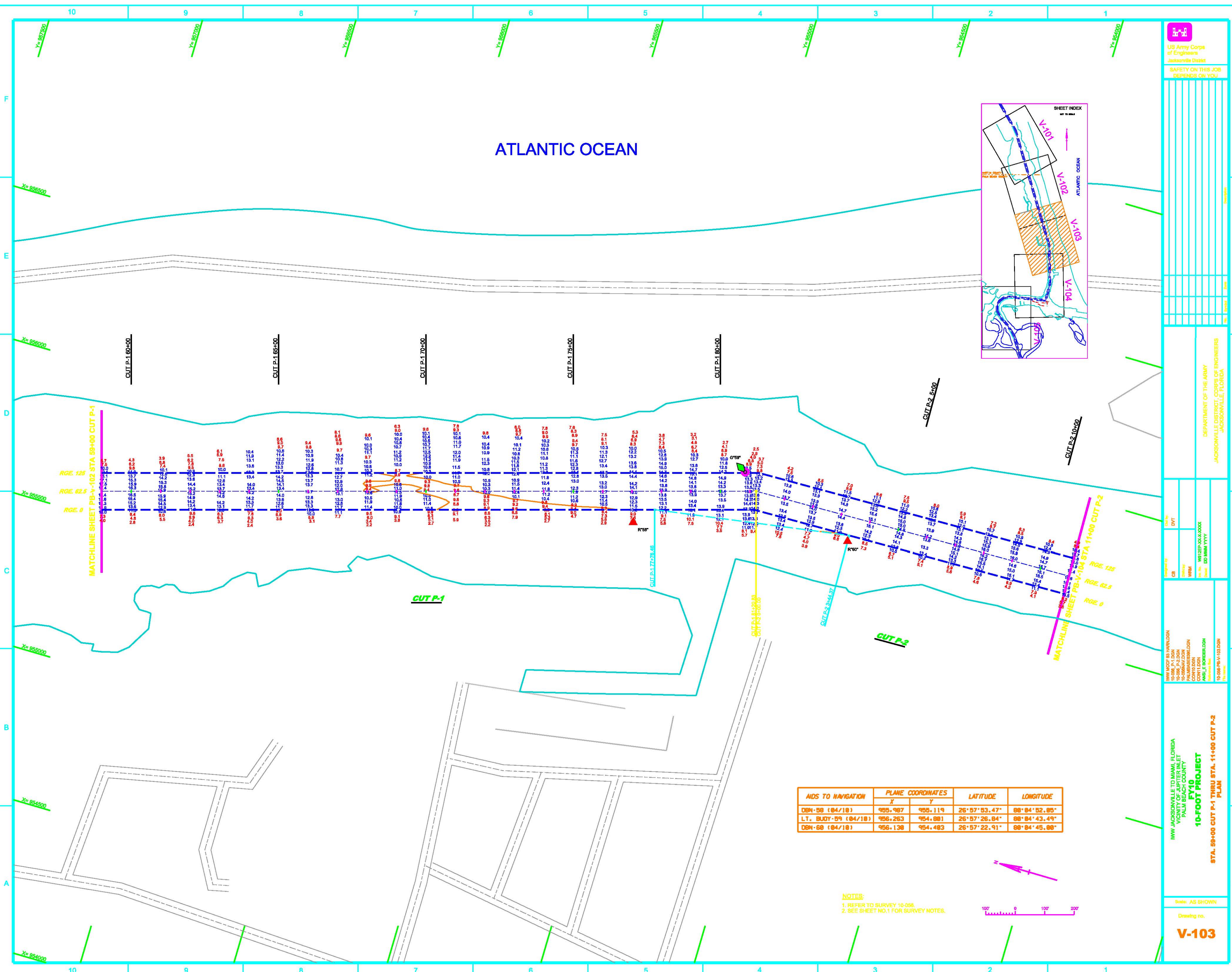
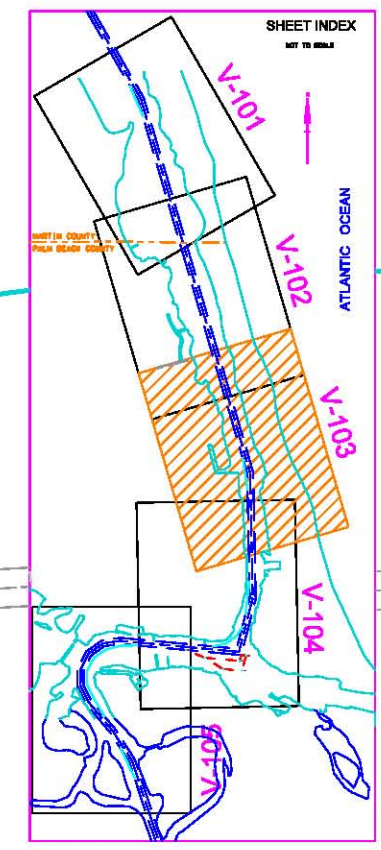
Scale: AS SHOWN  
Drawing no.  
**V-102**



US Army Corps of Engineers  
Jacksonville District

SAFETY ON THIS JOB  
DEPENDS ON YOU

# ATLANTIC OCEAN



MATCHLINE SHEET PB-1-102 STA 59+00 CUT P-1

MATCHLINE SHEET PB-1-101 STA 11+00 CUT P-2

AIDS TO NAVIGATION	PLANE COORDINATES		LATITUDE	LONGITUDE
	X	Y		
DBN-58 (04/18)	955.987	955.119	26°57'53.47"	88°04'52.85"
L.T. BUOY-59 (04/18)	956.263	954.881	26°57'26.84"	88°04'43.49"
DBN-68 (04/18)	956.138	954.483	26°57'22.91"	88°04'45.88"

**NOTES:**  
1. REFER TO SURVEY 10-056.  
2. SEE SHEET NO.1 FOR SURVEY NOTES.



DEPARTMENT OF THE ARMY  
JACKSONVILLE DISTRICT, CORPS OF ENGINEERS  
JACKSONVILLE, FLORIDA

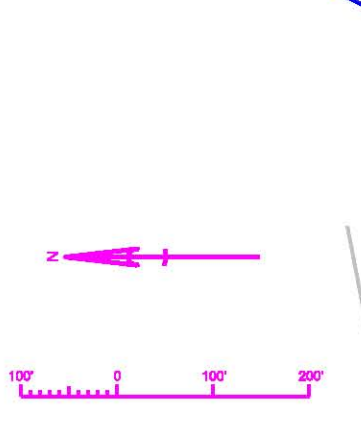
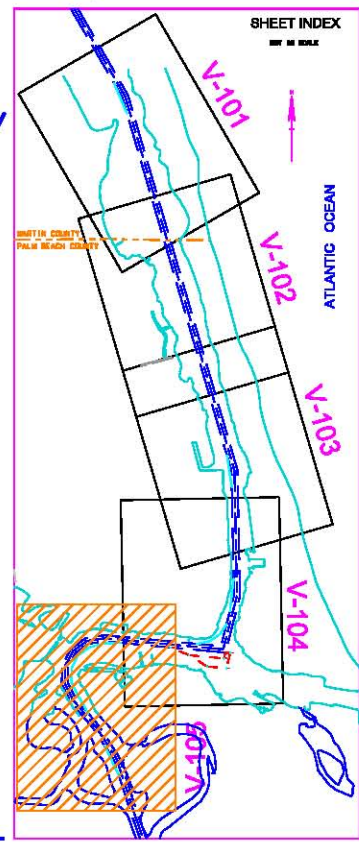
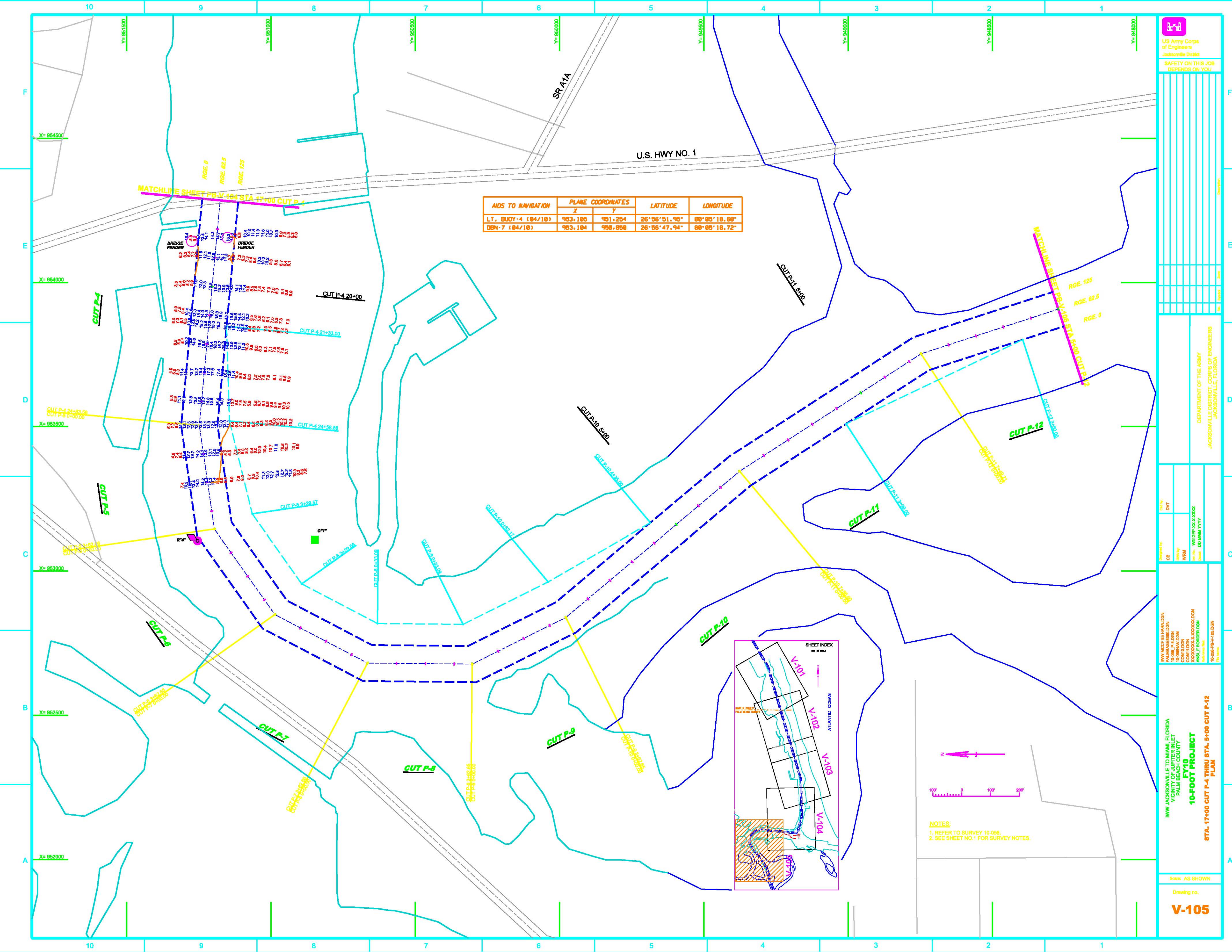
DESIGNED BY: DVT  
CHECKED BY: WRM  
DRAWN BY: WLS  
DATE: 10-05-10  
PROJECT NO: 10-056-PR-1-103

10-056-PR-1-103  
10-056-PR-1-103.DWG  
10-056-PR-1-103.DWG

Scale: AS SHOWN  
Drawing no.  
**V-103**



AIDS TO NAVIGATION	PLANE COORDINATES		LATITUDE	LONGITUDE
	X	Y		
LT. BUOY-4 (84/18)	953.185	951.254	26°56'51.95"	80°05'18.68"
DBN-7 (84/18)	953.184	950.858	26°56'47.94"	80°05'18.72"



NOTES:  
1. REFER TO SURVEY 10-056.  
2. SEE SHEET NO.1 FOR SURVEY NOTES.

DEPARTMENT OF THE ARMY  
JACKSONVILLE DISTRICT, CORPS OF ENGINEERS  
JACKSONVILLE, FLORIDA

Checked By: DVT  
Designed By: CB  
Reviewed By: WRM  
Author: WJL/SER/SA/COOK  
Model: JD/IMM/VVV

100% HAWK LOGN  
PALM BEACH COUNTY  
CONTRON  
ANGL E BORTER LOGN  
10-056-PR-105.DGN

100% HAWK LOGN  
PALM BEACH COUNTY  
CONTRON  
ANGL E BORTER LOGN  
10-056-PR-105.DGN

**10-FOOT PROJECT**  
**10-056-PR-105**  
**PLAN**

Scale: AS SHOWN  
Drawing no.  
**V-105**