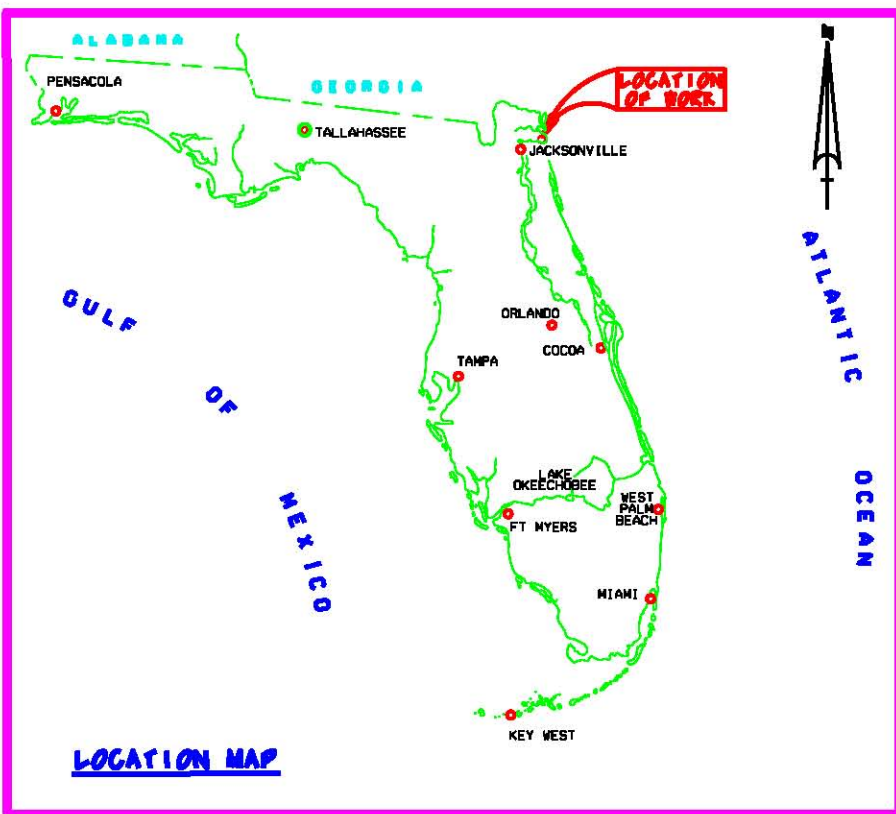


ATLANTIC INTRACOASTAL WATERWAY FERNANDINA TO ST. JOHNS RIVER, FLORIDA EXAMINATION SURVEY



SURVEY NOTES:

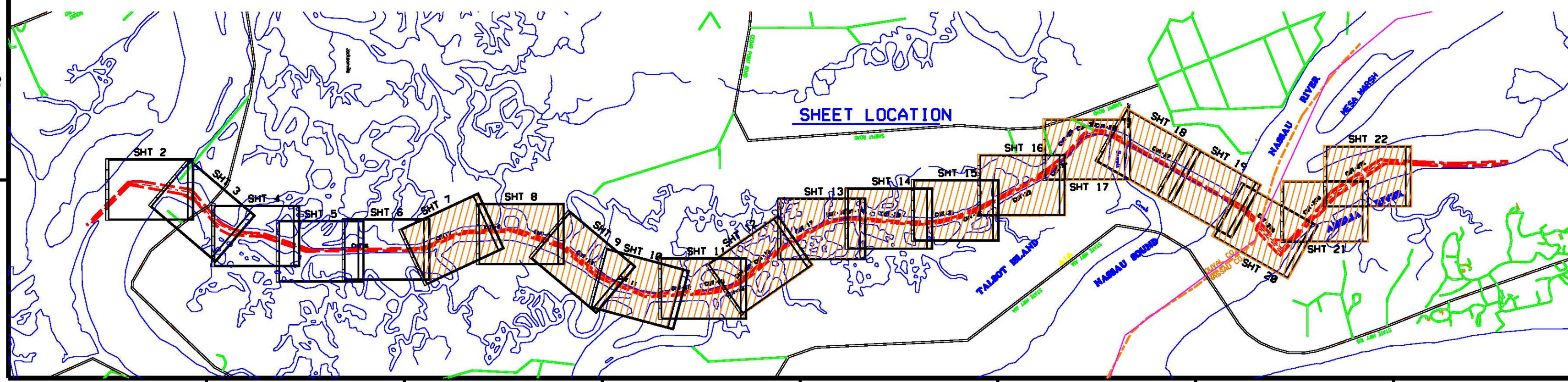
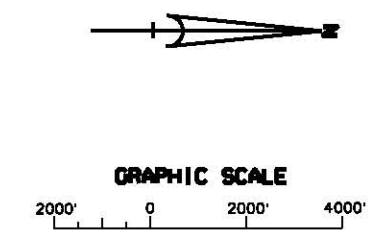
- 1. REFER TO SURVEY NO. 04-038.
- 2. ELEVATIONS ARE IN FEET AND TENTHS AND REFER TO NOAA'S REPORTED MEAN LOWER LOW WATER (MLLW) OF THE 1983-2001 TIDAL EPOCH.
- 3. ALL ELEVATIONS ARE BELOW THE CHART DATUM UNLESS PRECEDED BY A '1530'.
- 4. TIDAL REDUCTIONS WERE MADE OBTAINING REAL-TIME KINEMATIC TIDE DATUM MODEL.
- 5. PLANE COORDINATES ARE BASED ON THE TRANSVERSE MERCATOR PROJECTION FOR THE EAST ZONE OF FLORIDA AND REFERENCED TO NORTH AMERICAN DATUM OF 1983 (NAD83).
- 6. ALL AZIMUTHS ARE QUADRANTED CLOCKWISE FROM SOUTH.
- 7. ALL STATIONING REFERS TO THE CENTERLINE OF THE CHANNEL.
- 8. SURVEY WAS PERFORMED USING REAL-TIME KINEMATIC GPS POSITIONING WITH THE FOLLOWING REFERENCE BASE LOCATIONS:
 - REFERENCE BASE LOCATED AT 'STARK' FOR CUTS 7 THRU 18
 - NORTHING: 2204570.44'
 - EASTING: 328493.78'
 - NAVD83 ELEVATION: 8.47'
 - REFERENCE BASE LOCATED AT 'N 326' FOR CUTS 19 THRU 27C
 - NORTHING: 2204610.47'
 - EASTING: 328493.78'
 - NAVD83 ELEVATION: 12.48'
 - REFERENCE BASE LOCATED AT 'W2 OBS D TIDAL'
 - NORTHING: 2204610.47'
 - EASTING: 328493.78'
 - NAVD83 ELEVATION: 12.48'
 - MLLW ELEVATION: 20.52'
 - REFERENCE BASE LOCATED AT 'W2 OBS A TIDAL'
 - NORTHING: 2204610.47'
 - EASTING: 328493.78'
 - NAVD83 ELEVATION: 12.48'
 - MLLW ELEVATION: 18.52'

- VERTICAL MEASUREMENTS WERE MADE USING A ROSS SHARP SOUNDER DUAL FREQUENCY 80/120MHZ SINGLE-BEAM TRANSDUCER SOUNDINGS SHOWN IN THIS SURVEY ARE REPORTED IN HIGH FREQUENCY 1800HZ.
- SLANDS TO NAVIGATION WERE LOCATED DURING THIS SURVEY.
- ALL THE INFORMATION DEPICTED ON THIS MAP REPRESENTS THE RESULTS OF SURVEYS MADE ON THE DATES INDICATED ABOVE AND CAN ONLY BE CONSIDERED AS INDICATING THE GENERAL CONDITIONS AT THAT TIME. THIS CHART IS SOLELY FOR THE DISTRIBUTION OF AVAILABLE DEPTHS AT THE TIME OF THE SURVEY AND IS NOT TO BE USED FOR NAVIGATION.
- ALL SURVEY ACCURACY PERFORMANCE STANDARDS, QUALITY CONTROL, AND QUALITY ASSURANCE REQUIREMENTS WERE FOLLOWED DURING THIS SURVEY IN ACCORDANCE WITH USACE EM 110-2-2003, HYDROGRAPHIC SURVEYING, JAN 03.

VESSEL	AREA SURVEYED	DATE SURVEYED	BENCHMARK
W2-32	CUTS 7 THRU 9	28 JAN 19	STARK
W2-32	CUT 27A THRU 27C	29 JAN 19	N 326
W2-32	CUT 22 THRU 27	31 FEB 19	N 326
W2-32	CUT 18 THRU 21	02 FEB 19	N 326-STARK

LEGEND	
+BM	BENCHMARK
⬮	LIGHTED BEACON
⬮	GREEN DAYBEACON
⬮	RED DAYBEACON
⬮	RED LIGHTED BUOY
⬮	GREEN LIGHTED BUOY
⬮	CHM BUOY
⬮	MIN BUOY
⬮	TIDE STAFF

BENCHMARK	NAVD ELEV (FT)
STARK	8.47
8728137D TIDAL	17.15
8728818A TIDAL	8.22
N 326	12.48



US Army Corps of Engineers
 Jacksonville District
 SAFETY ON THIS JOB DEPENDS ON YOU

DEPARTMENT OF THE ARMY
 JACKSONVILLE DISTRICT OF ENGINEERS
 JACKSONVILLE, FLORIDA

Project No. 140377-01-0-0000
 Contract No. W91279-01-2-0000
 Task Order No. 01
 Drawn By: [Name]
 Checked By: [Name]
 Date: [Date]
 Scale: AS SHOWN
 Plot Date: [Date]
 Plot Scale: [Scale]

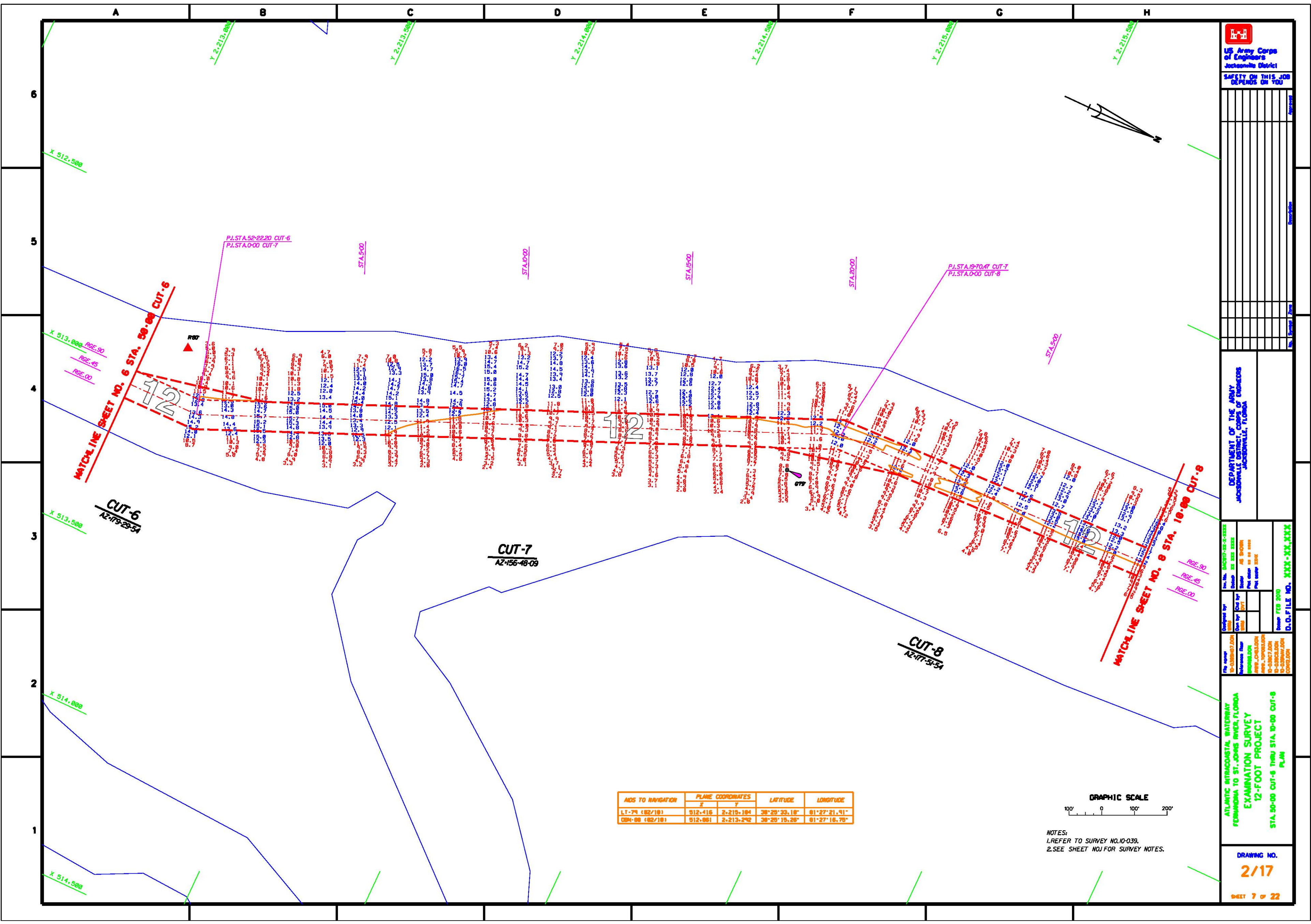
Project: ATLANTIC INTRACOASTAL WATERWAY
 FERNANDINA TO ST. JOHNS RIVER, FLORIDA
 EXAMINATION SURVEY
 12-FOOT PROJECT
 SHEET LOCATION AND VICINITY MAP
 CUTS 7-27C

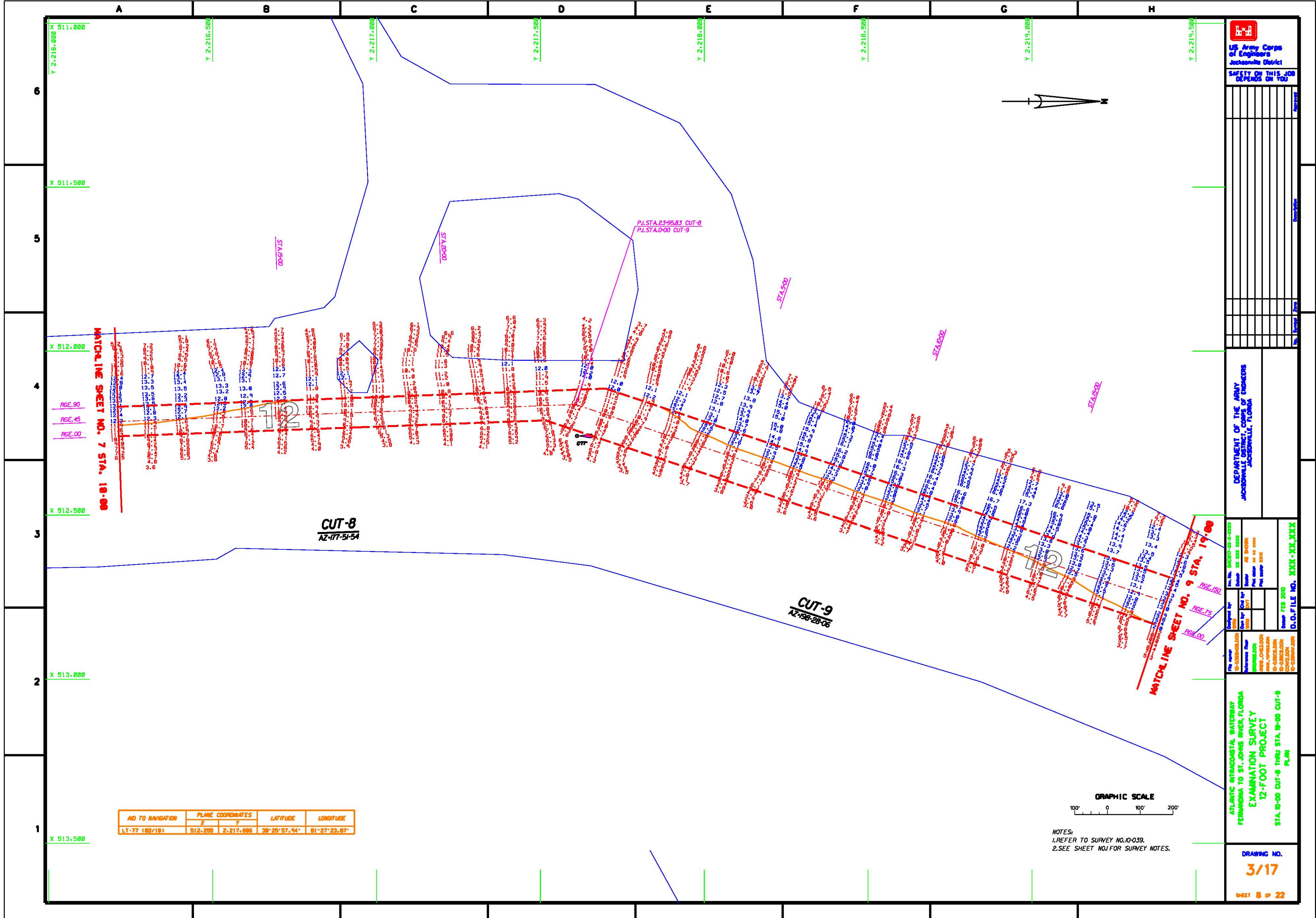
DRAWING NO.
1/17
 SHEET 1 OF 22



NOTES:
1. REFER TO SURVEY NO. 10-039.
2. SEE SHEET NO. J FOR SURVEY NOTES.

AIDS TO NAVIGATION	PLANE COORDINATES		LATITUDE	LONGITUDE
	X	Y		
L.T. 74 (82/10)	912-416	2-215-104	30°29'33.18"	01°27'21.91"
OB-08 (02/10)	912-061	2-213-292	30°29'15.28"	01°27'16.70"





NO TO NAVIGATION	PLANE COORDINATES		LATITUDE	LONGITUDE
	X	Y		
LT-77 (182/18)	512.200	2,217.886	38°20'07.94"	81°27'23.87"



NOTES:
 1. REFER TO SURVEY NO. 10-039.
 2. SEE SHEET NO. J FOR SURVEY NOTES.

US Army Corps of Engineers
 Jacksonville District

SAFETY ON THIS JOB
 DEPENDS ON YOU

DEPARTMENT OF THE ARMY
 JACKSONVILLE DISTRICT

Project No. 10-039-182-18
 Date 10/18/06
 Scale 1" = 100'
 Project Name ATLANTIC INTRACOSTAL WATERWAY
 FROM ST. JOHN'S RIVER, FLORIDA
 TO ST. AUGUSTINE, FLORIDA
 EXAMINATION SURVEY
 12-FOOT PROJECT
 STA. 0+00 CUT-8 THRU STA. 19+00 CUT-9
 PLAN

ATLANTIC INTRACOSTAL WATERWAY
 FROM ST. JOHN'S RIVER, FLORIDA
 TO ST. AUGUSTINE, FLORIDA
 EXAMINATION SURVEY
 12-FOOT PROJECT
 STA. 0+00 CUT-8 THRU STA. 19+00 CUT-9
 PLAN

DRAWING NO.
3/17

SHEET 8 OF 22

U.S. Army Corps of Engineers
Jacksonville District
SAFETY ON THIS JOB
DEPENDS ON YOU

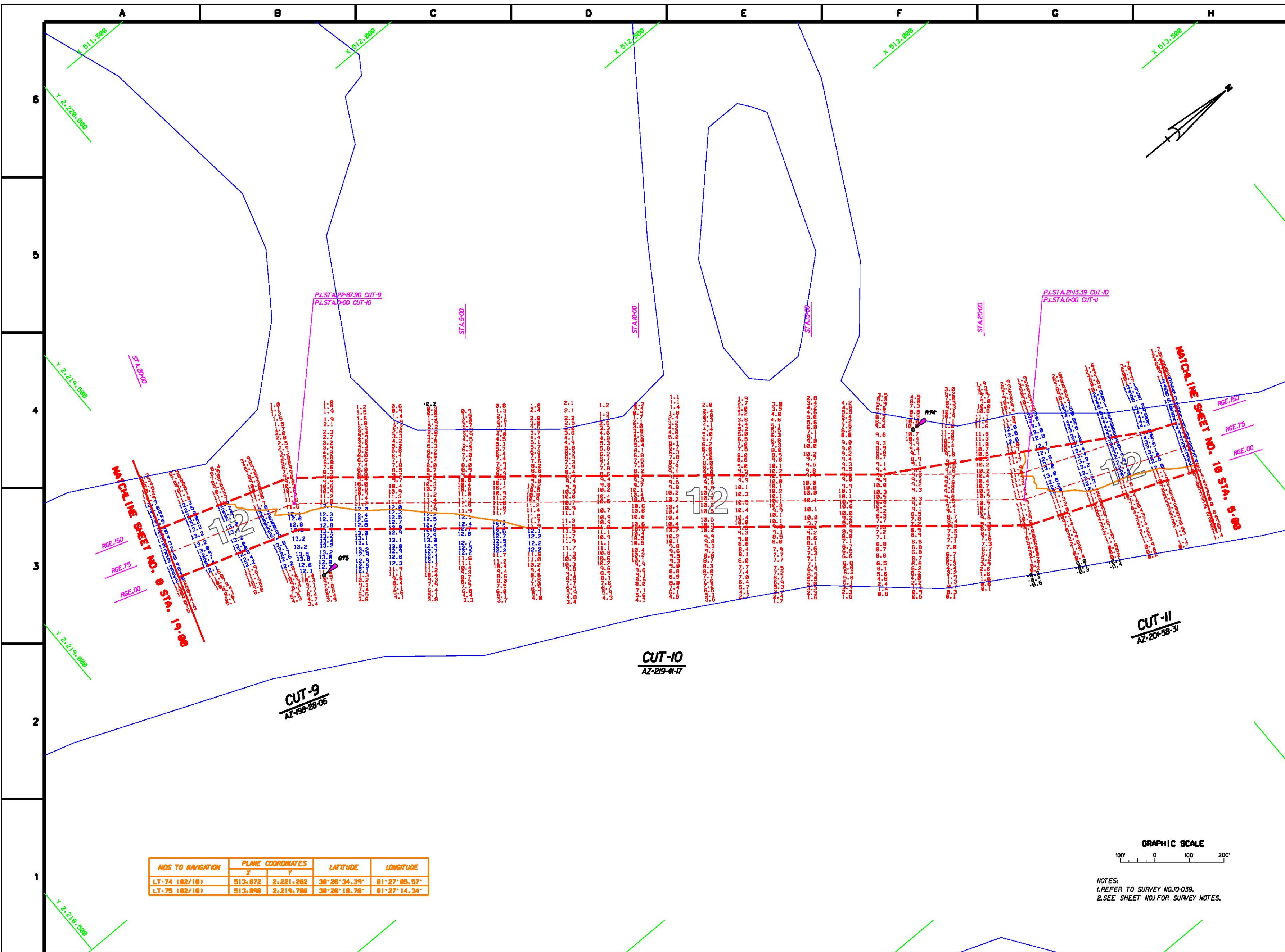
DEPARTMENT OF THE ARMY
Jacksonville District

Drawn by: **10-3878-B-E-0226**
 Date: **10/12/10**
 Scale: **AS SHOWN**
 Date by: **10-3878**
 Scale: **AS SHOWN**
 Date by: **10-3878**
 Scale: **AS SHOWN**

Drawn by: **10-3878**
 Date: **10/12/10**
 Scale: **AS SHOWN**
 Date by: **10-3878**
 Scale: **AS SHOWN**

ATLANTIC INTRACOASTAL WATERWAY
FERROVIA TO ST. JOHNS RIVER, FLORIDA
EXAMINATION SURVEY
12-FOOT PROJECT
STA. 9-00 CUT-9 THRU STA. 5-00 CUT-11
PLAN

DRAWING NO.
4/17
SHEET 9 of 22



GRAPHIC SCALE
 100' 0 100' 200'

NOTES:
 1. REFER TO SURVEY NO. 10-039.
 2. SEE SHEET NO. J FOR SURVEY NOTES.

AIDS TO NAVIGATION	PLANE COORDINATES		LATITUDE	LONGITUDE
	X	Y		
LT-74 (82/18)	513.972	2,221,282	38°26'34.39"	81°27'08.97"
LT-75 (82/18)	513.998	2,219,786	38°26'18.76"	81°27'14.34"

AIDS TO NAVIGATION	PLANE COORDINATES	LATITUDE	LONGITUDE
LT-73 (82/18)	514.492 2,223,877	39°28'58.14"	81°28'53.24"
DBR-73 (82/18)	514.871 2,223,978	39°28'47.28"	81°28'54.22"

US Army Corps of Engineers
Jacksonville District

SAFETY ON THIS JOB
DEPENDS ON YOU

DEPARTMENT OF THE ARMY
JACKSONVILLE DISTRICT

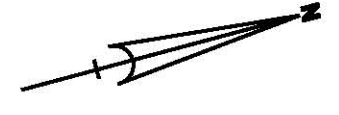
Designed by: [blank]
Checked by: [blank]
Drawn by: [blank]
Plot date: [blank]
Plot scale: [blank]

File name: [blank]
Project: [blank]
Location: [blank]
Scale: [blank]

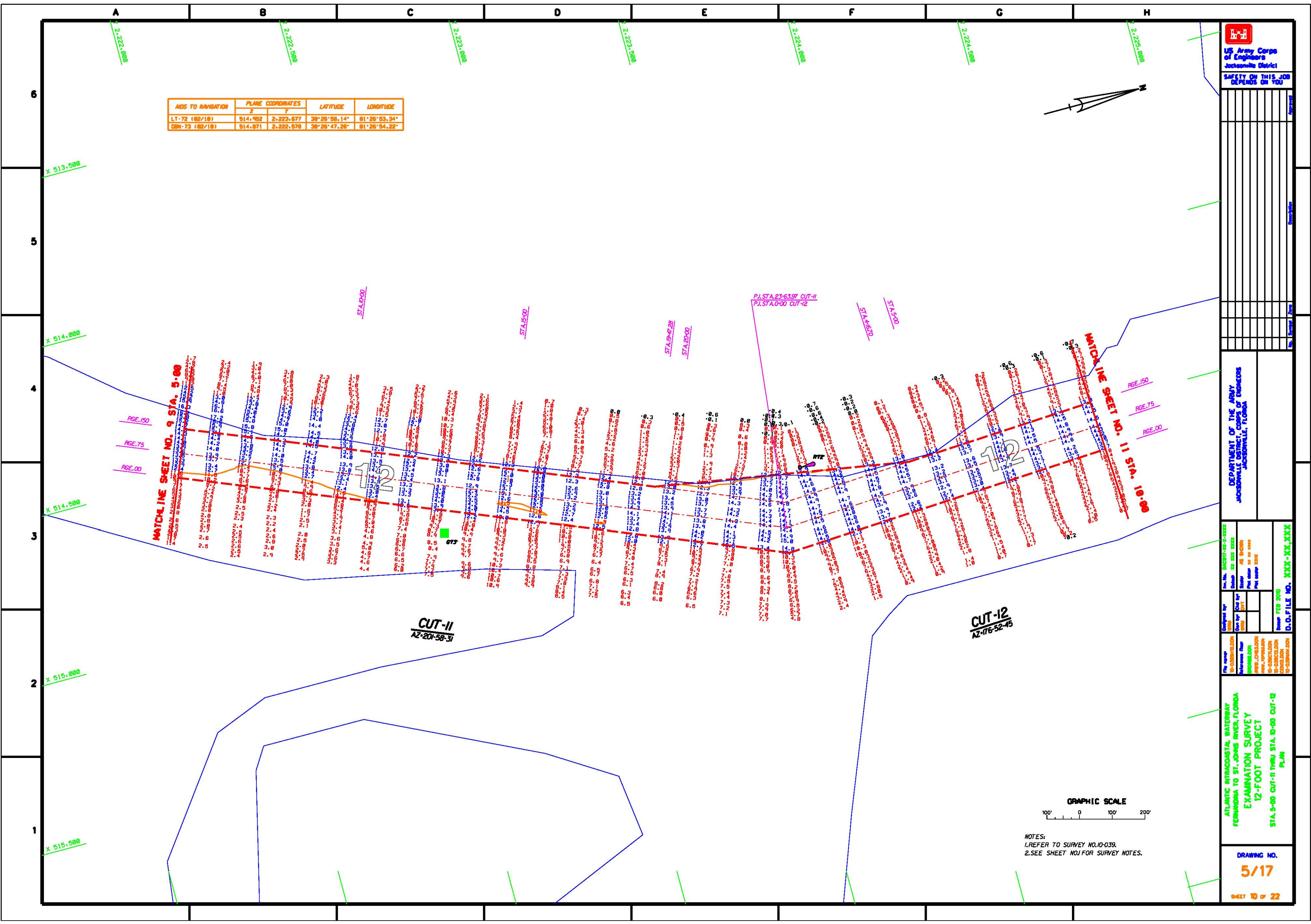
ATLANTIC INTRACOSTA WATERWAY
FERROVIA TO ST. JOHN'S RIVER, FLORIDA
EXAMINATION SURVEY
12-FOOT PROJECT
STA. 5+00 CUT-II thru STA. 10+00 CUT-I
PLAN

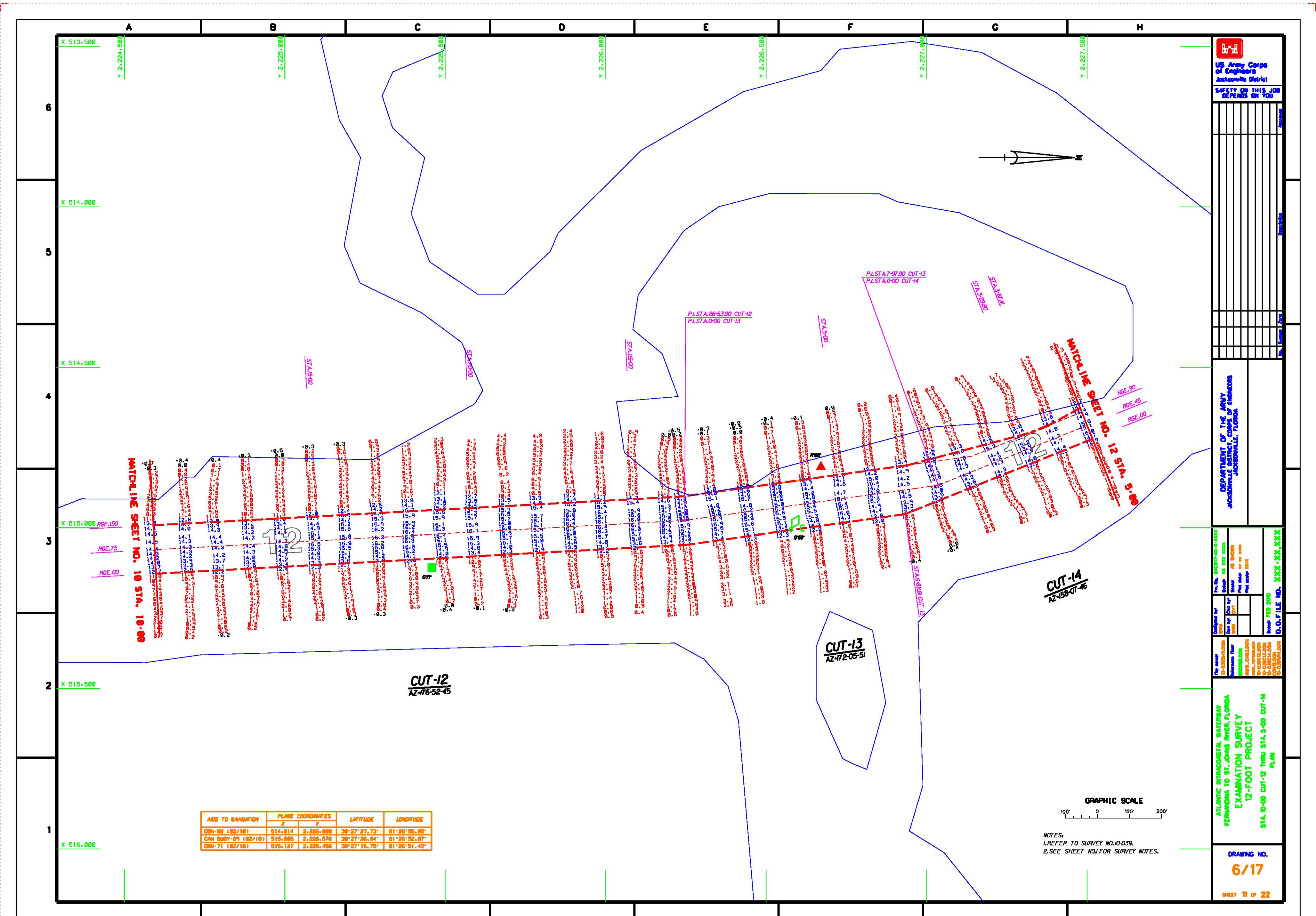
DRAWING NO.
5/17

SHEET 10 of 22



NOTES:
1. REFER TO SURVEY NO. 10-039.
2. SEE SHEET NO. 1 FOR SURVEY NOTES.



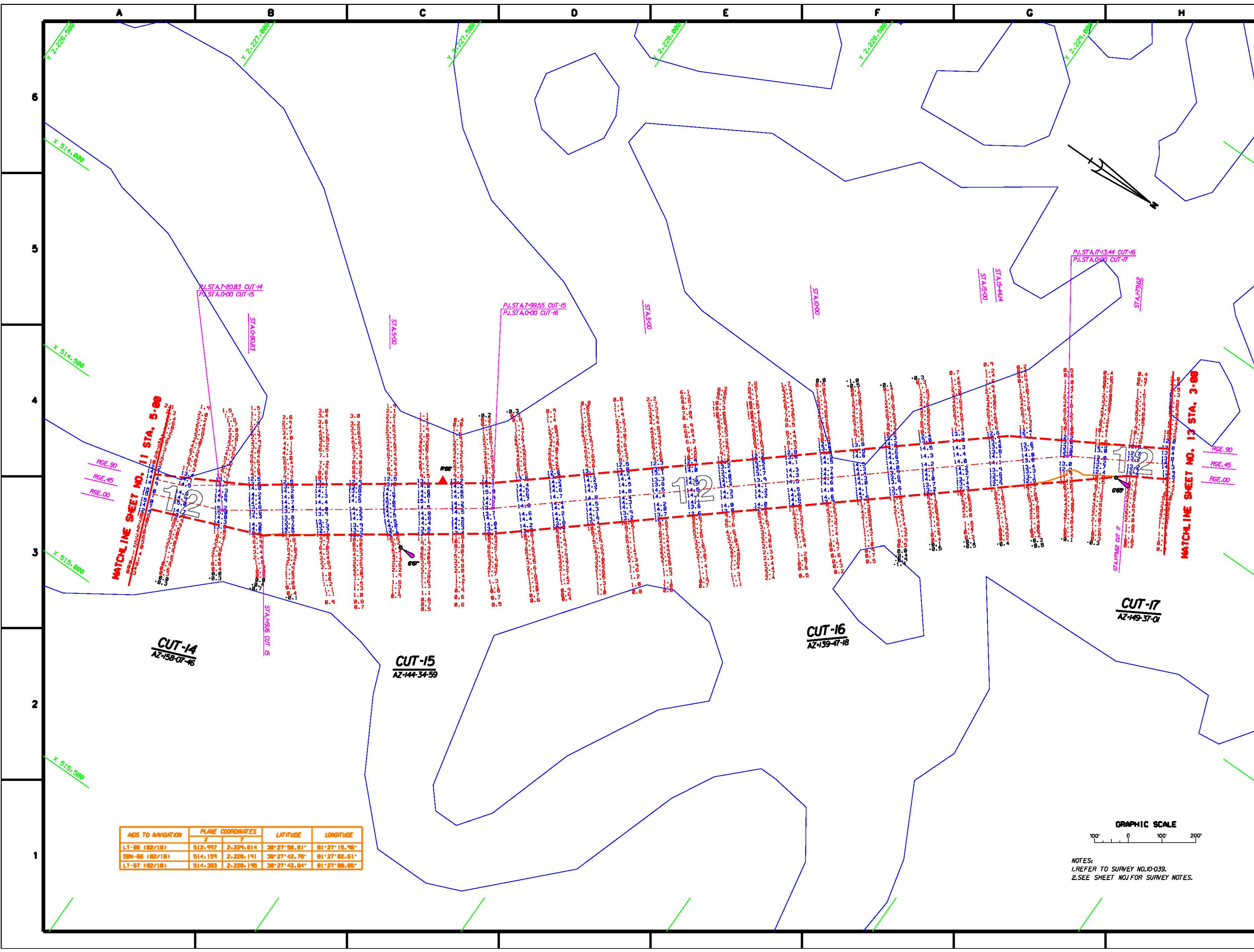


AIDS TO NAVIGATION	PLANE COORDINATES	LATITUDE	LONGITUDE
	X	Y	
CH-68 (82/18)	514.914	2,226.688	28°27'27.72" 81°26'55.98"
CH-69 (82/18)	515.880	2,225.676	28°27'26.84" 81°26'53.87"
CH-71 (82/18)	515.127	2,225.456	28°27'19.75" 81°26'51.42"

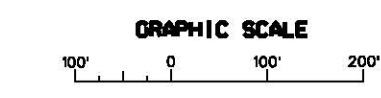
GRAPHIC SCALE
 100' 0 100' 200'

NOTES:
 1. REFER TO SURVEY NO. 10-039.
 2. SEE SHEET NO. J FOR SURVEY NOTES.

 US Army Corps of Engineers Jacksonville District SAFETY ON THIS JOB DEPENDS ON YOU	
DEPARTMENT OF THE ARMY CORPS OF ENGINEERS JACKSONVILLE DISTRICT	
Drawn by: [Name] Checked by: [Name] In Charge: [Name]	Project No. 10071-01-039E District AZ-158 Title EXAMINATION SURVEY 12-FOOT PROJECT Issue Date 05/20/01 Issue No. 1
ATLANTIC INTRACOASTAL WATERWAY FERNANDINA TO ST. JOHNS RIVER, FLORIDA EXAMINATION SURVEY 12-FOOT PROJECT STA. 9+00 CUT-2 THRU STA. 9+00 CUT-14 PLAN	
DRAWING NO. 6/17	SHEET 11 OF 22



ADS TO NAVIGATION	PLANE COORDINATES	LATITUDE	LONGITUDE
LT-88 (82/18)	513.997 2,229.814	28°27'06.81"	81°27'15.76"
DSN-88 (82/18)	514.191 2,229.191	28°27'42.78"	81°27'02.61"
LT-87 (82/18)	514.383 2,229.178	28°27'42.84"	81°27'09.88"



NOTES:
1. REFER TO SURVEY NO. 10-039.
2. SEE SHEET NO. 1 FOR SURVEY NOTES.

MATCHLINE SHEET NO. 11 STA. 5+00

CUT-14
AZ-158-07-16

CUT-15
AZ-144-34-59

CUT-16
AZ-139-47-18

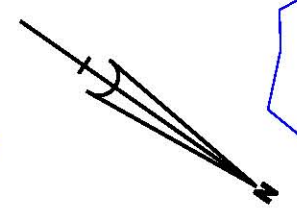
CUT-17
AZ-149-37-01

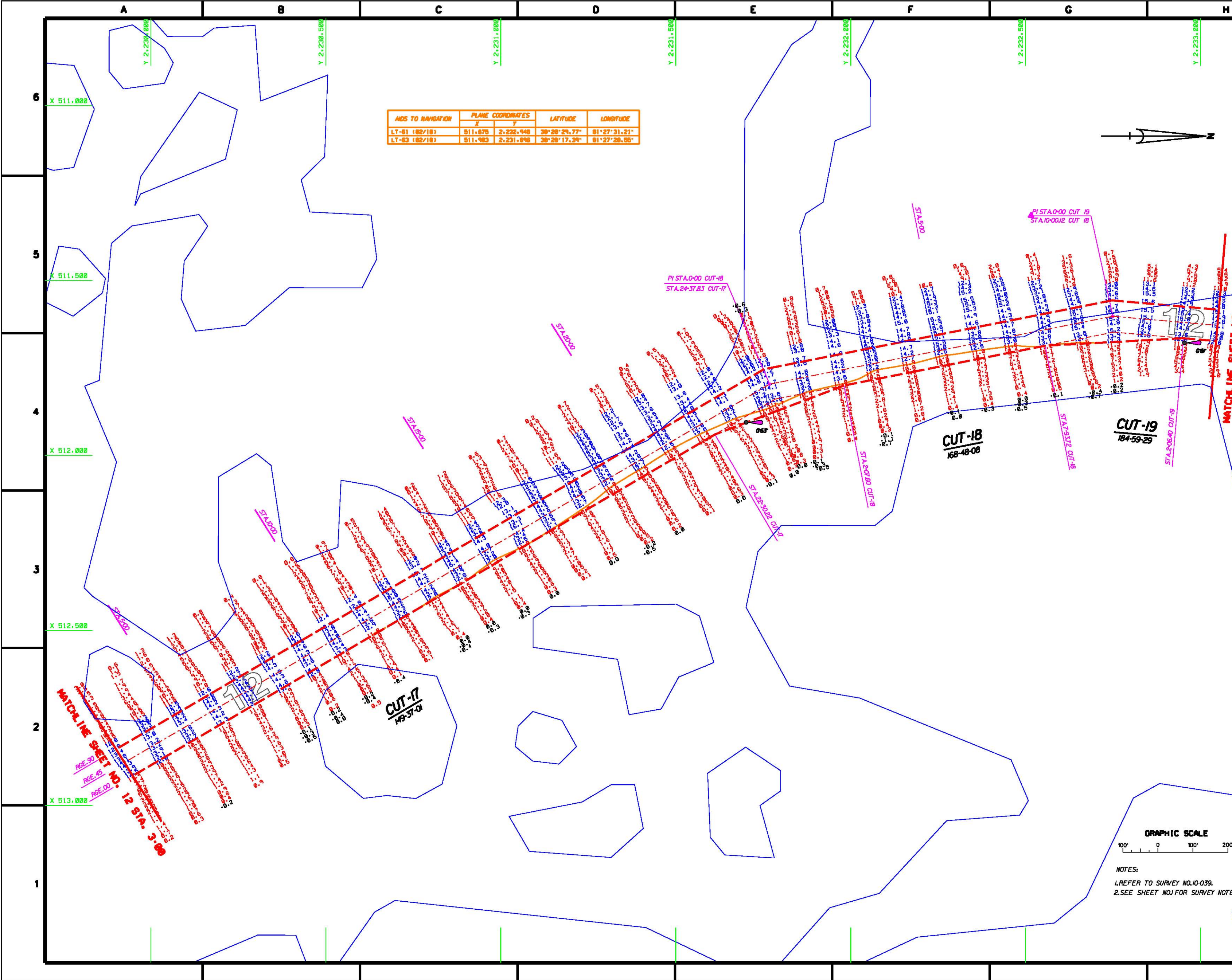
12

12

12

MATCHLINE SHEET NO. 13 STA. 3+00





AIDS TO NAVIGATION	PLANE COORDINATES		LATITUDE	LONGITUDE
	X	Y		
LT-61 (82/18)	511.676	2,232.949	39°28'29.77"	81°27'31.21"
LT-63 (82/18)	511.983	2,231.696	39°28'17.24"	81°27'28.95"

US Army Corps of Engineers
 Jacksonville District

SAFETY ON THIS JOB
 DEPENDS ON YOU

DEPARTMENT OF THE ARMY
 Jacksonville District

Date: 12/22/2012 Scale: AS SHOWN Plot Date: 12/22/2012 Plot Scale: 1"=100'	Date: 12/22/2012 Scale: AS SHOWN Plot Date: 12/22/2012 Plot Scale: 1"=100'
---	---

ATLANTIC INTRACOSTA WATERWAY
 FERNANDINA TO ST. JOHNS RIVER, FLORIDA
 EXAMINATION SURVEY
 12-FOOT PROJECT
 STA. 3+00 CUT-17 THRU STA. 3+00 CUT-9
 PLAN

DRAWING NO.
8/17
 SHEET 13 OF 22



NOTES:
 1. REFER TO SURVEY NO. 10-039.
 2. SEE SHEET NO. 1 FOR SURVEY NOTES.

NO TO NAVIGATION	PLANE COORDINATES		LATITUDE	LONGITUDE
	X	Y		
DBN-93 (82/18)	511.476	2,235.478	28°29'54.63"	81°27'27.68"

US Army Corps of Engineers
Jacksonville District
SAFETY ON THIS JOB
DEPENDS ON YOU

DEPARTMENT OF THE ARMY
CORPS OF ENGINEERS
JACKSONVILLE DISTRICT

Project: ATLANTIC INTRACOASTAL WATERWAY
FROM PANAMA TO ST. JOES RIVER, FLORIDA
EXAMINATION SURVEY
12-FOOT PROJECT
STA. 3+00 CUT-19 THRU STA. 4+00 CUT-20
PLAN

DRAWING NO.
9/17
SHEET 14 OF 22

Y 2,233.000
Y 2,233.500
Y 2,234.000
Y 2,234.500
Y 2,235.000
Y 2,235.500
Y 2,236.000

X 510.500
X 511.000
X 511.500
X 512.000
X 512.500

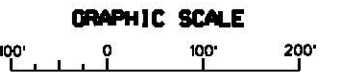


MATCHLINE SHEET NO. 13 STA. 3+00

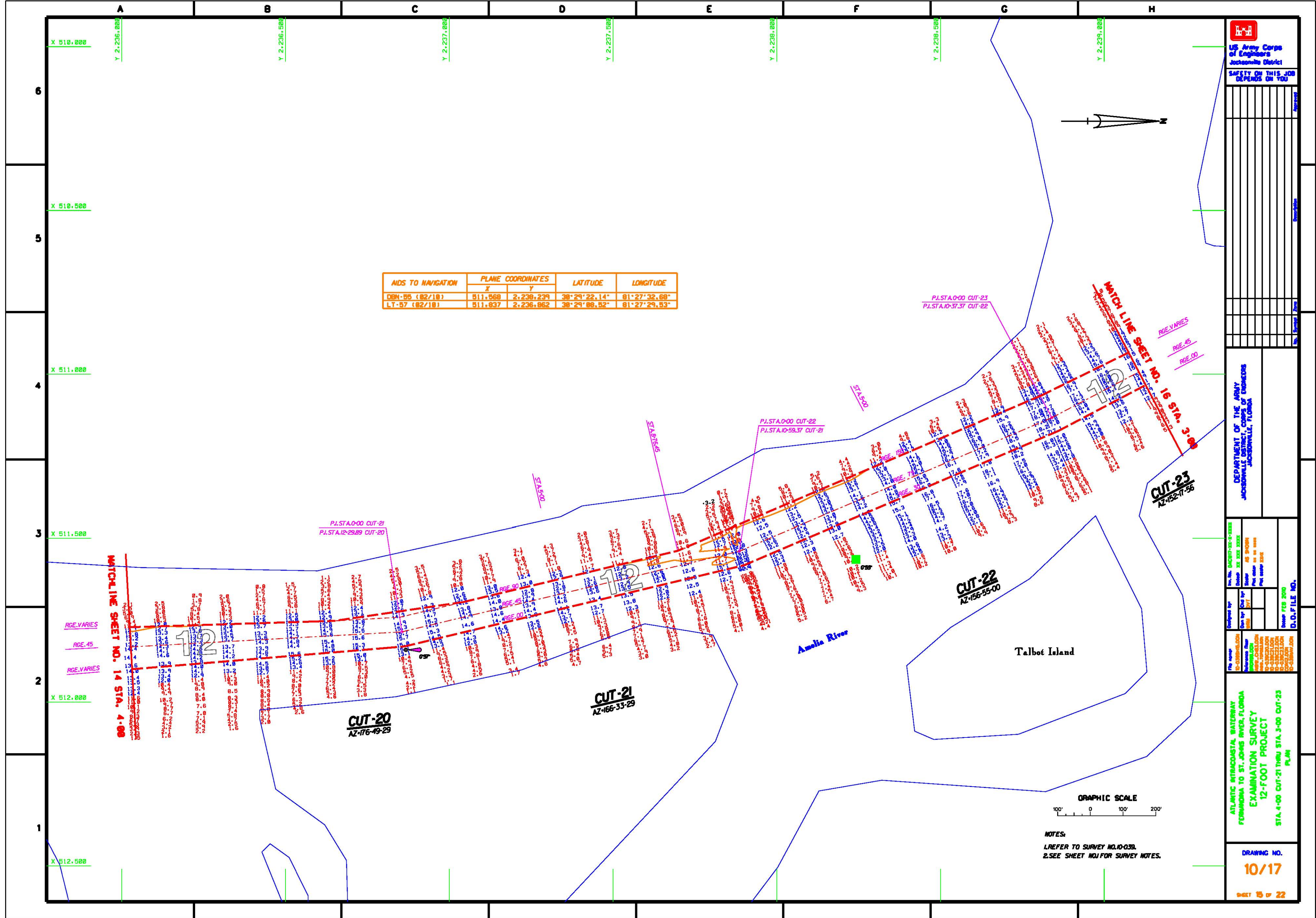
MATCHLINE SHEET NO. 15 STA. 4+00

CUT-19
AZ-184-59-28

CUT-20
AZ-76-49-29



NOTES:
1. REFER TO SURVEY NO. 10-039.
2. SEE SHEET NO. FOR SURVEY NOTES.



IDS TO NAVIGATION	PLANE COORDINATES		LATITUDE	LONGITUDE
	X	Y		
DBN-55 (82/18)	511.568	2,236.239	38°29'22.14"	81°27'32.68"
LT-57 (82/18)	511.637	2,236.862	38°29'08.52"	81°27'29.93"

US Army Corps of Engineers
Jacksonville District
SAFETY ON THIS JOB
DEPENDS ON YOU

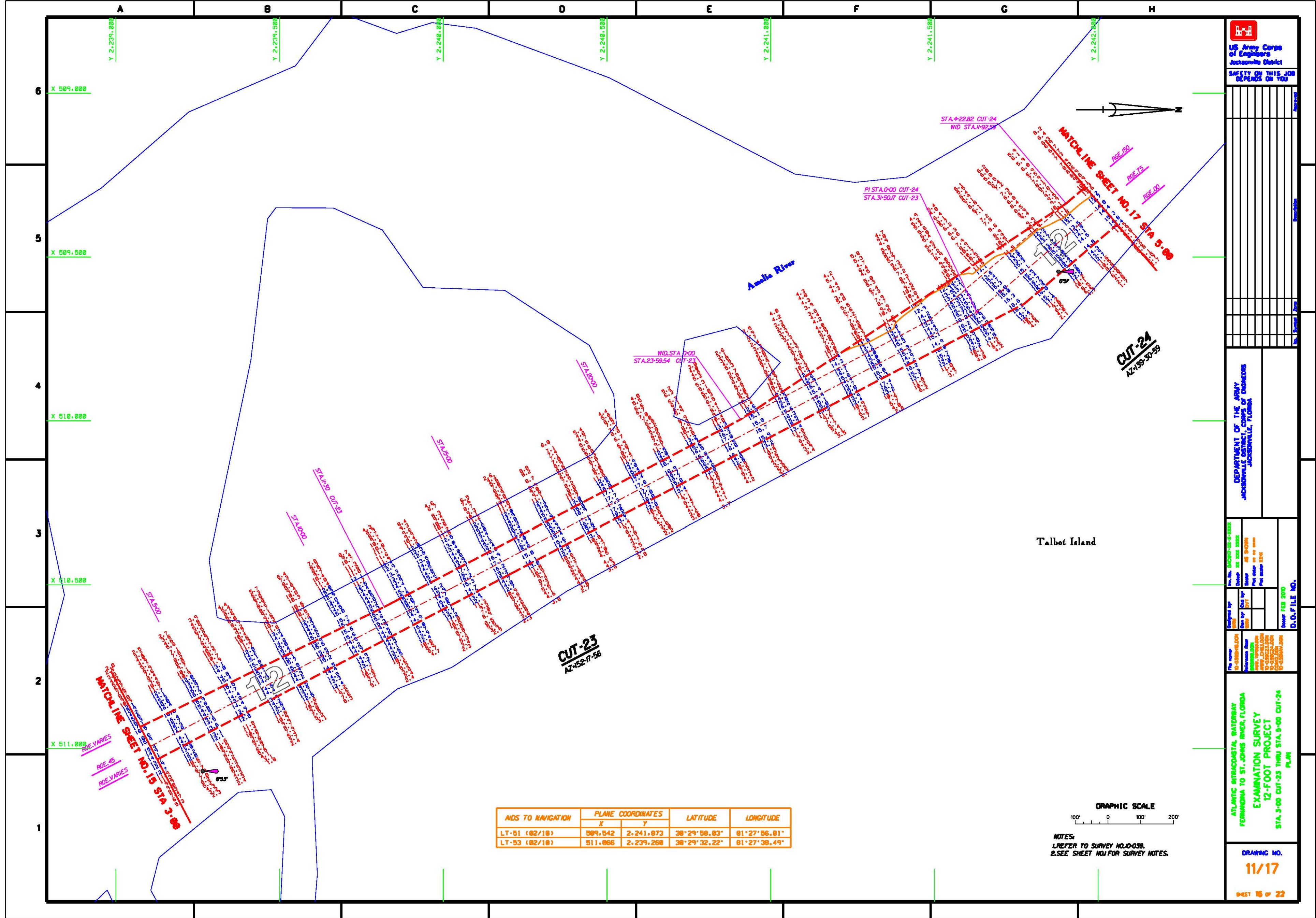
DEPARTMENT OF THE ARMY
CORPS OF ENGINEERS
JACKSONVILLE DISTRICT

Developed by: [Name]
Checked by: [Name]
Date: [Date]
Scale: [Scale]
D.O. FILE NO.

ATLANTIC INTRACOSTA WATERWAY
FROM WADSWORTH TO ST. JOHNS RIVER, FLORIDA
EXAMINATION SURVEY
12-FOOT PROJECT
STA. 4+00 CUT-21 THRU STA. 3+00 CUT-23
PLAN

DRAWING NO.
10/17

GRAPHIC SCALE
100' 0 100' 200'
NOTES:
1. REFER TO SURVEY NO. 10-039.
2. SEE SHEET NO. 1 FOR SURVEY NOTES.



US Army Corps of Engineers
Jacksonville District

SAFETY ON THIS JOB
DEPENDS ON YOU

DEPARTMENT OF THE ARMY
CORPS OF ENGINEERS
JACKSONVILLE DISTRICT

Drawn by: [Name]
Checked by: [Name]
Scale: AS SHOWN
Date: [Date]
Project: [Project Name]

ATLANTIC INTRACOSTAL WATERWAY
FROM WAGNA TO ST. JAMES RIVER, FLORIDA
EXAMINATION SURVEY
12-FOOT PROJECT
STA. 3+00 CUT-23 THRU STA. 9+00 CUT-24
P.L.M.

DRAWING NO.
11/17

SHEET 15 OF 22

AIDS TO NAVIGATION	PLANE COORDINATES		LATITUDE	LONGITUDE
	X	Y		
LT-51 (02/10)	509.542	2,241.073	30°29'58.83"	81°27'56.81"
LT-53 (02/10)	511.066	2,239.268	30°29'32.22"	81°27'38.49"

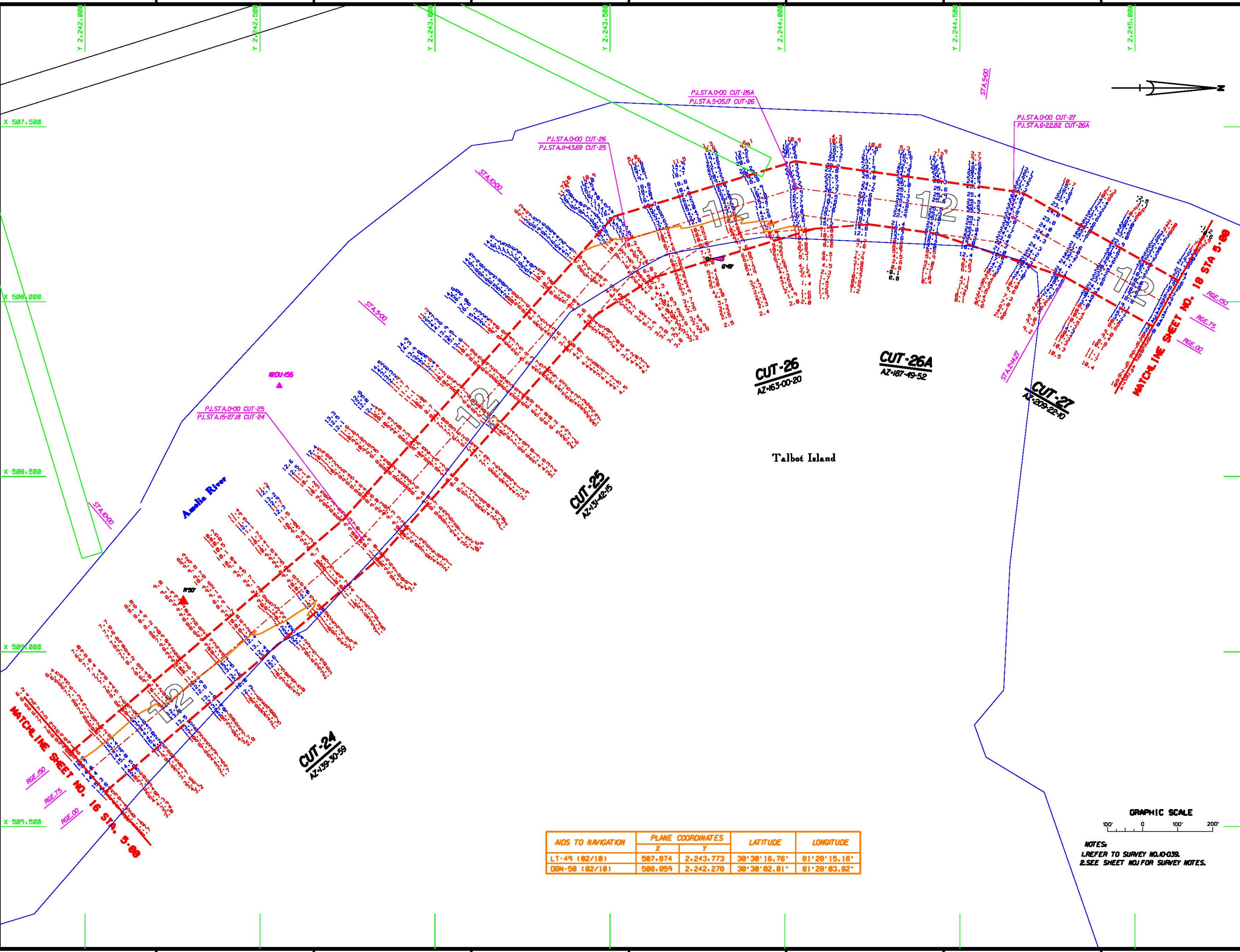
GRAPHIC SCALE
100' 0 100' 200'

NOTES:
1. REFER TO SURVEY NO. 10-039.
2. SEE SHEET NO. 1 FOR SURVEY NOTES.

A B C D E F G H

6
5
4
3
2
1

US Army Corps of Engineers
Jacksonville District
SAFETY ON THIS JOB
DEPENDS ON YOU



AIDS TO NAVIGATION	PLANE COORDINATES		LATITUDE	LONGITUDE
	X	Y		
LT-49 (82/18)	507.874	2,243.773	30°38'16.76"	81°28'15.16"
DBN-56 (82/18)	506.659	2,242.278	30°38'02.81"	81°28'03.62"

GRAPHIC SCALE
100' 0 100' 200'

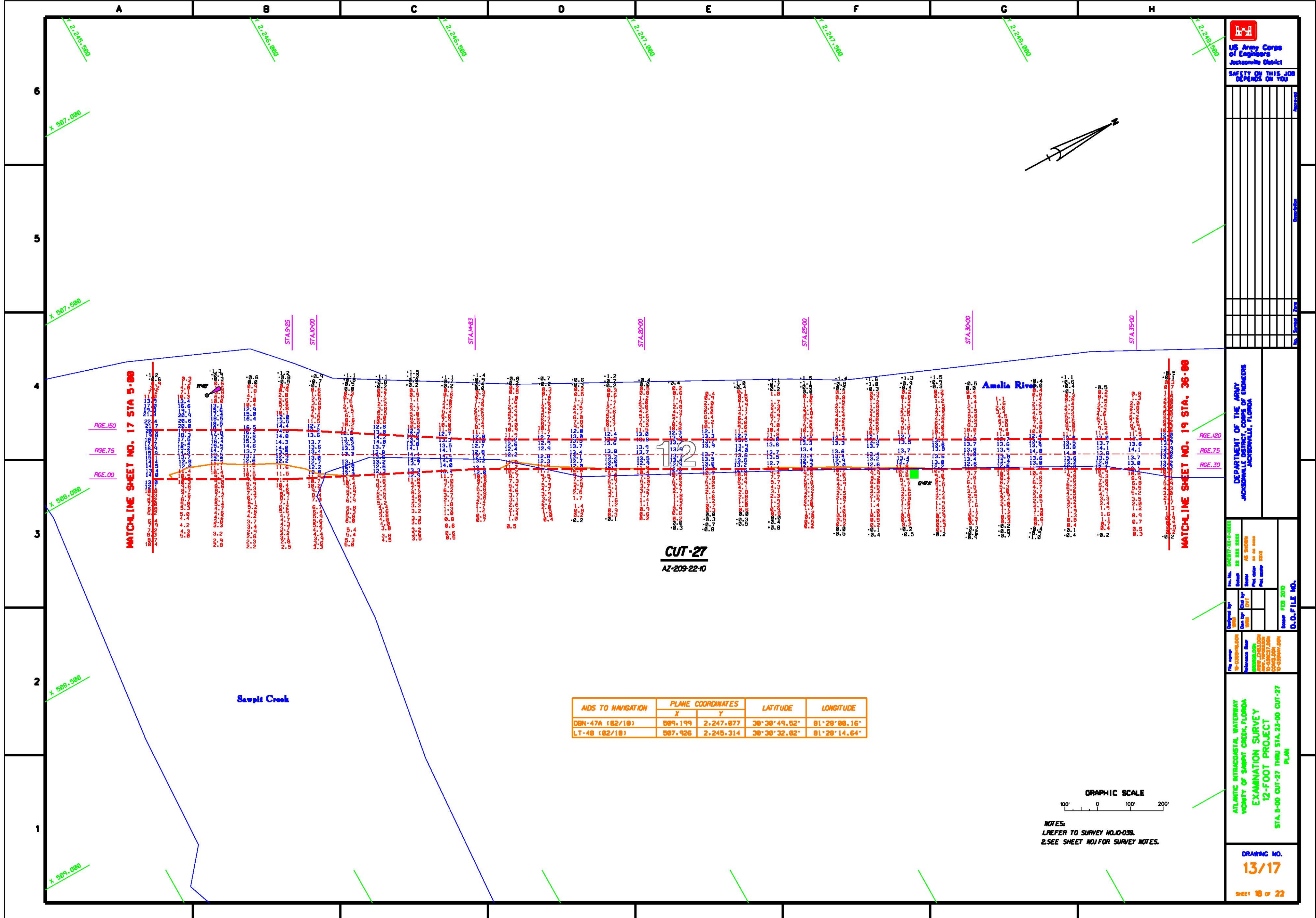
NOTES:
1. REFER TO SURVEY NO. 10-035.
2. SEE SHEET NO. FOR SURVEY NOTES.

DEPARTMENT OF THE ARMY
CORPS OF ENGINEERS
JACKSONVILLE DISTRICT
JACKSONVILLE, FLORIDA

Developed by: DMSB/2013-03-22/22
 Checked by: JES/2013-03-22/22
 Drawn by: JES/2013-03-22/22
 Title: 12-FOOT PROJECT
 Project No.: 10-035
 Date: 03/22/13
 Scale: AS SHOWN
 Author: JES/2013-03-22/22
 D.O.F. FILE NO. 10-035/2013-03-22/22

ATLANTIC INTRACASTAL WATERWAY
 PENNSHOLA TO ST. JAMES RIVER, FLORIDA
 EXAMINATION SURVEY
 12-FOOT PROJECT
 STA. 5+00 CUT-24 THRU STA. 5+00 CUT-27
 PLAN

DRAWING NO.
12/17
SHEET 17 OF 22



US Army Corps of Engineers
Jacksonville District
SAFETY ON THIS JOB
DEPENDS ON YOU

DEPARTMENT OF THE ARMY
CORPS OF ENGINEERS
JACKSONVILLE DISTRICT

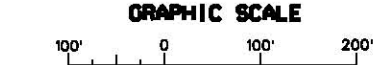
Drawn by: [Name]
Checked by: [Name]
Scale: AS SHOWN
Date: [Date]

ATLANTIC INTRACOASTAL WATERWAY
VICINITY OF SAWPIT CREEK, FLORIDA
EXAMINATION SURVEY
12-FOOT PROJECT
STA 5+00 CUT-27 THRU STA 23+00 CUT-27
PLAN

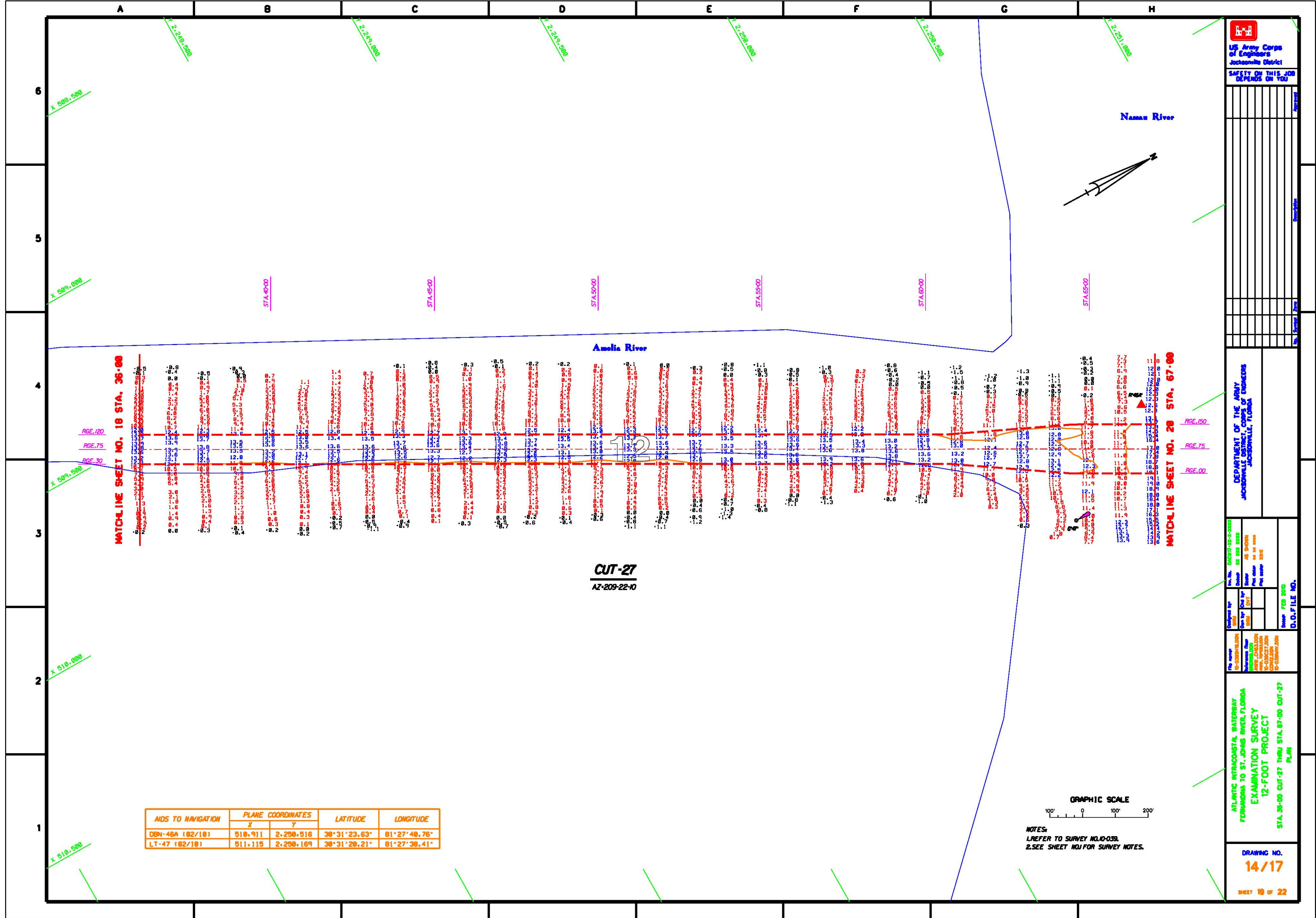
DRAWING NO.
13/17
SHEET 13 OF 22

CUT-27
AZ-209-22-10

AIDS TO NAVIGATION	PLANE COORDINATES		LATITUDE	LONGITUDE
	X	Y		
DSN-47A (82/18)	589,199	2,247,877	38°38'49.52"	81°28'08.16"
LT-48 (82/18)	587,926	2,245,314	38°38'32.82"	81°28'14.64"



NOTES:
1. REFER TO SURVEY NO. 10-038.
2. SEE SHEET NO. 1 FOR SURVEY NOTES.



AIDS TO NAVIGATION	PLANE COORDINATES		LATITUDE	LONGITUDE
	X	Y		
DBN-46A (02/10)	510.911	2,250.516	30°31'23.63"	81°27'49.76"
LT-47 (02/10)	511.115	2,250.169	30°31'28.21"	81°27'38.41"

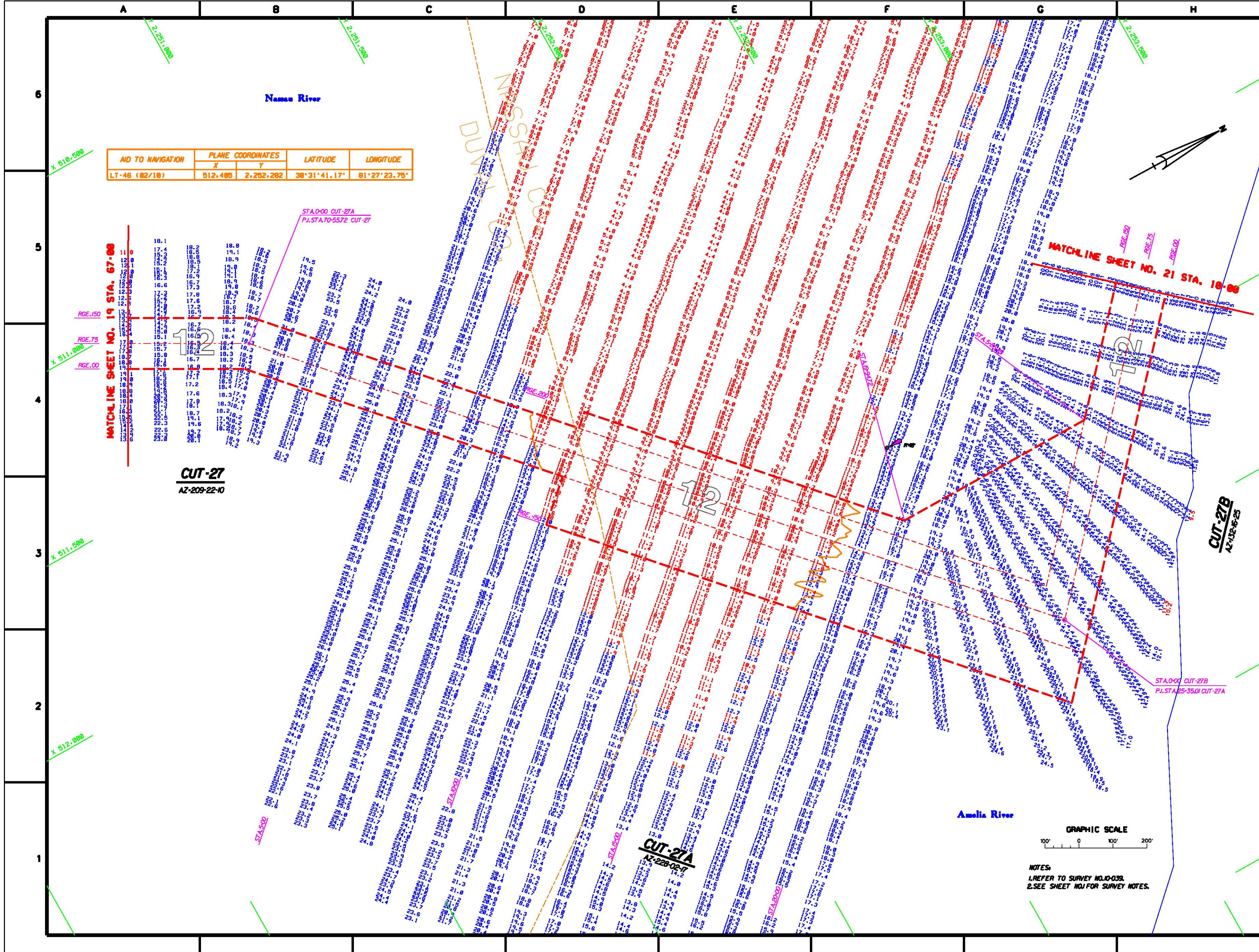
GRAPHIC SCALE
 100' 0 100' 200'
 NOTES:
 1. REFER TO SURVEY NO. 10-039.
 2. SEE SHEET NO. 14 FOR SURVEY NOTES.

US Army Corps of Engineers
 Jacksonville District
 SAFETY ON THIS JOB
 DEPENDS ON YOU

DEPARTMENT OF THE ARMY
 JACKSONVILLE DISTRICT
 JACKSONVILLE, FLORIDA

DESIGNED BY: D-03848/JUN
 CHECKED BY: D-03848/JUN
 DRAWN BY: D-03848/JUN
 DATE: 06/22/10
 PROJECT: ATLANTIC INTRACOSTA WATERWAY
 FROM NASSAU TO ST. JAMES RIVER, FLORIDA
 EXAMINATION SURVEY
 12-FOOT PROJECT
 STA. 36+00 CUT-27 THRU STA. 67+00 CUT-27
 PLAN
 DRAWING NO. 14/17
 SHEET 10 OF 22

ATLANTIC INTRACOSTA WATERWAY
 FROM NASSAU TO ST. JAMES RIVER, FLORIDA
 EXAMINATION SURVEY
 12-FOOT PROJECT
 STA. 36+00 CUT-27 THRU STA. 67+00 CUT-27
 PLAN
 DRAWING NO. 14/17
 SHEET 10 OF 22



AID TO NAVIGATION	PLANE COORDINATES		LATITUDE	LONGITUDE
	X	Y		
LT-46 (82/10)	512.405	2.252.282	38°31'41.17"	81°27'23.75"

MATCHLINE SHEET NO. 19 STA. 67+00

CUT-27
AZ-209-22-10

CUT-27A
AZ-228-02-17

CUT-27B
AZ-132-16-25



NOTES:
1. REFER TO SURVEY NO. 10-039.
2. SEE SHEET NO. 1 FOR SURVEY NOTES.

US Army Corps of Engineers
Jacksonville District
SAFETY ON THIS JOB DEPENDS ON YOU

DEPARTMENT OF THE ARMY
Jacksonville District
Jacksonville, Florida

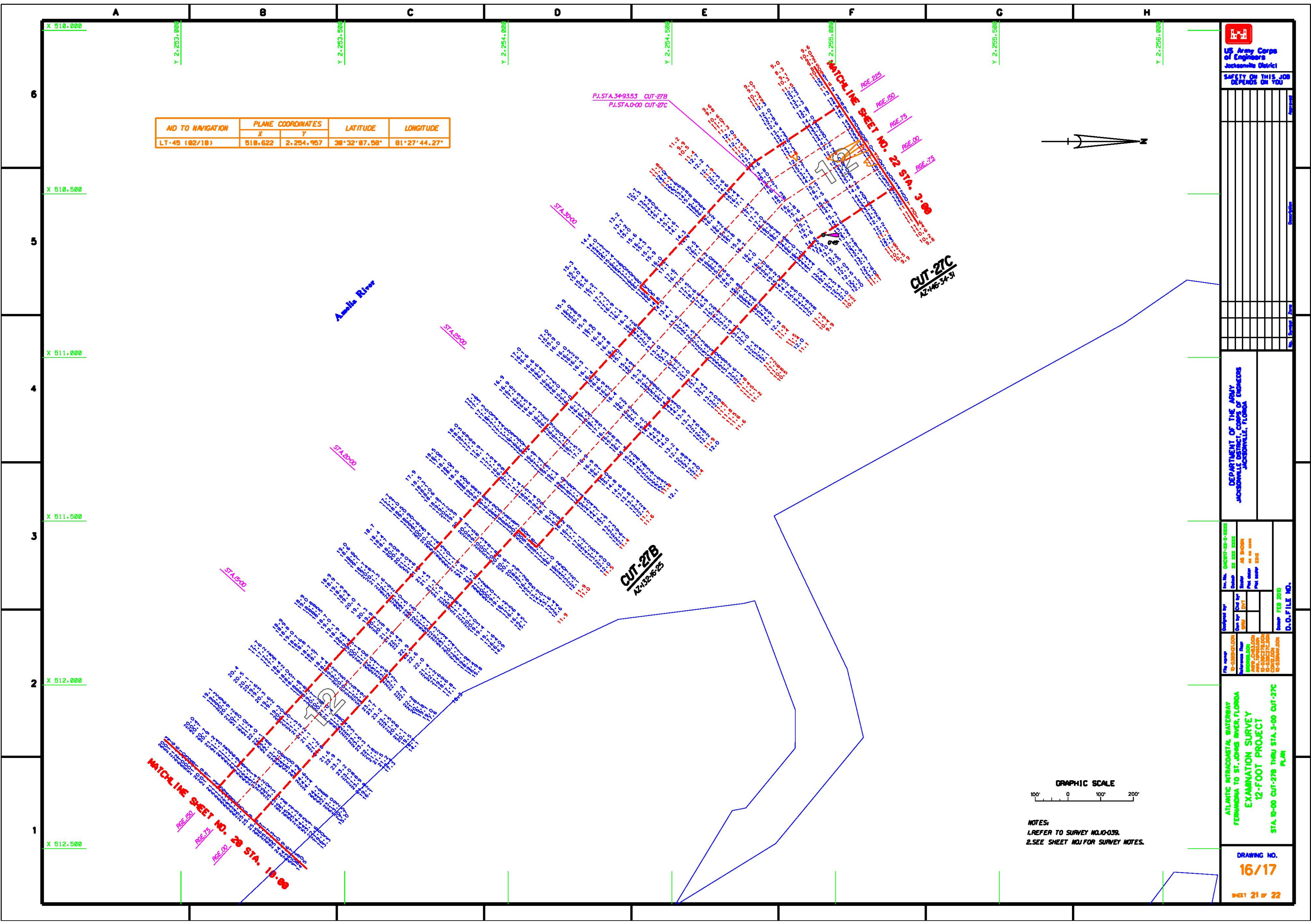
Drawn by	Checked by	Reviewed by

ATLANTIC INTRACASTAL WATERWAY
FERNOACHA TO ST. JAMES RIVER, FLORIDA
EXAMINATION SURVEY
12-FOOT PROJECT
STA. 07+00 CUT-27 THRU STA. 0+00 CUT-27B
PLAN

DRAWING NO.
15/17

SHEET 20 OF 22

AID TO NAVIGATION	PLANE COORDINATES		LATITUDE	LONGITUDE
	X	Y		
LT-45 (02/10)	518.622	2,254.957	30°32'07.58"	81°27'44.27"



US Army Corps of Engineers
Jacksonville District

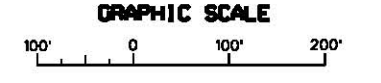
SAFETY ON THIS JOB
DEPENDS ON YOU

DEPARTMENT OF THE ARMY
CORPS OF ENGINEERS
JACKSONVILLE DISTRICT

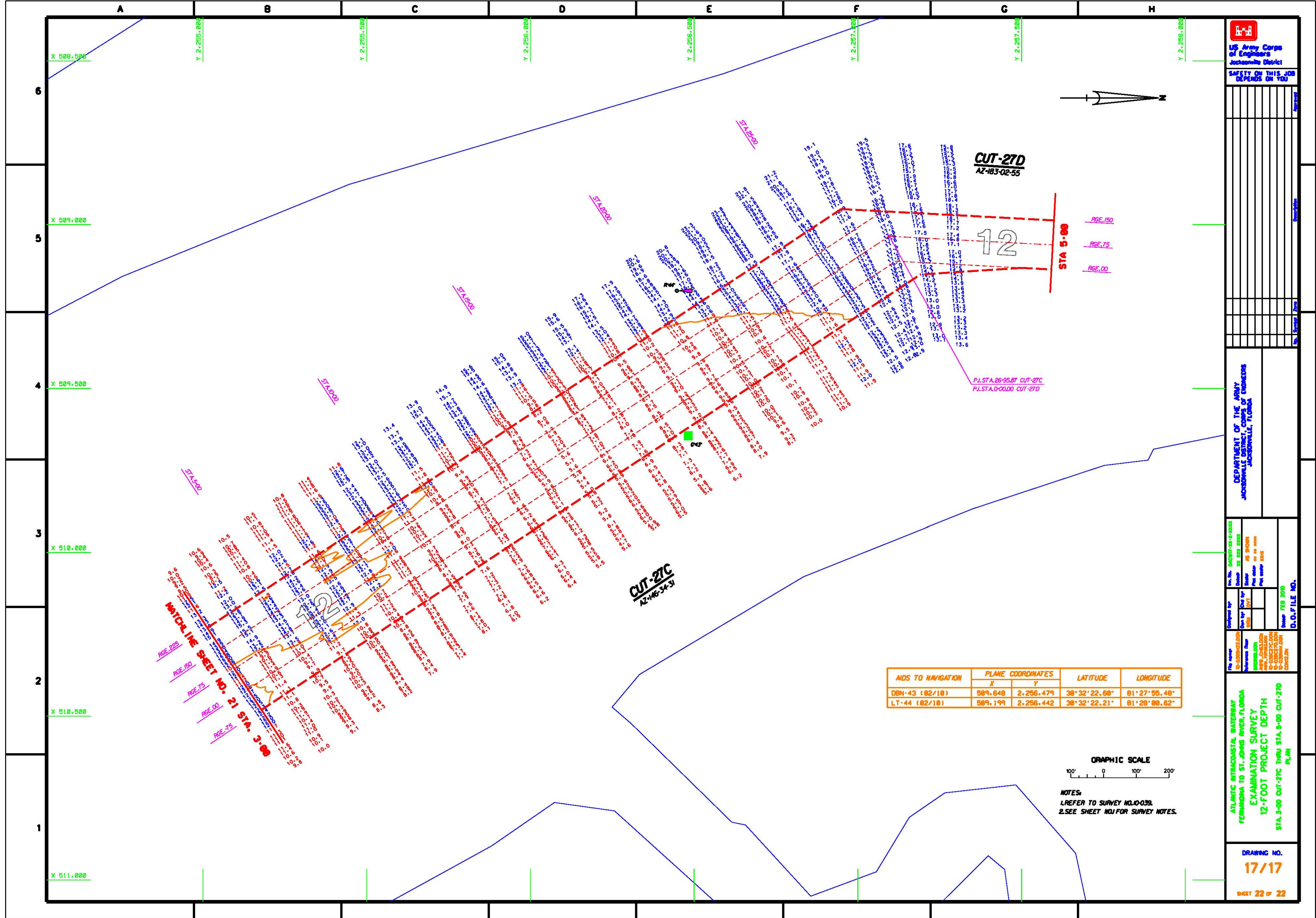
Developed by: [Name]
Checked by: [Name]
Drawn by: [Name]
Scale: [Scale]
Date: [Date]

ATLANTIC INTRACOSTAL WATERWAY
FERNSHAW TO ST. JOHNS RIVER, FLORIDA
EXAMINATION SURVEY
12-FOOT PROJECT
STA. 0+00 CUT-27B THRU STA. 3+00 CUT-27C
PLAN

DRAWING NO.
16/17
SHEET 21 OF 22

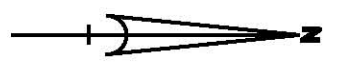


NOTES:
1. REFER TO SURVEY NO. 10-039.
2. SEE SHEET NO. 1 FOR SURVEY NOTES.



US Army Corps of Engineers
Jacksonville District

SAFETY ON THIS JOB
DEPENDS ON YOU



DEPARTMENT OF THE ARMY
CORPS OF ENGINEERS
JACKSONVILLE DISTRICT

Developed by: [Name]
Checked by: [Name]
Drawn by: [Name]
Scale: [Scale]
Date: [Date]

ATLANTIC INTRACOASTAL WATERWAY
FERROVIA TO ST. JOHNS RIVER, FLORIDA
EXAMINATION SURVEY
12-FOOT PROJECT DEPTH
STA. 3+00 CUT-27C THRU STA. 5+00 CUT-27D
PLAN

DRAWING NO.
17/17

SHEET 22 of 22

AIDS TO NAVIGATION	PLANE COORDINATES		LATITUDE	LONGITUDE
	X	Y		
DBN-43 (82/18)	589.648	2,256.479	38°32'22.60"	81°27'55.48"
LT-44 (82/18)	589.199	2,256.442	38°32'22.21"	81°28'00.62"

GRAPHIC SCALE
100' 0 100' 200'

NOTES:
1. REFER TO SURVEY NO. 10-039.
2. SEE SHEET NO. 1 FOR SURVEY NOTES.