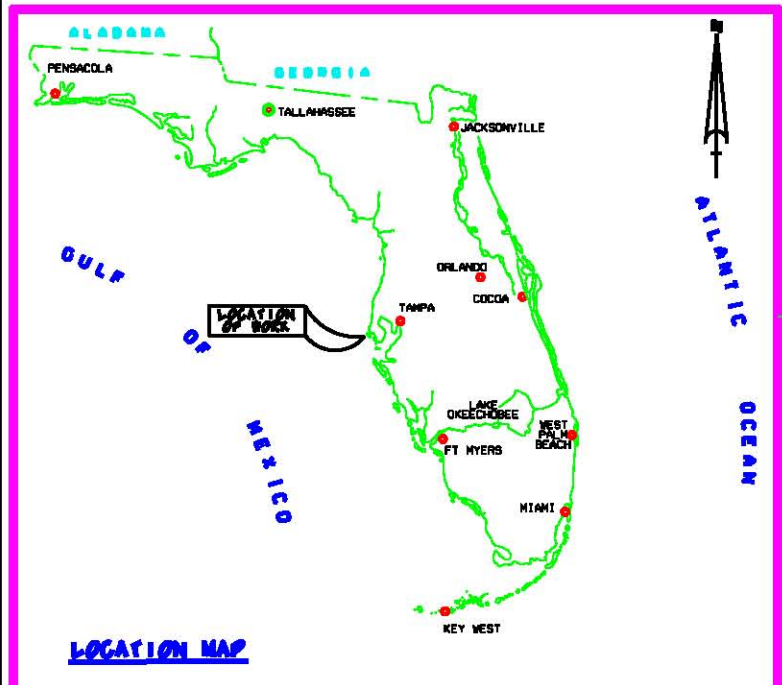


PASS-A-GRILLE HARBOR PROJECT CONDITION SURVEY 8 AND 10-FOOT PROJECT



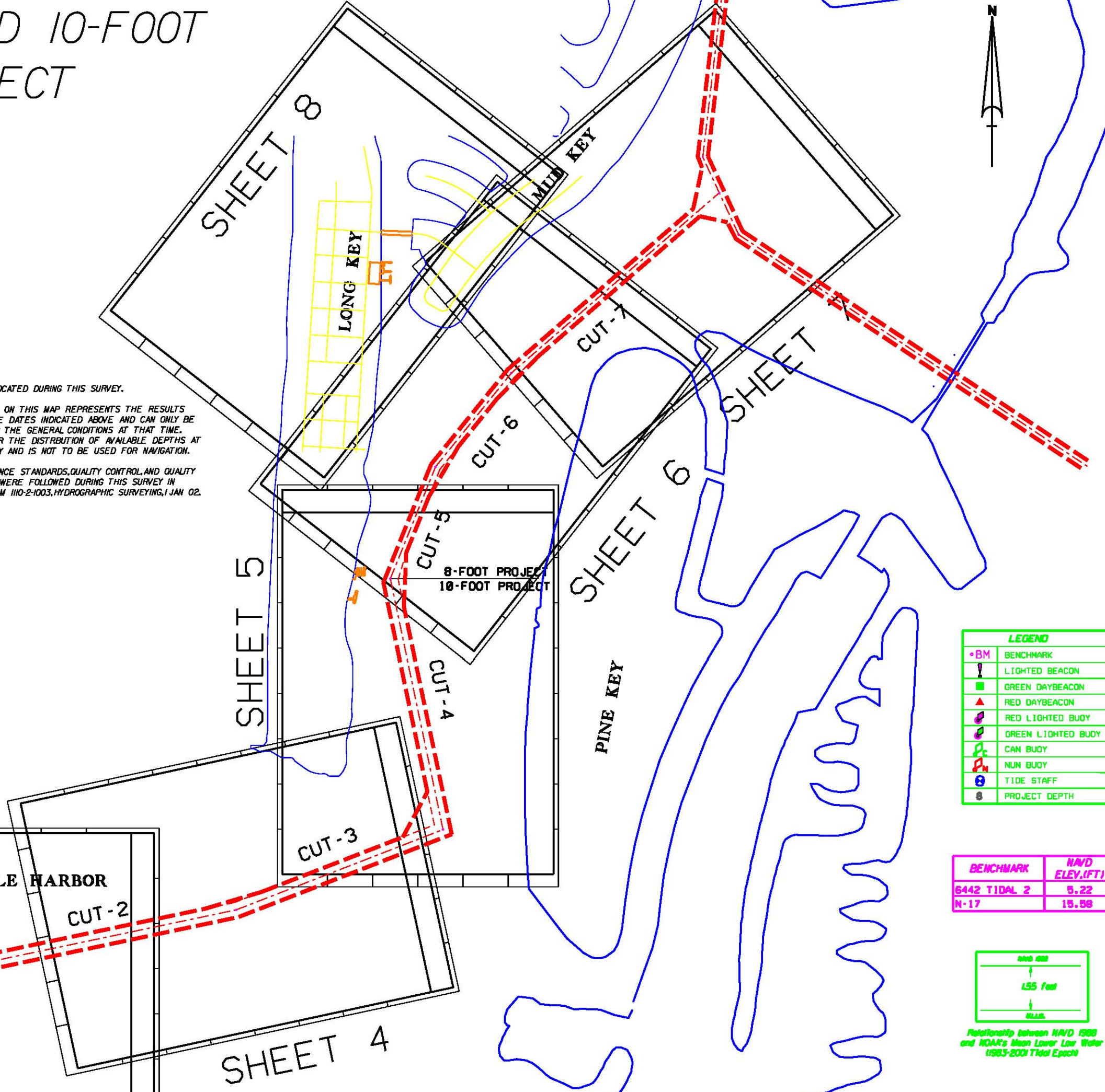
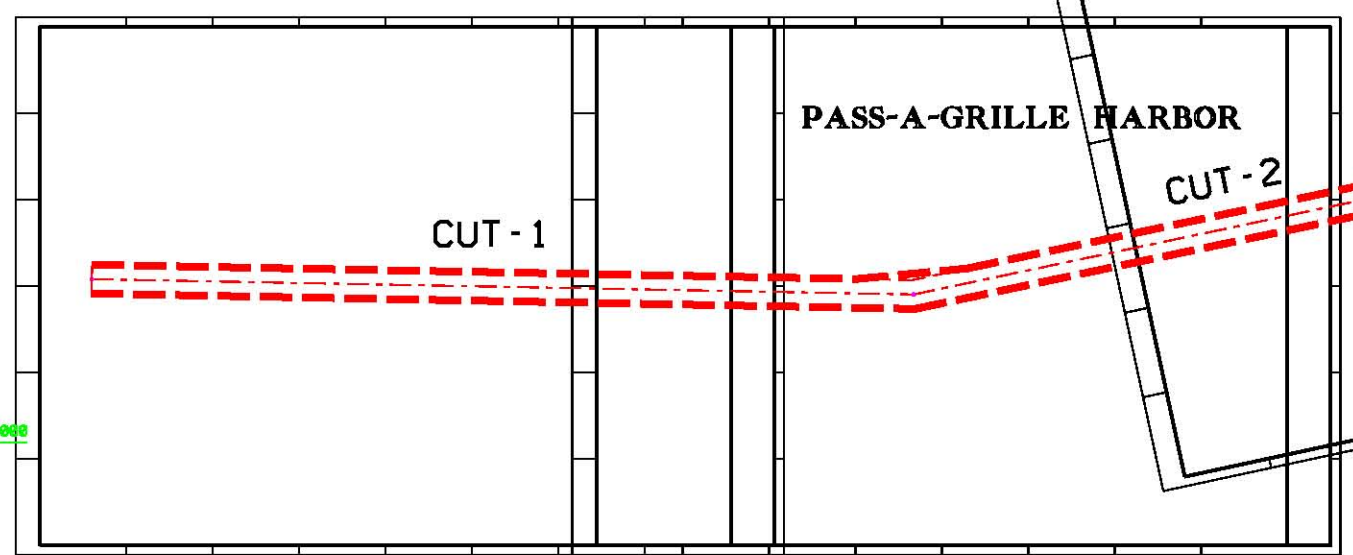
SURVEY NOTES:

- REFER TO SURVEY NO.09-174.
- SOUNDINGS ARE IN FEET AND TENTHS AND REFER TO NOAA'S REPORTED MEAN LOWER LOW WATER (MLLW) OF THE 1983-2001 TIDAL EPOCH.
- ALL ELEVATIONS ARE BELOW THE CHART DATUM UNLESS PRECEDED BY A (+) SIGN.
- TIDAL REDUCTIONS WERE OBTAINED UTILIZING REAL-TIME KINEMATIC GPS WITH A KINEMATIC TIDE DATUM MODEL.
- PLANE COORDINATES ARE BASED ON THE TRANSVERSE MERCATOR PROJECTION FOR THE WEST ZONE OF FLORIDA AND REFERENCED TO NORTH AMERICAN DATUM OF 1983 (NAD83).
- ALL AZIMUTHS ARE GRID, RECKONED CLOCKWISE FROM SOUTH.
- ALL STATIONING REFERS TO THE CENTERLINE OF THE CHANNEL.
- SURVEY WAS PERFORMED USING REAL-TIME KINEMATIC GPS FOR POSITIONING WITH THE FOLLOWING REFERENCE BASE LOCATIONS:
 *REFERENCE BASE LOCATED AT '6442 TIDAL 2'
 LATITUDE: 27°41'27.28276" N
 LONGITUDE: 082°44'09.01912" W
 MLLW ELEVATION: 5.22'
 *TIDE STAFF ESTABLISHED FROM 'N-17'
 LATITUDE: 27°41'30" N
 LONGITUDE: 082°43'09" W
 MLLW ELEVATION: 15.56'
 MLLW ELEVATION: 17.13'

VESSEL	DATE OF SURVEY	CUT
WB-34	13,18-19 JUL 2009	1-7

9. AIDS TO NAVIGATION WERE LOCATED DURING THIS SURVEY.
10. THE INFORMATION DEPICTED ON THIS MAP REPRESENTS THE RESULTS OF SURVEYS MADE ON THE DATES INDICATED ABOVE AND CAN ONLY BE CONSIDERED AS INDICATING THE GENERAL CONDITIONS AT THAT TIME. THIS CHART IS SOLELY FOR THE DISTRIBUTION OF AVAILABLE DEPTHS AT THE TIME OF THE SURVEY AND IS NOT TO BE USED FOR NAVIGATION.
11. SURVEY ACCURACY PERFORMANCE STANDARDS, QUALITY CONTROL, AND QUALITY ASSURANCE REQUIREMENTS WERE FOLLOWED DURING THIS SURVEY IN ACCORDANCE WITH USACE EM 110-2-1003, HYDROGRAPHIC SURVEYING, JAN 02.

SHEET 2



LEGEND

BM	BENCHMARK
L	LIGHTED BEACON
G	GREEN DAYBEACON
R	RED DAYBEACON
L	RED LIGHTED BUOY
G	GREEN LIGHTED BUOY
C	CAN BUOY
N	NUM BUOY
T	TIDE STAFF
D	PROJECT DEPTH

BENCHMARK	MVD ELEV.(FT)
6442 TIDAL 2	5.22
N-17	15.56



GRAPHIC SCALE
500' 0 500' 1000'

US Army Corps of Engineers
Jacksonville District
SAFETY ON THIS JOB
DEPENDS ON YOU

DEPARTMENT OF THE ARMY
CORPS OF ENGINEERS
JACKSONVILLE DISTRICT

Drawn by	Checked by	Scale	AS SHOWN
Project No.	Sheet No.	Project Name	Project Date
Drawn by	Checked by	Scale	AS SHOWN
Project No.	Sheet No.	Project Name	Project Date

PASS-A-GRILLE HARBOR
PASS-A-GRILLE HARBOR
PASS-A-GRILLE HARBOR
PROJECT CONDITION SURVEY
8 AND 10-FOOT PROJECT
COVER SHEET AND INDEX
PLAN

DRAWING NO.
1/8
SHEET 1 OF 8

AIDS TO NAVIGATION	PLANE COORDINATES		LATITUDE	LONGITUDE
	X	Y		
DBN-1 (07/89)	418.681	1,215.726	27°48'34.16"	82°45'31.39"
DBN-2 (07/89)	418.554	1,215.429	27°48'31.29"	82°45'31.98"
DBN-3 (07/89)	411.783	1,215.498	27°48'31.97"	82°45'18.23"

GULF OF MEXICO



STA. 0+00

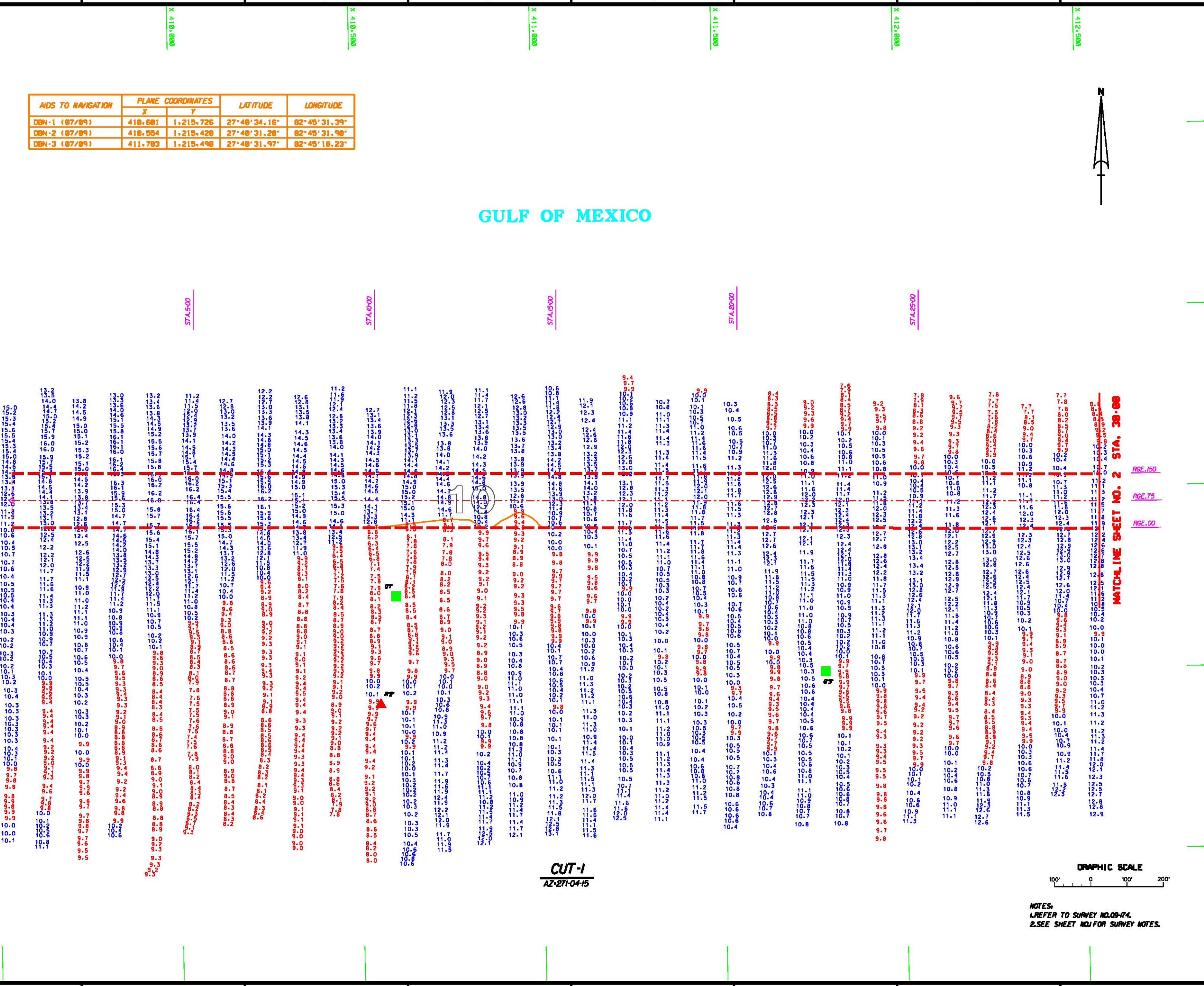
STA. 0+50

STA. 1+00

STA. 1+50

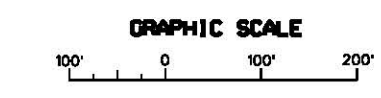
STA. 2+00

STA. 2+50



CUT-1
AZ-271-0415

MATCHLINE SHEET NO. 2 STA. 30+00



NOTES:
1. REFER TO SURVEY NO. 09-74.
2. SEE SHEET NO. 1 FOR SURVEY NOTES.

US Army Corps of Engineers
Jacksonville District

SAFETY ON THIS JOB DEPENDS ON YOU

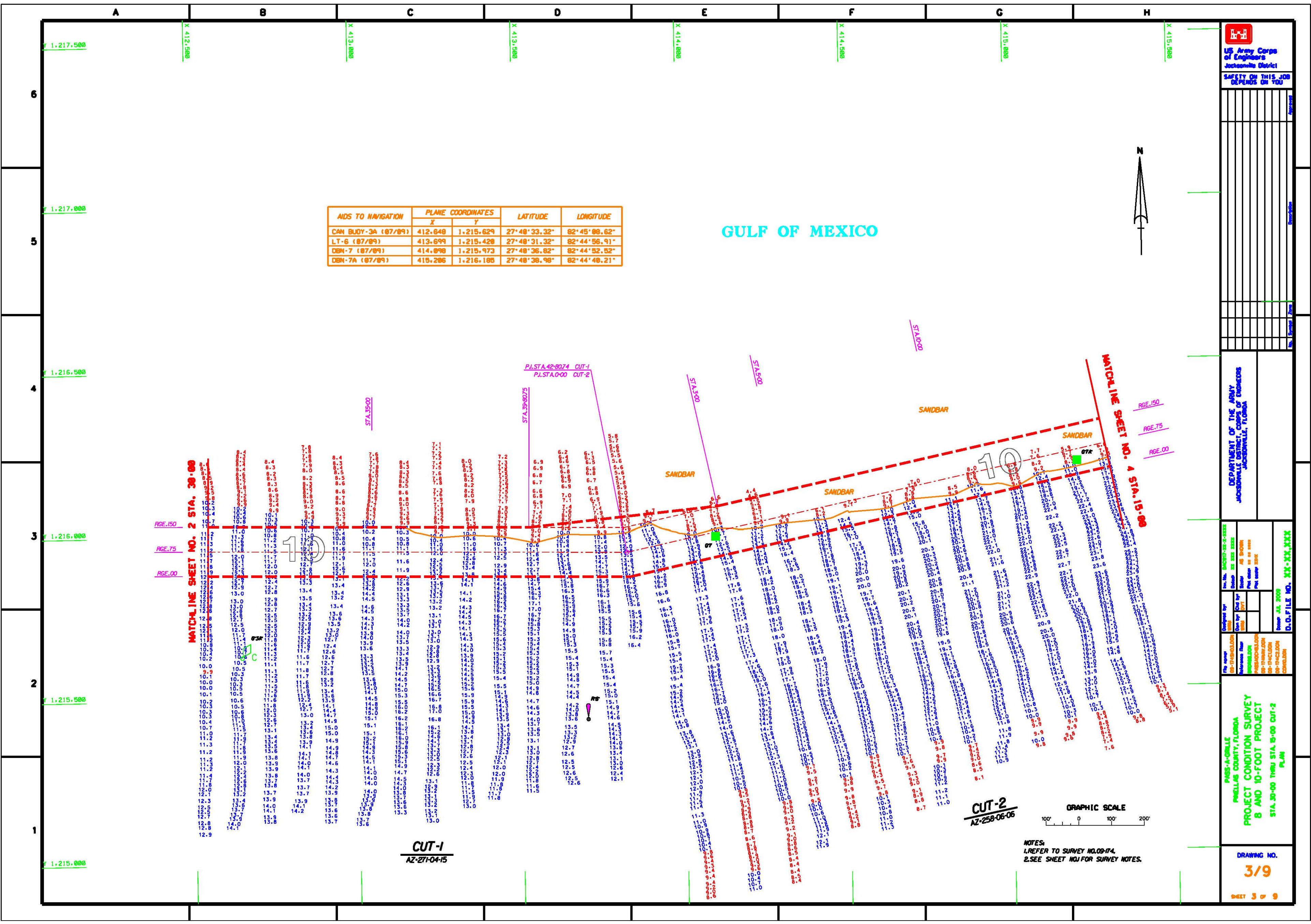
DEPARTMENT OF THE ARMY
Jacksonville, Florida

Drawn by	Checked by	Scale	Sheet No.

PASS-A-GRIFF PASS
WELLS COUNTY, FLORIDA
PROJECT CONDITION SURVEY
B AND 10-FOOT PROJECT
STA. 0+00 THRU STA. 30+00 CUT-1
PLAN

DRAWING NO.
2/9

SHEET 2 OF 9



AIDS TO NAVIGATION	PLANE COORDINATES		LATITUDE	LONGITUDE
	X	Y		
CAN BUOY-3A (07/09)	412.648	1,215,629	27°48'33.32"	82°45'09.62"
LT-6 (07/09)	413.699	1,215,428	27°48'31.32"	82°44'56.91"
DBN-7 (07/09)	414.098	1,215,973	27°48'36.82"	82°44'52.52"
DBN-7A (07/09)	415.286	1,216,185	27°48'36.98"	82°44'48.21"


 US Army Corps of Engineers
 Jacksonville District
 SAFETY ON THIS JOB
 DEPENDS ON YOU

DEPARTMENT OF THE ARMY
 JACKSONVILLE DISTRICT
 JACKSONVILLE, FLORIDA

Project No. 06077-01-0-0000
 Contract No. 06077-01-0-0000
 Task Order No. 06077-01-0-0000
 Work Order No. 06077-01-0-0000
 Revision No. 06077-01-0-0000
 Date: 06-06-06
 D.O.F. FILE NO. 06-06-06

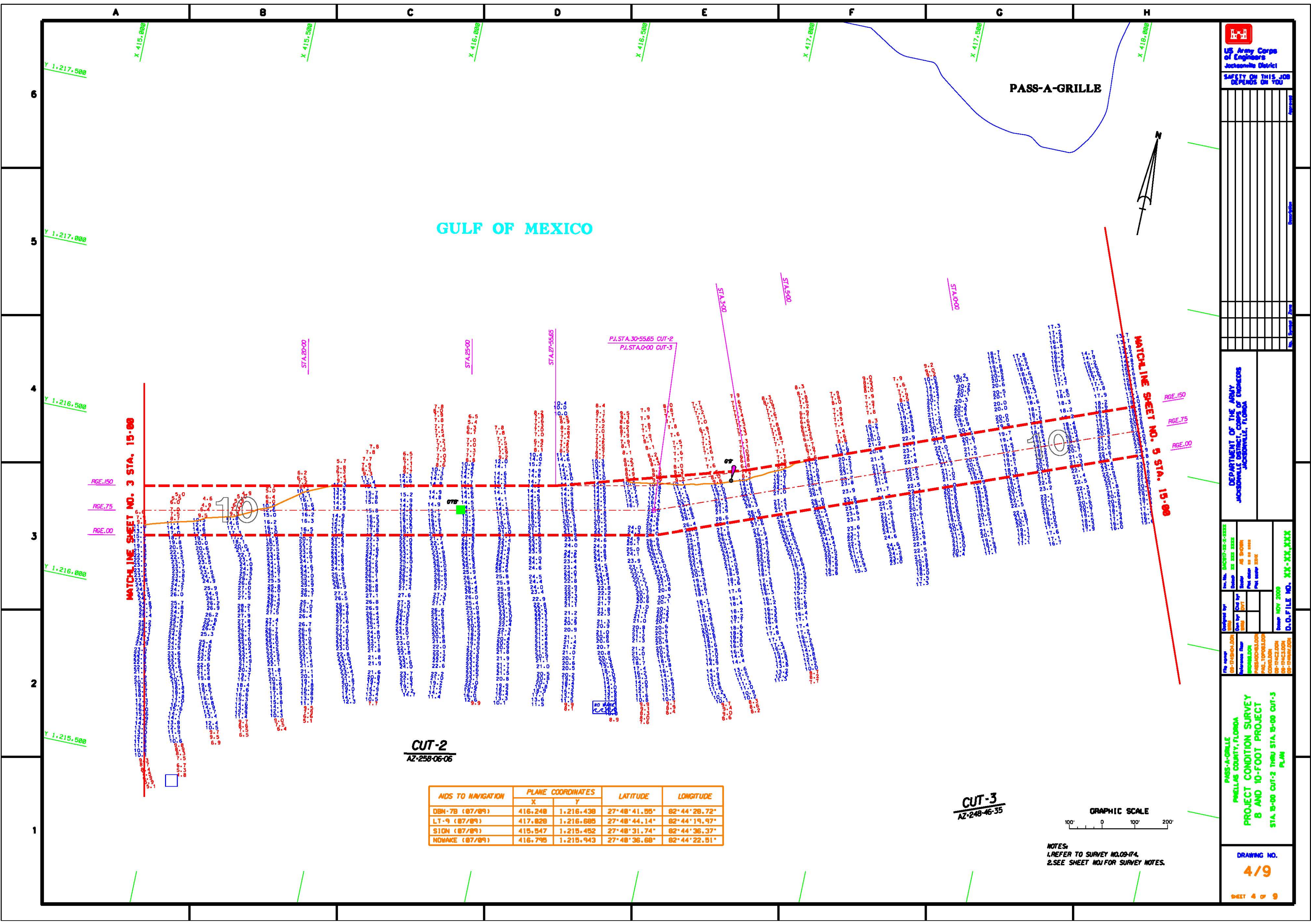
PASS-A-GRILLE
 WELLS COUNTY, FLORIDA
 PROJECT CONDITION SURVEY
 B AND 10-FOOT PROJECT
 STA. 30+00 THRU STA. 15+00 CUT-2
 PLAN

DRAWING NO.
3/9
 SHEET 3 of 9

NOTES:
 1. REFER TO SURVEY NO. 09-174.
 2. SEE SHEET NO. J FOR SURVEY NOTES.

CUT-2
 AZ-258-06-06

CUT-1
 AZ-271-04-15



US Army Corps of Engineers
Jacksonville District
SAFETY ON THIS JOB
DEPENDS ON YOU

DEPARTMENT OF THE ARMY
ENGINEER REGIMENT
JACKSONVILLE, FLORIDA

DESIGNED BY: [blank]
CHECKED BY: [blank]
DATE: [blank]
PROJECT NO.: [blank]
DRAWING NO.: [blank]
SHEET NO.: [blank]

PASS-A-GRILLE
WHEELS COUNTY, FLORIDA
PROJECT CONDITION SURVEY
B AND 10-FOOT PROJECT
STA. 15+00 CUT-2 THRU STA. 18+00 CUT-3
PLAN

DRAWING NO.
4/9
SHEET 4 OF 9

GULF OF MEXICO

PASS-A-GRILLE

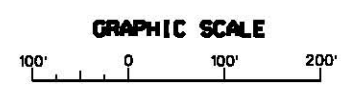
MATCHLINE SHEET NO. 3 STA. 15+00

MATCHLINE SHEET NO. 5 STA. 18+00

CUT-2
AZ-258-06-06

NDS TO NAVIGATION	PLANE COORDINATES		LATITUDE	LONGITUDE
	X	Y		
DBN-7B (87/89)	416,248	1,216,438	27°48'41.95"	82°44'28.72"
LI-9 (87/89)	417,828	1,216,688	27°48'44.14"	82°44'19.97"
SIOW (87/89)	415,547	1,215,452	27°48'31.74"	82°44'36.37"
NDWAKE (87/89)	416,795	1,215,943	27°48'36.68"	82°44'22.51"

CUT-3
AZ-248-46-35



NOTES:
1. REFER TO SURVEY NO. 09-74.
2. SEE SHEET NO. 1 FOR SURVEY NOTES.

AID TO NAVIGATION	PLANE COORDINATES		LATITUDE	LONGITUDE
	X	Y		
LT-10 (87/89)	419,227	1,217,519	27°48'52.43"	82°43'55.57"

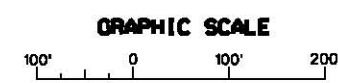
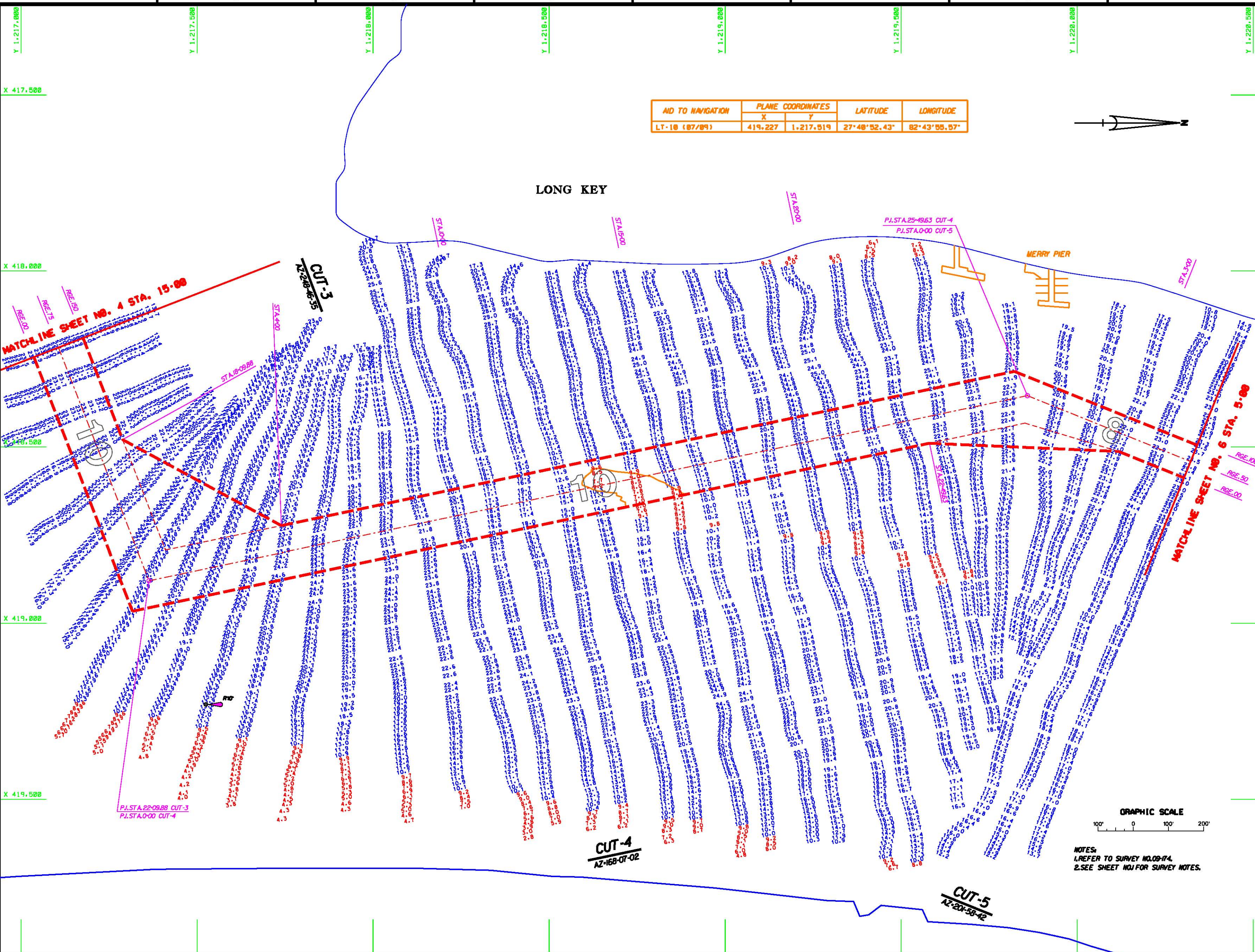


LONG KEY

MERRY PIER

WATCHLINE SHEET NO. 4 STA. 15+00

WATCHLINE SHEET NO. 6 STA. 5+00



NOTES:
1. REFER TO SURVEY NO. 08-174.
2. SEE SHEET NO. 1 FOR SURVEY NOTES.



US Army Corps of Engineers
Jacksonville District

SAFETY ON THIS JOB
DEPENDS ON YOU

DEPARTMENT OF THE ARMY
JACKSONVILLE DISTRICT
JACKSONVILLE, FLORIDA

Drawn by	Checked by	Scale	Sheet No.

PASS-A-DORLE
WELLS COUNTY, FLORIDA
PROJECT CONDITION SURVEY
B AND 10-FOOT PROJECT
STA. 5+00 CUT-3 THRU STA. 9+00 CUT-3
PLAN

DRAWING NO.
5/9

SHEET 5 OF 9

AIDS TO NAVIGATION	PLANE COORDINATES		LATITUDE	LONGITUDE
	X	Y		
LT-11 (87/89)	418.476	1,221.810	27°41'29.95"	82°44'04.15"
SIGN (87/89)	418.458	1,221.110	27°41'37.85"	82°44'04.52"
SIGN (87/89)	418.713	1,221.133	27°41'36.09"	82°44'01.59"

LONG KEY

MUD KEY



SAFETY ON THIS JOB DEPENDS ON YOU

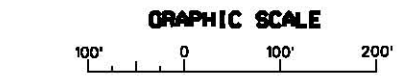
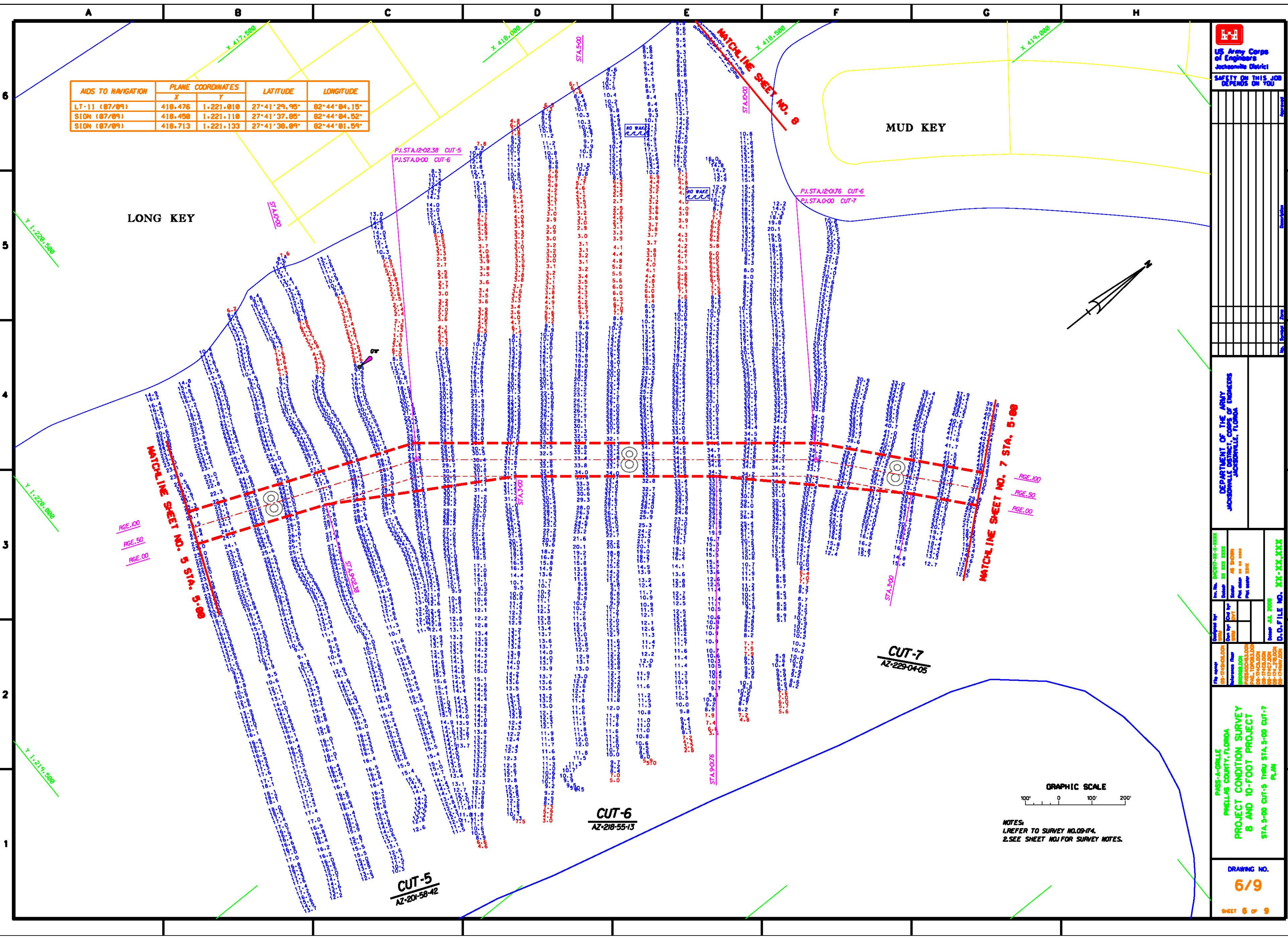
DEPARTMENT OF THE ARMY
JACKSONVILLE, FLORIDA

PROJECT: J201-58-42
DATE: 01/2014
SCALE: AS SHOWN
PROJECT NO: 109-174
PROJECT NAME: PROJECT CONDITION SURVEY
PROJECT LOCATION: MELLISSA COUNTY, FLORIDA

PROJECT: J201-58-42
DATE: 01/2014
SCALE: AS SHOWN
PROJECT NO: 109-174
PROJECT NAME: PROJECT CONDITION SURVEY
PROJECT LOCATION: MELLISSA COUNTY, FLORIDA

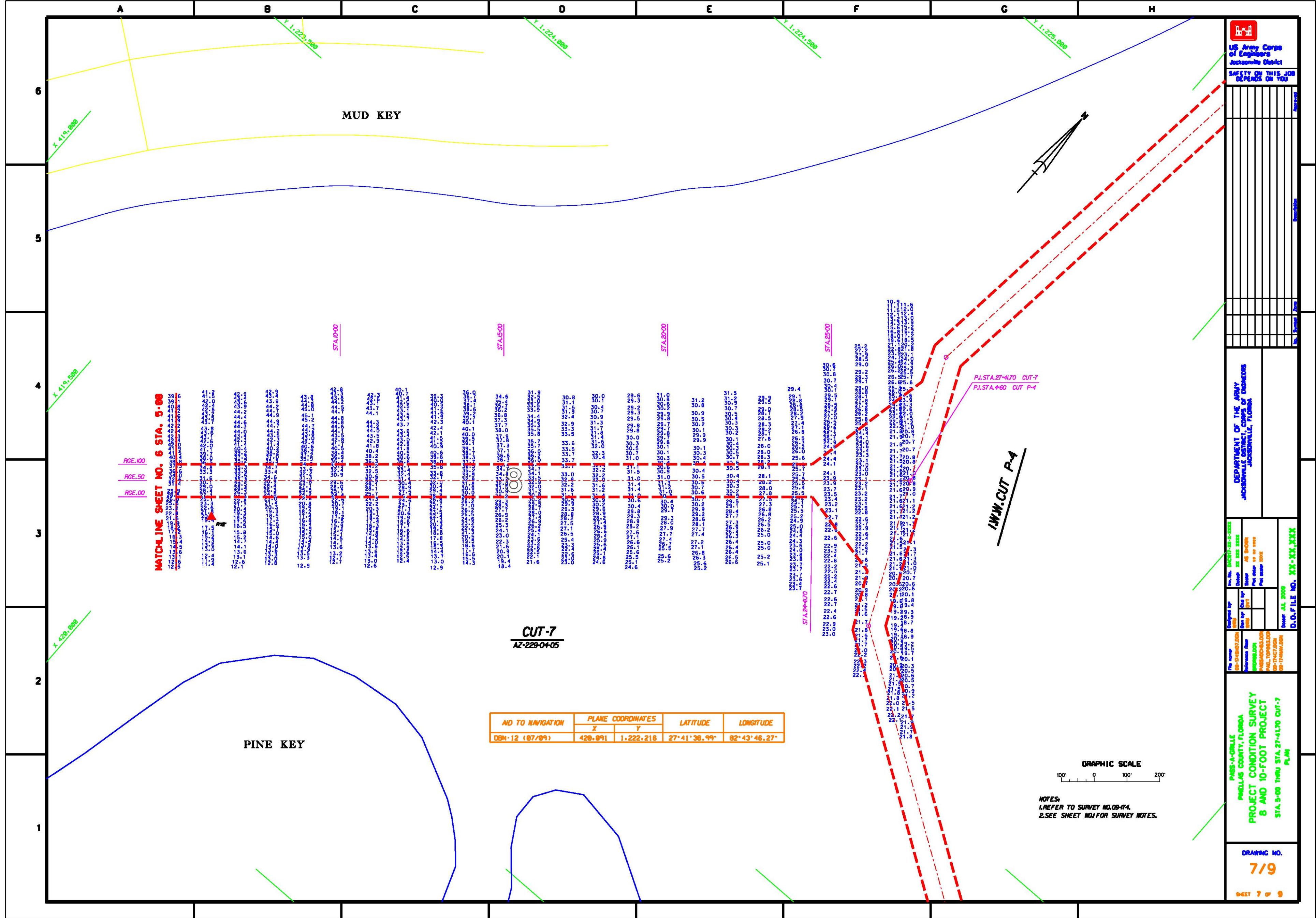
DRAWING NO.
6/9

SHEET 6 of 9



NOTES:
1. REFER TO SURVEY NO. 109-174.
2. SEE SHEET NO. 10 FOR SURVEY NOTES.

D.O. FILE NO. 109-174-XXX
DRAWING NO. 6/9



MATCHLINE SHEET NO. 6 STA. 5+00

RGE.100
RGE.50
RGE.00

CUT-7
AZ-229-04-05

AID TO NAVIGATION	PLANE COORDINATES		LATITUDE	LONGITUDE
	X	Y		
DSN-12 (07/89)	428,891	1,222,216	27°41'38.99"	82°43'46.27"



NOTES:
1. REFER TO SURVEY NO. 08-174.
2. SEE SHEET NO. 7 FOR SURVEY NOTES.

US Army Corps of Engineers
Jacksonville District
SAFETY ON THIS JOB
DEPENDS ON YOU

DEPARTMENT OF THE ARMY
CORPS OF ENGINEERS
JACKSONVILLE, FLORIDA

DESIGNED BY: [Name]
CHECKED BY: [Name]
DATE: [Date]
SCALE: AS SHOWN
PROJECT: [Project Name]

PASS-A-DORLE
WHEELS COUNTY, FLORIDA
PROJECT CONDITION SURVEY
B AND 10-FOOT PROJECT
STA. 9+00 THRU STA. 27+41.70 CUT-7
PLAN

DRAWING NO.
7/9
SHEET 7 of 9

