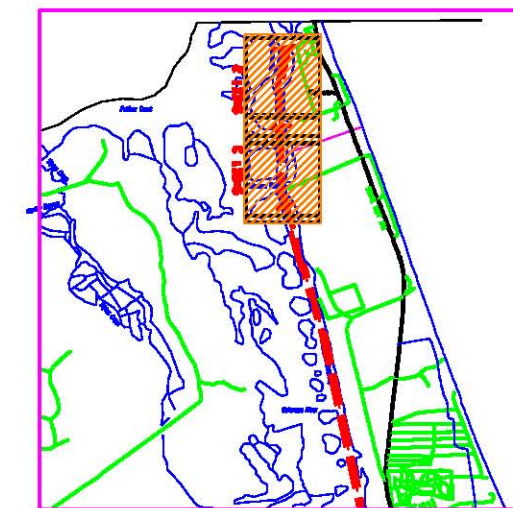
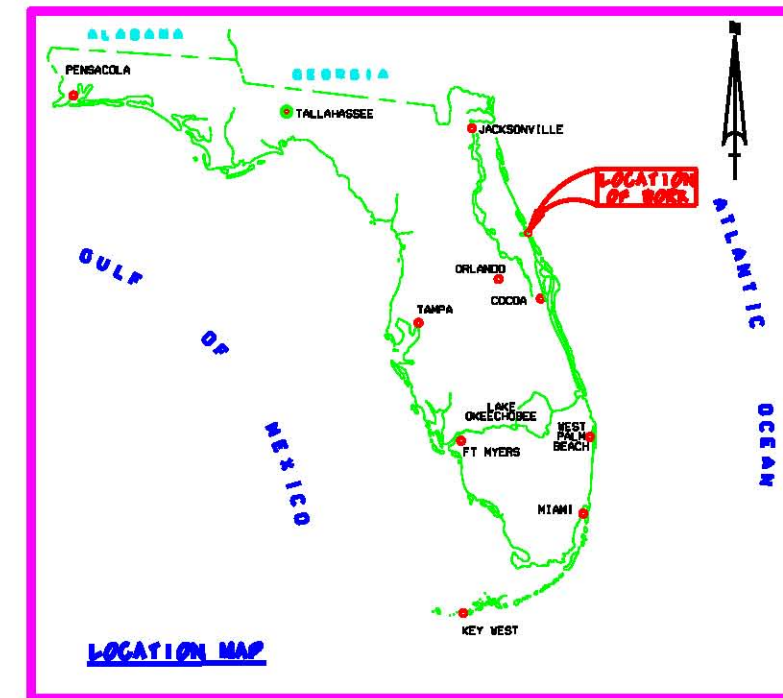
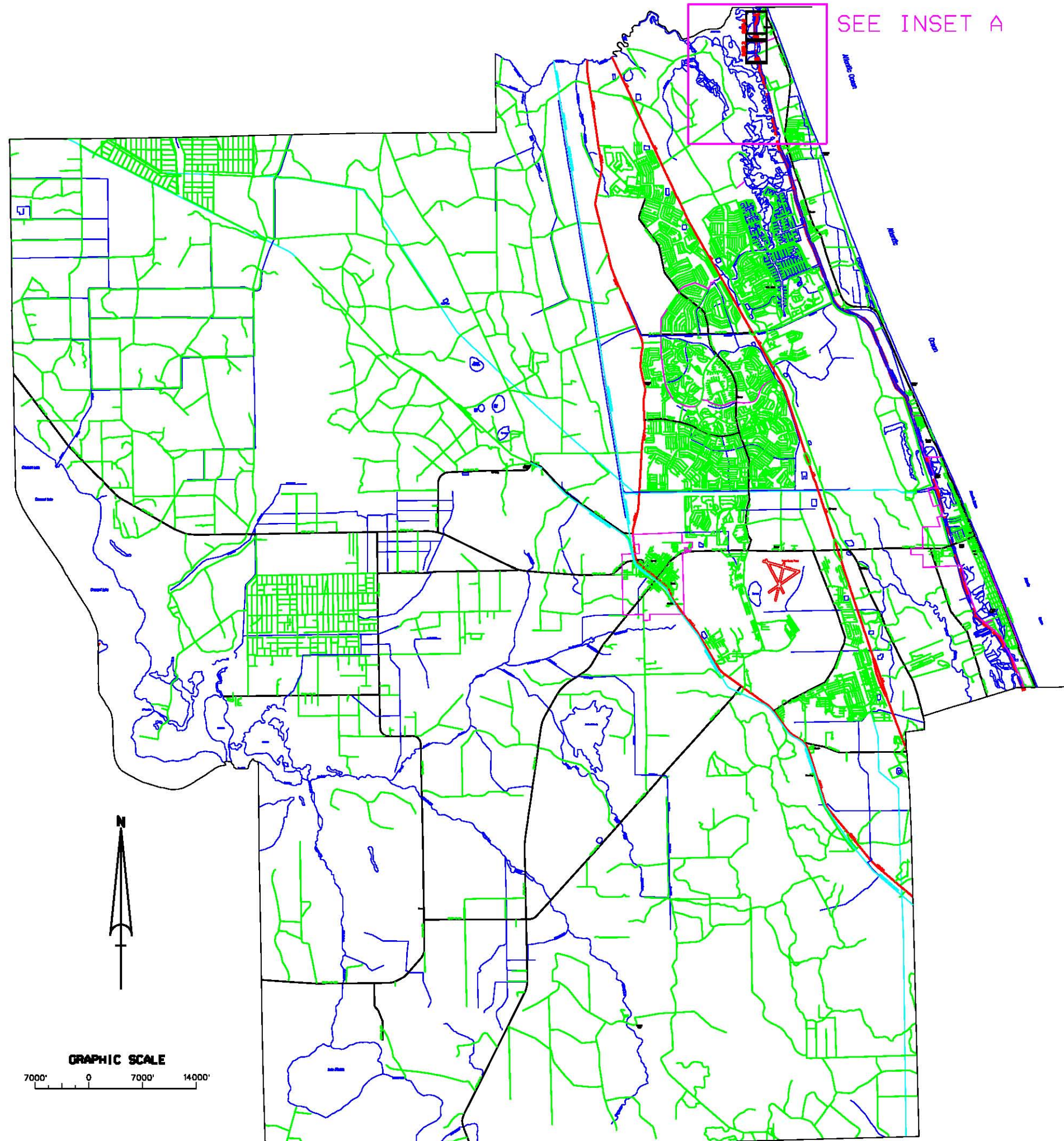


INTRACOASTAL WATERWAY JACKSONVILLE TO MIAMI, FLORIDA FLAGLER COUNTY PROJECT CONDITION SURVEY



INSET A



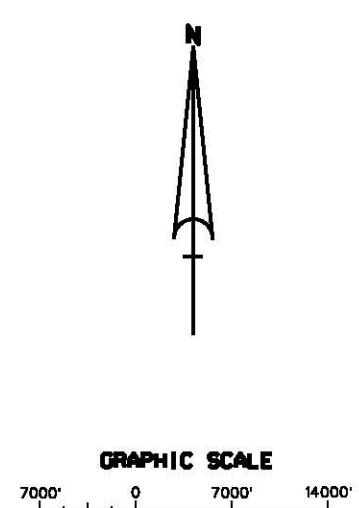
SURVEY NOTES:

1. REFER TO SURVEY NO. 09-19.
 2. SOUNDINGS ARE IN FEET AND TENTHS AND REFER TO NOAA'S REPORTED MEAN LOWER LOW WATER (MLLW) OF THE 1983-2001 TIDAL EPOCH.
 3. ALL ELEVATIONS ARE BELOW THE CHART DATUM UNLESS PRECEDED BY A (+) SIGN.
 4. TIDAL REDUCTIONS WERE OBTAINED UTILIZING REAL-TIME KINEMATIC GPS WITH A NAVD83/MLLW SEPARATION OF -2.65'.
 5. PLANE COORDINATES ARE BASED ON THE TRANSVERSE MERCATOR PROJECTION FOR THE EAST ZONE OF FLORIDA AND REFERRED TO NORTH AMERICAN DATUM OF 1983 (NAD83).
 6. ALL AZIMUTHS ARE GRID RECKONED CLOCKWISE FROM SOUTH.
 7. ALL STATIONING REFERS TO THE CENTERLINE OF THE CHANNEL.
 8. SURVEY WAS PERFORMED USING REAL-TIME KINEMATIC GPS POSITIONING WITH THE FOLLOWING REFERENCE BASE LOCATIONS:
 *REFERENCE BASE LOCATED AT 'NWS-224 1997'
 LAT: 29°47'39.46" N
 LONG: 81°52'54.63" W
 ELLIPSOID HEIGHT: -26.866'
 NAVD83 ELEVATION: 6.26'
 *TIDE STAFF ESTABLISHED FROM 'NWS-224 1997'
 LAT: 29°47'39.46" N
 LONG: 81°52'54.63" W
 ELLIPSOID HEIGHT: -26.866'
 NAVD83 ELEVATION: 6.26'
- VERTICAL MEASUREMENTS WERE MADE USING A ROSS SMARTSOUNDER DUAL FREQUENCY 2000KHZ SINGLE-BEAM TRANSDUCER. SOUNDINGS SHOWN ARE IN HIGH FREQUENCY (2000KHZ).
- | VESSEL | DATE OF SURVEY | CUT |
|--------|----------------|---------|
| WB-32 | 07 AUG 2009 | F-I-F-2 |
9. SANDS TO NAVIGATION WERE LOCATED DURING THIS SURVEY.
10. THE INFORMATION DEPICTED ON THIS MAP REPRESENTS THE RESULTS OF SURVEYS MADE ON THE DATES INDICATED ABOVE AND CAN ONLY BE CONSIDERED AS INDICATING THE GENERAL CONDITIONS AT THAT TIME. THIS CHART IS SOLELY FOR THE DISTRIBUTION OF AVAILABLE DEPTHS AT THE TIME OF THE SURVEY AND IS NOT TO BE USED FOR NAVIGATION.
11. SURVEY ACCURACY STANDARDS, QUALITY CONTROL, AND QUALITY ASSURANCE REQUIREMENTS WERE FOLLOWED DURING THIS SURVEY IN ACCORDANCE WITH USACE EM 1110-2-1003, HYDROGRAPHIC SURVEYING, 1 JAN 02.

BENCHMARK	NAVD ELEV. (FT)
NWS-224 1997	6.26



LEGEND	
• BM	BENCHMARK
⬮	LIGHTED BEACON
⬮	GREEN DAYBEACON
⬮	RED DAYBEACON
⬮	RED LIGHTED BUOY
⬮	GREEN LIGHTED BUOY
⬮	CAN BUOY
⬮	NAU BUOY
⬮	TIDE STAFF



US Army Corps of Engineers
Jacksonville District

SAFETY ON THIS JOB DEPENDS ON YOU

DEPARTMENT OF THE ARMY
Jacksonville District
Jacksonville, Florida

INTRACOASTAL WATERWAY JACKSONVILLE TO MIAMI, FLORIDA PROJECT CONDITION SURVEY 12-FOOT PROJECT INDEX LOCATION AND VICINITY PLAN

DRAWING NO.
1/3

SHEET 1 OF 228

AIDS TO NAVIGATION	PLANE COORDINATES		LATITUDE	LONGITUDE
	X	Y		
LT-92 (88/89)	586.928	1.935.927	29°39'31.88"	81°13'84.85"
LT-94 (88/89)	586.958	1.934.837	29°39'13.89"	81°13'84.39"

US Army Corps of Engineers
Jacksonville District
SAFETY ON THIS JOB
DEPENDS ON YOU

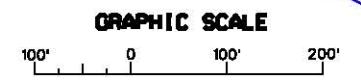
DEPARTMENT OF THE ARMY
CORPS OF ENGINEERS
JACKSONVILLE DISTRICT

DESIGNED BY: [blank]
CHECKED BY: [blank]
DATE: [blank]
SCALE: AS SHOWN
PROJECT NO. [blank]
SHEET NO. [blank]

PROJECT NO. [blank]
SHEET NO. [blank]

INTRACOUNTY WATERWAY
JACKSONVILLE COUNTY, FLORIDA
PROJECT CONDITION SURVEY
12-FOOT PROJECT
STA. 14-00 CUT F-2 THRU STA. 6-00 CUT F-3
PLAN

DRAWING NO.
3/3
SHEET 3 OF 22X



NOTES:
1. REFER TO SURVEY NO. 09-19.
2. SEE SHEET NO. J FOR SURVEY NOTES.

