

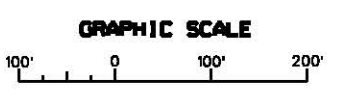
US Army Corps of Engineers
Jacksonville District
SAFETY ON THIS JOB
DEPENDS ON YOU

DEPARTMENT OF THE ARMY
CORPS OF ENGINEERS
JACKSONVILLE DISTRICT

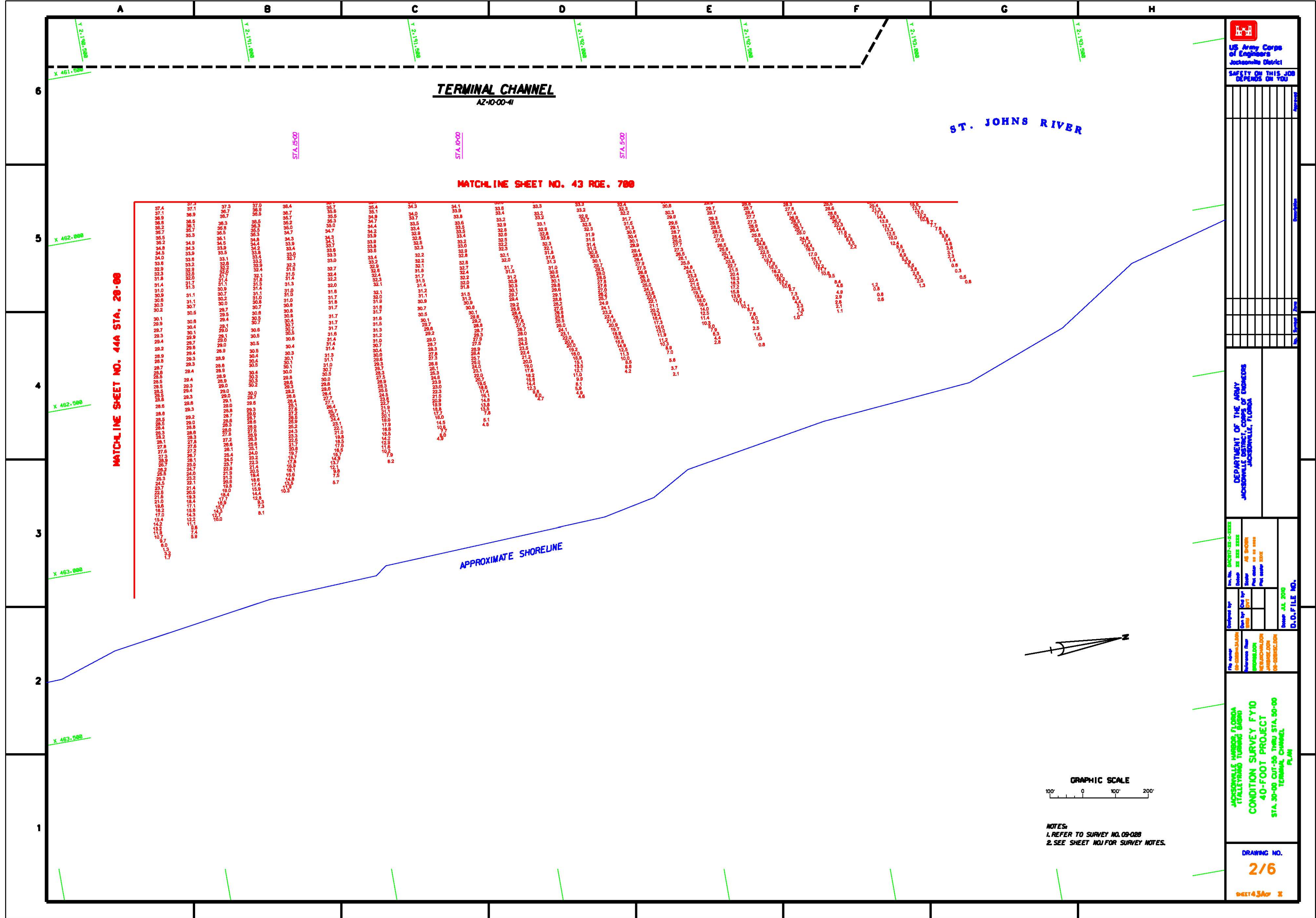
Project No. 04037-01-0-0000
Contract No. 04037-01-0-0000
Task Order No. 04037-01-0-0000
Drawing No. 04037-01-0-0000
Revision No. 04037-01-0-0000
Scale: AS SHOWN
Date: 08/08/08
Author: JLM
Checked: JLM
Title: 40-FOOT PROJECT
Terminal Channel
PLAN

JACKSONVILLE HARBOUR FLORIDA
TRAILWAY TUNNEL
CONDITION SURVEY FY10
40-FOOT PROJECT
STA. 30+00 CUT-55 THROUGH STA. 50+00
TERMINAL CHANNEL
PLAN

DRAWING NO.
1/6
SHEET 43 OF 4



NOTES:
1. REFER TO SURVEY NO. 08-028.
2. SEE SHEET NO. J FOR SURVEY NOTES.



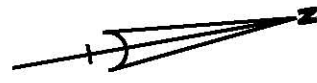
TERMINAL CHANNEL
AZ-10-00-41

ST. JOHNS RIVER

MATCHLINE SHEET NO. 43 RCE. 788

MATCHLINE SHEET NO. 44A STA. 20+00

APPROXIMATE SHORELINE



NOTES:
1. REFER TO SURVEY NO. 09-088
2. SEE SHEET NO. J FOR SURVEY NOTES.

US Army Corps of Engineers
Jacksonville District
SAFETY ON THIS JOB
DEPENDS ON YOU

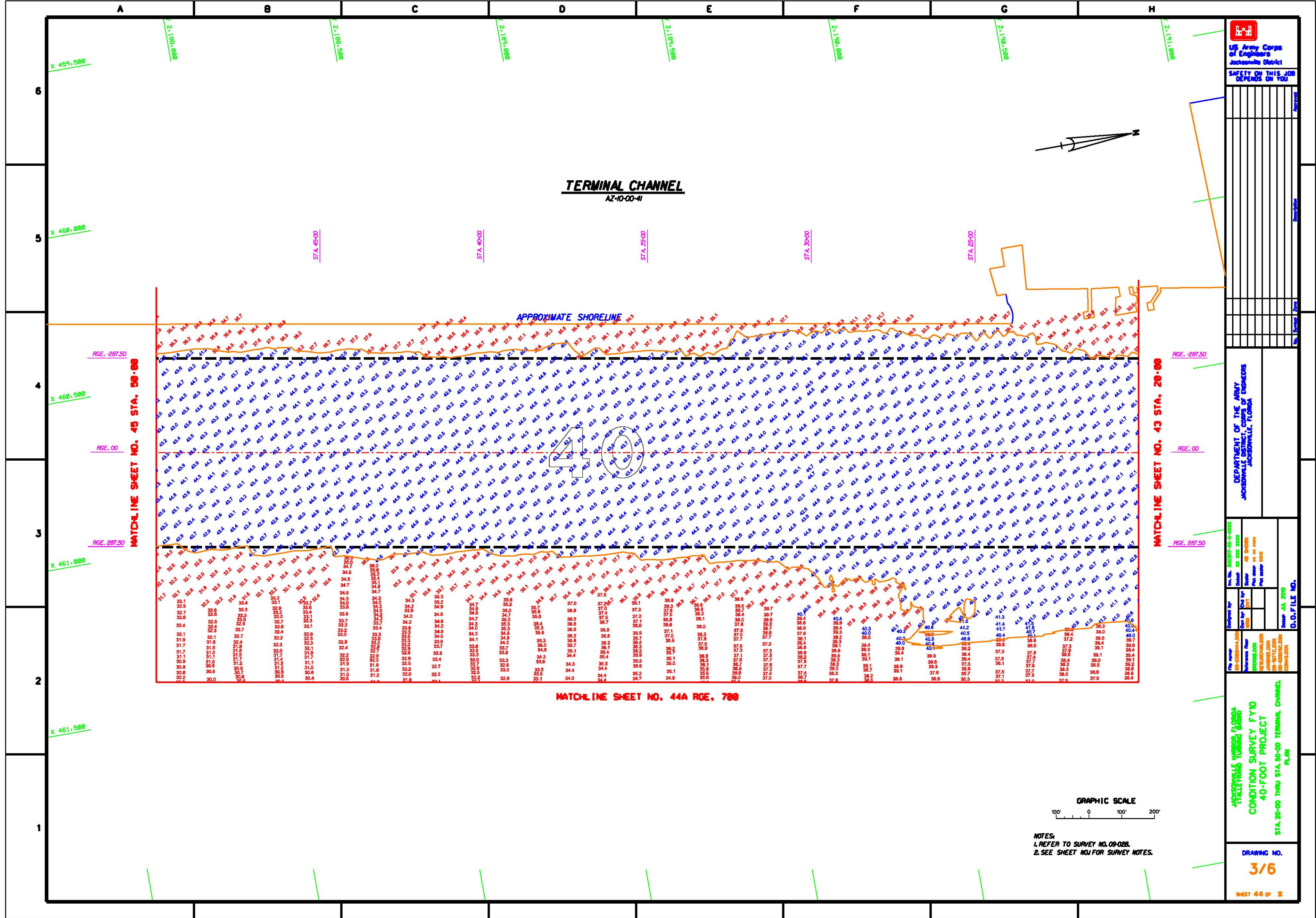
DEPARTMENT OF THE ARMY
CORPS OF ENGINEERS
JACKSONVILLE, FLORIDA

Developed by: [blank]
Checked by: [blank]
Drawn by: [blank]
Scale: AS SHOWN
Date: [blank]
Project: [blank]
Sheet: [blank]

JACKSONVILLE HARBOUR, FLORIDA
ITALYLAND TURNING BASIN
CONDITION SURVEY FY10
40-FOOT PROJECT
STA. 30+00 CUT-55 THRU STA. 50+00
TERMINAL CHANNEL
PLAN

DRAWING NO.
2/6

SHEET 43A OF 4



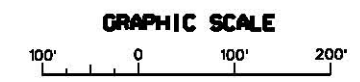
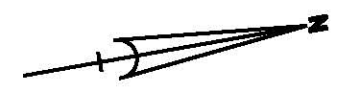
US Army Corps of Engineers
Jacksonville District
SAFETY ON THIS JOB
DEPENDS ON YOU

DEPARTMENT OF THE ARMY
CORPS OF ENGINEERS
JACKSONVILLE DISTRICT

Drawn by: [Name]
Checked by: [Name]
Scale: AS SHOWN
Date: [Date]

JACKSONVILLE DISTRICT
CONDITION SURVEY FY0
40-FOOT PROJECT
STA 20+00 THRU STA 50+00 TERMINAL CHANNEL
PLAN

DRAWING NO.
3/6
SHEET 44 OF 48



NOTES:
1. REFER TO SURVEY NO. 09-028.
2. SEE SHEET NO. J FOR SURVEY NOTES.

A B C D E F G H

2-1,871,500
RGE, 287.50

2-1,881,000

2-1,881,500

2-1,891,000

2-1,891,500

2-1,901,000

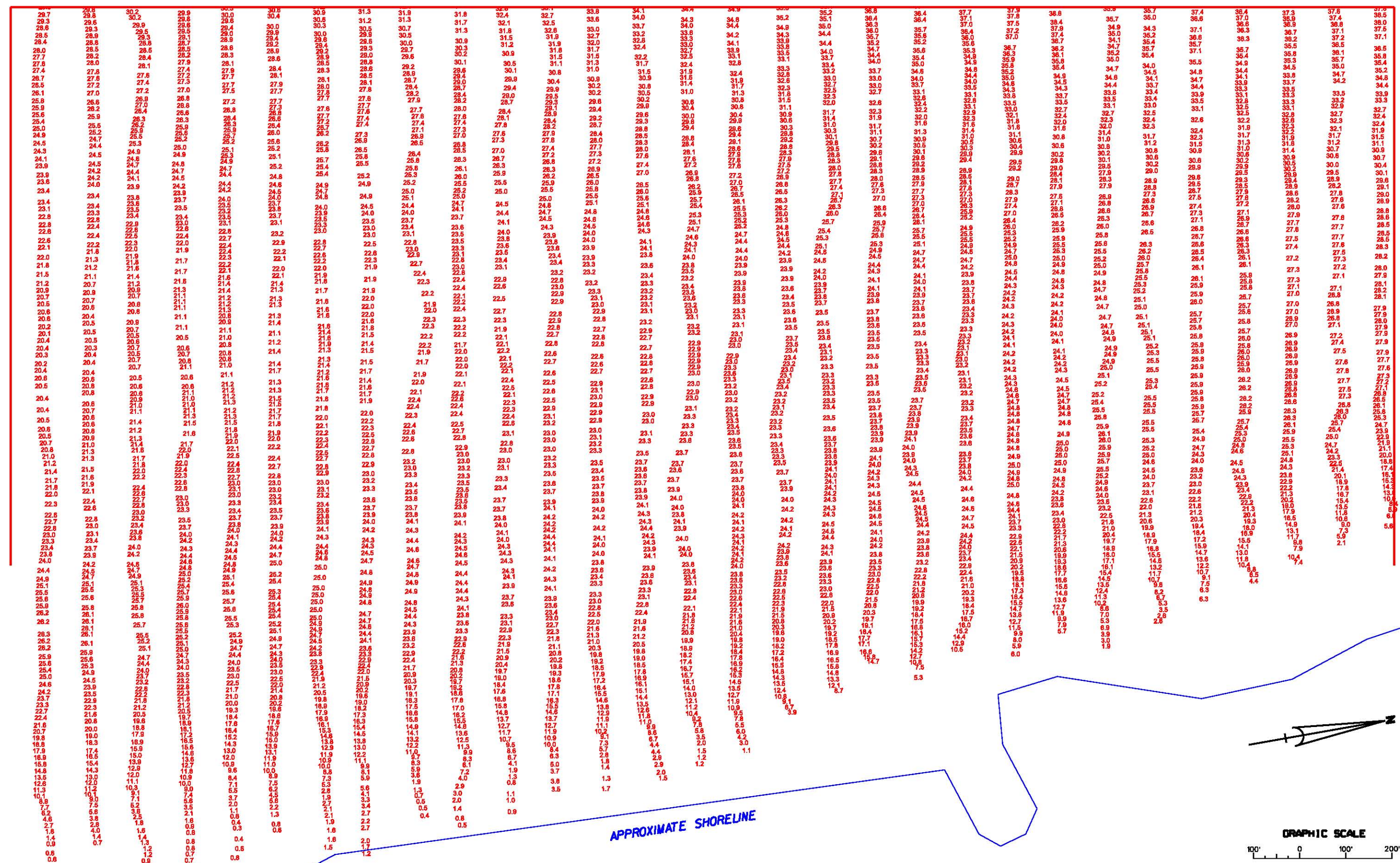
2-1,901,500
RGE, 287.50

TERMINAL CHANNEL AZ-10-00-41

MATCHLINE SHEET NO. 44 RGE. 700

MATCHLINE SHEET NO. 45A STA. 50+00

MATCHLINE SHEET NO. 43A STA. 20+00



US Army Corps of Engineers
Jacksonville District

SAFETY ON THIS JOB
DEPENDS ON YOU

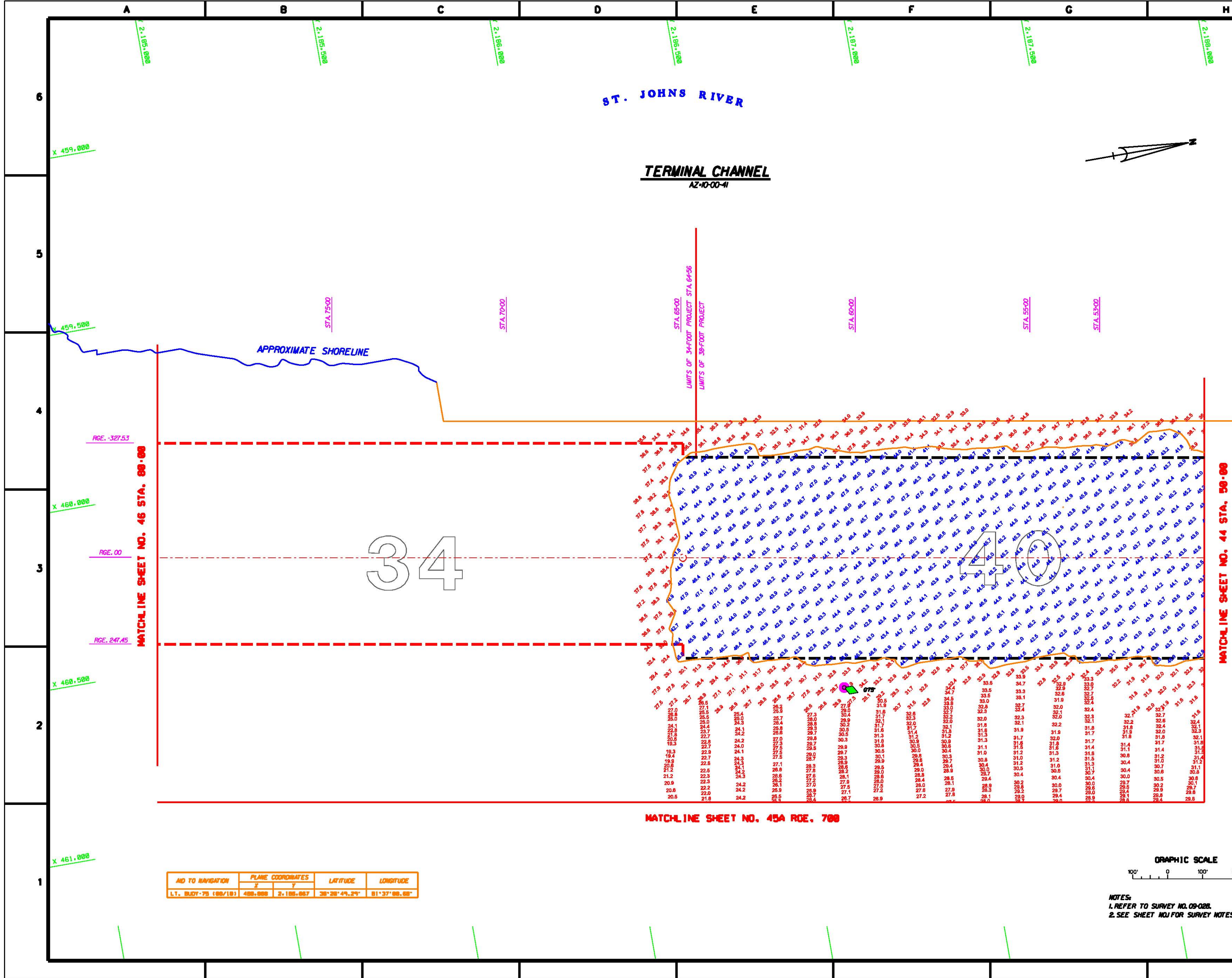
DEPARTMENT OF THE ARMY
CORPS OF ENGINEERS
JACKSONVILLE DISTRICT

Checked by	DATE
Drawn by	DATE
Reviewed by	DATE
Approved by	DATE

4-17-00
CONDITION SURVEY FY0
40-FOOT PROJECT
STA. 20+00 THRU STA. 50+00 TERMINAL CHANNEL
PLAN

DRAWING NO.
4/6
SHEET 44A OF 4

NOTES:
1. REFER TO SURVEY NO. 09-028.
2. SEE SHEET NO. 43 FOR SURVEY NOTES.



AID TO NAVIGATION	PLANE COORDINATES		LATITUDE	LONGITUDE
	X	Y		
L.T. BUOY 75 (88/18)	488,000	2,186,067	38°28'49.2"	81°37'00.05"



NOTES:
1. REFER TO SURVEY NO. 09-026.
2. SEE SHEET NO. 44 FOR SURVEY NOTES.

US Army Corps of Engineers
Jacksonville District

SAFETY ON THIS JOB
DEPENDS ON YOU

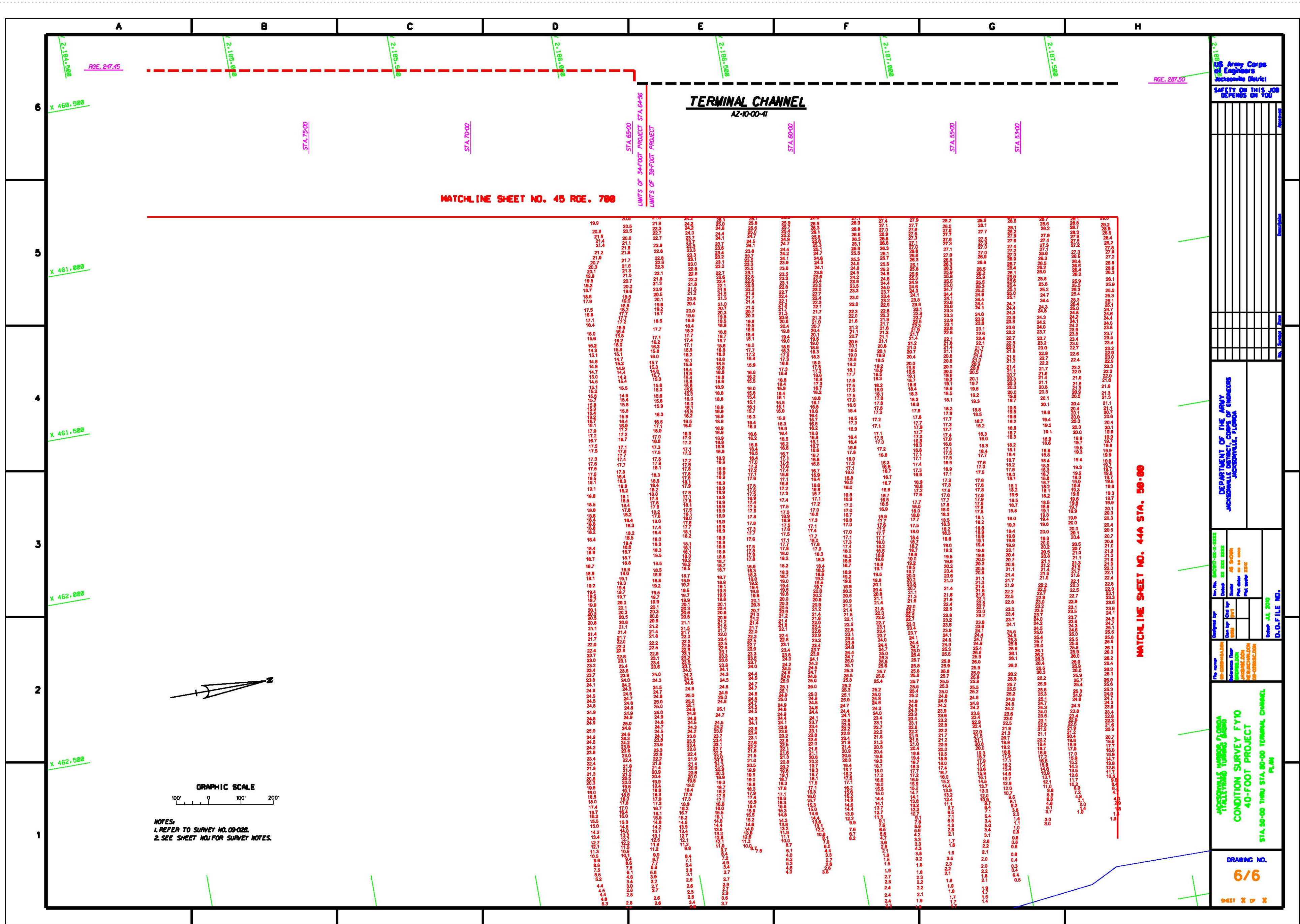
DEPARTMENT OF THE ARMY
Jacksonville District
Jacksonville, Florida

Developed by: 09-026-01-01-0000
Checked by: 09-026-01-01-0000
Drawn by: 09-026-01-01-0000
Title: 09-026-01-01-0000
Scale: AS SHOWN
File name: 09-026-01-01-0000
Date: 09-026-01-01-0000

HAZARDOUS WASTE FLORIDA
CONDITION SURVEY FY10
40-FOOT PROJECT
STA 50+00 THRU STA 80+00 TERMINAL CHANNEL
PLAN

DRAWING NO.
5/6

SHEET 45 OF 54



US Army Corps of Engineers
Jacksonville District

SAFETY ON THIS JOB
DEPENDS ON YOU

DEPARTMENT OF THE ARMY
CORPS OF ENGINEERS
JACKSONVILLE DISTRICT

PROJECT NO. 44A STA. 50-00
DRAWING NO. 6/6
SHEET 6 OF 6

JACKSONVILLE DISTRICT
CONDITION SURVEY FY0
40-FOOT PROJECT
STA 50+00 THRU STA 90+00 TERMINAL CHANNEL
PLAN

DRAWING NO.
6/6

SHEET 6 OF 6

MATCHLINE SHEET NO. 45 RGE. 780

TERMINAL CHANNEL
AZ-10-00-41

MATCHLINE SHEET NO. 44A STA. 50-00

NOTES:
1. REFER TO SURVEY NO. 05-028.
2. SEE SHEET NO. 4 FOR SURVEY NOTES.