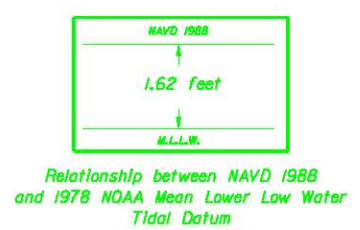


GULF INTRACOASTAL WATERWAY LEE COUNTY EXAM SURVEY

- SURVEY NOTES:**
- REFER TO SURVEY NO. 08-121.
 - SOUNDINGS ARE IN FEET AND TENTHS AND REFER TO MEAN LOWER LOW WATER (MLLW) WHICH IS 1.62 FEET BELOW NAVD 1988.
 - ALL ELEVATIONS ARE BELOW THE CHART DATUM UNLESS PRECEDED BY A (+) SIGN.
 - TIDAL REDUCTIONS WERE MADE FROM A STAFF SET ON A WOODEN DOCK OF THE PUBLIC FISHING PIER, AND REFERENCED FROM BENCHMARK *NGS 5541-A*.
 - PLANE COORDINATES ARE BASED ON THE TRANSVERSE MERCATOR PROJECTION FOR THE EAST ZONE OF FLORIDA AND REFERENCED TO NORTH AMERICAN DATUM OF 1983 (NAD83).
 - ALL AZIMUTHS ARE GRID; RECKONED CLOCKWISE FROM SOUTH.
 - ALL STATIONING REFERS TO THE CENTERLINE OF THE CHANNEL.
 - SURVEY WAS PERFORMED USING DIFFERENTIAL GPS FOR POSITIONING AND UTILIZING THE USCG NAVBEACON SYSTEM AS THE REFERENCE SITE. VERTICAL MEASUREMENTS WERE MADE USING A ROSS SMART SOUNDER DEPTH RECORDER WITH A 200KHZ (HIGH FREQUENCY) TRANSDUCER.
 - ALL AIDS TO NAVIGATION WERE LOCATED DURING THIS SURVEY.
 - THE INFORMATION DEPICTED ON THIS MAP REPRESENTS THE RESULTS OF SURVEYS MADE ON THE DATES INDICATED ABOVE AND CAN ONLY BE CONSIDERED AS INDICATING THE GENERAL CONDITIONS AT THAT TIME. THIS CHART IS SOLELY FOR THE DISTRIBUTION OF AVAILABLE DEPTHS AT THE TIME OF THE SURVEY AND IS NOT TO BE USED FOR NAVIGATION.
 - SURVEY ACCURACY PERFORMANCE STANDARDS, QUALITY CONTROL, AND QUALITY ASSURANCE REQUIREMENTS WERE FOLLOWED DURING THIS SURVEY IN ACCORDANCE WITH USACE EM 110-2-1003, HYDROGRAPHIC SURVEYING, 01 JAN 02.

VESSEL	DATE OF SURVEY	CUT
GANNETT	13, 16 JUN 2008	L1, L21, L22

LEGEND	
• BM	BENCHMARK
⚓	LIGHTED BEACON
⚓	GREEN DAYBEACON
⚓	RED DAYBEACON
⚓	RED LIGHTED BUOY
⚓	GREEN LIGHTED BUOY
⚓	CAN BUOY
⚓	MUN BUOY
⚓	TIDE STAFF



BENCHMARK	NAVD ELEV. (FT)
NGS 5541-A	1.03

US Army Corps of Engineers
Jacksonville District
SAFETY ON THIS JOB DEPENDS ON YOU

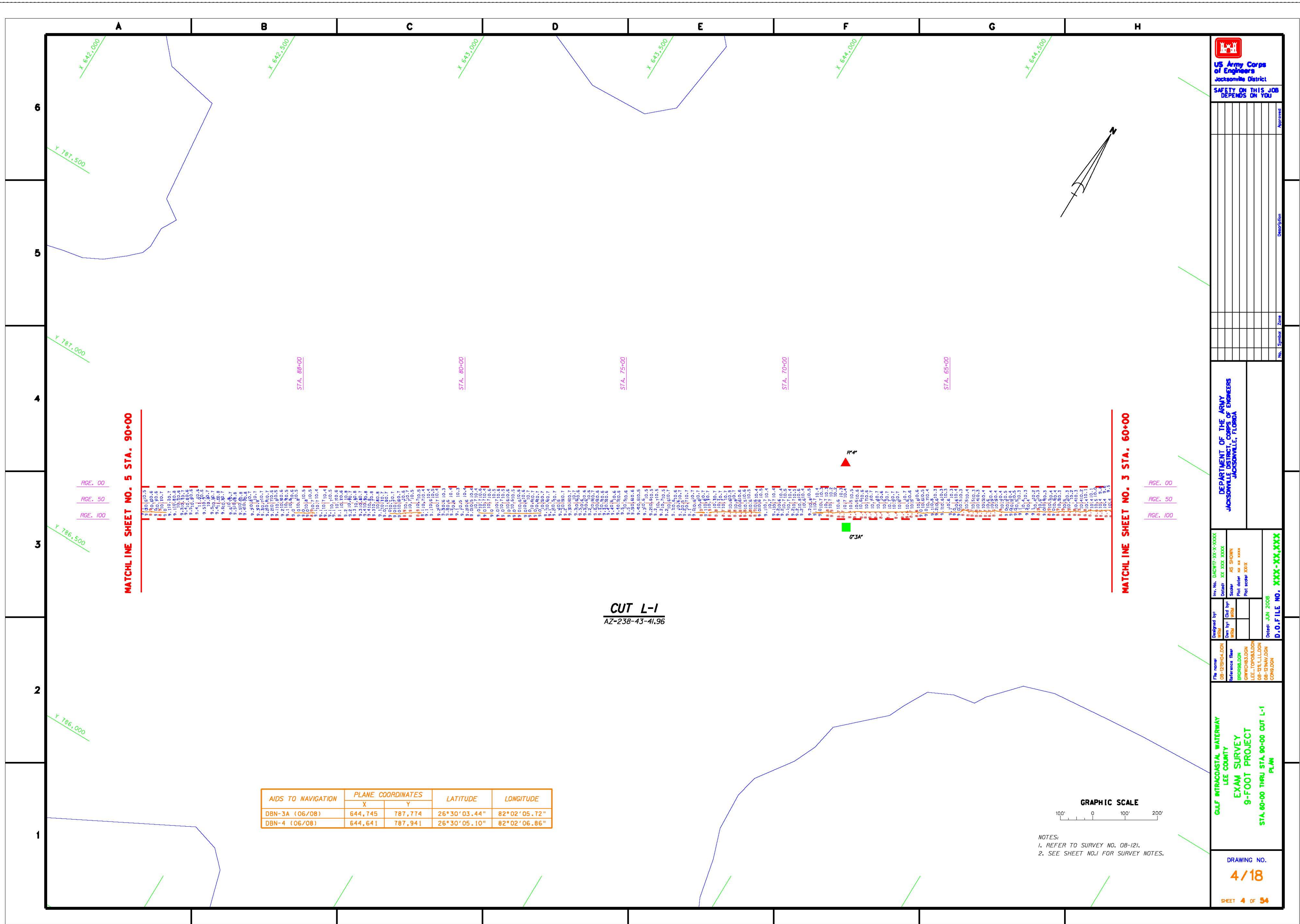
DEPARTMENT OF THE ARMY
CORPS OF ENGINEERS
JACKSONVILLE, FLORIDA

Drawn by: JH 2008
Checked by: JH 2008
D.O.F. FILE NO. XXX-XX,XXX

GULF INTRACOASTAL WATERWAY
LEE COUNTY
EXAM SURVEY
9-FOOT PROJECT
VICINITY, LOCATION AND INDEX
PLAN

DRAWING NO.
1/18

SHEET 1 of 18

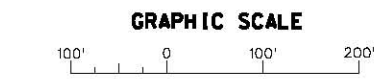


MATCHLINE SHEET NO. 5 STA. 90+00

MATCHLINE SHEET NO. 3 STA. 60+00

CUT L-1
AZ-238-43-41.96

AIDS TO NAVIGATION	PLANE COORDINATES		LATITUDE	LONGITUDE
	X	Y		
DBN-3A (06/08)	644,745	787,774	26°30'03.44"	82°02'05.72"
DBN-4 (06/08)	644,641	787,941	26°30'05.10"	82°02'06.86"



NOTES:
1. REFER TO SURVEY NO. 08-121.
2. SEE SHEET NO.1 FOR SURVEY NOTES.

US Army Corps of Engineers
Jacksonville District

SAFETY ON THIS JOB DEPENDS ON YOU

DEPARTMENT OF THE ARMY
CORPS OF ENGINEERS
JACKSONVILLE, FLORIDA

Rev. No. 040817-300-9-0000
 Date by 00 000 0000
 Scale AS SHOWN
 Plot scale 1" = 40.00'
 Plot scale 000'

GULF INTRACOASTAL WATERWAY
LEE COUNTY
EXAM SURVEY
9-FOOT PROJECT
STA. 60+00 THRU STA. 90+00 CUT L-1
PLAN

DRAWING NO.
4/18

SHEET 4 OF 54

